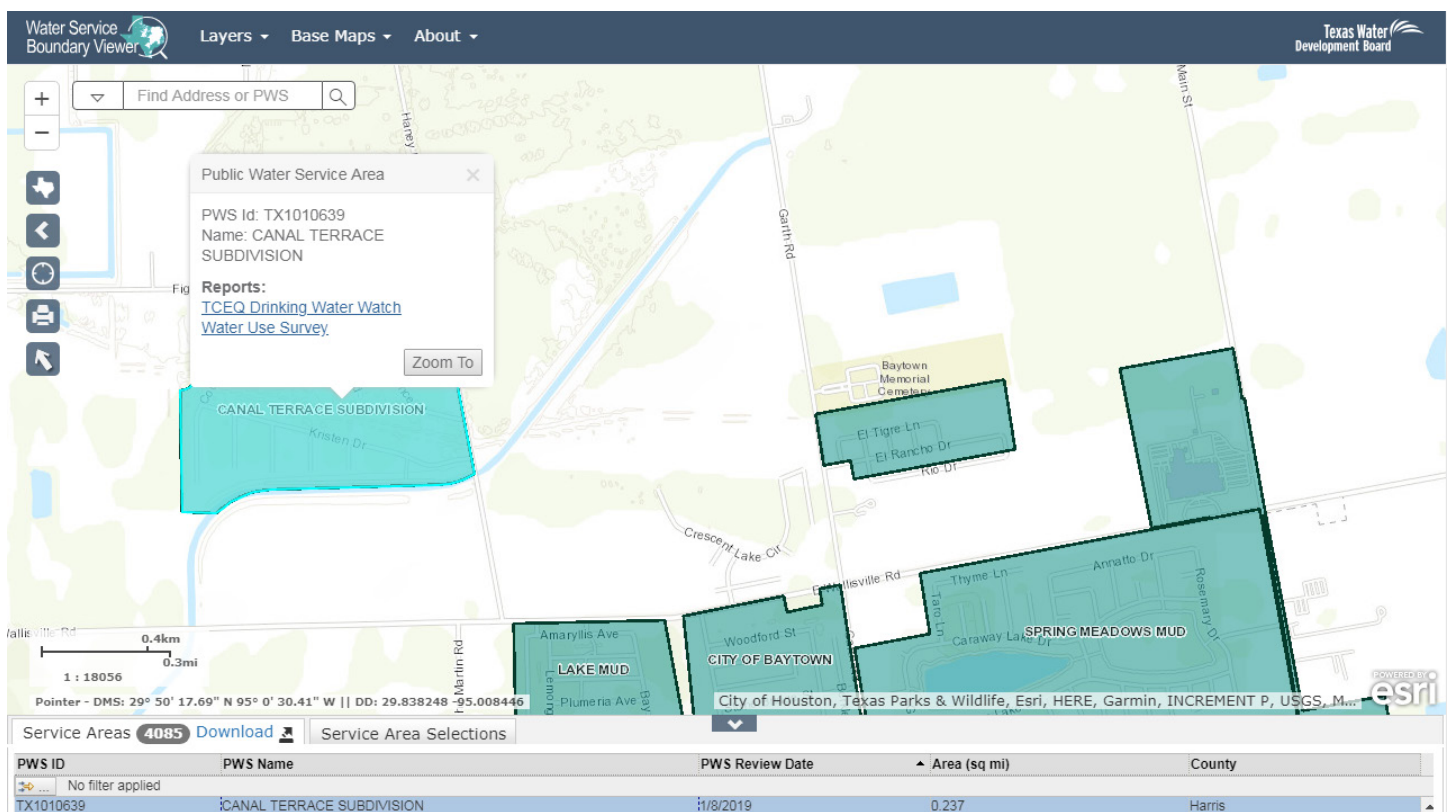


Texas Water Service Boundary Viewer

The Texas Water Development Board (TWDB) developed a statewide public water system service area mapping application called the Texas Water Service Boundary Viewer (Viewer) through a grant from the U.S. Geologic Survey (USGS) Water Availability and Use Science Program. This application is used to collect accurate retail water service boundaries to better estimate and project utility population for the Regional Water Plans and the State Water Plan. The Viewer also helps in estimating rural population not served by a system. While several water system mapping applications exist in the state, they do not necessarily represent the actual retail service area or include all the systems within the state, rather just a subset. This application strives to provide the most up-to-date and best data available on the service areas for all community Public Water Systems (PWS) within Texas.



In partnership with the annual TWDB Water User Survey, water systems are encouraged to use the application to verify that their service area boundaries on file are accurate and update them if changes have occurred. Information for editors (utilities) is available at: <http://bit.ly/ServiceBoundaryEditor>. The application is available to the public so that they can view the water system areas on file at <https://www2.twdb.texas.gov/apps/WaterServiceBoundaries>. The Viewer also provides links to supplemental information about the PWS, allowing the user to view system specific data from the Drinking Water Watch (maintained by the Texas Commission on Environmental Quality) as well as water use survey information.

For additional information on the Texas Water Service Boundary Viewer, please email WSBViewer@twdb.texas.gov.