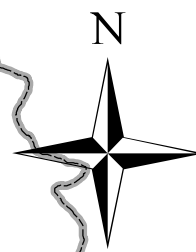
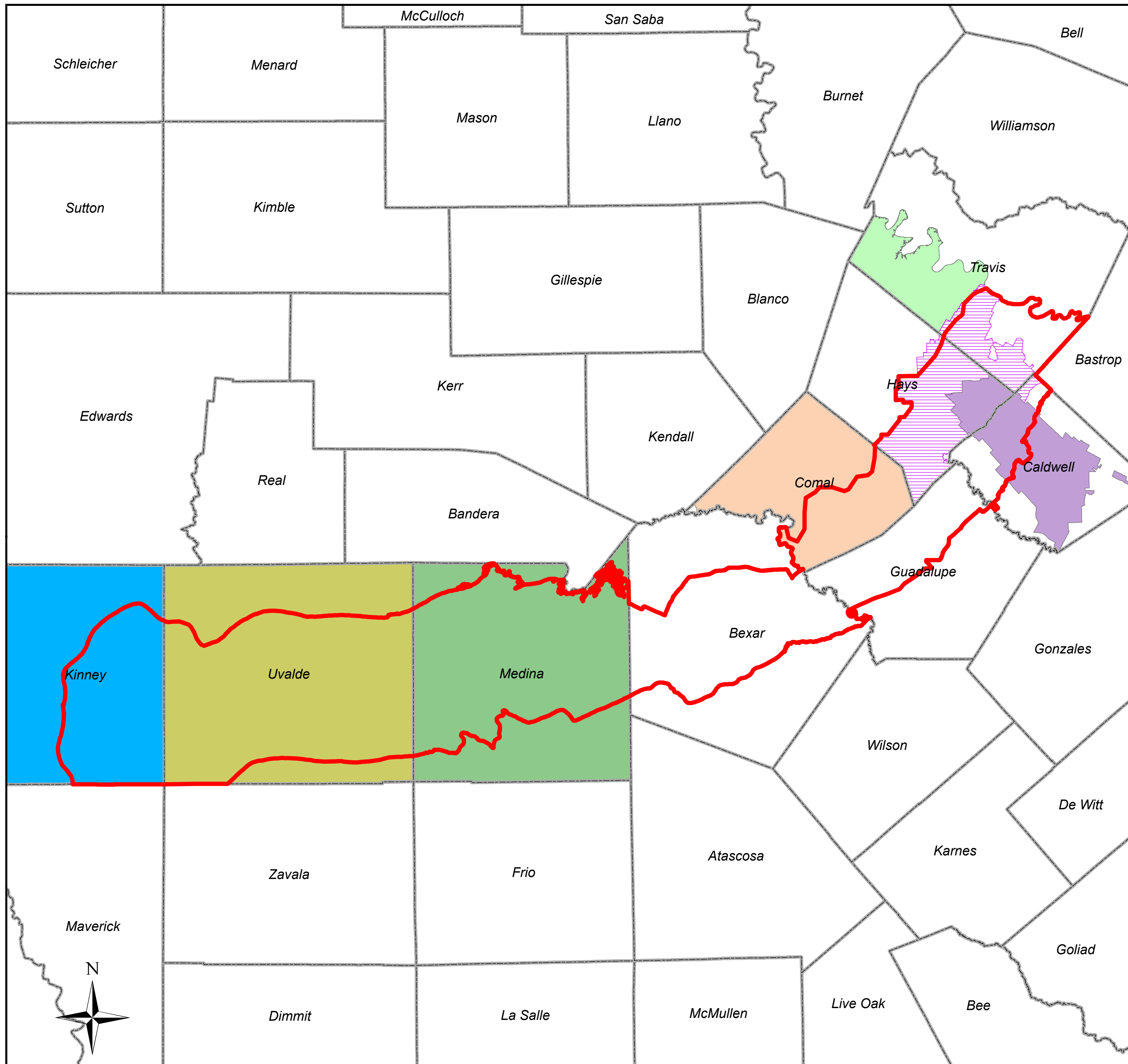


Groundwater Management Area 10

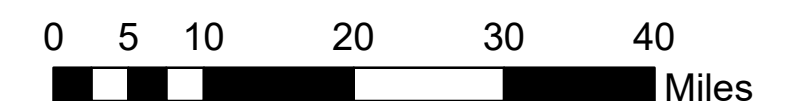
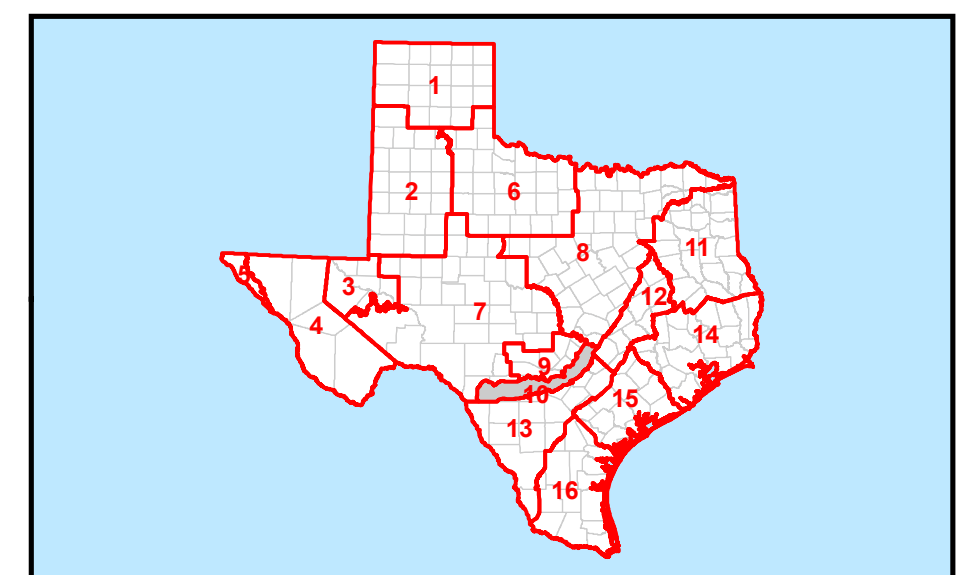


MAP LEGEND

- GMA 10
- Counties
- GCDs**
- Barton Springs/Edwards Aquifer CD
- Comal Trinity GCD
- Kinney County GCD
- Medina County GCD
- Plum Creek CD
- Southwestern Travis County GCD
- Uvalde County UWCD

DISCLAIMER
 This map was generated by the Texas Water Development Board. No claims are made to the accuracy or completeness of the information shown herein nor to its suitability for a particular use. The scale and location of all mapped data are approximate. Boundaries for groundwater conservation districts are approximate and may not accurately depict legal descriptions.

Updated 06/29/2020



1 in = 13 miles