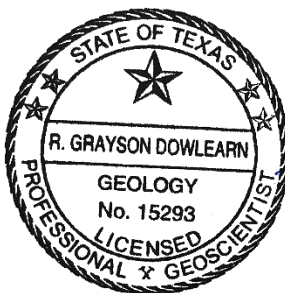


Lower Trinity Groundwater Conservation District

Part 2 – Data Required for Management Plan GAM Run 24-007



Zedric Capus, GIT and Grayson Dowlearn, P.G.
Texas Water Development Board
Groundwater Modeling Department
June 28, 2024



Grayson Dowlearn
6/28/2024

INTRODUCTION

Texas Water Code § 36.1071(h), states that, in developing its groundwater management plan, a groundwater conservation district shall use groundwater availability modeling information provided by the Executive Administrator of the Texas Water Development Board (TWDB) in conjunction with any available site-specific information provided by the district for review and comment to the Executive Administrator.

The TWDB provides data and information to the Lower Trinity Groundwater Conservation District in two parts. This report constitutes part 2, the required groundwater availability modeling information, which includes:

1. the annual amount of recharge from precipitation, if any, to the groundwater resources within the district;
2. the annual volume of water that discharges from the aquifer to springs and any surface-water bodies, including lakes, streams, and rivers, for each aquifer within the district; and
3. the annual volume of flow into and out of the district within each aquifer and between aquifers in the district.

This report replaces the results of GAM Run 19-003 (Anaya, 2019). We used two groundwater availability models for the Lower Trinity Groundwater Conservation District. Information for the [Yegua-Jackson Aquifer](#) is from version 1.01 of the groundwater availability model for the Yegua-Jackson Aquifer (Deeds and others, 2010). Information for the [Gulf Coast Aquifer System](#) is from version 4.01 of the groundwater availability model for the northern portion of the Gulf Coast Aquifer System (Ellis and others, 2023).

The groundwater management plan for the Lower Trinity Groundwater Conservation District should be adopted by the district on or before September 21, 2024 and submitted to the Executive Administrator of the TWDB on or before October 21, 2024. The current management plan for the Lower Trinity Groundwater Conservation District expires on December 20, 2024.

METHODS

In accordance with the provisions of the Texas Water Code § 36.1071 (h), the groundwater availability models mentioned above were used to estimate information for the Lower Trinity Groundwater Conservation District management plan. The average annual water budget values for recharge, surface-water outflow, inflow to the district, outflow from the district, and the flow between aquifers within the district are summarized in this report.

Values may differ from the previous report as a result of routine updates to the spatial grid file used to define county, groundwater conservation district, and aquifer boundaries, which can impact the calculated water budget values. Additionally, the approach used for analyzing model results is reviewed during each update and may have been refined to better delineate groundwater flows. Finally, results may differ due to the use of more recent models or techniques.

It is important to note that sub-regional water budgets are not exact. This is due to the size of the model cells and the approach used to extract data from the model. To avoid double accounting, a model cell that straddles a political boundary, such as a district or county boundary, is assigned to one side of the boundary based on the location of the centroid of the model cell. For example, if a cell contains two counties, the cell is assigned to the county where the centroid of the cell is located.

If the Lower Trinity Groundwater Conservation District determines that the district boundaries used in the assessment do not reflect current conditions after reviewing the figures, please notify the TWDB Groundwater Modeling Department at your earliest convenience.

The flow components presented in this report do not represent the full groundwater budget. If additional inflow and outflow information would be helpful for planning purposes, the district may submit a request in writing to the [TWDB Groundwater Modeling Department](#) for the full groundwater budget.

Models and Aquifers

Groundwater availability model for the Yegua-Jackson Aquifer

- Version 1.01 (Deeds and others, 2010)
- The model was run with MODFLOW-2000 (Harbaugh and others, 2000).
- Water budgets were extracted for the historical calibration period (1980 through 1997) using ZONEBUDGET 3.1 (Harbaugh, 2009).
- This model was used to analyze the following aquifer:
 - [Yegua-Jackson Aquifer](#)

Groundwater availability model for the northern portion of the Gulf Coast Aquifer System

- Version 4.01 (Ellis and others, 2023)
- The model was run with MODFLOW-6 (Langevin and others, 2017).
- Water budgets were extracted for the historical calibration period (1980 through 2018) using ZONEBUDGET for MODFLOW-6 (Langevin and others, 2017).
- This model was used to analyze the following aquifer:
 - [Gulf Coast Aquifer System](#)

For more information on model parameters, packages used to simulate groundwater flow, other model layers, or model assumptions, please see the associated model reports linked in the References section.

RESULTS

A groundwater budget summarizes the amount of water entering and leaving the aquifer according to the groundwater availability model. Selected groundwater budget components listed below were extracted from the groundwater availability model results for the [Yegua-Jackson Aquifer](#), and the [Gulf Coast Aquifer System](#) located within Lower Trinity Groundwater Conservation District:

1. [Precipitation recharge](#) - the areally distributed recharge sourced from precipitation falling on the outcrop areas of the aquifers (where the aquifer is exposed at land surface) within the district.
2. [Surface-water outflow](#) - the total water discharging from the aquifer (outflow) to surface-water features such as streams, reservoirs, and springs.
3. [Flow into and out of district](#) - the lateral flow within the aquifer between the district and adjacent counties.
4. [Flow between aquifers](#) - the net vertical flow between the aquifer and adjacent aquifers or confining units. This flow is controlled by the relative water levels in each aquifer and aquifer properties of each aquifer or confining unit that define the amount of leakage that occurs.

The information needed for the district's management plan is summarized in Tables 1 and 2. Figures 1 and 3 show the area of the model from which the values in Tables 1 and 2 were extracted. Figures 2 and 4 provide a generalized diagram of the groundwater flow components provided in Tables 1 and 2.

Table 1: Summarized information for the Yegua-Jackson Aquifer. All values are reported in acre-feet per year and rounded to the nearest 1 acre-foot.

Management plan requirement	Aquifer or confining unit	Results
Estimated annual amount of recharge from precipitation to the district	Yegua-Jackson Aquifer	4,114
Estimated annual volume of water that discharges from the aquifer to springs and any surface water body including lakes, streams, and rivers	Yegua-Jackson Aquifer	3,879
Estimated annual volume of flow into the district within each aquifer in the district	Yegua-Jackson Aquifer	1,950
Estimated annual volume of flow out of the district within each aquifer in the district	Yegua-Jackson Aquifer	2,825
Estimated net annual volume of flow between each aquifer in the district	To Yegua-Jackson Aquifer from Yegua-Jackson equivalent units	293
	To Yegua-Jackson Aquifer from Gulf Coast Aquifer System	140

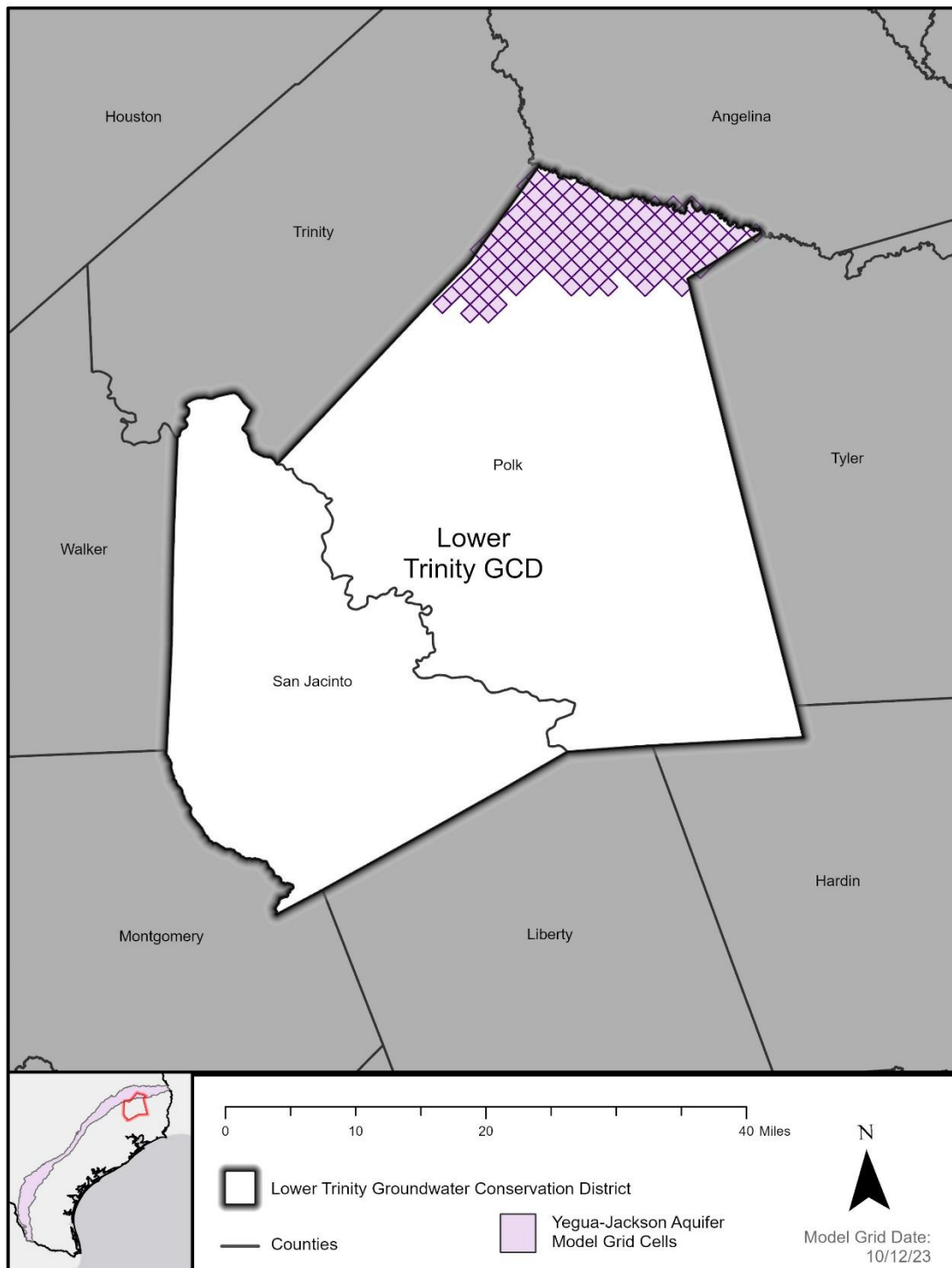
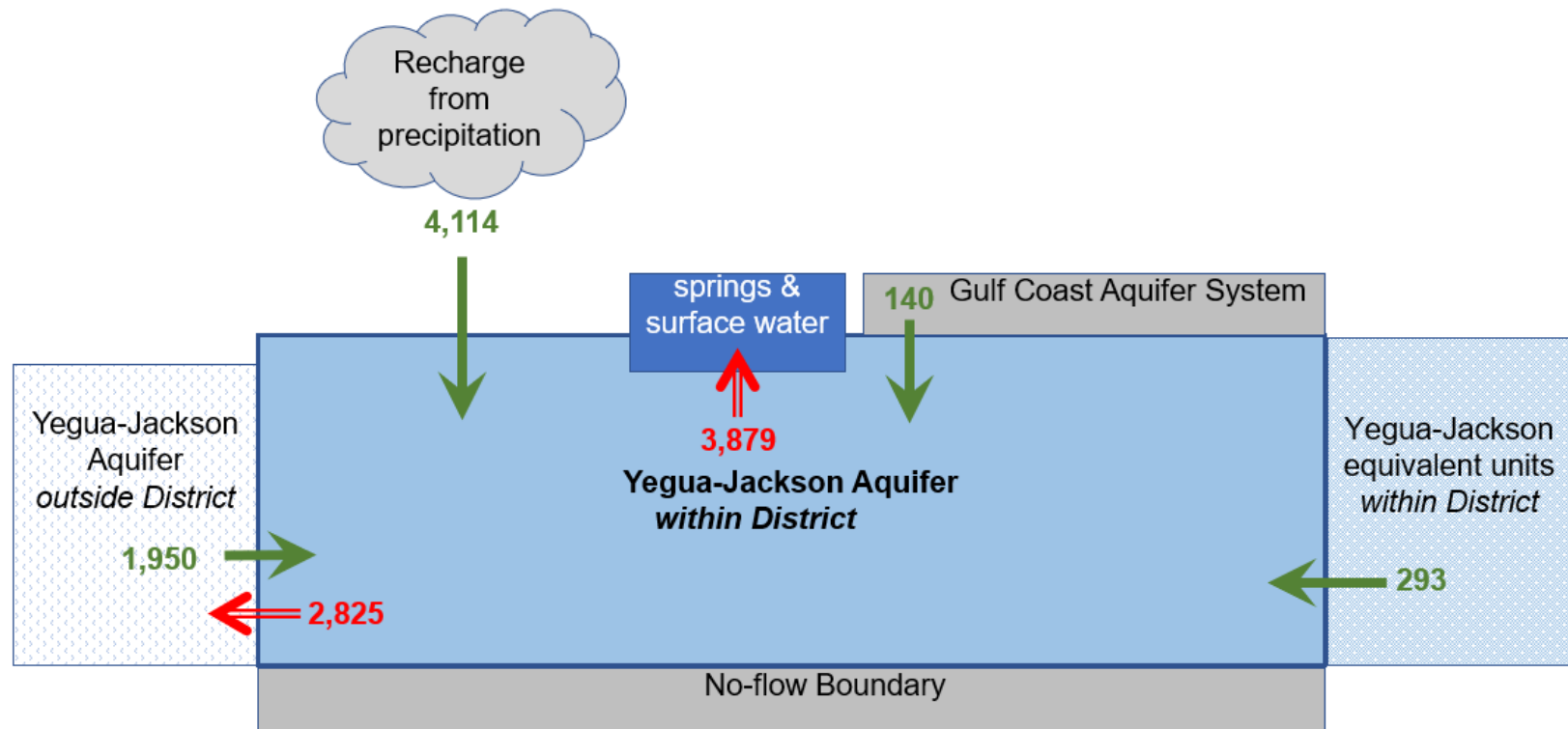


Figure 1: Area of the groundwater availability model for the Yegua-Jackson Aquifer from which the information in Table 1 was extracted (the Yegua-Jackson Aquifer extent within the district boundary).



Caveat: This diagram only includes the water budget items provided in Table 1. A complete water budget would include additional inflows and outflows. For a full groundwater budget, please submit a request in writing to the Groundwater Modeling Department.

Figure 2: Generalized diagram of the summarized budget information from Table 1, representing directions of flow for the Yegua-Jackson Aquifer within the Lower Trinity Groundwater Conservation District. Flow values are expressed in acre-feet per year.

Table 2: Summarized information for the Gulf Coast Aquifer System. All values are reported in acre-feet per year and rounded to the nearest 1 acre-foot.

Management plan requirement	Aquifer or confining unit	Results
Estimated annual amount of recharge from precipitation to the district	Gulf Coast Aquifer System	87,851
Estimated annual volume of water that discharges from the aquifer to springs and any surface water body including lakes, streams, and rivers	Gulf Coast Aquifer System	80,603
Estimated annual volume of flow into the district within each aquifer in the district	Gulf Coast Aquifer System	5,140
Estimated annual volume of flow out of the district within each aquifer in the district	Gulf Coast Aquifer System	18,329
Estimated net annual volume of flow between each aquifer in the district	From Gulf Coast Aquifer System to Gulf Coast Aquifer System equivalent units	225
	From Gulf Coast Aquifer System to Yegua-Jackson Aquifer	140*
	From Gulf Coast Aquifer System to Yegua-Jackson equivalent units	225*

* Flow values between the Gulf Coast Aquifer System and the Yegua-Jackson Aquifer were extracted from the groundwater availability model for the Yegua-Jackson Aquifer.

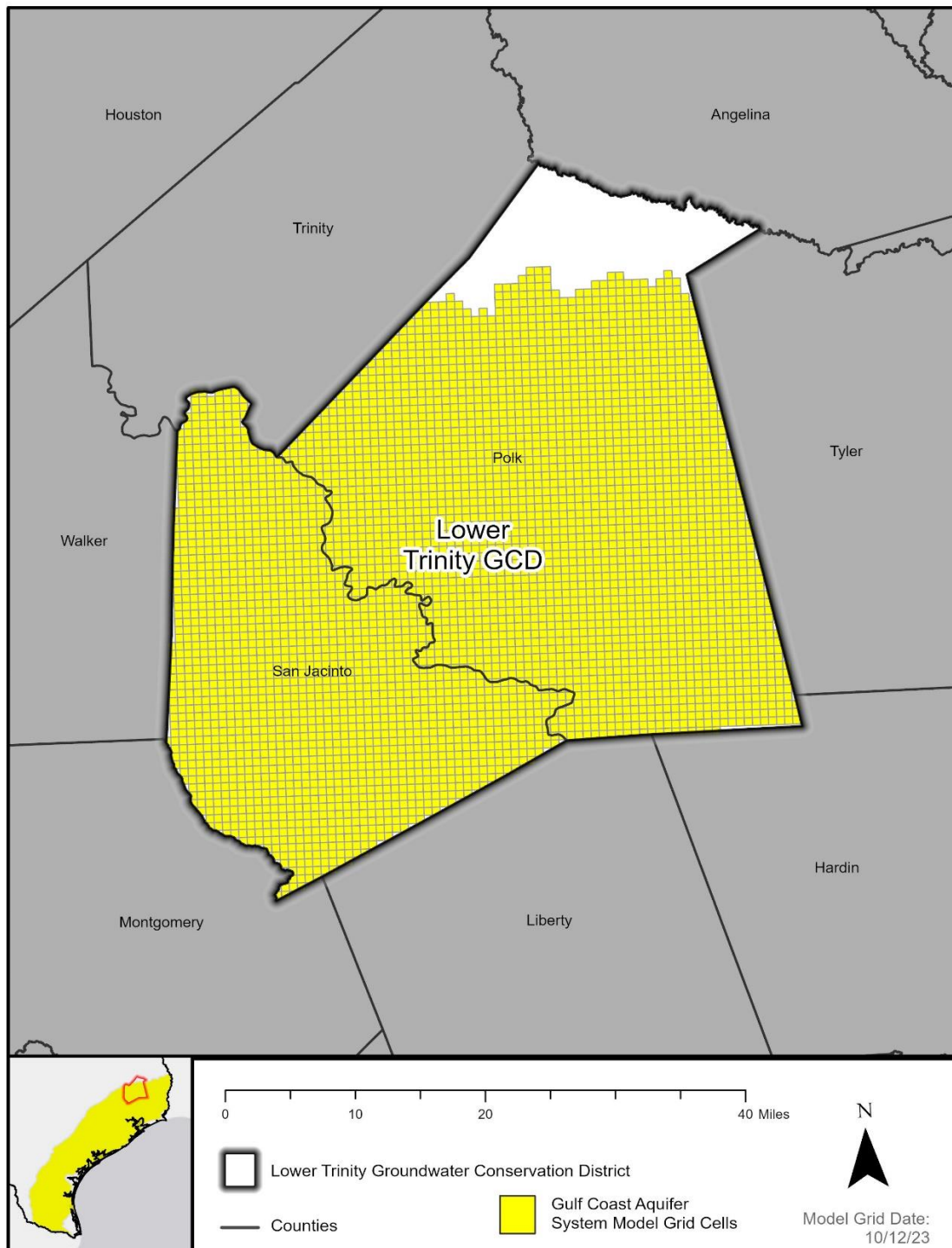
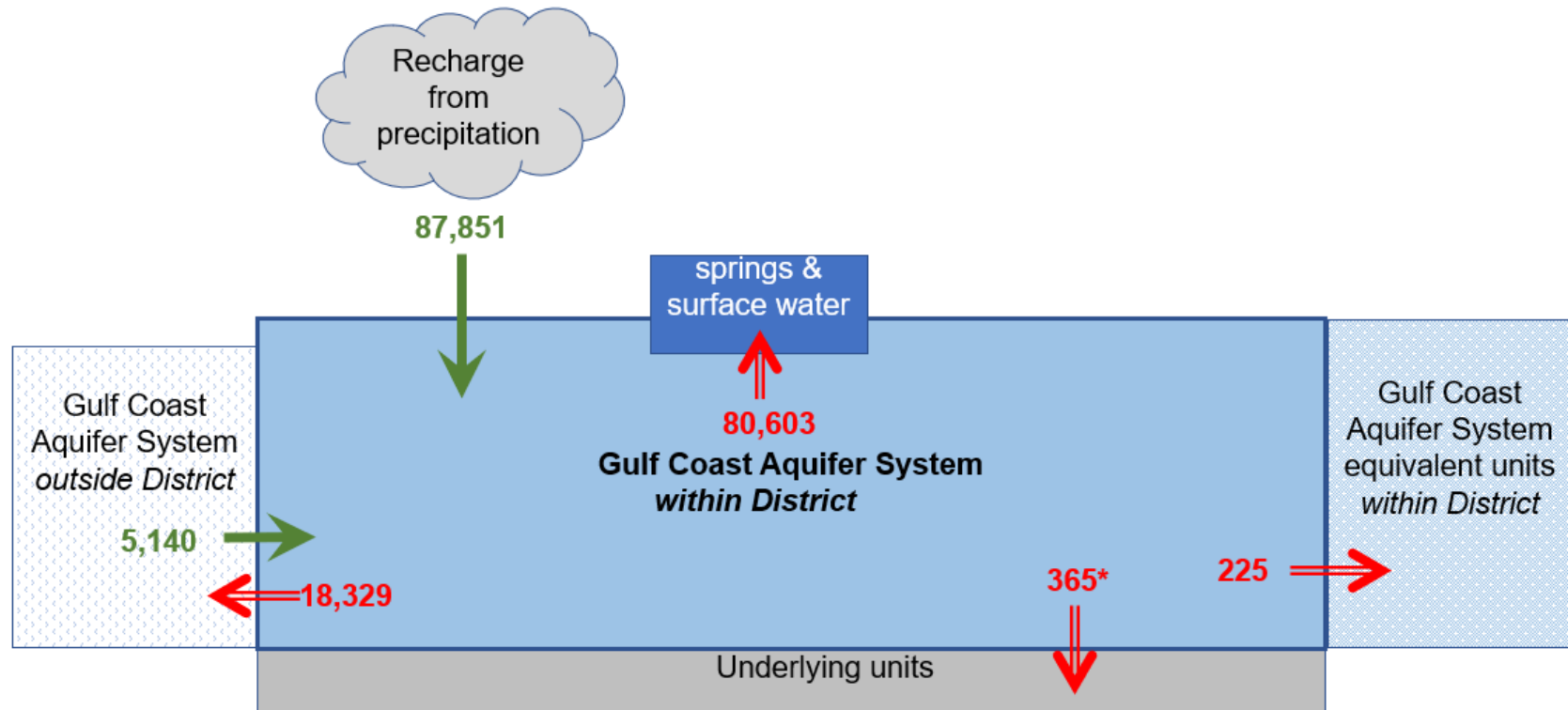


Figure 2: Area of the groundwater availability model for the Gulf Coast Aquifer System from which the information in Table 2 was extracted (the Gulf Coast Aquifer System extent within the district boundary).



*Flow to underlying units includes 225 acre-feet per year to Yegua-Jackson equivalent units and 140 acre-feet per year to the Yegua-Jackson Aquifer.

Caveat: This diagram only includes the water budget items provided in Table 2. A complete water budget would include additional inflows and outflows. For a full groundwater budget, please submit a request in writing to the Groundwater Modeling Department.

Figure 4: Generalized diagram of the summarized budget information from Table 2, representing directions of flow for the Gulf Coast Aquifer System Aquifer within the Lower Trinity Groundwater Conservation District. Flow values are expressed in acre-feet per year.

LIMITATIONS

The groundwater models used in completing this analysis are the best available scientific tools that can be used to meet the stated objectives. To the extent that this analysis will be used for planning purposes and/or regulatory purposes related to pumping in the past and into the future, it is important to recognize the assumptions and limitations associated with the use of the results. In reviewing the use of models in environmental regulatory decision making, the National Research Council (2007) noted:

“Models will always be constrained by computational limitations, assumptions, and knowledge gaps. They can best be viewed as tools to help inform decisions rather than as machines to generate truth or make decisions. Scientific advances will never make it possible to build a perfect model that accounts for every aspect of reality or to prove that a given model is correct in all respects for a particular regulatory application. These characteristics make evaluation of a regulatory model more complex than solely a comparison of measurement data with model results.”

A key aspect of using the groundwater model to evaluate historic groundwater flow conditions includes the assumptions about the location in the aquifer where historic pumping was placed. Understanding the amount and location of historical pumping is as important as evaluating the volume of groundwater flow into and out of the district, between aquifers within the district (as applicable), interactions with surface water (as applicable), recharge to the aquifer system (as applicable), and other metrics that describe the impacts of that pumping. In addition, assumptions regarding precipitation, recharge, and interaction with streams are specific to particular historic time periods.

Because the application of the groundwater models was designed to address regional scale questions, the results are most effective on a regional scale. The TWDB makes no warranties or representations related to the actual conditions of any aquifer at a particular location or at a particular time.

It is important for groundwater conservation districts to monitor groundwater pumping and overall conditions of the aquifer. Because of the limitations of the groundwater model and the assumptions in this analysis, it is important that the groundwater conservation districts work with the TWDB to refine this analysis in the future given the reality of how the aquifer responds to the actual amount and location of pumping now and in the future. Historic precipitation patterns also need to be placed in context as future climatic conditions, such as dry and wet year precipitation patterns, may differ and affect groundwater flow conditions.

REFERENCES

- Anaya, R., 2019, GAM Run 19-003: Texas Water Development Board
<https://www.twdb.texas.gov/groundwater/docs/GAMruns/GR19-003.pdf>.
- Deeds, N. E., Yan, T., Singh, A., Jones, T. L., Kelley, V. A., Knox, P. R., and Young, S. C., 2010, Groundwater availability model for the Yegua-Jackson Aquifer: Final report prepared for the Texas Water Development Board by INTERA, Inc., 582 p., www.twdb.texas.gov/groundwater/models/gam/ygjk/YGJK_Model_Report.pdf.
- Ellis, J.H., Knight, J.E., White, J.T., Sneed, M., Hughes, J.D., Ramage, J.K., Braun, C.L., Teeple, A., Foster, L., Rendon, S.H., and Brandt, J., 2023, Hydrogeology, land-surface subsidence, and documentation of the Gulf Coast Land Subsidence and Groundwater-Flow (GULF) model, southeast Texas, 1897–2018 (ver. 1.1, November 2023): U.S. Geological Survey Professional Paper 1877, 425 p., <https://pubs.usgs.gov/pp/pp1877/pp1877.pdf>
- Harbaugh, A.W., Banta, E.R., Hill, M.C., and McDonald, M.G., 2000, MODFLOW-2000, The U.S. Geological Survey modular ground-water model-User guide to modularization concepts and the ground-water flow process: U.S. Geological Survey, Open-File Report 00-92., 121 p., <https://water.usgs.gov/nrp/gwsoftware/modflow2000/ofr00-92.pdf>.
- Harbaugh, A. W., 2009, Zonebudget Version 3.01, A computer program for computing subregional water budgets for MODFLOW ground-water flow models: U.S. Geological Survey Groundwater Software <https://water.usgs.gov/water-resources/software/ZONEBUDGET/zonbud3.pdf>.
- Langevin, C.D., Hughes, J.D., Banta, E.R., Provost, A.M., Niswonger, R.G., and Panday, Sorab, 2017, MODFLOW 6 Modular Hydrologic Model: U.S. Geological Survey Software., <https://pubs.usgs.gov/tm/06/a57/tm6a57.pdf>.
- National Research Council, 2007, Models in Environmental Regulatory Decision Making Committee on Models in the Regulatory Decision Process, National Academies Press, Washington D.C., 287 p., <http://www.nap.edu/catalog/11972/models-in-environmental-regulatory-decision-making>.
- Texas Water Code § 36.1071