



P.O. Box 13231, 1700 N. Congress Ave.  
Austin, TX 78711-3231, [www.twdb.texas.gov](http://www.twdb.texas.gov)  
Phone (512) 463-7847, Fax (512) 475-2053

## CATEGORICAL EXCLUSION

### TO ALL INTERESTED AGENCIES AND PUBLIC GROUPS:

As provided by the environmental review process adopted in the rules of the Texas Water Development Board (TWDB), 31 Texas Administrative Code (TAC) § 371.41, for projects to be funded through the Drinking Water State Revolving Fund (DWSRF) program and consistent with the National Environmental Policy Act, 42 United States Code § 4321, *et seq.*, the TWDB has determined that the proposed action identified below may be exempted from comprehensive environmental review:

Loma Alta Water Supply Corporation, Hale County, Texas  
TWDB DWSRF Project No. 62988  
Water System Improvements Project  
Total Financing Amount: \$300,000  
Loan No. LF1001803

To meet its customers' demands, the Loma Alta Water Supply Corporation (Corporation) utilizes groundwater from an existing well yielding water with high concentrations of nitrates. Nitrate levels in the Corporation's treated water exceed water quality standards, which the Corporation's existing infrastructure is unable to maintain. This problem is exacerbated by the deteriorated condition of some components of the water system. The Corporation is proposing to use \$300,000 in financing from the DWSRF program for the Water System Improvements Project to install: 1) approximately 25 feet of 2-inch diameter water supply pipeline to interconnect the Corporation's system with that of adjacent Ebeling Water Supply Corporation; 2) a new 5,000-gallon blending tank to reduce the nitrate concentration; 3) new service pumps to compensate for separate pressure planes in the two systems; 4) new service meters at each of 24 existing connections; and 5) replacements for its existing sand filtration devices. In addition, the Corporation plans to remove two existing 315-gallon pressure tanks from service. Note: These project elements are located at sites identified as Option 1 in the accompanying project area map.

The TWDB may not fund testing, remediation, removal, disposal, or related works for contaminated or potentially contaminated materials; however, the project proponent should ensure that, if found, such materials are tested, removed, and disposed of in accordance with applicable state and federal laws.

There are no previously recorded significant or potentially significant historical or cultural sites within or adjacent to the project footprint, according to the Texas Historical Commission's Archeological Sites Atlas, nor is the proposed project within a protected area surrounding a historic cemetery, structure, or district. The proposed project will not adversely impact waters of

#### Our Mission

Leading the state's efforts  
in ensuring a secure  
water future for Texas

#### Board Members

L'Oreal Stepney, P.E., Chairwoman | W. Brady Franks, Board Member | Ashley Morgan, Board Member  
Bryan McMath, Executive Administrator

the United States, including wetlands, and is not located within a Special Flood Hazard Area designated by the Federal Emergency Management Agency, which mapped the 100-year floodplain elsewhere in the vicinity; therefore, coordination with the local floodplain administrator was not required. In addition, the proposed project is not expected to impact threatened or endangered species or their habitat. Construction activities would occur in areas previously converted from use as farmland protected under the federal Farmland Protection Policy Act or would involve underground installations that do not constitute permanent land use conversion. The Corporation will utilize accepted erosion control methods during construction.

The staff of the TWDB previously recommended issuance of a Categorical Exclusion (CE) for this project. The decision to grant this CE is allowed because the specified project elements will not cause significant adverse impacts to cultural and natural resources. Documentation supporting this determination is on file at the TWDB.

This determination shall be revoked if it is found that

- (1) the project no longer meets the requirements for categorical exclusion from full environmental review as a result of changes in the project;
- (2) the project involves extraordinary circumstances as described in 31 TAC § 371.42; or
- (3) the project may violate or has violated federal, state, local, or tribal laws.

The proposed project must comply with the following standard environmental conditions:

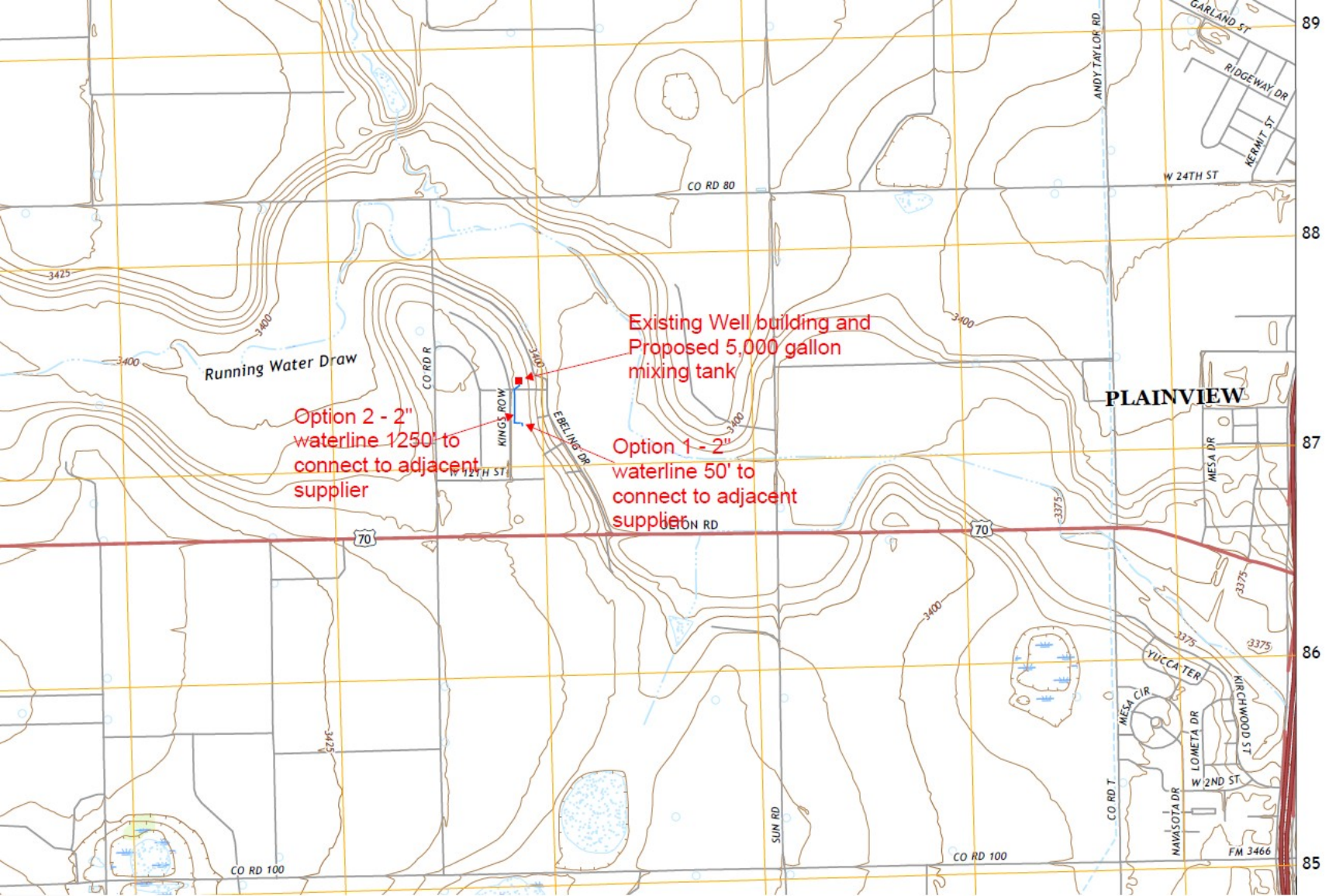
- Consistent with the TWDB Supplemental Construction Contract Conditions (TWDB-0550), the Loma Alta Water Supply Corporation will abide by the standard emergency condition for the discovery of cultural resources.
- Consistent with the TWDB Supplemental Construction Contract Conditions (TWDB-0550), the Loma Alta Water Supply Corporation will abide by the standard emergency condition for the discovery of threatened and endangered species.

Comments regarding this determination may be submitted to the Director of Regional Water Project Development, Texas Water Development Board, P.O. Box 13231, Austin, Texas 78711-3231 or via email at [RWPD-Environmental@twdb.texas.gov](mailto:RWPD-Environmental@twdb.texas.gov).

Sincerely,

T. Clay Schultz, Ph.D., Director  
Regional Water Project Development

Enclosures



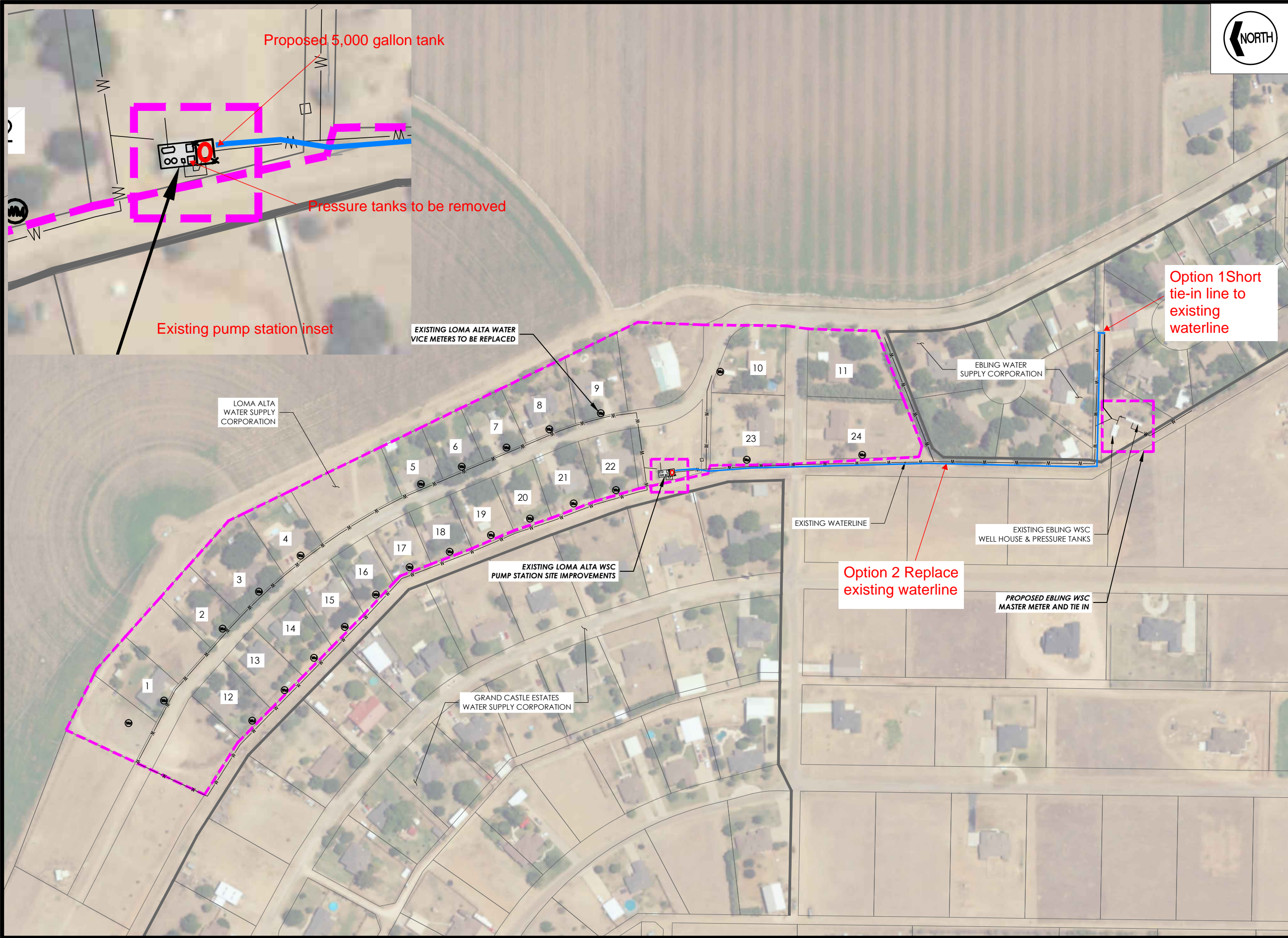
Existing Well building and  
Proposed 5,000 gallon  
mixing tank

Option 2 - 2"  
waterline 1/250'  
to connect to adjacent  
supplier

Option 1 - 2"  
waterline 50'  
to connect to adjacent  
supplier

PLAINVIEW

X:\WS\_Loma\_Alta\_WSC\22414 - Loma Alta WSC Purchased Water Improvements\Drafting\Plans\C:\ENVIRONMENTAL\B SHOWING LINES.dwg Saved By: bday Save Time: 4/30/2025 7:50 AM Plotted by: brendon day Plot Date: 4/30/2025 7:52 AM



THIS DOCUMENT IS RELEASED FOR REVIEW ONLY UNDER THE AUTHORIZATION OF JAMES A. PHILLIPS, P.E. #105116 AND IS NOT TO BE USED FOR CONSTRUCTION, BIDDING OR PERMITTING PURPOSES

ISSUED FOR REVIEW

**JACOB MARTIN**

TBAE FIRM #BR 2261  
 TBPE FIRM # 2448  
 TBPELS FIRM #10194953

LOMA ALTA WSC  
 PURCHASED WATER IMPROVEMENTS  
 PRELIMINARY SITE MAP

NO.	REVISION	DATE
1		

PROJECT #	SCALE
22414	1"=200'

BARS ONE INCH IN LENGTH ON ORIGINAL DRAWING.  
 CHECK SCALE AND ADJUST ACCORDINGLY.

SEQ.	SHEET
1	1