

February 29, 2024

CATEGORICAL EXCLUSION

TO ALL INTERESTED AGENCIES AND PUBLIC GROUPS:

As provided by the state environmental review process adopted in the rules of the Texas Water Development Board (TWDB), 31 Texas Administrative Code (TAC) §371.41, for projects to be funded through the Drinking Water State Revolving Fund (DWSRF) Program and consistent with the National Environmental Policy Act, 42 United States Code §4321, *et seq.*, the TWDB staff has determined that the proposed action identified below may be exempted from formal environmental review requirements:

City of Gladewater, Gregg and Upshur Counties, Texas
TWDB DWSRF Project No. 62952
Phase 3 Drinking Water System Improvements
Total Financing Amount: \$2,791,380
Loan No. L1001688
Grant No. LF1001689

The City of Gladewater (City) is proposing to use \$2,791,380 in financing from the DWSRF program for the Phase 3 Drinking Water System Improvements Project to replace approximately 12,000 linear feet (LF) of water main, upgrade the Allison Avenue elevated storage tank (EST), and rehabilitate the raw water pump station.

Work performed at the EST includes upgrades to tank access and safety features and supplying new interior and exterior coating. At the raw water pump station, one pump will be replaced and the electrical power and controls inside the existing pump vault will be rehabilitated.

Existing water mains will be replaced by new lines under existing pavement, within three feet from the original location. The existing lines will be abandoned in place. Environmental impacts will be similar to rehabilitation activities and limited to those associated with excavation, pipe installation, and road repair.

The TWDB may not fund testing, remediation, removal, disposal, or related works for contaminated or potentially contaminated materials. However, the project proponent

Our Mission

Leading the state's efforts
in ensuring a secure
water future for Texas

Board Members

Brooke T. Paup, Chairwoman | George B. Peyton V, Board Member | L'Oreal Stepney, P.E., Board Member
Jeff Walker, Executive Administrator

should ensure that, if found, such materials are tested, removed, and disposed of in accordance with applicable state and federal laws.

There are no previously recorded significant or potentially significant historical or cultural sites within or adjacent to the project footprint, according to the Texas Historical Commission's Archeological Sites Atlas, nor is the proposed project within a protected area surrounding a historic cemetery, structure, or district. The proposed project will not adversely impact waters of the United States, including wetlands. Proposed project components are not located within a 100-year floodplain; therefore, coordination with the local floodplain administrator was not required. In addition, the proposed project is not expected to impact threatened or endangered species or habitat.

To ensure that there would be no adverse environmental impacts associated with project construction, the City coordinated with the Texas Parks and Wildlife Department (TPWD) Wildlife Habitat Assessment Program. In a letter dated January 29, 2024, the TPWD determined that no impacts to rare, threatened, or endangered species were anticipated as a result of this project.

The staff of the TWDB recommend the issuance of a Categorical Exclusion (CE) for this project. The decision to grant a CE is allowed because the specified project elements will not cause significant adverse impacts to the quality of the human environment or protected natural resources. Documentation supporting this determination is on file at the TWDB.

This determination shall be revoked if it is found that:

- (1) the project no longer meets the requirements for a categorical exclusion as a result of changes in the project;
- (2) the project involves extraordinary circumstances as described in 31 TAC §371.42; or
- (3) the project may violate or has violated federal, state, local, or tribal laws.

The proposed project must comply with the following standard environmental conditions:

Standard Environmental Conditions

- No activity which may affect properties listed or properties eligible for listing in the National Register of Historic Places or eligible for designation as a State Archeological Landmark is authorized until the City of Gladewater (City) has complied with the provisions of the National Historic Preservation Act and the Antiquities Code of Texas.

The Contractor may encounter unanticipated cultural or archeological deposits during construction. If archeological sites or historic structures which may qualify for designation as a State Archeological Landmark according to the criteria in 13

Texas Administrative Code Chapter 26, or that may be eligible for listing on the National Register of Historic Places in accordance with 36 CFR Part 800, are discovered after construction operations are begun, the Contractor shall immediately cease operations in that particular area and notify the City, the TWDB, and the Texas Historical Commission. The Contractor shall take reasonable steps to protect and preserve the discoveries until they have been inspected by the City's representative and the TWDB. The City will promptly coordinate with the State Historic Preservation Officer and any other appropriate agencies to obtain any necessary approvals or permits to enable the work to continue. The Contractor shall not resume work in the area of the discovery until authorized to do so by the City.

- No activity is authorized that is likely to jeopardize the continued existence of a threatened or endangered species as listed or proposed for listing under the Federal Endangered Species Act (ESA), and/or the State of Texas Parks and Wildlife Code on Endangered Species, or to destroy or adversely modify the habitat of such species.

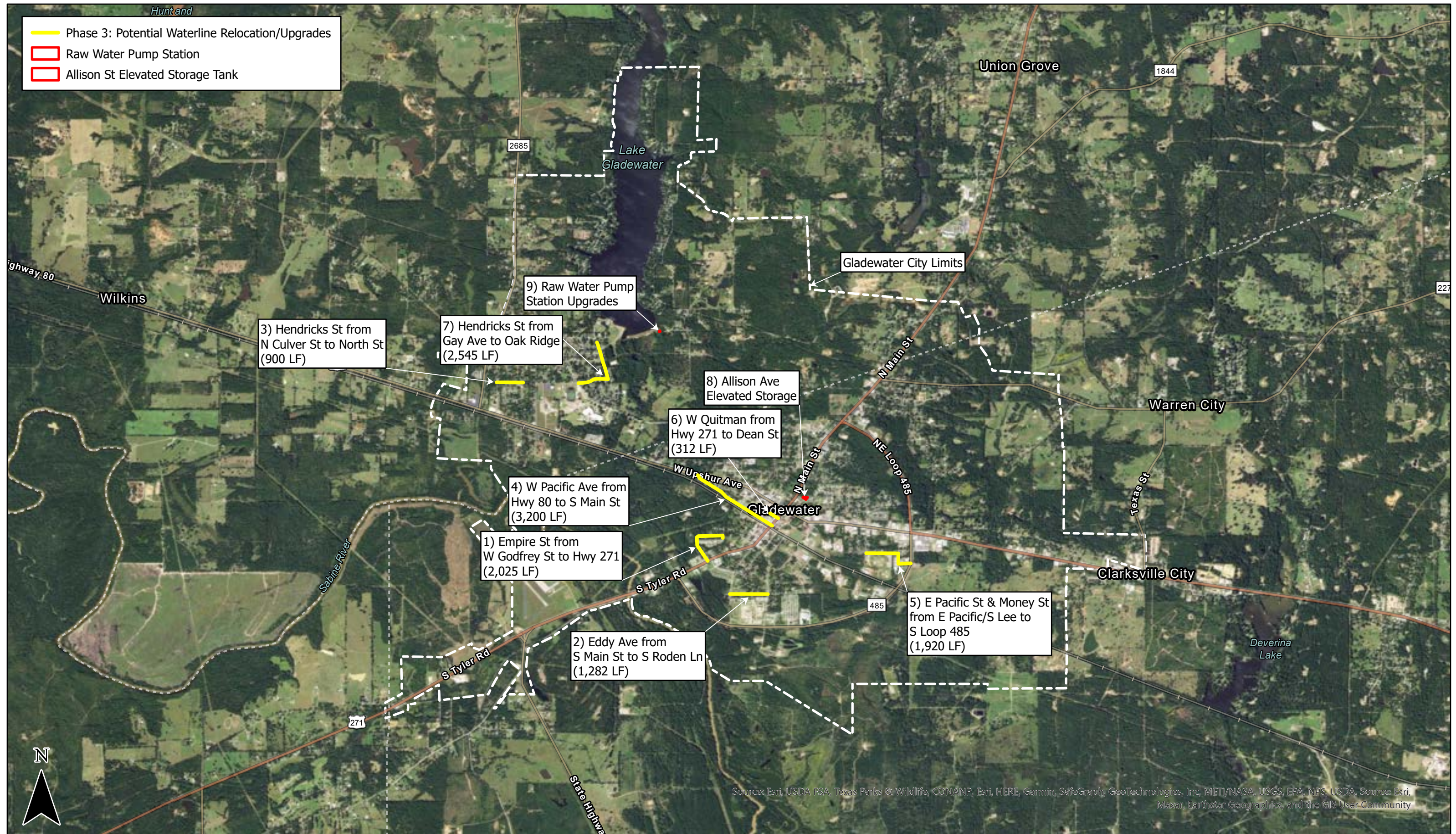
If a threatened or endangered species is encountered during construction, the Contractor shall immediately cease work in the area of the encounter and notify the City, who will immediately implement actions in accordance with the ESA and applicable State statutes. These actions shall include reporting the encounter to the TWDB, the U. S. Fish and Wildlife Service, and the Texas Parks and Wildlife Department, obtaining any necessary approvals or permits to enable the work to continue, or implement other mitigation actions. The Contractor shall not resume construction in the encounter area until authorized by the City.

Comments regarding this determination may be submitted to the Director of Regional Water Project Development, Texas Water Development Board, P.O. Box 13231, Austin, Texas 78711-3231 or via email at RWPD-Environmental@twdb.texas.gov.

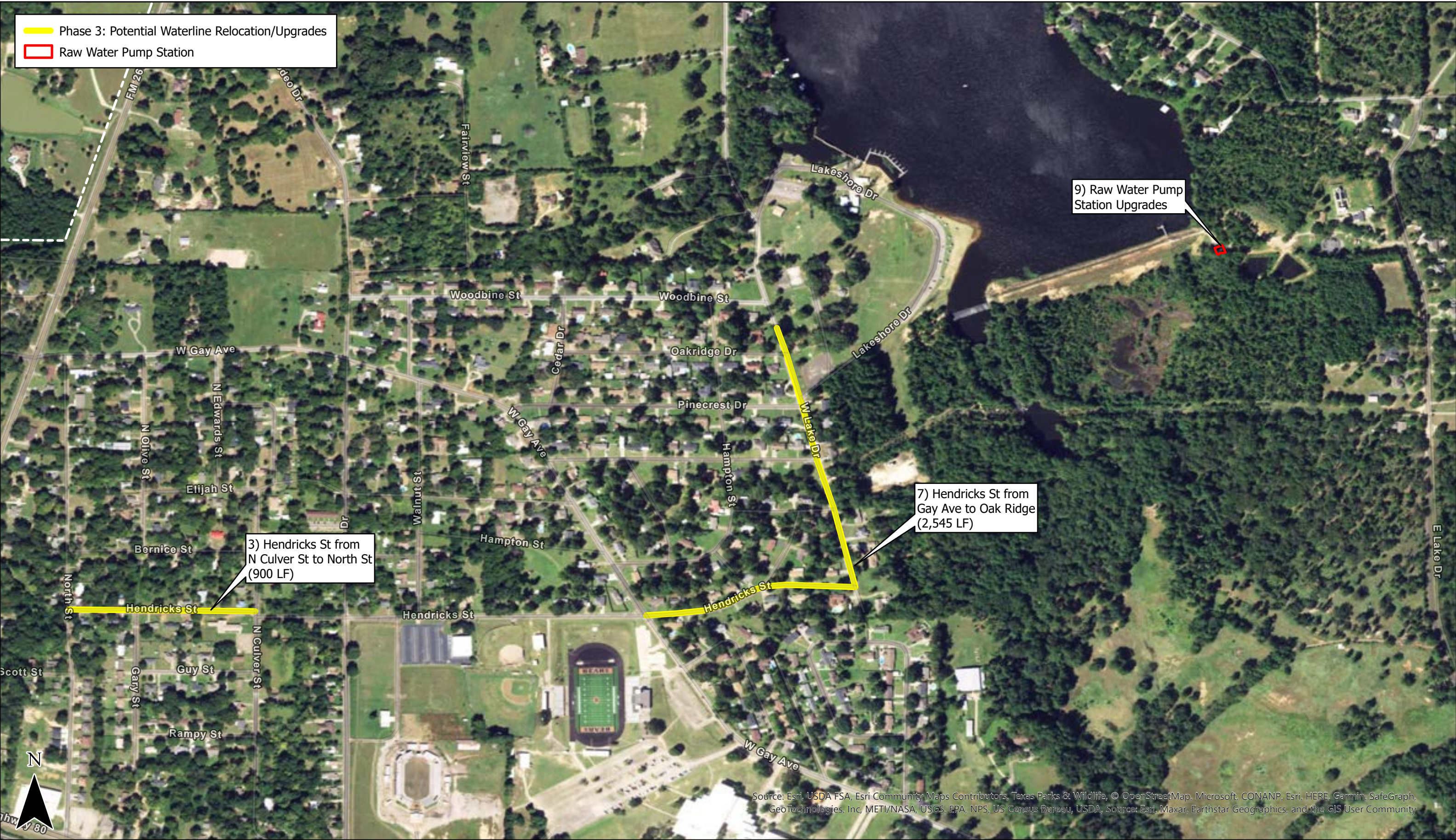
Sincerely,

T. Clay Schultz, Ph.D., Director
Regional Water Project Development

Enclosures

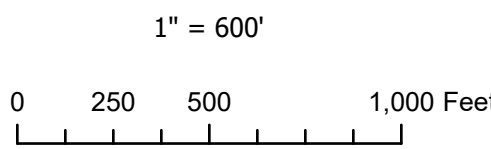


- Phase 3: Potential Waterline Relocation/Upgrades
- Raw Water Pump Station



City of Gladewater
 2022 TWDB PIF - DWSRF Phase 3
 Proposed Improvements - NW Quadrant

SPI
 SCHALMBURG & POLK, INC.
 BEAUMONT · HOUSTON · GARLAND · TERRELL · TYLER
 320 S. Broadway Ave., Suite 200
 Tyler, TX 75703
 903.595.3913
 Firm Registration No. F-520



- Phase 3: Potential Waterline Relocation/Upgrades
- Allison St Elevated Storage Tank

8) Allison Ave Elevated Storage

5) E Pacific St & Money St from E Pacific/S Lee to S Loop 485 (1,920 LF)

Source: Esri, USDA FSA, Esri Community Maps Contributors, Texas Parks & Wildlife, © OpenStreetMap, Microsoft, CONANP, Esri, HERE, Garmin, SafeGraph, GeoTechnologies, Inc, METI/NASA, USGS, EPA, NPS, US Census Bureau, USDA, Source: Esri, Maxar, Earthstar Geographics, and the GIS User Community



SCHALMBURG & POLK, INC.
 BEAUMONT HOUSTON GARLAND TERRELL TYLER
 320 S. Broadway Ave., Suite 200
 Tyler, TX 75703
 903.595.3913
 Firm Registration No. F-520

City of Gladewater
 2022 TWDB PIF - DWSRF Phase 3
 Proposed Improvements - NE Quadrant

1" = 700'

0 300 600 1,200 Feet

Raw Water Pump Station



Source: Esri, USDA FSA, Esri Community Maps Contributors, Texas Parks & Wildlife, © OpenStreetMap, Microsoft, CONANP, Esri, HERE, Garmin, SafeGraph, GeoTechnologies, Inc, METI/NASA, USGS, EPA, NPS, US Census Bureau, USDA, Source: Esri, Maxar, Earthstar Geographics, and the GIS User Community

Allison St Elevated Storage Tank



Source: Esri, USDA FSA, Esri Community Maps Contributors, Texas Parks & Wildlife, © OpenStreetMap, Microsoft, CONANP, Esri, HERE, Garmin, SafeGraph, GeoTechnologies, Inc, METI/NASA, USGS, EPA, NPS, US Census Bureau, USDA, Source: Esri, Maxar, Earthstar Geographics, and the GIS User Community



City of Gladewater
2022 TWDB PIF - DWSRF Phase 3
Proposed Improvements - Raw Water Pump Station & Allison St EST

