



P.O. Box 13231, 1700 N. Congress Ave.
Austin, TX 78711-3231, www.twdb.texas.gov
Phone (512) 463-7847, Fax (512) 475-2053

ENVIRONMENTAL DETERMINATION

TO: File
FROM: T. Clay Schultz, Ph.D., Director, Regional Water Project Development
SUBJECT: West Harris County Regional Water Authority, Harris County, Texas
TWDB SWIFT Project No. 51003
Internal Distribution Line – Region 1, 2, 3
ED Update and Route Adjustments
Total Financing Amount: \$81,530,000
Loan No. LM15004, 16004, 17004, 18004, 19004, 20004, 21004, 22004, 23004, 24004, 25004

The environmental review for the West Harris County Regional Water Authority’s (Authority) proposed Internal Distribution Line – Region 1, 2, 3 project has been completed consistent with 31 Texas Administrative Code (TAC) § 363.14. The Authority is proposing to use \$81,530,000 in financing from the State Water Implementation Fund for Texas (SWIFT) program to complete distribution lines in order to deliver surface water to the area in compliance with the Harris-Galveston Subsidence District’s ground water reduction requirements. This project was previously approved in an Environmental Determination issued June 5, 2017. This finding is to update the previous environmental finding as well as address alignment revisions which were made after the original finding was issued. These revised routes are needed due to right-of-way availability, utility conflicts, and improved efficiency in delivery routes. The route changes are minor and in the same general vicinity as the originally approved alignments. The revised surface water transmission line alignments total approximately 43 miles. The lines vary in diameter from 12 inches to 54 inches and will be installed at a minimum depth of 6 feet.

Results of this environmental review are documented by the accompanying Memorandum, which contains mitigative environmental conditions that will be applied to the project to avoid significant adverse impact on waters of the U.S., floodplains, cultural or historical resources, threatened or endangered species, and protected migratory bird species.

Based on a detailed environmental review of the previous Environmental Determination, as well as planning documents and supplementary materials submitted to the TWDB on January 8 and March 26, 2026, the project meets the requirements of 31 TAC § 363.14 with the following special and standard environmental conditions:

Special Environmental Conditions

- To avoid impacts to potential waters of the U.S., including wetlands, and aquatic habitat, waterline crossings of waterbodies, including wetlands will be performed by a trenchless construction method, with bore pits located outside riparian and/or aquatic habitat

(USACE No. SWG-2016-00915; Project No. SWG-2016-00932; and Project No. SWG-2017-00115).

- Consistent with the Flood Insurance Reform Act of 2004, federal Executive Order 11988 as amended by EO 13690, Texas Water Code Section 16.315, and local floodplain development ordinances, a floodplain development permit will be obtained from the local floodplain administrator prior to construction in, across, or under a Special Flood Hazard Area and TWDB approval of plans and specifications, and any requirements contained therein will be adhered to.

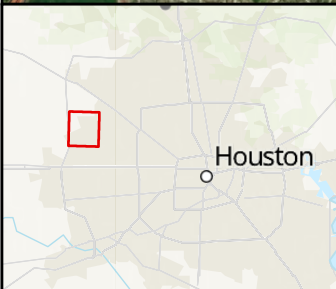
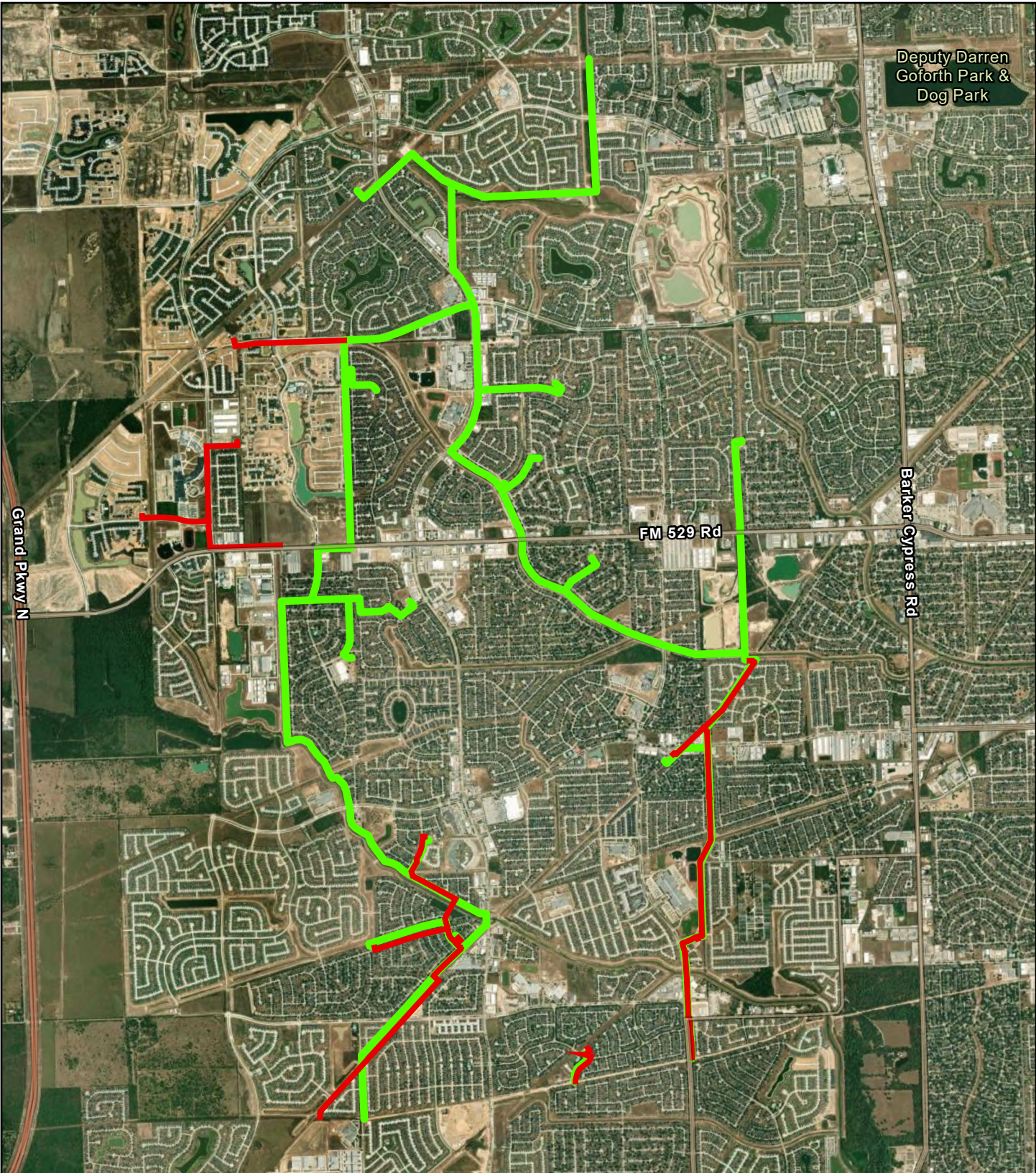
Standard Environmental Conditions

- Consistent with the TWDB Supplemental Construction Contract Conditions (TWDB-0552), the West Harris County Regional Water Authority will abide by the standard emergency condition for the discovery of cultural resources.
- Consistent with the TWDB Supplemental Construction Contract Conditions (TWDB-0552), the West Harris County Regional Water Authority will abide by the standard emergency condition for the discovery of threatened and endangered species.

With the addition of these requirements, design funds may be released once all other requirements are satisfied.

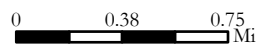
Enclosures

Deputy Darren
Goforth Park &
Dog Park

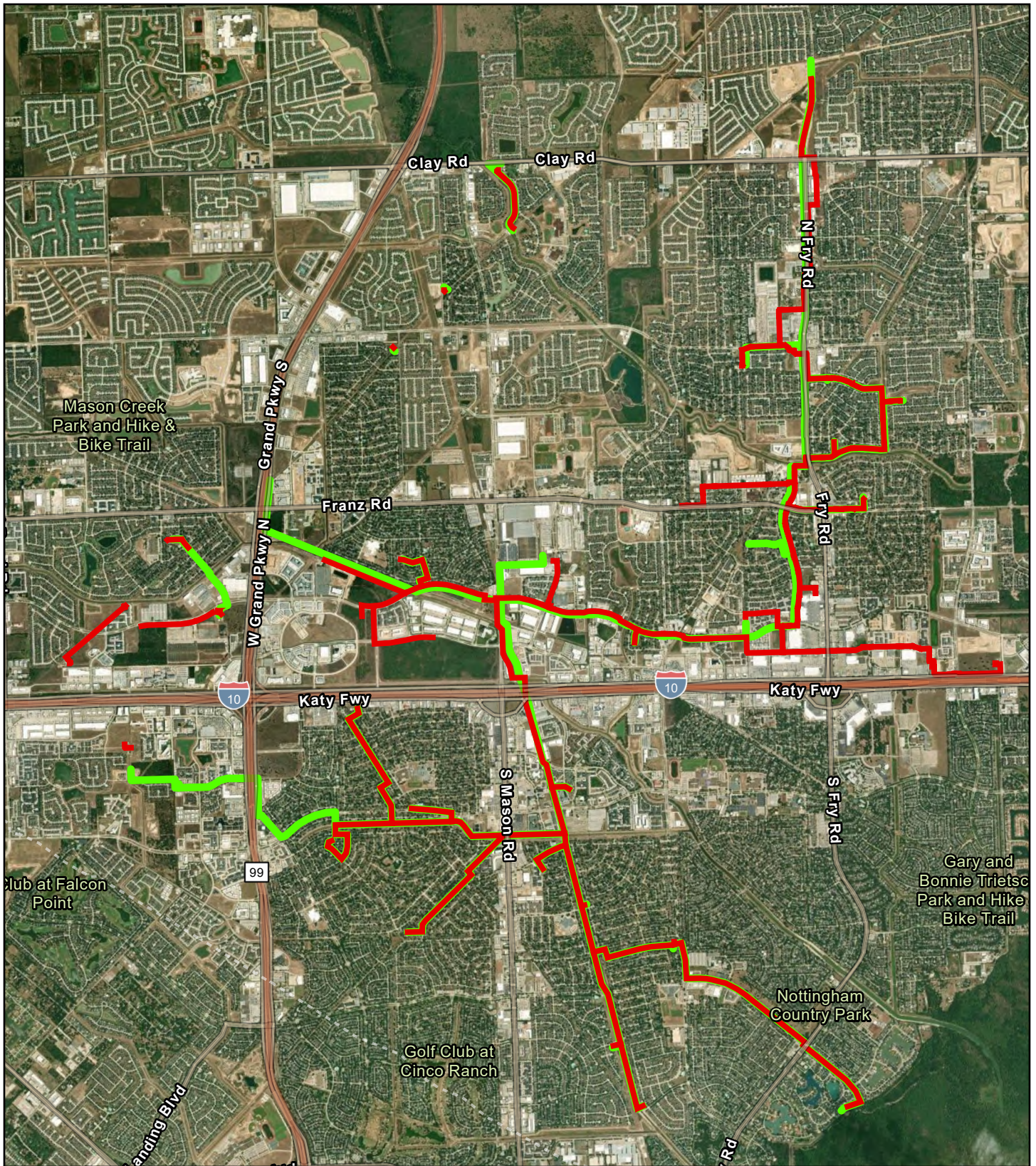


West Harris County Regional Water Authority Capital Improvement Plan - Region 1

- Region 1 - 2025 Proposed Alignments
 - Region 1 - 2016 Approved Alignments
- 2025 Aerial Imagery - ESRI Basemap

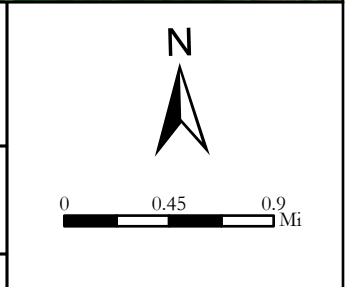


Coordinate System: NAD 1983 StatePlane Texas South Central FIPS 4204 Feet

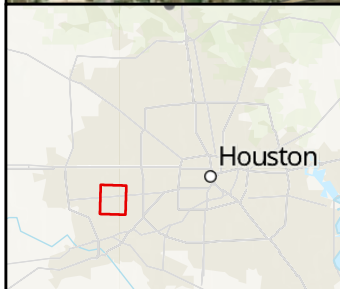
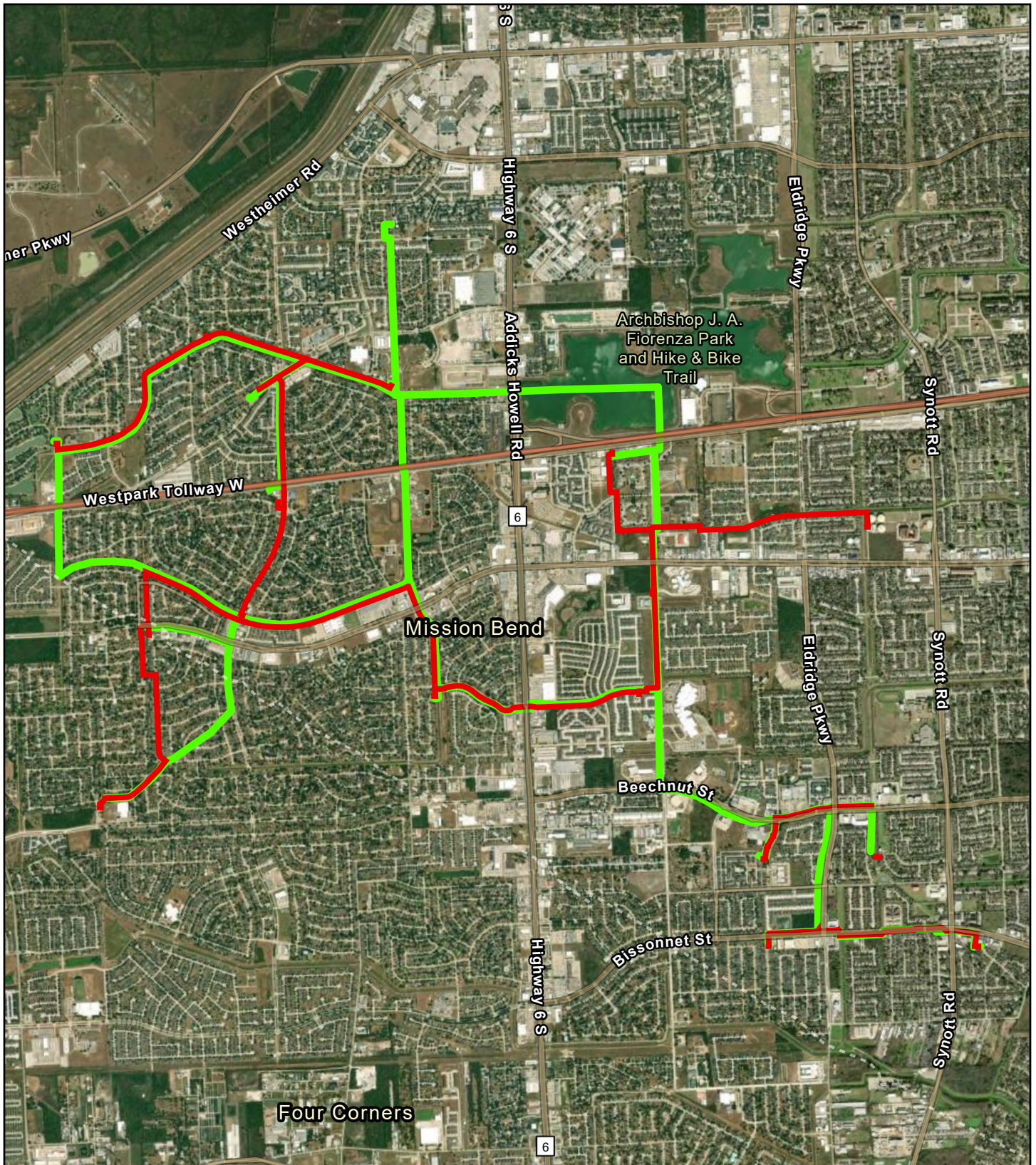


**West Harris County Regional Water Authority
Capital Improvement Plan - Region 2**

- Region 2 - 2025 Proposed Alignments
 - Region 2 - 2016 Approved Alignments
- 2025 Aerial Imagery - ESRI Basemap

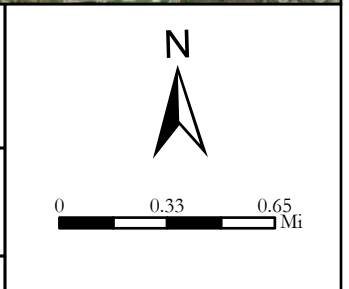


Coordinate System: NAD 1983 StatePlane Texas South Central FIPS 4204 Feet



**West Harris County Regional Water Authority
Capital Improvement Plan - Region 3**

- Region 3 - 2025 Proposed Alignment
 - Region 3 - 2016 Approved Alignments
- 2025 Aerial Imagery - ESRI Basemap



Coordinate System: NAD 1983 StatePlane Texas South Central FIPS 4204 Feet