



P.O. Box 13231, 1700 N. Congress Ave.
Austin, TX 78711-3231, www.twdb.texas.gov
Phone (512) 463-7847, Fax (512) 475-2053

ENVIRONMENTAL DETERMINATION

TO: File

FROM: T. Clay Schultz, Ph.D., Director, Regional Water Project Development

SUBJECT: City of Wharton, Wharton County, Texas
TWDB FIF Project No. 40106
City of Wharton Flood Protection Plan
Total Commitment Amount: \$5,001,157
Loan No. L1001422
Grant No. G1001423

The environmental review for the City of Wharton (City)'s proposed City of Wharton Flood Protection Plan project has been completed consistent with 31 Texas Administrative Code (TAC) § 363.14 and 363.16. The City is proposing to use \$5,001,157 in financing from the Flood Infrastructure Fund (FIF) to construct a 30-ft wide new channel west of Pecan Acres subdivision draining the sheet flow in the area to the E. Milam Street northern roadside ditch, construct 36-in culvert crossings along Kinkaid Ave and Hodges Ln, construct outfall pipes connecting to Santa Fe Ditch, construct 72-in diameter flap gate at Santa Fe Ditch at FM 3012 (Delmas-Kinkaid), and construct a 60-ft wide channel from Stavena Rd. connecting to existing Santa Fe Ditch near SH-60 for a total length of over 3100-ft (Stavena-Nelga). There are four main project areas: Delmas-Kinkaid, Stavena-Nelga, North Caney, and Ahldag Ditch. North Caney and Ahldag Ditch will be funded by the CDBG-DR program and are not covered in this environmental finding. The Texas Water Development Board (TWDB) committed this financing on July 07, 2021. The City closed the financing on October 13, 2021.

This environmental review is documented by the enclosed Environmental Determination (ED), which contains mitigative environmental conditions that will be applied to the project to avoid significant adverse impact on waters of the U.S., floodplains, cultural or historical resources, threatened or endangered species, and protected migratory bird species.

Based on a detailed environmental review of the planning information, the Environmental Data Form received by the TWDB on January 27, 2025, with the supplementary materials submitted to the TWDB on June 2, 2025, the project meets the requirements of 31 TAC § 363.14 with the following special and standard environmental conditions:

Our Mission	:	Board Members
Leading the state's efforts	:	L'Oreal Stepney, P.E., Chairwoman Tonya R. Miller, Board Member
in ensuring a secure	:	
water future for Texas	:	Bryan McMath, Executive Administrator

Special Environmental Conditions

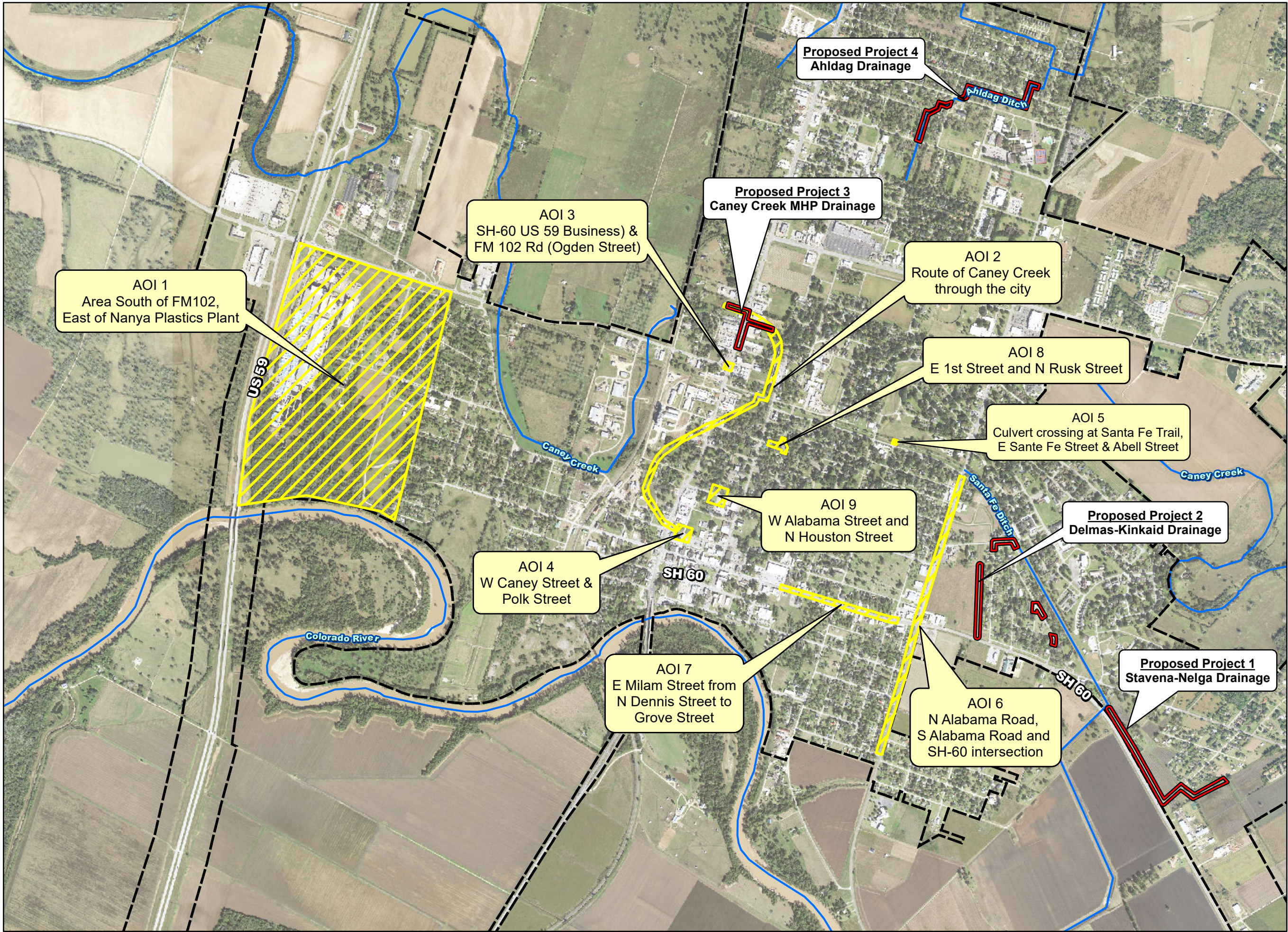
- Consistent with the Flood Insurance Reform Act of 2004, federal Executive Order 11988 as amended by EO 13690, Texas Water Code Section 16.315, and local floodplain development ordinances, a floodplain development permit will be obtained from the local floodplain administrator prior to construction in, across, or under a Special Flood Hazard Area.

Standard Environmental Conditions

- Consistent with the TWDB Supplemental Construction Contract Conditions (TWDB-0552), the City of Wharton (City) will abide by the standard emergency condition for the discovery of cultural resources.
- Consistent with the TWDB Supplemental Construction Contract Conditions (TWDB-0552), the City will abide by the standard emergency condition for the discovery of threatened and endangered species.

With the addition of these requirements, design funds may be released once all other requirements are satisfied.

Enclosures



VICINITY MAP

Scale: 1 inch equals 10 miles

LEGEND

- Proposed Projects
- Areas of Interest
- City of Wharton
- Streams/Channels

IMAGERY PROVIDED BY ESRI

**EXHIBIT 2
PROPOSED PROJECTS
AND AREAS OF
INTEREST (AOI)**

CITY OF WHARTON
WHARTON COUNTY, TEXAS



1 inch equals 1,500 feet

Disclaimer: This product is offered for informational purposes and may not have been prepared for or be suitable for legal, engineering, or surveying purposes. It does not represent an on-the-ground survey and represents only the approximate relative location of property, governmental and/or political boundaries or related facilities to said boundary. No express warranties are made by Jones & Carter, Inc. concerning the accuracy, completeness, reliability, or usability of the information included within this exhibit.



QUIDDITY
ENGINEERING