



P.O. Box 13231, 1700 N. Congress Ave.  
Austin, TX 78711-3231, [www.twdb.texas.gov](http://www.twdb.texas.gov)  
Phone (512) 463-7847, Fax (512) 475-2053

## ENVIRONMENTAL DETERMINATION

**TO:** File

**FROM:** T. Clay Schultz, Ph.D., Director, Regional Water Project Development

**SUBJECT:** City of Junction, Kimble County, Texas  
TWDB FIF Category 2 Project No. 40103  
Water Treatment Plant Raw Water Intake Project  
Total Commitment Amount: \$906,000  
Loan No. L1001266  
Grant No. G1001267

The environmental review for the proposed City of Junction (City) Water Treatment Plant Raw Water Intake project has been completed consistent with 31 Texas Administrative Code (TAC) § 363.14 and 363.16. The City is proposing to use \$906,000 in financing from the Flood Infrastructure Fund (FIF) Program to design and construct a new raw water intake structure in Junction Reservoir that will be protected from changing sediment and water level conditions of the reservoir and South Llano River. The Texas Water Development Board (TWDB) committed this financing on February 25, 2021, and the City closed the financing on June 29, 2021.

This environmental review is documented by the enclosed Environmental Determination (ED), which contains mitigative environmental conditions that will be applied to the project to avoid significant adverse impact on waters of the U.S., floodplains, cultural or historical resources, threatened or endangered species, and protected migratory bird species.

Based on a detailed environmental review of the planning information, the Environmental Data Form received by the TWDB on November 8, 2023, with the supplementary materials submitted to the TWDB on January 17, 2025, the project meets the requirements of 31 TAC § 363.14 with the following special and standard environmental conditions:

### Special Environmental Conditions

- Consistent with the Flood Insurance Reform Act of 2004, federal Executive Order 11988, Texas Water Code Section 16.315, and local floodplain development ordinances, a floodplain development permit will be obtained from the local floodplain administrator prior to construction in a Special Flood Hazard Area.
- The project will be constructed to comply with the terms and conditions of the USACE Nationwide Permit (NWP) program, specifically with NWP 3 - Maintenance,

NWP 7 - Outfall Structures and Associated Intake Structures, and NWP 58 - Utility Line Activities for Water and Other Substances. Additional conditions for the use of these NWPs may result from ongoing coordination between the USACE and USFWS.

- As per an agreement with the Texas Parks and Wildlife Department (TPWD), Ecological & Environmental Planning Program (TPWD Project No. 50737), to ensure compliance with 31 Texas Administrative Code (TAC) Chapter 57, Texas Parks and Wildlife Code, Chapters 1, 12, 64, 67, and 68, the Endangered Species Act of 1973, as amended, the Migratory Bird Treaty Act, and applicable federal regulations pertaining to protected and invasive species, the following measures will be implemented:
  - General construction recommendations will be followed to prevent impacts to protected, aquatic, and invasive species. These include the use of existing facilities for laydown areas, minimization of wildlife trapping in open trenches, avoidance of entanglement hazards of mesh erosion control blankets or mats, and the judicious use and placement of sediment control fencing to exclude wildlife.
  - Consistent with the Endangered Species Act of 1973 as amended, the Migratory Bird Treaty Act, and Texas Parks and Wildlife Code Chapter 64, vegetation clearing must be excluded during the general bird nesting season, March 15 through September 15, to avoid adverse impacts to breeding birds. If vegetation clearing during this time is unavoidable, the area proposed for disturbance will be surveyed by a qualified biologist during the nesting period to identify occupied nests. If nests are observed during surveys, a vegetation buffer area of no less than 150 feet in diameter will remain around the nest until all young have fledged. State and federal regulations as currently interpreted do not permit incidental take.
  - The project will occur within the USFWS-designated Critical Habitat within the South Llano River for the freshwater mussel species Texas fatmucket (*Lampsilis bracteata*). Prior to construction, the City's consultant will prepare an Aquatic Resource Relocation Plan (ARRP) and permit application for coordination with TPWD. The approved ARRP and TPWD-issued permit will facilitate the monitoring and recovery of aquatic resources during dewatering activities. If protected species are identified, then they will be relocated in accordance with the ARRP prepared for the project. Additional permissions and/or documentation that may be required by the USFWS will be conducted according to their guidance and protocols.

#### Standard Environmental Conditions

- Consistent with the TWDB Supplemental Construction Contract Conditions (TWDB-0552), the City of Junction (City) will abide by the standard emergency condition for

the discovery of cultural resources.

- Consistent with the TWDB Supplemental Construction Contract Conditions (TWDB-0552), the City will abide by the standard emergency condition for the discovery of threatened and endangered species.

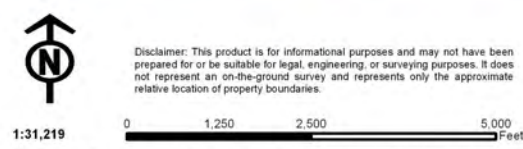
With the addition of these requirements, design funds may be released once all other requirements are satisfied.

Enclosures





Source: Esri, DigitalGlobe, GeoEye, Earthstar Geographics, CNES/Airbus DS, USDA, USGS, AeroGRID, IGN, and the GIS User Community



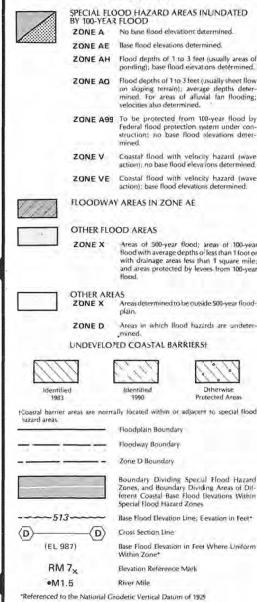
Regional Location Map  
WTP Raw Water Intake  
TWDB Project 40103  
City of Junction





**USGS Topographic Map**  
**City of Junction WTP Raw Water Intake**  
**TWDB Project 40103**

# LEGEND



## NOTES

This map is for use in determining the National Flood Insurance Program. It does not represent any other insurance policy. The community map repository should be consulted for more detailed data on IFEX, and for any information on boundary determinations, prior to use of this map for property purchase or construction purposes.

Areas of Special Flood Hazard (100-year flood) include Zones A, AE, AH, AO, A99, V, VE, and X.

Certain areas not in Special Flood Hazard Areas may be protected by flood control structures.

Boundaries of the floodways were computed at cross sections and interpolated between cross sections. The floodways were based on hydrologic considerations with regard to requirements of the Federal Emergency Management Agency.

Floodway widths in certain areas may be too narrow to show at scale. Refer to Floodway Data Table when floodway widths are shown at scale.

Coastal base flood elevations apply only to areas of 0.5 NODV, and include the effects of wave action. These elevations may also differ significantly from those developed by the National Weather Service for hurricane evacuation planning.

Corporate limits shown are current as of the date of this map. The user should contact appropriate community officials to determine if corporate limits have changed subsequent to the issuance of this map.

**MAP REPOSITORY:**  
City Hall  
730 Main Street  
Junction, Texas 76858  
(Maps available for reference only, not for distribution.)

**INITIAL IDENTIFICATION:**  
MARCH 22, 1974

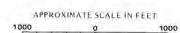
**FLOOD HAZARD BOUNDARY MAP REVISION:**  
AUGUST 20, 1979

**FLOOD INSURANCE RATE MAP EFFECTIVE:**  
SEPTEMBER 28, 1979

**FLOOD INSURANCE RATE MAP REVISIONS:**  
NOVEMBER 4, 1988

Map revised November 5, 1997 to decrease base flood elevations.

To determine if flood insurance is available in this community, contact your insurance agent or call the National Flood Insurance Program at (800) 658-6632.



**NOTE TO USER:**  
Flood hazards shown outside of corporate limits are for information purposes only.

ELEVATION REFERENCE MARKS		
REFERENCE MARK	ELEVATION (FEET NGVD)	DESCRIPTION OF LOCATION
RM 1	1697.62	Top of concrete street monument at the southeast corner of the intersection of 5th Street and Hackberry Street.
RM 2	1698.84	Top of concrete street monument at the northeast corner of 6th Street and Hackberry Street.
RM 3	1702.30	Top of concrete street monument at the northeast corner of 7th Street and Hackberry Street.
RM 4	1704.64	Top of concrete street monument at the northeast corner of 8th Street and Hackberry Street.
RM 5	1706.45	Top of concrete street monument at the northeast corner of 9th Street and Hackberry Street.
RM 6	1709.12	Top of concrete street monument at the northeast corner of 10th Street and Hackberry Street.
RM 7	1710.75	Top of concrete street monument at the southwest corner of 10th Street and N. Llano Street.
RM 8	1705.54	Top of concrete street monument at the southeast corner of 9th Street and N. Llano Street.
RM 9	1701.00	Top of concrete street monument at the southeast corner of 7th Street and N. Llano Street.
RM 10	1700.02	Top of concrete street monument at the southeast corner of 6th Street and N. Llano Street.

## NATIONAL FLOOD INSURANCE PROGRAM

## FIRM FLOOD INSURANCE RATE MAP

CITY OF JUNCTION, TEXAS  
KIMBLE COUNTY

ONLY PANEL PRINTED

COMMUNITY-PANEL NUMBER  
480421 0005 D

MAP REVISED:  
NOVEMBER 5, 1997



Federal Emergency Management Agency