



P.O. Box 13231, 1700 N. Congress Ave.  
Austin, TX 78711-3231, [www.twdb.texas.gov](http://www.twdb.texas.gov)  
Phone (512) 463-7847, Fax (512) 475-2053

## DETERMINATION OF NO EFFECT

### TO ALL POTENTIALLY INTERESTED AGENCIES:

Pursuant to the environmental assessment requirements of 31 Texas Administrative Code (TAC) § 363.14, the Texas Water Development Board (TWDB) has determined that proposed action identified below may be exempted from full environmental review requirements:

City of Benjamin, Knox County, Texas  
TWDB RWFAP Project No. 21866  
Automated Meter Reading System and Water Service Line Replacement  
Total Financing Amount: \$400,000  
Grant No. G1002048

The City of Benjamin (City) is proposing to use \$400,000 in financing from the Rural Water Assistance Fund (RWFAP) to replace approximately 1,500 linear feet (LF) of waterlines; install two fire hydrants associated with those waterlines; replace approximately 199 water meters; and replace approximately 300 linear feet of public water service lines that may be in need of repair, as identified in the field when water meters are replaced.

All construction will occur within existing roadway right-of-way (ROW) and utility easements on or near private property and will not require the removal of vegetation or stream crossings. If ground disturbance is required for meter replacement, the maximum impact would be a two-foot by two-foot area at each meter.

The TWDB cannot fund testing, remediation, removal, disposal, or related works for contaminated or potentially contaminated materials. However, the project proponent should ensure that, if found, such materials are tested, removed, and disposed of in accordance with applicable state and federal laws.

There are no previously recorded significant or potentially significant historic or cultural sites within or adjacent to the project footprint, according to the Texas Historical Commission's Archeological Sites Atlas, nor is the project within the protected area surrounding a historic cemetery, structure, or district. The project will not adversely impact waters of the United States, including wetlands. Some project components may be located within a 100-year floodplain, as designated by the Federal Emergency Management Agency (FEMA). Projects involving ground disturbance in the 100-year floodplain, including replacement or borings, require a floodplain development permit prior to construction if the community in which construction will occur participates in the National Flood Insurance Program (NFIP) or if federal funding is used for construction. However, the City of Benjamin and Knox County do not participate in the NFIP. Because this project does not utilize federal funds and the communities in which construction occur do not participate in the NFIP, a floodplain permit will not be

#### Our Mission

Leading the state's efforts  
in ensuring a secure  
water future for Texas

#### Board Members

L'Oreal Stepney, P.E., Chairwoman | W. Brady Franks, Board Member | Ashley Morgan, Board Member  
Bryan McMath, Executive Administrator

required. Construction within the existing ROW and easements is not expected to impact threatened or endangered species or habitat.

The decision to grant a Determination of No Effect (DNE) is allowed because the specified project elements should not cause significant adverse impacts to the quality of the environment. Documentation supporting this determination is on file at the TWDB.

This determination shall be revoked if it is found that

- (1) the project no longer meets the requirements for categorical exclusion from full environmental review as a result of changes in the project;
- (2) the project involves extraordinary circumstances as described in 31 TAC § 363.14; or
- (3) the project may violate or has violated federal, state, local, or tribal laws.

The proposed project must comply with the following special and standard environmental conditions:

#### Special Environmental Conditions

- If a service line replacement is identified that requires vegetation removal, the City of Benjamin (City) will notify the Texas Water Development Board (TWDB) prior to vegetation removal or ground disturbance at that site for further environmental assessment.

#### Standard Environmental Conditions

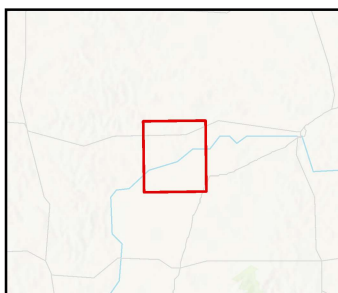
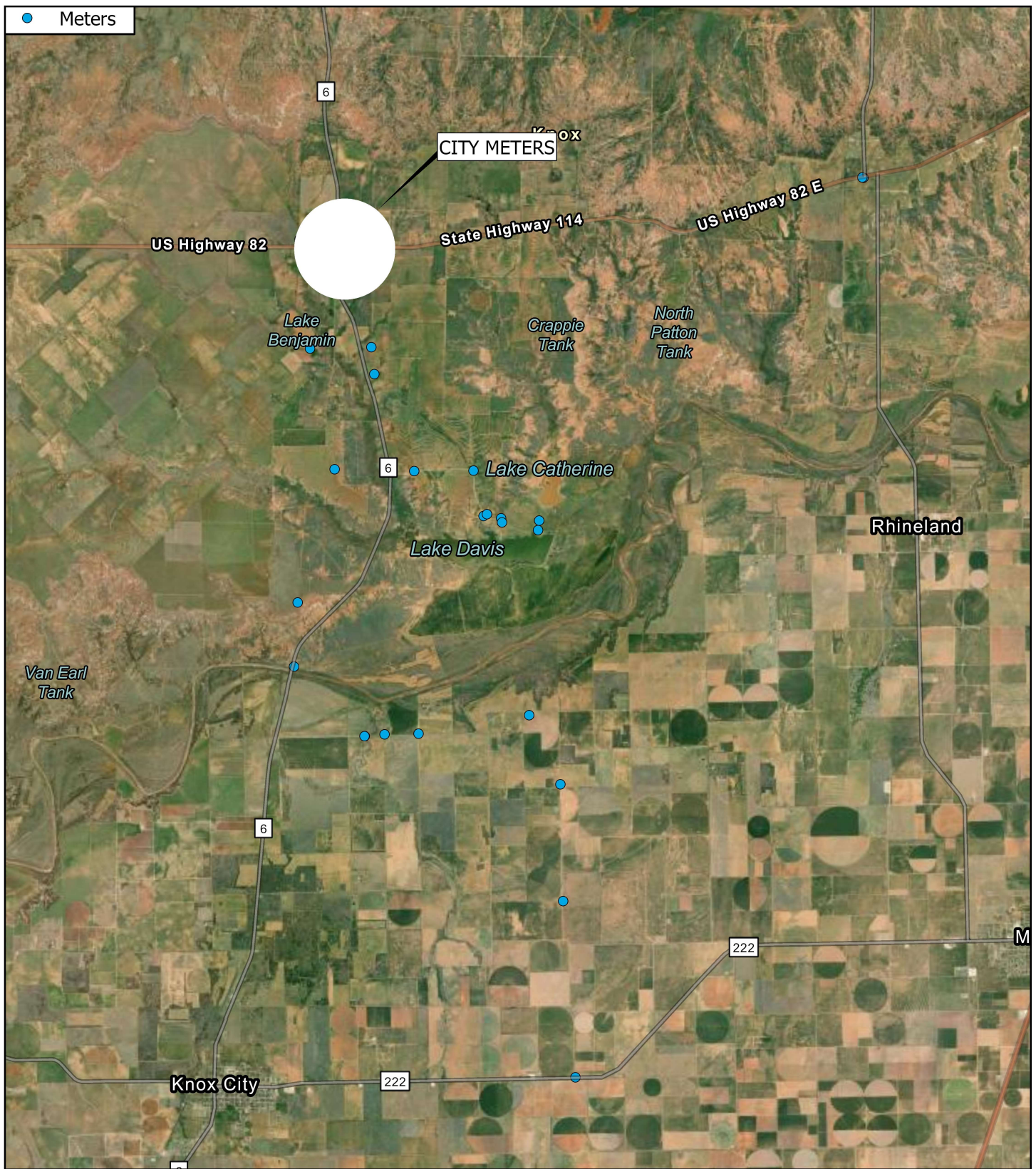
- Consistent with the TWDB Supplemental Construction Contract Conditions (TWDB-0552), the City will abide by the standard emergency condition for the discovery of cultural resources.
- Consistent with the TWDB Supplemental Construction Contract Conditions (TWDB-0552), the City will abide by the standard emergency condition for the discovery of threatened and endangered species.

Comments regarding this determination may be submitted to the Director of Regional Water Project Development, Texas Water Development Board, P.O. Box 13231, Austin, Texas 78711-3231 or via email at [RWPD-Environmental@twdb.texas.gov](mailto:RWPD-Environmental@twdb.texas.gov).

Sincerely,

T. Clay Schultz, Ph.D., Director  
Regional Water Project Development

Enclosures

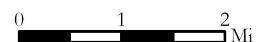


**City of Benjamin**  
**2024 TWDB RWF Application**  
**Rural Meters - Project Map**

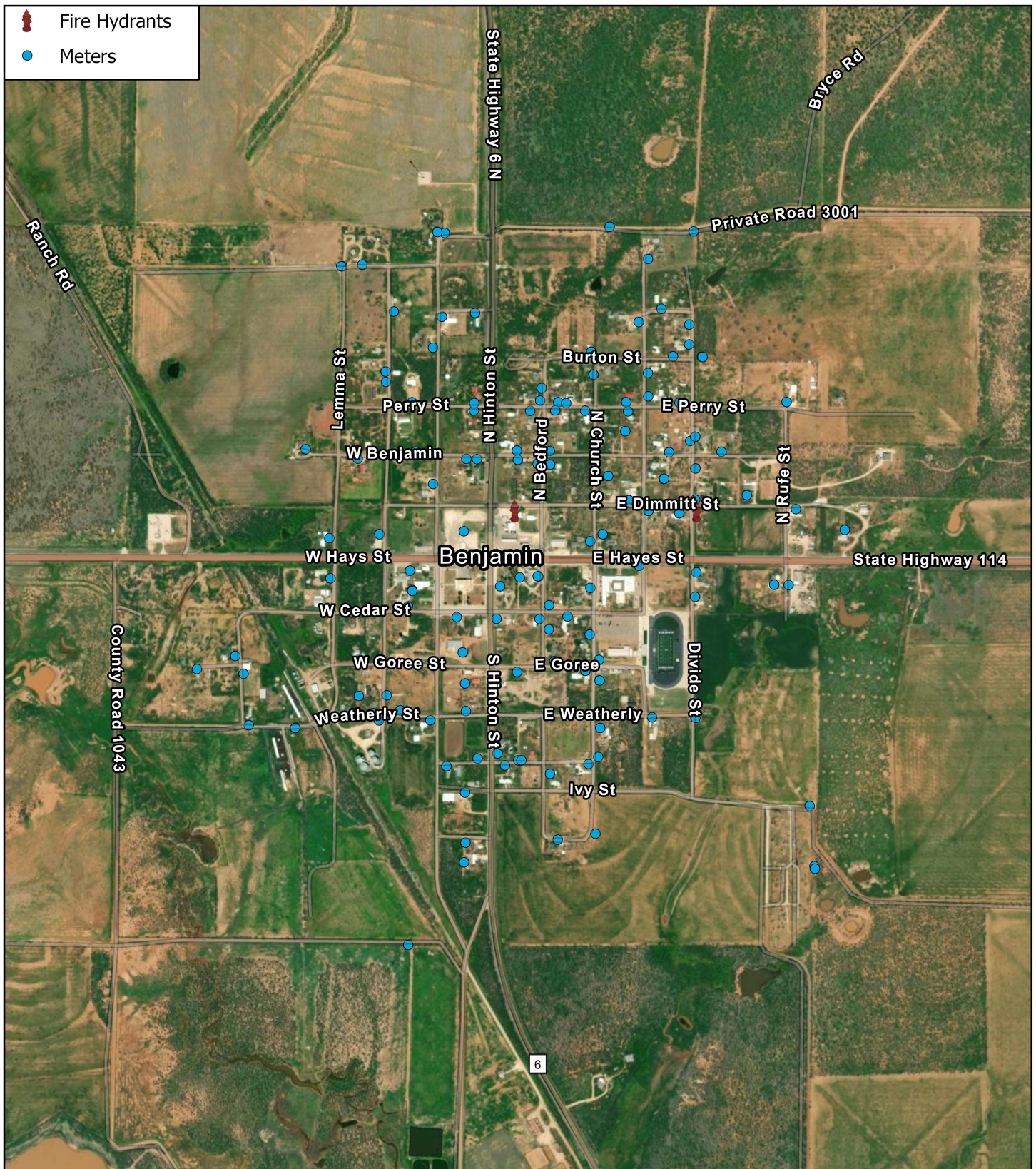


Texas Parks & Wildlife, Esri, TomTom, Garmin, SafeGraph, GeoTechnologies, Inc, METI/NASA, USGS, EPA, NPS, USDA, USFWS, Earthstar Geographics, Esri, USGS, Texas Parks & Wildlife, Esri, TomTom, Garmin, FAO, NOAA, USGS, EPA, NPS, USFWS

**2025**



Coordinate System: NAD 1983 StatePlane Texas North Central FIPS 4202 Feet

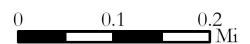


**City of Benjamin**  
**2024 TWDB RWF Application**  
**City Meters - Project Map**

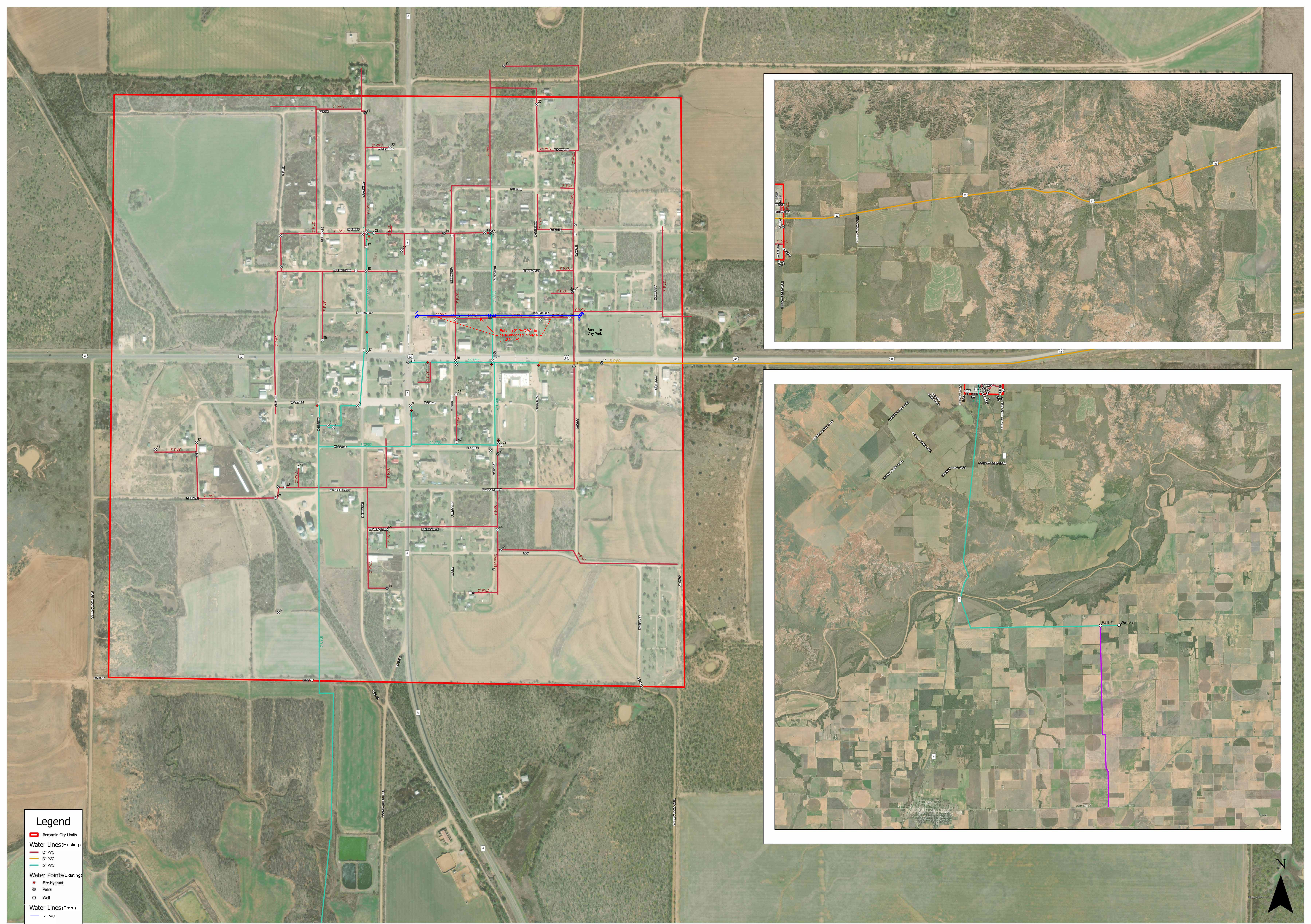


Esri Community Maps Contributors, Texas Parks & Wildlife, Esri, TomTom, Garmin, SafeGraph, GeoTechnologies, Inc, METI/NASA, USGS, EPA, NPS, US Census Bureau, USDA, USFWS, Esri, CGIAR, USGS, Texas Parks & Wildlife, Esri, TomTom, Garmin, SafeGraph, FAO, METI/NASA, USGS, EPA, NPS, USFWS, Maxar

**2025**



Coordinate System: NAD 1983 StatePlane Texas North Central FIPS 4202 Feet



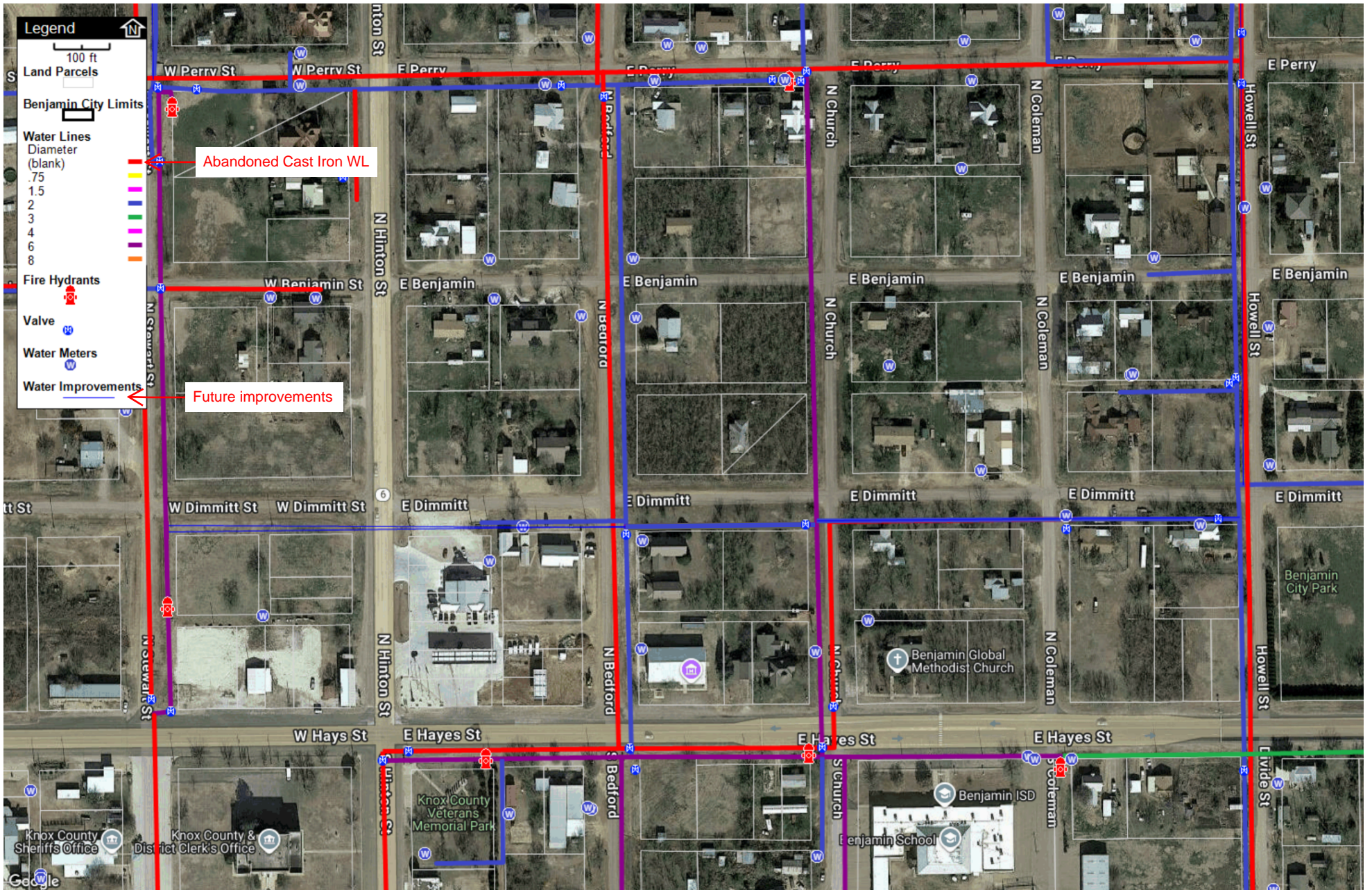
**Legend**

- ▬ Benjamin City Limits
- Water Lines (Existing)**
- ▬ 2" PVC
- ▬ 3" PVC
- ▬ 6" PVC
- Water Points (Existing)**
- ⊕ Fire Hydrant
- ⊗ Valve
- Well
- Water Lines (Prop.)**
- ▬ 6" PVC
- Water Points (Prop.)**
- ⊕ Fire Hydrant
- ⊗ Valve



1 inch = 250 feet





**Legend**

100 ft

Land Parcels

Benjamin City Limits

Water Lines

Diameter

(blank)

.75

1.5

2

3

4

6

8

Fire Hydrants

Valve

Water Meters

Water Improvements

Abandoned Cast Iron WL

Future improvements

Knox County Sheriff's Office

Knox County & District Clerk's Office

Knox County Veterans Memorial Park

Benjamin School

Benjamin ISD

Benjamin Global Methodist Church

Benjamin City Park

Google

# City of Benjamin

TWDB - RWF

