



P.O. Box 13231, 1700 N. Congress Ave.
Austin, TX 78711-3231, www.twdb.texas.gov
Phone (512) 463-7847, Fax (512) 475-2053

CATEGORICAL EXCLUSION

TO ALL INTERESTED AGENCIES AND PUBLIC GROUPS:

Pursuant to the environmental assessment requirements of 31 Texas Administrative Code (TAC) § 363.14, the Texas Water Development Board (TWDB) has determined that proposed action identified below may be exempted from a comprehensive environmental review:

Chatt Water Supply Corporation, Hill County, Texas
TWDB RWAFF Project No. 21854
Water Meter Replacement Project
Total Financing Amount: \$521,475
Grant No. G1002070

The Chatt Water Supply Corporation (Corporation) is proposing to use \$521,475 in financing from the Rural Water Assistance Fund program to complete its Water Meter Replacement project. The project will entail replacement of the following existing system components with new equipment as needed in the same or proximate locations: 1) approximately 363 water meters (all to be replaced); 2) deteriorated pipe fittings within meter boxes; and 3) meter boxes.

The existing water meters are housed in meter boxes with associated pipe fittings. All of the meter boxes are located within existing utility/service access easements on private property. This metering network was established in 1968 and many of the meters date from that period. Because of site changes in the interim, some of the existing meter boxes are no longer easily accessible and will be relocated to more convenient positions along the existing water service pipelines on the same properties, but at a higher elevation if necessary to reduce the risk of water damage. Most of the meters will be replaced at their existing locations on these properties.

The TWDB cannot fund testing, remediation, removal, disposal, or related works for contaminated or potentially contaminated materials. However, the project proponent should ensure that, if found, such materials are tested, removed, and disposed of in accordance with applicable state and federal laws.

There are no previously recorded significant or potentially significant historic or cultural resource sites within or adjacent to the proposed meter installations, according to the Texas Historical Commission's Archeological Sites Atlas, nor is the project within the protected area surrounding a historic cemetery, structure, or district. The project will not adversely impact waters of the United States, including wetlands, and is not likely to affect threatened or endangered species. No vegetation clearing is anticipated except incidental pruning to accommodate new meter boxes if necessary.

Our Mission

Leading the state's efforts
in ensuring a secure
water future for Texas

Board Members

L'Oreal Stepney, P.E., Chairwoman | W. Brady Franks, Board Member | Ashley Morgan, Board Member
Bryan McMath, Executive Administrator

Chatt is an unincorporated rural community in central Hill County south of the city of Hillsboro and primarily east and south of Aquilla Lake. The County is a participant in the National Flood Insurance Program and construction activities within Special Flood Hazard Areas (100-year floodplains) must comply with local floodplain ordinances and regulations administered by the Federal Emergency Management Agency (FEMA). Three of the meter locations are within floodplains mapped by FEMA. The Corporation's engineering consultant coordinated with the local floodplain administrator regarding the potential need for a floodplain development permit for the activities associated with meter replacement at the localities at issue. On March 31, 2026, the administrator determined that "No permits are required to replace or move meters."

The decision to grant a Determination of No Effect (DNE) is allowed because the specified project elements should not cause significant adverse impacts to the quality of the environment. Documentation supporting this determination is on file at the TWDB.

This determination shall be revoked if it is found that

- (1) the project no longer meets the requirements for categorical exclusion from full environmental review as a result of changes in the project;
- (2) the project involves extraordinary circumstances as described in 31 TAC § 363.14; or
- (3) the project may violate or has violated federal, state, local, or tribal laws.

The proposed project must comply with the following standard environmental conditions:

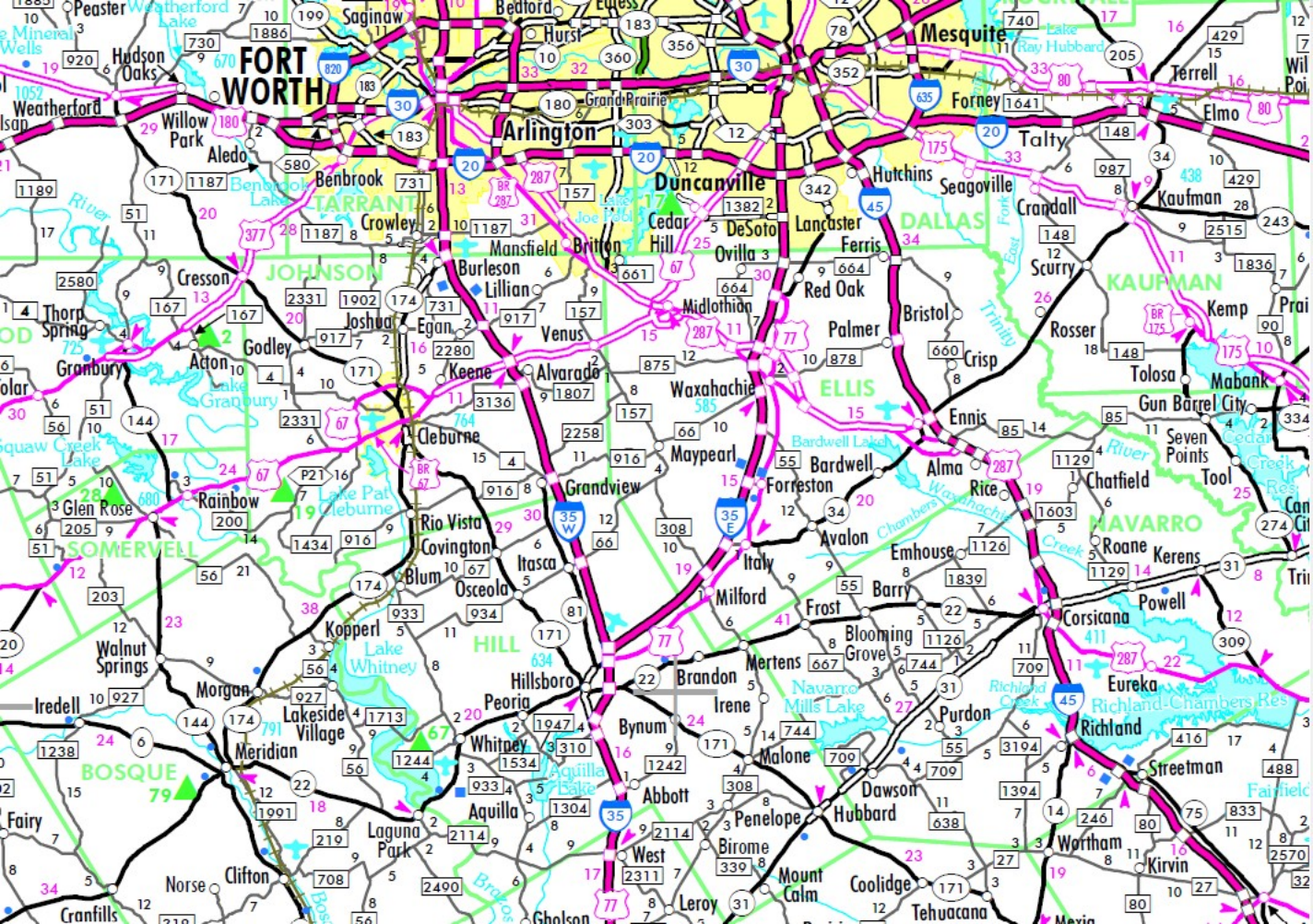
- Consistent with the TWDB Supplemental Construction Contract Conditions (TWDB-0552), the Chatt Water Supply Corporation will abide by the standard emergency condition for the discovery of cultural resources.
- Consistent with the TWDB Supplemental Construction Contract Conditions (TWDB-0552), the Chatt Water Supply Corporation will abide by the standard emergency condition for the discovery of threatened and endangered species.

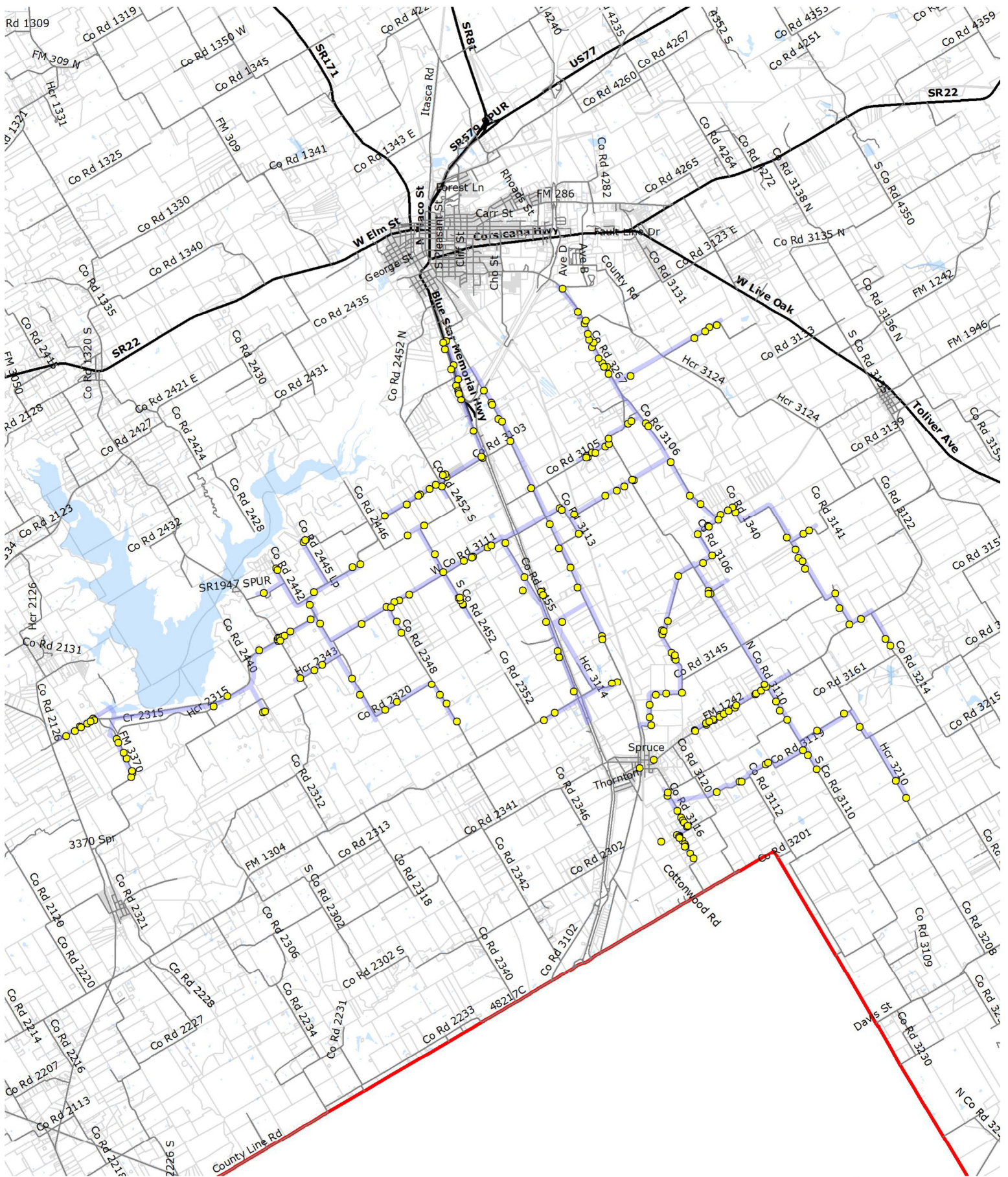
Comments regarding this determination may be submitted to the Director of Regional Water Project Development, Texas Water Development Board, P.O. Box 13231, Austin, Texas 78711-3231 or via email at RWPD-Environmental@twdb.texas.gov.

Sincerely,

T. Clay Schultz, Ph.D., Director
Regional Water Project Development

Enclosures





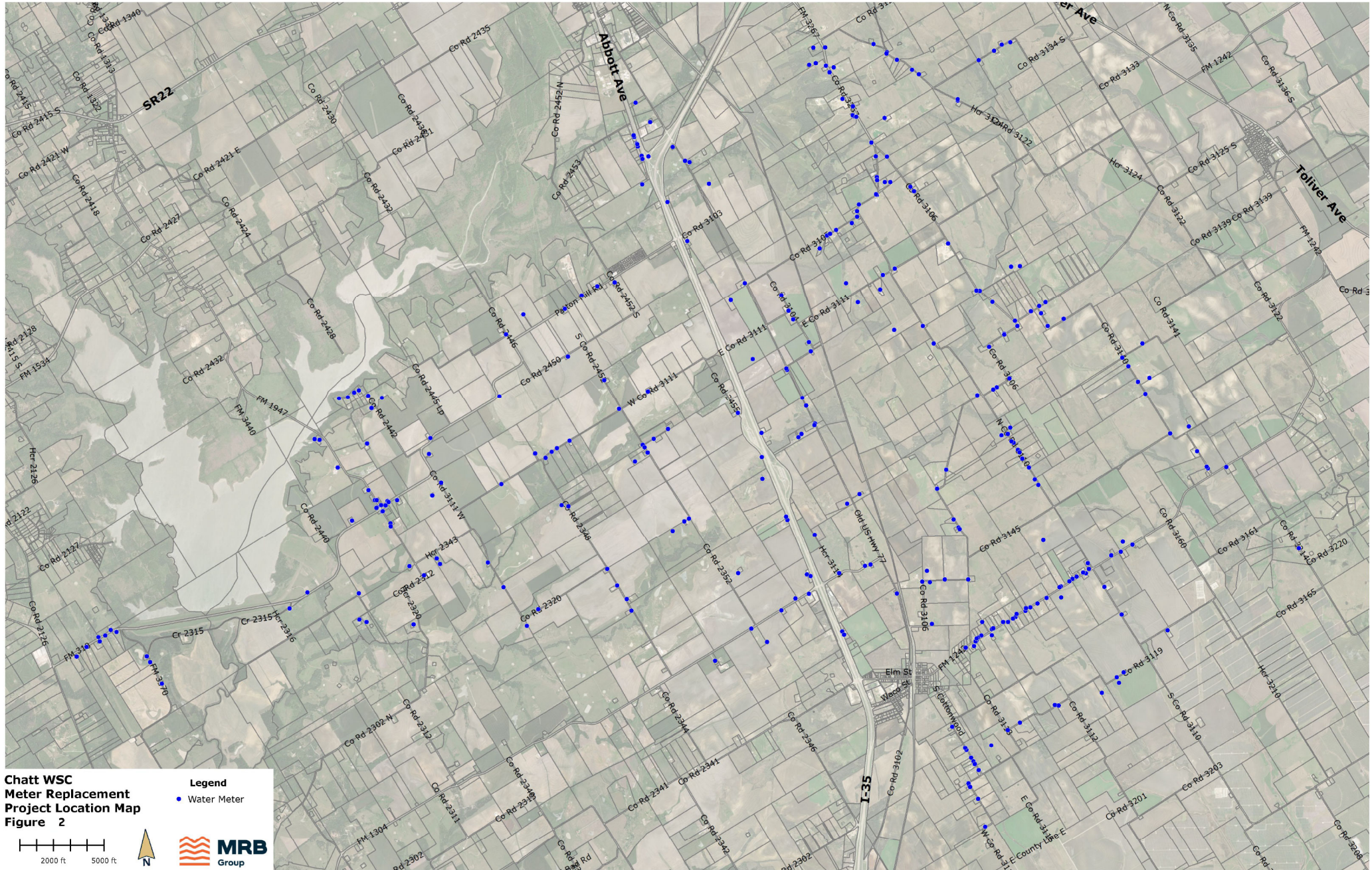
Legend

- Chatt WSC CCN (Facilities +200ft)
- County Boundary
- Customer Connections (363)



**Chatt WSC
Customer Connections Map
Hill County Texas**

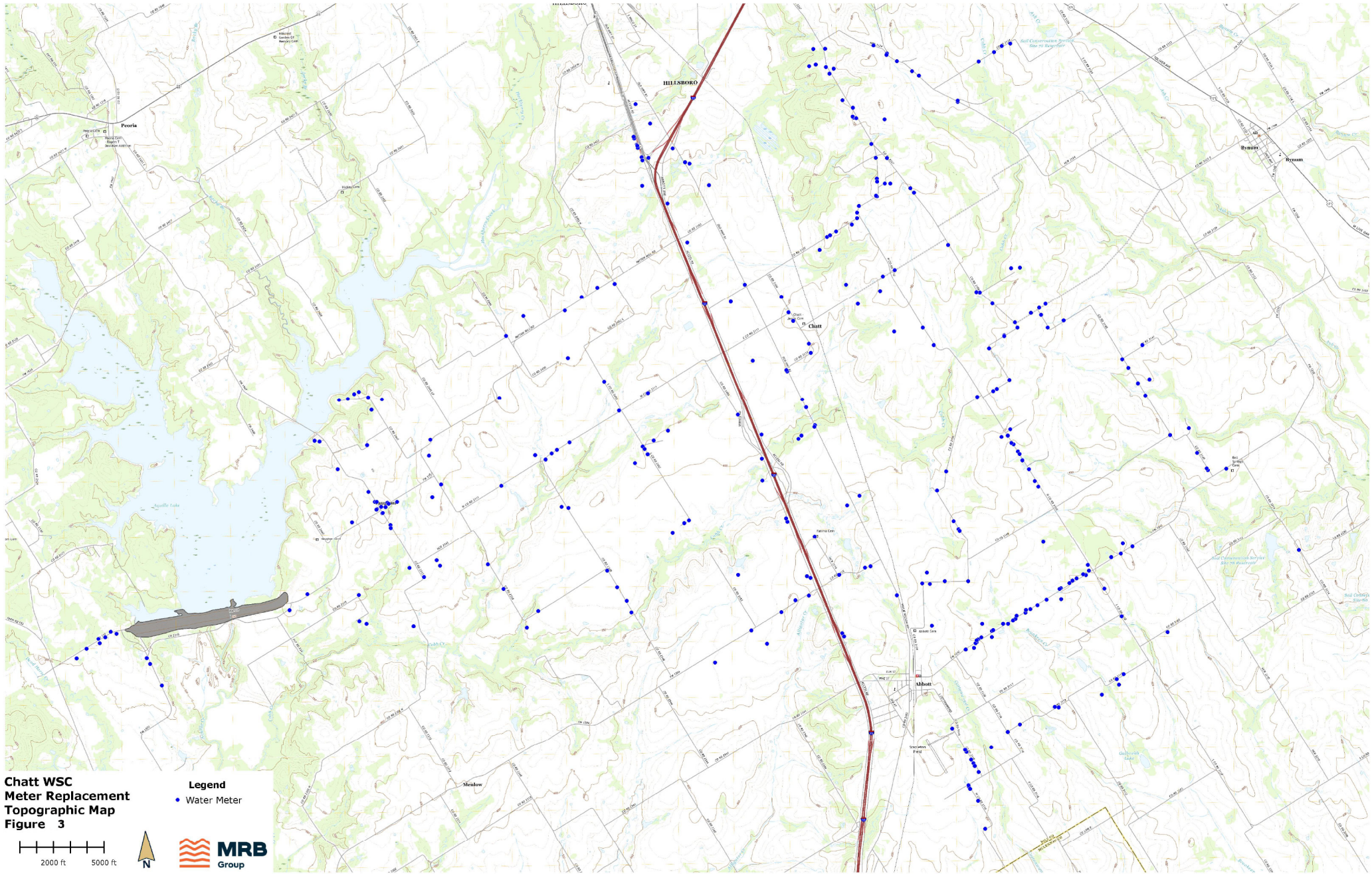




Chatt WSC
Meter Replacement
Project Location Map
Figure 2

Legend
• Water Meter





**Chatt WSC
Meter Replacement
Topographic Map
Figure 3**

Legend
• Water Meter

