



P.O. Box 13231, 1700 N. Congress Ave.  
Austin, TX 78711-3231, [www.twdb.texas.gov](http://www.twdb.texas.gov)  
Phone (512) 463-7847, Fax (512) 475-2053

## ENVIRONMENTAL DETERMINATION

**TO:** File

**FROM:** T. Clay Schultz, Ph.D., Director, Regional Water Project Development

**SUBJECT:** Chappell Hill Water Supply Corporation, Washington County, Texas  
TWDB RWAF Project No. 21839  
Water System Capital Improvements Projects  
Total Commitment Amount: \$4,056,503  
Commitment No. G1001971

The environmental review for the Chappell Hill Water Supply Corporation's (Corporation) proposed Water System Capital Improvements project has been completed consistent with 31 Texas Administrative Code (TAC) § 363.14. The Corporation is proposing to use \$4,056,503 in funding from the Rural Water Assistance Fund Program to install a new standpipe water storage tank, install a backup generator, and replace water mains. The Texas Water Development Board (TWDB) committed this funding on February 13, 2025. The Corporation closed the funding on May 16, 2025.

This environmental review is documented by the enclosed Environmental Determination, which contains mitigative environmental conditions that will be applied to the project to avoid significant adverse impact on waters of the U.S., floodplains, cultural or historical resources, threatened or endangered species, and protected migratory bird species.

Based on a detailed environmental review of the planning information, the Environmental Data Form received by the TWDB on October 24, 2025, with the supplementary materials submitted to the TWDB on October 31, 2025, the proposed project meets the requirements of 31 TAC § 363.14 with the following special and standard environmental conditions:

### Special Environmental Conditions

- In accordance with an agreement with the Texas Parks and Wildlife Department, Ecological and Environmental Planning Program (TWDB Project No. 56389), to ensure compliance with 31 Texas Administrative Code Chapter 57; Texas Parks and Wildlife Code, Chapters 1, 12, 64, 67, and 68; the Endangered Species Act of 1973, as amended; the Migratory Bird Treaty Act; and applicable federal regulations pertaining to protected and invasive species, the following measures will be implemented:

- In areas where clearing or trimming woody vegetation is necessary to install the new pipelines or create access for machinery or heavy equipment, the vegetation clearing activities or disturbance should be scheduled to occur outside of the March 15 to September 15 migratory bird nesting season, if possible. Contractors should be made aware of the potential of encountering nesting birds (either nesting or wintering) in the project area and be instructed to avoid negatively impacting them. If vegetation clearing (including groundcover and grasses) must be scheduled to occur during the nesting season, the vegetation to be impacted should be surveyed for active nests, including those of ground nesting species, by a qualified biologist in order to fully minimize any potential impacts to nesting birds. If active nests are observed during surveys, it is recommended that a 150-foot buffer of vegetation remain around the nests until the young have fledged or the nest is abandoned.
  - The width of clearing of native vegetation and trees should be minimized to the extent practicable. All disturbed areas should be re-seeded with native vegetation. Recommendations for seed suitable for local use may be obtained from the U.S. Department of Agriculture Natural Resource Conservation Service or the Lady Bird Johnson Wildflower Center.
  - Pipeline trenches should be closed at the end of each day if practicable. If not, the trenches should be inspected for the presence of state-listed protected reptiles and other wildlife species that have been trapped, and prior to the re-initiation of construction, a qualified biologist should relocate any such species.
- Consistent with the Flood Insurance Reform Act of 2004, federal Executive Order 11988 as amended by EO 13690, Texas Water Code Section 16.315, and local floodplain development ordinances, a floodplain development permit will be obtained from the local floodplain administrator prior to construction in, across, or under a Special Flood Hazard Area, and any requirements contained therein will be adhered to.
  - To avoid potential impacts to waters of the U.S., including Felchak Branch and the unnamed tributary of Cedar Creek on Chestnut Street, waterline crossings of waterbodies will be performed by a trenchless method.

#### Standard Environmental Conditions

- Consistent with the Texas Water Development Board Supplemental Construction Contract Conditions (TWDB-0552), the Chappell Hill Water Supply Corporation will abide by the standard emergency condition for the discovery of cultural resources.
- Consistent with the Texas Water Development Board Supplemental Construction Contract Conditions (TWDB-0552), the Chappell Hill Water Supply Corporation will abide by the standard emergency condition for the discovery of threatened and endangered species.

Environmental Determination  
Chappell Hill Water Supply Corporation, Washington County, Texas  
TWDB RWAF Project No. 21839  
Water System Capital Improvements Projects  
Page 3

With the addition of these requirements, design funds may be released once all other requirements are satisfied.

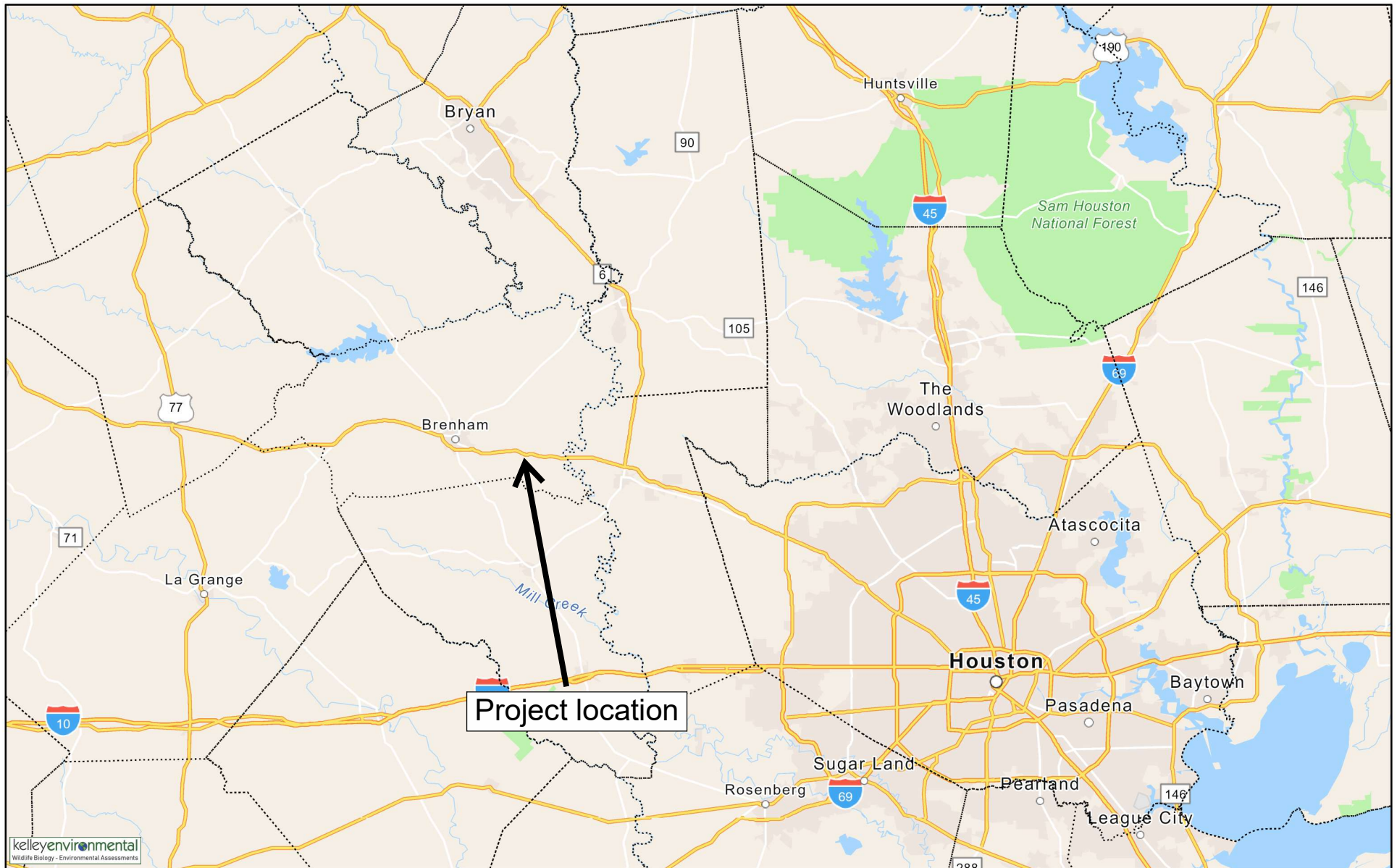
Enclosures

# Chappell Hill Water Supply Corporation 2025 Water System Improvements



Project location

# Chappell Hill Water Supply Corporation 2025 Water System Improvements

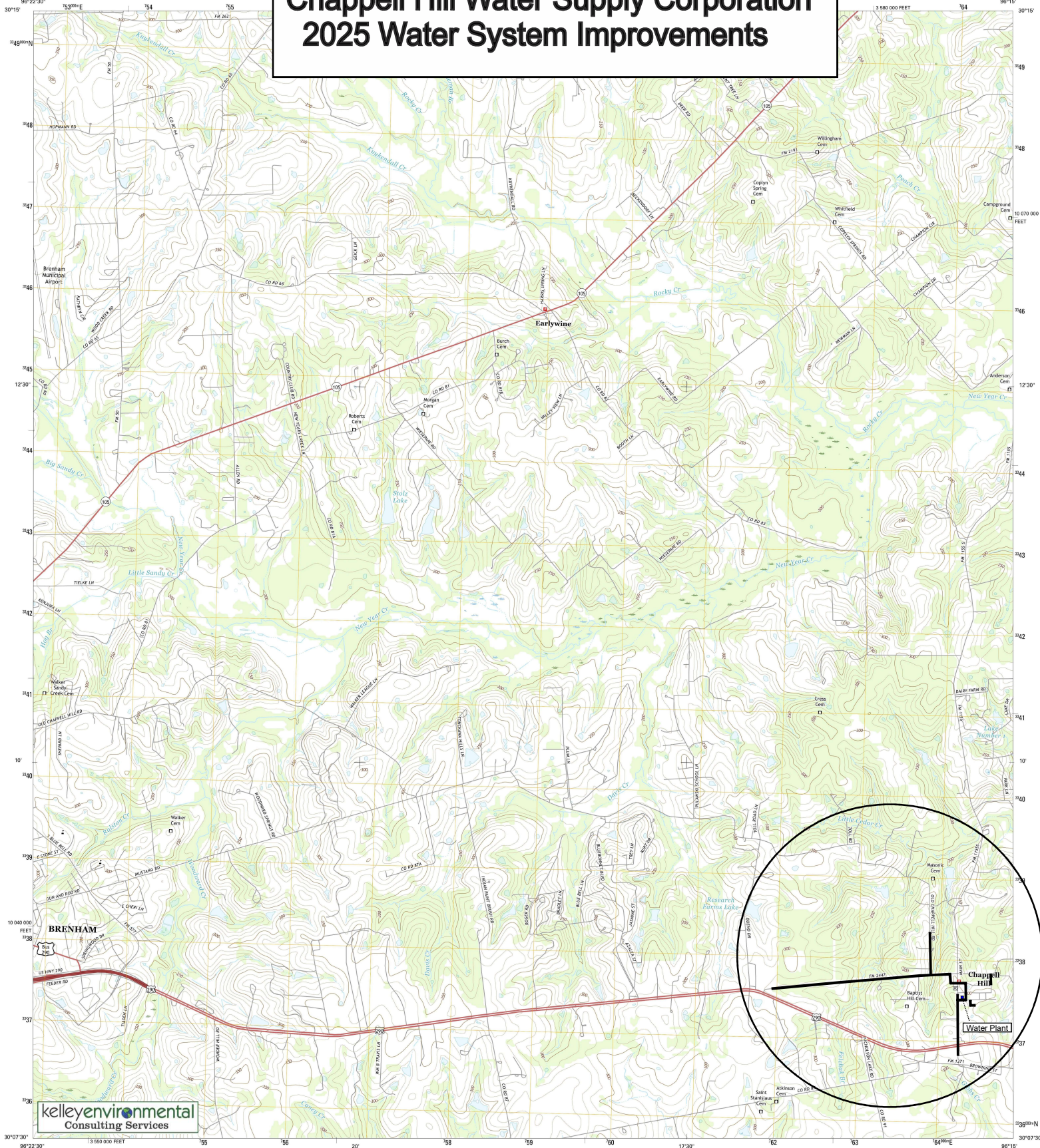




U.S. DEPARTMENT OF THE INTERIOR  
U.S. GEOLOGICAL SURVEY

# Chappell Hill Water Supply Corporation 2025 Water System Improvements

CHAPPELL HILL QUADRANGLE  
TEXAS-WASHINGTON CO.  
7.5-MINUTE SERIES

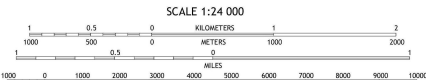
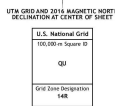


Produced by the United States Geological Survey

North American Datum of 1983 (NAD83)  
World Geodetic System of 1984 (WGS84), Projection and  
1 000-meter grid: Universal Transverse Mercator, Zone 14R  
10 000-foot scale: Texas Coordinate System of 1983 (central  
zone)

This map is not a legal document. Boundaries may be  
generalized for this map scale. Private lands within government  
reservations may not be shown. Obtain permission before  
entering private lands.

Imagery.....NAP, October 2014  
Roads.....U.S. Census Bureau, 2014  
Names.....U.S. Census Bureau, 2014  
Hydrography.....National Hydrography Dataset, 2015  
Contours.....National Elevation Dataset, 2004  
Boundaries.....Multiple sources; see metadata file 1972 - 2015  
Wetlands.....FWS National Wetlands Inventory 1977 - 2014



CONTOUR INTERVAL 10 FEET  
NORTH AMERICAN VERTICAL DATUM OF 1988  
This map was produced to conform with the  
National Geospatial Program US Topo Product Standard, 2011.  
A metadata file associated with this product is draft version 3.6.19



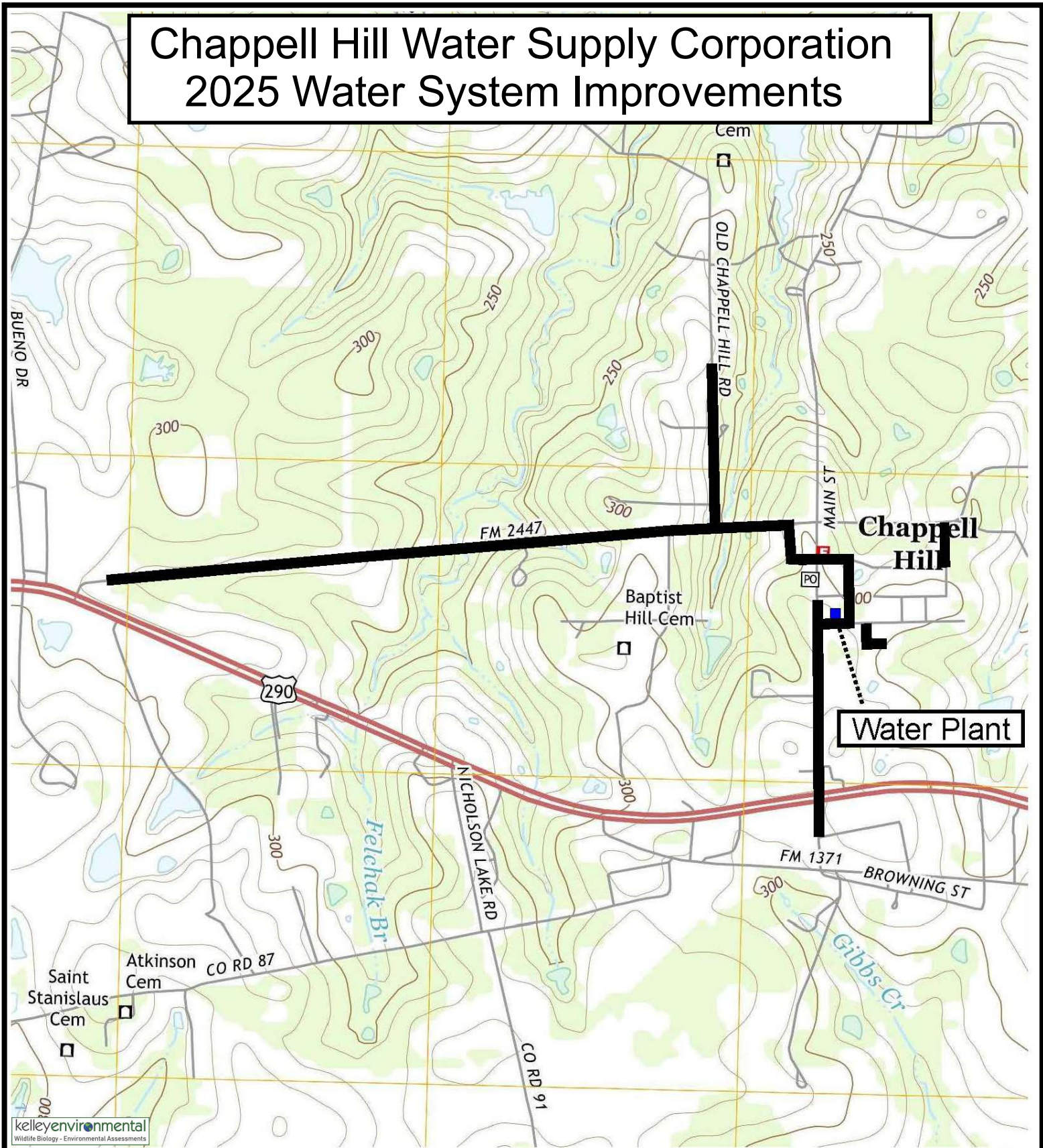
QUADRANGLE LOCATION

1	2	3	1 Gay Hill
4	5	6	2 Independence
7	8	9	3 Brenham
10	11	12	4 Danahy
13	14	15	5 Welcome
16	17	18	6 Kenney
19	20	21	7 Buckhorn

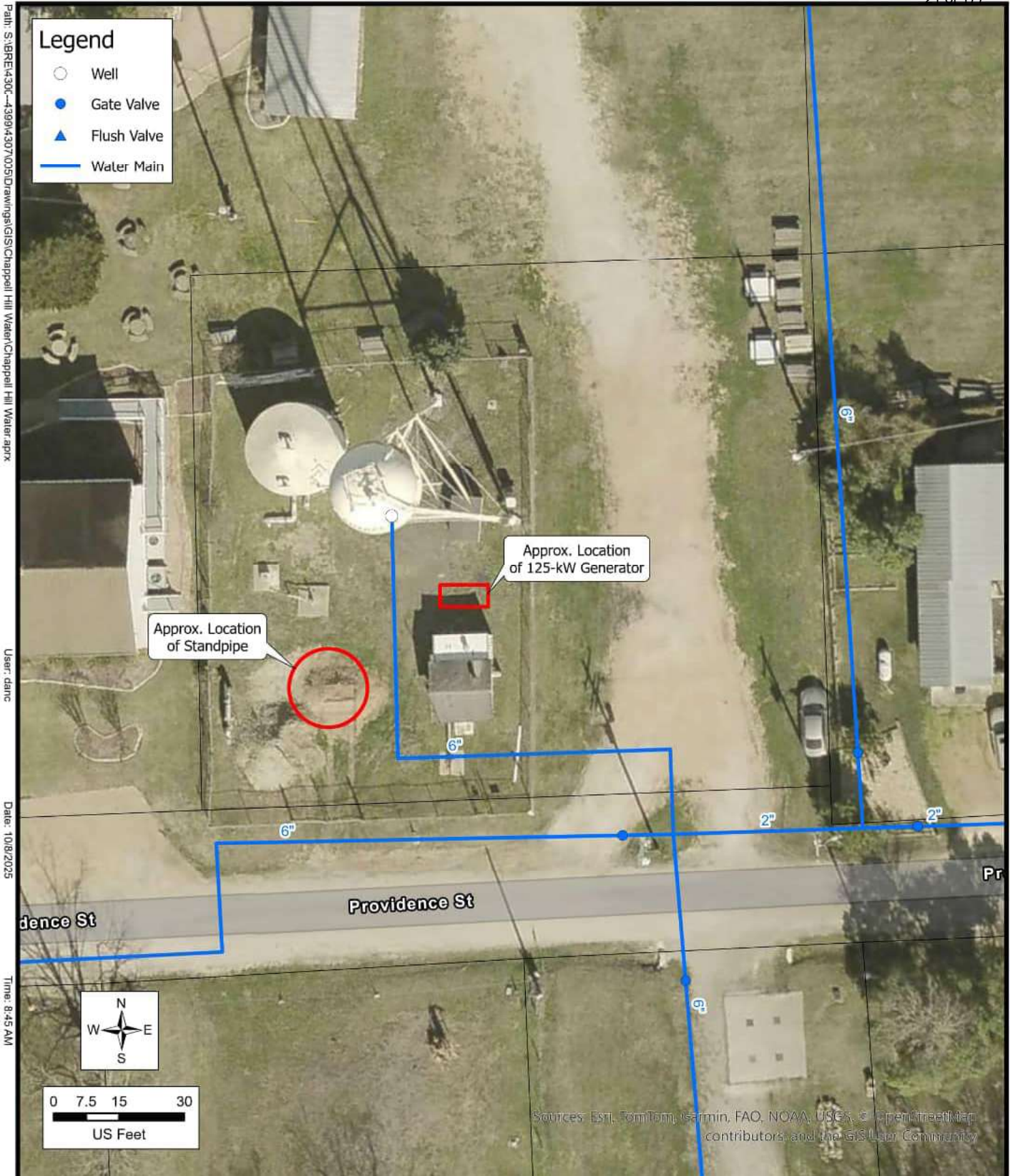
ROAD CLASSIFICATION	
Expressway	Local Connector
Secondary Hwy	Local Road
Route	State Route
Interstate Route	US Route
	State Route

CHAPPELL HILL, TX  
2016

# Chappell Hill Water Supply Corporation 2025 Water System Improvements



Source: USGS Washington Co, Tx  
7.5 minute quadrangle



## WATER PLANT SITE IMPROVEMENTS

**TWDB WATER SYSTEM IMPROVEMENTS  
CHAPPELL HILL  
WASHINGTON COUNTY, TEXAS**



**FIGURE 1  
4307.005**

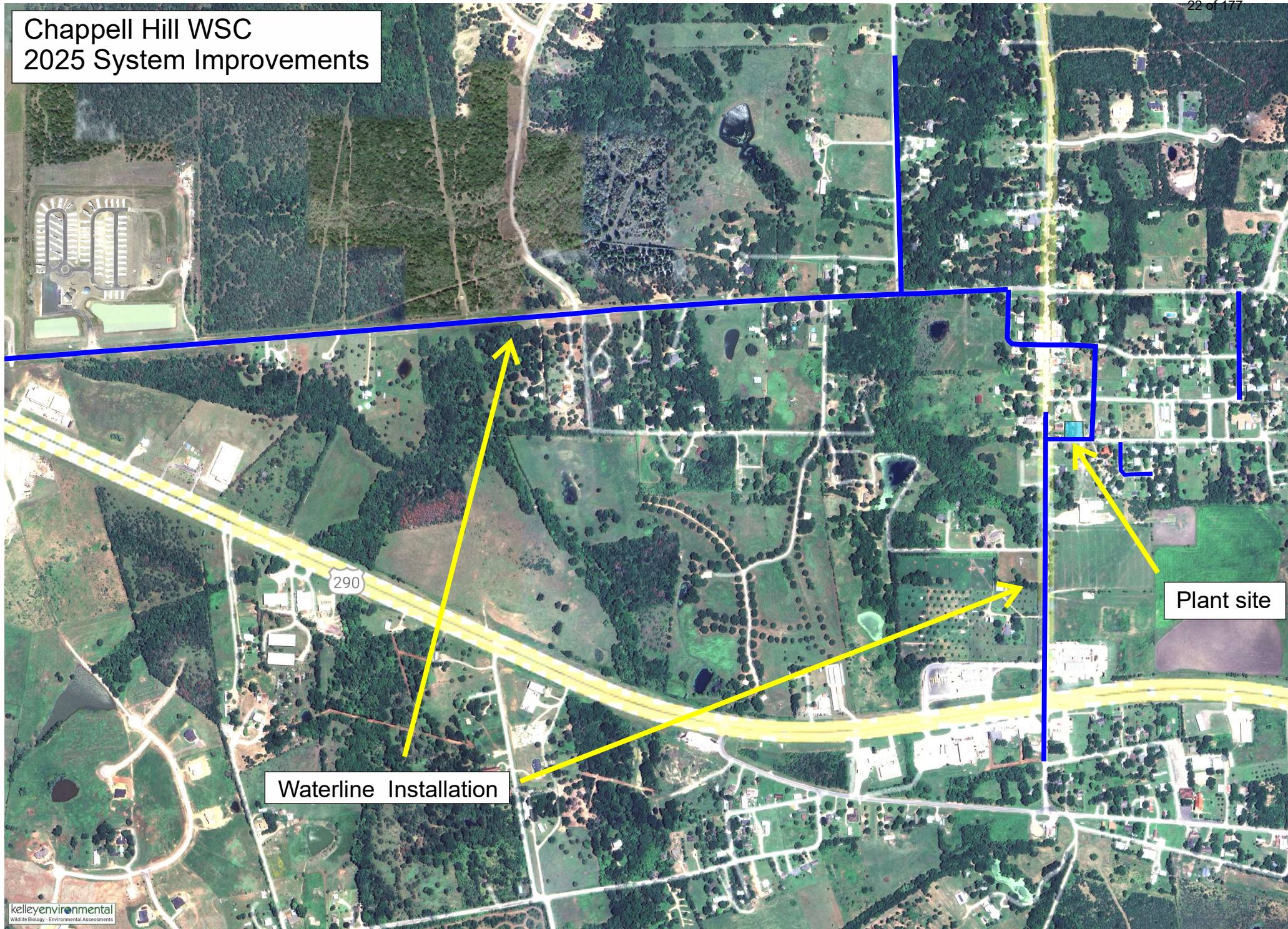
Path: S:\BREA300-4309\4307\03\Drawings\GIS\Chappell Hill Water\Chappell Hill Water.aprx

User: danc

Date: 10/8/2025

Time: 8:45 AM

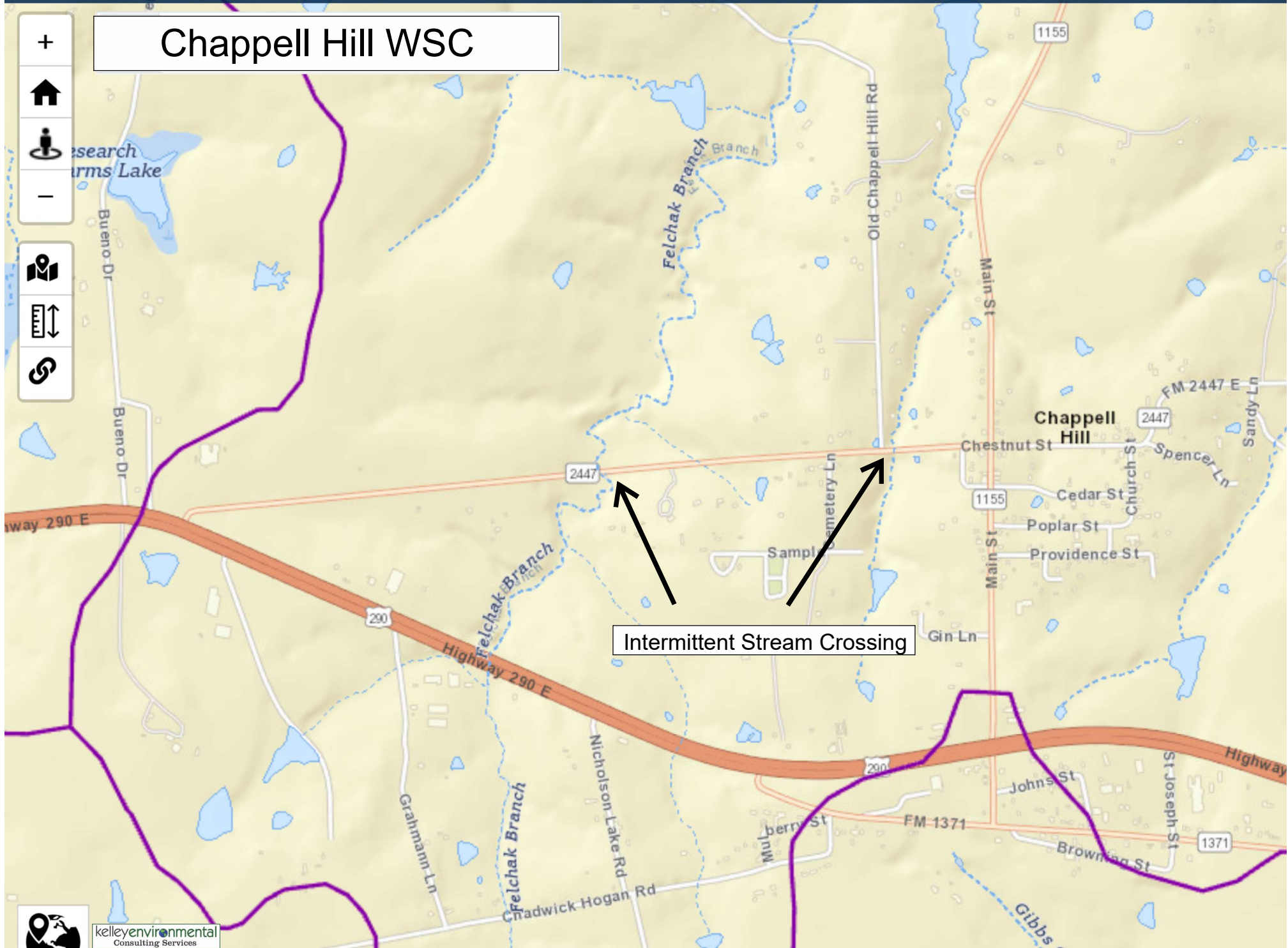
# Chappell Hill WSC 2025 System Improvements



Waterline Installation

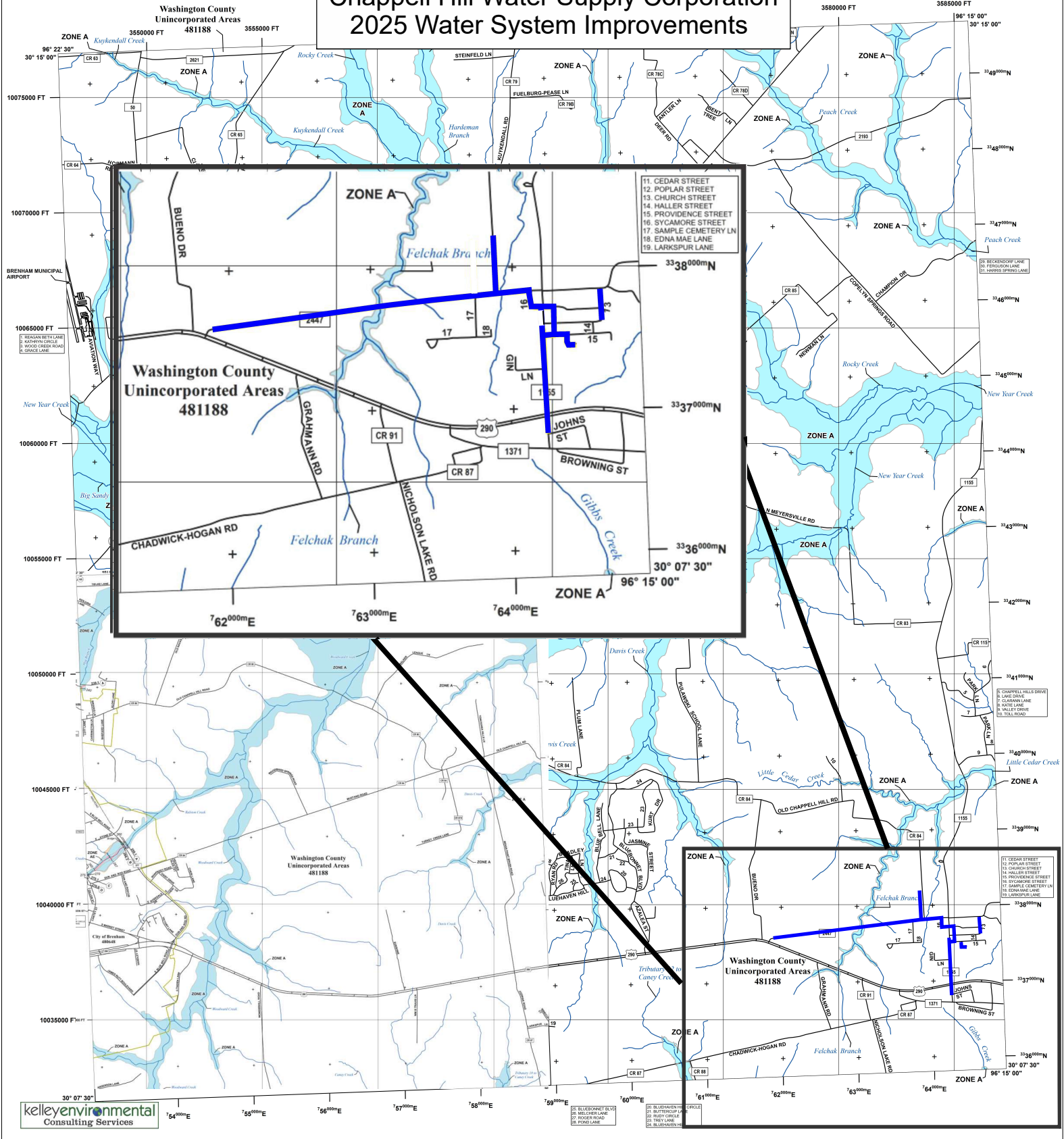
Plant site

## Chappell Hill WSC



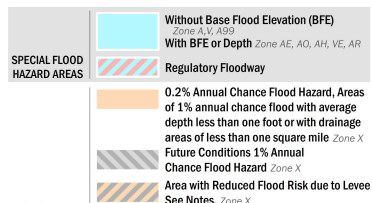
# Chappell Hill Water Supply Corporation 2025 Water System Improvements

24 of 177



## FLOOD HAZARD INFORMATION

SEE FIRM REPORT FOR DETAILED LEGEND AND INDEX MAP FOR FIRM PANEL LAYOUT  
THE INFORMATION DEPICTED ON THIS MAP AND SUPPORTING  
DOCUMENTATION ARE ALSO AVAILABLE IN DIGITAL FORMAT AT  
[HTTPS://MSC.FEMA.GOV](https://msc.fema.gov)



## NOTES TO USERS

For information and questions about this Flood Insurance Rate Map (FIRM), available products associated with this FIRM, including historic versions, the current map date for each FIRM panel, how to order products, or the National Flood Insurance Program (NFIP) in general, please call the FEMA Map Information eXchange at 1-877-FEMA-MAP (1-877-368-2671) or visit the FEMA Flood Map Service Center website at <https://msc.fema.gov>. Available products may include previously issued Letters of Map Change, a Flood Insurance Study Report, and/or digital versions of this map. Many of these products can be ordered or obtained directly from the website.

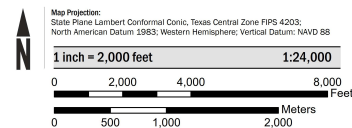
Communities annexing land on adjacent FIRM panels must obtain a current copy of the adjacent panel as well as the current FIRM index. These may be ordered directly from the Map Service Center at the number listed above.

For community and countywide map dates refer to the Flood Insurance Study report for this jurisdiction.

To determine if flood insurance is available in the community, contact your insurance agent or call the National Flood Insurance Program at 1-800-436-6000.

Base map information shown on this FIRM was provided in digital format by the Texas Natural Resources Information System (TNRIS). This information was photogrammetrically compiled at a scale of at least 1:24,000 from aerial photography dated 2004. Additional information was provided by the Texas Department of Transportation (TxDOT) GIS datasets for community boundaries and transportation layers dated 2015.

## SCALE



## PANEL LOCATOR



**FEMA**  
FEDERAL EMERGENCY MANAGEMENT AGENCY  
National Flood Insurance Program

NATIONAL FLOOD INSURANCE PROGRAM  
FLOOD INSURANCE RATE MAP

WASHINGTON COUNTY, TEXAS  
and Incorporated Areas

PANEL 325 or 500

Panel Contains:

COMMUNITY	NUMBER	PANEL SUFFIX
WASHINGTON COUNTY	481188	0325 0

