



**Texas Water Development Board**  
**Report 325**

**Test Well Drilling  
Investigation to Delineate the  
Downdip Limits of Usable-  
Quality Ground Water in the  
Edwards Aquifer in the  
Austin Region, Texas**

by

**Robert Flores, Geologist**

**April 1990**

Faint, illegible text at the top of the page, possibly a header or title.



Several lines of faint, illegible text in the middle section of the page.

A few more lines of faint, illegible text near the bottom of the page.

## **Texas Water Development Board**

**G. E. (Sonny) Kretzschmar, Executive Administrator**

### **Texas Water Development Board**

**Walter W. Cardwell, III, Chairman**  
**Noe Fernandez**  
**Thomas M. Dunning**

**Wesley E. Pittman, Vice-Chairman**  
**Glen E. Roney**  
**Charles W., Jenness**

*Authorization for use or reproduction of any original material contained in this publication, i.e., not obtained from other sources, is freely granted. The Board would appreciate acknowledgement.*

**Published and Distributed  
by the  
Texas Water Development Board  
P. O. Box 13231, Capitol Station  
Austin, Texas 78711-3231**

1870

...

...

...

...

...

## ABSTRACT

The Edwards aquifer is the principal source of ground water for the Georgetown and Round Rock areas. In addition, Barton Springs is an important natural feature of the Edwards aquifer that provides a significant recreational facility for Austin area residents. As the need for further water development becomes pressing, it is useful to know in more detail the quantitative aspect of ground-water resources in the Edwards. Only a very limited amount of water-quality data is available to define the eastern downdip boundary of the Edwards aquifer within this area. To better delineate the downdip limits of usable-quality ground water in the Edwards aquifer in the Austin region, a test well drilling investigation was initiated in December, 1985.

The Texas Water Development Board's modified Failing 1500 drill rig, two water trucks, and drilling crew drilled eight test holes in Travis, Williamson, and Bell Counties. Additional well data was gathered on existing water wells.

The field investigation included the following: (a) a total of 6,613 feet was drilled; (b) 2,232 feet was drilled in the Edwards aquifer; (c) 417 feet of the Edwards Limestone was cored with approximately 90 percent core recovery; (d) 938 feet of surface casing and 432 feet of liner pipe was set.

Chemical analyses of formation waters from the test holes and other selected wells indicate that the "bad-water" line, where the aquifer contains water of 3,000 milligrams per liter or more dissolved solids, of the Edwards aquifer is generally further west than indicated by previous information. Additionally, core study and testing, geophysical logging, and hydrogeologic tests indicate the following: (a) where present, the Regional Dense Member of the Person Formation represents a hydrogeologic boundary dividing the aquifer into upper and lower units which contributes to variation in the chemical quality of the aquifer waters; and (b) the porosity of the lower unit is more consistent and uniform than the upper unit.



## TABLE OF CONTENTS

|                                       | Page |
|---------------------------------------|------|
| <b>ABSTRACT</b> .....                 | v    |
| <b>INTRODUCTION</b> .....             | 1    |
| Purpose and Scope .....               | 1    |
| Location and Extent .....             | 1    |
| Previous Investigations .....         | 2    |
| Personnel .....                       | 2    |
| Acknowledgments .....                 | 2    |
| <b>STRATIGRAPHY</b> .....             | 3    |
| <b>HYDROGEOLOGIC FRAMEWORK</b> .....  | 9    |
| <b>METHODS OF INVESTIGATION</b> ..... | 17   |
| Drilling Investigation .....          | 17   |
| Well Site Procedure .....             | 21   |
| Core Testing .....                    | 24   |
| Disposition of Core .....             | 24   |
| Geophysical Logs .....                | 24   |
| <b>RESULTS</b> .....                  | 28   |
| <b>CONCLUSIONS</b> .....              | 33   |
| <b>RECOMMENDATIONS</b> .....          | 35   |
| <b>REFERENCES</b> .....               | 37   |

## TABLES

|   |    |
|---|----|
| 1. Geologic Units and Their Water-Bearing Characteristics ..... | 5  |
| 2. Classification Systems .....                                 | 22 |
| 3. Laboratory Core Analysis of Test Hole 1 (58-50-603) .....    | 25 |
| 4. Laboratory Core Analysis of Test Hole 7 (40-61-705) .....    | 26 |
| 5. Drilling and Coring Statistics .....                         | 29 |

## FIGURES

|   |    |
|---|----|
| 1. Map of the Hydrogeologic Framework .....   | 7  |
| 2. Approximate Altitude of and Depth to Top of the Edwards Aquifer .....  | 11 |
| 3. Approximate Altitude of and Depth to Base of the Edwards Aquifer .....   | 13 |
| 4. Approximate Thickness of the Edwards Aquifer .....   | 15 |
| 5. Sulfate, Chloride, and Dissolved-Solids Content in Water From<br>Selected Wells and Test Holes in the Edwards Aquifer .....        | 19 |
| 6. Comparison of Revised and Previous Delineations of the 1,000 and<br>3,000 mg/l Dissolved Solids Lines in the Edwards Aquifer ..... | 31 |





**Table of Contents (continued)**

**APPENDICES**

|   | <b>Page</b> |
|---|-------------|
| 1. Descriptive Logs of Test Wells ..... | 41          |
| 2. Geophysical Logs of Test Wells ..... | 71          |
| 3. Schematics of Test Wells .....       | 87          |



---

## INTRODUCTION

### Purpose and Scope

The Edwards aquifer (Austin region) is the principal source of ground water in parts of Hays, Travis, Williamson, and Bell Counties. As the need for further water development becomes pressing, it is useful to know in more detail the quantitative aspect of the ground-water resources of the Edwards aquifer within the Austin region.

Because only a limited amount of water-quality data is available, a test-well drilling investigation was initiated in December of 1985 to acquire information to more accurately define the downdip limits of usable-quality water in the Edwards aquifer.

The Texas Water Development Board's drill rig was used to drill eight test holes to evaluate the aquifer's chemical and lithologic characteristics. Test hole sites were located where water quality data was limited or unavailable and where equipment limitations would not be prohibitive. When feasible, additional water samples were collected from existing wells, and the Board's pump equipment was used to obtain water samples from any non-equipped wells in the region.

Additional objectives of this study were to evaluate the Board's recently acquired geophysical sonic tool; and its ability to interpret formation porosity in a carbonate aquifer, which will be presented in another report. The sonic tool was used to confirm the extent and lithologic characteristics of the Regional Dense Member of the Person Formation. These objectives required the laboratory analysis of cored sections recovered from the Edwards Limestone.

This report represents the results obtained from this investigation conducted between December 1985 and December 1987. In addition to the information provided in this report, further data on the individual wells used in the investigation is on file and available from the Board.

---

### Location and Extent

The Austin region, as used in this report, encompasses a segment of the Edwards aquifer which extended from near Kyle in Hays County to near Belton in Bell County, a distance of 80 miles, and has an irregular width of from 4 to 30 miles. The study area includes parts of Hays, Travis, Williamson, and Bell Counties (Figure 1) where the Edwards aquifer contains water of less than 3,000 milligrams per liter (mg/l) dissolved solids based on current information. The locations of test holes and other selected well sites, are shown in Figure 5.

---

## Previous Investigations

The Texas Water Development Board, U. S. Geological Survey, and other governmental entities, as well as private consultants, have gathered ground-water data in parts of the Austin Region for regional, countywide, or local investigations. The more detailed investigations dealing with the geology and related subjects in Hays, Travis, Williamson, and Bell Counties are listed in the references at the end of this report.

---

## Personnel

This investigation was conducted with personnel of the Planning Division of the Texas Water Development Board, under the general direction of Tommy Knowles, Division Director, and Henry Alvarez, Chief of the Ground Water Section. Direct supervision was provided by Bernie Baker, Leader of the North Texas Ground Water Study Group.

The author served as rig geologist. Quality assurance management was provided by Gail Duffin and John B. Ashworth, both geologists with the Ground Water Section. Geophysical logging was conducted by Doug Crim and Steve Gifford of the Ground Water Section, and by John R. Hoyt of the Edwards Underground Water District in San Antonio.

The Board's Materials Laboratory and Core Drill Unit conducted the drilling and testing process under the supervision of Marion Striegler. The drilling crew consisted of Lewis Barnes, Chris R. Bufkin, Tony Connell, Chad Danner, and Mark E. Hayes. Finally, Steve Gifford drafted the illustrations.

---

## Acknowledgements

Generous assistance was provided by the Texas State Department of Highways and Public Transportation in allowing some test holes to be drilled on State highway rights-of-way. Also, the Texas State School for the Deaf provided invaluable material assistance such as welding and cutting equipment, and casing coupling, as well as a drilling site.

In addition, Mr. Ken Henderson of Pflugerville generously provided his property for drilling site 4 (58-36-503 in the statewide well-numbering grid system), and the U. S. Army Corps of Engineers provided drilling site 5 (58-22-402). The author would also like to thank the many property owners and interested citizens for providing information on local subsurface geologic and hydrologic conditions. The cities of Austin, Buda, and Pflugerville provided the necessary supplies of water for the drilling operations.

The Edwards Underground Water District provided timely assistance by logging the initial intervals of test wells 2 (58-58-213) and 4 (58-36-503).

## STRATIGRAPHY

The Edwards aquifer is composed of hard, porous, and fossiliferous limestones and dolomites and is confined between two relatively impervious formations, the overlying Del Rio Clay and underlying Walnut Clay. Collectively these limestones are considered the principal aquifer and include, in ascending order: the Comanche Peak Limestone; the Edwards Limestone, consisting of the Kainer Formation, and the Person, the Kiamichi and Duck Creek Formations where present; and the Georgetown Limestone. The stratigraphic units associated with the Edwards aquifer in the Austin region are shown in Table 1.

The various members of the Walnut Clay combine to make up a gray to tan, soft to very hard limestone. The formation consists of fine- to medium-grained fossiliferous limestones with layers of fine-grained marl, marly limestone, clays, and nodular limestone. The formation yields little or no water.

The Comanche Peak Limestone consists of a marly, grayish-white limestone containing nodules and fossils. It has considerable flaking and jointing which gives it a fractured appearance. The maximum thickness of the Comanche Peak in the study area is 100 feet, but it pinches out to the east and south. The Comanche Peak does not appear to be present south of the Colorado River. Because it is believed to be hydrologically connected with the Edwards Limestone, the Comanche Peak is included in the Edwards aquifer hydrologic network, although it yields little or no water to wells.

The Person and Kainer Formations consist of 200 to 470 feet of brittle, thickbedded to massive limestones, commonly dolomitic, containing minor beds of shale, clay, and siliceous limestones. Beds of chert and flint are common. "Honeycomb" limestone beds are also common and contain numerous voids, many interconnected, from which shell material has been dissolved. Dolomitic beds commonly have a sugary texture and often are designated as "sandstone" or "sandy limestone" by many drillers.

There are several solution-collapse zones which represent former beds of gypsum (originally anhydrite) that have been removed by solution. About 60 to 80 feet from the base of the Kainer Formation is a 5 to 10 foot thick solution-collapse zone. Higher in the aquifer, a 20 foot thick, iron-stained, cavernous, solution-collapse zone containing brecciated limestone, dolomite, chert, crystalline calcite, and residual red clay is present in the Kainer Formation. This widespread zone in Central Texas represents the former extent of a thick gypsum and anhydrite unit called the Kirschberg Evaporite. Where the gypsum and anhydrite have largely been removed, it is called the Kirschberg Solution Zone. Near the top of the Person Formation is another thin solution zone. These solution-collapse zones, especially the Kirschberg, are the main water-bearing horizons in the Edwards Limestone. Well yields range from small (5 to 25 gallons per minute) to large (over 200 gallons per minute).

A 5 to 25 foot section of marl, clay, argillaceous limestone, and shell aggregates make up the "Regional Dense Bed" (Rose, 1972). This bed occurs within the Edwards in the southern portion of the study area and is a part of the Person Formation. It effectively separates the Person hydrologically from the underlying Kainer Formation (Table 1). In northern Travis County the eroded Person Formation (including the Regional Dense Member) is represented by the Kiamichi and Duck Creek Formations which hydrologically separate the remaining Edwards Limestone from the overlying Georgetown Limestone.

The Georgetown Limestone is a nodular, usually gray to tan, massive limestone, interbedded with layers of marl or marly shale. The limestone commonly contains burrows filled with fossil fragments, and some minor solution zones. Downdip the formation ranges from 40 to 110 feet thick. The Georgetown and Edwards Limestones are in hydrologic continuity in the southern study area. Where the Person Formation has been eroded away, the Duck Creek and Kiamichi can provide a hydrologic barrier between the remaining Edwards Limestone and the Georgetown Limestone. In this report, the Edwards aquifer is divided into two hydrogeologic units referred to as the upper and lower units, with the Regional Dense Member and Kiamichi and Duck Creek Formations forming the hydrogeologic boundary. This is done to show the various aquifer characteristics of the units and to follow previous stratigraphic nomenclature (Rose, 1968). The hydrologic characteristics of the various geologic units which make up the Edwards aquifer are shown in Table 1.

The Del Rio Clay is a greenish-gray to olive-brown, selenitic, calcareous, pyritic, and fossiliferous clay. Kaolinite comprises about 50 percent of the clay mineral fraction. Illite is generally present in unweathered samples in much larger quantities than montmorillonite. This suggests that during the weathering process illite apparently alters to montmorillonite, since weathered samples contain only small quantities of illite. The clay obtains a maximum thickness of 85 feet within the study area.


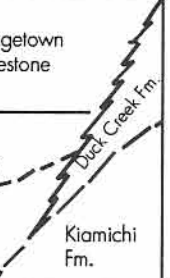
The Buda Limestone consists of an upper hard, resistant, fine-grained, burrowed, glauconitic, shell-fragment limestone and a lower marly, nodular, and less resistant limestone. Total thickness of the Buda in the Austin region is about 50 feet, with the unit thinning northward. Freshly exposed surfaces of the Buda are characteristically colored shades of tan to orange-brown that resemble discolorations caused by heating. Many early descriptions of this unit termed it the "burnt" limestone.

The Woodbine Group is represented by a thin shale facies in the northernmost part of the study area, east of any faulting. It thins southward and is difficult to distinguish in most of the region.

In the Austin region the Eagle Ford Group is predominantly a calcareous shale with a middle silty limestone and an upper shale. Montmorillonitic clay is abundant throughout.

The Austin Chalk consists of a gray chalk, limy marl, and chalky limestone. Some bentonite, glauconite, and pyrite nodules are also present in the unit. Near igneous intrusions and extrusions, such as

**Table 1**  
**Geologic Units and Their Water-Bearing Characteristics**

| System     | Series   | Group             | Stratigraphic Unit  | Hydrologic Characteristic  | Maximum Thickness     | Character of the Rocks   | Water-Bearing Characteristics*  |  |
|------------|----------|-------------------|---|--|-----------------------|--|---|--|
| Cretaceous | Gulf     | Navarro           |   | Aquifer  | 1200                  | Massive beds of shale and marl with clayey chalk, clays and some sand. Nodular and phosphatic zones. | Very small amounts of fresh to moderately saline water.   |  |
|            |          | Taylor            |   |  |                       |  |   |  |
|            |          |                   |  | Aquifer  | 700                   | Altered pyroclastics, basalt intrusions and flows.   | Very small quantities of fresh water locally.   |  |
|            |          |                   | Austin Chalk  | Aquifer  | 600                   | Massive beds of chalk and marl with bentonitic seams, glauconite, and pyrite.                        | Small to very small quantities of fresh water.  |  |
|            |          | Eagle Ford        |   | Confining Unit   | 110                   | Calcareous shale with thin beds of silty and sandy, flaggy limestone.                                | Not known to yield water.   |  |
|            |          | Woodbine          |   | Aquifer  | 25                    | Shale, clay, some lignite and gypsum.  | Not known to yield water in study area.   |  |
|            | Comanche | Washita           | Buda Limestone  |  | Aquifer               | 50   | Massive, fine-grained, shell-fragment limestone.  | Little or no water.  |
|            |          |                   | Del Rio Clay  |  | Confining Unit        | 85   | Clay and marl with gypsum, pyrite and some siltstone and sandstone beds.  | Not known to yield water.  |
|            |          |                   | Georgetown Limestone  |  | Upper Edwards Aquifer | 110  | Thin interbeds of richly fossiliferous, nodular, massive fine-grained limestone and marl.   | Small to very large quantities of fresh water, especially from fractures and cavernous zones in or near the Edwards Limestone. |
|            |          | Edwards Limestone | Person Formation  |  |                       |  |   |  |
|            |          |                   | Regional Dense Member   |  | 25                    | 50   |   |  |
|            |          | Fredericksburg    | Kainer Formation  |  | Lower Edwards Aquifer | 300  | The Regional Dense Member, Duck Creek Formation, and Kiamichi Formation consist of argillaceous, marly limestone and shell aggregate. | The Regional Dense Member, Duck Creek, and Kiamichi are not known to yield water.  |
|            |          |                   | Comanche Peak Limestone   |  |                       |  |   |  |
|            |          |                   | Walnut Clay   |  | Confining Unit        | 120  | Hard and soft limestone, marl, and clay.  | Little or no water.  |

\* Yields of Wells: Small – less than 25 gallons per minute (gpm)  
Moderate – 25 to 200 gpm  
Large – more than 200 gpm

Chemical Quality of Water: Fresh – less than 1,000 milligrams per liter (mg/l)  
Slightly Saline – 1,000 to 3,000 mg/l  
Moderately Saline – 3,000 to 10,000 mg/l  
Very Saline – 10,000 to 35,000 mg/l  
Brine – more than 35,000 mg/l

Modified from Rose, 1968

those around Pilot Knob in the southeast part of Travis County, the Austin Chalk is partially metamorphosed into a recrystallized limestone. Downdip, its thickness ranges from 300 to 600 feet. In the outcrop, the thickness is considerably less.

The Austin Chalk outcrop trends northeast to southwest completely across Texas, and it has a surface exposure primarily in the Balcones fault zone through the Austin region.

Lithologically, the Taylor and Navarro Groups are very similar and are treated in this report as a single unit. They consist of massive beds of shale, siltstone, marl, and chalk with some clay.

For the purposes of this report, Figure 1 illustrates the outcrop areas of rocks older and younger than those comprising the Edwards aquifer. Those older rocks include of the Walnut Clay and others not discribed here. Younger rocks include the Del Rio Clay, Buda Limestone, Woodbine Group, Eagle Ford Group, Austin Chalk, and Taylor and Navarro Groups.



## HYDROGEOLOGIC FRAMEWORK

This discussion is limited to the hydrogeologic framework of the Edwards aquifer. A description of the rocks from the land surface down through the Edwards aquifer is presented by drillers' logs of test wells in Appendix 1.

The Edwards aquifer, for the purposes of this report, includes the Kainer Formation, the Regional Dense Member, the Kiamichi Formation, the Person Formation, the Duck Creek Formation, the underlying Comanche Peak Limestone, and the overlying Georgetown Limestone, all of early Cretaceous age.

The disruption of the Edwards aquifer by the intense faulting along the Balcones fault zone (Figure 1) has limited the occurrence of fresh to slightly saline water. Consequently, the area of usable quality water is smaller in Hays and Travis Counties where the faulting is more prevalent than in Williamson and southern Bell Counties (Baker and others, 1986).

Knowledge of the local depth to the top and base of the aquifer provides a practical guideline for drilling wells and, in general, for properly managing the orderly development and protection of the aquifer. The Edwards aquifer within this area varies in depth, but variations are generally gradual except in the areas of intense faulting.

The altitude of the top of the Edwards aquifer throughout the report area is illustrated in Figure 2. The depth to the top is given at selected well locations, based on available data. An approximate depth to the top at any particular location can be determined by subtracting the altitude of the top of the aquifer, as estimated from contour lines on the map, from the altitude of the land surface at that particular location. The outcrop of the Edwards aquifer represents the aquifer's eroded top that is exposed at the land surface.

The aquifer dips to the east-southeast at an average slope of 70 to 75 feet per mile. The slope of the aquifer surface, as well as its depth and elevation, varies significantly over short distances in areas of intense faulting. The faulting has caused the aquifer surface to be highly irregular.

The greatest depth to the top of the Edwards aquifer, where it still contains water having generally less than 3,000 mg/l of dissolved solids, is approximately 1,200 feet below land surface at the City of Taylor in eastern Williamson County. The shallowest occurrence of water having generally 3,000 mg/l or less of dissolved-solids concentration occurs midway between Interstate Highway 35 and the Barton Creek confluence with the Colorado River in Austin. At this location, the top of the aquifer is only about 150 feet deep.

The top of the aquifer is identified in the subsurface by an abrupt change in the character of the rocks. Drillers' logs and geophysical

logs of boreholes show a marked change in lithology at the contact of the overlying Del Rio Clay and the hard Georgetown Limestone at the top of the aquifer (Baker and others, 1986).

The configuration of the base of the Edwards aquifer is shown in Figure 3. The base, which generally dips toward the east-southeast at a slope of 70 to 75 feet per mile, is cut by numerous faults. These faults have caused the base to be offset a few feet to several hundreds of feet along the fault planes. The individual faults extend laterally for distances ranging from a fraction of a mile to more than 10 miles.

The base of the Edwards aquifer extends from the land surface at many places along the western edge of the aquifer's outcrop to depths of hundreds of feet east of the outcrop. The depth to the base, where the aquifer contains water having generally 3,000 mg/l or less of dissolved solids, ranges from about 1,500 feet below land surface at Taylor to about 550 feet below land surface about 1 mile west of Interstate Highway 35 at the Colorado River in Austin (Baker and others, 1986).

The base of the aquifer is less discernible than the top in the subsurface. Drillers' logs and geophysical logs of the boreholes do not show a sharp break in the lithologic character of the rocks. The rocks underlying the Edwards aquifer—the Walnut Clay or its various members—are composed of marly limestone and, thus, are somewhat similar in lithology to the aquifer in Williamson and Bell Counties. In Travis and Hays Counties, these underlying units are thinner and more difficult to identify in the subsurface.

The Edwards aquifer yields water much more readily than the underlying rocks because of its greater secondary permeability. Consequently, the base of the Edwards aquifer is defined as the base of the rocks having the greater wateryielding capabilities.

The uneroded thickness of the Edwards aquifer decreases overall from south to north along the strike, and in many areas increases from west to east downdip (Figure 4). Within the Austin region from Kyle to Belton, the uneroded thickness of the Edwards aquifer decreases from about 470 feet in eastern Hays County to about 225 feet in southern Bell County.

Along the outcrop, where the aquifer's thickness is influenced by erosion as well as faulting, the thickness ranges from zero to a maximum of about 470 feet.

## METHODS OF INVESTIGATION

### Drilling Investigation

Drilling began in December 1985. Drill sites were based on drilling depth limitations and proximity to the Edwards aquifer "bad-water" line. This limited the test hole sites in Travis County because of large fault displacements within a few miles from the aquifer outcrop. Locations of test holes and other selected wells are shown on Figure 5. The drilling investigation was completed in December 1987.

Eight test holes totaling a depth of 6,613 feet were drilled. Detailed stratigraphic logs were written for each (Appendix 1). When possible all test holes were drilled through the Edwards aquifer and into the top of the Walnut Clay. The desired coring interval was preselected to provide samples of the entire aquifer sequence, from the base of the Del Rio Clay to the top of the Walnut Clay. Approximately 417 feet of recovered core was taken from test holes 1, 4, and 7.

The Board's proposal was to core one test well south of the Colorado River and another north of the Colorado River in Travis County. This approach was used to determine the consistency and characteristics of the aquifer, and extent of the Regional Dense Member in an area of suspected transition. This also allowed correlation between test holes through the use of geophysical logs. This approach saved time and expense while allowing maximum data acquisition.

Cores obtained in Travis County from test well 1 (58-50-603), south of the Colorado River, provide quantitative results concerning the hydrogeologic boundaries of the Regional Dense Member (between the upper and lower Edwards aquifer), the Georgetown Limestone, and the Person and Kainer Formations. Cores from test well 7 (40-61-705), in Bell County, do not indicate an equivalent confining layer. An attempt to recover representative cores in the Edwards was unsuccessful in test well 4 (58-36-503) in Travis County due to the poor quality of the water encountered in the top of the Edwards as well as the drilling rig's depth limitations. The desired comparison cannot be completed until core is recovered north of the Colorado River where the Regional Dense Member or its equivalent may occur.

The Texas Water Development Board's drilling rig was used for all test drilling and has a maximum practical depth limit of 1,200 feet. The drilling rig's equipment consists of a modified (extended mast, large mud pump, and break-out table) Failing 1500 drilling rig, two water trucks, and two pickups which carry support equipment and supplies.

The test wells were drilled with bits that were changed to suit various lithologies, and drill speeds. The size of these bits ranged from 6-1/4 to 8-5/8 inches. Flush jointed drill pipe with a 4-inch outside diameter was used to drill all test holes. Some test holes were drilled with the aid of drill collars. A Christensen 5 3/4-inch by 4-inch core barrel with a diamond drill bit was used to retrieve core samples. The Board's rubber packer and nitrogen gas system was used with a 1-inch air jetting pipe to isolate and recover water samples.

With few exceptions, the drilling procedure remained the same throughout the study. Test holes were drilled from the surface to the top of the Georgetown Limestone using either a 7-7/8 or 8-5/8 inch roller bit. A Gamma Ray log was produced to confirm the formations penetrated and to determine an appropriate amount of casing.

When possible, steel casing was set to the base of the Del Rio Clay allowing the clay to squeeze around the casing. This process isolated the Edwards aquifer from any formational water in overlying units and allowed some of the casing to be recovered.

A smaller drill button bit was used below the casing point to obtain a straight hole and to allow for the safe passage of drilling mud, cuttings, water sampling and geophysical tools. Bits were changed periodically when encountering significantly different formation characteristics. Beds containing chert nodules required short knobby bits while very soft marls and shales required a wing bit. Drill collars were used to increase drill speed and insure a straight hole. Reaming was done when required.

A 10-foot double-walled core barrel was used to core the Edwards aquifer. The inner barrel is a thin-walled tube with a core catcher attached to the bottom to hold the core in the tube. The outer barrel rotates and cuts the rock with a 5-inch diamond tipped core bit.

A constant supply of drilling fluid (fresh water or mud) was used to cool the drill bits. Fresh water was delivered to each test hole by the Board's 900 and 2,000-gallon water trucks. Water was then unloaded into adjacent mud pits to provide a large fluid reserve. Circulation of the drilling fluid could not be maintained while drilling in the Edwards aquifer in test well 1 (58-50-603), and "lost circulation drilling" was required. In "lost circulation drilling", drilling fluid is still pumped to the drill bit while drilling, coring, or reaming and then is lost to the porous rock formation.

The majority of the Edwards aquifer sections, below the casing point, were drilled with mud. The mud lubricated the well bore and provided buoyancy for the cuttings to be pushed out into the formation. It should be noted that a new foam for air drilling was used on test well 4 (58-36-503), called "Super-Mud." This increased the drilling speed while removing large cuttings from the borehole.

When possible, drilling continued through the entire Edwards aquifer and into the top of the Walnut Clay. This procedure ensured that the entire Edwards Limestone would be reflected on geophysical logs of the test holes.

Problems encountered during the drilling investigation were as follows:

- (a) maintaining an adequate supply of water;
- (b) slow drilling rates in intervals of chert and other hard rock;
- (c) variable lithology and the fracturing tendency of the Edwards aquifer, which caused some poor core recovery; and
- (d) obstructions such as chert nodules, sometimes leading to equipment damage.

---

## Well Site Procedure

A very important part of the test hole investigation was the well-site descriptive log prepared by the rig geologist. These logs represent a continuous lithologic description of both the core and cutting samples. The description of the cuttings and core at the drill site was divided into the following:

1. *Identification of rock as to its stratigraphic unit.* The stratigraphic nomenclature used to identify the various units is illustrated in Table 1 and on all well logs in the Appendices.
2. *Description of rock material.* When practical, this included the dominant rock type, color, particle size, roundness, matrix, inclusions, occasionally fossil content, and depositional texture (as shown in Appendix 1).
3. *Classification of porosity.* Classification parameters for estimated porosity are also described in Table 2.

A record of drilling time was kept by means of a geograph. The geograph does not reflect the varying amount of drill-bit pressure, but the weight of the drill stem alone.

Core recovery was determined for all core runs and recorded as a percentage for each 10-foot interval. All of these data are presented in the descriptive log for each hole and are shown in Appendix 1.

Water samples were collected as drilling progressed and after other waterbearing formations had been sealed off. The point of collection was a discharge pipe which directed water into the mud pits.

Water samples were retrieved up by placing a 1-inch pipe inside the open-ended drill stem. Air was forced down the smaller pipe and out into a larger diameter drill stem, lifting the water flow to the surface through the discharge pipe. Two types of sealants were used to insure accurate water samples. One way to obtain a water sample was to set casing opposite any water-bearing formations that may have influenced a test. Another way was utilizing a rubber-packer system using nitrogen gas to expand a rubber seal outwards, thereby sealing off any water influence from formations above or below the desired interval.

Field conductivity, temperature, and pH testing were conducted at the well site. Test holes were air jetted for various lengths of time until it was determined that the water sample being collected had stabilized by providing consistent conductivity, temperature, and pH values; and was representative of the Edwards aquifer and did not contain any fresh mud or mud cake from the borehole. All water samples were sent to the Texas Department of Health for a more detailed laboratory analysis.

Finally, some water samples were obtained from existing wells using the Board's pump-pulling unit. When possible, this unit would remove old broken pumps and lower the Board's own pump into the well to retrieve a water sample. All such wells were logged to confirm total depth, producing formations, and well completion and condition.



**Table 2**  
**Classification Systems**  
**Archie's System of Classifying Matrix Porosity**

| Texture of Matrix                       | Appearance of Hand Sample  | Appearance under Microscope<br>10X  | Matrix <sup>1</sup> | Percent Porosity |
|---|--|---|---------------------|------------------|
| <b>Type I</b><br>Compact<br>Crystalline |  |   | IA                  | < 1-3            |
|   |  |   | IB                  | 1-4              |
| <b>Type II</b><br>Chalky                | Dull, earthy, or "chalky." Crystalline appearance absent because small crystals are less tightly interlocked, thus reflecting light in different directions, or made up of extremely fine granules or sea organisms. May be siliceous or argillaceous. | Crystals less effectively interlocking than the foregoing, joining at different angles. Extremely fine texture may still appear "chalky" under this power but others may begin to appear crystalline.<br><br>Grain size for this type is less than about 0.05 millimeter. Coarser textures classed as Type III. | IIA                 | 1-5              |
|   |  |   | IIB                 | 2-8              |
| <b>Type III</b><br>Granular             | Sandy or sugary appearing (Sucrosic).<br>Size of crystals or granules classed as:<br>Very fine < 0.05 millimeter<br>Fine < 0.10 millimeter<br>Medium < 1.0 millimeter  | Crystals interlocking at different angles, generally allowing space for considerable porosity between crystals.<br>Oolitic and other granular textures fall in this class.  | IIIA                | < 1-3            |
|   |  |   | IIIB                | 2-8              |
|   |  |   | IIIC                | 5-15             |

<sup>1</sup> The visible pore size may be classed as follows:

- Class A: No visible porosity under about 10-power microscope, or pore size is less than about 0.01 millimeter in diameter.  
Class B: Visible porosity greater than 0.01 millimeter, but less than 1.0 millimeter.  
Class C: Visible porosity greater than 1.0 millimeter, but less than 4.0 millimeters.

Modified by Sieh, 1975

**Table 2-continued**  
**Classification Systems**  
**Waldschmidt's Classification of Fractures in Cores**

| Type             | Orientation | Deposition of Minerals | Angle        |
|------------------|-------------|------------------------|--------------|
| Open             | Vertical    | Manganese              | Parallel     |
| Partially Filled | Horizontal  | Iron                   | Intersection |
| Filled           | Random      | Calcite                |              |
| Closed           | High Angle  | Calcite Crystals       |              |
|                  |             | Asphalt                |              |

Modified by Sieh, 1975

**Table 2-continued**  
**Classification Systems**  
**Choquette and Pray's System of Identifying Porosity Types**

**Basic Porosity Types**

**Fabric Selective**



Interparticle



Intraparticle



Moldic



Fenestral

**Not Fabric Selective**



Fracture



Channel



Vugular



Cavity or Cavern

**Modifying Terms**

| Time of Formation | Process           | Direction of Stage | Classes        | Range (mm) <sup>1</sup> |
|-------------------|-------------------|--------------------|----------------|-------------------------|
| Primary           | Solution          | Enlarged           | Megapore large | 35-256                  |
| Secondary         | Cementation       | Reduced            | Megapore small | 4-32                    |
|                   | Internal Sediment | Filled             | Mesopore large | 1-4                     |
|                   |                   |                    | Mesopore small | 1/8-1                   |
|                   |                   |                    | Microspore     | < 1/8                   |

<sup>1</sup> Range of pore sizes average diameter in millimeters.

Modified by Sieh, 1975

The laboratory results of the water sampling are shown on Figure 5. Field conductivity and pH tests were taken on the fluid in the mud pits to monitor any change in chemical quality. This was done to avoid discharging any undesirable water into the surface environment.

---

## Core Testing

Cores were taken from test wells 1 (58-50-603), 4 (58-36-503), and 7 (58-36-503) to get a detailed lithologic description of the Edwards aquifer. Due to the poor quality of the formation water encountered, test hole 4 (58-36-503) was abandoned after minimal core recovery. The rig geologist selected certain sections in each core run to be tested by the Board's Materials Testing Laboratory. Only the more competent sections of the Edwards aquifer were tested, due to breakage of less competent sections in the core barrel and lack of core recovery. Tabulations of the core analysis tests on test holes 1 and 7 are shown on Tables 3 and 4.

Field tests to determine the calcite/dolomite ratio of selected intervals of core were performed. The test method is a color-reaction/time experiment which employs the use of a reagent on a crushed sample. Pure dolomite being identified by its reaction time in conjunction with a 15 percent diluted HCl acid solution. The method and chemicals used are described in Shell Oil Company's Sample Examination Manual (Swanson, 1981).

The Board's Materials Testing Laboratory conducted the following tests on the core samples for analysis:

**Bulk Density:** the weight per unit of volume, measured in pounds per cubic foot.

**Porosity:** the ratio of the volume of the interstices to the tested or bulk volume of the sample, expressed as a percentage of the total volume occupied by the interconnecting interstices.

**Vertical permeability:** the measure of the relative ease with which a porous medium can transmit a liquid under a potential gradient, the flow rate measured in gallons per day/ per square foot at 60° F (gal/day/ft<sup>2</sup> at 60° F).

---

## Disposition of Core

After testing at the Board's Materials Testing Laboratory, all usable cores and core fragments were marked and stored in cardboard boxes. These were then sent to the Bureau of Economic Geology's Well Sample and Core Library located at the Balcones Research Center in Austin, Texas.

---

## Geophysical Logs

The Texas Water Development Board's logging unit and the Edwards Underground Water District logger (San Antonio) ran borehole geophysical logs on all test wells. The geophysical logs completed on each test well are shown in Appendix 2. These logs can be studied in conjunction with the well site descriptive logs and core



**Table 3**  
**Laboratory Core Analysis of**  
**Test Hole 1 (58-50-603)**

| <b>Depth<br/>(feet of 6" cores)</b> | <b>Bulk Density<br/>( lb/ft <sup>3</sup> )</b> | <b>Porosity<br/>Percent</b> | <b>Vertical<br/>Permeability<br/>(gal/day/ft.<sup>2</sup>)</b> |
|-------------------------------------|--|-----------------------------|--|
| 331                                 | 2.41   | 0.08                        | imp.   |
| 335                                 | 2.41   | 0.07                        | imp.   |
| 337                                 | 2.42   | 0.07                        | imp.   |
| 340                                 | 2.49   | 0.04                        | imp.   |
| 411                                 | 1.96   | 0.17                        | imp.   |
| 413                                 | 1.91   | 0.32                        | imp.   |
| 415                                 | 1.93   | 0.39                        | .082   |
| 416                                 | 2.00   | 0.37                        | .100   |
| 418                                 | 2.06   | 0.39                        | .010   |
| 420                                 | 2.64   | 0.02                        | imp.   |
| 422                                 | 2.07   | 0.25                        | .025   |
| 424                                 | 2.53   | 0.06                        | imp.   |
| 426                                 | 2.41   | 0.05                        | imp.   |
| 433                                 | 2.52   | 0.13                        | imp.   |
| 444                                 | 2.52   | 0.08                        | imp.   |
| 471                                 | 2.16   | 0.27                        | .508   |
| 475                                 | 2.20   | 0.30                        | .110   |
| 477                                 | 2.14   | 0.29                        | .990   |
| 479                                 | 2.00   | 0.32                        | .150   |
| 483                                 | 2.25   | 0.16                        | .002   |
| 487                                 | 2.29   | 0.10                        | imp.   |
| 489                                 | 2.26   | 0.20                        | .167   |
| 490                                 | 2.25   | 0.20                        | .001   |
| 494                                 | 2.24   | 0.18                        | imp.   |
| 497                                 | 2.16   | 0.21                        | .020   |
| 499                                 | 2.15   | 0.22                        | .008   |
| 500                                 | 2.16   | 0.24                        | .033   |
| 511                                 | 2.33   | 0.21                        | .002   |
| 515                                 | 2.49   | 0.09                        | imp.   |
| 516                                 | 2.41   | 0.14                        | imp.   |
| 517                                 | 2.40   | 0.13                        | imp.   |
| 519                                 | 2.26   | 0.26                        | imp.   |
| 520                                 | 2.99   | 0.09                        | imp.   |
| 522                                 | 2.18   | 0.16                        | .095   |
| 524                                 | 2.34   | 0.17                        | .180   |
| 527                                 | 2.13   | 0.22                        | .196   |
| 530                                 | 2.04   | 0.20                        | .420   |
| 532                                 | 2.68   | 0.17                        | imp.   |
| 533                                 | 2.18   | 0.26                        | .047   |
| 535                                 | 2.40   | 0.19                        | imp.   |
| 537                                 | 2.37   | 0.17                        | .008   |
| 538                                 | 2.26   | 0.21                        | .309   |
| 539                                 | 2.18   | 0.19                        | .450   |
| 540                                 | 2.29   | 0.12                        | .077   |
| 542                                 | 2.14   | 0.28                        | .504   |

**Table 4**  
**Laboratory Core Analysis of**  
**Test Hole 7 (40-61-705)**

| <b>Depth<br/>(feet of 6' cores)</b> | <b>Bulk Density<br/>(lb/ft<sup>3</sup>)</b> | <b>Porosity<br/>Percent</b> | <b>Vertical<br/>Permeability<br/>(gal/day/ft<sup>2</sup>)</b> |
|-------------------------------------|---|-----------------------------|---|
| 37                                  | 2.48  | 0.12                        | 0.001   |
| 40                                  | 2.44  | 0.20                        | 0.002   |
| 60                                  | 2.51  | 0.13                        | 0.002   |
| 69                                  | 2.55  | 0.10                        | 0.001   |
| 70                                  | 2.50  | 0.12                        | imp.  |
| 85                                  | 2.29  | 0.18                        | 0.006   |
| 86                                  | 2.30  | 0.26                        | 0.008   |
| 89                                  | 2.55  | 0.08                        | 0.002   |
| 94                                  | 2.37  | 0.24                        | 0.003   |
| 95                                  | 2.09  | 0.34                        | 0.170   |
| 96                                  | 2.19  | 0.34                        | 0.053   |
| 98                                  | 2.10  | 0.41                        | 0.105   |
| 106                                 | 2.16  | 0.32                        | 2.240   |
| 114                                 | 2.07  | 0.42                        | 3.180   |
| 117                                 | 2.06  | 0.41                        | 12.210  |
| 119                                 | 2.11  | 0.31                        | 2.870   |
| 130                                 | 2.05  | 0.43                        | 0.660   |
| 134                                 | 2.00  | 0.43                        | 9.650   |
| 135                                 | 1.96  | 0.44                        | 6.050   |
| 136                                 | 2.03  | 0.52                        | 11.930  |
| 137                                 | 1.98  | 0.44                        | 2.360   |
| 140                                 | 1.99  | 0.40                        | 1.850   |
| 141                                 | 2.04  | 0.42                        | 6.170   |
| 145                                 | 2.00  | 0.47                        | 0.290   |
| 146                                 | 2.01  | 0.46                        | 1.720   |
| 149                                 | 2.02  | 0.42                        | 0.770   |
| 151                                 | 2.02  | 0.41                        | 2.010   |
| 158                                 | 2.50  | 0.18                        | imp.  |
| 167                                 | 2.45  | 0.12                        | 0.001   |
| 174                                 | 2.46  | 0.15                        | 0.006   |
| 180                                 | 2.48  | 0.17                        | 0.002   |

analysis of each test hole. These logs provided stratigraphic and hydrogeologic data. The following is a listing of the borehole geophysical logs with a short description of their capabilities:

**Spontaneous Potential:** recording of the differences between the potential of a moveable electrode in the borehole and the fixed potential of a surface electrode; used to detect the permeable beds, geologic correlations, and to determine values of a formation's resistivity.

**Gamma Ray:** a record of the amount of natural radioactivity within the formations penetrated by a borehole; used for geologic correlation in open or cased holes.

**Neutron:** responds primarily to the amount of hydrogen present in the formation; a reflection of the amount of liquid-filled porosity.

**Gamma-Gamma:** records the intensity of gamma radiation from a source in the probe after it is backscattered and altered within the borehole and surrounding rocks; used to measure bulk density and porosity.

**Caliper:** measures average borehole diameter to select packer settings, calculate cement volume, and check mud cake.

**Resistivity:** currents are passed through the formation via electrodes, and voltages are measured between other electrodes. These measured voltages provide the resistivity determinations; these logs are used for defining formations, correlations, and for qualitative and quantitative analyses in terms of saturation and porosity.

**Sonic:** a record of the transit time of an acoustic pulse between transmitters and receivers in a probe; used for the measurement of porosity and the identification of fractures.

The Sonic log porosity values ( $\phi$ ) were derived using the formula:

$$\phi = \frac{\Delta^t \log - \Delta^t ma}{\Delta^t f - \Delta^t ma}$$

Where  $\Delta^t ma$  (travel time of the matrix) is 47.6  $\mu\text{s}/\text{ft}$  (microseconds per foot), and because of the limestone nature of the material involved,  $\Delta^t f$  (fluid medium transit time) is 218  $\mu\text{s}/\text{ft}$ . The value 218  $\mu\text{s}/\text{ft}$  was used instead of the common 189  $\mu\text{s}/\text{ft}$  because it better represents the travel time ( $\Delta^t$ ) in a "fresh" water medium as opposed to brine water.

## RESULTS

The following section summarizes the physical aspects of the test hole investigation and illustrates the data collected. The drilling and coring statistics for each test hole can be found in Table 5. Figure 5 represents the end product of this investigation and shows the chemical analyses of selected wells. Appendix 2 illustrates the various geophysical logs for each test hole, while Appendix 3 shows the well schematic, lithology, water quality, and completion intervals of each test hole.

The well schematics in Appendix 3 also show the zones from which water samples were obtained in each of the test holes along with the chemical results (in total dissolved solids) and the yields. Of particular interest are the individually sampled zones in test wells 1 and 3. Figure 5 shows the locations of all test holes and the sulfate, chloride, and total dissolved solids content of the water for each well.

Figure 6 illustrates the "bad-water" line of Baker and others (1986), and a modified line using the data acquired during this investigation. This figure also shows the net gains and losses of area for the Edwards aquifer by comparison of the two "bad-water" lines.

**Table 5**  
**Drilling and Coring Statistics**

| Test Hole Number | State Well Number | County     | Total Depth (feet) | Footage Drilled | Footage Cored | Percent Core Recovered | Water Used (gallons) |
|------------------|-------------------|------------|--------------------|-----------------|---------------|------------------------|----------------------|
| 1                | 58-50-603         | Tavis      | 779                | 519             | 260           | 90.4%                  | 37,000               |
| 2                | 58-58-213         | Travis     | 1,009              | 1,009           | ---           | ---                    | 30,000               |
| 3                | 58-42-927         | Travis     | 561                | 561             | ---           | ---                    | 40,000               |
| 4                | 58-36-503         | Travis     | 858                | 848             | 10            | 85%                    | 23,000               |
| 5                | 58-22-402         | Williamson | 1,222              | 1,222           | ---           | ---                    | 27,000               |
| 6                | 58-13-301         | Bell       | 1,140              | 1,140           | ---           | ---                    | 22,000               |
| 7                | 40-61-705         | Bell       | 180                | 33              | 147           | 95%                    | 6,000                |
| 8                | 58-12-901         | Williamson | 864                | 864             | ---           | ---                    | 10,000               |
| <b>TOTALS</b>    |                   |            | <b>6,613</b>       | <b>6,196</b>    | <b>417</b>    | <b>90%</b>             | <b>195,000</b>       |



## CONCLUSIONS

The Board's Failing 1500 drill rig with extended mast, large mud pump, and break-out table proved adequate to drill the Edwards aquifer test holes near the outcrop. However, more desirable drilling locations were neglected due to the rig's depth limitations. The two water trucks (900 and 2,000 gallon capacities) provided enough water for both normal drilling operations and for "lost circulation" drilling. Bit wear-out was considered normal for the material encountered, with the average being one roller bit for 200 feet of subsurface drilled. The core barrel, using diamond-tipped core drill bits, was satisfactory for coring the Edwards aquifer. Chert nodules proved to be the only material that could substantially retard or halt the drilling and coring progress. Overall, core recovery exceeded 90 percent.

The use of drilling mud provided a reliable way to remove cuttings and support the borehole; however, on one test hole an excessive amount of mud buildup caused long delays in obtaining water samples. When mudcake buildup moves far out into the formation, a lengthy amount of time for jetting is needed to remove any influence on water sample quality. "Super-Mud", a foam additive used in conjunction with air drilling, helped in obtaining a remarkable rate of penetration and by bringing up larger cutting samples for analysis. The Board's nitrogen-filled rubber packer system was adequate for obtaining water samples.

The following generalizations with respect to the Edwards aquifer, Austin region, were determined from drilling, coring, lab analysis, and log interpretation during this investigation:

1. Water in the Edwards aquifer containing less than 3,000 mg/l dissolved solids in the Austin region shows a significant loss of area from earlier estimates. This is illustrated in Figure 6 where the new delineation of the 3,000 mg/l boundary, which was developed using the data gathered during this investigation, is superimposed upon the old line (Baker and others, 1986). The "bad-water" line is now generally established further west. This loss of area can result in a corresponding decrease of approximately 5 percent in the estimates of total water availability, or 9 percent of the available water in the artesian portion of the aquifer.
2. Core analysis, laboratory tests, and water quality sampling suggest that where the Regional Dense Member occurs, it hydraulically separates the Edwards aquifer into upper and lower units. In some instances, fault displacement may circumvent the barrier effects of this relatively thin bed.
3. Core analysis and log interpretation suggest that the average effective porosity is greater in the upper Edwards aquifer than in the lower. This is the case even though the lower aquifer commonly has a greater occurrence of secondary porosity (channels, fractures,

- vugs). The effect may be the result of a greater abundance of recrystallized rocks in the lower aquifer (Appendix 1).
4. The upper Edwards aquifer, where present, exhibits more diverse value of total porosity, having both the lowest and highest values, while the lower aquifer has more homogenous porosity.
  5. Many of the sucrosic samples (matrix type III) exhibit the same type of secondary porosity, and may have been formed by the filling of vugs and channels. The presence of silt and sand usually indicates a higher porosity.
  6. Where the Regional Dense Member is not present above the Kainer Formation, the rock matrix is more homogenous. This is particularly noticeable with regard to an increase in dolomite and dolomitic limestone northward from the area of occurrence of the Dense Member, at the expense of gypsiferous matrix.
  7. Where the Regional Dense Member is present, the lower Edwards can be more productive. The lower aquifer can also exhibit better quality water than the upper aquifer. This is attributed to the occurrence of solution zones which can contribute enough water of better quality to substantially alter the overall results. However, productivity can vary within a small distance as the Edwards is very anisotropic.
  8. Fluoride concentrations along the "bad-water" line ranged from 1.6 to 8.5 mg/l. The average well near the line had 4.7 mg/l of fluoride. The Texas Department of Health's primary standards suggest a limit of 1.6 mg/l.
  9. Quality and quantity of aquifer waters at a well site may vary substantially at different horizons, particularly where the aquifer matrix is heterogenous (i.e. where the Regional Dense Bed occurs). Better yields and better quality can occur in the lower aquifer.

The Board's logging van provided most of the geophysical logs used in this investigation. The gamma ray log continues to be the most widely used geophysical borehole log for making lithologic determinations. The Board's Sonic tool can provide an accurate determination of lithology and porosity, particularly of the Edwards aquifer (as shown by Rose, 1972). This tool can also provide an acceptable accuracy for the "on site" log interpretation that is necessary when locating depth intervals of high porosity for packer testing.



## RECOMMENDATIONS

The Board should establish monitoring wells adjacent to a pumping well and near the "bad-water" line to determine the extent of movement in the line during periods of heavy pumpage.

New wells drilled where the Regional Dense Member occurs within the Edwards Limestone should penetrate into the lower aquifer to increase yield. This is especially desirable since the lower member may yield better quality water.

Cooperation with local water well drillers should be maintained on a steady basis concerning the immediate availability of data on any wells completed in the Edwards aquifer. Wells that have already been drilled and abandoned should be considered for possible workover efforts by the Board in areas where aquifer characteristics have not been documented. Consideration should also be given to hiring local well drillers to provide workover services that the Board cannot provide.

In regard to future test drilling, the following recommendations are made in conjunction with those drilling procedures already outlined:

1. Preparations should be made in advance when a test site is located on the Navarro/Taylor Group outcrop. The exposed clay of these groups has a tendency to become extremely soft during wet weather, so a caliche base or platforms should be used to support the drill rig and ensure a straight hole. Also, a piece of casing should be temporarily installed below the surface of the ground to support the borehole.
2. The actual borehole should always be covered when drilling operations cease to prevent material or objects from falling inside the hole.
3. Inspection of equipment should be performed on a regular basis, involving such things as drill stem fatigue before adding additional drill stem, and checking all connecting threads on stem and casing.
4. Mud viscosity should be monitored regularly, so that a minimal amount of mud is used when drilling within the aquifer rock.
5. Pit water and mud should be monitored on a continuous basis to anticipate any problems dealing with a possible overflow of unacceptable water or mud.
6. If there is an overflow from the mud pit, a discharge or dump site should have been pre-selected.
7. To insure a straight borehole, drill collars should be used.

8. The casing joints set above the Del Rio Clay should be loosely tack welded in an attempt to recover as much casing as possible.
9. Any mud cake should be thoroughly flushed out with fresh water or air before water sampling and only after casing is set. This will ensure the packer seal and shorten the amount of overall time to collect water samples by eliminating long periods of air jetting to clean up the selected depth intervals.
10. A final logging sweep should take place after the mud cake is flushed. This prohibits mud filtrate effects on geophysical logging.
11. "Super-Mud" should be further tested because of the speed associated with its drilling and minimal mud invasion effects. Its use should be limited to sites with adequate foam storage capabilities, and to sites where drilling begins in hard overburdens, such as the Austin Chalk, to minimize sloughing and to shorten jetting time.

Finally, future test well drilling in the Austin region should encompass (a) stressing the aquifer at the "bad water" line to examine the effects of pumpage on the movement of the line, (b) better delineate the Regional Dense Member of the Edwards Limestone, and (c) further examine the effects of the Dense member upon availability, water level fluctuations, and water quality.

## REFERENCES

- Abbott, P.L., 1973, The Edwards Limestone in the Balcones fault zone, south central Texas: The University of Texas at Austin, unpublished Ph.D. dissertation, Univ. Texas at Austin, 122 p.
- \_\_\_\_\_, 1975, On the Hydrology of the Edwards Limestone, south central Texas: *Journal of Hydrology*, V. 24.
- \_\_\_\_\_, 1976, Effects of Balcones faults on groundwater movement, south central Texas: *Texas Journal of Science*, V. 29.
- Baker, E.T., Jr., Slade, R.M., Jr., Dorsey, M.E., Ruiz, L.M., and Duffin, G.L., 1986, Geohydrology of the Edwards aquifer in the Austin area, Texas: Texas Water Development Board Report 293, 217 p.
- Brune, Gunnar, and Duffin, G.L., 1983, Occurrence, availability and quality of ground water in Travis County, Texas: Texas Department of Water Resources Report 276, 231 p.
- Guyton, William, F., and Associates, 1986, Drilling, construction, and testing of monitor wells for the Edwards aquifer bad water line experiment: Project cooperators – City Water Board of San Antonio, Edwards Underground Water District, Texas Water Development Board, and U.S. Geological Survey, 56 p.
- Kreitler, C. W., Senger, R. K., and Collins, E. W., 1987, Geology and hydrology of the northern segment of the Edwards aquifer, with an emphasis on the recharge zone in the Georgetown, Texas, area: Prepared for the Texas Water Development Board by the Bureau of Economic Geology, Contract Rept. IAC (86-87)- 1046, 115 p.
- Land, L.S. and Prezbindowski, D.P., 1981, The origin and evolution of saline formation water, Lower Cretaceous carbonates, south-central Texas: *Jour. of Hydrology*, v. 54, 51-74 p.
- Rose, P.R., 1968, Edwards Formation, surface and subsurface, central Texas: The University of Texas at Austin, unpublished Ph.D. dissertation.
- \_\_\_\_\_, 1972, Edwards Formation, surface and subsurface, central Texas: Bureau of Economic Geology, Report of Investigations No. 74, 198 p.
- St. Clair, A.E., 1979, Quality of water in the Edwards aquifer, central Travis County, Texas: The University of Texas at Austin, unpublished M.S. thesis.
- Senger, Rainer, and Kreitler, C.W., 1984, Hydrogeology of the Edwards aquifer, Austin area, central Texas: Bureau of Economic Geology, Report of Investigations No. 141, 35 p.
- Sieh, T. W., 1975, Edwards (Balcones Fault Zone) aquifer test well drilling investigation: Texas Water Development Board, Open File Rept., 117 p.
- Slade, R. M., Jr., Dorsey, M. E., and Stewart, L., 1986, Hydrology and water quality of the Edwards aquifer associated with Barton Springs in the Austin area, Texas: U.S. Geological Survey, Water Resource Investigations Report 86-4036, 117 p.
- Swanson, R.G., 1981, Sample examination manual: Shell Oil Company exploration training manual.
- Woodruff, C.M., Jr., and Slade, R.M., Jr., Hydrogeology of the Edwards aquifer – Barton Springs segment, Travis and Hays Counties, Texas: Austin Geological Society Guidebook No. 6.
- Woodruff, S. F., De la Garza, Laura, and Slade, R.M., Coordinators, 1985, Edwards aquifer northern segment, Travis, Bell Counties, Texas: Austin Geological Society Guidebook No. 8.



## **APPENDICES**



## Appendix I

### Descriptive Logs of Test Wells

#### Test Well 1 (58-50-603) (For well locations, see Figure 5)

| Interval<br>(Feet) | Formation                                     | Description   |
|--------------------|---|---|
| 0 - 1/2            |   | <u>Topsoil</u>  |
| 1/2 - 4            | Top of the Austin<br>Chalk at .5 feet         | <u>Limestone</u> , white to tan, soft to hard, oolitic, matrix III/A, sphericity .9, roundness .3 - .7, well sorted, hard streak at 4 ft.   |
| 4 - 41             |   | <u>Limestone</u> , gray to green, matrix II/III A, well sorted, chalky, some montmorillonite clay, calcitic content   |
| 41 - 60            |   | <u>Limestone</u> , gray-green, matrix II/III A, chalky to nodular, some argillaceous material (silt grade), well sorted   |
| 60 - 77            |   | <u>Limestone</u> , gray, matrix I/III A, oolitic, hard, well sorted, bentonitic seams, pyrite nodules, some amounts calcitic cementation  |
| 77 - 101           |   | <u>Limestone</u> , tan, hard, matrix III/A, oosparite to dismicrite, calcitic cementation, fossiliferous, pyrite, biosparite  |
| 101 - 122          |   | <u>Limestone</u> , gray, hard, matrix I/III A, well sorted, sphericity .7 - .9, roundness .5 - .9, well sorted, nodular toward bottom, carbonaceous, small amount of calcite, very hard at bottom       |
| 122 - 166          |   | <u>Limestone</u> , dark gray, hard, matrix I/III A, sphericity .5 - .7, roundness .1 - .3, mostly grainstone, some boundstone and compact crystalline material, limonite, pyrite, carboniferous sparite |
| 166 - 202          | Top of the Eagle<br>Ford Group at<br>166 feet | <u>Shale</u> , black claystone, matrix II/III A, montmorillonite, pyrite, small amounts of limestone near bottom, petroliferous   |
| 202 - 212          | Top of the Buda<br>Limestone at 202<br>feet   | <u>Limestone</u> , gray, hard, matrix I/III A, sphericity .5 - .7, roundness .3 - .5, well sorted, argillaceous, micrite matrix still some shale, pyrite, <u>Globigerina</u> , and calcispheres         |

## Appendix I--continued

### Descriptive Logs of Test Wells

#### Test Well 1 (58-50-603)

| Interval<br>(Feet)                  | Formation                                      | Description  |
|-------------------------------------|--|--|
| 212 - 240                           |  | <u>Limestone</u> , gray to some tan-orange (burnt), hard, matrix I/B, well sorted, bottom somewhat nodular   |
| 240 - 251                           | Top of the Del Rio<br>Clay at 240 feet         | <u>Clay</u> , gray-green, calcareous, matrix II/A, fossiliferous, approx. 50% kaolinite, 50% montmorillonite, pyrite, limonite in small percentage, small clams  |
| 251 - 300                           |  | same as above, but with some dark clay   |
| 300 - 301                           | Top of the Georgetown Limestone at<br>300 feet | <u>Limestone</u> , gray to white, hard, oosparite, matrix I/III A, nodular, calcite, pyrite, small amount of argillaceous wispy, mollusk biomicrite, <u>Globigerina</u> and calcispheres, glauconite   |
| <b><u>TOP OF CORED INTERVAL</u></b> |  |  |
| 301 - 311<br>(85% core recovered)   |  | <u>Limestone</u> (90%), dark gray to light gray, to white, texture is mostly compact crystalline to grainstone, matrix I B/C, vitreous, total porosity about 8 percent grainstone portion has .3 - .5 roundness and .7 - .9 sphericity, calcitic and pyritic throughout, some argillaceous micrite, mollusc shells, <u>Globigerina</u> , carbonaceous streaks<br><ul style="list-style-type: none"> <li>— 303 marly limestone, glauconitic material, small fissures</li> <li>— 303-1/2 marly limestone, carbonaceous</li> <li>— 303-1/2 to 306 lighter in color, mega-fossils</li> <li>— 306 large pyrite nodules</li> <li>— 308 fissures, carbonaceous, some moldic porosity</li> </ul> |
| 311 - 317<br>(60% core recovered)   |  | <u>Limestone</u> (70%), light gray to white, grainstone, matrix I/A, vitreous, total porosity about 6 percent, .7 - .9 sphericity, .3 - .5 roundness,<br><ul style="list-style-type: none"> <li>— 313 somewhat marly, dark gray</li> <li>— 315 same as above</li> </ul>  |
| 317- 320<br>(80% core recovered)    |  | <u>Limestone</u> (80%), light gray to white at base, grainstone, matrix I A/B, vitreous, total porosity about 6-8%, fractured and moldic porosity, calcitic and pyritic, shells<br><ul style="list-style-type: none"> <li>— 317 to 317-1/2 pitted surfaces</li> <li>— 318 mollusc fossils starting in slightly marly section</li> <li>— 318-1/2 shale and marl</li> <li>— 319 pyrite becoming abundant</li> <li>— 319-1/2 very dark gray-green shale</li> </ul>  |



## Appendix I--continued

### Descriptive Logs of Test Wells

#### Test Well 1 (58-50-603)

| Interval<br>(Feet)                 | Formation                                     | Description  |
|------------------------------------|---|--|
| 320 - 330<br>(100% core recovered) |   | <u>Limestone</u> , gray, grainstone, matrix I/A, resinous, sphericity .7 - .9, roundness .3 - .5, calcite and pyrite, marly lenses, fossils, surface pitted, total porosity about 8%<br>— 320 to 321 abundant fossils  |
| 330 - 340<br>(90% core recovered)  |   | <u>Limestone</u> , gray to white, mostly grainstone, matrix I A/B, total porosity about 8%, pyrite and calcite throughout, abundant fossils such as <u>Neospirifer</u> , <u>Exogy. arietina</u> , <u>Globigerina</u><br>— 336 fractured and moldic porosity<br>— 338 stromatolitic crusts  |
| 340 - 342<br>(100% core recovered) |   | same as above  |
| 342 - 350<br>(100% core recovered) | Top of the<br>Person Formation<br>at 342 feet | <u>Limestone and Dolomitic Limestone</u> , cream to buff, grainstone to compact crystalline, matrix I/III A/B, resinous to vitreous, .7 - .9 sphericity, .3 - .5 roundness, intramicrite and mollusc-fragment biomicrite, total porosity about 12%, calcitic, glauconitic<br>— 348-1/2 hydrocarbon shows<br>— 349-1/2 hydrocarbon shows<br>— 345 to 346-1/2 higher porosity, about 17% porosity  |
| 350 - 360<br>(100% core recovered) |   | <u>Limestone and Dolomitic Limestone</u> , cream to buff, grainstone to compact crystalline, matrix I/III A/B resinous to vitreous, .7 - .9 sphericity, .3 - .5 roundness, fossiliferous 15-20% porosity<br>— 357 mud-filled cavities, small vugs<br>— 358 extensive fossils, calcitic seams, total porosity about 10%, leached-mollusc dolomite<br>— 357 mud-filled cavities, small vugs<br>— 358 extensive fossils, calcitic seams, total porosity about 10%, leached-mollusc dolomite |
| 360 - 370<br>(100% core recovered) |   | <u>Limestone and Dolomitic Limestone</u> , tan to white, grainstone to compact crystalline, matrix I/III B/C, F-C, .5 - .7 sphericity, .1 - .3 roundness, total porosity about 15%, petroliferous, milliolid biomicrite  |

## Appendix I-continued

### Descriptive Logs of Test Wells

#### Test Well 1 (58-50-603)

| Interval<br>(Feet)                 | Formation | Description   |
|------------------------------------|-----------|---|
|                                    |           | <ul style="list-style-type: none"> <li>— 360 fossils, bivalves</li> <li>— 361 to 363-1/2 vugular, moldic porosity about 18%</li> <li>— 363-1/2 to 364-1/2 fossils</li> <li>— 367 petroliferous section</li> <li>— 368 calcitic fill fissures</li> <li>— 369 millinods, total porosity about 12%</li> </ul>  |
| 370 - 380<br>(100% core recovered) |           | <p><u>Limestone and Calcitic Dolomite</u>, light gray to cream, micrite microspar, matrix I/III A/B, sphericity .5 - .7, roundness .1 - .3, total porosity about 12%</p> <ul style="list-style-type: none"> <li>— 370 hard, dense calcitic deposits</li> <li>— 371-1/2 broken-up secondary porosity, about 15% porosity</li> <li>— 372 intraparticle</li> <li>— 373-1/2 somewhat marly, total porosity about 8%</li> <li>— 375 chalky</li> <li>— 376-1/2 calcite fissures, hard and dense material, total porosity about 8%</li> </ul>                                    |
| 380 - 390<br>(100% core recovered) |           | <p><u>Limestone</u>, dark gray to light gray, micrite to microspar, matrix I/III A-C, total porosity about 15%, chalky sections, calcitic, biosparite, cherty</p> <ul style="list-style-type: none"> <li>— 380 hard, dense, calcitic</li> <li>— 381-1/2 calcitic filled fissures, pyrite specs, total porosity about 8%</li> <li>— 382 calcitic, pyrite, solution channels, total porosity about 20%</li> <li>— 385-1/2 small vugs, pyrite, total porosity about 18%</li> <li>— 385-1/2 to 390 nodular, pyrite and stromatolithic crusts</li> </ul>                       |
| 390 - 400<br>(90% core recovered)  |           | <p><u>Limestone</u>, light gray to white, micrite to microspar, matrix I/III A-B, total porosity about 12%, sparry calcite deposits, secondary porosity, carboniferous, soft mud lumps, somewhat marly</p> <ul style="list-style-type: none"> <li>— 390 hard, dense pitted surface</li> <li>— 392-1/2 vugular, total porosity about 15%</li> <li>— 393 marly</li> <li>— 395 secondary porosity, sparry fractured, stromatolithic crusts, total porosity about 15%, lithoclasts</li> <li>— 396 chalky</li> <li>— 397 marly</li> <li>— 399 chalky, fossiliferous</li> </ul> |

## Appendix I-continued

### Descriptive Logs of Test Wells

#### Test Well 1 (58-50-603)

| Interval<br>(Feet)                 | Formation                                    | Description   |
|------------------------------------|--|---|
| 400 - 410<br>(100% core recovered) |  | <p><u>Limestone and Dolomitic Limestone</u>, same as above but with some wispiness</p> <ul style="list-style-type: none"> <li>— 406 dolomitic, vugular, mud filled</li> <li>— 408 fracture, total porosity about 20%</li> <li>— 409 to 410 wispy unit, very dense</li> </ul>  |
| 410 - 420<br>(85% core recovered)  |  | <p><u>Limestone and Dolomitic Limestone</u>, gray to tan to cream, micrite to microspar, matrix I/III A-B, sparry calcite-filled voids, crossbedding</p> <ul style="list-style-type: none"> <li>— 410 to 413 hard, dense, fine interbedding</li> <li>— 413 to 414 dolomitic lithoclasts</li> <li>— 414 to 414-1/2 cherty with fractures</li> <li>— 414-1/2 to 415-1/2 cross bedding</li> <li>— 415-1/2 to 419 dolomitic, vugular, carbonaceous lenses, calcitic seams</li> </ul>  |
| 420 - 430<br>(100% core recovered) |  | <p><u>Limestone and Dolomitic Limestone</u>, dark brownish-gray to cream, micrite, matrix I/III B-C, fossiliferous, carboniferous</p> <ul style="list-style-type: none"> <li>— 420 reworked material</li> <li>— 420 to 421-1/2 hard, dense limestone, carbonaceous</li> <li>— 421-1/2 to 424-1/2 hard, dense, cross bedding, carbonaceous, wispy structure, some pitted and moldic porosity near bottom. Calcite</li> <li>— 424-1/2 to 425 hard, dense, cross bedding</li> <li>— 425 to 426-1/2 hard, dense, crystalline carbonate, dolomitic lithoclasts, carbonaceous lenses</li> <li>— 426-1/2 to 427 cross bedding, wispy, carbonaceous</li> <li>— 427 to 430 gray, vuggy, flaggy, broken up. Secondary porosity not uniform</li> </ul> |
| 430 - 440<br>(100% core recovered) | Top of the Regional Dense Member at 430 feet | <p><u>Limestone</u>, dark to light gray, matrix I/A, argillaceous and wispy, dense, nodular in places, cross bedding. fossiliferous</p> <ul style="list-style-type: none"> <li>— 430 to 430-1/2 same as above</li> <li>— 430-1/2 to 437-1/2 cross bedded limestone, sparfilled fractures</li> <li>— 437-1/2 to 440 cross bedded, marly, nodular limestone and mud clasts</li> </ul>   |

## Appendix I-continued

### Descriptive Logs of Test Wells

#### Test Well 1 (58-50-603)

| Interval<br>(Feet)                 | Formation   | Description  |
|------------------------------------|---|--|
| 440 - 450<br>(100% core recovered) |   | <u>Limestone</u> , light gray to cream, matrix I/A, hard, compact, wispy micrite, carbonaceous. Oysters, calcitic<br>— 440 to 444 oysters and <u>Toucasia</u> scattered  |
| 450 - 460<br>(100% core recovered) | Base of the Regional Dense Member and the Top of the Kainer Formation at 450 feet | <u>Limestone and Dolomitic Limestone</u> , light gray to tan to brown, matrix I/III A, grainstone to crystalline carbonate, bio-micrite matrix, wispy and carbonaceous, sparry calcite filled fractures<br>— 450 to 451 hard, dense gray limestone with calcitic seams<br>— 451 to 452-3/4 finely bedded limestone, nodular patches, chert, carbonaceous at bottom<br>— 452-3/4 to 454 hard, dense wispy limestone<br>— 454 to 456-1/2 slightly dolomitic, brownish limestone, secondary porosity, calcite-filled fissures and fractures, matrix III A, grainstone<br>— 456-1/2 to 458-1/4 tan, vuggy limestone, wispy, carbonaceous lens at bottom<br>— 458-1/4 to 460 hard, dense limestone, large millolid biomicrite |
| 460 - 470<br>(95% core recovered)  |   | <u>Limestone and Dolomitic Limestone</u> , gray to brownish-gray, matrix I/III A-B, grainstone to crystalline carbonate, spar, crystalline vugs and fractures, cherty, wispy structure and oysters<br>— 460 to 461 same as above, with sparry calcite growths, hard, dense<br>— 461 to 462-1/2 broken up, slightly vuggy, large stromatolitic crust, laminated micrite, collapsed cracks, carbonaceous and cherty at bottom<br>— 462 to 464 hard, dense dolomitic limestone, cherty nodules<br>— 464 to 470 hard, crystalline dolomitic limestone, micrite, wispy fractures  |

## Appendix I-continued

### Descriptive Logs of Test Wells

#### Test Well 1 (58-50-603)

| Interval<br>(Feet)                 | Formation | Description  |
|------------------------------------|-----------|--|
| 470 - 480<br>(100% core recovered) |           | <p><u>Limestone</u>, light to medium brown, medium grained grainstone, well sorted, intra-sparite, matrix I/III B, slightly dolomitic, some biomicrite, cherty in places</p> <ul style="list-style-type: none"> <li>— 470 to 470-1/2 same as above</li> <li>— 470-1/2 to 473 pitted vuggy limestone, fracturing</li> <li>— 473 to 473-1/2 carbonaceous, vuggy, current laminated unit</li> <li>— 473-1/2 to 475-1/2 slightly vuggy, nodular limestone</li> <li>— 475-1/2 to 476-1/2 cross bedding, carbonaceous, breccia at top</li> <li>— 476-1/2 to 478 granular, vuggy limestone, calcitic</li> <li>— 478 to 478-1/2 sparry calcite-filled vugs, lithoclastic</li> <li>— 478-1/2 to 479 finely bedded, slightly nodular</li> <li>— 479 large chert nodule</li> <li>— 480 vuggy limestone</li> </ul> |
| 480 - 490<br>(85% core recovered)  |           | <p><u>Limestone and Dolomitic Limestone</u>, brownish gray, matrix III A-B, micritic, vuggy at top, calcite</p> <ul style="list-style-type: none"> <li>— 480 to 486 dolomitic, very vuggy, fossiliferous, cherty, large crystal patterns, gypsum crystal</li> <li>— 486 to 490 finer limestone, large crystal lithoclasts</li> </ul>   |
| 490 - 500<br>(100% core recovered) |           | <p><u>Limestone</u>, brownish gray, grainstone, matrix I/III A-B, wispy and current laminated bottom third, micritic, vuggy and moldic porosity</p> <ul style="list-style-type: none"> <li>— 490 to 497-1/2 interparticle, vuggy and moldic porosity, calcite</li> <li>— 497-1/2 to 498 gray limestone, hard, dense</li> <li>— 498 to 499 fractures, wispy</li> <li>— 499 to 500 very fine, hard, dense</li> </ul>   |
| 500 - 510<br>(95% core recovered)  |           | <p><u>Limestone and Dolomite</u>, tan to brownish gray, grainstone to compact crystalline, matrix III B-C, sparry calcite, micrite in some places, secondary porosity, moldic porosity</p> <ul style="list-style-type: none"> <li>— 500 to 501 wispy</li> <li>— 501 to 503 dolomitic, vuggy, total porosity about 15%</li> <li>— 503 to 503-1/2 nodular, carboniferous, total porosity about 10%</li> <li>— 503-1/2 to 510 collapsed features, breccia, spar-filled vugs and fractures, large crystalline growth, total porosity about 25%</li> </ul>  |

## Appendix I-continued

### Descriptive Logs of Test Wells

#### Test Well 1 (58-50-603)

| Interval<br>(Feet)                 | Formation | Description  |
|------------------------------------|-----------|--|
| 510 - 520<br>(100% core recovered) |           | <p><u>Limestone and Dolomitic Limestone</u>, tan to gray, grainstone to compact crystalline, matrix III/B-C, calcitic fillings, vuggy</p> <ul style="list-style-type: none"> <li>— 510 to 510-1/2 dense, wispy, carbonaceous, total porosity about 8%</li> <li>— 510-1/2 to 514 vuggy, total porosity about 2%</li> <li>— 514 to 516 dense again</li> <li>— 516 to 518 dolomitic limestone, sparry calcite, total porosity about 25%</li> <li>— 518 to 519-1/2 pitted surface total porosity about 12%</li> <li>— 519-1/2 to 520 vuggy, total porosity about 17%</li> </ul>  |
| 520 - 530<br>(100% core recovered) |           | <p><u>Limestone</u>, tan to brownish, grainstone to compact crystalline, matrix III/B-C, some dolomite, granular, calcitic</p> <ul style="list-style-type: none"> <li>— 520 to 522-1/2 vuggy, total porosity about 20%</li> <li>— 522-1/2 to 525 dense, pitted, total porosity about 15%</li> <li>— 525 to 525-1/2 calcitic seams</li> <li>— 525-1/2 to 527 vuggy, carbonaceous, total porosity about 22%</li> <li>— 527 to 528-1/2 total porosity about 17%</li> <li>— 528-1/2 to 530 same as above</li> </ul>  |
| 530 - 540<br>(100% core recovered) |           | <p><u>Limestone</u>, brown to tan, grainstone to compact crystalline, micrite to microspar, matrix I/III A-C, carbonaceous, wispy, cherty lithoclasts</p> <ul style="list-style-type: none"> <li>— 530 to 530-1/2 vuggy, total porosity about 20%</li> <li>— 530-1/2 to 532 crystalline, secondary porosity, total porosity about 15%</li> <li>— 532 to 532-1/2 pitted</li> <li>— 532-1/2 to 533 wispy, total porosity about 12%</li> <li>— 533 to 536 lithoclasts, crystalline growth, total porosity about 8%</li> <li>— 536 to 538 breccia, total porosity about 8%</li> <li>— 538-539 wispy</li> <li>— 539-540 vuggy, about 15%</li> </ul> |
| 540 - 550<br>(60% core recovered)  |           | <p><u>Limestone</u>, tan to brownish gray, grainstone to compact crystalline, matrix I/III B-C, some carbonaceous streaks, somewhat wispy</p> <ul style="list-style-type: none"> <li>— 540 to 543 crystalline growth, secondary total porosity about 15%</li> <li>— 543 to 547 wispy and carbonaceous</li> </ul>   |

**Appendix I-continued**

**Descriptive Logs of Test Wells**

**Test Well 1 (58-50-603)**

| Interval<br>(Feet)         | Formation | Description                  | Elevation<br>(Feet) |
|----------------------------|-----------|------------------------------|---------------------|
| 550 - 560<br>(no recovery) |           | LOST CIRCULATION at 548 feet | 5 - 0               |
|                            |           |                              | 4 - 0               |
|                            |           |                              | 18 - 0              |
|                            |           |                              | 701 - 00            |
|                            |           |                              | 191 - 000           |
|                            |           |                              | 145 - 001           |
|                            |           |                              | 122                 |
|                            |           |                              | -00                 |
|                            |           |                              | -00                 |
|                            |           |                              | -11                 |

## Appendix I-continued

### Descriptive Logs of Test Wells

#### Test Well 2 (58-58-213)

| Interval (Feet) | Formation                                  | Description  |
|-----------------|--|--|
| 0 - 3           |  | <u>Topsoil</u> , very black, sandy, rich   |
| 3 - 9           | Top of the Navarro/Taylor Groups at 3 feet | <u>Clay</u> , tan to orange in color, ( Pecan Gap), sandy, VF*   |
| 9 - 42          |  | <u>Clay</u> , tan to orange, marly, granular calcite in a clay matrix. Montmorillonite.  |
| 42 - 135        |  | Color change from tan to orange to gray, Ozan or Sprinkle Formation. Calcareous, montmorillonite, some glauconite, calcite fragments, pyrite nodules |
| 135 - 140       | Top of the Austin Chalk at 135 feet        | <u>Limestone</u> , oolitic, gray, matrix I/A, clay, montmorillonite, "chalk"   |
| 140 - 255       |  | <u>Limestone</u> , gray, matrix I/A, calcareous, montmorillonite clay. Micritic-sparite, carboniferous   |
| 255 - 289       |  | <u>Limestone</u> , oolitic, hard gray, matrix I/A, more argillaceous at 280 feet   |
| 289 - 390       |  | <u>Limestone</u> , marly, gray, matrix I/A, argillaceous   |
| 390 - 412       | Top of the Eagle Ford Group at 390 feet    | <u>Shale</u> , black claystone, montmorillonite clay, carboniferous  |
| 412 - 424 1/2   |  | <u>Shale</u> , black claystone, hard, blue montmorillonite clay, carboniferous material, calcitic, some light gray limestone oolithi, soft           |
| 424 1/2-431     | Top of the Buda Limestone at               | <u>Limestone</u> , hard, gray, matrix I/A, argillaceous, micritic, some shale, black claystone, matrix II/A, soft                                    |
| 431 - 445       |  | <u>Limestone</u> , hard, compact, gray, matrix I/A, argillaceous, micrite, pyrite, some "burnt orange" limestone                                     |
| 445 - 465       |  | <u>Limestone</u> , hard, gray, matrix I/A, micritic, some orange pieces, well sorted   |
| 465 - 467       | Top of the Del Rio Clay at 465 feet        | <u>Shale</u> , dark gray to black, carbonaceous, limonite, clay petroliferous. Blue shale bits, kaolinite  |
| 467 - 469       |  | Same as above  |

\* *Note* – abbreviations are as follows: *VC* – very coarse; *C* – coarse; *F* – fine; *VF* – very fine; *XF* – extremely fine



## Appendix I-continued

### Descriptive Logs of Test Wells-

#### Test Well 2 (58-58-213)

| Interval<br>(Feet) | Formation                                   | Description   |
|--------------------|---|---|
| 469 - 477          |   | <u>Shale</u> , calcareous, gray-green to black, granular, matrix I/A, pyrite  |
| 477 - 500          |   | <u>Shale</u> , 80%, calcareous, soft gray-green, matrix II/A, VF, mostly kaolinite, mostly kalonite clay, montmorillonite, limonitic, some pyrite, 10% dark brown to yellow         |
| 500 - 515          |   | <u>Clay</u> 100%, calcareous, soft, gray to dark gray, matrix II/A, VF, mostly kaolinite. Limonite, some pyrite, 10% dark brown to yellow clay, montmorillonite                     |
| 515 - 525          | Top of the Georgetown Limestone at 515 feet | <u>Limestone</u> , 80%, hard, light gray, matrix I/A, VF-F, compact crystalline carbonate to grainstone, oosparite, compact, argillaceous, micrite, carbonaceous streaks, mud lumps |
| 525 - 527          |   | <u>Limestone</u> , dark gray to light gray to white, hard grainstone to crystalline carbonate, matrix I/A, argillaceous micrite   |
| 527 - 550          |   | <u>Limestone</u> , marly, gray to white, matrix I/A, grainstone to mudstone, pieces of calcite  |
| 550 - 553          |   | <u>Limestone</u> , marly, gray with some buff to tan-colored mudstone pieces, matrix I/III A/B  |
| 553 - 565          |   | <u>Limestone</u> , cream to buff in color, matrix I/III A/B, marly (mudstone to grainstone), calcitic, carboniferous, micrite matrix, soft mudlumps, molluse biomicrite             |
| 565 - 572          | Top of the Person Formation at 565 feet     | <u>Limestone and Dolomitic Limestone</u> , brownish, matrix III B/C, dolomitic, micraite to microspar, sparry calcite, soft mud lumps, breccia                                      |
| 572 - 602          |   | <u>Limestone</u> , gray to white, matrix I/III A/B, mudstone to mostly grainstone, spar, microspar, micrite, somewhat marly pieces, carbonaceous, limonite                          |
| 602 - 622          |   | <u>Limestone and Dolomitic Limestone</u> , grayish brown, matrix I/III A/B, biosparite/biomicrite   |
| 622 - 660          |   | <u>Limestone and Dolomitic Limestone</u> , brownish-gray, matrix I/III A/B, coarse grainstone, biomicraite, sparry calcite, calcitic  |

## Appendix I-continued

### Descriptive Logs of Test Wells

#### Test Well 2 (58-58-213)

| Interval (Feet) | Formation   | Description  |
|-----------------|---|--|
| 660 - 667       | Top of the Regional Dense Member at 660 feet                                      | <u>Limestone</u> , dark gray to cream with some tan/orange, argillaceous marly limestone I/A, grainstone, intramicrite, marl and shale lenses, some hard white streaks present                   |
| 667 - 677       |   | <u>Limestone</u> , blue gray, matrix I/A, grainstone, some shale, blue to tan and brown argillaceous/marly limestone, calcitic pieces present  |
| 677 - 683       |   | <u>Limestone</u> , marly, multicolored gray to tan, matrix I/A, argillaceous, fragments of shells, clasts  |
| 683 - 730       | Base of the Regional Dense Member and the Top of the Kainer Formation at 683 feet | <u>Limestone and Dolomitic Limestone</u> , mostly brownish-gray/grayish-brown, matrix I/III B, grainstone, intrasparite, some micrite matrix   |
| 730 - 750       |   | Missed cuttings  |
| 750 - 760       |   | <u>Limestone</u> , grayish-brown, matrix I/III A/B, micrite, soft mud lumps, wispy, granular, carbonaceous, almost marly   |
| 760 - 777       |   | <u>Limestone</u> , gray, matrix I/III A/B, grainstone to compact crystalline, intrasparite, calcitic   |
| 777 - 793       |   | <u>Limestone and Dolomitic Limestone</u> , grayish-brown, matrix I A/B, compact crystalline (80%) to small grainstone (20%), intrasparite, calcitic, tan soft mud lumps                          |
| 793 - 799       |   | <u>Limestone</u> , gray to brown, marly, matrix I/III A/B, well sorted, mostly grainstone to compact crystalline, micrite matrix, intrasparite, somewhat argillaceous and shaley (blue in color) |
| 799 - 805       |   | <u>Limestone</u> , gray to brown, marly, matrix I/III A/B, micrite, calcitic, slightly argillaceous, some blue-gray shale  |
| 805 - 823       |   | <u>Limestone and Dolomitic Limestone</u> , dark gray to brown, marly, matrix I/III A/B, micrite, gypsum and anhydrite crystals, calcitic, some silty red weathred material                       |
| 823 - 833       |   | Missed cuttings  |

## Appendix I-continued

### Descriptive Logs of Test Wells

#### Test Well 2 (58-58-213)

| Interval<br>(Feet) | Formation | Description   |
|--------------------|-----------|---|
| 833 - 840          |           | <u>Limestone</u> , dark gray to brown, matrix I/III A/B, micrite matrix, weathered material   |
| 840 - 841          |           | <u>Dolomitic Limestone</u> , dark gray to white, matrix I/III A/B, intrasparite, anhydrite crystals, residual weathered material  |
| 841 - 843          |           | <u>Limestone</u> , grayish brown, hard, grainstone to to compact crystalline, matrix I/III A/C, well sorted, micritic   |
| 843 - 850          |           | <u>Dolomitic Limestone</u> , grayish-brown, grainstone to compact crystalline, matrix I/III A/B, intrasparite, well sorted  |
| 850 - 865          |           | <u>Dolomitic Limestone</u> , light grayish-brown to tan, grainstone to compact crystalline, matrix III/A/B, intrasparite, well sorted, calcitic, cherty                   |
| 865 - 875          |           | <u>Limestone and Dolomitic Limestone</u> , light grayish-brown, hard, matrix III A/B, intrasparite, well sorted anhydrite   |
| 875 - 885          |           | <u>Dolomitic Limestone</u> , brownish-gray, medium grained, matrix III A/B, well sorted, coated aggregates, slightly micritic, stromatolithic crusts, anhydrite, dolomite |

## Appendix I-continued

### Descriptive Logs of Test Wells

#### Test Well 3 (58-42-927)

| Interval (Feet) | Formation                            | Description  |
|-----------------|--------------------------------------|--|
| 0 - 4           |                                      | <u>Topsoil</u> , dark, rich, some small amounts of clay  |
| 4 - 8           |                                      | <u>Marl, Sand, and Clay</u> , tan to light brown, very clayey, maybe some alluvium, silty and with some gravel, siliceous, cherty  |
| 8 - 13          | Top of the Austin Chalk at 8 feet    | <u>Limestone</u> , tan to white, oolitic, hard, matrix I/A, slightly nodular   |
| 13 - 16         |                                      | <u>Limestone</u> , gray-green, some tan, matrix I/II, hard oolitic, calcareous, chalky   |
| 16 - 30         |                                      | <u>Limestone</u> , gray, matrix I/III A, medium to hard, oosparite, chalky   |
| 30 - 45         |                                      | <u>Limestone</u> , gray to white, matrix I/III A, chalky, micritic   |
| 45 - 51         |                                      | <u>Limestone</u> , dark gray to some orange-tan, matrix I/III A, slightly argillaceous, calcitic, micritic/oolitic   |
| 51 - 62         | Top of the Eagle Ford Group at 51    | <u>Shale</u> , greenish-black claystone, montmorillonitic clay, pyritic, very carboniferous and petroliferous  |
| 62 - 68         |                                      | <u>Shale</u> , greenish-black claystone, some montmorillonite gray clay, carboniferous and petroliferous, somewhat silty in makeup   |
| 68 - 91         |                                      | <u>Shale</u> , black claystone, montmorillonitic clay, some tan to orange limestone (2%), very carbonaceous with hydrocarbon shows   |
| 91 - 96         | Top of the Buda Limestone at 91 feet | <u>Limestone</u> , gray to mostly white with some pale orange bits, matrix I/A, micritic, glauconitic, pyritic, very hard, still some black claystone (5), <u>Globigerina</u>              |
| 96 - 106        |                                      | <u>Limestone</u> , tan to pale orange, matrix I/A, micrite matrix, glauconitic, slightly pyritic, extremely hard, nodular, well sorted, about 2% black claystone                           |
| 106 - 122       |                                      | <u>Limestone</u> , white with some pale orange, matrix I/A, micrite, well sorted   |
| 122 - 125       |                                      | <u>Limestone</u> , gray to dark gray with some larger pieces or pale orange cuttings, matrix I/A, micritic, well sorted, fine cuttings, some shale (black) bits with strong odor, calcitic |

## Appendix I-continued

### Descriptive Logs of Test Wells

#### Test Well 3 (58-42-927)

| Interval (Feet) | Formation  | Description  |
|-----------------|--|--|
| 125 - 129       |  | <u>Limestone</u> , soft, gray to dark gray, matrix I/III A, argillaceous   |
| 129 - 132       |  | Missed cuttings  |
| 132 - 148       | Top of the Del Rio Clay at 130 feet                              | <u>Clay</u> , gray-green to bluish, matrix I/A, silty to clay, kaolinite and montmorillonite, calcareous, gypsiferous                  |
| 148 - 164       |  | <u>Clay</u> , dark gray to black, matrix I/A, siltstone, some bits of pale orange limestone, limonite pyrite                           |
| 164 - 167       |  | <u>Clay</u> , grayish-blue, matrix I/A, calcareous   |
| 167 - 187       |  | <u>Clay</u> , kaolinitic with some montmorillonite, calcareous, mostly grayish-blue, some brownish-gray                                |
| 187 - 191       |  | <u>Clay</u> , kaolinitic, white to gray, matrix I/A, slightly silty, small bits of limestone (2%)                                      |
| 191 - 203       | Top of the Georgetown Limestone at 191 feet                      | <u>Limestone</u> , white to medium gray, matrix I/A, hard packstone to crystalline carbonate, calcitic, micrite matrix, slightly marly |
| 203 - 211       |  | <u>Limestone</u> , light gray to medium, matrix I/A, micrite, argillaceous, hard, compact, mostly packstone                            |
| 211 - 220       |  | <u>Limestone</u> , light to dark gray, matrix I/A, very marly, soft, bits of hard tan streaks  |
| 220 - 227       |  | <u>Limestone</u> , gray, matrix I/A, hard, compact micrite matrix, well sorted, some blue-green clay, slightly limey, argillaceous     |
| 227 - 250       | Top of the Person Formation at 227 feet                          | <u>Limestone</u> , mostly gray (60%) to tan/brownish gray (40%), matrix I/III A, hard, compact, well sorted biomicrite                 |
| 250 - 275       |  | <u>Limestone</u> , brownish gray (60%) to white (40%), dolomitic, matrix I/III A, micrite, well sorted, calcitic                       |
| 275 - 280       | Top of the Kiamichi Formation/ Regional Dense Member at 275 feet | <u>Limestone &amp; Dolomite</u> , tan to white, matrix I/A, hard, well sorted, micritic, limonite, white, maybe gypsum                 |

## Appendix I-continued

### Descriptive Logs of Test Wells

#### Test Well 3 (58-42-927)

| Interval<br>(Feet) | Formation                                     | Description  |
|--------------------|---|--|
| 280 - 283          |   | <u>Limestone</u> , tan to white, matrix I/III A, dolomitic, hard, well sorted, calcitic, packstone   |
| 283 - 293          |   | <u>Limestone</u> , dark gray to tan, matrix I/III A, hard, well sorted, micrite, calcitic. Packstone to crystalline carbonate                                  |
| 293 - 300          |   | <u>Limestone</u> , dark gray (75%) to white (20%) to tan (5%), matrix III/A, dolomitic, biomicrite, coarse grained, somewhat argillaceous                      |
| 300 - 305          |   | <u>Dolomitic Limestone</u> , gray to tan with dark brown mud lumps, matrix III/A, biomicrite, hard, well sorted, argillaceous                                  |
| 305 - 310          |   | <u>Limestone</u> , dark brown to gray, matrix III/A, hard, well sorted, micrite, some brown mud lumps  |
| 310 - 315          |   | <u>Limestone</u> , dark gray, matrix III/A-C, well sorted, biomicrite, limonite, calcitic, soft mud lumps, slightly argillaceous                               |
| 315 - 320          | Top of the Kainer<br>Formation at<br>315 feet | <u>Limestone</u> , tan to orange, matrix I/III A-B, well sorted, mudstone to packstone, calcitic, shell material   |
| 320 - 322          |   | <u>Dolomitic Limestone</u> , brownish gray to gray, matrix III/A, micritic, well sorted, coarse  |
| 322 - 325          |   | <u>Dolomitic Limestone</u> , tan, matrix III/A, well sorted, micritic  |
| 325 - 335          |   | Missed cuttings  |
| 335 - 340          |   | <u>Limestone Dolomite</u> , tan to white, matrix I/III A-B, grainstone to compact crystalline, biomicritic   |
| 340 - 351          |   | <u>Dolomitic Limestone</u> , dark brown to tan, matrix III/A, medium to hard, boundstone to compact crystalline, calcitic, biomicritic                         |
| 351 - 360          |   | <u>Limestone</u> , white to tan to gray, matrix I/III A-C, medium to hard, boundstone to compact crystalline, F-XF, somewhat cherty, argillaceous              |
| 360 -363           |   | <u>Limestone</u> , brown to tan, matrix I/III A-C, biomicrite, compact crystalline, fine cuttings, some gypsum, dolomite, anhydrite, microspar, some celestite |

## Appendix I-continued

### Descriptive Logs of Test Wells

#### Test Well 3 (58-42-927)

| Interval<br>(Feet) | Formation | Description   |
|--------------------|-----------|---|
| 363 - 377          |           | <u>Limestone and Dolomite</u> , tan to brown, matrix I/III A, micrite, compact crystalline to grainstone, well sorted, large dolomite crystals  |
| 377 - 400          |           | <u>Limestone and Dolomite</u> , brown to tan to white, matrix I/III A, biomicrite to microspar, compact crystalline, stromatolitic crusts, large dolomite crystals, anhydrite                               |
| 400 - 416          |           | <u>Limestone</u> , tan to white, matrix I/III A-B, micrite, well sorted, some dolomite  |
| 416 - 418          |           | <u>Dolomite and Dolomitic Limestone</u> , tan to brownish gray, matrix III/A, micrite to biomicrite, well sorted, lots of gypsum, calcium and dolomite crystals, stromatolitic                              |
| 418 - 420          |           | <u>Dolomite</u> , dark brown crystals, some gypsum  |
| 420 - 428          |           | <u>Dolomitic Limestone</u> , brown to tan, matrix I/III A-B, packstone to compact crystalline, micritic, some chert   |
| 428 - 430          |           | <u>Dolomitic Limestone</u> , tan to white, matrix III/A-C, micrite, well sorted, gypsum, some weathered material (red silt)   |
| 430 - 434          |           | <u>Limestone</u> , tan to cream, matrix I/III A-B, biomicrite, fine cuttings, packstone to compact crystalline, shale streaks, cherty   |
| 434 - 436          |           | <u>Chert and Gypsum Nodules</u>   |
| 436 - 452          |           | <u>Limestone and Dolomitic Limestone</u> , brown to gray to tan, matrix I/III A-C, micrite and biosparite, packstone to compact crystalline, some blue-gray argillaceous material, gypsum, chert            |
| 452 - 482          |           | <u>Limestone and Dolomitic Limestone</u> , tan to white to brownish gray, matrix III A, pack stone to compact crystalline, well sorted, biomicrite to biosparite, calcitic, large dolomite crystals, gypsum |
| 482 - 490          |           | Same as above, with some hard crystalline streaks   |
| 490 - 520          |           | <u>Limestone and Dolomitic Limestone</u> , gray to brownish gray, matrix I/III A, packstone to boundstone, fine cuttings, some argillaceous material, gypsum  |

## Appendix I-continued

### Descriptive Logs of Test Wells

#### Test Well 3 (58-42-927)

| Interval<br>(Feet) | Formation | Description  |
|--------------------|-----------|--|
| 520 - 526          |           | <u>Limestone and Dolomitic Limestone</u> , white to tan, hard, matrix I/III A, micrite, packstone to boundstone, somewhat argillaceous, gypsum, pale yellow nodular bits |
| 526 - 545          |           | <u>Dolomitic Limestone</u> , tan to brownish gray, matrix III/A, biosparite, packstone to compact crystalline, large crystal growth                                      |
| 545 - 561          |           | <u>Dolomitic Limestone</u> , white to tan to brownish gray, matrix III/A, micrite and biosparite, medium to hard, sucrosic, some gypsum                                  |
|                    |           | Well drilling discontinued due to obstruction, possibly chert nodule   |



## Appendix I-continued

### Descriptive Logs of Test Wells

#### Test Well 4 (58-36-503)

| Interval (Feet) | Formation                                   | Description   |
|-----------------|---|---|
| 0 - 6           |   | <u>Topsoil</u> , marly, calcareous, calcitic (only slightly), "Sprinkle Formation"  |
| 6 - 8           | Alluvial Cap                                | <u>Caliche</u> , flintrock, gravel, silt and clay, chert and quartz   |
| 8 - 10          |   | <u>Caliche</u> , flintrock, gravel, silt and clay, chert and quartz   |
| 10 - 21         | Top of the Navarro/Taylor Groups at 12 feet | Missed cutting  |
| 21 - 35         |   | <u>Clay</u> , tan to orange, calcareous, montmorillonite, silty quartz, calcite fragments                                   |
| 35 - 50         |   | <u>Clay</u> , grayish orange to dark gray, calcareous, montmorillonite, calcite bits, few phosphate nodules, slightly marly |
| 50 - 65         |   | <u>Clay</u> , grayish green, marly, calcareous, some glauconite, calcite fragments  |
| 65 - 70         |   | <u>Clay</u> , grayish green, marly, calcareous, some glauconite, calcite fragments  |
| 70 - 90         |   | <u>Clay</u> , grayish green, marly, calcareous, some glauconite, calcite fragments  |
| 90 - 100        |   | <u>Clay</u> , grayish green, calcareous, mostly montmorillonite, but some glauconite, calcite fragments                     |
| 100 - 122       |   | <u>Clay</u> , grayish green, calcareous, mostly montmorillonite, but some glauconite, calcite fragments                     |
| 122 - 135       | Top of the Austin Chalk at 122 feet         | <u>Limey Marl</u> , light gray, oolitic, matrix IIA/III, about 3% porosity, very sandy, some montmorillonite clay, calcitic |
| 135 - 150       |   | <u>Chalk</u> , grayish white, oolitic, matrix II/A, 1-2% porosity, fissile, calcareous, calcitic                            |
| 150 - 185       |   | <u>Chalk</u> , grayish white, oolitic, matrix II/A, 1-3% porosity, fissile, calcareous, calcitic                            |
| 185 - 200       |   | <u>Chalk</u> , grayish white, oolitic, matrix II/A, 1-3% porosity, fissile, calcareous, calcitic, more marly                |

## Appendix I-continued

### Descriptive Logs of Test Wells

#### Test Well 4 (58-36-503)

| Interval<br>(Feet) | Formation                               | Description   |
|--------------------|---|---|
| 200 - 215          |   | <u>Limestone</u> , gray, oolitic packstone, matrix I/A, calcareous, micritic  |
| 215 - 265          |   | No cuttings   |
| 265 - 340          |   | <u>Limestone</u> , gray, oolitic packstone, matrix I/A, calcareous, micritic  |
| 340 - 350          |   | <u>Limestone</u> , gray-dark gray, oolitic, medium hard, matrix I/IIIA, micrite, calcareous, some pyrite  |
| 350 - 360          |   | <u>Limestone</u> , white to gray, marly, matrix IA/IIIA, calcareous, pyrite micritic  |
| 360 - 400          |   | No cuttings   |
| 400 - 420          |   | <u>Limestone</u> , white to gray, oolitic, matrix IA/IIIA, calcareous, micritic   |
| 420 - 460          |   | <u>Limestone</u> , gray to white, oolitic, marly and soft, matrix III/A, calcareous, pyrite   |
| 460 - 480          |   | <u>Limestone</u> , white to gray, oolitic, medium to hard, matrix IA/IIIA, calcareous, micritic, bentonitic, some pyrite, carboniferous                 |
| 480 - 530          |   | No cuttings   |
| 530 - 563          |   | <u>Limestone</u> , gray to dark gray, oolitic, hard, matrix I/IIA, 1-3% porosity, calcitic seams indicating fracturing, micritic, carboniferous, pyrite |
| 563 - 580          | Top of the Eagle Ford Group at 563 feet | <u>Shale</u> , black to olive-black, claystone, silty, matrix II/IIIA, compact  |
| 580 - 601          |   | <u>Shale</u> , black to olive-black, claystone to siltstone, flaggy, carboniferous  |
| 601 - 625          | Top of the Buda Limestone at 601 feet   | <u>Limestone</u> , light gray, hard, matrix I/A, argillaceous micrite, pyrite   |
| 625 - 636          |   | <u>Limestone</u> , light gray, hard, matrix I/A, calcitic, micritic, slightly marly in spots  |

## Appendix I-continued

### Descriptive Logs of Test Wells

#### Test Well 4 (58-36-503)

| Interval (Feet) | Formation                                   | Description   |
|-----------------|---|---|
| 636 - 671       | Top of the Del Rio Clay at 636 feet         | <u>Clay</u> , dark gray to dark brownish-gray, wispy and granular, calcareous and slightly shaley, matrix I/A, a lot of pyrite  |
| 671 - 695       |   | <u>Clay</u> , gray green to black, very soft, kaolinite, limonite   |
| 695 - 704       |   | <u>Clay</u> , gray green to black, slightly shaley, wispy and carbonaceous  |
| 704 - 714       | Top of the Georgetown Limestone at 704 feet | No cuttings coming up, drilled very hard at 704 feet (basis for pick)   |
| 714 - 724       |   | No cuttings   |
| 724 - 734       |   | <u>Limestone</u> , gray-white, grainstone, matrix I/A, about 4% porosity, slightly argillaceous, micrite, calcitic, hematite  |
| 734 - 740       |   | <u>Limestone</u> , white to gray to dark gray, packstone to grainstone, matrix I/A-B, argillaceous micrite, limonite, calcitic, porosity about 3-5%, small amount of blue-green montmorillonitic clay |
| 740 - 754       |   | Missed cuttings   |
| 754 - 756       |   | <u>Limestone</u> , white (30%) to gray, softer to medium, mudstone to grainstone, matrix I/A, porosity about 3%, argillaceous, calcitic, shell fragments  |
| 756 - 758       |   | <u>Limestone</u> , gray (65%) to light brown (35%), soft, mudstone to grainstone, matrix I/IIIA-B, argillaceous and micritic, wispy and slightly carbonaceous, calcitic                               |
| 758 - 764       |   | <u>Limestone</u> , light gray to brownish gray, compact, hard, matrix I/III/A/B, porosity about 6%, compact crystalline, intramicrite   |
| 764 - 770       |   | <u>Limestone</u> , white (5%), gray (35%) and brownish-gray, compact to mudstone, matrix I/IIIB, argillaceous, about 8% porosity, calcite, glauconitic  |
| 770 - 779       |   | <u>Limestone</u> , white to tan w/some dark gray (10%), grainstone, matrix I/III A-B, intramicrite, argillaceous, carboniferous, calcitic seams and microspar   |

## Appendix I-continued

### Descriptive Logs of Test Wells

#### Test Well 4 (58-36-503)

| Interval<br>(Feet) | Formation   | Description   |
|--------------------|---|---|
| 779 - 784          | Top of the Duck<br>Creek Formation<br>at 779 feet | <u>Limestone</u> , gray to brownish gray, compact crystalline to grainstone, matrix I/III A-B, intramicrite, calcite, pyrite, carbonaceous slightly argillaceous  |
| 784 - 795          |   | Same as above, but with weathered material and gypsiferous material   |
| 795 - 798          | Top of the<br>Kiamichi Formation<br>at 795 feet   | <u>Limestone</u> , brownish-gray, medium to hard, grainstone to compact crystalline, matrix I/III A-B, intramicritic and argillaceous, sparry calcite, carbonaceous   |
| 798 - 805          |   | <u>Limestone</u> , brownish-gray, some white, hard, packstone to compact crystalline, matrix I/III A-B, micritic and biomicrite, argillaceous, sparry calcite, carbonaceous, gypsum                             |
| 805 - 814          | Top of the<br>Kainer<br>Formation at<br>805 feet  | <u>Limestone and Dolomitic Limestone</u> , white (5%) to tan, hard, packstone to compact crystalline, matrix I/A and some III/B, sparry calcite, gypsum, carboniferous  |
| 814 - 825          |   | <u>Limestone</u> , cream to tan, packstone to grainstone to compact crystalline, matrix I/A, biomicrite and intramicrite, calcitic seam features  |
| 825 - 830          |   | <u>Limestone and Dolomitic Limestone</u> , cream to tan, hard, packstone to grainstone to compact crystalline, matrix I/III A-B, gypsum, sparry calcite, carbonaceous material, small amount of blue-green clay |
| 830 - 836          |   | Same as above, plus very brittle biostromes, biosparite, dolomitic plates, probably in the leached and collapsed members (stromatolithic crusts)  |
| 836 - 847          |   | <u>Limestone</u> , dark brownish-gray, hard to medium, matrix III/A-B (some IA), pyrite, intramicrite and argillaceous, still a lot of dolomite   |
| 847 - 852          |   | Missed cuttings   |
| 852 - 853          |   | <u>Limestone</u> , gray to brownish gray, hard, grainstone to compact crystalline, matrix I/III A-B, intramicrite, slightly dolomitic, wispy and some crossbedding, 10% porosity, slightly vuggy, calcitic      |

## Appendix I-continued

### Descriptive Logs of Test Wells

#### Test Well 4 (58-36-503)

| Interval<br>(Feet) | Formation | Description   | Interval<br>(Feet) |
|--------------------|-----------|---|--------------------|
| 853 - 854          |           | Same as above, with some breccia, crossbedding, porosity about 8%   |                    |
| 854 - 855          |           | <u>Limestone</u> , brownish-gray, medium to hard, mudstone to packstone to compact crystalline, matrix I/III A-B, calcitic, crossbedding, porosity about 6-8%         |                    |
| 855 - 856          |           | <u>Limestone</u> , brownish-gray, hard, packstone to compact crystalline, matrix I/III A-B, porosity about 10%, slightly vuggy, intrinsic porosity and moldic, pyrite |                    |
| 856 - 857          |           | <u>Limestone</u> , brownish-gray, hard, compact crystalline, matrix I/B, vuggy porosity about 10% porosity, pyrite and wispy  |                    |
| 857 - 858          |           | Same as above, but with large chert nodule at base  |                    |
|                    |           | Well discontinued due to poor quality of initial water sample   |                    |

## Appendix I-continued

### Descriptive Logs of Test Wells

#### Test Well 5 (58-22-402)

| Interval<br>(Feet) | Formation   | Description   |
|--------------------|---|---|
| 0 - 10             | Terrace Deposits                                  | <u>Gravel and Clay</u> , orange and white, dolomitic and cherty; tan clay, silty and sandy  |
| 10 - 14            |   | <u>Gravel</u> , orange and white, siliceous, chert and marl   |
| 14 - 24            |   | <u>Clay</u> , tan to dark gray, montmorillonitic, silt-sized quartz   |
| 24 - 72            | Top of the<br>Navarro/Taylor Groups<br>at 24 feet | <u>Marl</u> , light brown to red, calcareous, calcite fragments   |
| 72 - 87            |   | Same as above, but silty texture  |
| 87 - 366           |   | <u>Clay</u> , dark gray, calcareous, montmorillonitic, becoming fissile with depth; pyrite and hematite decreasing with depth                                       |
| 366 - 385          | Top of the Austin<br>Chalk at 366 feet            | <u>Marl</u> , gray to light gray, some glauconitic clay   |
| 385 - 560          |   | <u>Limestone</u> , gray to white, micritic, marly streaks; limonite and pyrite associated with carbonaceous streaks throughout                                      |
| 560 - 680          |   | <u>Chalk</u> , white, marly with bentonitic seams and pyrite  |
| 680 - 712          |   | <u>Limestone and Chalk</u> , dark gray, weathered, microgranular calcite with prisms (inoceranus), bentonitic seams; fissile shale and generally very fossiliferous |
| 712 - 897          |   | <u>Chalk</u> , light gray with some weathered yellow tint, soft biomicritic, becoming nodular with shale and pyrite more abundant with depth                        |
| 897 - 947          | Top of the Eagle<br>at 897 feet                   | <u>Siltstone and Shale</u> , dark olive-green, fissile, gypsiferous with shale streaks  |
| 947 - 961          | Top of the Buda<br>Limestone at 947<br>feet       | <u>Limestone</u> , light gray to brownish-gray, hard, argillaceous, cherty with microspherulites and mollusc fragments; some yellow marl                            |
| 961 - 992          |   | Missed cuttings   |
| 992 - 1054         | Top of the Del Rio<br>Clay at 992 feet            | <u>Clay</u> , dark gray, calcareous, pyritic with seams of siltstone  |

## Appendix I

### Descriptive Logs of Test Wells-

#### Test Well 5 (58-22-402)

| Interval (Feet) | Formation                                    | Description  |
|-----------------|--|--|
| 1054 - 1070     | Top of the Georgetown Limestone at 1054 feet | <u>Limestone</u> , light grayish-brown, grainstone and packstone, matrix I A/B, argillaceous, biomicritic, calcispheres, pyrite associated with carbonaceous units   |
| 1070 - 1079     |  | <u>Limestone and Shale</u> , brownish-gray, argillaceous, matrix I A/B, biomicrite; black shale throughout   |
| 1079 - 1083     |  | <u>Limestone</u> , light gray to brownish-gray, argillaceous, matrix I A/B   |
| 1083 - 1090     |  | <u>Shale and Limestone</u> , black shale with soft yellow streaks; brownish-gray, argillaceous limestone, some what cherty   |
| 1090 - 1100     |  | Same as above, but gas bubbles occurring in mud pit  |
| 1100 - 1110     |  | <u>Limestone</u> , brownish-gray to gray, packstone to boundstone, matrix I A/B, biomicrite, argillaceous, small bits of chert with white marl mixed in, carbonaceous throughout                                   |
| 1110 - 1120     |  | Same as above, but becoming sucrosic   |
| 1120 - 1146     |  | <u>Limestone</u> , gray, hard packstone, matrix I A/B, fine, biomicritic with silicified fossil bits and limonite  |
| 1146 - 1170     | Top of the Edwards at 1146 feet              | <u>Limestone</u> , light gray to brown, fine, bound Limestone stone to crystalline carbonate, matrix I/III A, marly in sections  |
| 1170 - 1180     |  | <u>Limestone</u> , dark brown to cream, probably bioclastic, grainstone to boundstone, matrix I/III A, porcellaneous micrite, but mostly argillaceous biomicrite, some glauconite and gypsiferous material, pyrite |
| 1180 - 1200     |  | Same as above, but oil stained at 1185 feet  |
| 1200 - 1210     |  | <u>Limestone and Dolomitic Limestone</u> , cream to brown, fine sucrosic, matrix III A/B, gypsiferous  |
| 1210 - 1222     |  | Same as above  |

## Appendix I-continued

### Descriptive Logs of Test Wells

#### Test Well 6 (58-13-301)

| Interval<br>(Feet) | Formation   | Description   |
|--------------------|---|---|
| 0 - 7              | Top Soil  | <u>Black Soil</u>   |
| 7 - 23             | Top of the<br>Terrace Deposits<br>at 7 feet       | <u>Conglomerate</u> , small peat gravel, silty clay, chert  |
| 23 - 30            |   | <u>Clay</u> , mostly clay, light gray to tan  |
| 30 - 94            |   | <u>Clay</u> , tan to orange silt and calcareous clay  |
| 94 - 130           | Top of the<br>Navarro/Taylor<br>Groups at 94 feet | <u>Clay</u> , dark gray, montmorillitic, with some hematite   |
| 130 - 180          |   | Same as above, but light gray   |
| 180 - 200          |   | <u>Clay</u> , gray, glauconitic, calcite fragments  |
| 200 - 279          |   | Same as above   |
| 279 - 353          | Top of the Austin<br>Chalk at 279 feet            | <u>Chalk</u> , light gray to white, soft calcium carbonate with bentonitic seams, limonite throughout                       |
| 353 - 379          |   | <u>Chalk</u> , light gray, soft to medium, biomicritic, limestone   |
| 379 - 490          |   | <u>Limestone and Chalk</u> , light gray, biomicritic, fine argillaceous material, limonite, and shale                       |
| 490 - 540          |   | <u>Chalk and Limestone</u> , white to light gray, marly chalk, argillaceous limestone with limonite, some oil shows at base |
| 540 - 680          |   | <u>Chalk and Limestone</u> , gray, soft, biomicritic, bentonitic seams, limonite, pyrite, some blue shaley streaks at base  |
| 680 - 720          |   | <u>Chalk</u> , gray, soft, and marly with calcitic fragments  |
| 720 - 735          |   | <u>Chalk and Siltstone</u> , soft marly gray chalk with calcareous siltstone  |
| 735 - 741          |   | <u>Limestone</u> , gray to green-gray, soft to medium, some flaggy siltstone, yellow to brown with shale streaks            |
| 741 - 746          | Top of the Eagle<br>Ford Group at 741 feet        | <u>Siltstone</u> , brown to green, fissile with shale streaks throughout  |



## Appendix I-continued

### Descriptive Logs of Test Wells

#### Test Well 6 (58-13-301)

| Interval (Feet) | Formation                                   | Description  |
|-----------------|---|--|
| 746 - 775       |   | <u>Shale and Siltstone</u> , black calcareous shale, very soft siltstone with oil stains   |
| 775 - 811       |   | <u>Shale</u> , olive to black, oil stains  |
| 811 - 846       |   | Same as above  |
| 846 - 866       | Top of the Buda Limestone at 846 feet       | <u>Limestone</u> , light gray, very hard, argillaceous micrite, some black claystone   |
| 866 - 944       | Top of the Del Rio Clay at 866 feet         | <u>Clay and Shale</u> , blue-gray, gypsiferous, bentonitic gray clay, fossiliferous  |
| 944 - 957       | Top of the Georgetown Limestone at 944 feet | <u>Limestone</u> , light gray, packstone to mudstone, biomicritic, matrix I A/B, pyritic   |
| 957 - 974       |   | <u>Limestone</u> , gray to brownish-gray, biomicritic to biosparite, packstone, matrix I/II A/B, black shale throughout                          |
| 974 - 983       |   | Same as above, but cherty  |
| 983 - 1005      |   | <u>Limestone</u> , brownish-gray, biomicritic, packstone, matrix III A/B, some glauconitic material  |
| 1005 - 1050     |   | <u>Limestone</u> , gray to dark gray, mudstone to packstone, matrix I/III A/B, calcispheres  |
| 1050 - 1063     | Top of the Edwards Limestone at 1050 feet   | <u>Limestone and Dolomitic Limestone</u> , brownish-gray to gray, intramicritic to biomicritic, packstone, matrix I/II A/B, mud balls present    |
| 1063 - 1070     |   | <u>Dolomitic Limestone</u> , dark brown to dark gray, packstone and boundstone, matrix III A/B, gypsiferous                                      |
| 1070 - 1094     |   | <u>Limestone and Dolomitic Limestone</u> , gray to dark gray, biomicritic, packstone to crystalline carbonate, matrix I/III A/B, oolitic, cherty |
| 1094 - 1121     |   | <u>Dolomitic Limestone</u> , brownish-gray, packstone to crystalline carbonate, matrix I/III A/B, blue shale streaks                             |
| 1121 - 1136     |   | Same as above  |
| 1136 - 1140     |   | Free fall, no cuttings   |

## Appendix I--continued

### Descriptive Logs of Test Wells

#### Test Well 7 (40-61-705)

| Interval<br>(Feet)                  | Formation   | Description   |
|-------------------------------------|---|---|
| 0 - 3                               | Topsoil   | <u>Black Soil</u>   |
| 3 - 31                              | Top of the<br>Terrace Deposits                      | <u>Conglomerate</u> , fluvial deposits of gravel, sand, and silt containing silicates and some at 2 feet quartz deposits and white, very thin limestone beds; very little clay  |
| 31 - 34                             | Top of the<br>Georgetown<br>Limestone at<br>31 feet | <u>Limestone</u> , light gray to white grainstone, mud clasts   |
| 34 - 36<br>(100% core<br>recovered) |   | <u>Limestone</u> , medium to hard, light gray to white, matrix IA, very fine, mudstone to grainstone, oosparite, nodular, wispy, mollusc biomiuite, <u>Globigerina</u> , pyrite and mud clasts throughout   |
| 36 - 45<br>(72% core<br>recovered)  |   | <u>Limestone</u> , medium to hard, gray to white, matrix IA, fine, mudstone to grainstone, oosparite, nodular, wispy, pyrite nodules  |
| 45 - 50<br>(100% core<br>recovered) |   | <u>Limestone</u> , hard, gray to white, grainstone to compact crystalline, matrix I/III A/B, resinous to vitreous, intramiuite and mullosc fragmented biomicrite abundant fossils such as <u>Exogy. arietina</u> , <u>Globigerina</u><br>- 45 mass of fossils and pyrite<br>- 47 soft mud lumps |
| 50 - 60<br>(100% core<br>recovered) |   | <u>Limestone</u> , mostly white, grainstone to compact crystalline, matrix I/III A/B, resinous to vitreous, nodular top half, thin crossbedding in bottom half, pyrite throughout<br>- 56 shale streak<br>- 59 fractured and poorly bedded, secondary porosity                                  |
| 60 - 70<br>(100% core<br>recovered) |   | Same as above<br>- 62 very nodular<br>- 69 fracturing   |
| 70 - 80<br>(100% core<br>recovered) |   | <u>Limestone</u> , white, mudstone to compact crystalline, matrix I/III A/B, sucrosic thin bedding, some pyrite   |
| 80 - 90<br>(100% core<br>recovered) | Top of the<br>Edwards Limestone<br>at 83 feet       | <u>Limestone and Dolomite Limestone</u> , top 3 same as above, tan to brownish-gray, grainstone to compact crystalline, matrix I/III A/B, biomicritic, fossiliferous (millinods)<br>-- 82-1/2 green shale streak<br>-- 86 pitted porosity and fracturing<br>-- 88-1/2 massive fossil bed        |

## Appendix I-continued

### Descriptive Logs of Test Wells

#### Test Well 7 (40-61-705)

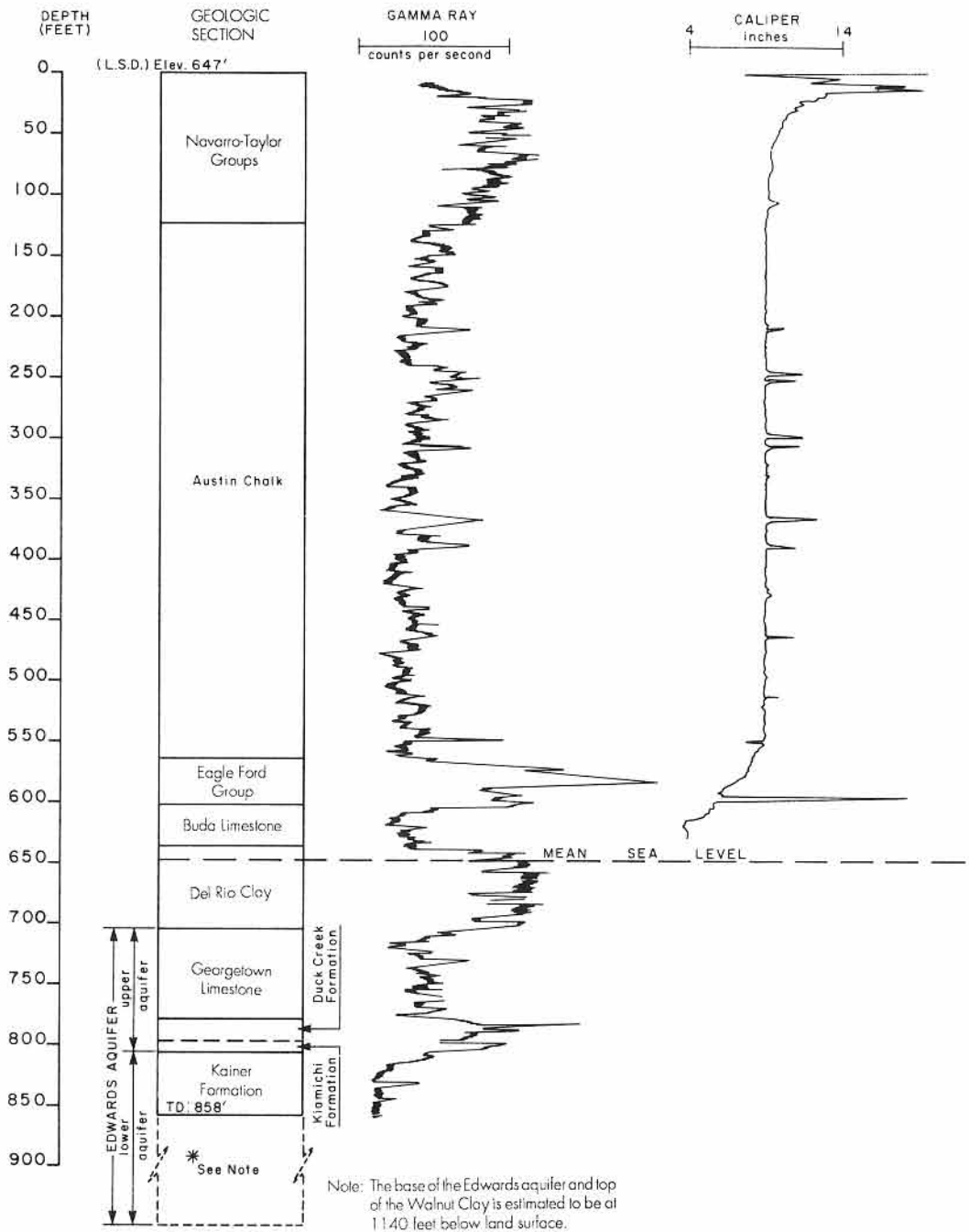
| Interval<br>(Feet)                    | Formation                                      | Description  |
|---------------------------------------|--|--|
| 90 - 93<br>(100% core recovered)      |  | Same as above<br>- 91 & 93 pits with black patches of oil<br>- 92 stramotolitic crust  |
| 93 - 101 1/2<br>(87% core recovered)  |  | <u>Dolomitic Limestone</u> , brown, compact crystalline, matrix III A/B, biomicritic, fossiliferous, pitted porosity<br>- 93 chert bed, slow cutting<br>- 96-1/2 thin bedding                    |
| 101 1/2 - 110<br>(75% core recovered) |  | Same as above<br>- 102-1/2 wispy<br>- 106-1/2 chert  |
| 110 - 119<br>(100% core recovered)    |  | Same as above<br>- 112 chert<br>- 117-1/2 nodular with pitted porosity   |
| 119 - 130<br>(110% core recovered)    |  | <u>Dolomitic Limestone</u> , brown grainstone to compact crystalline, matrix I/III A/B,<br>- 119-121 fractured porosity<br>- 123-1/2 crystalline crusts with fossils<br>- 127-1/2 cherty nodules |
| 130 - 141<br>(90% core recovered)     |  | Same as above<br>- 132-1/2 - 134 pitted porosity<br>- 135 collapse zone remnants<br>- 137-1/2 wispy  |
| 141 - 151<br>(97% core recovered)     |  | Same as above  |
| 151 - 160<br>(90% core recovered)     | Top of the Comanche Peak Limestone at 155 feet | <u>Limestone and Dolomitic Limestone</u> , top (to 155 feet) same as above, from 155 feet down white, hard, dense limestone, slightly argillaceous, wispy, some spar filled fractures            |
| 160 - 170                             |  | Same as above  |
| 170 - 180                             |  | Same as above  |

## **Appendix I-continued**

### **Descriptive Logs of Test Wells**

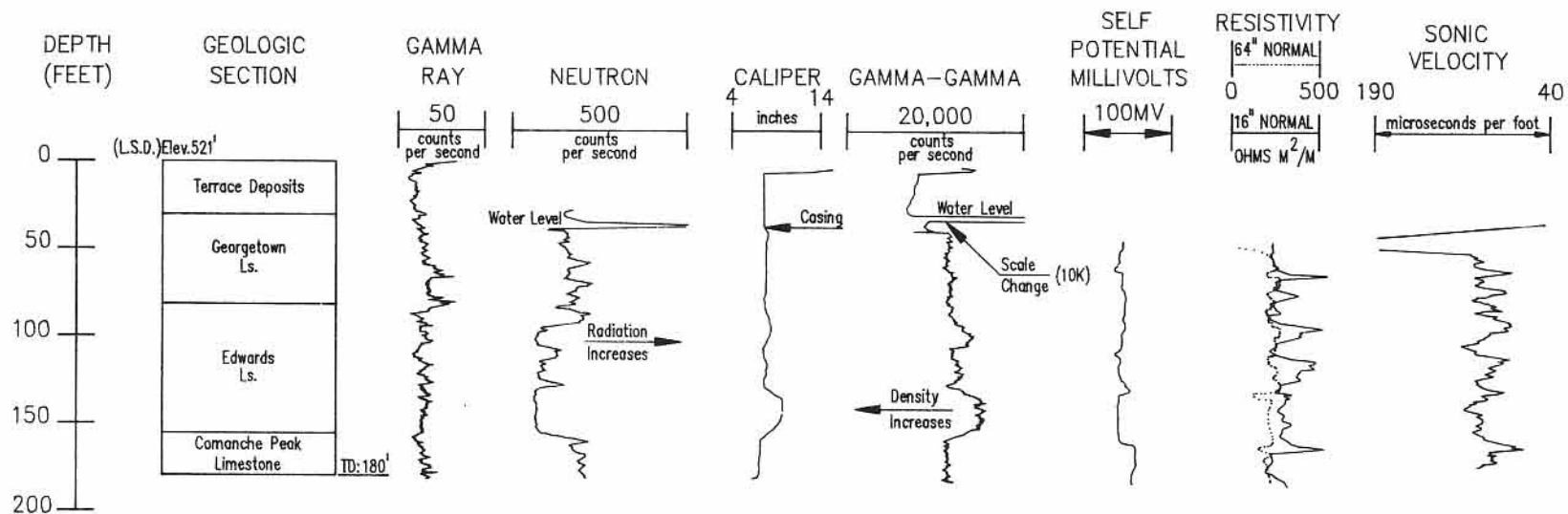
#### **Test Well 8 (58-12-901)**

No cutting collected for this test well.



**Appendix 2 - continued**  
**Geophysical Logs, Test Well 4 (58-36-503)**





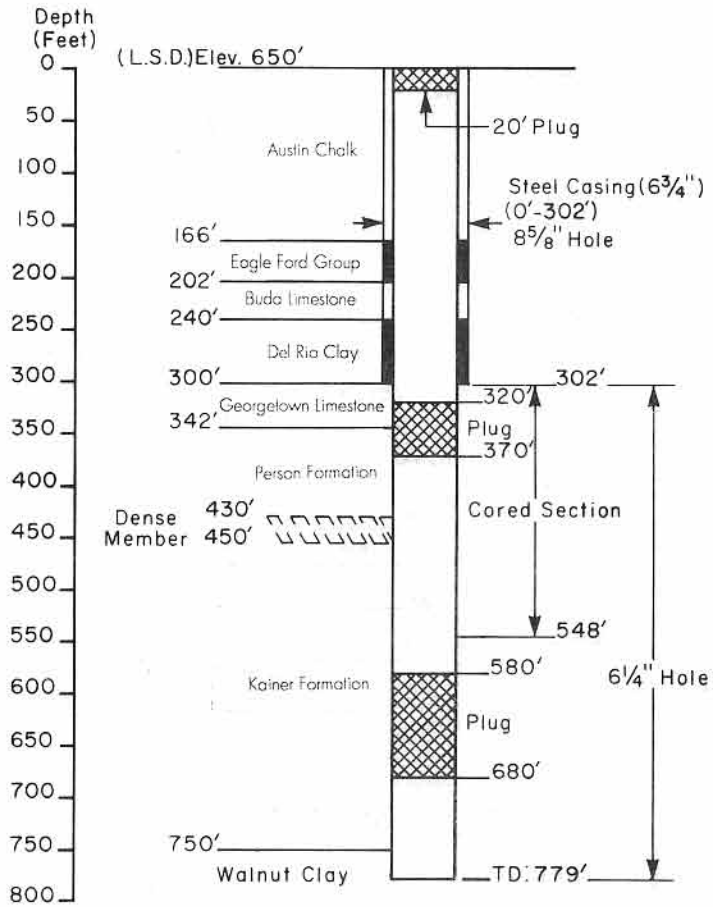
Note: Sonic Porosity ( $\phi$ ) is based on the following formula.

$$\phi = \frac{\Delta \log - \Delta ma}{\Delta f - \Delta ma} = \frac{\Delta \log - 47.6}{218 - 47.6} = \frac{\Delta \log - 47.6}{170.4}$$

**Appendix 2 - continued**  
**Geophysical Logs, Test Well 7 (40-61-705)**

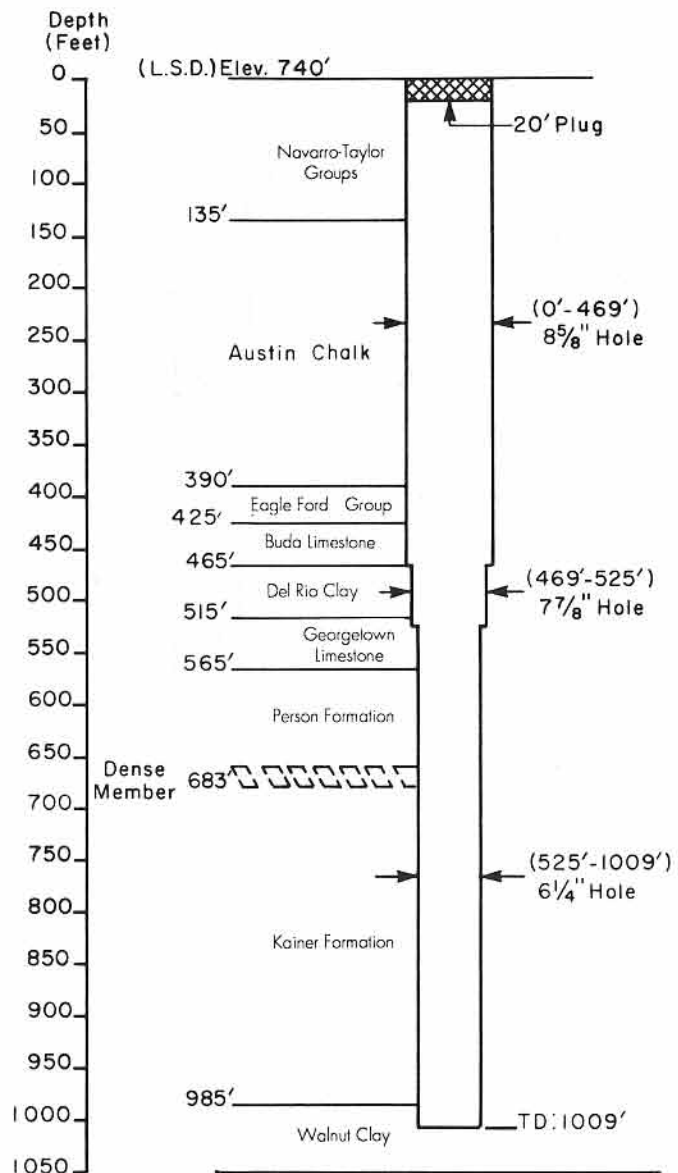






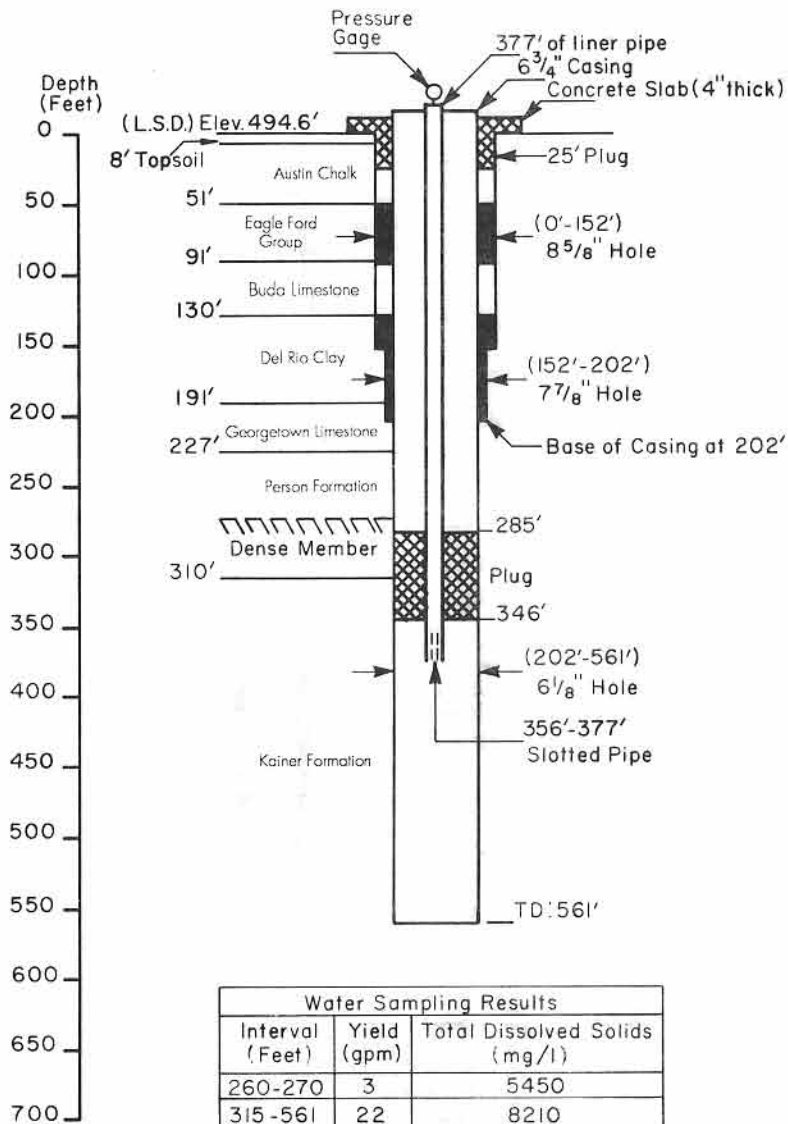
| Water Sampling Results |             |                               |
|------------------------|-------------|-------------------------------|
| Interval (Feet)        | Yield (gpm) | Total Dissolved Solids (mg/l) |
| 350-360                | 5           | 2850                          |
| 420-460                | 2           | 740                           |
| 520-560                | 12          | 450                           |
| 580-620                | 5           | 840                           |
| 680-720                | 5           | 4000                          |
| 301-779                | 20          | 704                           |

**Appendix 3**  
**Schematic, Test Well 1 (58-50-603)**



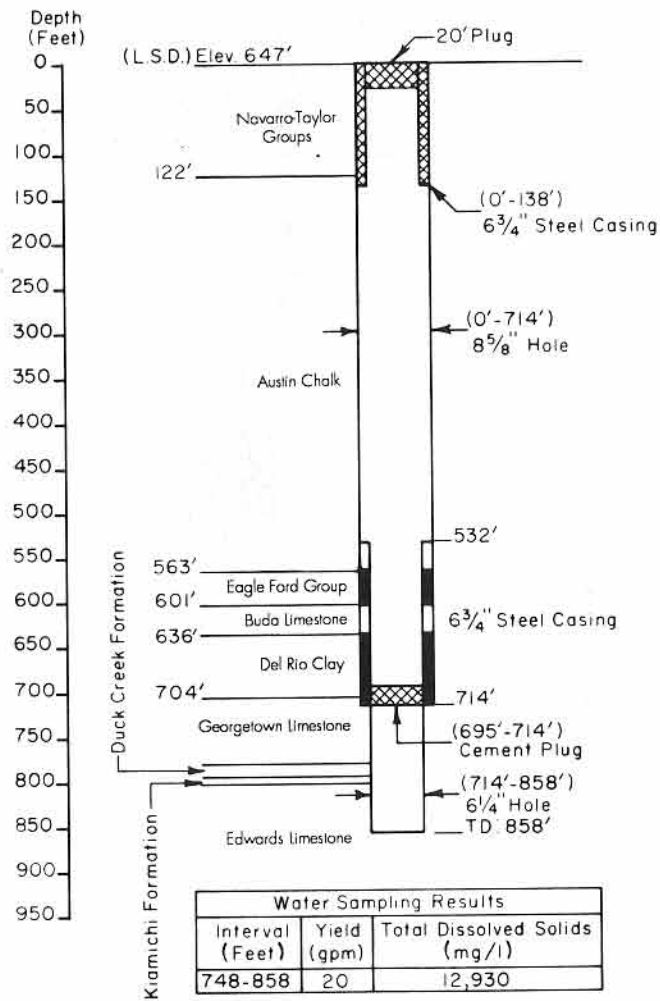
| Water Sampling Results |             |                               |
|------------------------|-------------|-------------------------------|
| Interval (Feet)        | Yield (gpm) | Total Dissolved Solids (mg/l) |
| 515-985                | 8           | 1234                          |

**Appendix 3 - continued**  
**Schematic, Test Well 2 (58-58-213)**

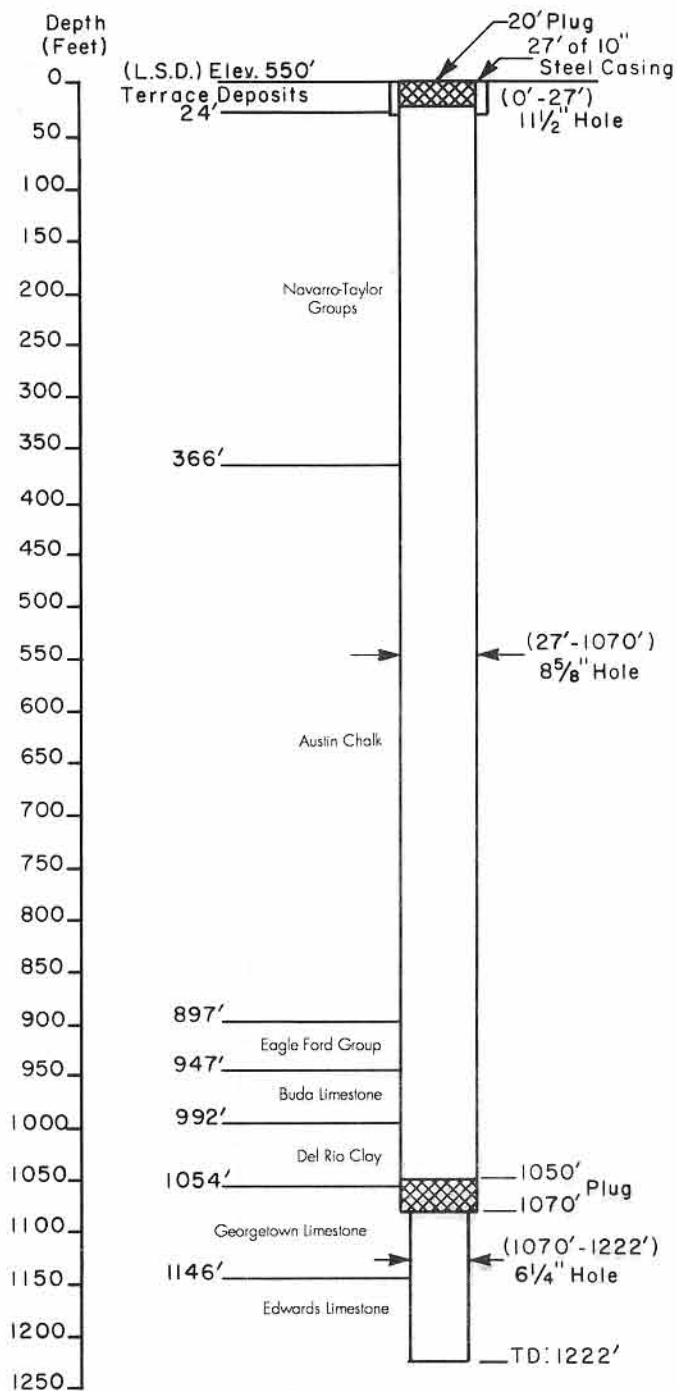


| Water Sampling Results |             |                               |
|------------------------|-------------|-------------------------------|
| Interval (Feet)        | Yield (gpm) | Total Dissolved Solids (mg/l) |
| 260-270                | 3           | 5450                          |
| 315-561                | 22          | 8210                          |
| COMPOSITE SAMPLE       |             |                               |
| 202-561                | 18          | 7924                          |

**Appendix 3 - continued**  
**Schematic, Test Well 3 (58-42-927)**

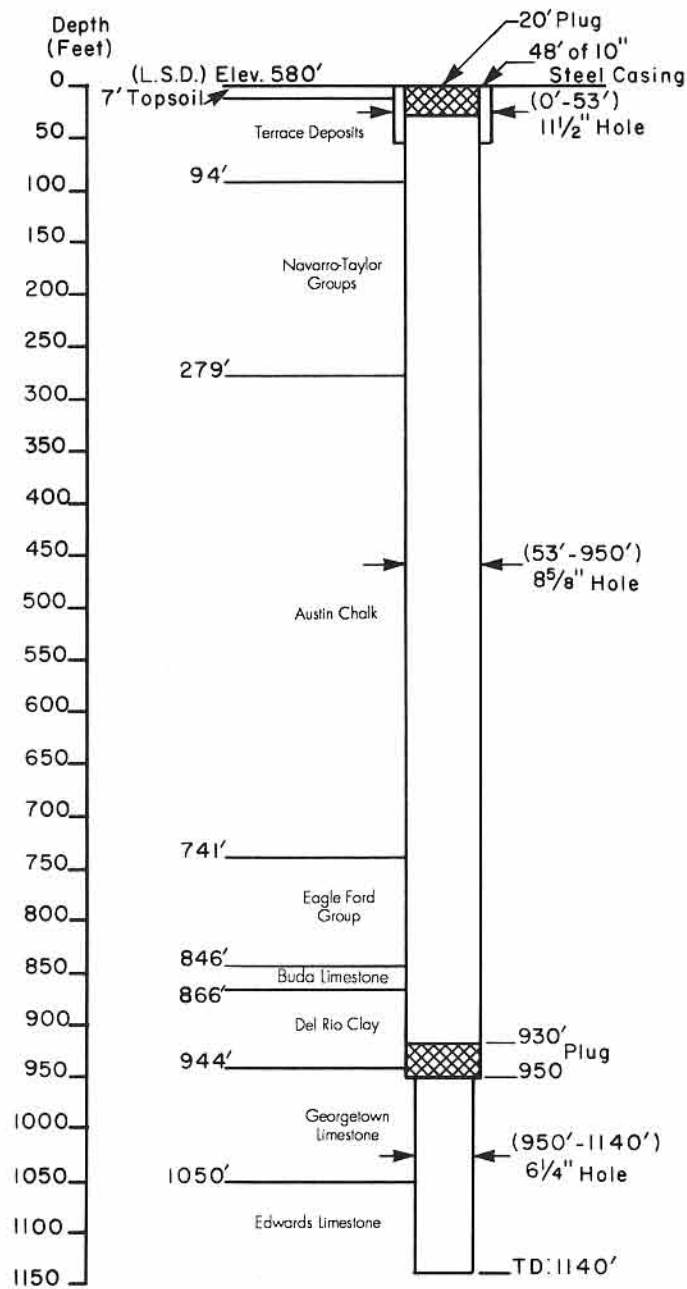


**Appendix 3 - continued**  
**Schematic, Test Well 4 (58-36-503)**



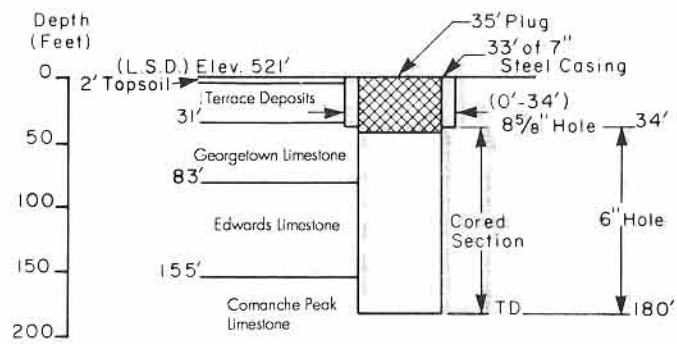
| Water Sampling Results |             |                               |
|------------------------|-------------|-------------------------------|
| Interval (Feet)        | Yield (gpm) | Total Dissolved Solids (mg/l) |
| 1054-1222              | 11          | 6098                          |

**Appendix 3 - continued**  
**Schematic, Test Well 5 (58-22-402)**



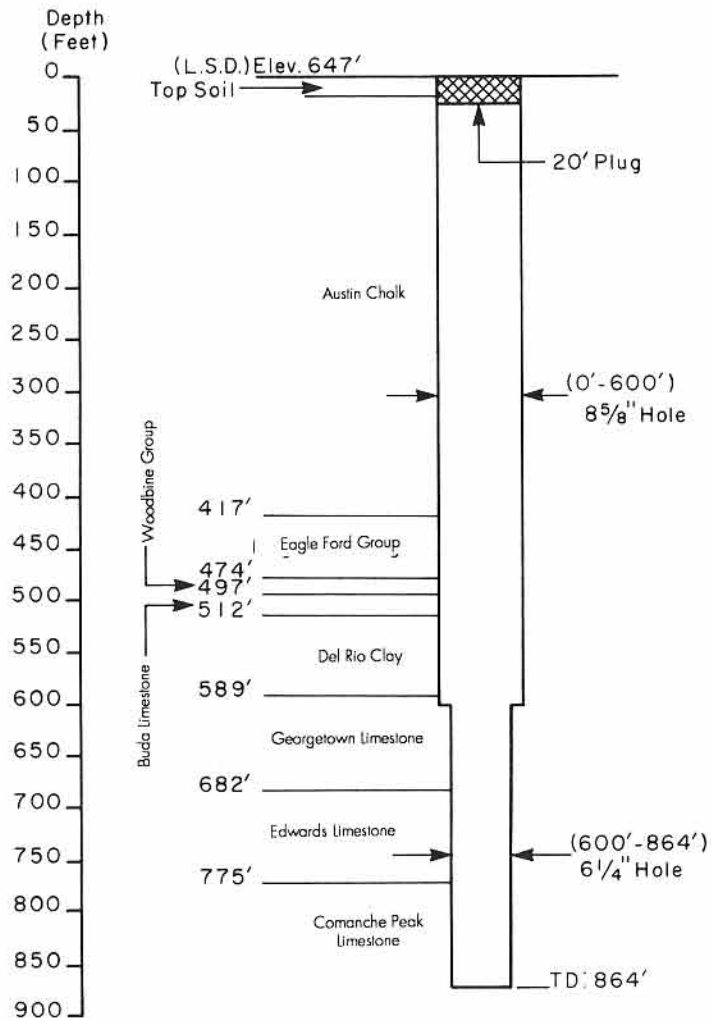
| Water Sampling Results |             |                               |
|------------------------|-------------|-------------------------------|
| Interval (Feet)        | Yield (gpm) | Total Dissolved Solids (mg/l) |
| 980-1140               | 5           | 4265                          |

**Appendix 3 - continued**  
**Schematic, Test Well 6 (58-13-301)**



| Water Sampling Results |             |                               |
|------------------------|-------------|-------------------------------|
| Interval (Feet)        | Yield (gpm) | Total Dissolved Solids (mg/l) |
| 34-180                 | 1-2         | 691                           |

**Appendix 3 - continued  
Schematic, Test Well 7 (40-61-705)**



| Water Sampling Results |             |                               |
|------------------------|-------------|-------------------------------|
| Interval (Feet)        | Yield (gpm) | Total Dissolved Solids (mg/l) |
| 580-804                | 22          | 981                           |

**Appendix 3 - continued**  
**Schematic, Test Well 8 (58-12-901)**