

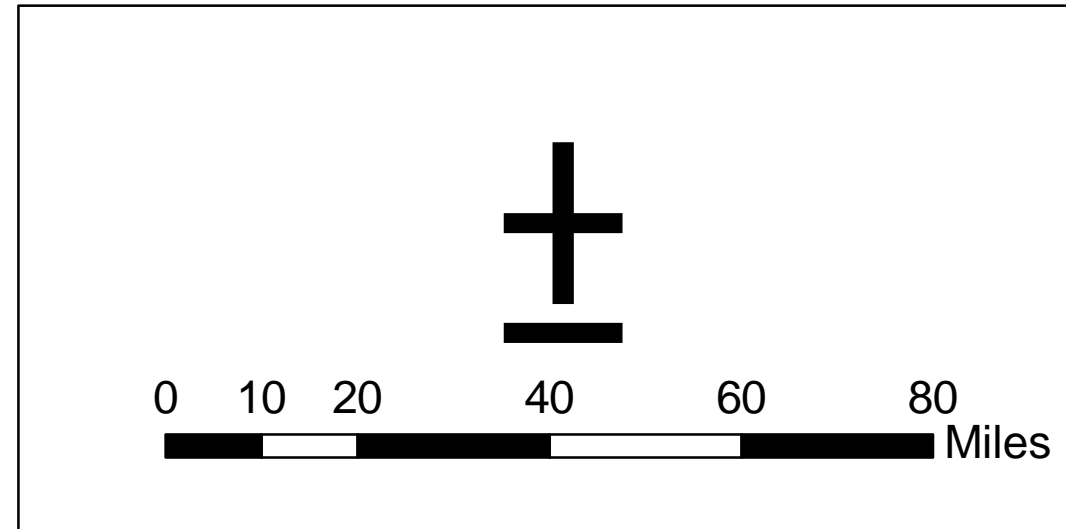
Plate 1.
Study Base Map

Legend

- Yegua-Jackson Outcrop
- State Line
- County Boundaries
- Cross-Sections (DIP)
- Cross-Sections (STRIKES A and B)
- Cross-Section (STRIKE C)

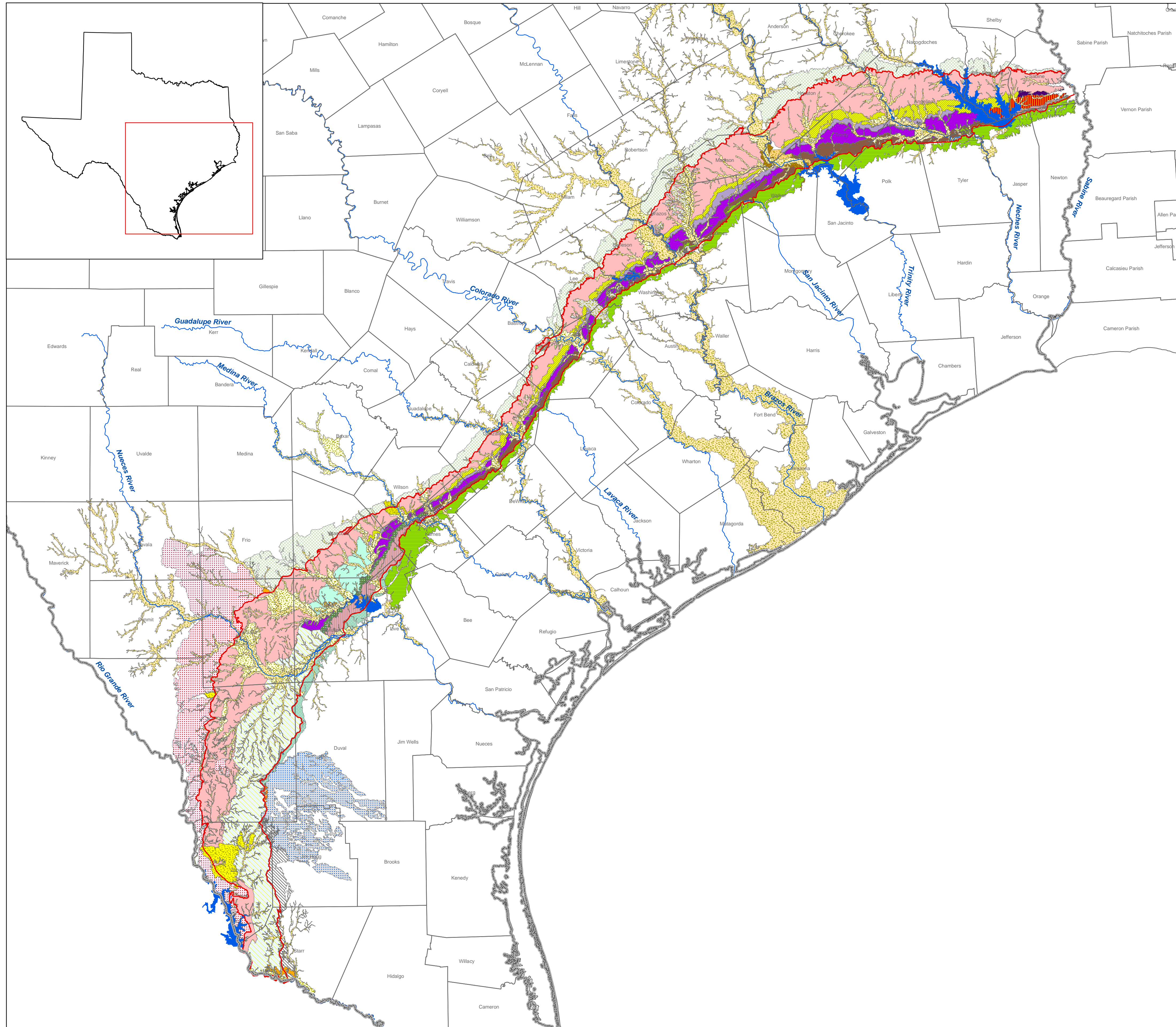
Well Locations

- Well Logs Digitized
- + Well Logs Not Digitized



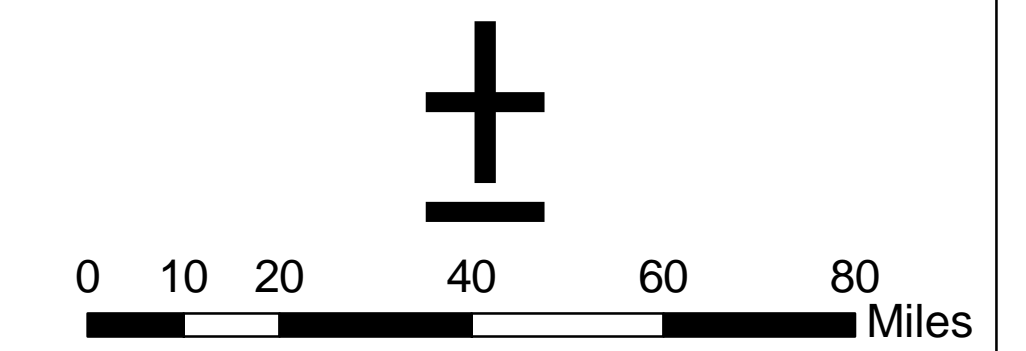
Source: N/A
File: Study Base Map.mxd

Plate 2.
Location of Geologic Formations
Within and Adjacent to the
Yegua-Jackson Outcrop Area



Legend

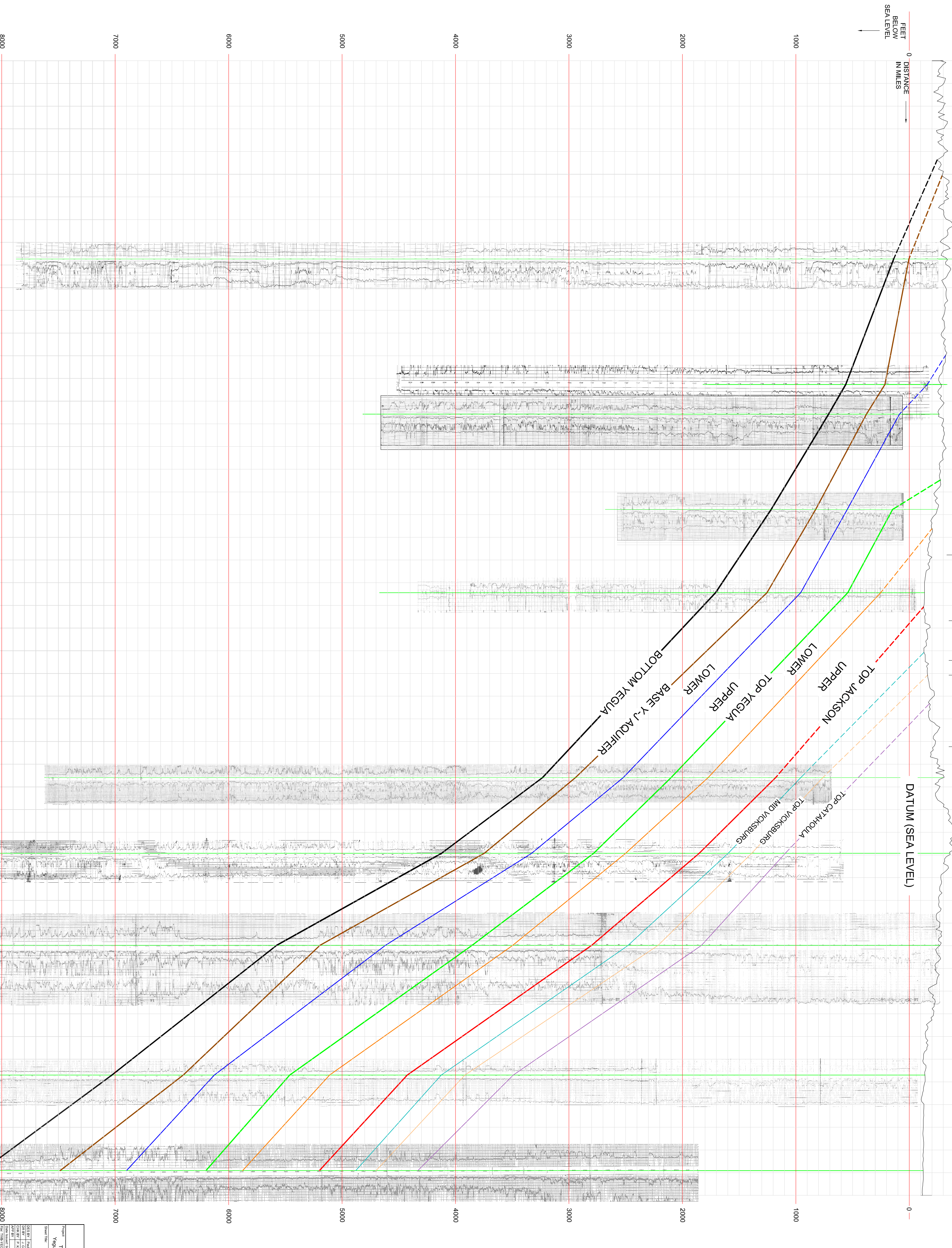
- State Line
 - Yegua-Jackson Outcrop
 - County Boundaries
 - Major Rivers
- Geologic Formations**
- Lakes and Reservoirs
 - Windblown sand
 - Alluvium
 - Fluviatile terrace deposits
 - Deweyville Formation
 - Beaumont Formation
 - Leona Formation
 - Uvalde Gravel
 - High gravel deposits
 - Willis Formation
 - Goliad Formation
 - Catahoula Formation
 - Fant Tuff Member
 - Catahoula and Frio Fms undivided
 - Frio Formation
 - Jackson Group, undivided
 - Whitsett Formation
 - Nash Creek Formation
 - Dubose and Deweesville Sandstone Mbr
 - Deweesville Sandstone Mbr
 - Conquista Clay Mbr and Dilworth Sandstone Mbr
 - Yazoo Formation
 - Manning Formation
 - Wellborn Formation
 - Moodys Branch Formation
 - Caddell Formation
 - Manning, Wellborn, and Caddell Fms, undivided
 - Yegua Formation
 - Cook Mountain Formation
 - Laredo Formation
 - Wilcox Group, undivided



Source: N/A
 File: Study Base Map.mxd

NW 500 0 2 4 6 8 10 12 14 16 18 20 22 24 26 28 30 32 34 36 38 40 42 44 46 48 50 52 54 56 58 60 62 64 66 68 70 72 74 76 78 80 82 84 86 88 90 92 94 96 98 100 SE

0 FEET BELOW SEA LEVEL
DISTANCE IN MILES



Angelina Co.

Polk Co.

Tyler Co.

Hardin Co.

PLATE 3
Project: Texas Water Development Board
Vegua - Jackson Structure Development
Scale: 1" = 2000'
Vertical Scale: 1" = 200 FT
Horizontal Scale: 1" = 20 MILES
Date: 11/15/2011
Author: [Name]

NW 500 0 2 4 6 8 10 12 14 16 18 20 22 24 26 28 30 32 34 36 38 40 42 44 46 48 50 52 54 56 58 60 62 64 66 68 70 72 74 76 78 80 82 84 86 88 90 92 94 96 98 100 SE

Houston Co.

Trinity Co.

Polk Co.

Liberty Co.

0 FEET BELOW SEA LEVEL
DISTANCE IN MILES

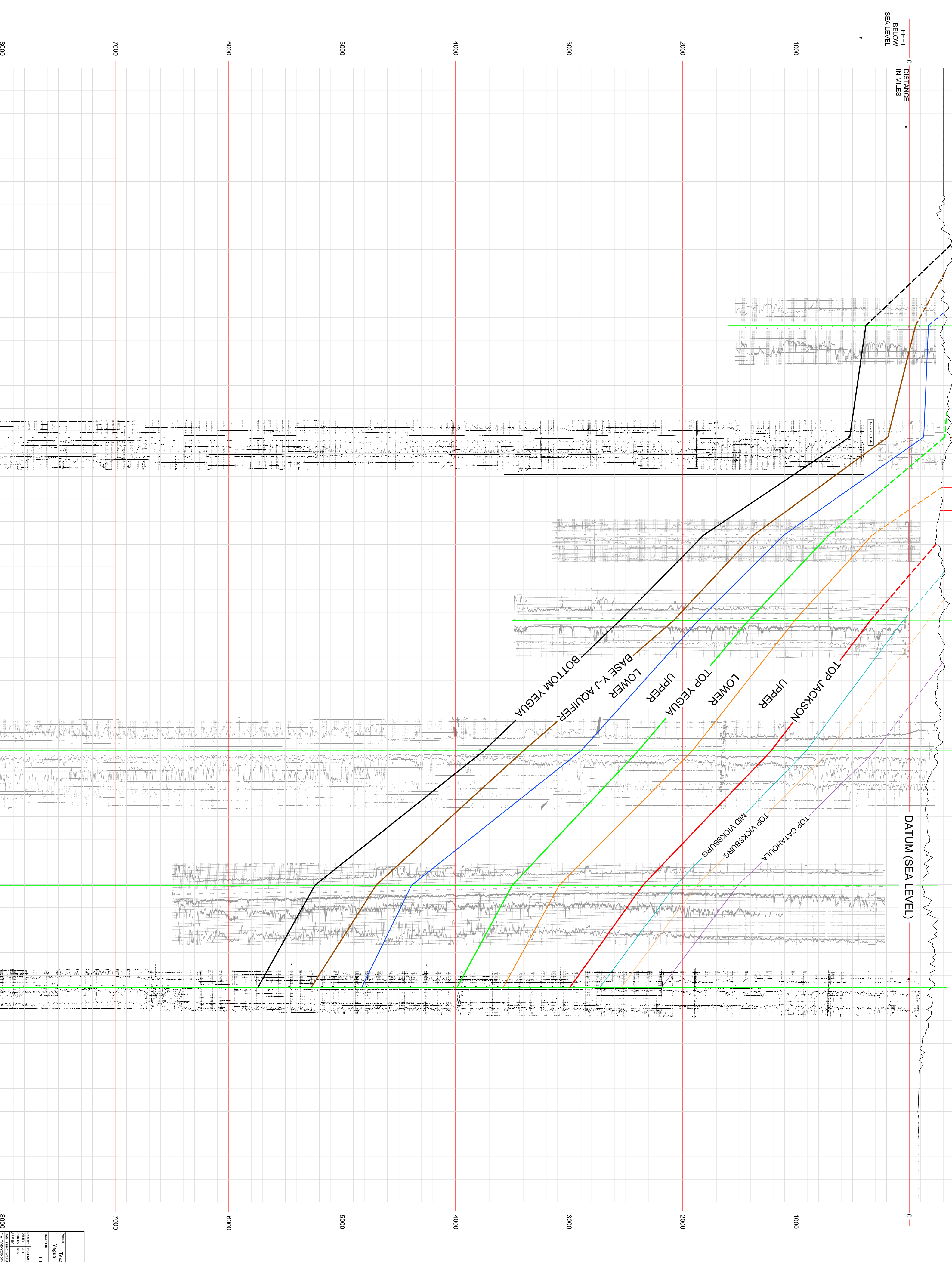


PLATE 4

Project: Trans Water Development Board
Vegua - Jackson Structure Development

Scale: 1" = 1000'

DIP CROSS SECTION 4

VERTICAL SCALE: 1" = 200 FT
HORIZONTAL SCALE: 1" = 2.5 MILES

DATE: 11/15/2023
DRAWN BY: P. K.
CHECKED BY: S. B.

Leon Co.

Madison Co.

Walker Co.

Montgomery Co.

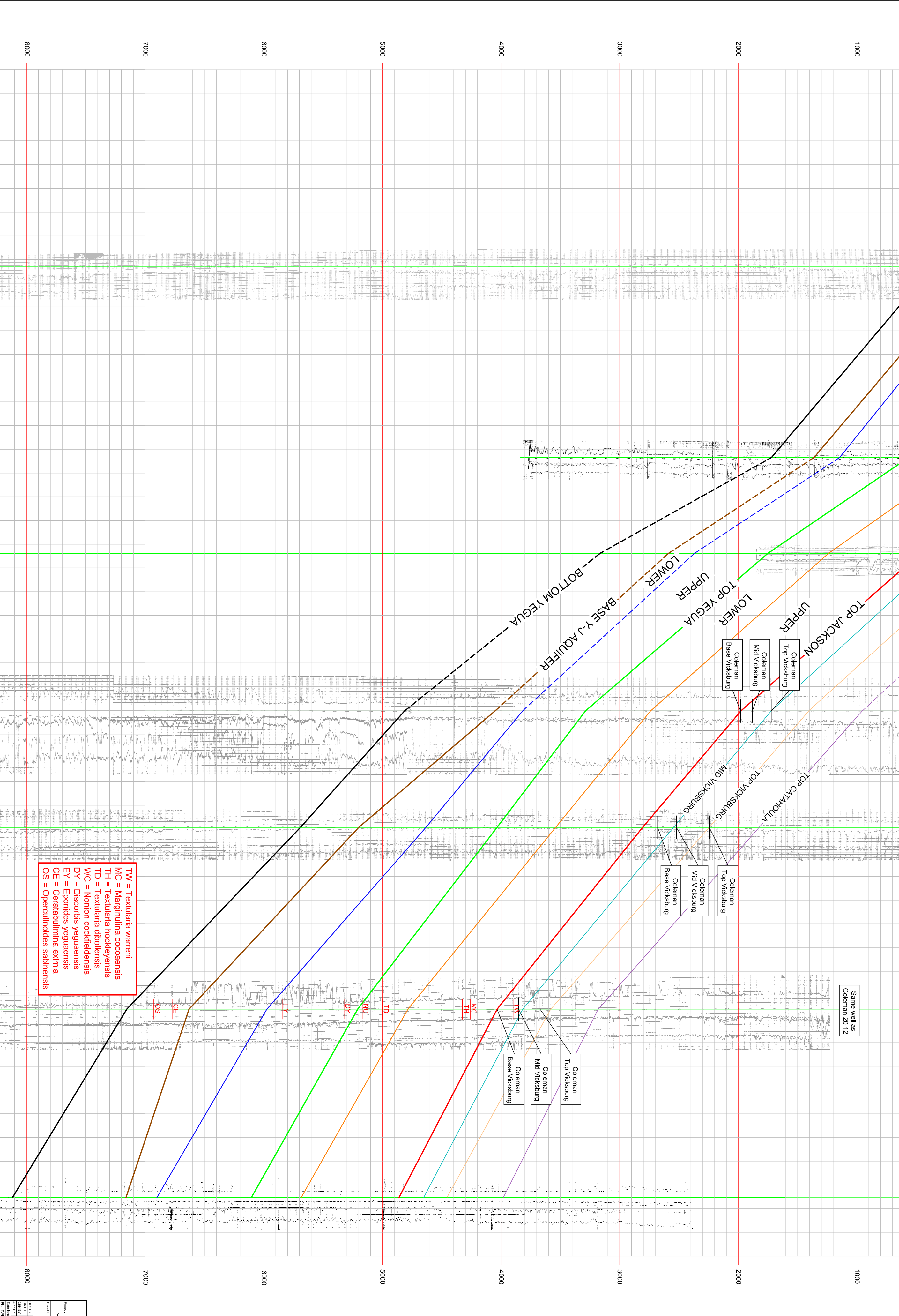
Harris Co.

500 0 2 4 6 8 10 12 14 16 18 20 22 24 26 28 30 32 34 36 38 40 42 44 46 48 50 52 54 56 58 60 62 64 66 68 70 72 74 76 78 80 82 84 86 88 90 92 94 96 98 100 500 SE

0 1000 2000 3000 4000 5000 6000 7000 8000

FEET BELOW SEA LEVEL

DISTANCE IN MILES



TW = Textularia warreni
 MC = Marginulina coccoensis
 TH = Textularia hockleyensis
 TD = Textularia dibollensis
 WC = Nonion cockfieldensis
 DY = Discorbis yeguensis
 EY = Eponides yeguensis
 CE = Ceratohumina eximia
 OS = Operculinoides sabiniensis

PLATE 5
 Title: Texas Water Development Board
 Yegua - Jackson Stratigraphic Development
 DPE CROSS SECTION 6
 Vertical Scale = 1" = 200 FT
 Horizontal Scale = 1" = 2.5 MILES
 Date: 11/11/2009
 Author: J. K. ...
 Checker: ...
 Designer: ...
 Drafter: ...

NW

700 0 2 4 6 8 10 12 14 16 18 20 22 24 26 28 30 32 34 36 38 40 42 44 46 48 50 52 54 56 58 60 62 64 66 68 70 72 74 76 78 80 82 84 86 88 90 92 94 96 98 100

SE

COOK MOUNTAIN YEGUA CADDELL WELLBORN MANNING WHITSETT CATIAHOLA
5944109 DP9-6 DP9-7 DP9-8R DP9-8 DP9-12 DP9-13

0 DISTANCE IN MILES
FEET BELOW SEA LEVEL
DATUM (SEA LEVEL)

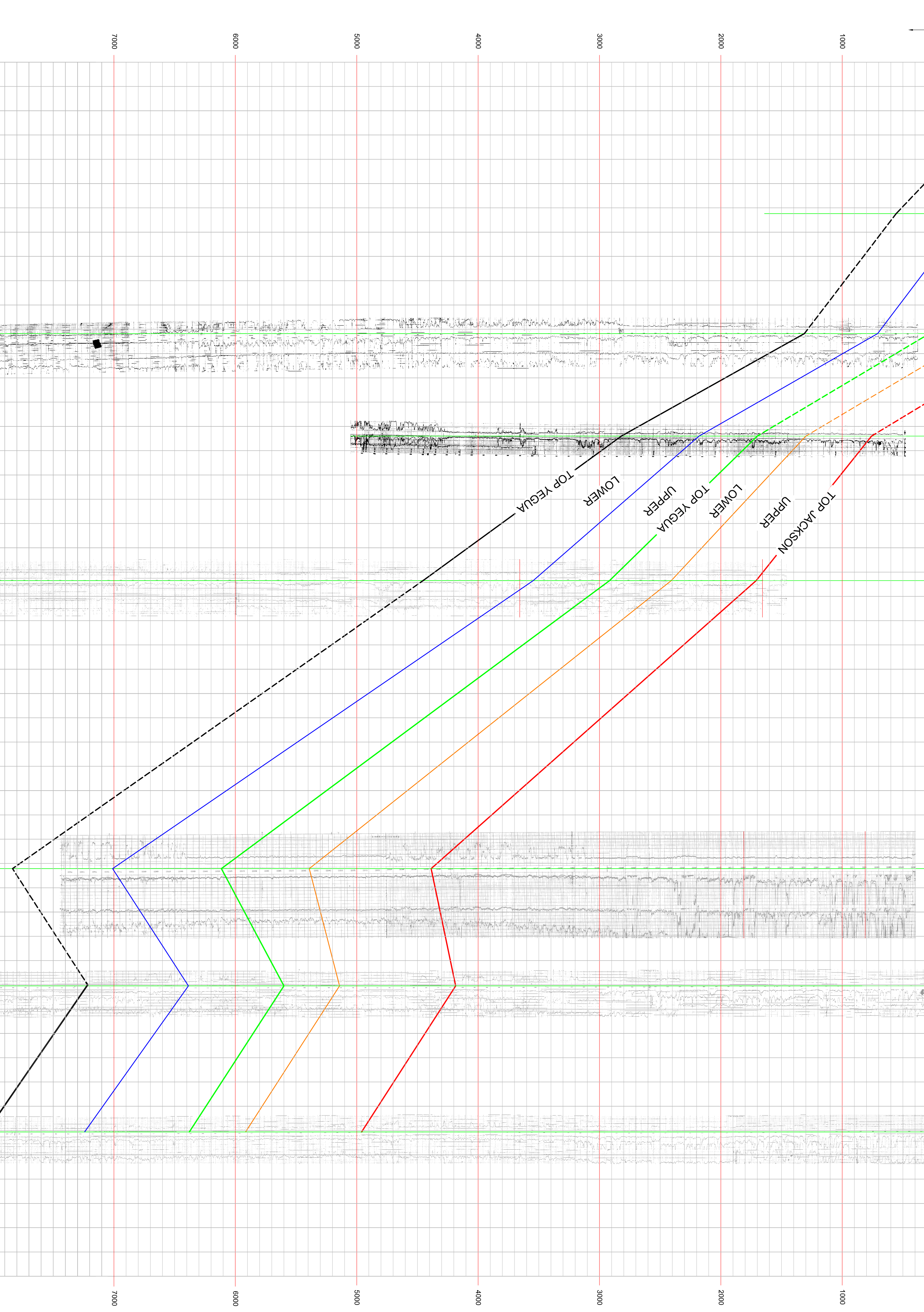


PLATE 6

Project: Texas Water Development Board
 Yegua - Jackson Structure Development
 Scale: 1" = 1000'
 Vertical Scale: 1" = 200'
 Horizontal Scale: 1" = 2.5 MILES
 Date: 11/15/2011
 Author: TWD/STC/STP/STP

Guadalupe Co.

Gonzales Co.

Dewitt Co.

Victoria Co.

NW

SE

FEET
BELOW
SEA LEVEL

DISTANCE
IN MILES

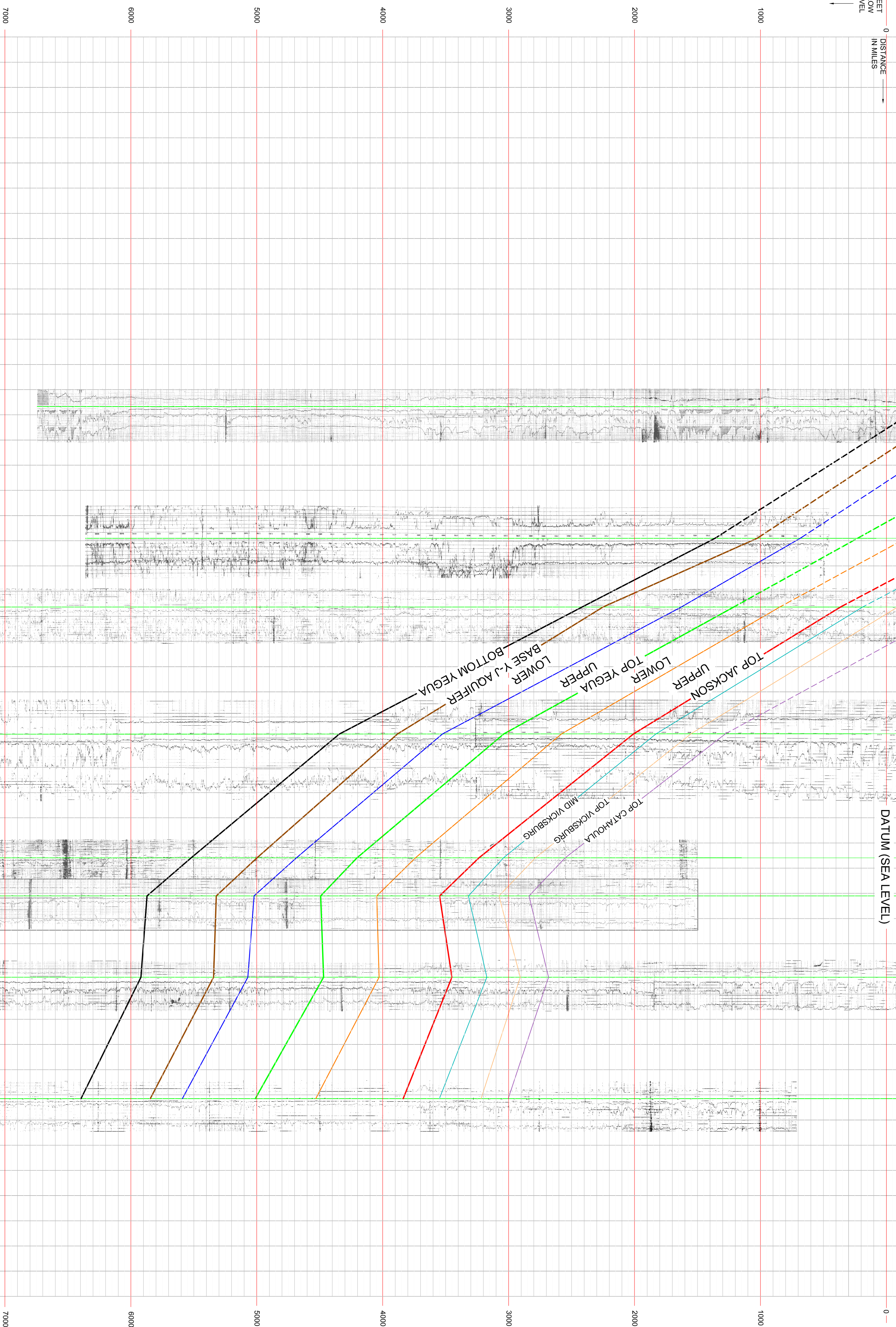


PLATE 7

Project: Texas Motor Development Board
Vegas - Jackson - Studium Development

Scale: Vertical Scale = 1"=200 FT
Horizontal Scale = 1"=25 MILES

Well: DP13-3

Section: DP CROSS SECTION 14

Author: [Name]

Date: [Date]

Atascosa Co.

Wilson Co.

Karnes Co.

Live Oak Co.

Bee Co.

Refugio Co.

WNW

ESE

FEET BELOW SEA LEVEL

DATUM (SEA LEVEL)

Same well as Coleman 11-23

Coleman Top Vicksburg
Coleman Mid Vicksburg
Coleman Base Vicksburg

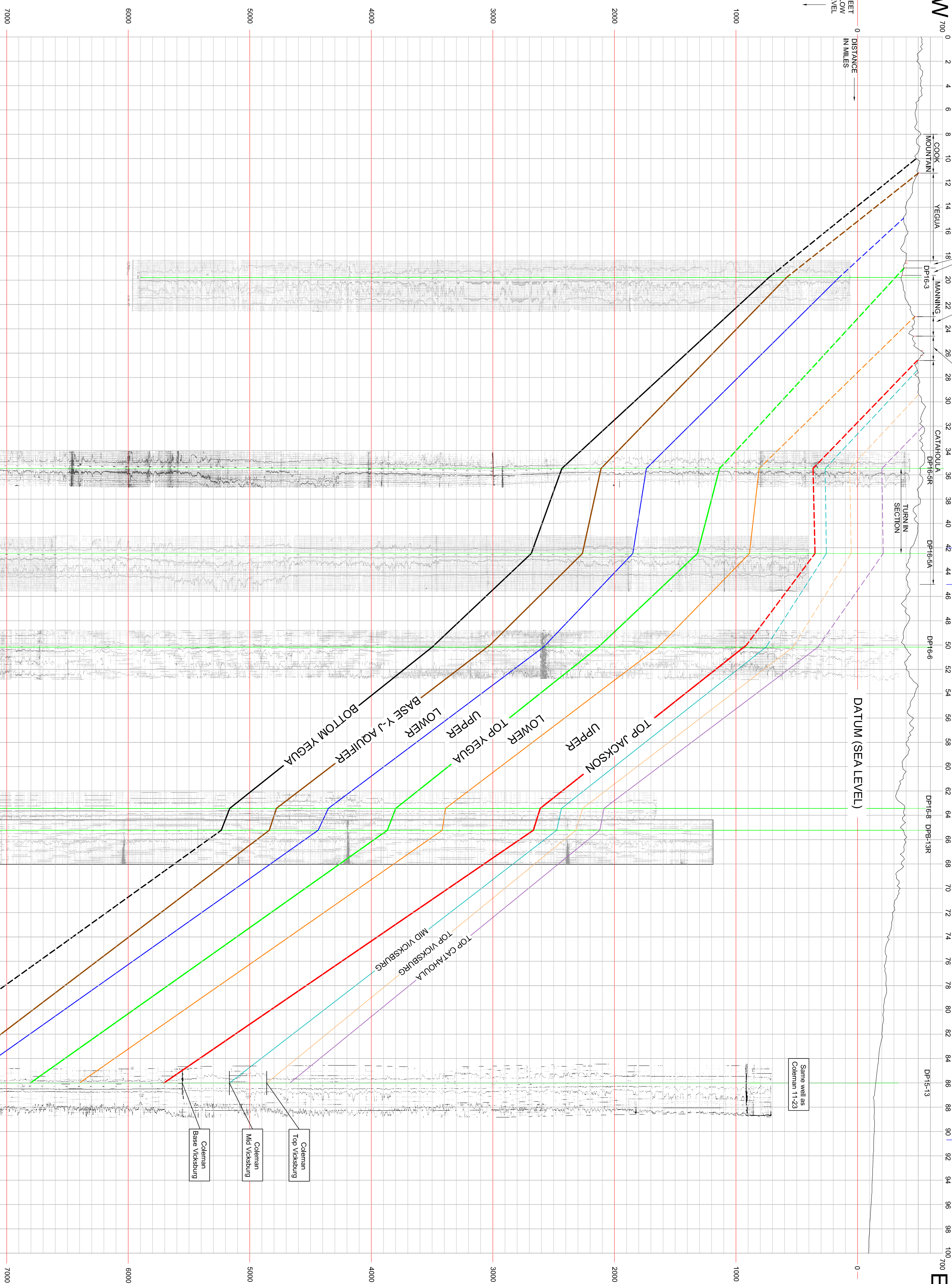


PLATE 8

Project: Texas Motor Development Board
 Title: Vicksburg - Jackson Stratum Development
 Drawn: D.P. CROSS SECTION 17
 Scale: VERTICAL SCALE = 1"=200 FT
 HORIZONTAL SCALE = 1"=25 MILES
 Date: 11/15/2007
 File: TMB\WV\CD\17.dwg

WNW

ESE

FEET
BELOW
SEA LEVEL

DISTANCE
IN MILES

LAREDO
La Salle Co.
VEGUA
McMullen Co.
FRIO
DUAL Co.
JIM WELLS Co.

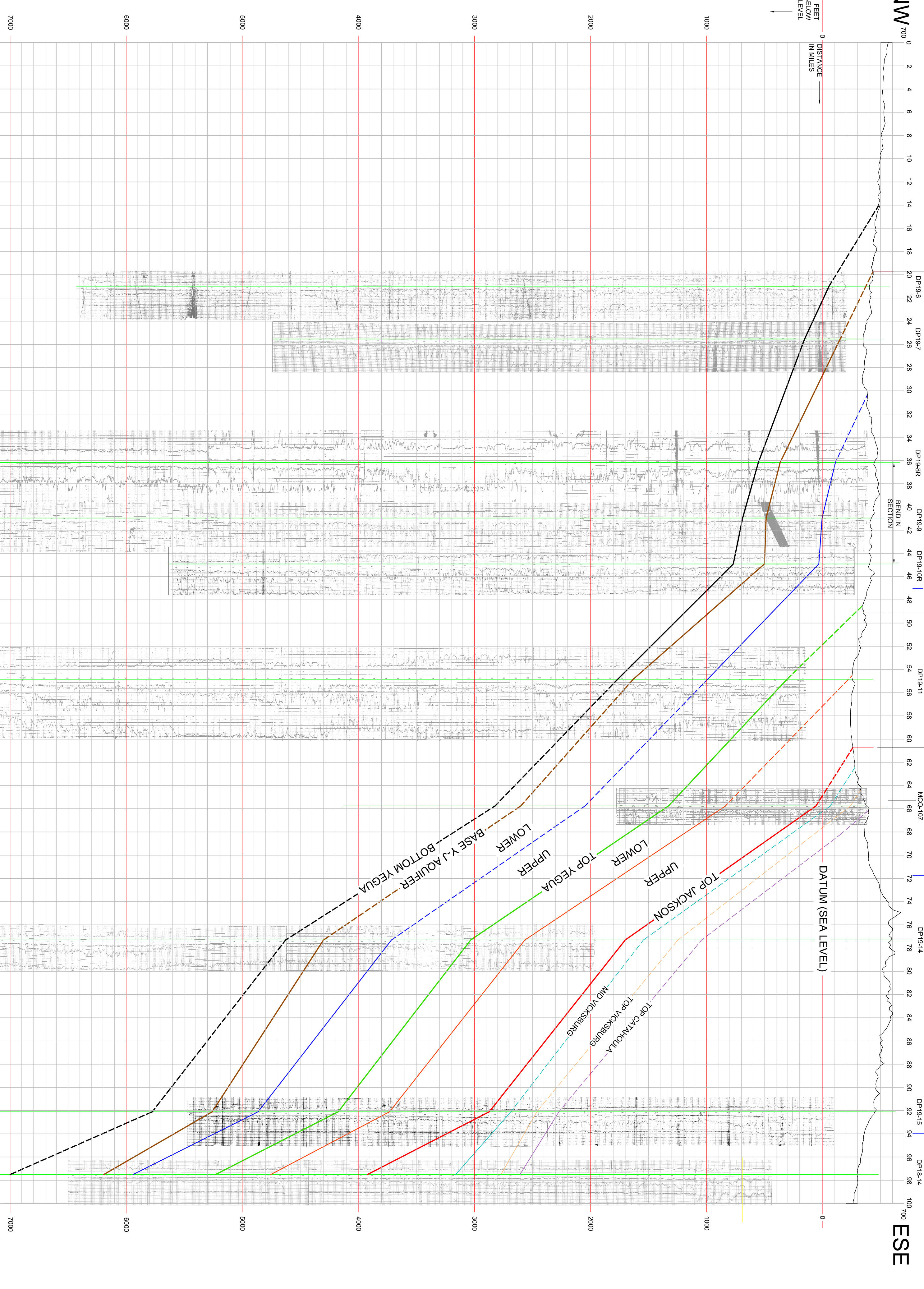


PLATE 9

Project: Tropic Water Development Board
 Venue - Jackson Stratum Development

Sheet No: DPF CROSS SECTION 20

DATE: 11/15/2011
 DRAWN BY: J. K. [Name]
 CHECKED BY: J. K. [Name]
 SCALE: VERTICAL SCALE: 1" = 200 FT
 HORIZONTAL SCALE: 1" = 2500 FT
 SHEET NO: 20 OF 20

FEET BELOW SEA LEVEL

DATUM (SEA LEVEL)

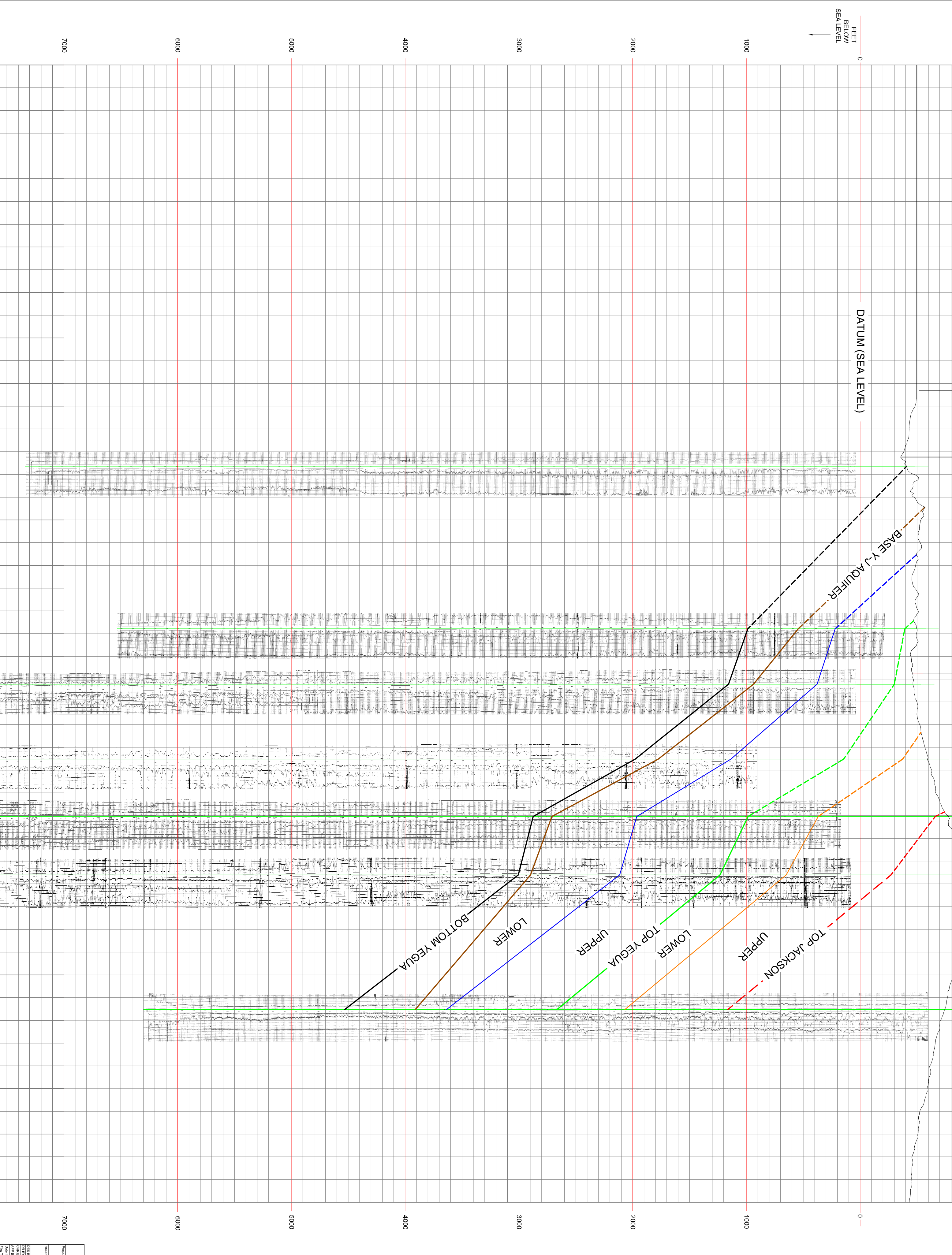


PLATE 10

Project:	Texas Water Development Board
Client:	Yegua - Jackson - Strudwick Development
Scale:	Vertical Scale: 1" = 200 FT Horizontal Scale: 1" = 2.5 MILES
Sheet:	DIP CROSS SECTION 24
Drawn By:	SK
Checked By:	SK
Date:	11/15/2022

MEXICO TEXAS

Starr Co.

Hidalgo Co.

W

E

0 FEET BELOW SEA LEVEL
DISTANCE IN MILES

0 2 4 6 8 10 12 14 16 18 20 22 24 26 28 30 32 34 36 38 40 42 44 46 48 50 52 54 56 58 60 62 64 66 68 70 72 74 76 78 80 82 84 86 88 90 92 94 96 98 100 700

LAREDO YEGUA JARROO RAMIREZ 288

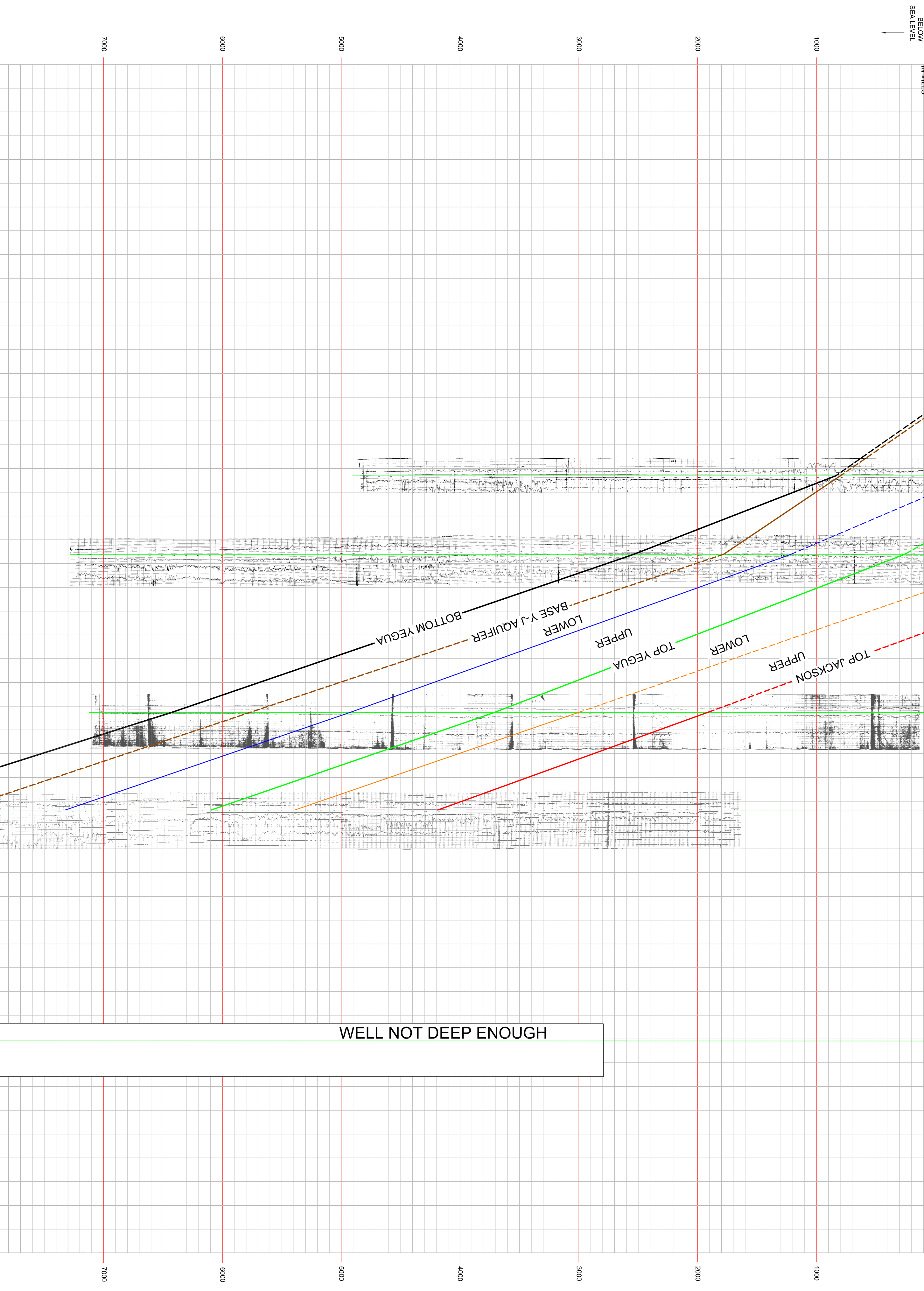
FRIO & CATAHOUA

MITCHELL MANNING 2910

D#23-7

D#23-8

DATUM (SEA LEVEL)



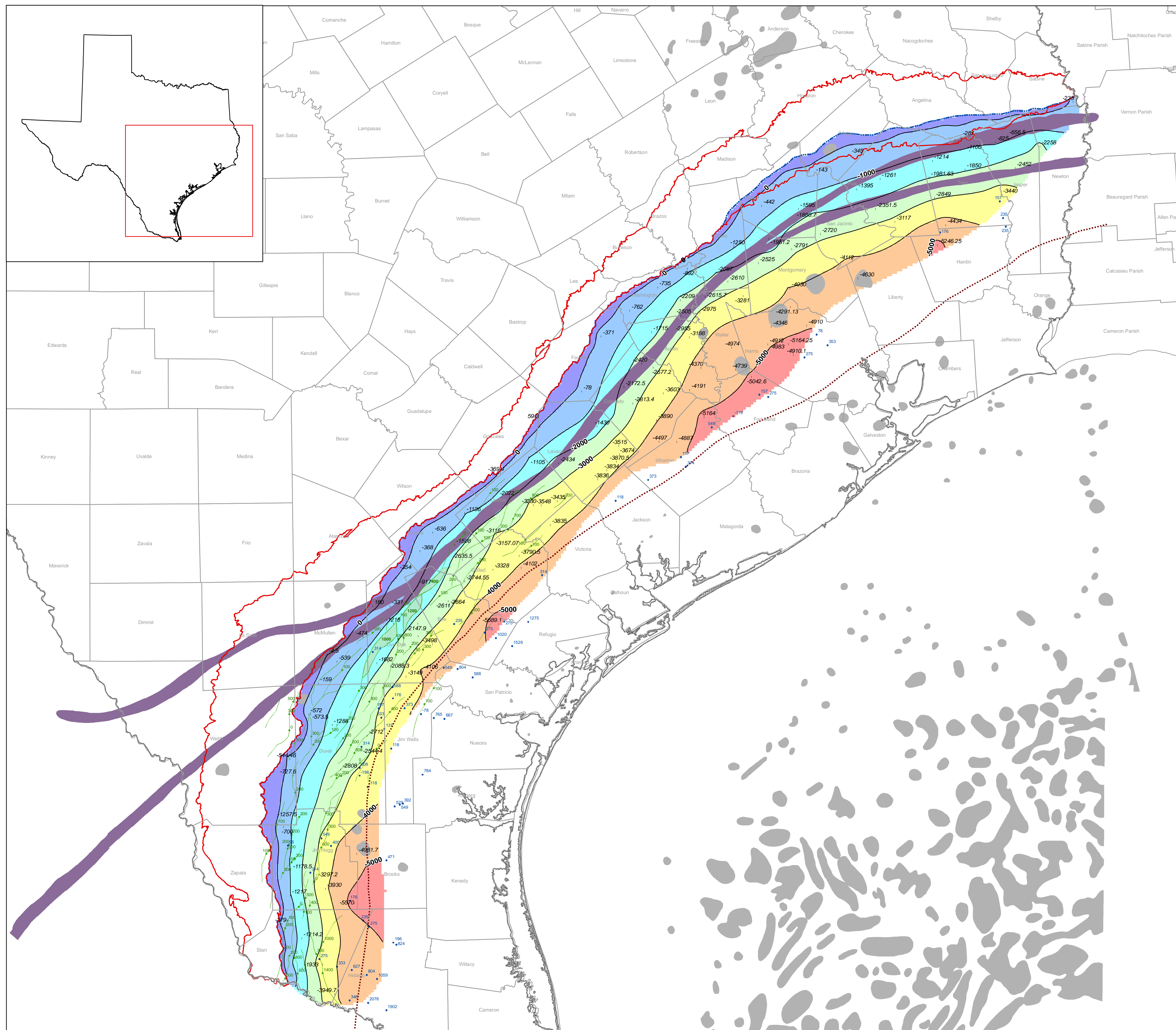
WELL NOT DEEP ENOUGH

PLATE 11

Project: Texas Water Development Board
 Yegua - Jackson Structure Development
 Well No: D#23-7
 D#23-8

DATE: 1/15/2008
 DRAWN BY: J. G. [Name]
 CHECKED BY: R. K. [Name]
 SCALE: VERTICAL SCALE: 1" = 200 FT
 HORIZONTAL SCALE: 1" = 2.5 MILES
 SHEET NO: 11 OF 11

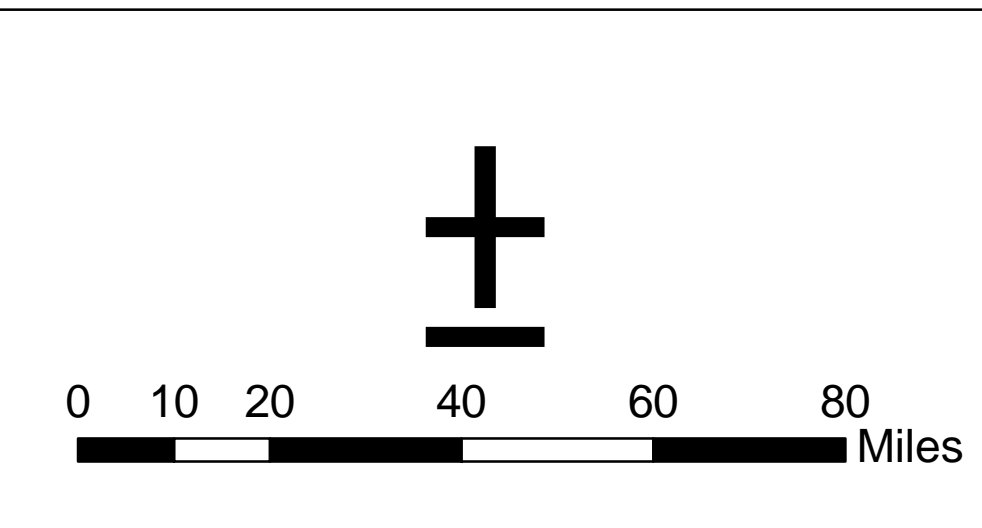
Plate 12.
Structure Map of the
Top Jackson



Legend

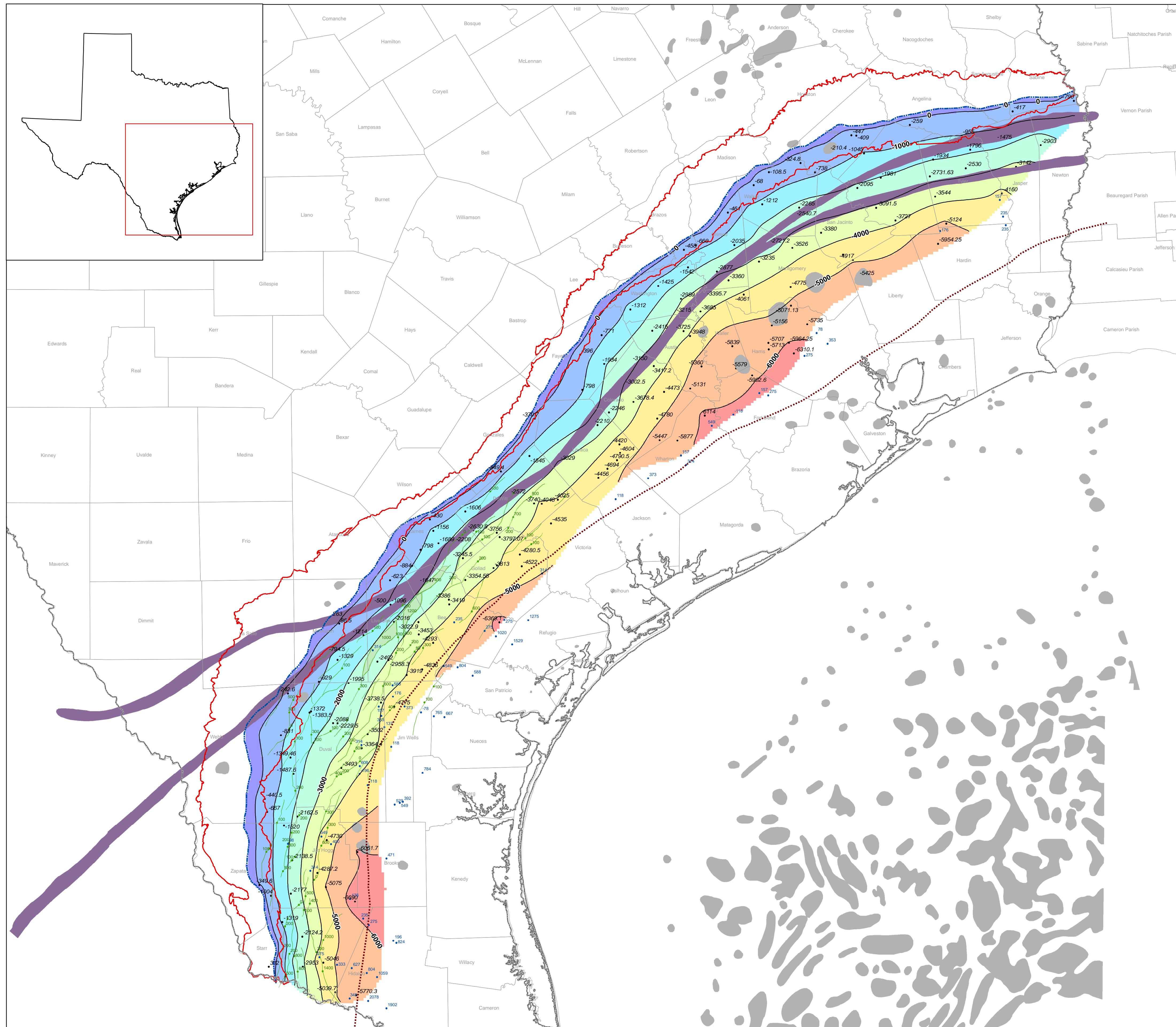
- State Line
- County Boundaries
- ▭ Yegua-Jackson
- Salt and Shale Features
- ▬ Cretaceous Shelf Margins
- Contour Line
- ⋯ Shelf Edge
- Outcrop of Mapped Surface
- Jackson Faults - Quick et al. (1977)
- Control Points (wells)
- Jackson Fault Throws (ft)**
- Fault Throw Points - Dodge and Posey (1981)
- Quick et al. (1977)
- Unclear Fault Throws - Quick et al. (1977)
- Elevation (ft amsl)**
- 1 - 1,000
- -999 - 0
- -1,999 - -1,000
- -2,999 - -2,000
- -3,999 - -3,000
- -4,999 - -4,000
- -5,650 - -5,000

Contour Interval is 1000 feet.



Source: Salt and Shelf Edges from Ewing 1991
File: 12_structure_tj.mxd

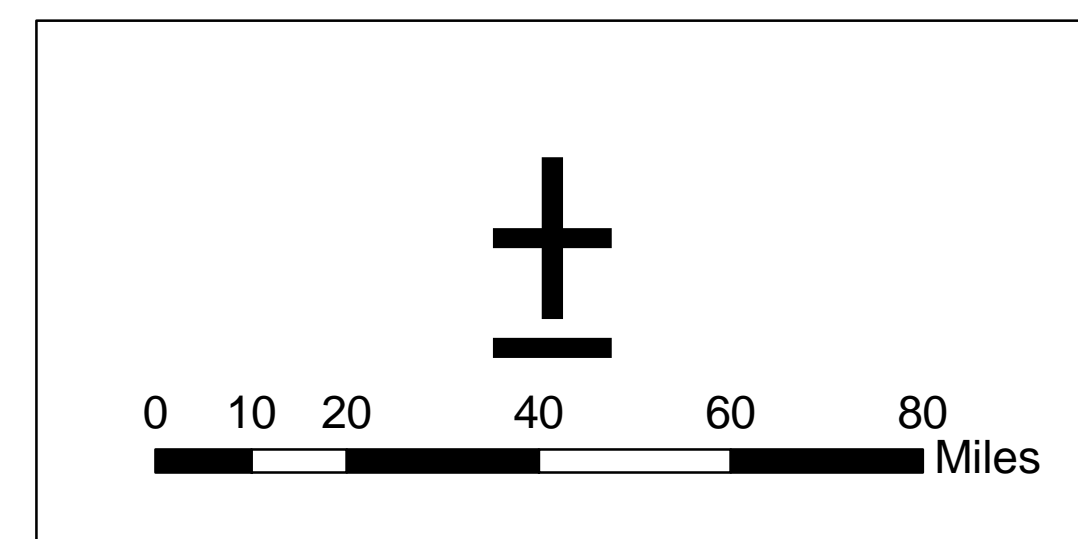
Plate 13.
Structure Map of the
Top of the Lower Jackson



Legend

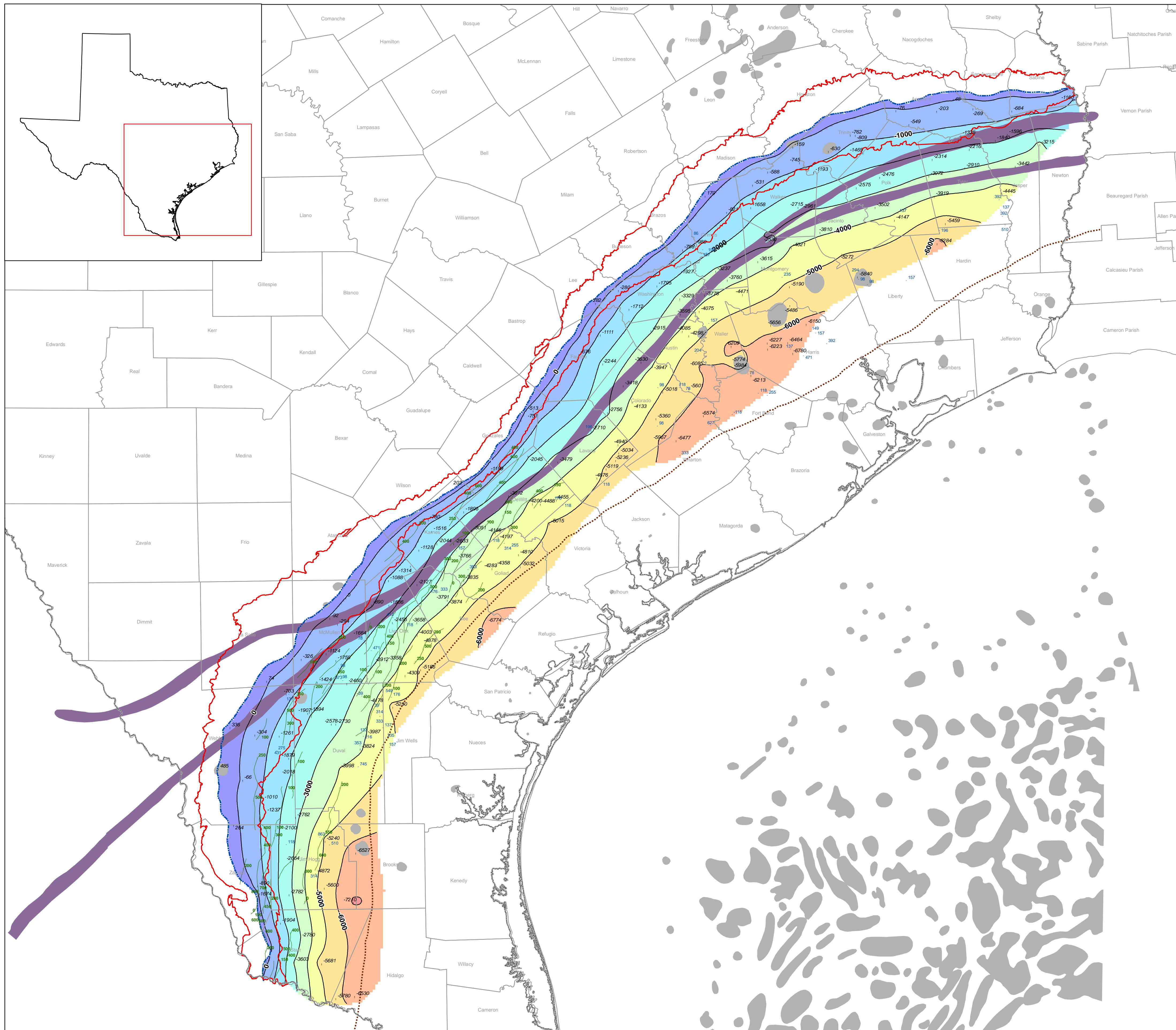
- Yegua-Jackson
- State Line
- County Boundaries
- Salt and Shale Features
- Cretaceous Shelf Margins
- Contour Line
- Shelf Edge
- Outcrop of Mapped Surface
- Jackson Faults - Quick et al. (1977)
- Control Points (wells)
- Yegua Fault Throws (ft)**
- Dodge and Posey (1981)
- Quick et al. (1977)
- Unclear Fault Throws - Quick et al. (1977)
- Elevation (ft amsl)**
- 1 - 1,000
- 999 - 0
- 1,999 - -1,000
- 2,999 - -2,000
- 3,999 - -3,000
- 4,999 - -4,000
- 5,999 - -5,000
- 6,625 - -6,000

Contour Interval is 1000 feet.



Source: Salt and Shelf Edges from Ewing 1991
File: 13_structure_lj.mxd

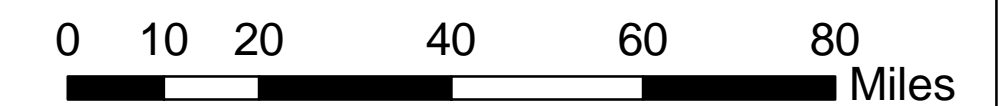
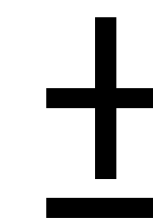
Plate 14.
Structure Map of the
Top Yegua



Legend

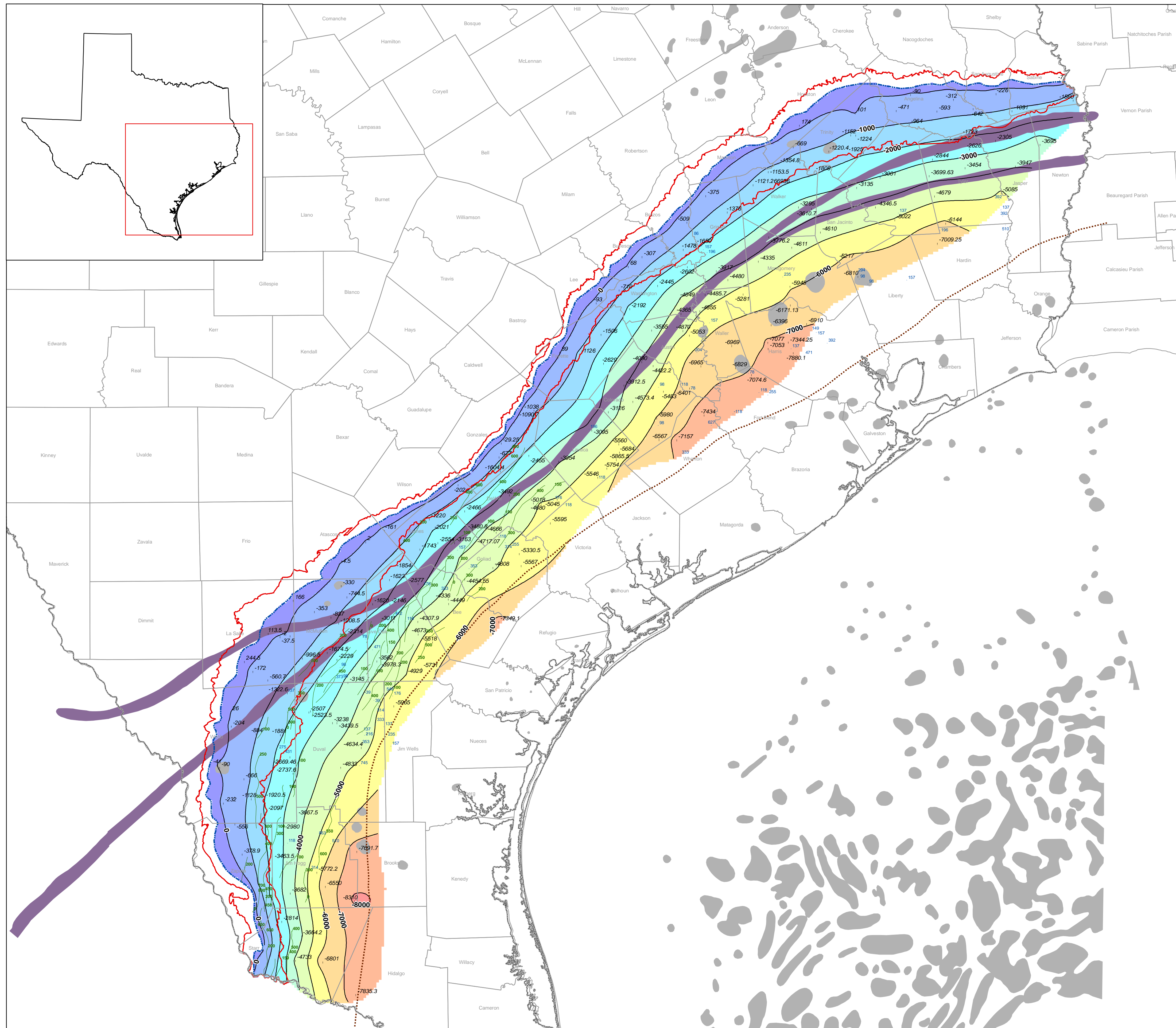
- Yegua-Jackson
 - State Line
 - County Boundaries
 - Salt and Shale Features
 - Cretaceous Shelf Margins
 - Contour Line
 - Shelf Edge
 - Outcrop of Mapped Surface
 - Yegua Faults - Quick et al. (1977)
 - Control Points (wells)
- Yegua Fault Throws (ft)**
- Dodge and Posey (1981)
 - Quick et al. (1977)
- Elevation (ft amsl)**
- 1 - 1,000
 - 999 - 0
 - 1,999 - -1,000
 - 2,999 - -2,000
 - 3,999 - -3,000
 - 4,999 - -4,000
 - 5,999 - -5,000
 - 6,999 - -6,000
 - 7,999 - -7,000

Contour Interval is 1000 feet.



Source: Salt and Shelf Edges from Ewing 1991
 File: 14_structure_ty.mxd

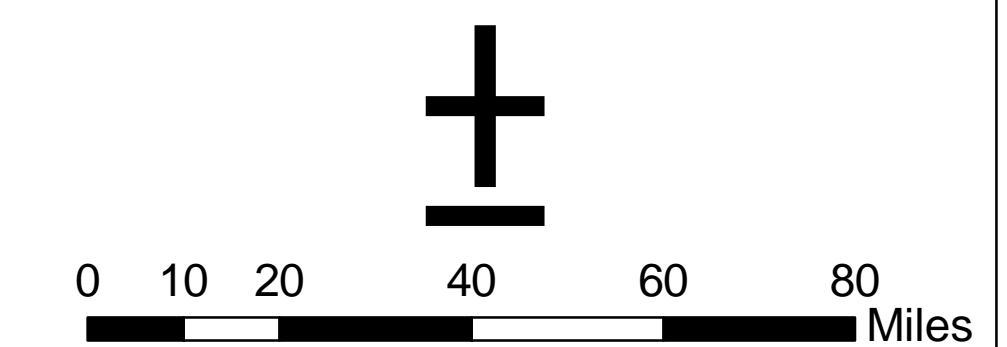
Plate 15.
Structure Map of the
Top of the Lower Yegua



Legend

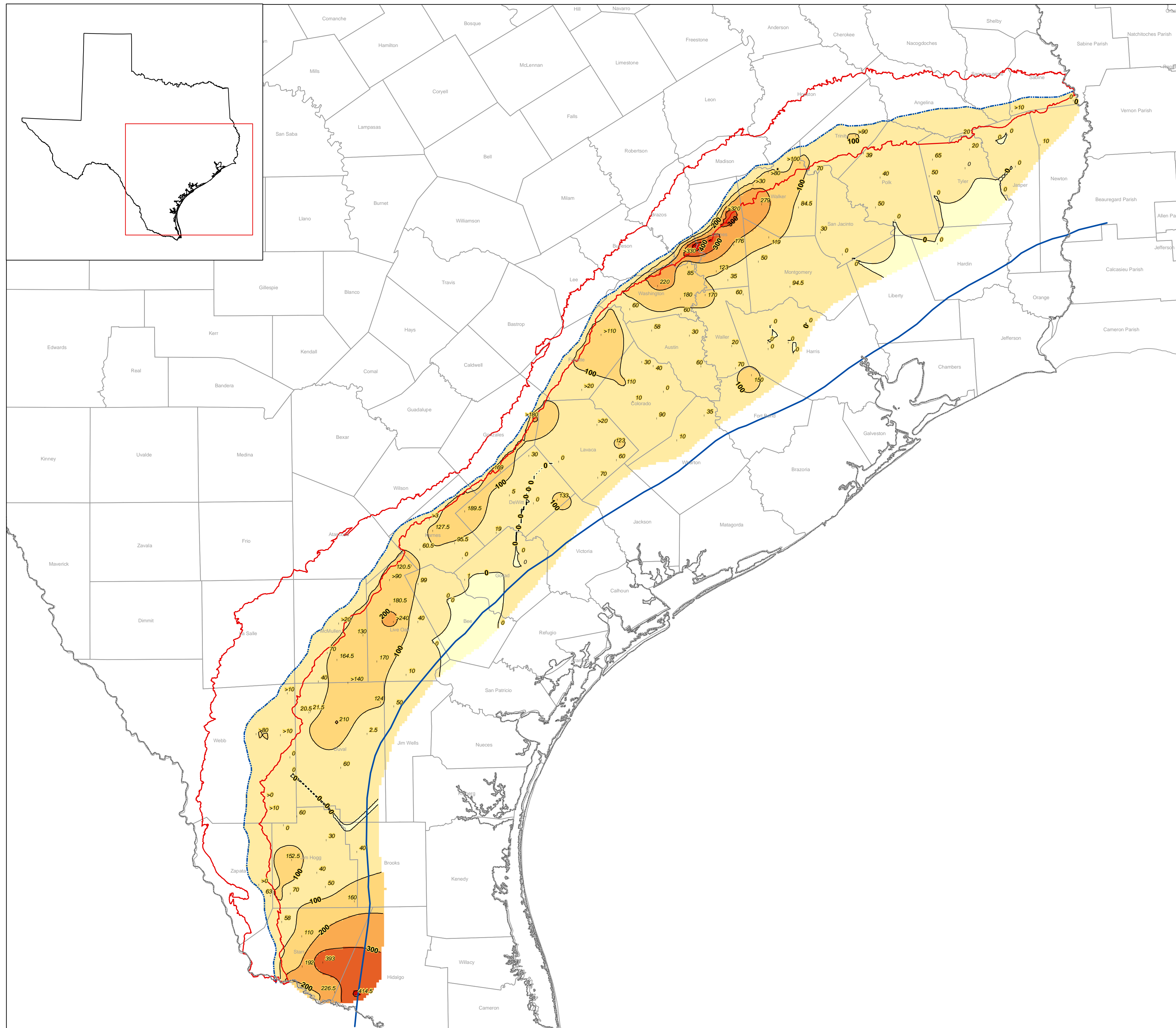
- ▭ Yegua-Jackson
- State Line
- County Boundaries
- Salt and Shale Features
- Cretaceous Shelf Margins
- Contour Line
- Shelf Edge
- Outcrop of Mapped Surface
- Yegua Faults - Quick et al. (1977)
- Control Points (wells)
- Yegua Fault Throws (ft)**
- Dodge and Posey (1981)
- Quick et al. (1977)
- Elevation (ft amsl)**
- 1 - 1,000
- 999 - 0
- 1,999 - -1,000
- 2,999 - -2,000
- 3,999 - -3,000
- 4,999 - -4,000
- 5,999 - -5,000
- 6,999 - -6,000
- 7,999 - -7,000
- 8,226 - -8,000

Contour Interval is 1000 feet.



Source: Salt and Shelf Edges from Ewing 1991
 File: 15_structure_tly.mxd

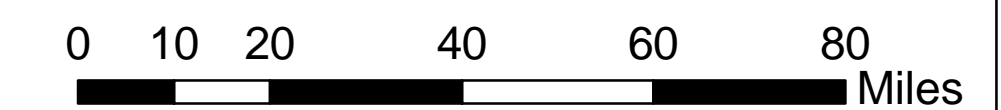
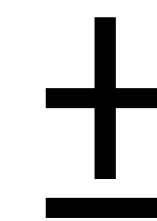
Plate 17.
Net Sand Isopach Map of the
Upper Jackson Layer



Legend

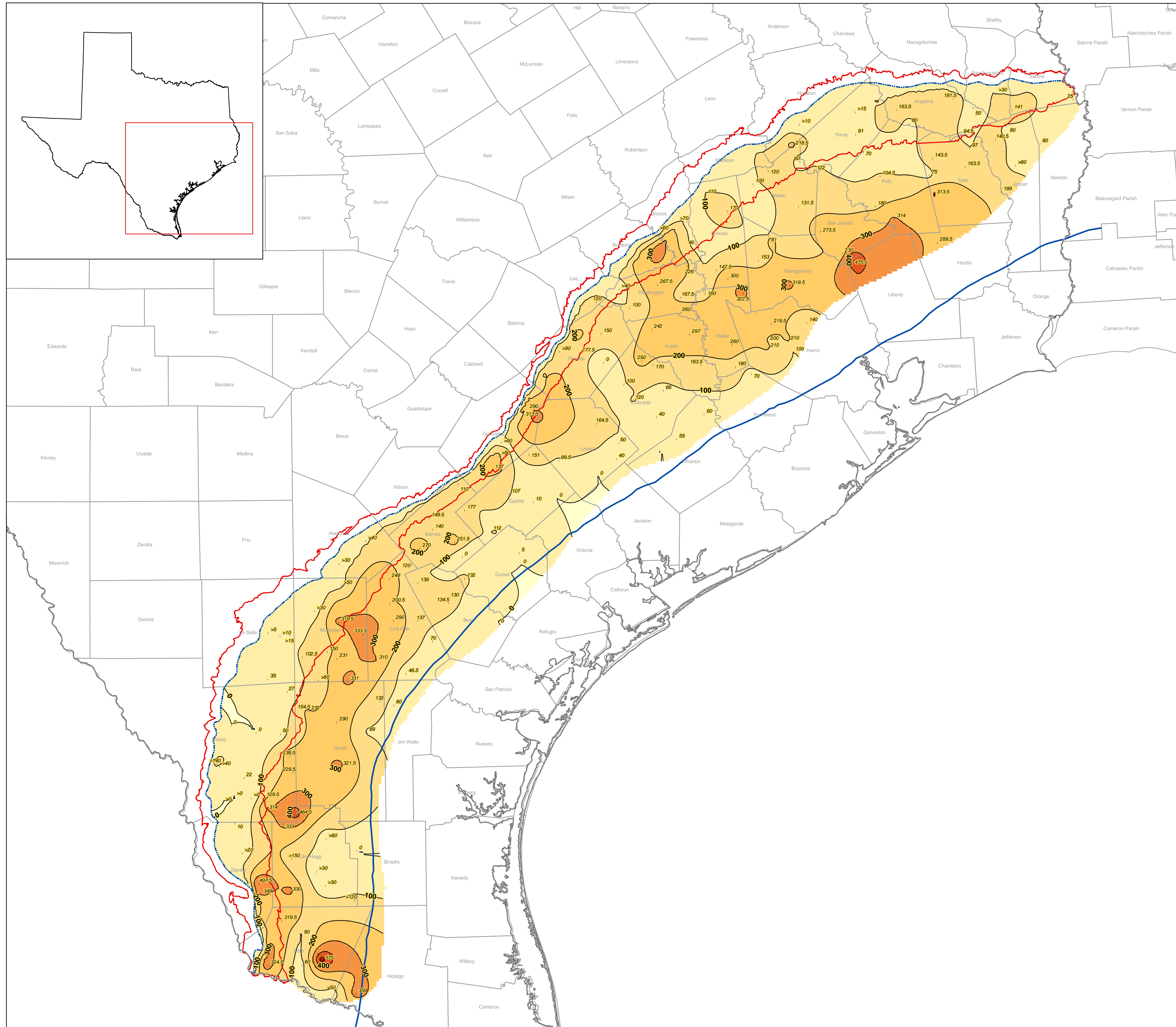
- Yegua-Jackson
 - State Line
 - County Boundaries
 - Shelf Edge
 - Outcrop of Mapped Surface
 - Contour Line
 - Well Locations
- Sand Thickness (feet)**
- 0
 - 1 - 100
 - 101 - 200
 - 201 - 300
 - 301 - 400
 - 401 - 500

Contour Interval is 50 feet.



Source: N/A
 File: sandthickness_tj.mxd

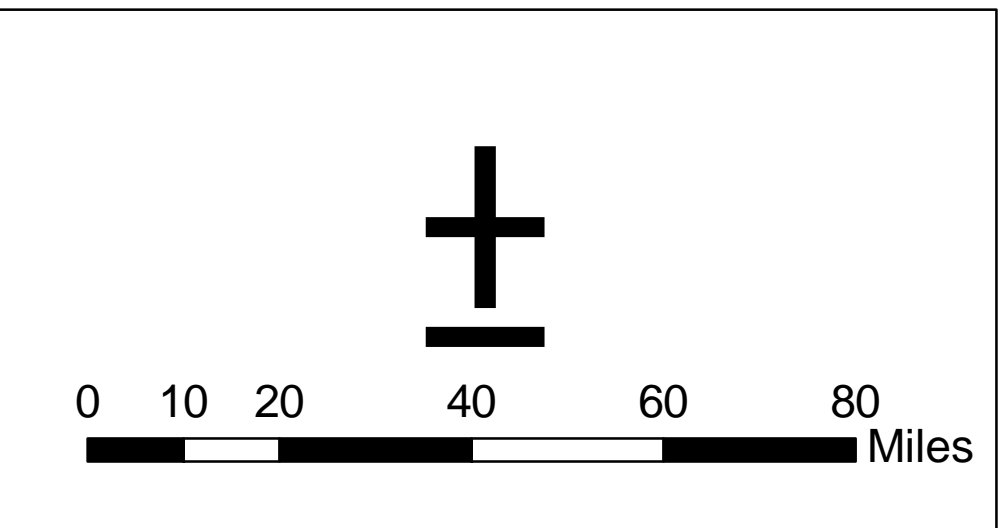
Plate 19.
Net Sand Isopach Map of the
Upper Yegua Layer



Legend

- State Line
 - County Boundaries
 - ▭ Yegua-Jackson
 - Shelf Edge
 - - - Outcrop of Mapped Surface
 - Contour Line
 - Well Locations
- Sand Thickness (feet)**
- 0
 - 1 - 100
 - 101 - 200
 - 201 - 300
 - 301 - 400
 - 401 - 500
 - 501 - 600

Contour Interval is 100 feet.



Source: N/A
 File: sandthickness_ty.mxd

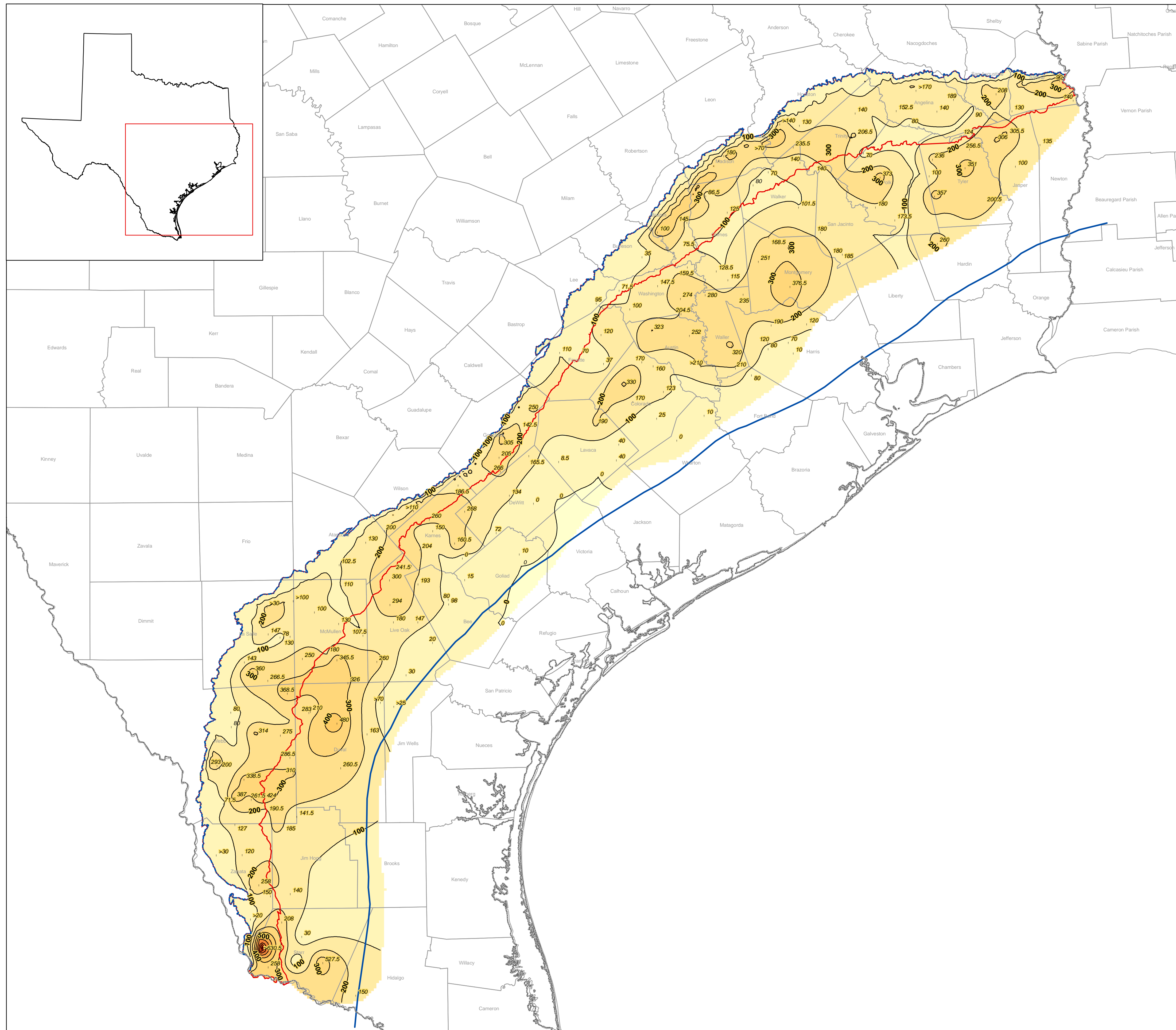


Plate 20.
Net Sand Isopach Map of the
Lower Yegua Layer

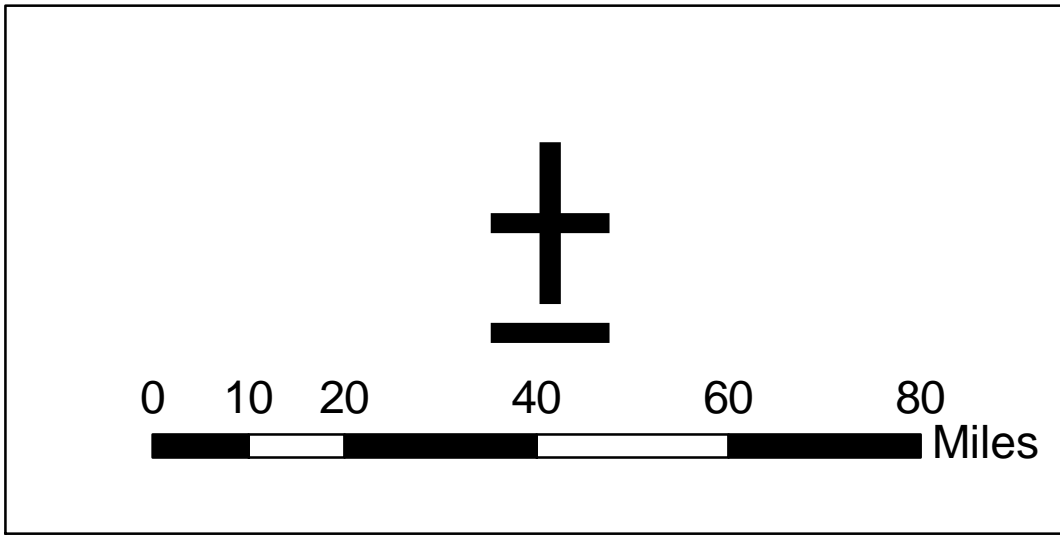
Legend

- Yegua-Jackson
- State Line
- County Boundaries
- Shelf Edge
- Outcrop of Mapped Surface
- Contour Line
- Well Locations

Sand Thickness (feet)

- 0
- 1 - 100
- 101 - 200
- 201 - 300
- 301 - 400
- 401 - 500
- 501 - 600
- 601 - 700
- 701 - 800
- 801 - 900
- 901 - 1,000

Contour Interval is 100 feet.



Source: N/A
 File: sandthickness_ly.mxd