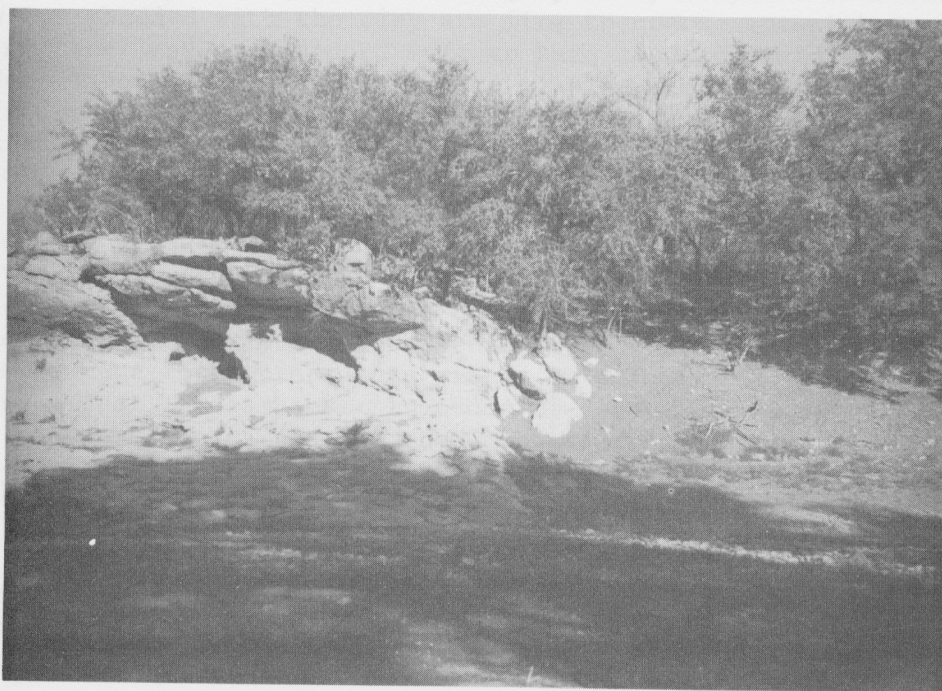




A. CONCRETIONS FROM THE SAN MIGUEL FORMATION ON THE EAST SIDE OF CHAPOTE CREEK, 0.8 MILE NORTH OF MAVERICK COUNTY



B. FAULT(?) CONTACT BETWEEN THE ANACACHO LIMESTONE AND THE SAN MIGUEL FORMATION ON THE EAST BANK OF MUELA CREEK, 1.6 MILES NORTH OF MAVERICK COUNTY