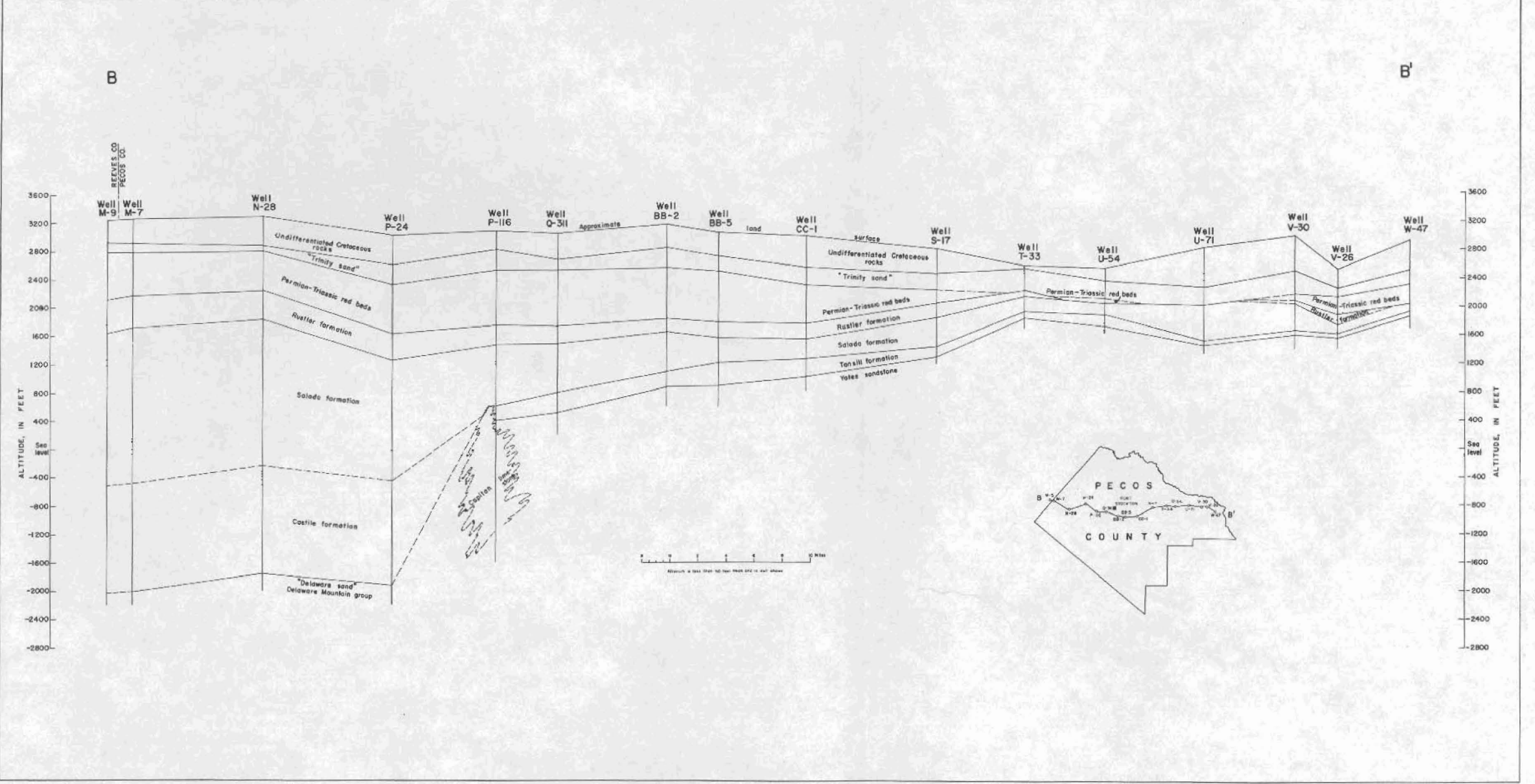
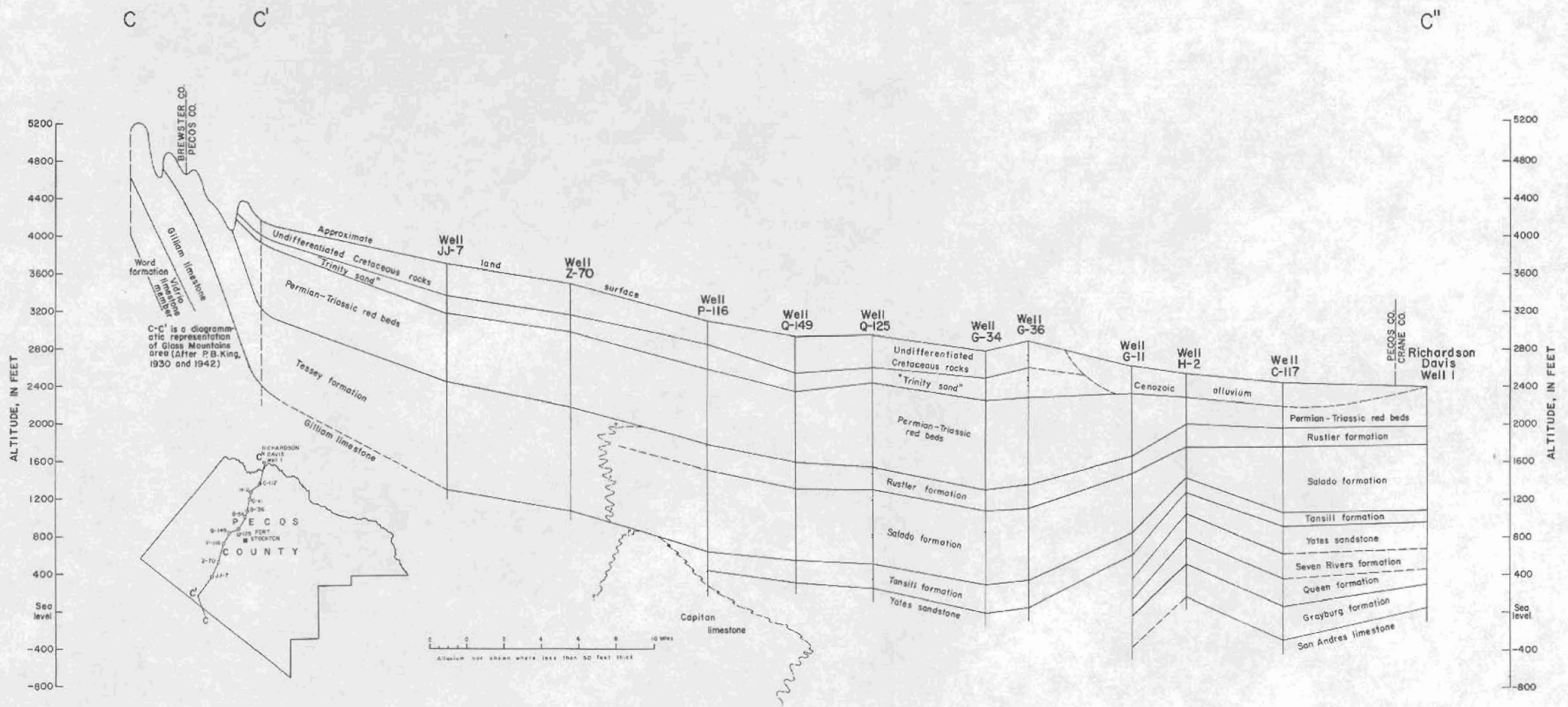


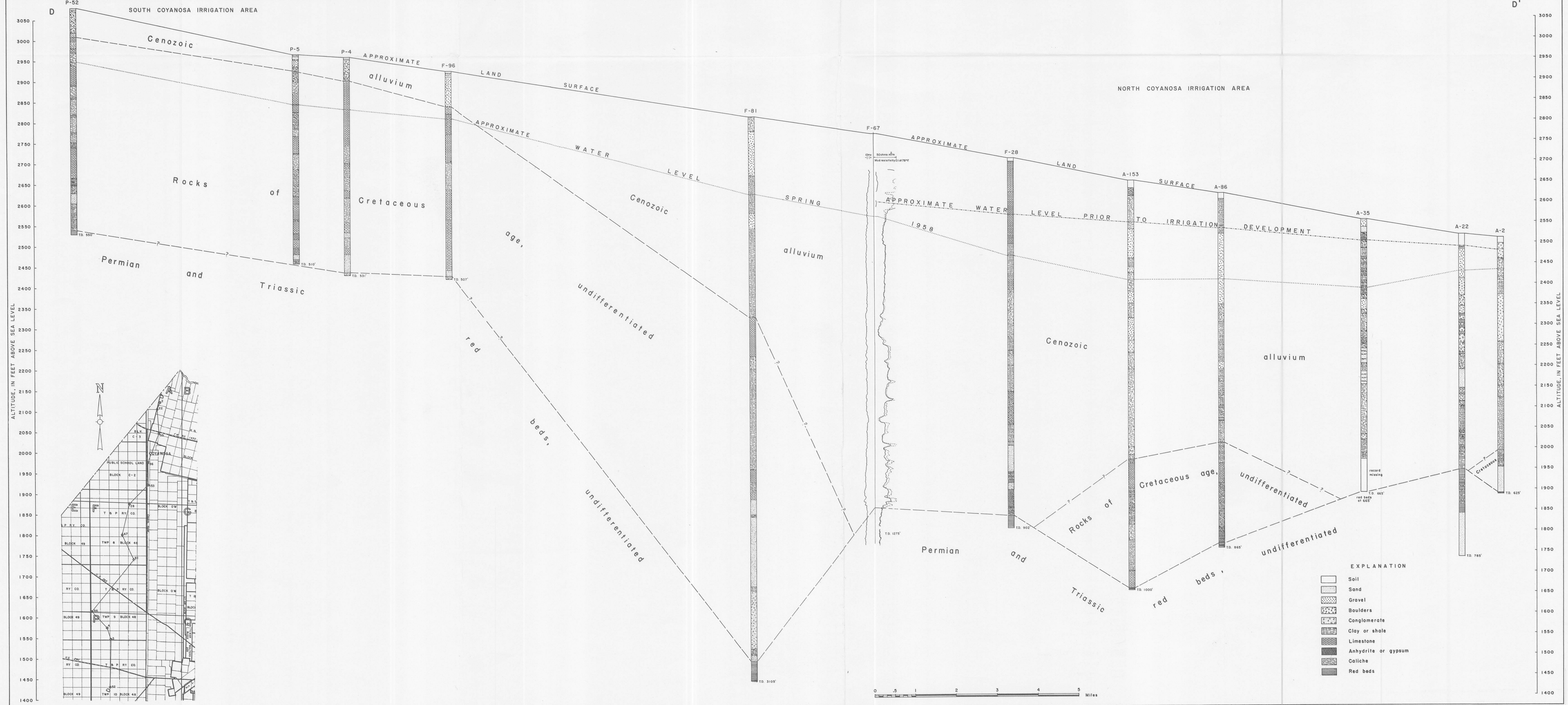
GEOLOGIC SECTION A-A', PECOS COUNTY



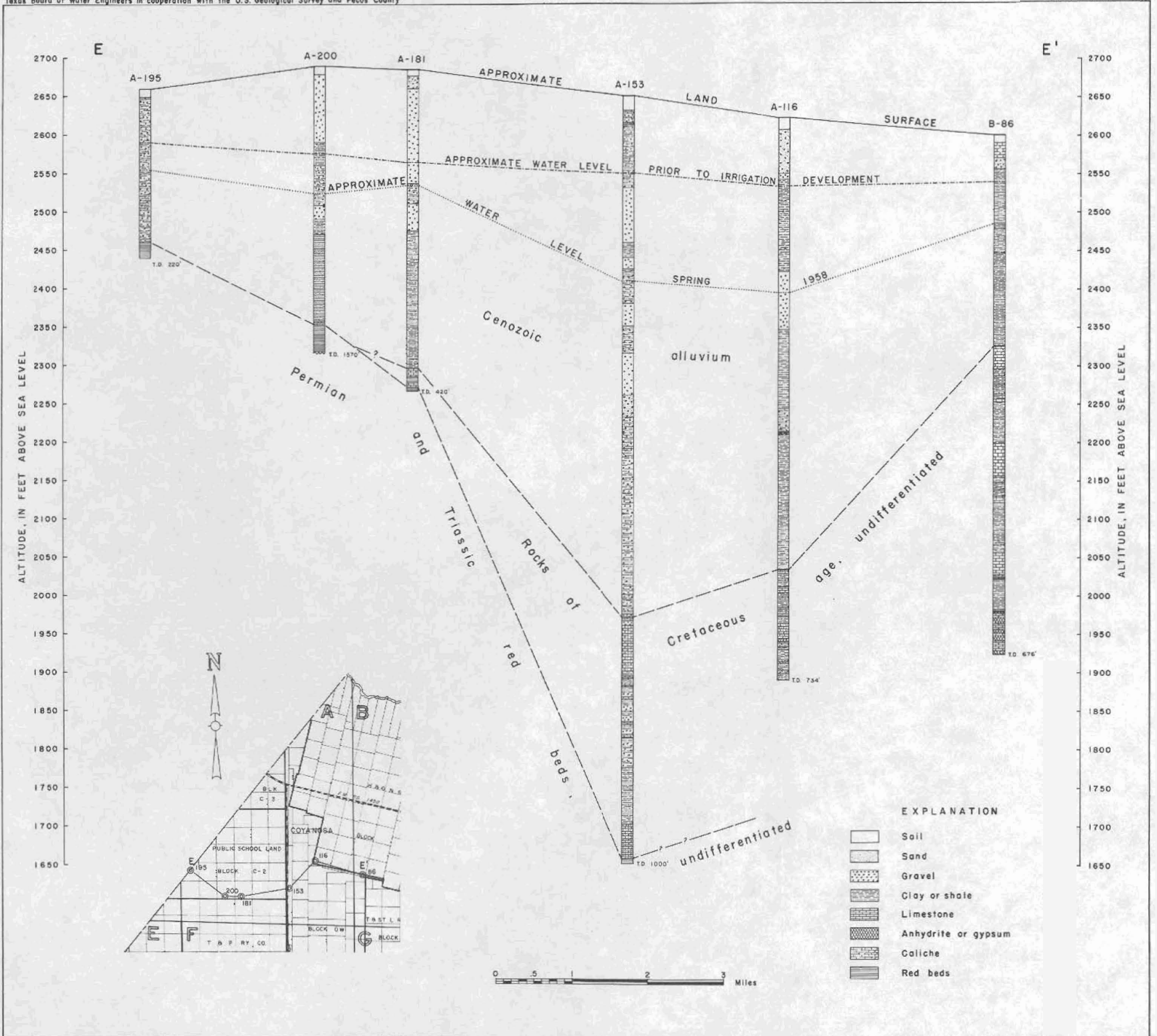
GEOLOGIC SECTION B-B', PECOS COUNTY



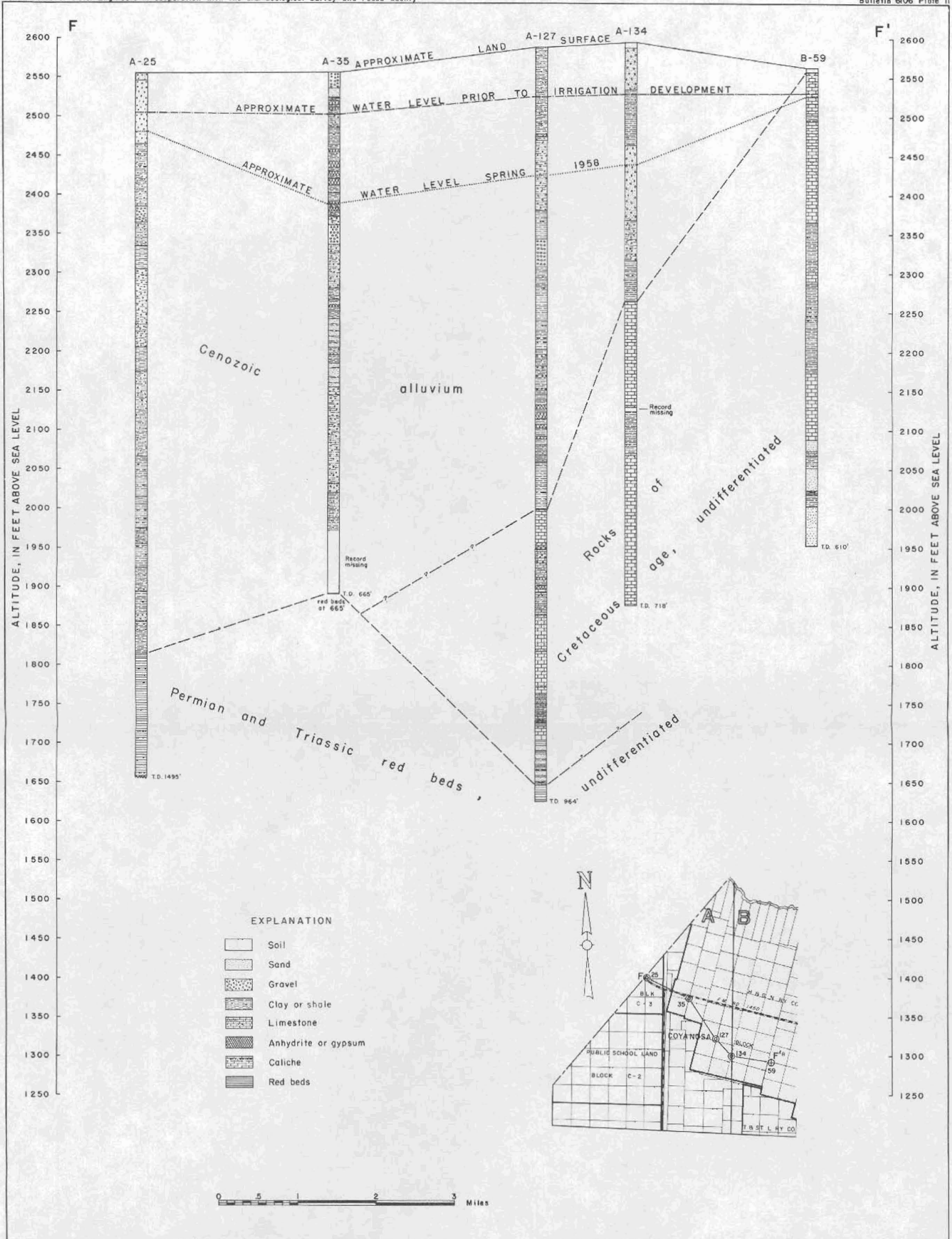
GEOLOGIC SECTION C-C'-C'' PECOS COUNTY



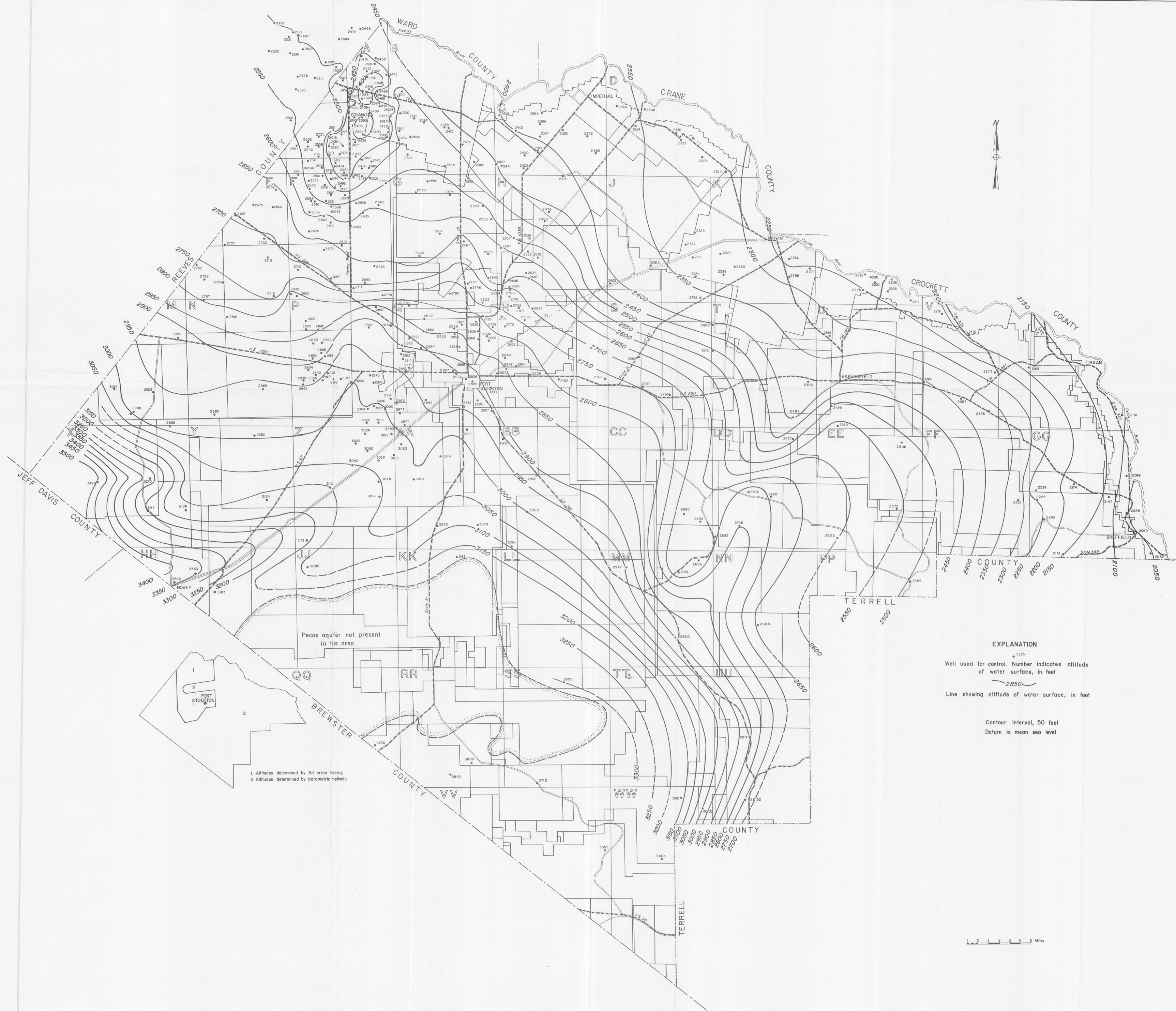
GEOLOGIC SECTION D-D', SOUTH COYANOSA AND NORTH COYANOSA IRRIGATION AREAS, PECOS COUNTY



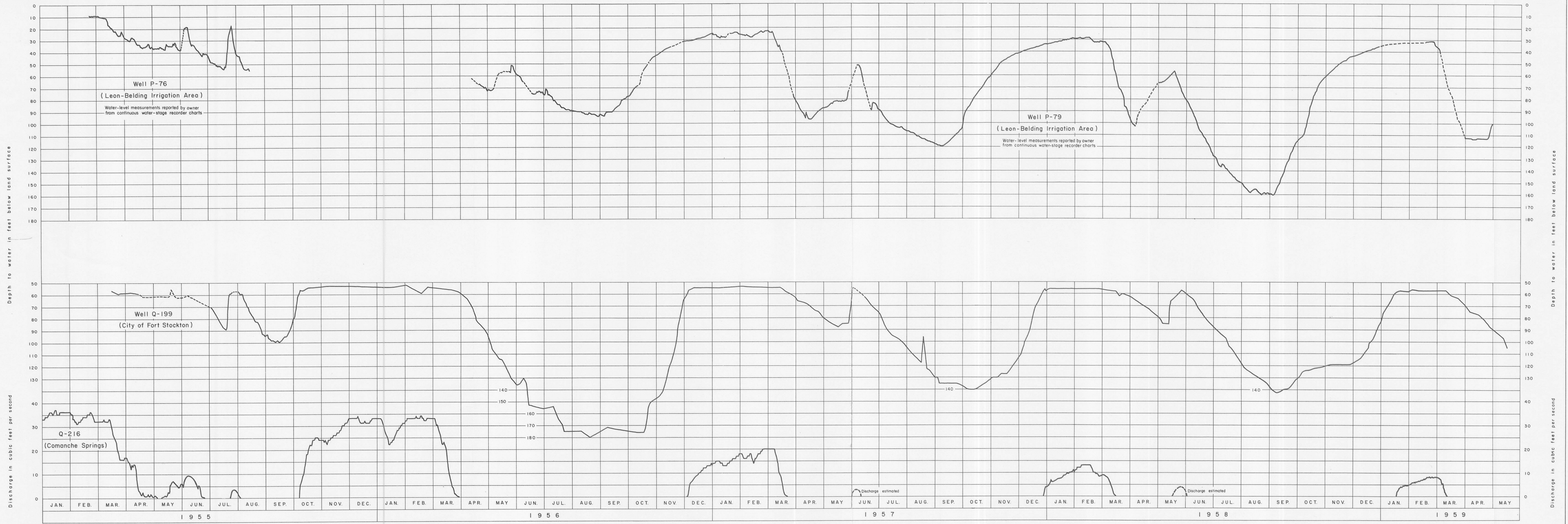
GEOLOGIC SECTION E-E', NORTH COYANOSA IRRIGATION AREA, PECOS COUNTY



GEOLOGIC SECTION F-F', NORTH COYANOSA IRRIGATION AREA, PECOS COUNTY

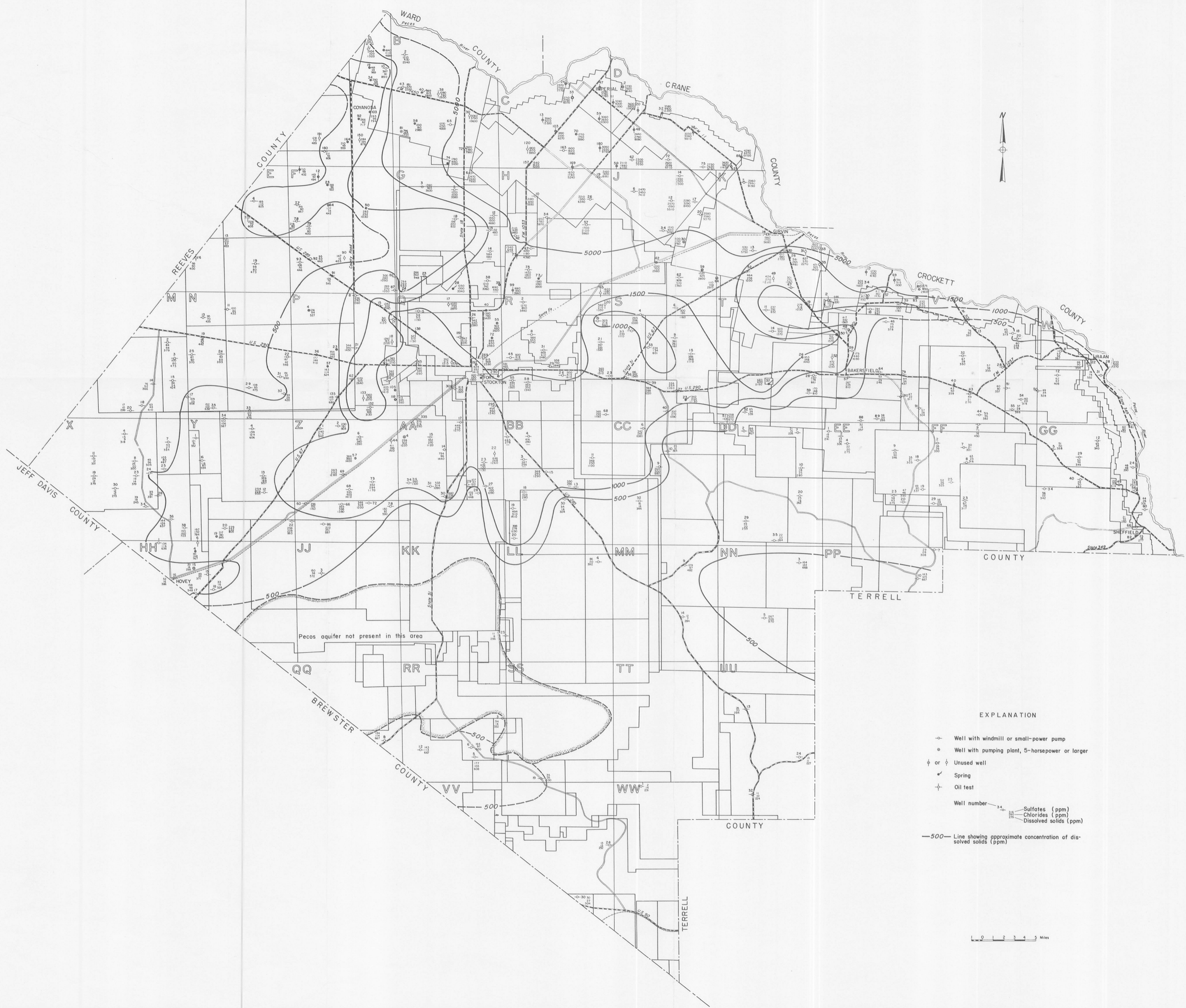


MAP SHOWING APPROXIMATE ALTITUDE OF WATER IN WELLS IN THE PECOS AQUIFER, JANUARY 1958, PECOS COUNTY

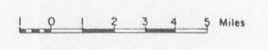


HYDROGRAPHS OF WELLS P-76, P-79 AND Q-199, AND THE DISCHARGE FROM SPRING Q-216, PECOS COUNTY





- EXPLANATION
- Well with windmill or small-power pump
  - ⊙ Well with pumping plant, 5-horsepower or larger
  - ⊕ or ⊖ Unused well
  - ⊕ Spring
  - ⊕ Oil test
  - Well number — Sulfates (ppm)  
— Chlorides (ppm)  
— Dissolved solids (ppm)
  - 500 — Line showing approximate concentration of dissolved solids (ppm)



MAP SHOWING SULFATE, CHLORIDE AND DISSOLVED SOLIDS IN WATER OF PECOS AQUIFER, PECOS COUNTY



**EXPLANATION**

○ 2372 ○ 2464  
Well used for control. Open symbol indicates that well is not shown on Figure 2. Number indicates altitude of top of "Trinity sand"

— 2500 —  
Line showing altitude of top of "Trinity sand"

$\frac{U}{D}$   
Fault, U, upthrown side; D, downthrown side

Contour interval, 100 feet  
Datum is mean sea level

0 1 2 3 4 5 Miles

MAP SHOWING CONFIGURATION OF THE TOP OF THE "TRINITY SAND" IN PECOS COUNTY