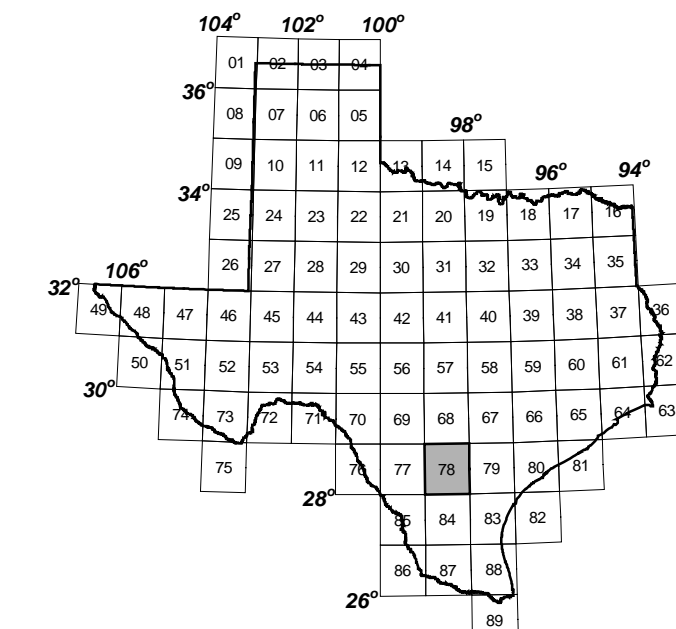


FREESTONE COUNTY WITH WATER WELL NUMBERING GRID

Explanation of Water Well Numbering System

LOCATION OF GRID CELL
78-28-5

78 - 1-degree quadrangle
28 - 7 1/2 minute quadrangle
5 - 2 1/2 minute quadrangle



WELL-NUMBERING SYSTEM
To facilitate the location of wells and avoid duplication of well numbers, a statewide well-numbering system has been adopted. It is based on division of the State into a grid of 1-degree quadrangles formed by degrees of latitude and longitude and the repeated division of these quadrangles into smaller ones as shown on the following diagram.
Each 1-degree quadrangle is divided into sixty-four 7 1/2-minute quadrangles, each of which is further divided into nine 2 1/2-minute quadrangles. Each 1-degree quadrangle in the State has been assigned an identification number. The 7 1/2-minute quadrangles are numbered consecutively from left to right, beginning in the upper left-hand corner of the 1-degree quadrangle and the 2 1/2-minute quadrangles within each 7 1/2-minute quadrangle are similarly numbered. The first 2 digits of a well number identify the 1-degree quadrangle; the third and fourth digits, the 7 1/2-minute quadrangle; and the fifth digit identifies the 2 1/2-minute quadrangle.

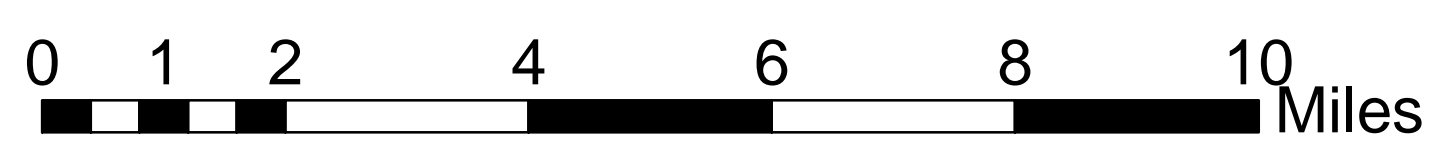
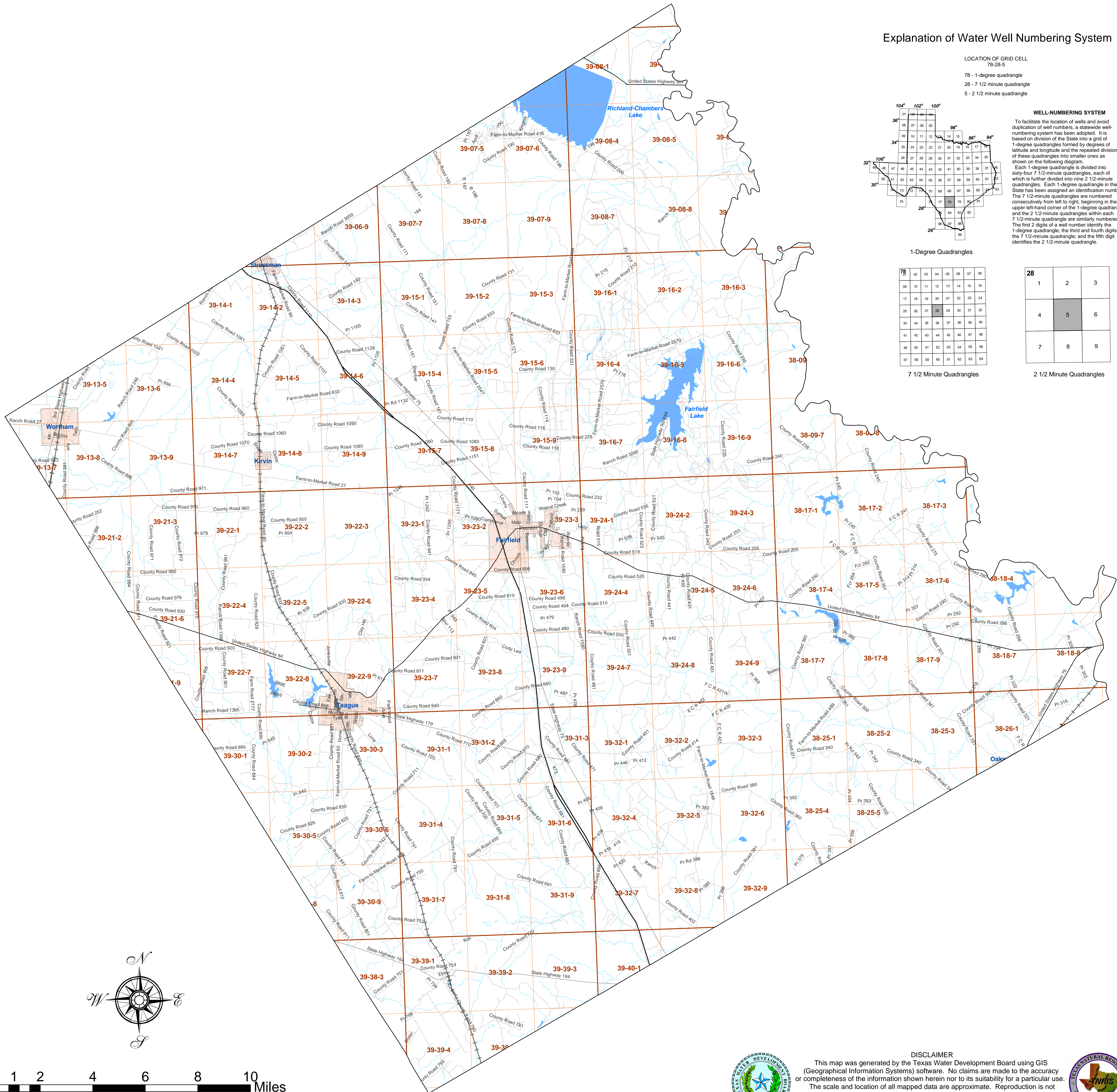
1-Degree Quadrangles

78	01	02	03	04	05	06	07	08
09	10	11	12	13	14	15	16	17
18	19	20	21	22	23	24	25	26
27	28	29	30	31	32	33	34	35
36	37	38	39	40	41	42	43	44
45	46	47	48	49	50	51	52	53
54	55	56	57	58	59	60	61	62
63	64	65	66	67	68	69	70	71
72	73	74	75	76	77	78	79	80
81	82	83	84	85	86	87	88	89
90	91	92	93	94	95	96	97	98
99	00							

7 1/2 Minute Quadrangles

28	1	2	3
4	5	6	
7	8	9	

2 1/2 Minute Quadrangles



DISCLAIMER
This map was generated by the Texas Water Development Board using GIS (Geographical Information Systems) software. No claims are made to the accuracy or completeness of the information shown herein nor to its suitability for a particular use. The scale and location of all mapped data are approximate. Reproduction is not permitted without prior written permission from the Texas Natural Resources Information Systems. To order more copies of this map, contact: TNRIS, 1700 N. Congress Av., Austin, TX 78711-3231. Phone: (512)-461-8337.



*All mapped data (except grid) is from TIGER 2000 Census data.
Map created by Mark Hayes, May 3, 2004
TWDB - GIS section