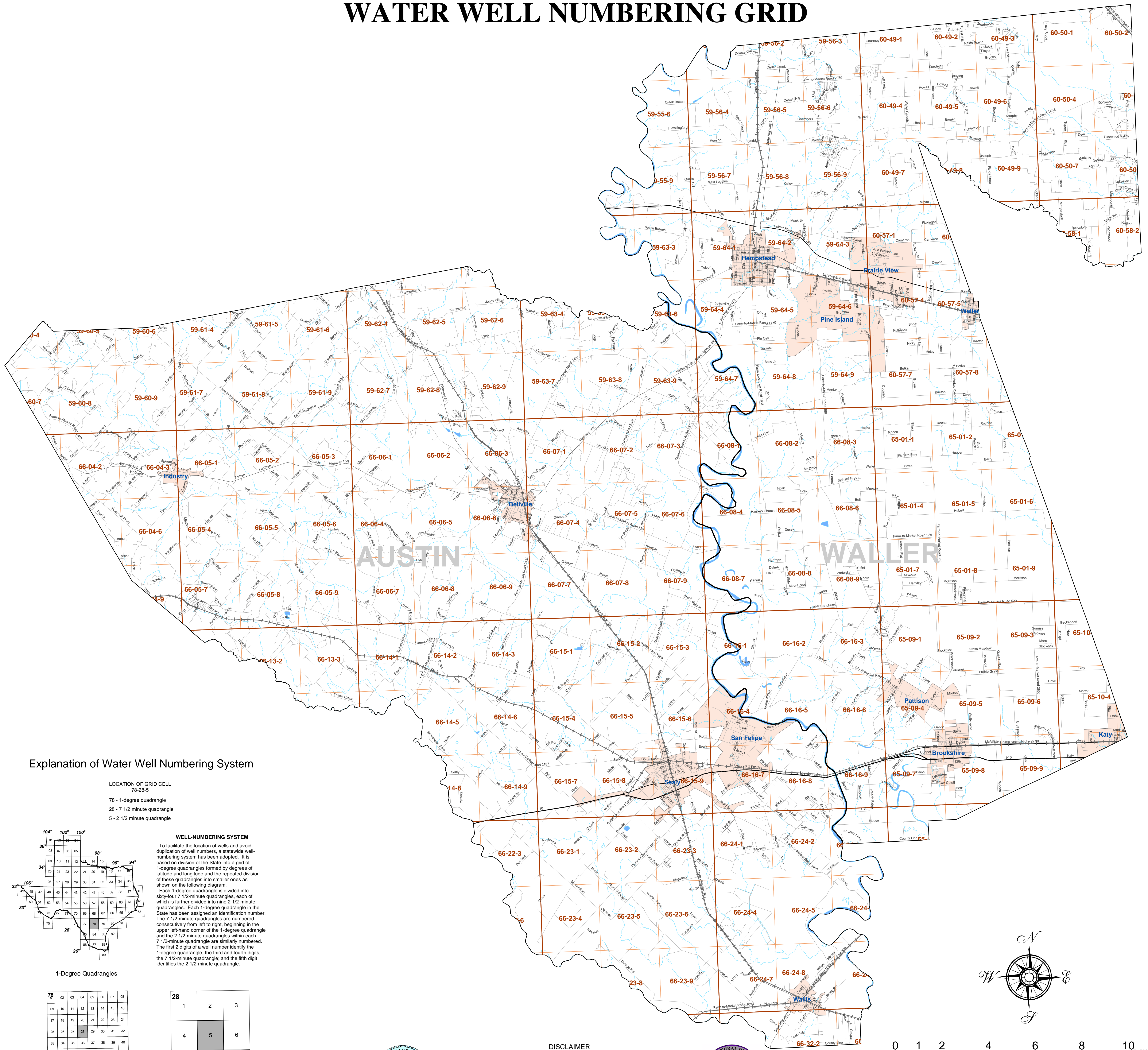


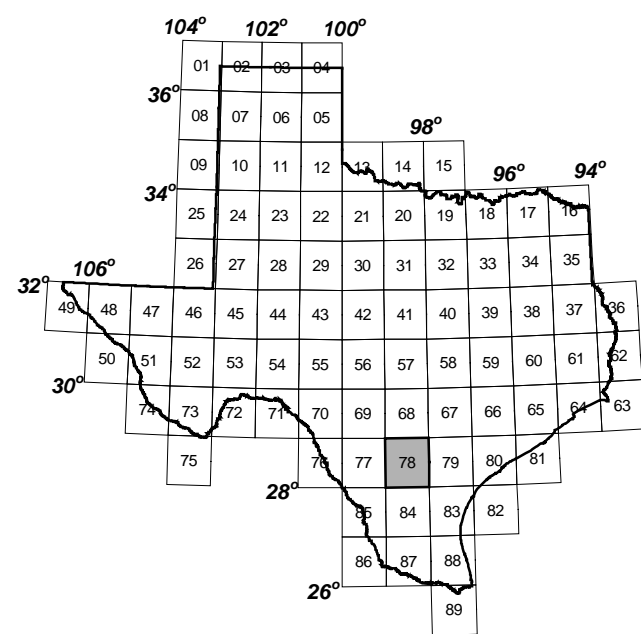
# AUSTIN & WALLER COUNTIES WITH WATER WELL NUMBERING GRID



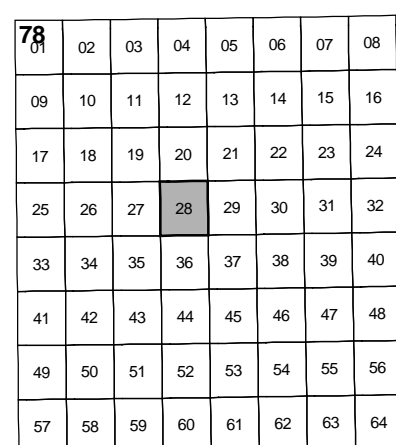
## Explanation of Water Well Numbering System

LOCATION OF GRID CELL  
78-28-5

78 - 1-degree quadrangle  
28 - 7 1/2 minute quadrangle  
5 - 2 1/2 minute quadrangle



1-Degree Quadrangles

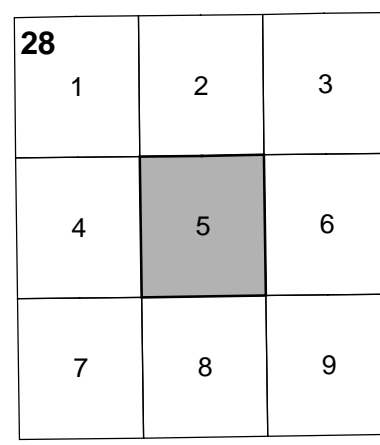


7 1/2 Minute Quadrangles

### WELL-NUMBERING SYSTEM

To facilitate the location of wells and avoid duplication of well numbers, a statewide well-numbering system has been adopted. It is based on division of the State into a grid of 1-degree quadrangles formed by degrees of latitude and longitude and the repeated division of these quadrangles into smaller ones as shown on the following diagram.

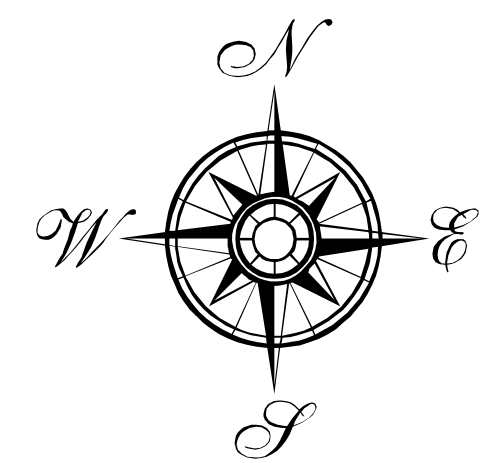
Each 1-degree quadrangle is divided into sixty-four 7 1/2-minute quadrangles, each of which is further divided into nine 2 1/2-minute quadrangles. Each 1-degree quadrangle in the State has been assigned an identification number. The 7 1/2-minute quadrangles are numbered consecutively from left to right, beginning in the upper left-hand corner of the 1-degree quadrangle and the 2 1/2-minute quadrangles within each 7 1/2-minute quadrangle are similarly numbered. The first 2 digits of a well number identify the 1-degree quadrangle; the third and fourth digits, the 7 1/2-minute quadrangle; and the fifth digit identifies the 2 1/2-minute quadrangle.



2 1/2 Minute Quadrangles



DISCLAIMER  
This map was generated by the Texas Water Development Board using GIS (Geographical Information Systems) software. No claims are made to the accuracy or completeness of the information shown herein nor to its suitability for a particular use. The scale and location of all mapped data are approximate. Reproduction is not permitted without prior written permission from the Texas Natural Resources Information Systems. To order more copies of this map, contact: TNRIS, 1700 N. Congress Av., Austin, TX 78711-3231. Phone: (512)-461-8337.



\*All mapped data (except grid) is from TIGER 2000 Census data.  
Map created by Mark Hayes, May 11, 2004  
TWDB - GIS section