



Figure 6 Contours (feet)

-  594
-  590
-  585
-  580
-  575
-  570
-  565
-  560
-  555
-  550
-  545

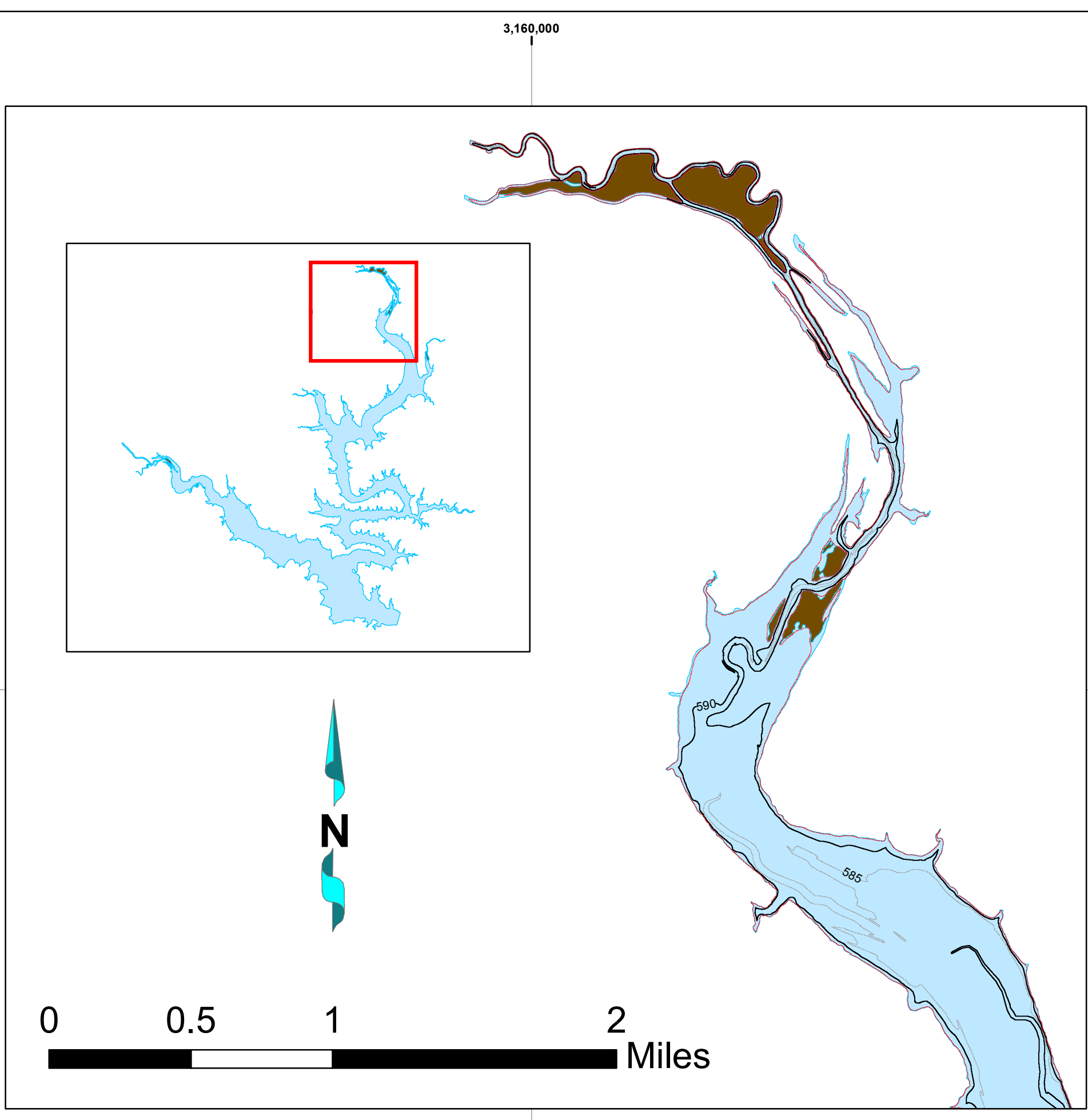
-  540
-  535
-  530
-  525
-  520
-  515
-  510
-  505
-  500
-  495
-  490
-  485

 Belton Lake
elevation 594.2
feet NGVD29

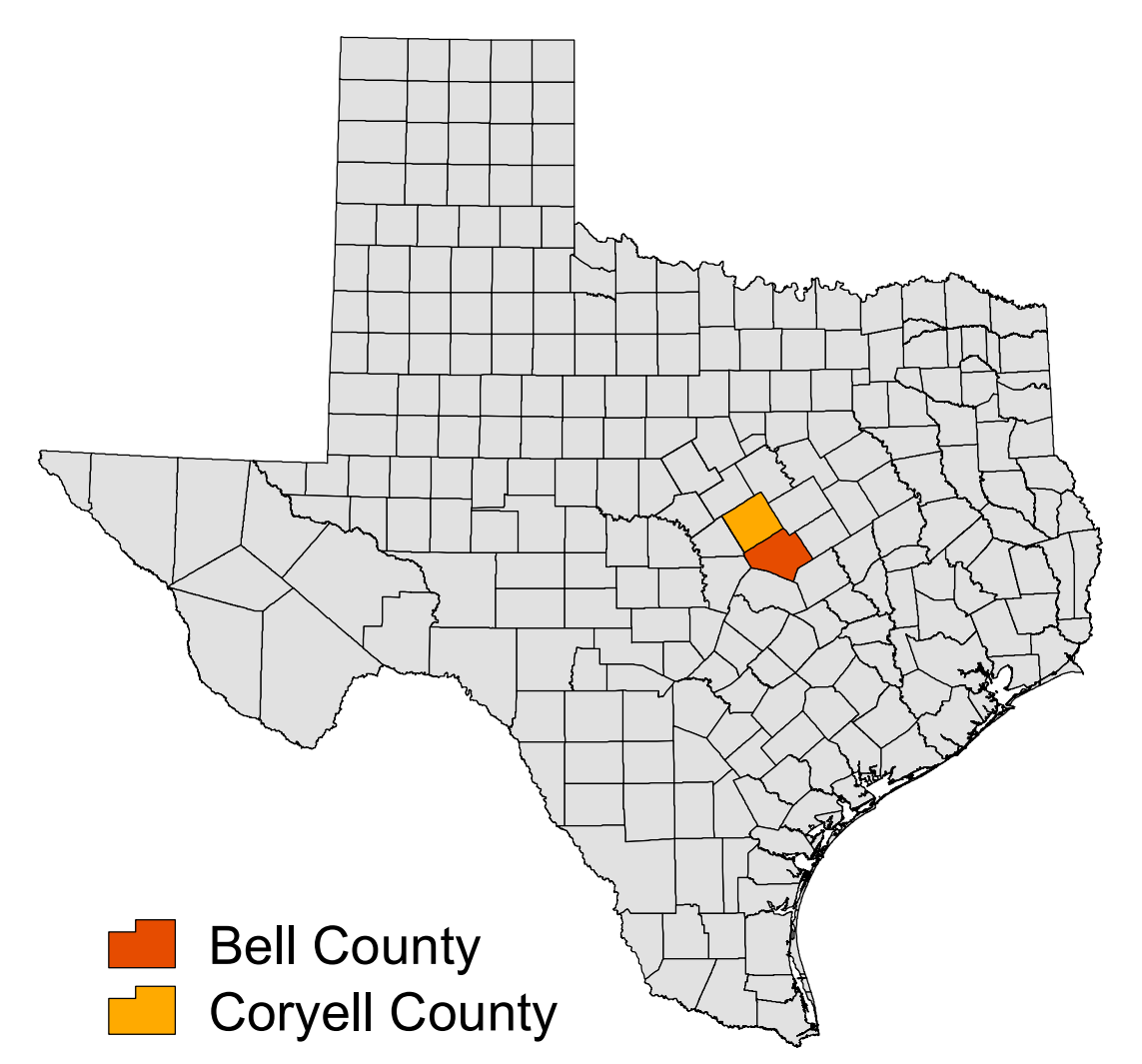
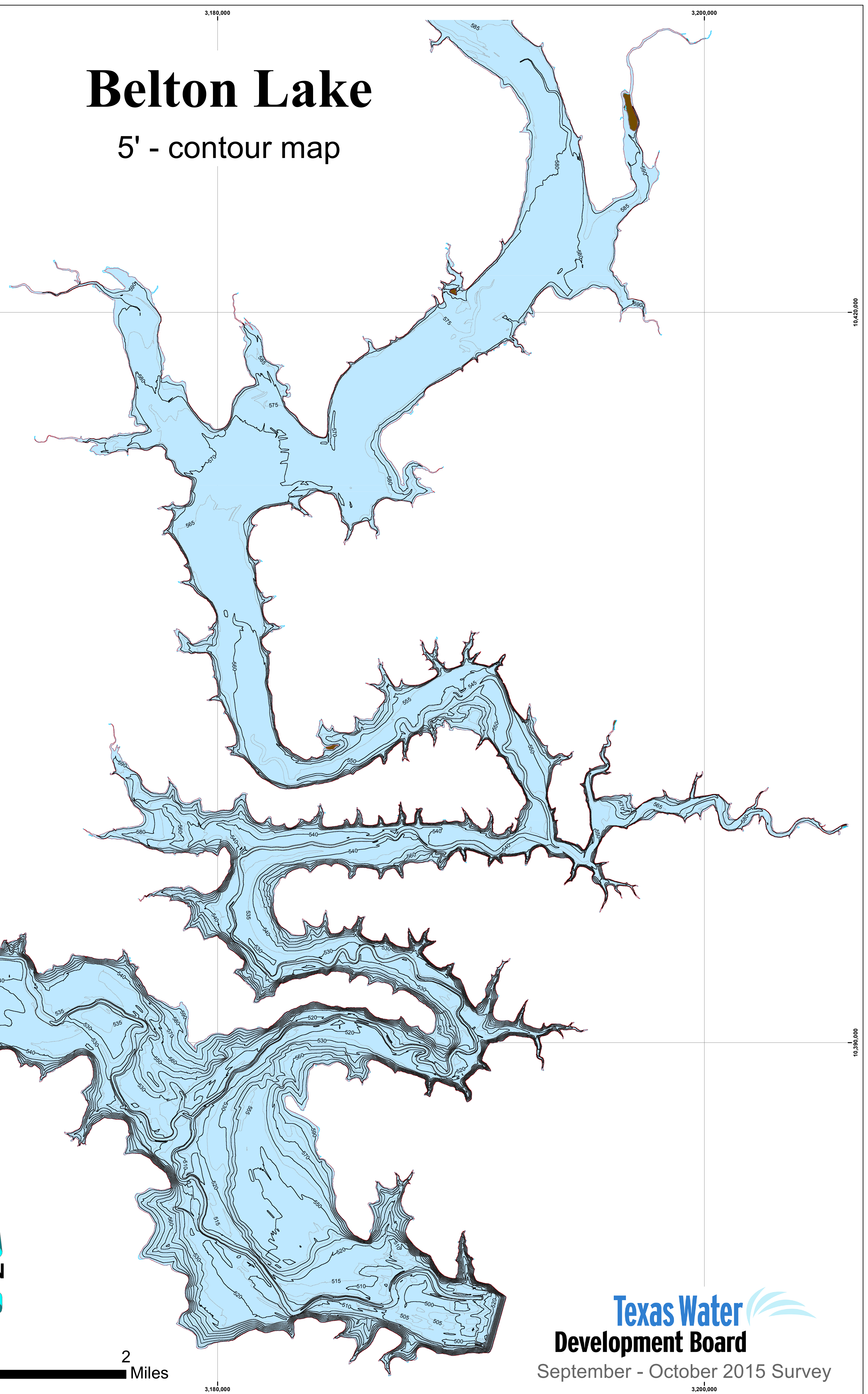
 Islands


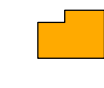
Projection: NAD83
State Plane Texas
Central Zone (feet)

This map is the product of a survey conducted by the Texas Water Development Board's Hydrographic Survey Program to determine the capacity of Belton Lake. The Texas Water Development Board makes no representations nor assumes any liability.



Belton Lake 5' - contour map



 Bell County
 Coryell County