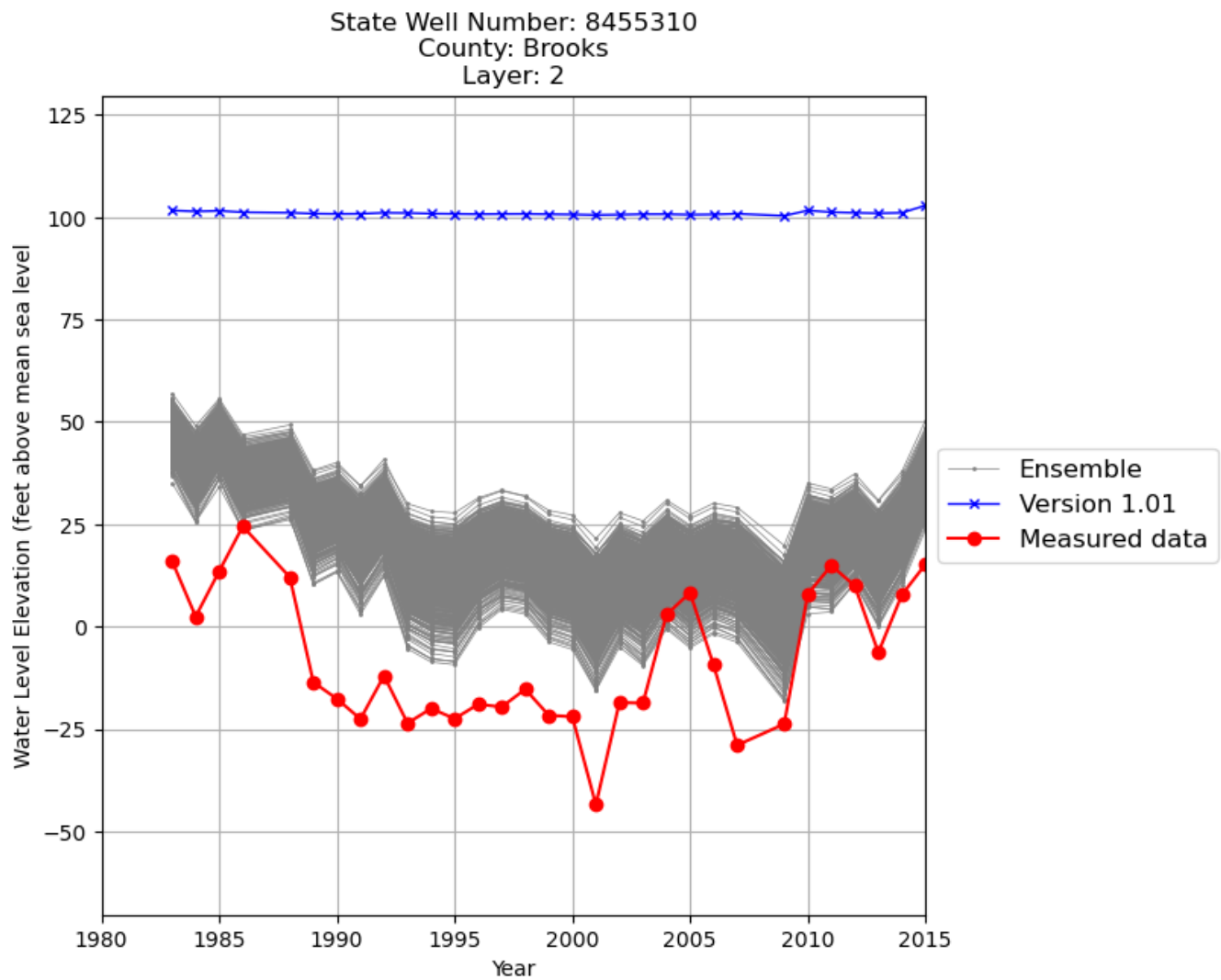
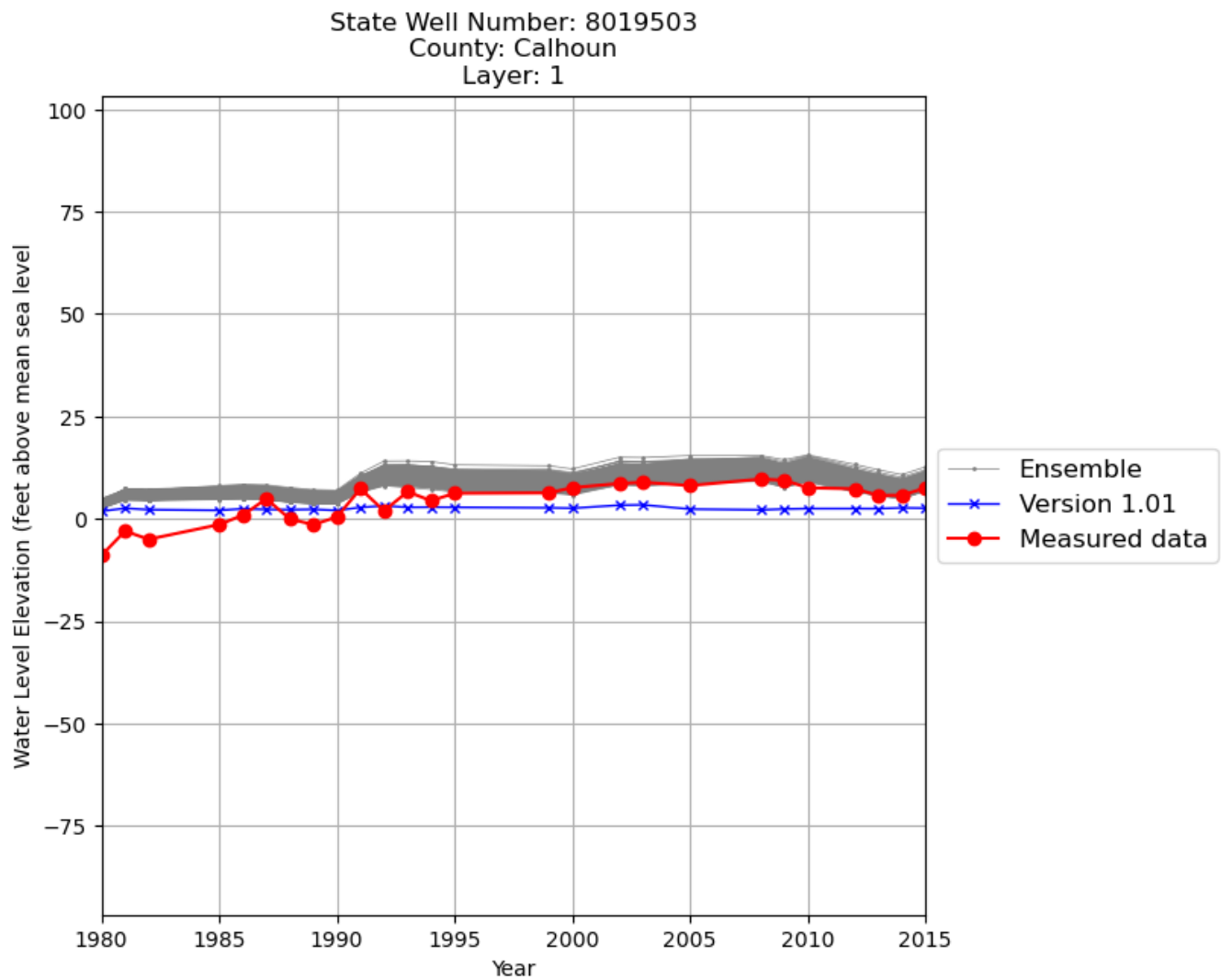


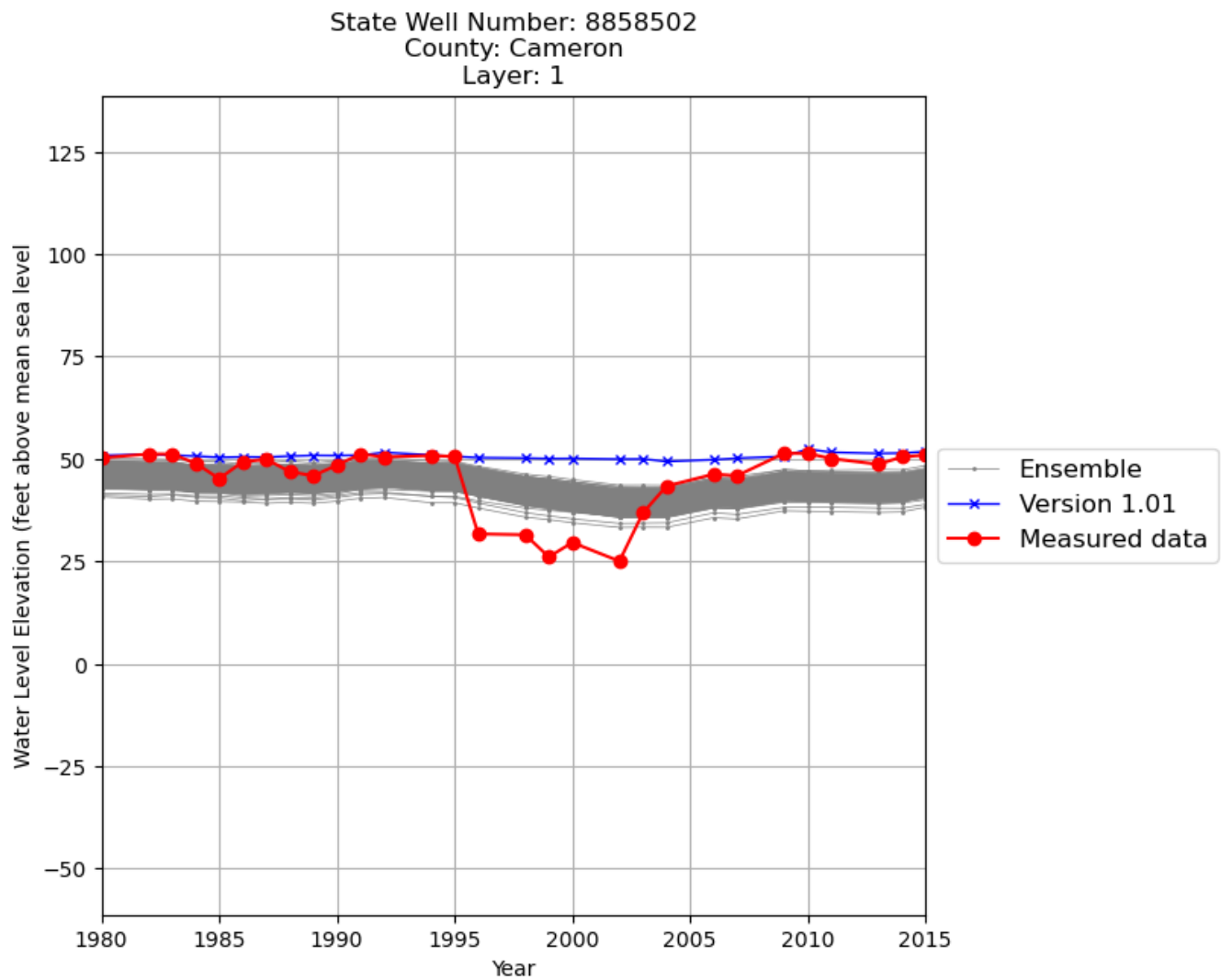
**Figure B.1: Ensemble hydrographs for state well number 7935101 in Bee County.**



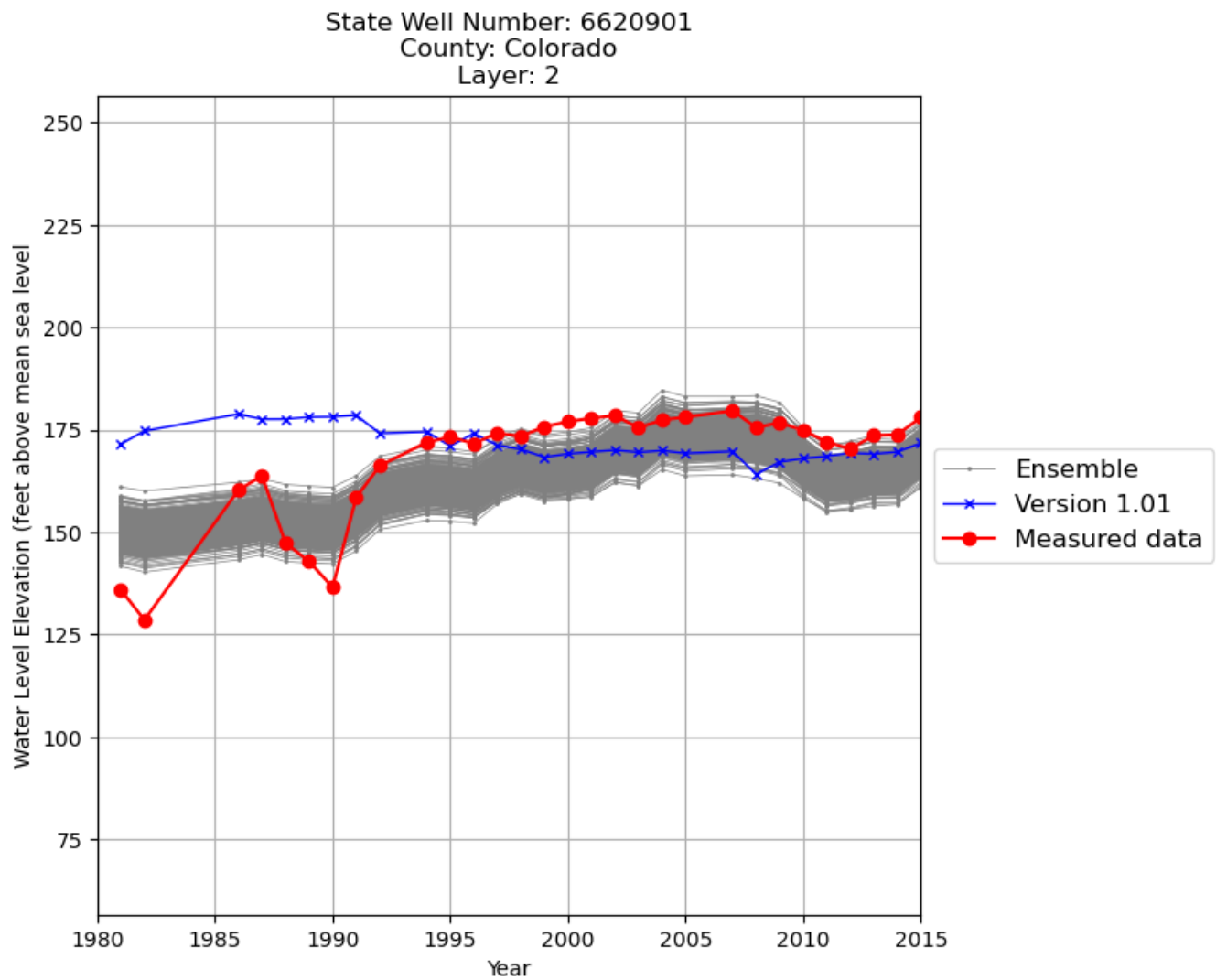
**Figure B.2: Ensemble hydrographs for state well number 8455310 in Brooks County.**



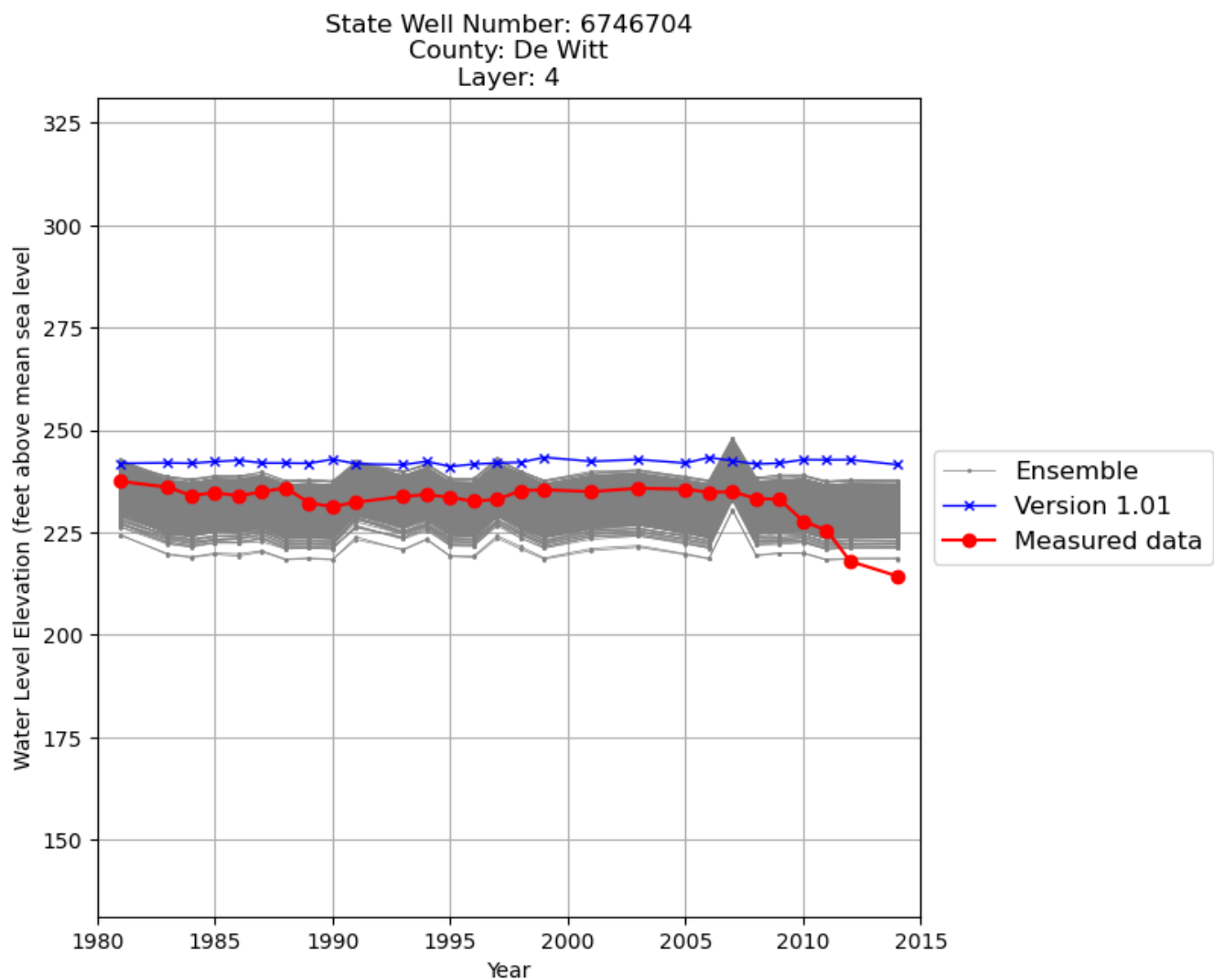
**Figure B.3: Ensemble hydrographs for state well number 8019503 in Calhoun County.**



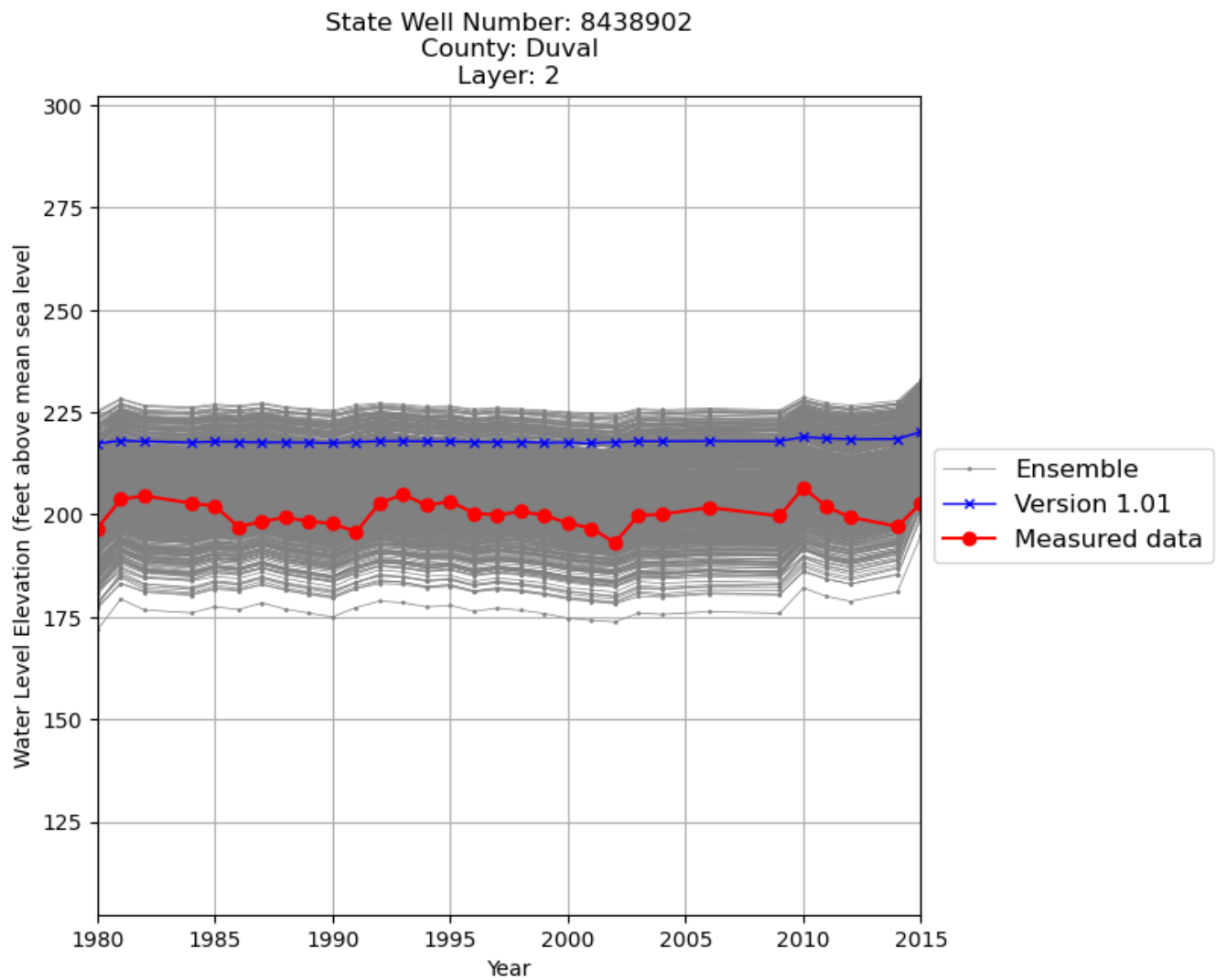
**Figure B.4: Ensemble hydrographs for state well number 8858502 in Cameron County.**



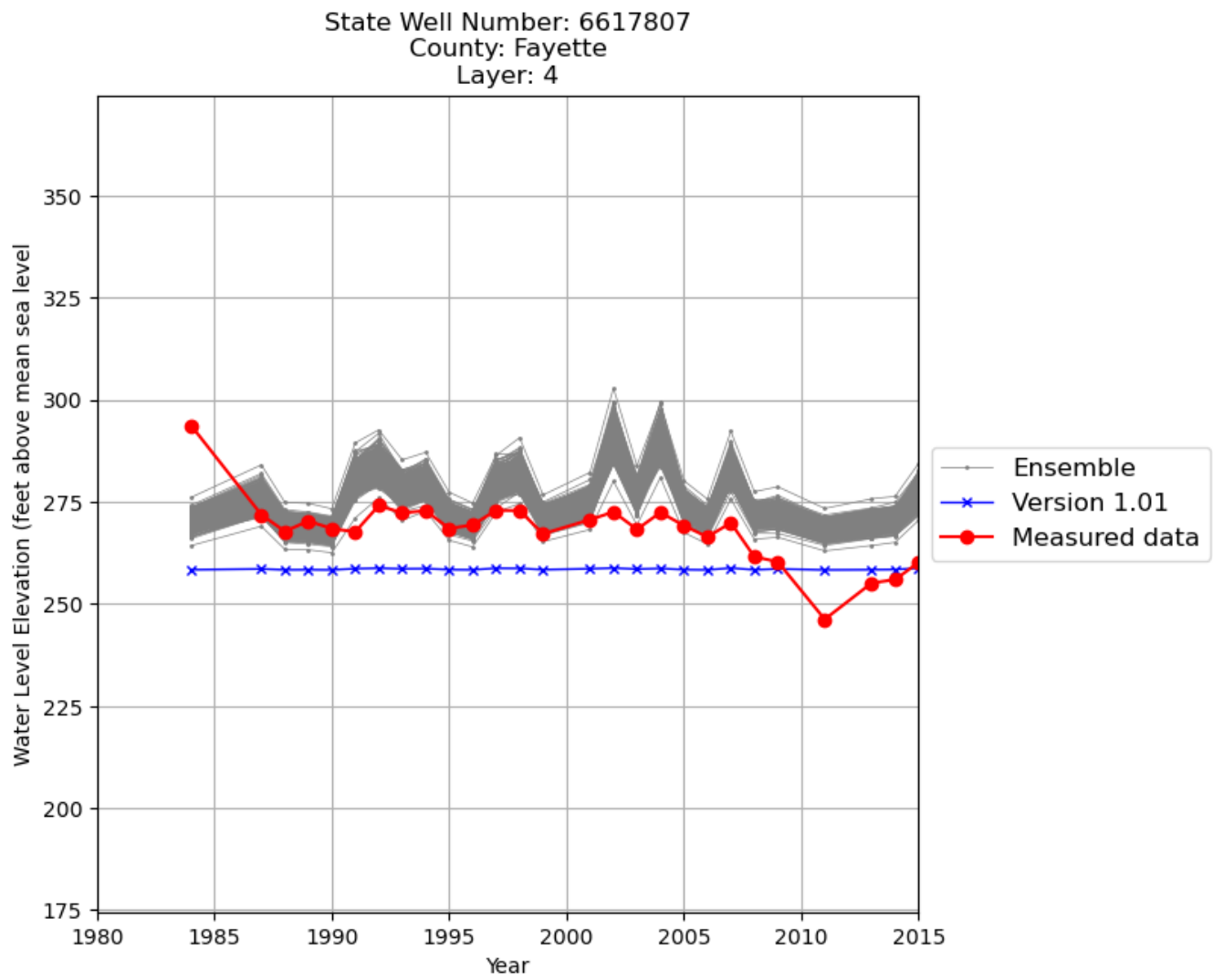
**Figure B.5: Ensemble hydrographs for state well number 6620901 in Colorado County.**



**Figure B.6: Ensemble hydrographs for state well number 6746704 in De Witt County.**

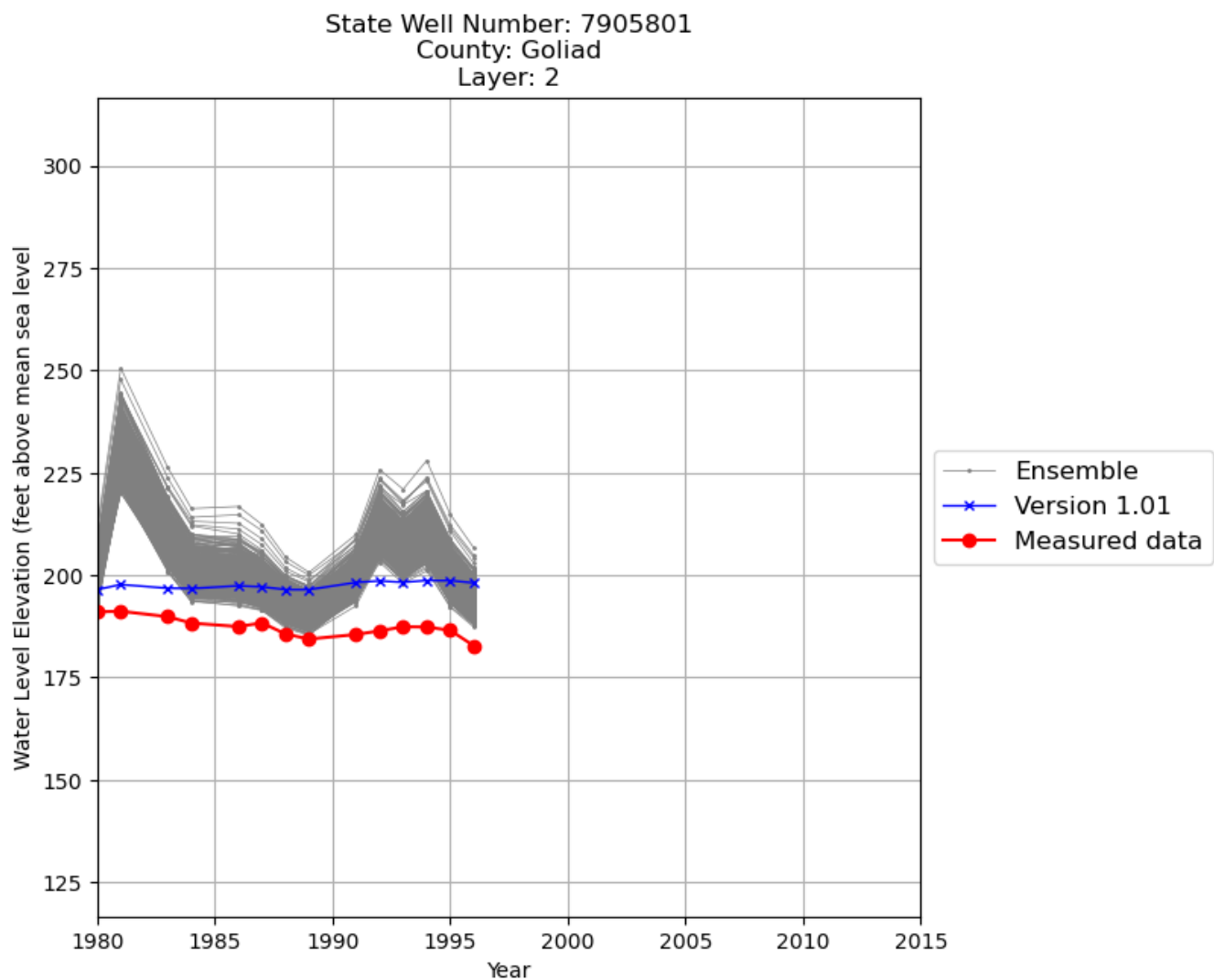


**Figure B.7: Ensemble hydrographs for state well number 8438902 in Duval County.**

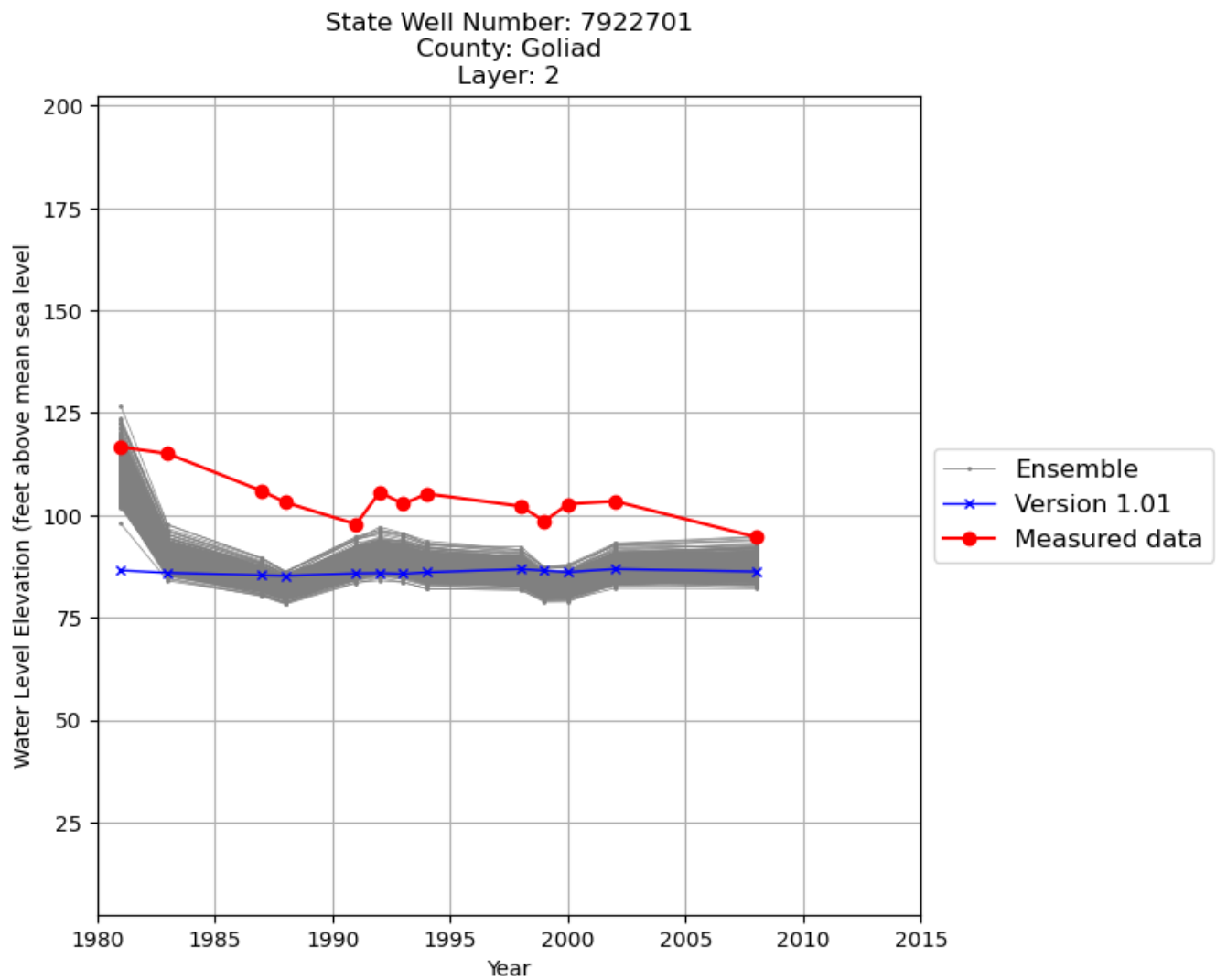


**Figure B.1: Ensemble hydrographs for state well number 6617807 in Fayette County.**

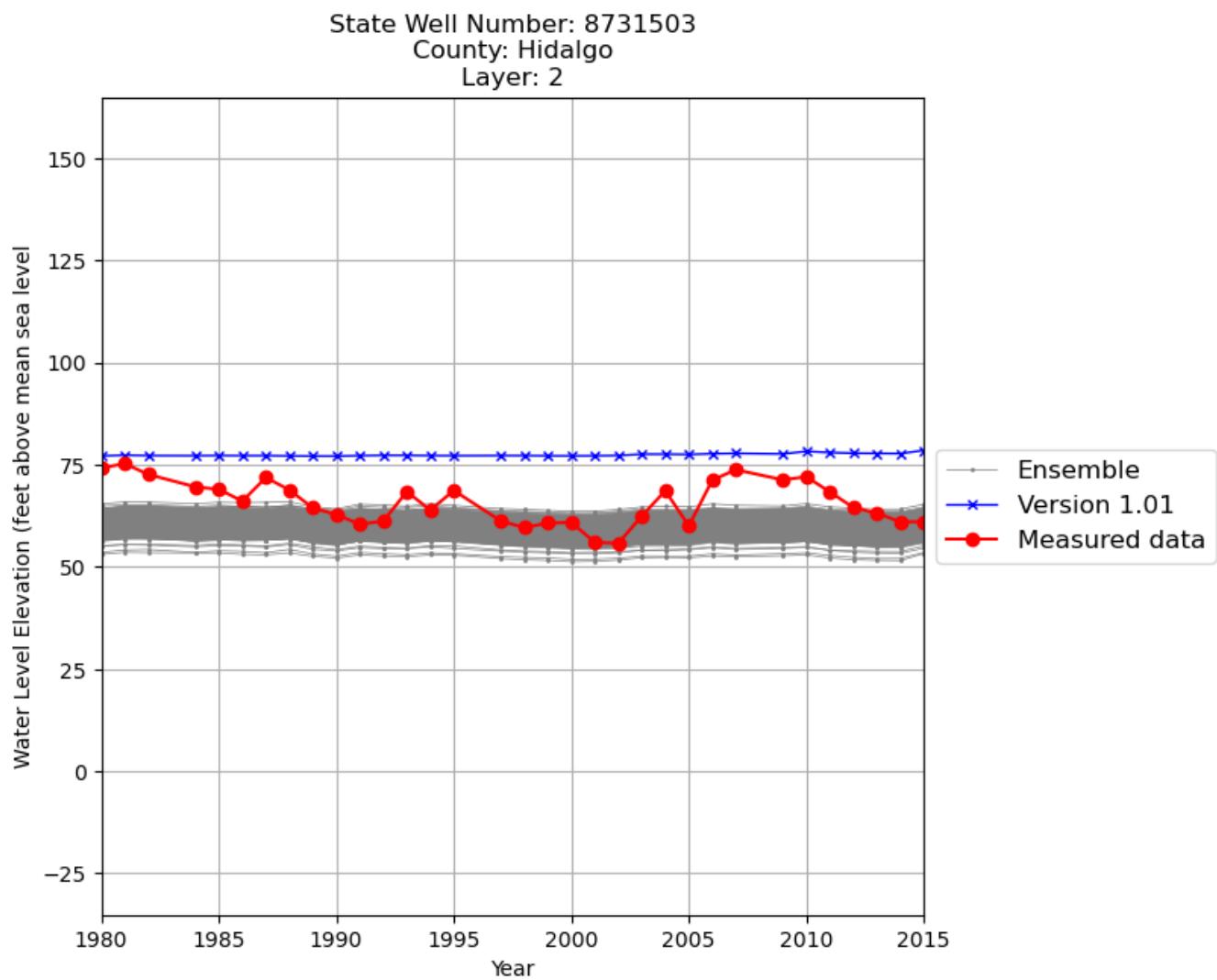




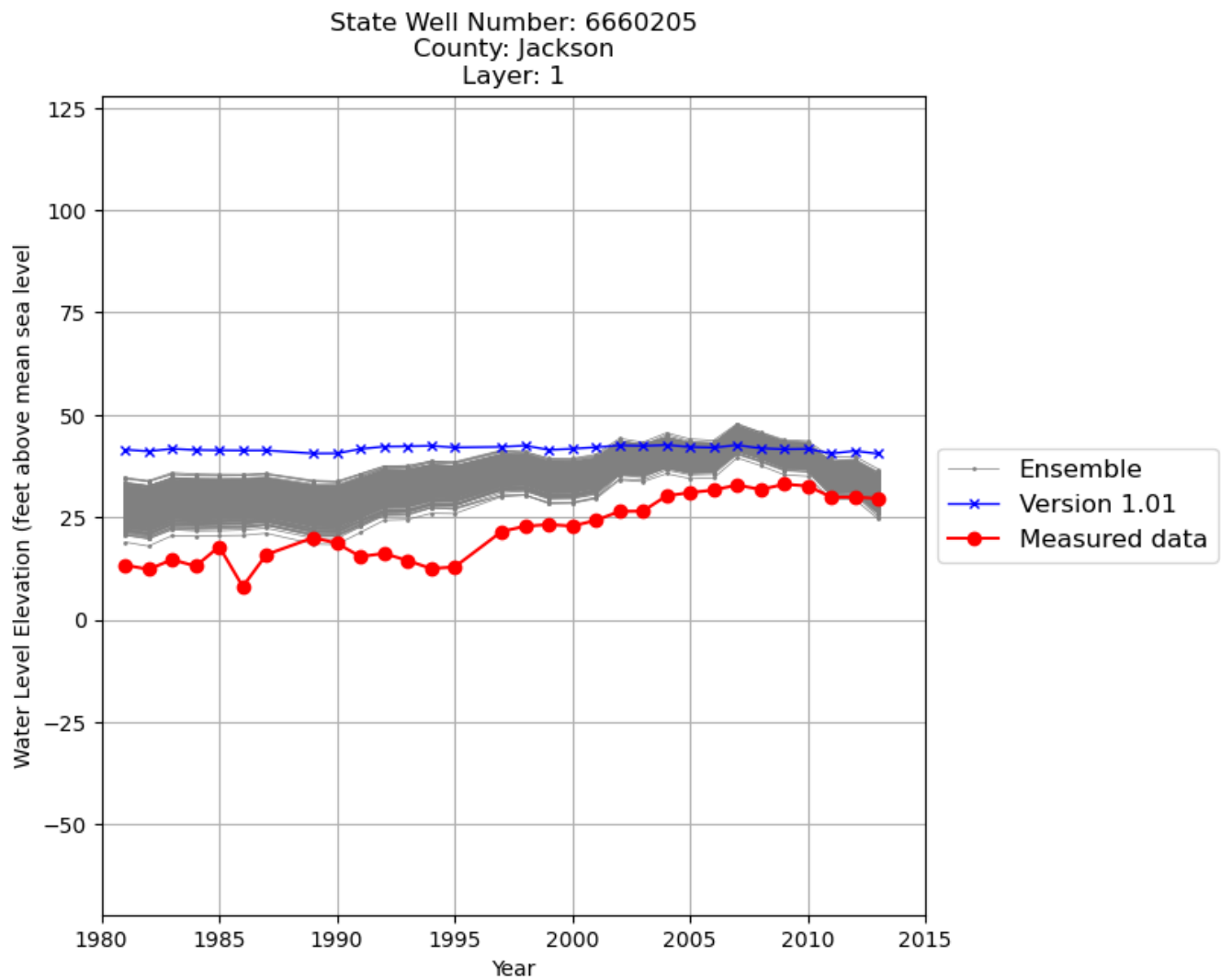
**Figure B.9: Ensemble hydrographs for state well number 7905801 in Goliad County.**



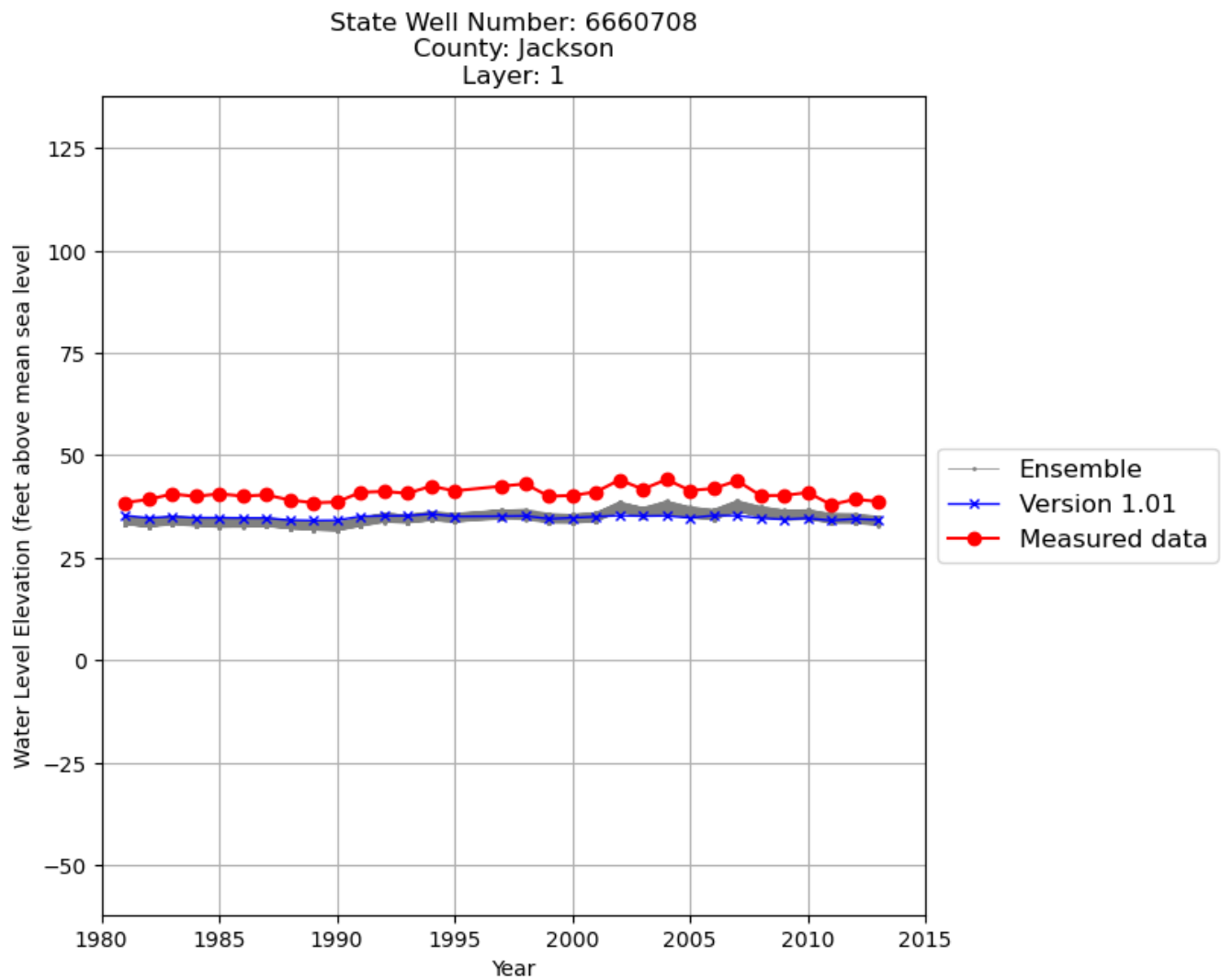
**Figure B.10: Ensemble hydrographs for state well number 7922701 in Goliad County.**



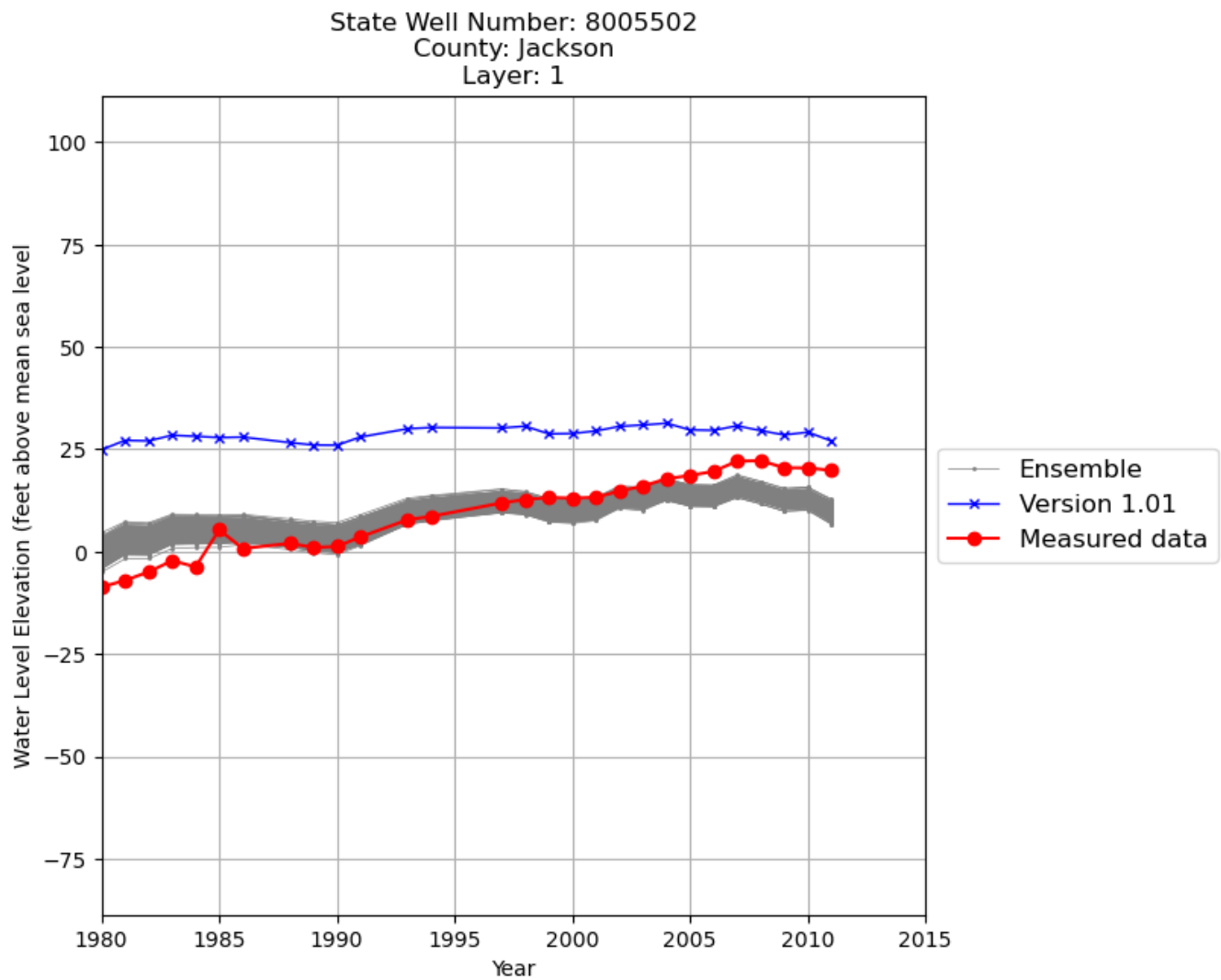
**Figure B.11: Ensemble hydrographs for state well number 8731503 in Hidalgo County.**



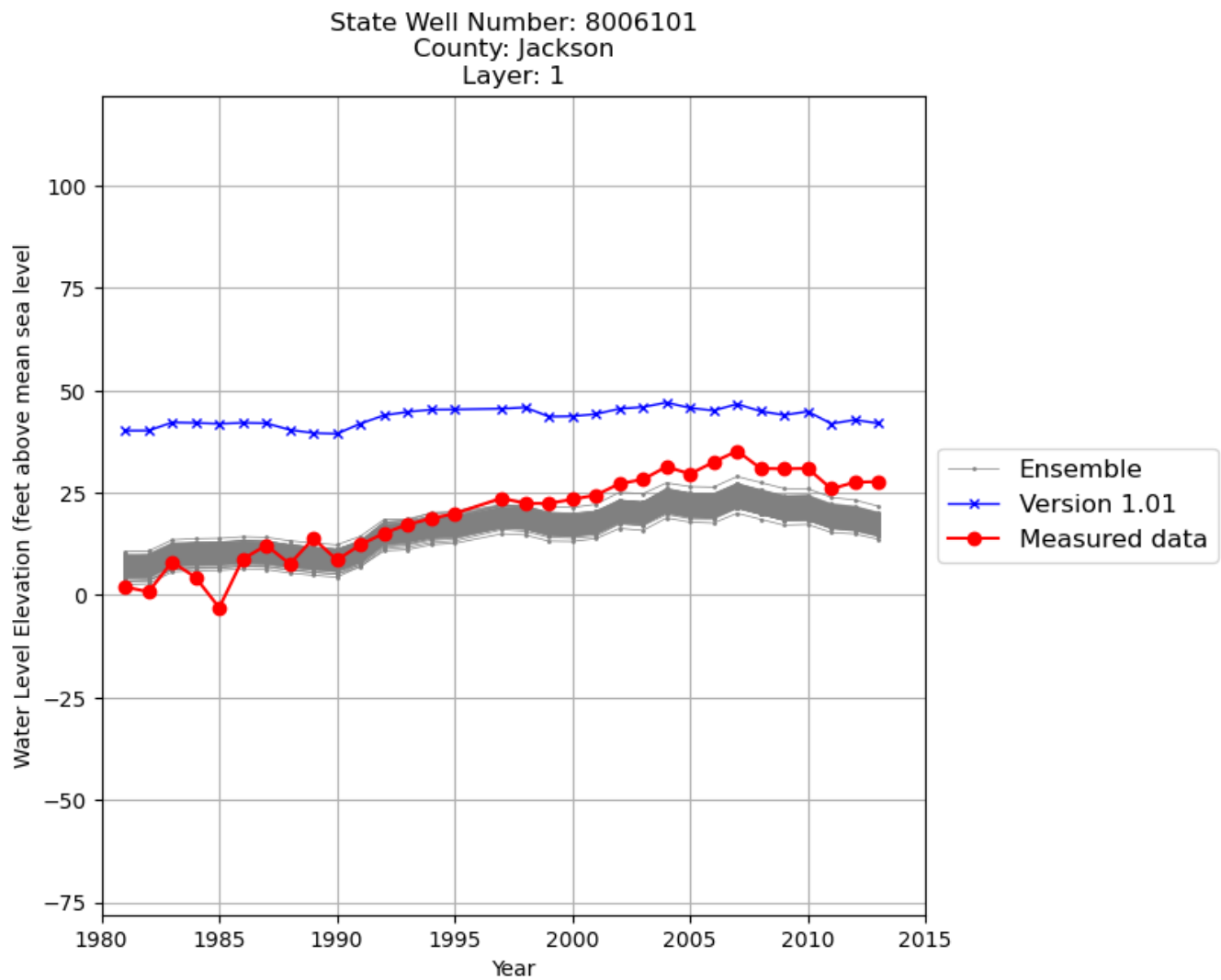
**Figure B.12: Ensemble hydrographs for state well number 6660205 in Jackson County.**



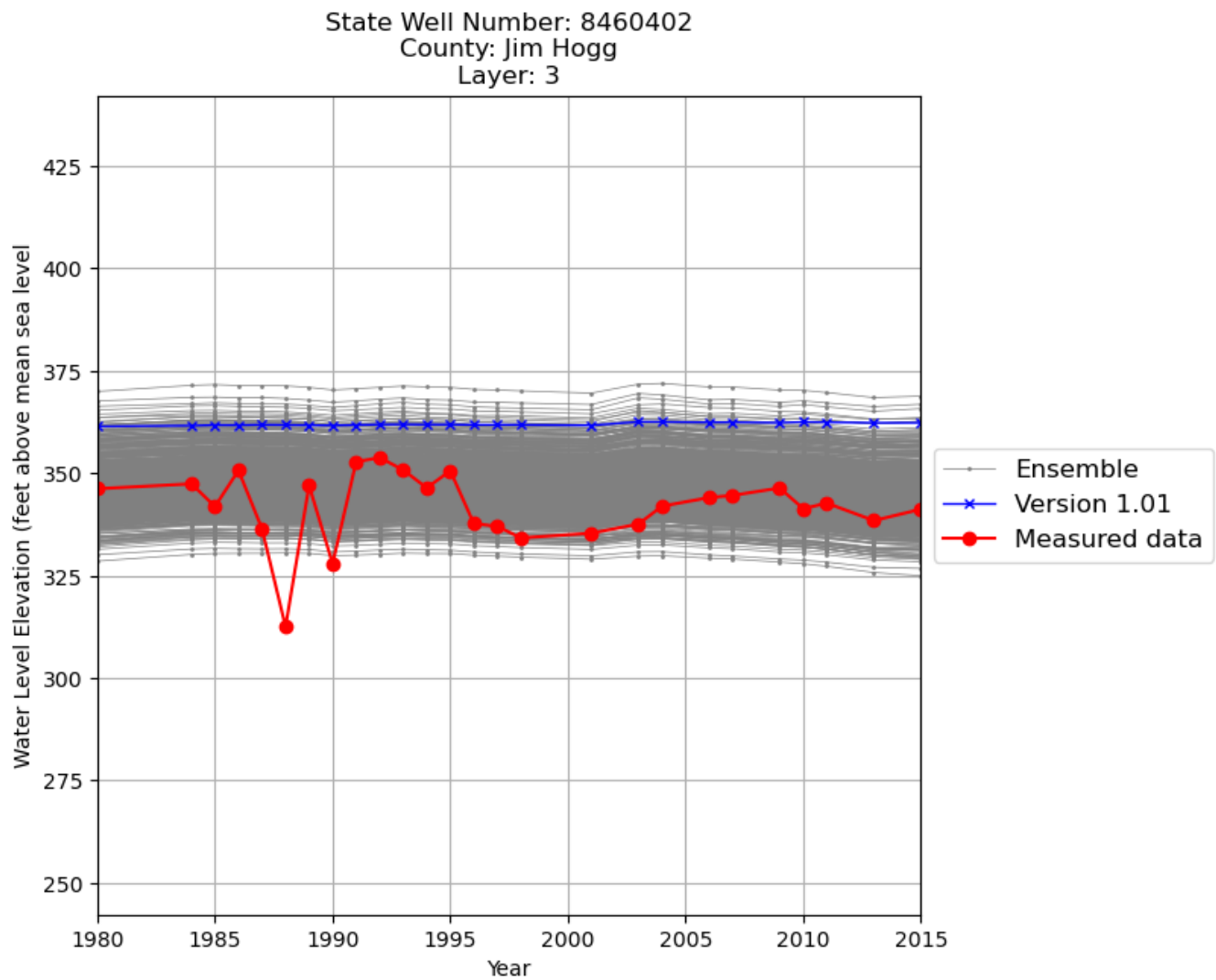
**Figure B.13: Ensemble hydrographs for state well number 6660708 in Jackson County.**



**Figure B.14: Ensemble hydrographs for state well number 8005502 in Jackson County.**

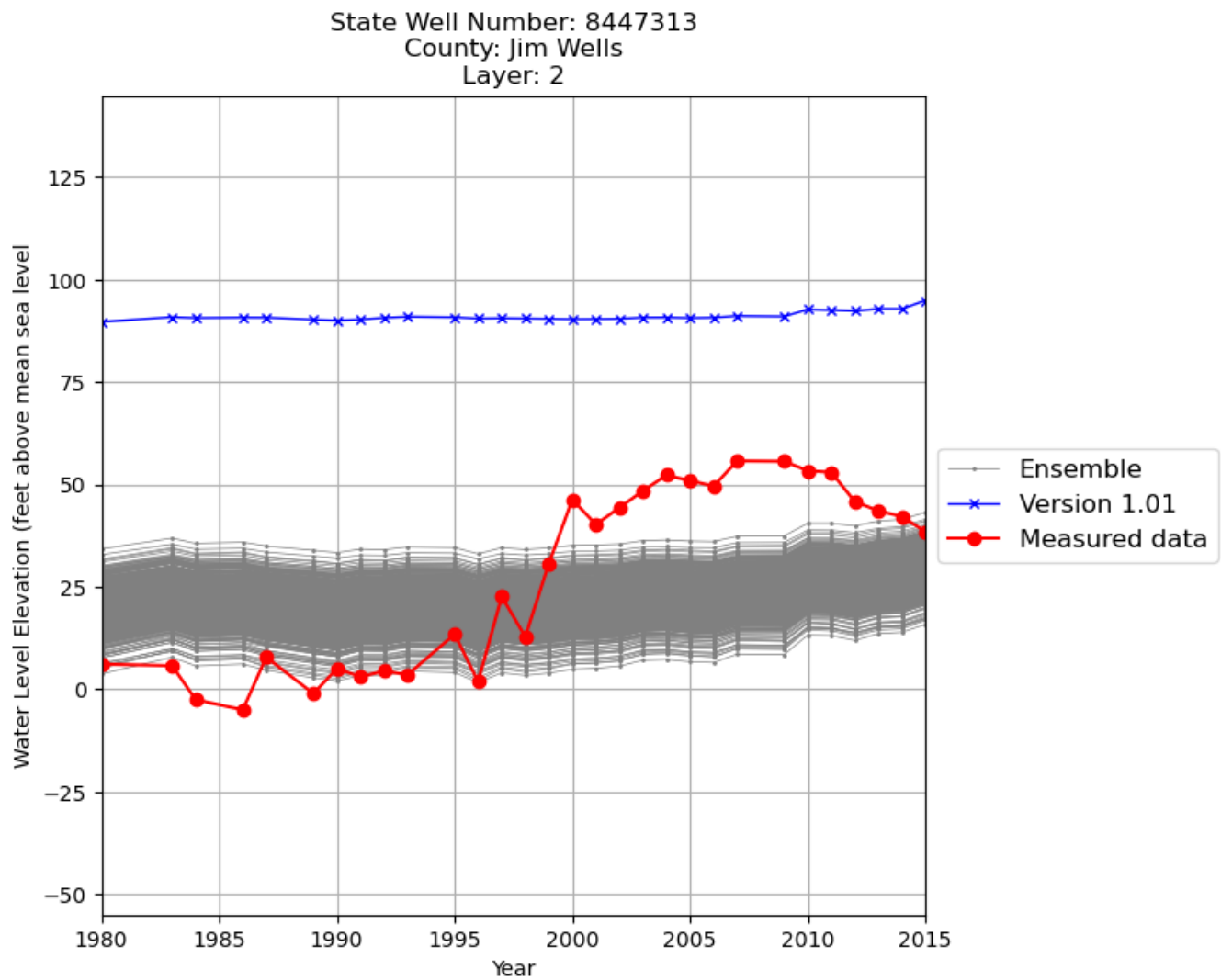


**Figure B.15: Ensemble hydrographs for state well number 8006101 in Jackson County.**

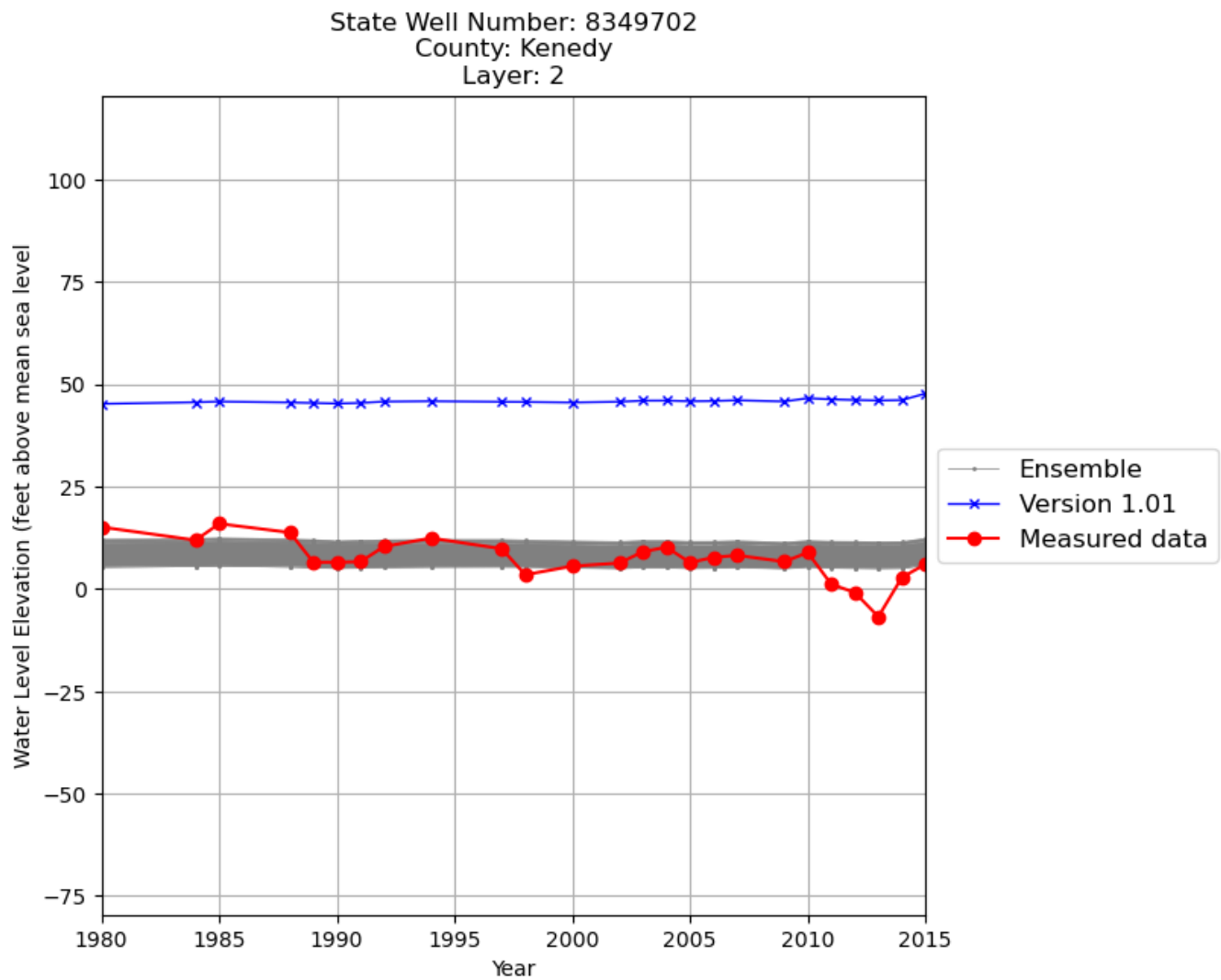


**Figure B.16: Ensemble hydrographs for state well number 8460402 in Jim Hogg County.**

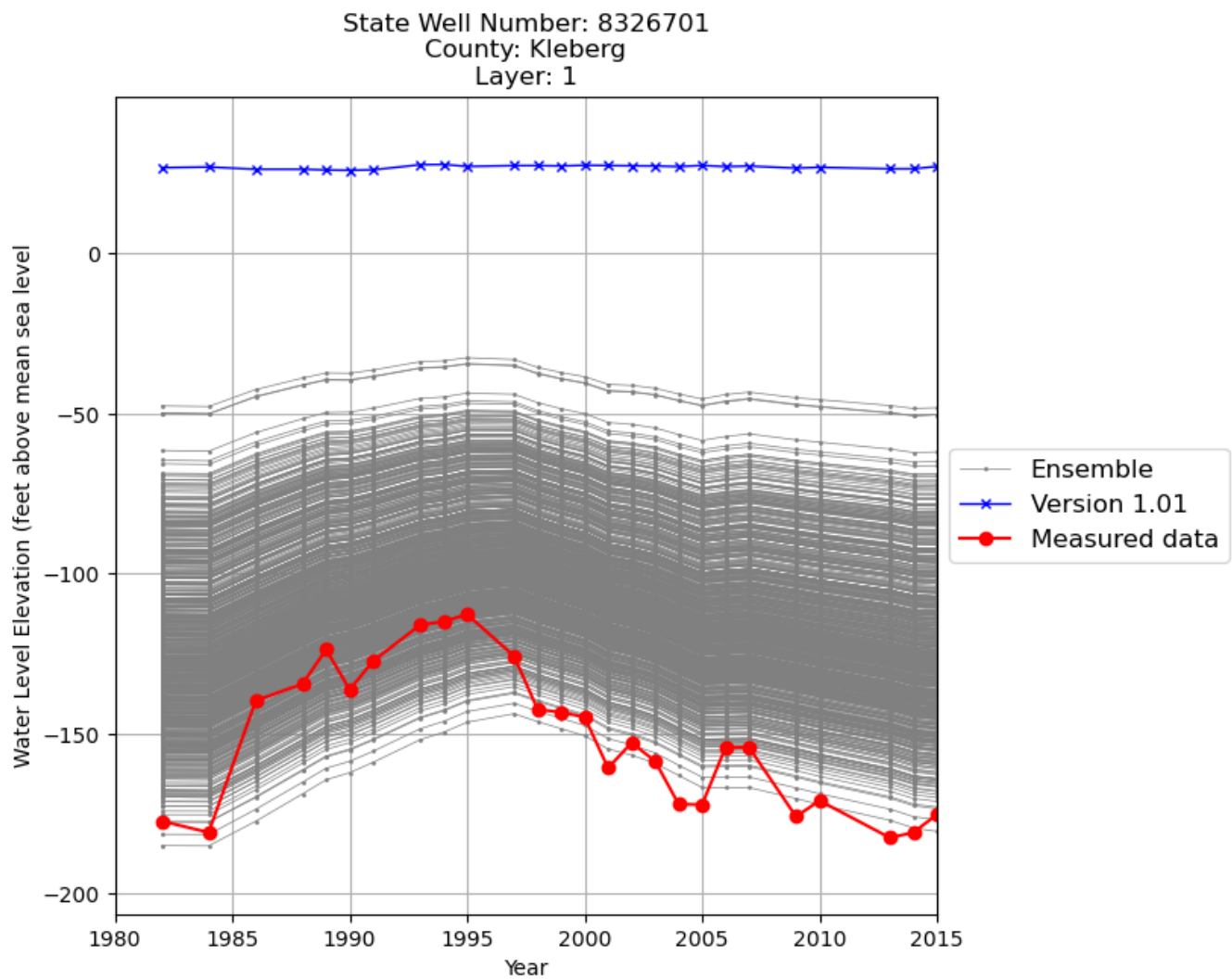




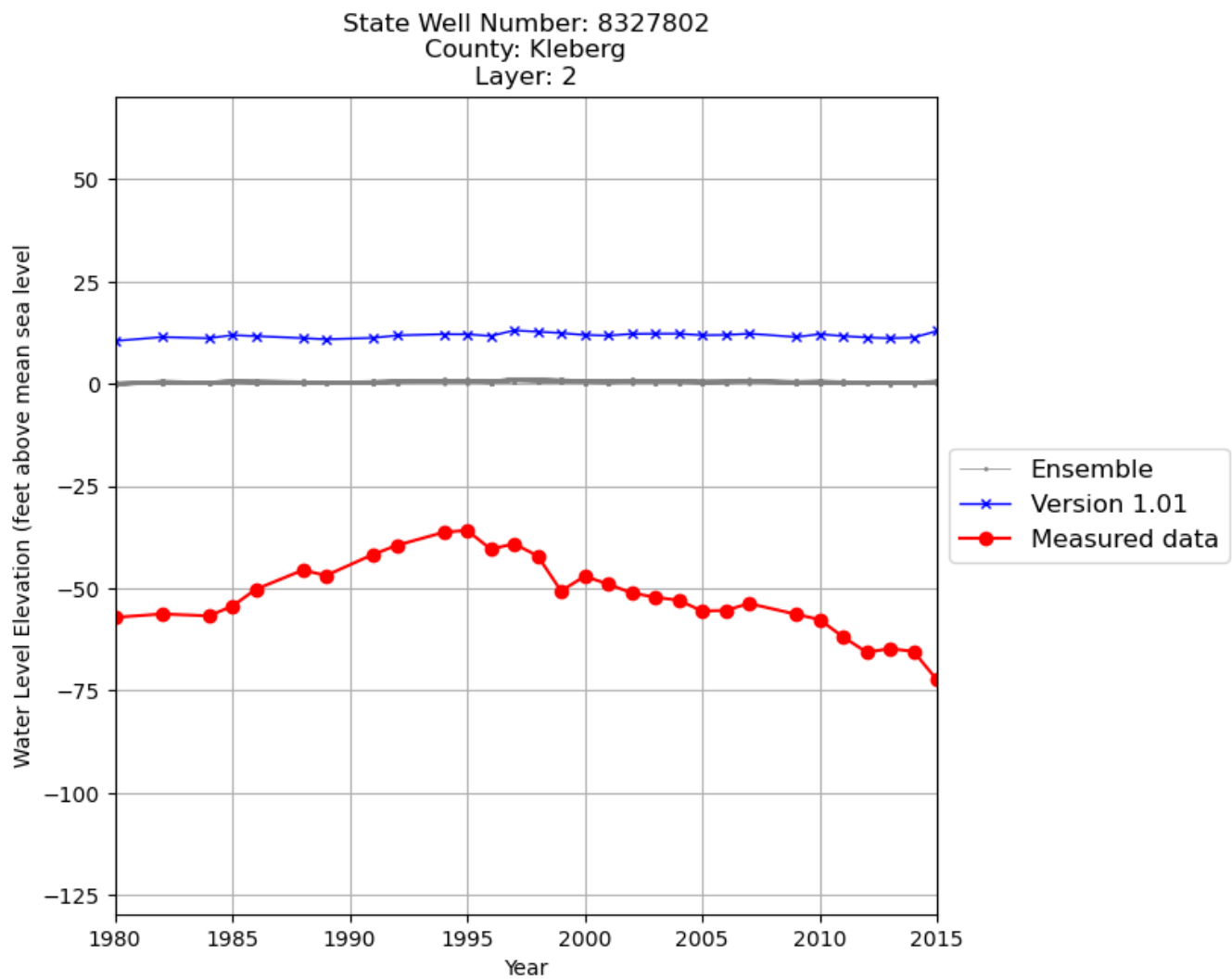
**Figure B.17: Ensemble hydrographs for state well number 8447313 in Jim Wells County.**



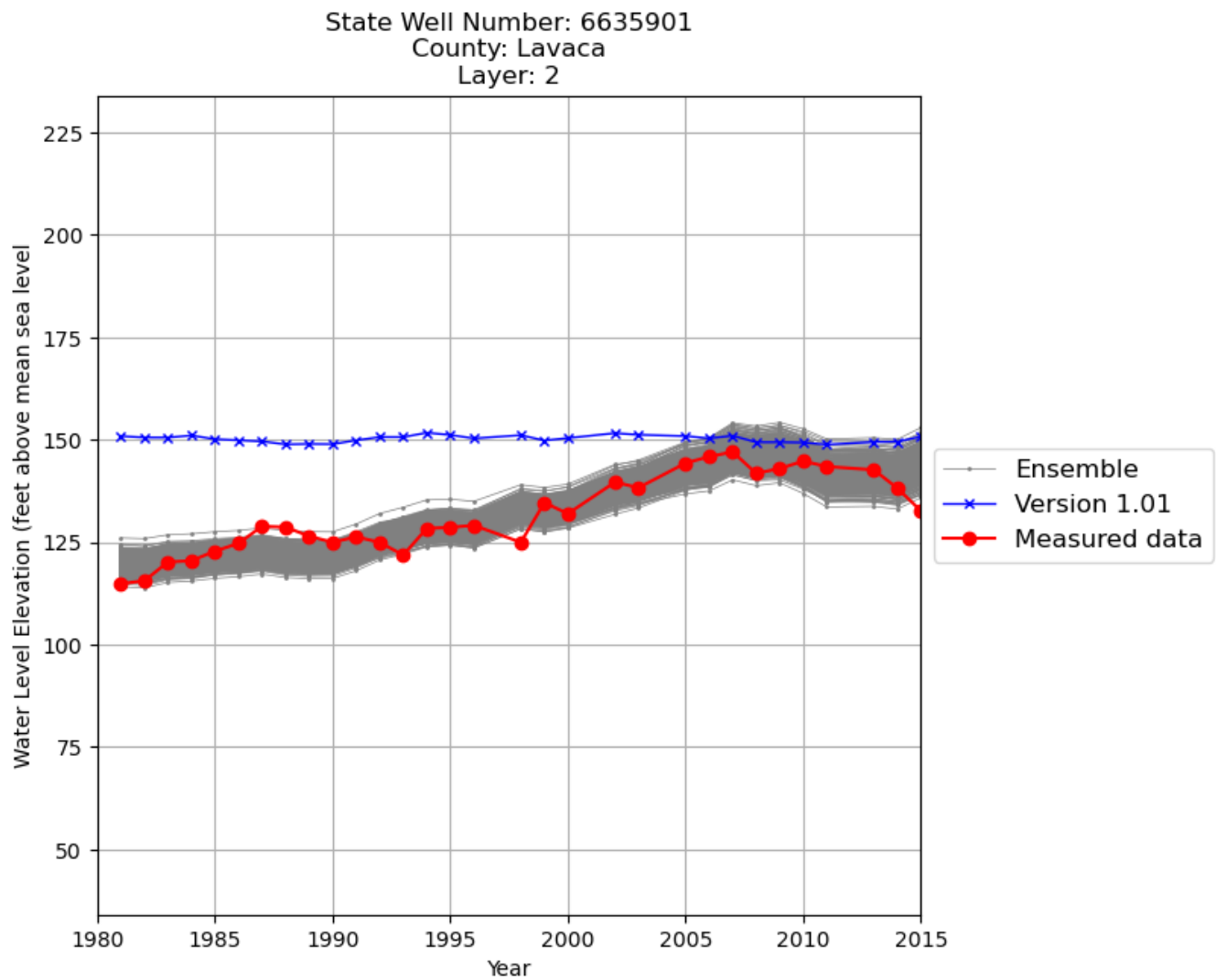
**Figure B.18: Ensemble hydrographs for state well number 8349702 in Kenedy County.**



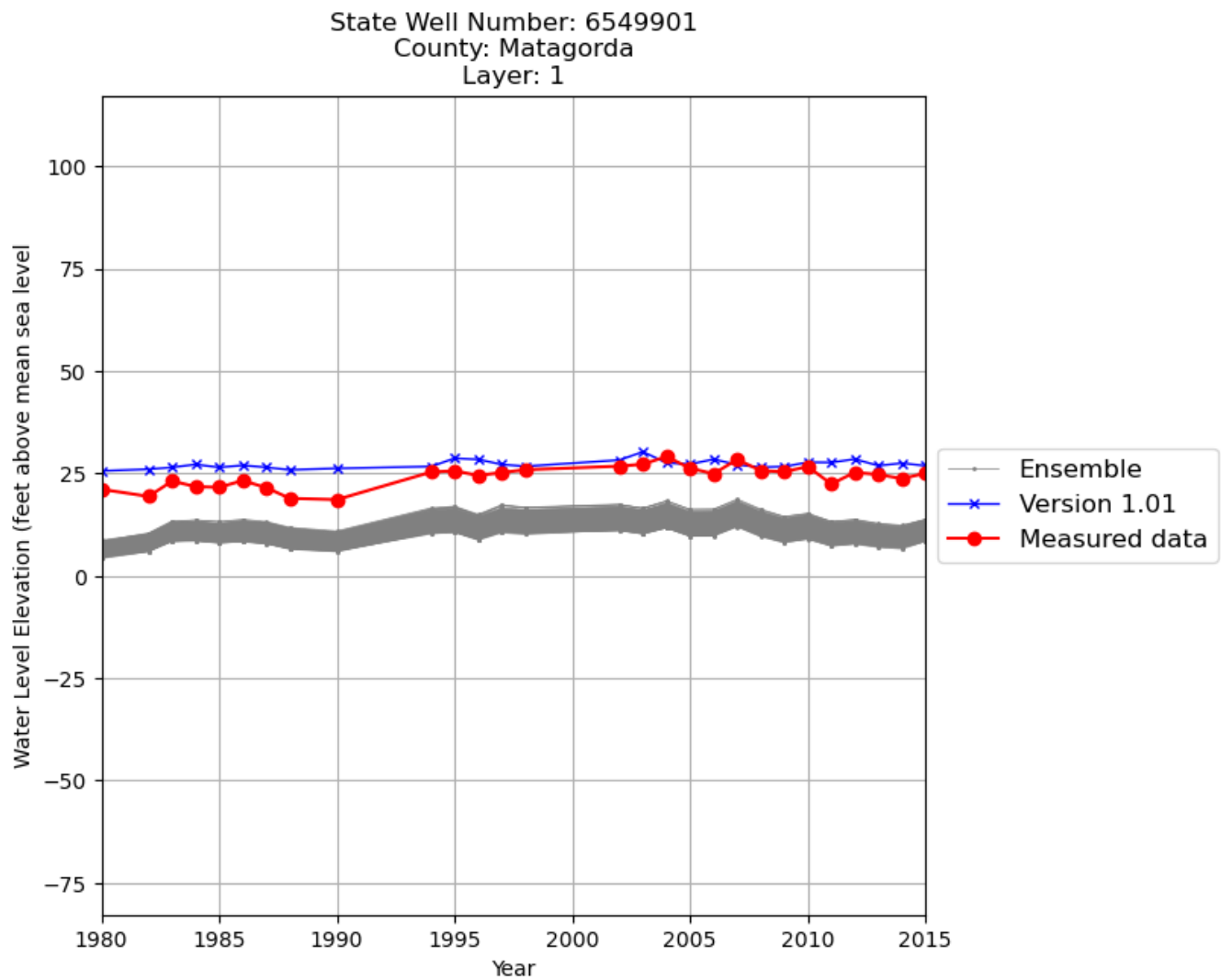
**Figure B.19: Ensemble hydrographs for state well number 8326701 in Kleberg County.**



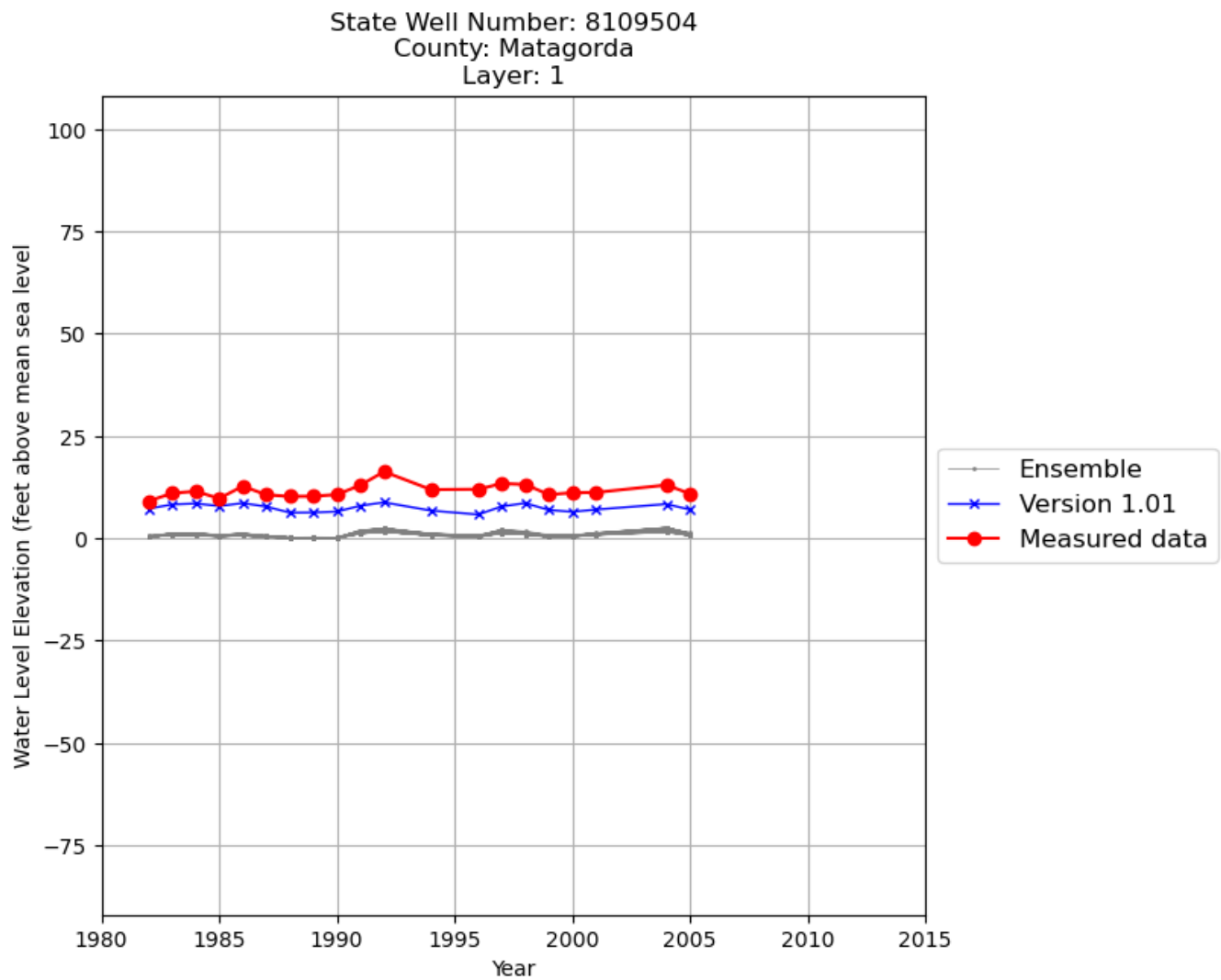
**Figure B.20: Ensemble hydrographs for state well number 8327802 in Kleberg County.**



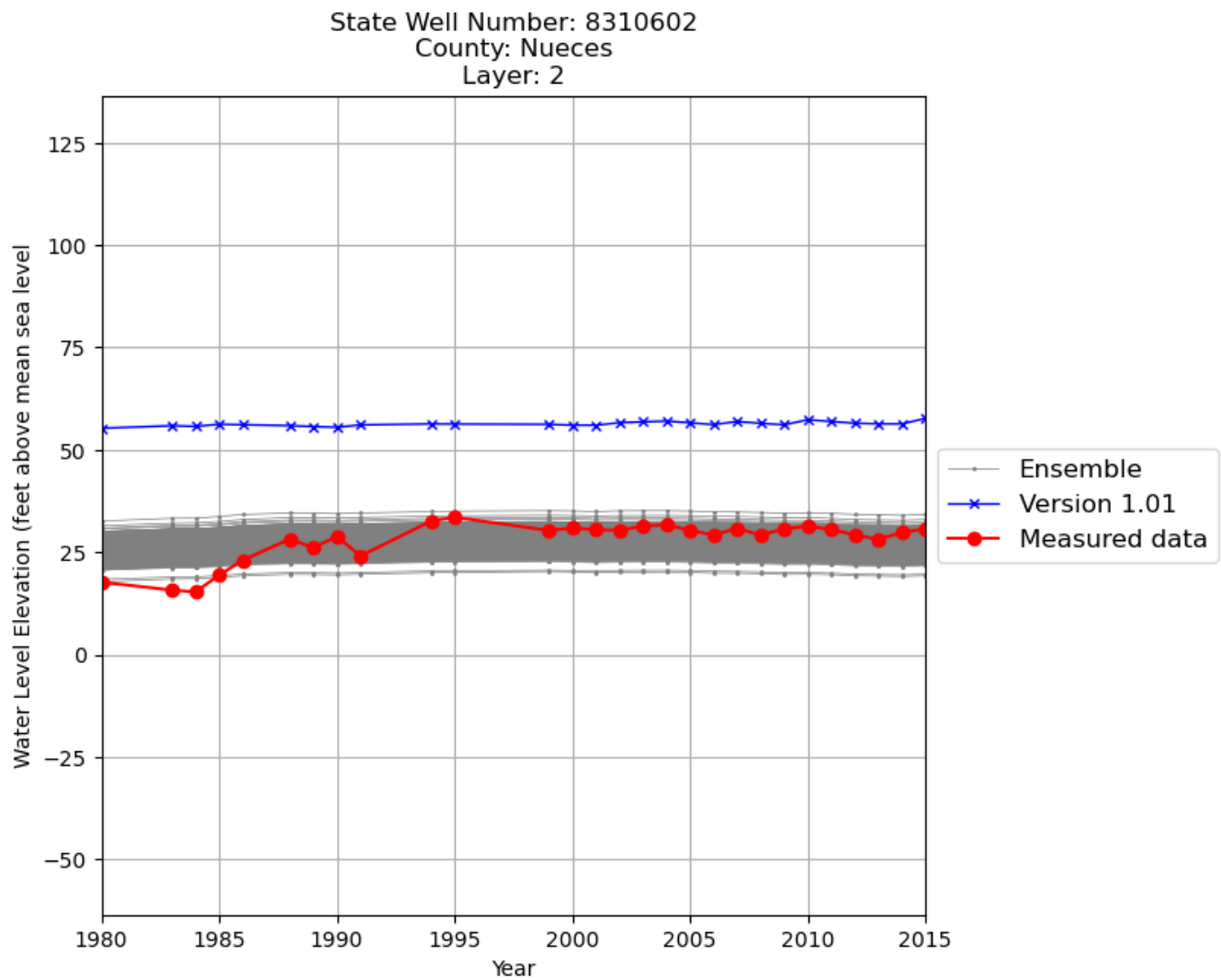
**Figure B.21: Ensemble hydrographs for state well number 6635901 in Lavaca County.**



**Figure B.22: Ensemble hydrographs for state well number 6549901 in Matagorda County.**

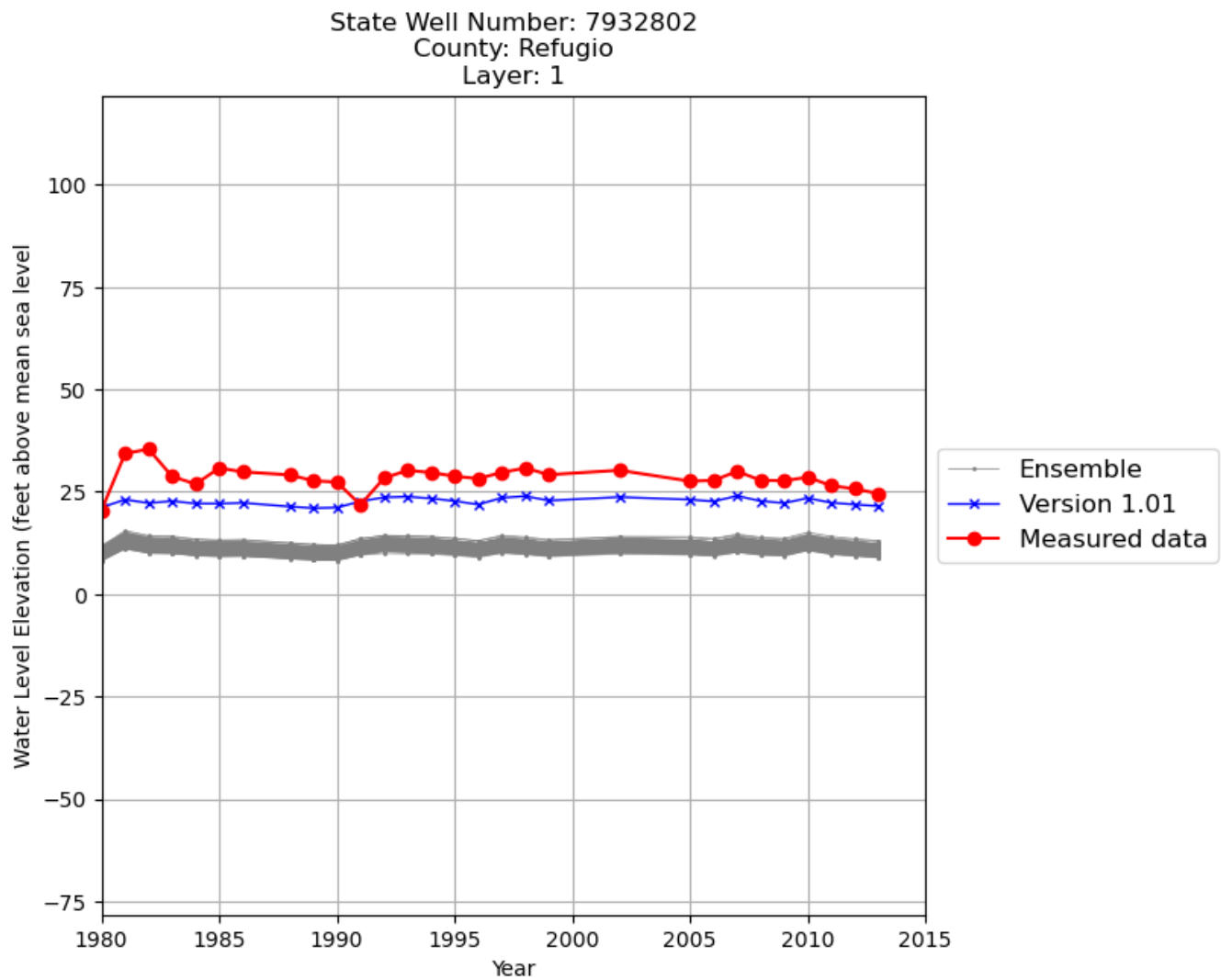


**Figure B.23: Ensemble hydrographs for state well number 8109504 in Matagorda County.**

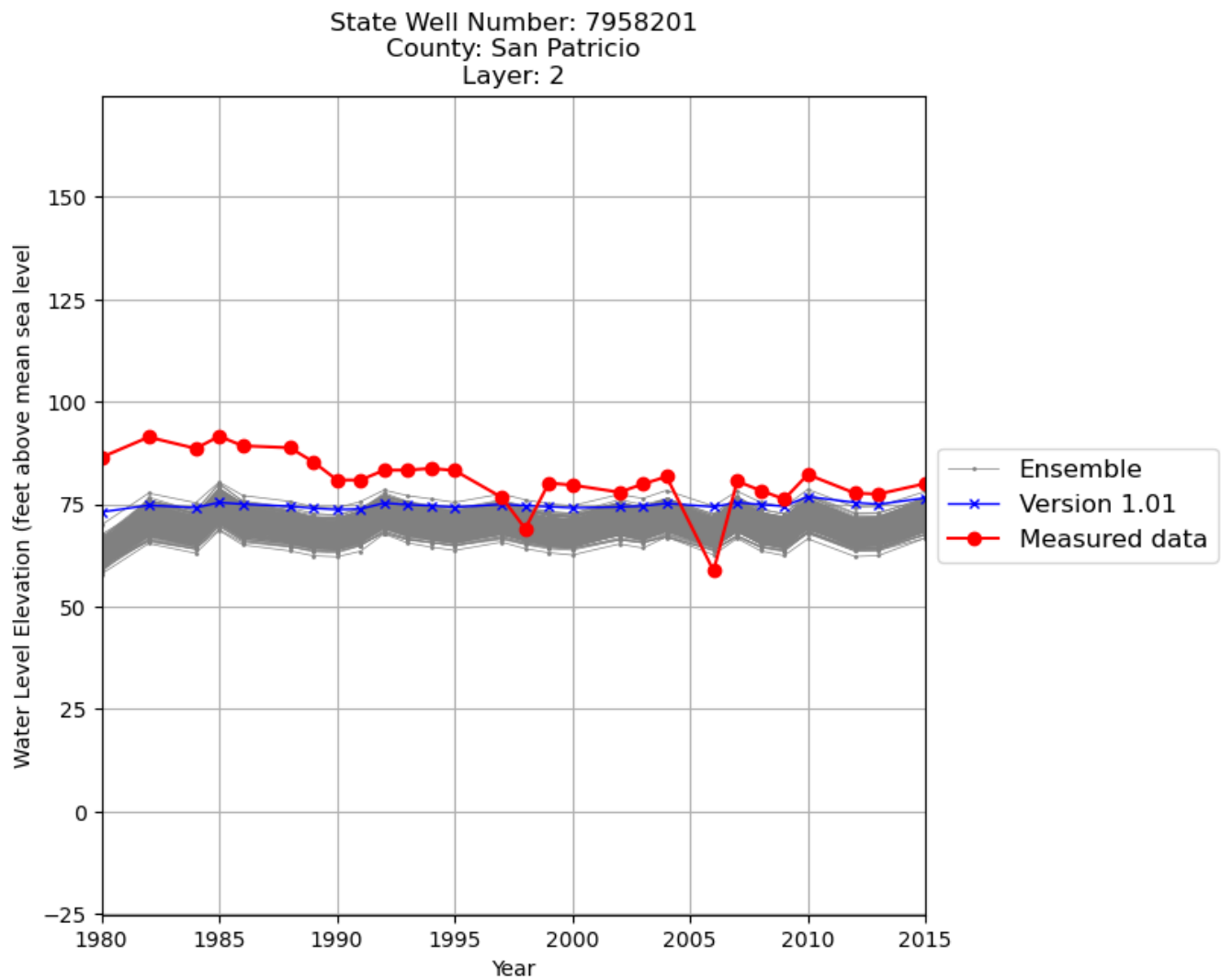


**Figure B.24: Ensemble hydrographs for state well number 8310602 in Nueces County.**

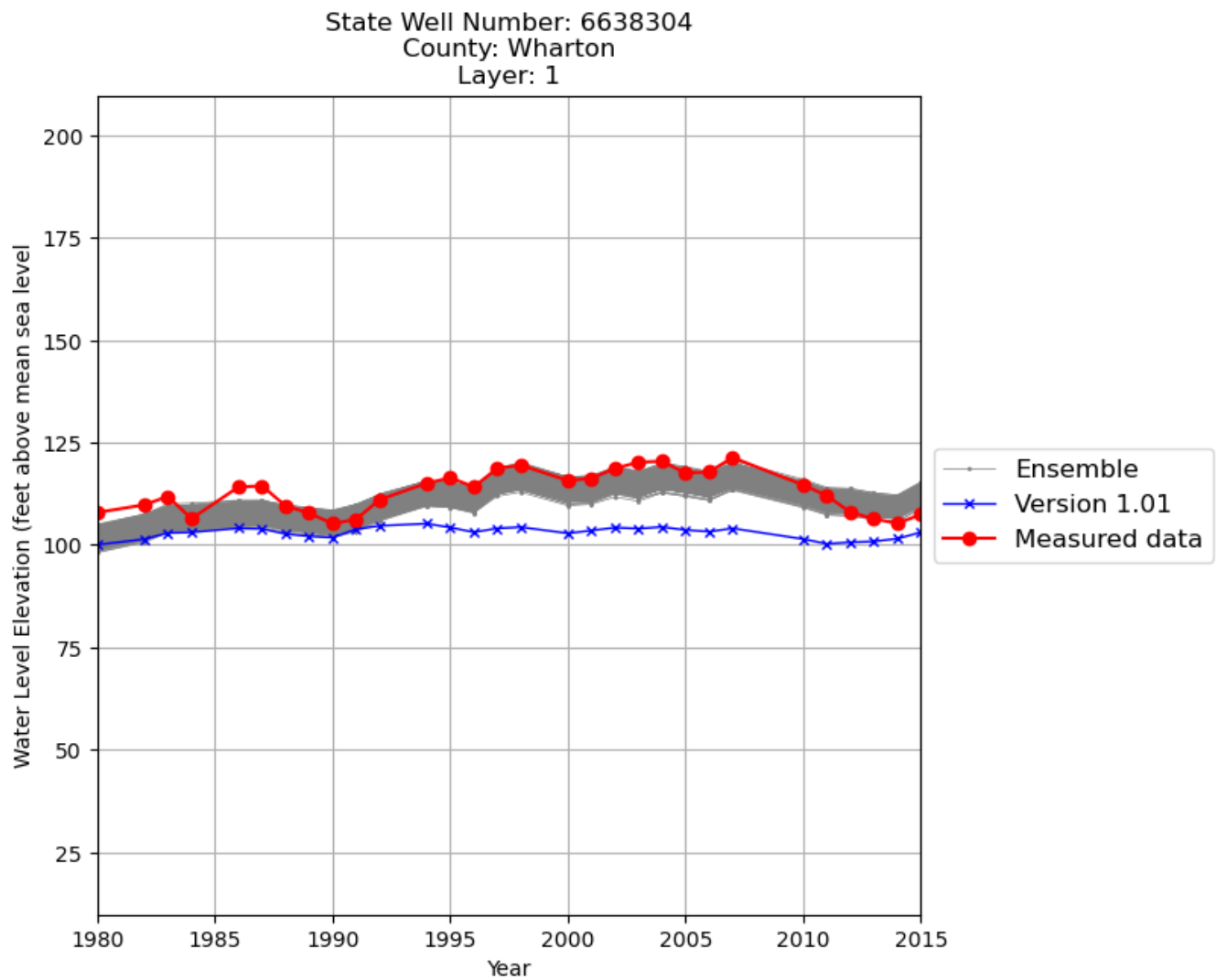




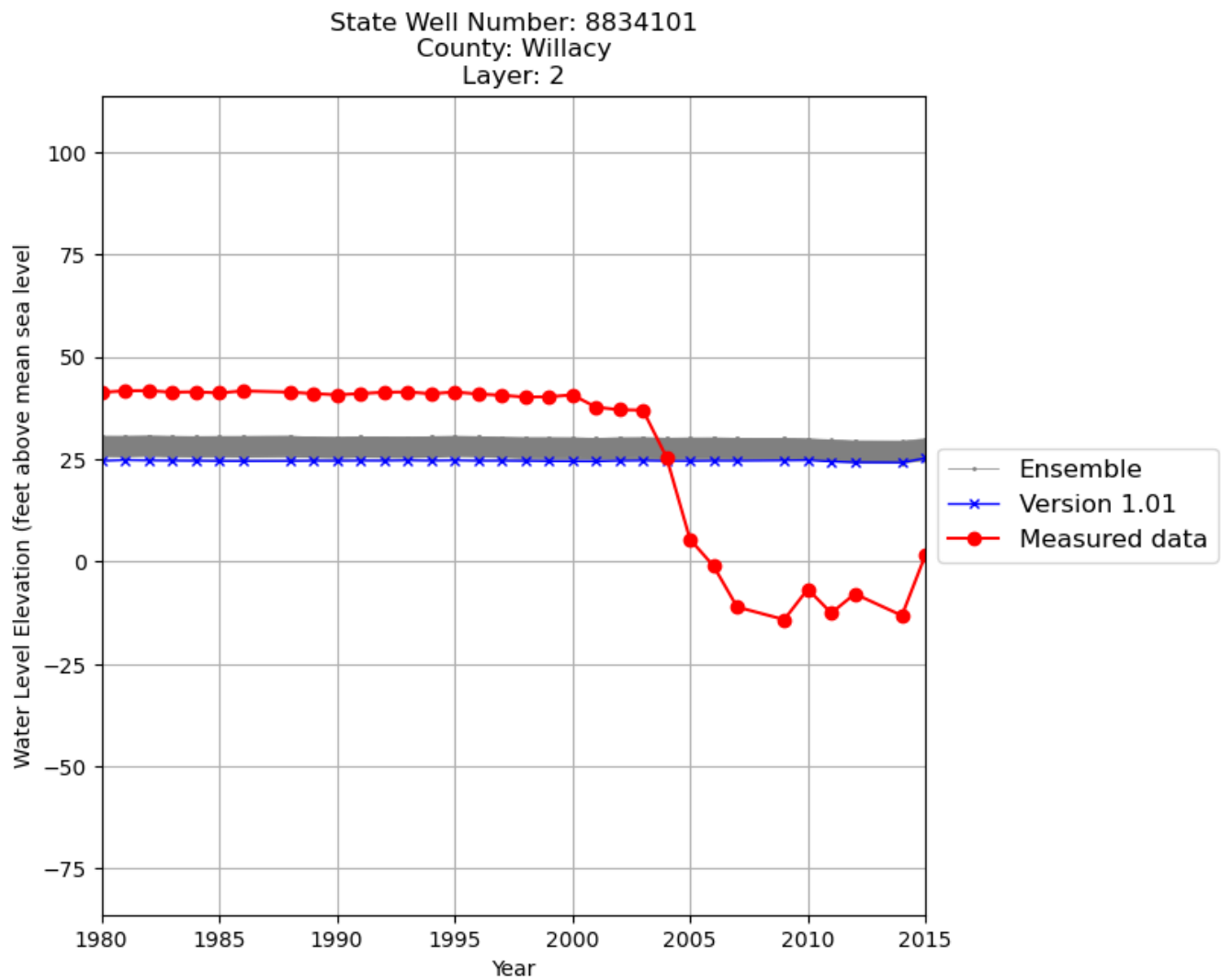
**Figure B.25: Ensemble hydrographs for state well number 7932802 in Refugio County.**



**Figure B.26: Ensemble hydrographs for state well number 7958201 in San Patricio County.**



**Figure B.27: Ensemble hydrographs for state well number 6638304 in Wharton County.**



**Figure B.28: Ensemble hydrographs for state well number 8834101 in Willacy County.**