



P.O. Box 13231, 1700 N. Congress Ave.  
Austin, TX 78711-3231, [www.twdb.texas.gov](http://www.twdb.texas.gov)  
Phone (512) 463-7847, Fax (512) 475-2053

## CATEGORICAL EXCLUSION

### TO ALL INTERESTED AGENCIES AND PUBLIC GROUPS:

As provided by the environmental review process adopted in the rules of the Texas Water Development Board (TWDB), 31 Texas Administrative Code (TAC) § 375.61, for projects to be funded through the Clean Water State Revolving Fund (CWSRF) and consistent with the National Environmental Policy Act, 42 United States Code § 4321, *et seq.*, the TWDB staff has determined that the proposed action identified below may be exempted from comprehensive environmental review requirements:

City of Hitchcock, Galveston County, Texas  
TWDB CWSRF Project No. 73949  
Collection System Improvements  
Phase 1  
Total Financing Amount: \$27,280,000  
Loan No. L1001809, LF1001810

The City of Hitchcock (City) is proposing to use \$27,280,000 in financing from the CWSRF program for the Hitchcock Collection System Improvements project to repair, or replace as needed, approximately ninety percent of the aging collection system and rehabilitate or replace manholes and service connections.

This Categorical Exclusion is completed for Phase 1 of the Collection System Improvements project, hereafter referred to as the proposed project. Because the system improvements are spread throughout a large area, subsequent portions of the project will be completed under separate environmental findings.

The City is currently under an Agreed Order from the Texas Commission on Environmental Quality due to significant health concerns related to the release of raw sewage into the environment. The existing wastewater collection system includes approximately 350,000 linear feet of gravity sanitary sewer.

Due to the aging infrastructure, significant amounts of infiltration and inflow occur, causing disruptions in the wastewater treatment process and causing numerous violations. The City's receiving waters are listed as impaired by the Texas Section 303(d) list for bacteria and dissolved oxygen. The City's sewer system included primarily clay and concrete pipe when initially installed beginning in the 1950s. Deterioration over time and poor soil conditions have degraded the integrity of the wastewater collection system. The City has been able to rehabilitate a portion of its small diameter sewer mains, but the remaining infrastructure is still in need of rehabilitation or replacement.

#### Our Mission

Leading the state's efforts  
in ensuring a secure  
water future for Texas

#### Board Members

L'Oreal Stepney, P.E., Chairwoman | Tonya R. Miller, Board Member  
Bryan McMath, Executive Administrator

Proposed project actions include a condition assessment of the system, television inspection and evaluation of the gravity sewer mains, and rehabilitation and/or replacement of the existing infrastructure. Approximately forty-five percent of the small diameter sewer mains and the entirety of the large-diameter mains are included in the project. It is anticipated that the small-diameter main will be rehabilitated by the trenchless pipe bursting method using high-density polyethylene. The large-diameter mains will be rehabilitated by cured-in-place pipe (CIPP) liner or by open-cut replacement due to possible capacity constraints. The jointless pipe from rehabilitation will mitigate inflow and infiltration from excessive rain and storm surge events. As two of the biggest sources of inflow and infiltration, service connections and manholes will also be replaced or rehabilitated. These improvements are expected to reduce inflow and infiltration, consequently removing extraneous flow from the system.

The TWDB may not fund testing, remediation, removal, disposal, or related works for contaminated or potentially contaminated materials. However, the project proponent should ensure that, if found, such materials are tested, removed, and disposed of in accordance with applicable state and federal laws.

There are no previously recorded significant or potentially significant historical or cultural sites within or adjacent to the project footprint, according to the Texas Historical Commission's Archeological Sites Atlas, nor is the proposed project within a protected area surrounding a historic cemetery, structure, or district. Where lines are proposed to cross creeks or potential wetlands which may qualify as waters of the United States, trenchless construction methods will be utilized for line rehabilitation or replacement. Due to proposed construction methods and the developed nature of the project area and vicinity, the proposed project is not expected to impact threatened or endangered species or habitat. However, the majority of the proposed project area is located within a 100-year floodplain, as designated by the Federal Emergency Management Agency (FEMA). Projects involving construction in the 100-year floodplain, including replacement or borings, require a floodplain development permit from the local floodplain administrator prior to construction in the 100-year floodplain.

The staff of the TWDB recommends issuance of a Categorical Exclusion (CE) for this project. The decision to grant this CE is allowed because the specified project elements will not cause significant adverse impacts to cultural and natural resources. Documentation supporting this determination is on file at the TWDB.

This determination shall be revoked if it is found that:

- (1) the project no longer meets the requirements for categorical exclusion from full environmental review as a result of changes in the project;
- (2) the project involves extraordinary circumstances as described in 31 TAC § 375.62; or
- (3) the project may violate or has violated federal, state, local, or tribal laws.

The proposed project must comply with the following special and standard environmental conditions:

Special Environmental Conditions

- Consistent with the Flood Insurance Reform Act of 2004, federal Executive Order 11988 as amended by EO 13690, Texas Water Code Section 16.315, and local floodplain development ordinances, a floodplain development permit will be obtained from the local floodplain administrator prior to construction in, across, or under a Special Flood Hazard Area, and any requirements contained therein will be adhered to.

Standard Environmental Conditions

- Consistent with the TWDB Supplemental Construction Contract Conditions (TWDB-0550), the City of Hitchcock (City) will abide by the standard emergency condition for the discovery of cultural resources.
- Consistent with the TWDB Supplemental Construction Contract Conditions (TWDB-0550), the City will abide by the standard emergency condition for the discovery of threatened and endangered species.

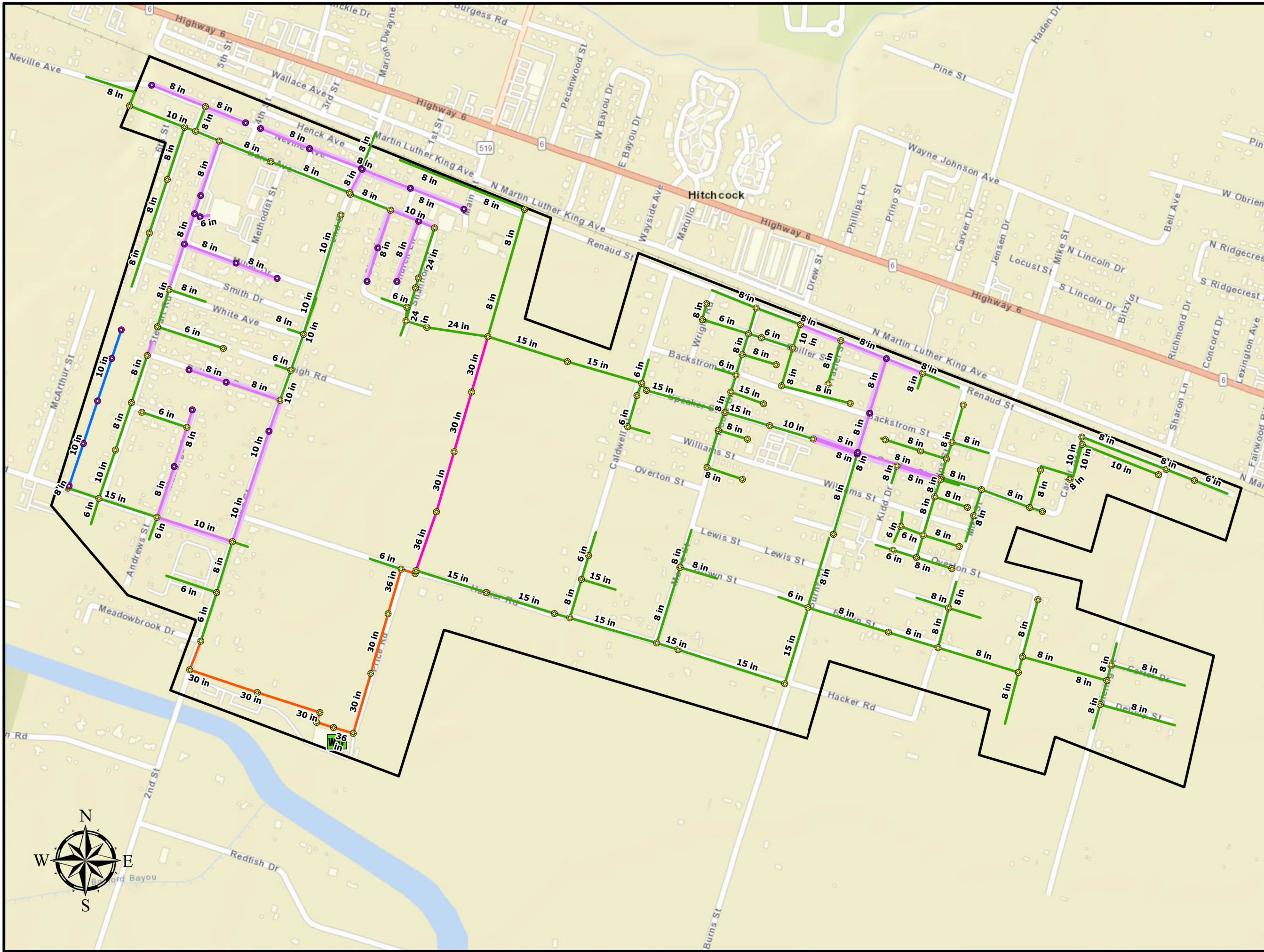
Comments regarding this determination may be submitted to the Director of Regional Water Project Development, Texas Water Development Board, P.O. Box 13231, Austin, Texas 78711-3231 or via email at [RWPD-Environmental@twdb.texas.gov](mailto:RWPD-Environmental@twdb.texas.gov).

Sincerely,

T. Clay Schultz, Ph.D., Director  
Regional Water Project Development

Enclosures

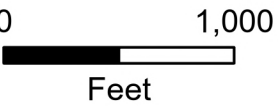




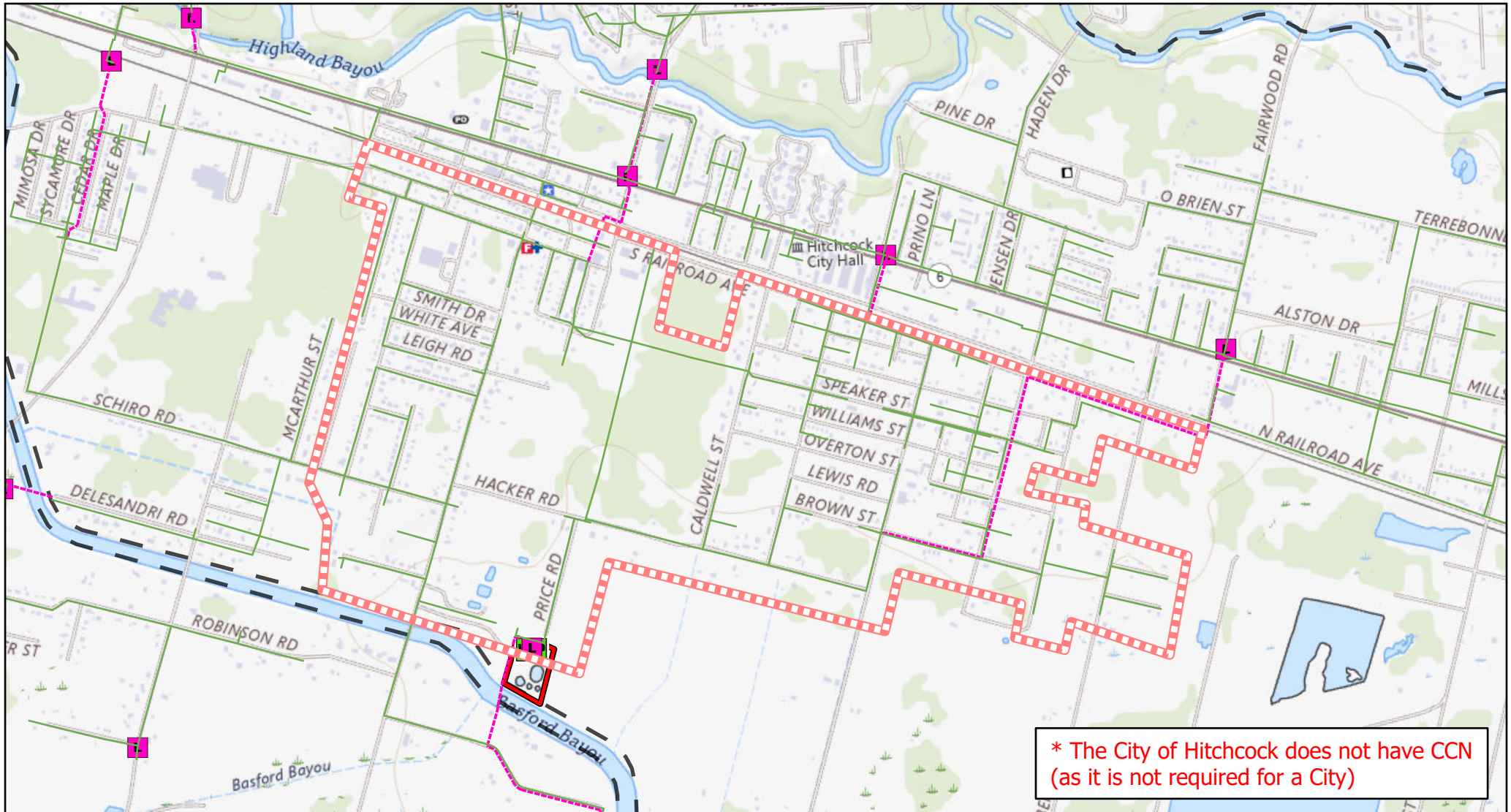
# Collection System Improvements

## Phase 1

- Manhole
- MH in Segment Previously PB
- Previously Pipe Burst
- New Construction
- Pipe Burst
- Open Cut
- CIPP
- WWTP
- Phase 1 Boundary







\* The City of Hitchcock does not have CCN (as it is not required for a City)



## City of Hitchcock Service Area



USGS The National Map: National Boundaries Dataset, 3DEP Elevation Program, Geographic Names Information System, National Hydrography Dataset, National Land Cover Database, National Structures Dataset, and National Transportation Dataset; USGS Global Ecosystems; U.S. Census Bureau TIGER/Line data; USFS Road data; Natural Earth Data; U.S. Department of State HIU; NOAA National Centers for Environmental Information. Data refreshed February, 2025., Sources: Esri, TomTom, Garmin, FAO, NOAA, USGS, © OpenStreetMap contributors, and the GIS User Community

Coordinate System: NAD 1983 Texas Statewide Mapping System

### Legend

- Phase 1 Design Limits
- Gravity Main
- Force Main
- Lift Station
- WWTWP

