



P.O. Box 13231, 1700 N. Congress Ave.
Austin, TX 78711-3231, www.twdb.texas.gov
Phone (512) 463-7847, Fax (512) 475-2053

CATEGORICAL EXCLUSION

TO ALL INTERESTED AGENCIES AND PUBLIC GROUPS:

As provided by the state environmental review process adopted in the rules of the Texas Water Development Board (TWDB), 31 Texas Administrative Code (TAC) § 371.41, for projects to be funded through the Drinking Water State Revolving Fund (DWSRF) Program and consistent with the National Environmental Policy Act, 42 United States Code § 4321, *et seq.*, the TWDB staff has determined that the proposed action identified below may be exempted from formal environmental review requirements:

D Bar B Water and Wastewater Supply Corporation, Dallas County, Texas
TWDB DWSRF Project No. 63030
Emergency Generator for Drinking Water System
Total Financing Amount: \$92,820
Loan No. LF1001954

The D Bar B Water and Wastewater Supply Corporation (Corporation) is proposing to use \$92,820 in financing from the DWSRF program for the Emergency Generator for Drinking Water System project to install an emergency generator at a well and pump station site, to include a concrete pad; and create an asset management plan. Environmental impacts of the proposed project will be similar to rehabilitation activities and limited to those associated with excavation for and installation of the generator slab.

The TWDB may not fund testing, remediation, removal, disposal, or related works for contaminated or potentially contaminated materials. However, the project proponent should ensure that, if found, such materials are tested, removed, and disposed of in accordance with applicable state and federal laws.

There are no previously recorded significant or potentially significant historical or cultural sites within or adjacent to the project footprint, according to the Texas Historical Commission's Archeological Sites Atlas, nor is the proposed project within a protected area surrounding a historic cemetery, structure, or district. The proposed project will not adversely impact waters of the United States, including wetlands, or impact threatened or endangered species or habitat. Potential golden cheeked warbler habitat may exist greater than 300 feet from the project site, which is outside the buffer for harassment due to construction activities.

The proposed project will be constructed within the 500-year (0.2 percent annual chance) floodplain, as designated by the Federal Emergency Management Agency (FEMA). Federal projects involving the construction of critical facilities within the 500-year floodplain require

Our Mission

Leading the state's efforts
in ensuring a secure
water future for Texas

Board Members

L'Oreal Stepney, P.E., Chairwoman | Tonya R. Miller, Board Member
Bryan McMath, Executive Administrator

floodproofing and a floodplain development permit from the Dallas County floodplain administrator prior to construction. According to the Corporation, the proposed generator slab will be located eight feet above the base flood elevation for the 0.2 percent annual chance.

The staff of the TWDB recommended the issuance of a Categorical Exclusion (CE) for this project. The decision to grant a CE is allowed because the specified project elements will not cause significant adverse impacts to the quality of the human environment or protected natural resources. Documentation supporting this determination is on file at the TWDB.

This determination shall be revoked if it is found that

- (1) the project no longer meets the requirements for categorical exclusion from full environmental review as a result of changes in the project;
- (2) the project involves extraordinary circumstances as described in 31 TAC §371.42;
or
- (3) the project may violate or has violated federal, state, local, or tribal laws.

The proposed project must comply with the following special and standard environmental conditions:

Special Environmental Conditions

- Consistent with the Flood Insurance Reform Act of 2004, federal Executive Order 11988, Texas Water Code Section 16.315, and local floodplain development ordinances, a floodplain development permit will be obtained from the local floodplain administrator prior to construction in, across, or under a Special Flood Hazard Area.

Standard Environmental Conditions

- Consistent with the TWDB Supplemental Construction Contract Conditions (TWDB-0551), the D Bar B Water and Wastewater Supply Corporation (Corporation) will abide by the standard emergency condition for the discovery of cultural resources.
- Consistent with the TWDB Supplemental Construction Contract Conditions (TWDB-0551), the Corporation will abide by the standard emergency condition for the discovery of threatened and endangered species.

Comments regarding this determination may be submitted to the Director of Regional Water Project Development, Texas Water Development Board, P.O. Box 13231, Austin, Texas 78711-3231 or via email at RWPD-Environmental@twdb.texas.gov.


Sincerely,

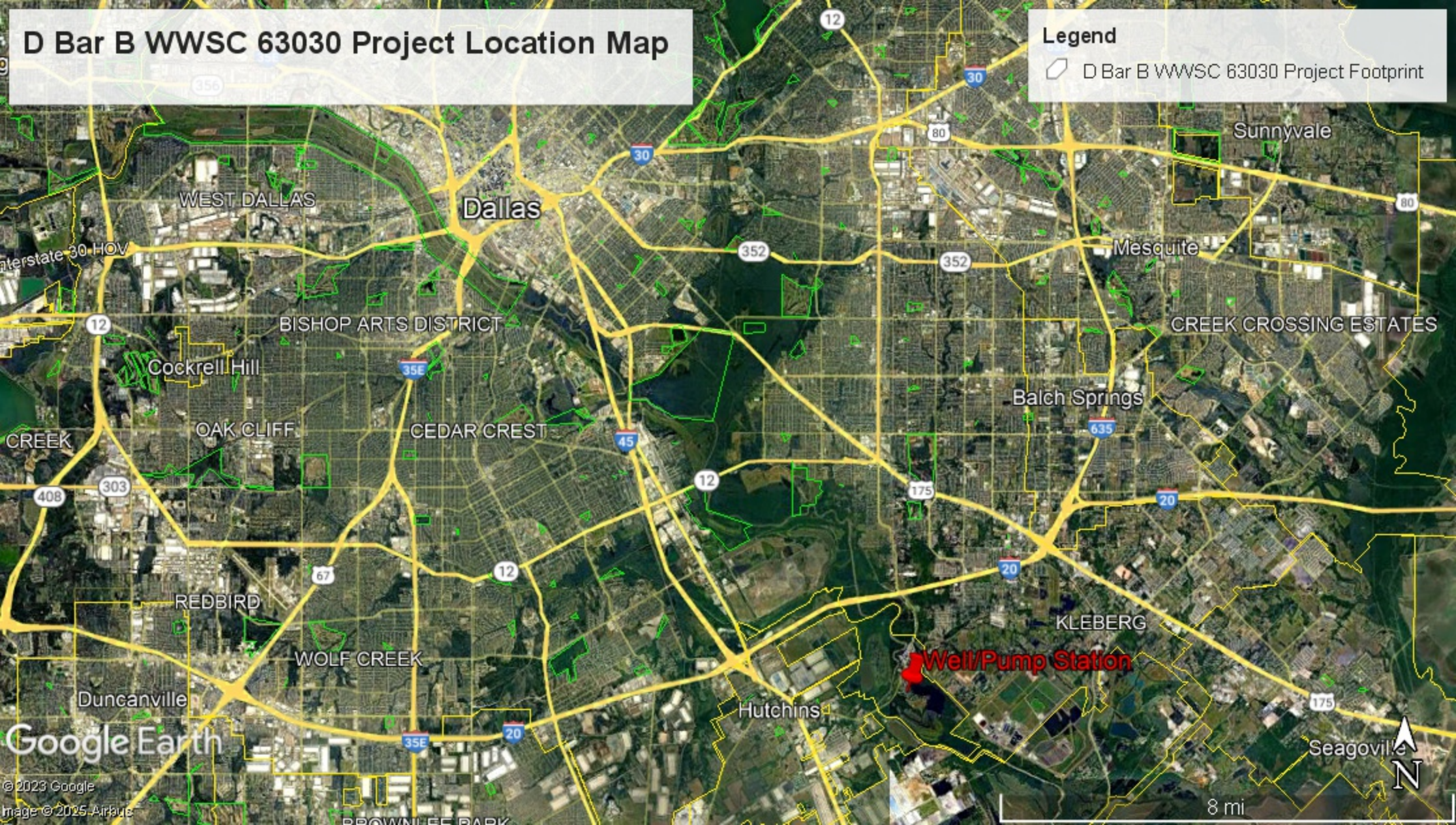
T. Clay Schultz, Ph.D., Director
Regional Water Project Development

Enclosures

D Bar B WWSC 63030 Project Location Map

Legend

 D Bar B WWSC 63030 Project Footprint




Google Earth

© 2023 Google
Image © 2025 Airbus

D Bar B WWSC 63030 Site Map

Legend

 D Bar B WWSC 63030 Project Footprint

D Bar Ranch Wb



Google Earth



200 ft