



P.O. Box 13231, 1700 N. Congress Ave.
Austin, TX 78711-3231, www.twdb.texas.gov
Phone (512) 463-7847, Fax (512) 475-2053

CATEGORICAL EXCLUSION

TO ALL INTERESTED AGENCIES AND PUBLIC GROUPS:

As provided by the environmental review process adopted in the rules of the Texas Water Development Board (TWDB), 31 Texas Administrative Code (TAC) § 371.41, for projects to be funded through the Drinking Water State Revolving Fund (DWSRF) Program and consistent with the National Environmental Policy Act, 42 United States Code § 4321, *et seq.*, the TWDB has determined that the proposed action identified below may be exempted from comprehensive environmental review requirements:

East Rio Hondo Water Supply Corporation, Cameron County, Texas
TWDB DWSRF Project No. 63010
Martha Ann Simpson Water Treatment Plant Dissolved Air Flotation System
Improvements and Harlingen Water Works System Pump Station Generator Project
Total Financing Amount: \$14,012,500
Commitment Nos. L1001904 and LF1001905

The East Rio Hondo Water Supply Corporation (Corporation) is proposing to use \$14,012,500 in financing from the DWSRF Program for the proposed Martha Ann Simpson Water Treatment Plant (MASWTP) improvements and Harlingen Water Works System pump station generator improvements. The MASWTP, located at 29528 Farm-to-Market Road (FM) 510 (2 miles west of FM 803) in San Benito, Texas, was constructed in the early 2000s and employs conventional treatment processes. The MASWTP treats eight million gallons of water per day conveyed primarily from the Rio Grande through a resaca and canal system to supply potable water to the northeastern portions of Cameron County. The Harlingen Water Works System pump station, located at 25373 FM 1595 (1.1 miles west of FM 106) in Harlingen, Texas, provides an interconnect with Harlingen Water Works System. The facility has a pump that brings water into the Corporation's pressurized system when additional water is needed. The system currently lacks a generator for emergency operations. The proposed improvements at the MASWTP include the construction of a pre-treatment unit with either a ballasted sedimentation system or a dissolved air flotation system and ancillary equipment, such as recycle pumps, a solids scraper system, stainless steel saturators, and air compressors. The proposed improvements at the Harlingen Water Works System pump station include the installation of a new 350-kilowatt diesel generator, automatic transfer switch, electrical feeders, grounding devices, and an elevated fuel tank. The proposed generator is an alternate power source for the pump station during power outages that frequently occur during natural disasters and other emergencies. The proposed project will be in the existing boundaries of the MASWTP and Harlingen Water Works System pump station and project activities are not proposed to occur in the 100-year floodplain, as designated by the Federal Emergency Management Agency.

Our Mission

Leading the state's efforts
in ensuring a secure
water future for Texas

Board Members

L'Oreal Stepney, P.E., Chairwoman | Tonya R. Miller, Board Member
Bryan McMath, Executive Administrator

Categorical Exclusion

East Rio Hondo Water Supply Corporation, Cameron County, Texas

TWDB DWSRF Project No. 63010

Martha Ann Simpson Water Treatment Plant Dissolved Air Flotation System Improvements and Harlingen Water Works System Pump Station Generator Project

Page 2

The TWDB may not fund testing, remediation, removal, disposal, or related works for contaminated or potentially contaminated materials. However, the Corporation should ensure that, if found, such materials are tested, removed, and disposed of in accordance with applicable state and federal laws.

Impacts will be similar to those associated with minor upgrades and rehabilitations at existing facilities and a new minor ancillary facility on the same property as the existing facility. There are no previously recorded significant or potentially significant historical or cultural sites within or adjacent to the proposed project footprint, according to the Texas Historical Commission's Archeological Sites Atlas, nor is the proposed project within a protected area surrounding a historic cemetery, structure, or district. The proposed project will not impact waters of the United States, including wetlands. The proposed project is not located within a Special Flood Hazard Area; therefore, coordination with the local floodplain administrator was not required. The proposed project, located within the existing water treatment plant and pump station, is not expected to impact threatened or endangered species or habitat.

The TWDB previously recommended the issuance of a Categorical Exclusion (CE) for the proposed project. The decision to grant this CE is allowed because the specified project elements will not cause significant adverse impacts to cultural and natural resources. Documentation supporting this determination is on file at the TWDB.

This determination shall be revoked if it is found that

- (1) the project no longer meets the requirements for categorical exclusion from full environmental review as a result of changes in the project;
- (2) the project involves extraordinary circumstances as described in 31 TAC § 371.42; or
- (3) the project may violate or has violated federal, state, local, or tribal laws.

The proposed project must comply with the following standard environmental conditions:

Standard Environmental Conditions

- Consistent with the Texas Water Development Board Supplemental Construction Contract Conditions (TWDB-0550), the East Rio Hondo Water Supply Corporation will abide by the standard emergency condition for the discovery of cultural resources.
- Consistent with the Texas Water Development Board Supplemental Construction Contract Conditions (TWDB-0550), the East Rio Hondo Water Supply Corporation will abide by the standard emergency condition for the discovery of threatened and endangered species.

Categorical Exclusion

East Rio Hondo Water Supply Corporation, Cameron County, Texas

TWDB DWSRF Project No. 63010

Martha Ann Simpson Water Treatment Plant Dissolved Air Flotation System Improvements
and Harlingen Water Works System Pump Station Generator Project

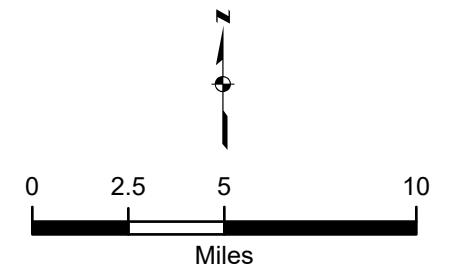
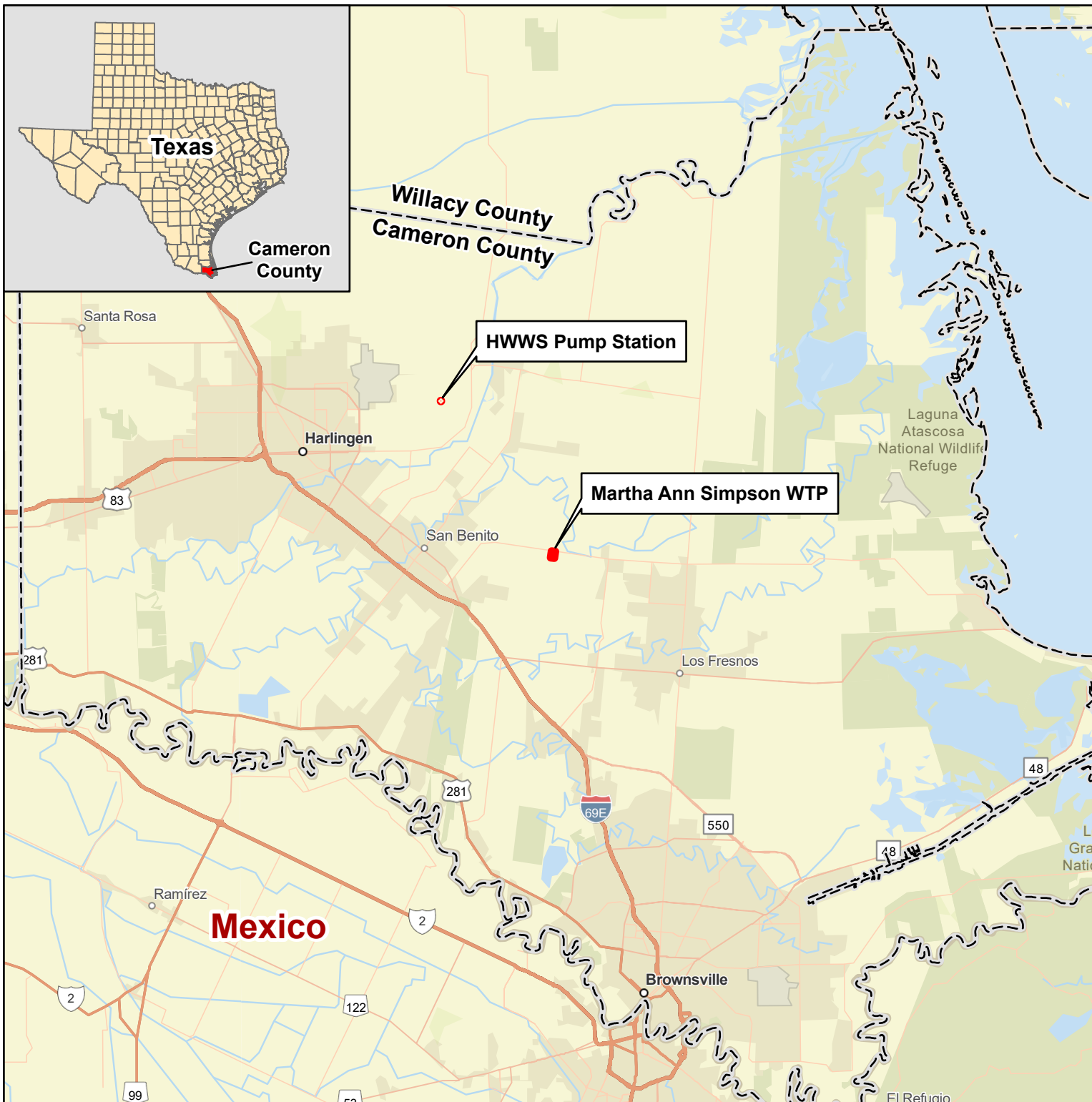
Page 3

Comments regarding this determination may be submitted to the Director of Regional Water
Project Development, Texas Water Development Board, P.O. Box 13231, Austin, Texas
78711-3231 or via email at RWPD-Environmental@twdb.texas.gov.

Sincerely,

T. Clay Schultz, Ph.D., Director
Regional Water Project Development

Enclosures



Legend

- Project Area
- County Boundary

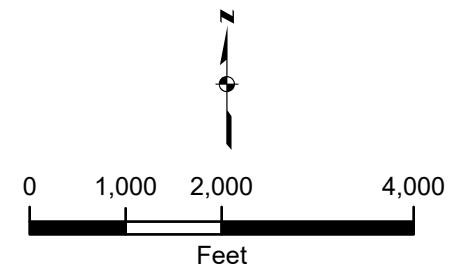
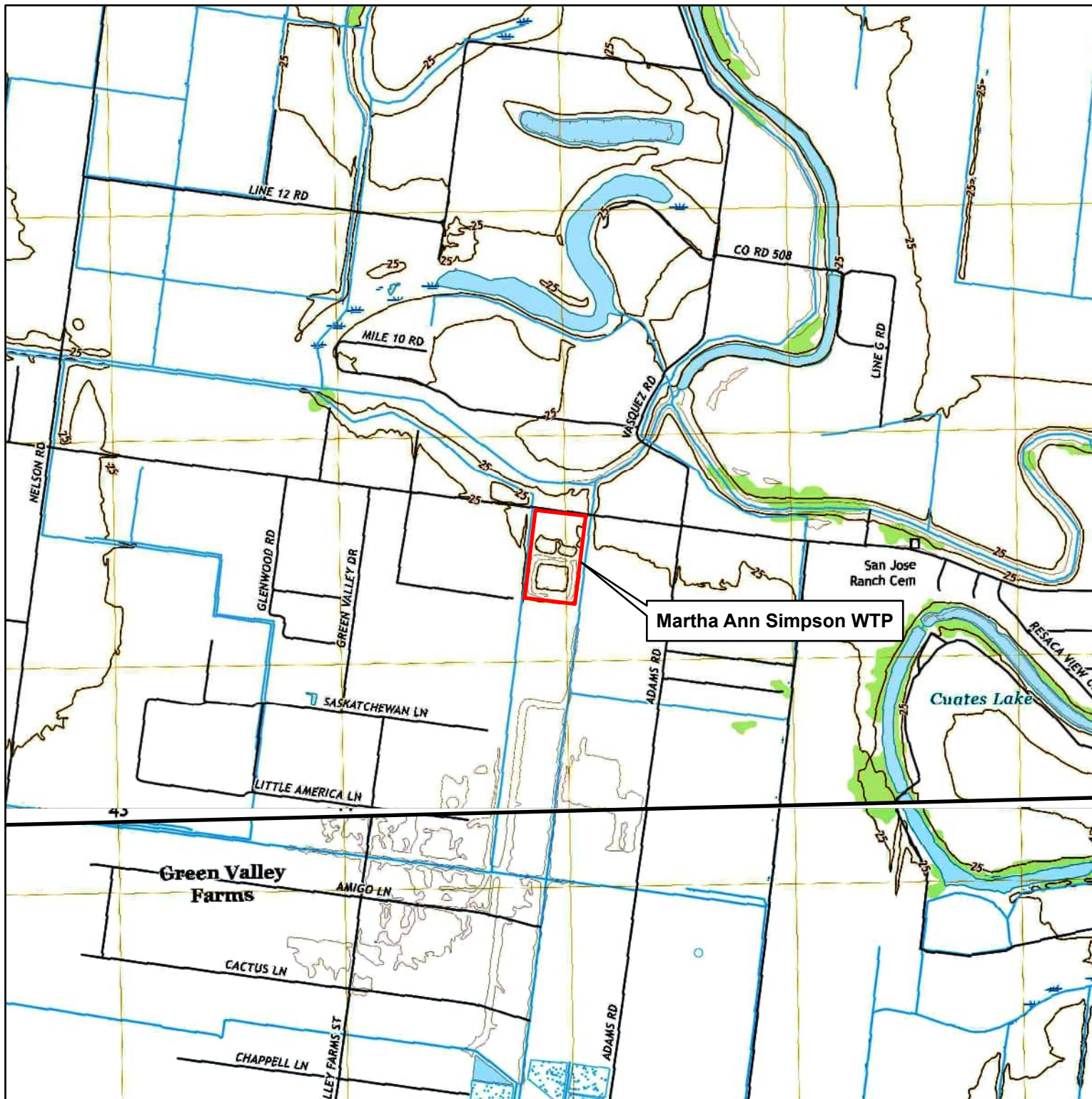
Notes:

- Map Center: 97.54996°W 26.13524°N
- World Street Map: Texas Parks & Wildlife, CONANP, Esri, TomTom, Garmin, Foursquare, SafeGraph, FAO, METI/NASA, USGS, EPA, NPS, USFWS

Martha Ann Simpson WTP DAF
Improvements
Cameron County, Texas
Date: 3/12/2025

Figure 1
Regional Location Map





Legend

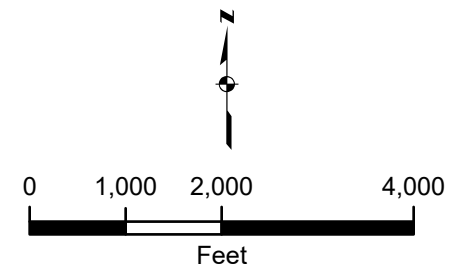
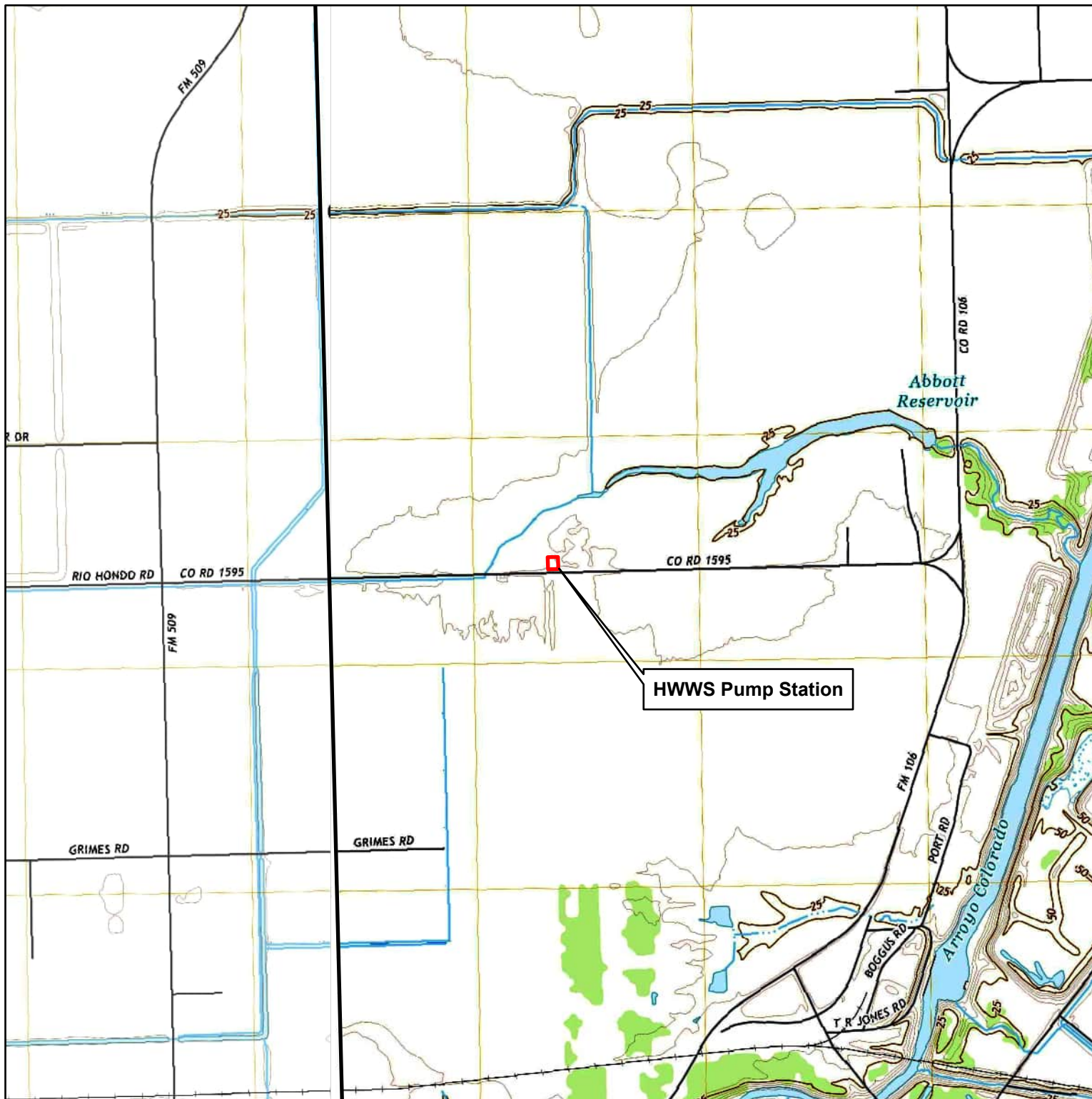
 Project Area

Notes:

1. Map Center: 97.55008°W 26.13533°N
2. World Topographic Map: Texas Parks & Wildlife, CONANP, Esri, TomTom, Garmin, Foursquare, SafeGraph, GeoTechnologies, Inc, METI/NASA, USGS, EPA, NPS, US Census Bureau, USDA, USFWS
World Hillshade: Esri, NASA, NGA, USGS, FEMA
3. USGS TopoView: "Rio Hondo, Texas", "Olmito, Texas", "Harlingen, Texas" 7.5-Minute Quadrangles (2022)

Martha Ann Simpson WTP DAF
Improvements
Cameron County, Texas
Date: 3/12/2025

Figure 2.1
2022 USGS Topographic Map



Legend

 Project Area

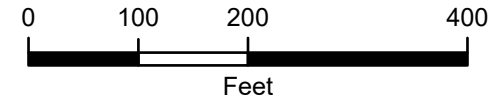
Notes:

1. Map Center: 97.61503°W 26.21726°N
2. World Topographic Map: Texas Parks & Wildlife, CONANP, Esri, TomTom, Garmin, Foursquare, SafeGraph, GeoTechnologies, Inc, METI/NASA, USGS, EPA, NPS, US Census Bureau, USDA, USFWS
World Hillshade: Esri, NASA, NGA, USGS, FEMA
3. USGS TopoView: "Rio Hondo, Texas", "Olmito, Texas", "Harlingen, Texas" 7.5-Minute Quadrangles (2022)

Martha Ann Simpson WTP DAF
Improvements
Cameron County, Texas
Date: 3/12/2025

Figure 2.2
2022 USGS Topographic Map





Legend

 Project Area

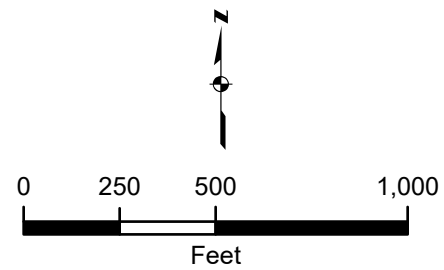
Notes:

1. Map Center: 97.55033°W 26.13529°N
2. Nearmap WMS Server: 2025


Martha Ann Simpson WTP DAF
Improvements
Cameron County, Texas
Date: 3/12/2025

Figure 3
Project Footprint Map







Legend

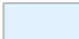
 Project Area

USGS NHD

 Stream/River

FEMA Flood Zone

 Area of Minimal Flood Hazard

 100-Year Floodplain

Notes:

1. Map Center: 97.55008°W 26.13533°N
2. Nearmap WMS Server: 2025
3. USGS National Hydrography Dataset
4. FMEA National Flood Hazard Layer

Martha Ann Simpson WTP DAF
Improvements
Cameron County, Texas
Date: 3/12/2025

Figure 4.1
Floodplain Map

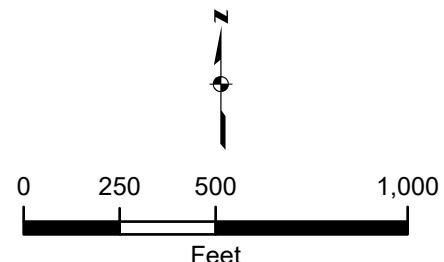


Legend


- Proposed Pretreatment Unit Location
- Martha Ann Simpson Plant
- FEMA 100 Year Floodplain

*The 0.2% annual chance floodplain (500-year floodplain) is not present within the current map extent.


0 100 200 400 US Feet




Legend

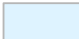
 Project Area

USGS NHD

 Stream/River

FEMA Flood Zone

 Area of Minimal Flood Hazard

 100-Year Floodplain

Notes:

1. Map Center: 97.61503°W 26.21726°N
2. Nearmap WMS Server: 2025
3. USGS National Hydrography Dataset
4. FMEA National Flood Hazard Layer

Martha Ann Simpson WTP DAF
Improvements
Cameron County, Texas
Date: 3/12/2025

Figure 4.2
Floodplain Map