
**GAM RUN 21-013 MAG:
MODELED AVAILABLE GROUNDWATER
FOR THE AQUIFERS IN
GROUNDWATER MANAGEMENT AREA 8**

Jerry Shi, Ph.D., P.G. and Jevon Harding, P.G.

Texas Water Development Board

Groundwater Division

Groundwater Modeling Department

512-463-5076

November 1, 2022

This page is intentionally left blank.

Geoscientist Seals

The following professional geoscientists contributed to this conceptual model report and associated data compilation and analyses:

Jianyou (Jerry) Shi, Ph.D., P.G.

Dr. Shi was responsible for the calculations to verify the attainability of desired future conditions and the calculations of modeled available groundwater values. He was the primary author of the report.


Signature



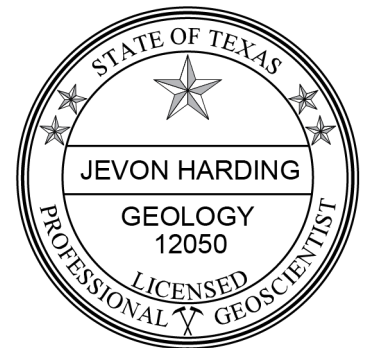
11/10/2022
Date

Jevon Harding, P.G.

Ms. Harding was responsible for editing the report and adding additional documentation as necessary to meet TWDB standards after Dr. Shi had left the agency.


Signature

11/3/2022
Date



GAM RUN 21-013 MAG: MODELED AVAILABLE GROUNDWATER FOR THE AQUIFERS IN GROUNDWATER MANAGEMENT AREA 8

Jerry Shi, Ph.D., P.G. and Jevon Harding, P.G.
Texas Water Development Board
Groundwater Division
Groundwater Modeling Department
512-463-5076
November 1, 2022

EXECUTIVE SUMMARY:

The Texas Water Development Board (TWDB) has prepared estimates of the modeled available groundwater for the Trinity, Woodbine, Edwards (Balcones Fault Zone), Marble Falls, Ellenburger-San Saba, and Hickory aquifers in Groundwater Management Area 8. The modeled available groundwater estimates are based on the revised desired future conditions for these aquifers adopted by groundwater conservation districts in Groundwater Management Area 8 on July 26, 2022. The district representatives declared the Nacatoch, Blossom, Brazos River Alluvium, and Cross Timbers aquifers to be non-relevant for purposes of joint planning. After review, the TWDB determined that the explanatory report and other materials submitted by the district representatives were administratively complete on September 23, 2022.

The modeled available groundwater values are summarized by decade by groundwater conservation district and county (Tables 1 through 12) and by county, regional water planning area, and river basin for use in the regional water planning process (Tables 13 through 24). The modeled available groundwater in Groundwater Management Area 8 is described below:

- Trinity Aquifer (Paluxy aquifer) – The modeled available groundwater is approximately 24,520 acre-feet per year during the period from 2020 to 2080.
- Trinity Aquifer (Glen Rose Formation) – The modeled available groundwater is approximately 12,410 acre-feet per year during the period from 2020 to 2080.

- Trinity Aquifer (Twin Mountains Formation) – The modeled available groundwater is approximately 45,510 acre-feet per year during the period from 2020 to 2080.
- Trinity Aquifer (Travis Peak Formation) – The modeled available groundwater is approximately 98,230 acre-feet per year during the period from 2020 to 2080.
- Trinity Aquifer (Hensell aquifer) – The modeled available groundwater is approximately 27,120 acre-feet per year during the period from 2020 to 2080.
- Trinity Aquifer (Hosston aquifer) – The modeled available groundwater is approximately 67,730 acre-feet per year during the period from 2020 to 2080.
- Trinity Aquifer (Antlers Formation) – The modeled available groundwater is approximately 78,440 acre-feet per year during the period from 2020 to 2080.
- Woodbine Aquifer – The modeled available groundwater is approximately 30,570 acre-feet per year during the period from 2020 to 2080.
- Edwards (Balcones Fault Zone) Aquifer – The modeled available groundwater is approximately 15,170 acre-feet per year during the period from 2020 to 2080.
- Marble Falls Aquifer – The modeled available groundwater is approximately 5,630 acre-feet per year during the period from 2020 to 2080.
- Ellenburger-San Saba Aquifer – The modeled available groundwater is approximately 14,060 acre-feet per year during the period from 2020 to 2080.
- Hickory Aquifer – The modeled available groundwater is approximately 3,580 acre-feet per year during the period from 2020 to 2080.

Modeled available groundwater estimates are also provided by outcrop and downdip areas for the counties within Upper Trinity Groundwater Conservation District to be consistent with that district's desired future conditions statements.

The modeled available groundwater values estimated for counties may be slightly different from those estimated for groundwater conservation districts because of the process for rounding the values.

REQUESTOR:

Mr. Drew Satterwhite, General Manager of North Texas Groundwater Conservation District and Groundwater Management Area 8 Coordinator at the time of request.

DESCRIPTION OF REQUEST:

In a letter dated January 4, 2022, Mr. Drew Satterwhite provided the TWDB with the desired future conditions of the Trinity Aquifer subunits (Paluxy, Glen Rose, Twin Mountains, Travis Peak, Hensell, Hosston, and Antlers formations), and the Woodbine, Edwards (Balcones Fault Zone), Marble Falls, Ellenburger-San Saba, and Hickory aquifers. After review of the submittal, the TWDB identified missing or corrupted model files and received updated versions from Groundwater Management Area 8 on March 3, 2022. Following the TWDB analysis to verify the achievability of the adopted desired future conditions, the TWDB identified desired future conditions that were unachievable. Groundwater Management Area 8 confirmed that these were typos and adopted a revised version of the desired future conditions resolution on July 26, 2022. The following sections present the final adopted desired future conditions:

Trinity and Woodbine aquifers

The desired future conditions for the Trinity and Woodbine aquifers are expressed as water level decline, or drawdown, in feet from January 1, 2010, to December 31, 2080 (Groundwater Management Area 8, 2021).

The county-based desired future conditions for the Trinity Aquifer subunits, excluding counties in the Upper Trinity Groundwater Conservation District, are listed in Table 1 (dashes indicate areas where the subunits do not exist):

TABLE 1. DESIRED FUTURE CONDITIONS IN GROUNDWATER MANAGEMENT AREA (GMA) 8 SUMMARIZED BY COUNTY FOR THE NORTHERN TRINITY AND WOODBINE AQUIFERS. VALUES REPRESENT AVERAGE DRAWDOWN IN FEET BETWEEN JANUARY 1, 2010, AND DECEMBER 31, 1980.

County	Woodbine	Paluxy	Glen Rose	Twin Mountains	Travis Peak	Hensell	Hosston	Antlers
Bell	—	17	83	—	333	145	375	—
Bosque	—	6	53	—	189	139	232	—
Bowie	—	—	—	—	—	—	—	—
Brown	—	—	1	—	2	1	1	2
Burnet	—	—	2	—	19	7	21	—
Callahan	—	—	—	—	—	—	—	1
Collin	482	729	366	560	—	—	—	596
Comanche	—	—	2	—	4	2	3	12

TABLE 2 (CONT). DESIRED FUTURE CONDITIONS IN GROUNDWATER MANAGEMENT AREA (GMA) 8 SUMMARIZED BY COUNTY FOR THE NORTHERN TRINITY AND WOODBINE AQUIFERS. VALUES REPRESENT AVERAGE DRAWDOWN IN FEET BETWEEN JANUARY 1, 2010, AND DECEMBER 31, 1980.

County	Woodbine	Paluxy	Glen Rose	Twin Mountains	Travis Peak	Hensell	Hosston	Antlers
Cooke	2	—	—	—	—	—	—	191
Coryell	—	5	15	—	107	70	141	—
Dallas	137	346	288	515	415	362	419	—
Delta	—	279	198	—	202	—	—	—
Denton	22	558	367	752	—	—	—	416
Eastland	—	—	—	—	—	—	—	4
Ellis	76	128	220	413	380	290	390	—
Erath	—	6	6	8	25	12	35	14
Falls	—	159	238	—	505	296	511	—
Fannin	259	709	305	400	291	—	—	269
Franklin	—	—	—	—	—	—	—	—
Grayson	163	943	364	445	—	—	—	364
Hamilton	—	2	4	—	26	14	38	—
Hill	20	45	149	—	365	211	413	—
Hopkins	—	—	—	—	—	—	—	—
Hunt	631	610	326	399	350	—	—	—
Johnson	4	-57	66	184	235	120	329	—
Kaufman	242	311	305	427	372	349	345	—
Lamar	42	100	107	—	125	—	—	132
Lampasas	—	—	1	—	6	1	11	—
Limestone	—	199	301	—	433	214	445	—
McLennan	6	41	148	—	504	242	582	—
Milam	—	—	241	—	412	261	412	—
Mills	—	1	1	—	9	2	13	—
Navarro	110	139	266	—	343	295	343	—
Rains	—	—	—	—	—	—	—	—
Red River	2	24	40	—	57	—	—	15
Rockwall	275	433	343	466	—	—	—	—
Somervell	—	4	4	50	64	17	120	—
Tarrant	6	105	163	348	—	—	—	177
Taylor	—	—	—	—	—	—	—	0
Travis	—	—	90	—	219	68	226	—
Williamson	—	—	78	—	220	89	225	—

The desired future conditions for the counties in the Upper Trinity Groundwater Conservation District are further divided into outcrop and downdip areas, and are listed in Table 2 (dashes indicate areas where the subunits do not exist):

TABLE 2. THE DESIRED FUTURE CONDITIONS FOR THE UPPER TRINITY GROUNDWATER CONSERVATION DISTRICT IN GROUNDWATER MANAGEMENT AREA (GMA) 8 SUMMARIZED BY AQUIFER. VALUES REPRESENT AVERAGE DRAWDOWN IN FEET BETWEEN JANUARY 1, 2010, AND DECEMBER 31, 1980.

County	Antlers	Paluxy	Glen Rose	Twin Mountains
Hood -Outcrop	—	6	9	13
Hood-Downdip	—	—	39	72
Montague-Outcrop	40	—	—	—
Montague-Downdip	—	—	—	—
Parker-Outcrop	42	6	20	7
Parker-Downdip	—	2	50	68
Wise-Outcrop	60	—	—	—
Wise-Downdip	154	—	—	—

Edwards (Balcones Fault Zone) Aquifer

The desired future conditions adopted by Groundwater Management Area 8 for the Edwards (Balcones Fault Zone) Aquifer are to maintain minimum streamflow and springflow under a repeat of the drought of record in Bell, Travis, and Williamson counties from January 1, 2010, to December 31, 2080 (Groundwater Management Area 8, 2021).

The desired future conditions are listed in Table 3:

TABLE 3. THE DESIRED FUTURE CONDITIONS IN GROUNDWATER MANAGEMENT AREA (GMA) 8 BASED ON SPRING/STREAM FLOW FOR SELECTED COUNTIES. THESE CONDITIONS ARE TO BE MAINTAINED BETWEEN JANUARY 1, 2010, AND DECEMBER 31, 1980.

County	Adopted Desired Future Condition
Bell	Maintain at least 100 acre-feet per month of stream/spring flow in Salado Creek during a repeat of the drought of record
Travis	Maintain at least 42 acre-feet per month of aggregated stream/spring flow during a repeat of the drought of record
Williamson	Maintain at least 60 acre-feet per month of aggregated stream/spring flow during a repeat of the drought of record

Marble Falls, Ellenburger-San Saba, and Hickory aquifers

The desired future conditions for the Marble Falls, Ellenburger-San Saba, and Hickory aquifers in Brown, Burnet, Lampasas, and Mills counties are defined as water level decline, or drawdown, in feet from January 1, 2010, to December 31, 2080 (Groundwater Management Area 8, 2021). The desired future conditions are listed in Table 4:

TABLE 4. DESIRED FUTURE CONDITIONS IN GROUNDWATER MANAGEMENT AREA (GMA) 8 SUMMARIZED BY COUNTY FOR THE LLANO UPLIFT AQUIFERS. VALUES REPRESENT AVERAGE DRAWDOWN IN FEET BETWEEN JANUARY 1, 2010, AND DECEMBER 31, 1980.

County	Ellenburger-San Saba	Hickory	Marble Falls
Brown	3	3	3
Burnet	12	11	11
Lampasas	16	16	16
Mills	9	9	9

METHODS:

The desired future conditions for Groundwater Management Area 8 are based on multiple criteria. The methods to calculate the desired future conditions are discussed below.

Trinity and Woodbine aquifers

The desired future conditions for the Trinity and Woodbine aquifers in Groundwater Management Area 8 are based on the predictive simulation “Run 11” (Groundwater Management area 8, 2021), which was constructed as an extension of the groundwater availability model for the northern portion of the Trinity and Woodbine aquifers (Kelley and others, 2014).

The average drawdowns between January 1, 2010 (initial water levels) and December 31, 2080 (stress period 71) were calculated using a composite water levels methodology, described in Appendix A. Appendix A also presents the calculated average drawdown results for the Trinity and Woodbine aquifers that the TWDB used to verify that the pumping scenario in the submitted model files achieved the desired future conditions. The modeled available groundwater values were determined by extracting pumping rates by decade from the MODFLOW cell-by-cell budget files using custom Fortran scripts developed by the TWDB.

Edwards (Balcones Fault Zone) Aquifer

Groundwater Management Area 8 requested that the results from the previous GAM Run 08-010 MAG (Anaya, 2008) be used, unchanged, for the current round of joint planning. That model run includes a ten-year predictive period that represents a simulated repeat of the drought of record in the 1950s. The modeled available groundwater values were determined using the monthly stress period within that predictive period with the lowest monthly springflow volume, which was assumed to represent the worst-case scenario for Salado Springs during a potential repeat of the 1950s drought of record.

Marble Falls, Ellenburger-San Saba, and Hickory aquifers

The desired future conditions for the Marble Falls, Ellenburger-San Saba, and Hickory aquifers in Brown, Burnet, Lampasas, and Mills counties within Groundwater Management Area 8 are based on a predictive simulation constructed by Groundwater Management Area 8 for planning purposes (Groundwater Management Area 8, 2021). This simulation is an extension of the groundwater availability model for the minor aquifers in the Llano Uplift region by Shi and others (2016). Modeled water levels were extracted for January 1, 2010 (initial water levels) and December 31, 2080 (stress period 71) and drawdown calculated as the difference in water level between those two endpoints. Drawdown averages were calculated by aquifer for each area specified in the desired future conditions. Additional details on the predictive simulation and methods to calculate the drawdowns are described in Appendix B. Appendix B also presents the calculated average drawdown results for the Marble Falls, Ellenburger-San Saba, and Hickory aquifers that the TWDB used to verify that the pumping scenario in the submitted model files achieved the desired future conditions. The modeled available groundwater values were determined by extracting pumping rates by decade from the MODFLOW cell-by-cell budget files using custom Fortran scripts developed by the TWDB.

Modeled Available Groundwater and Permitting

As defined in Chapter 36 of the Texas Water Code (2011), “modeled available groundwater” is the estimated average amount of water that may be produced annually to achieve a desired future condition. Groundwater conservation districts are required to consider modeled available groundwater, along with several other factors, when issuing permits in order to manage groundwater production to achieve the desired future condition(s). The other factors districts must consider include annual precipitation and production patterns, the estimated amount of pumping exempt from permitting, existing permits, and a reasonable estimate of actual groundwater production under existing permits.

PARAMETERS AND ASSUMPTIONS:

The parameters and assumptions for the groundwater availability simulations are described below:

Trinity and Woodbine Aquifers

- Version 2.01 of the updated groundwater availability model for the northern Trinity and Woodbine aquifers was the base model for this analysis. See Kelley and others (2014) for the assumptions and limitations of the historical calibrated model. Groundwater Management Area 8 constructed a predictive model simulation to

extend the base model to 2080 for planning purposes. See Appendix E of Groundwater Management Area 8 (2021) for the assumptions of this predictive model simulation.

- The predictive model was run with MODFLOW-NWT (Niswonger and others, 2011).
- The model has eight layers that represent units younger than the Woodbine Aquifer and the shallow outcrop of all aquifers (Layer 1), the Woodbine Aquifer (Layer 2), the Fredericksburg and Washita units (Layer 3), and various combinations of the subunits that comprise the Trinity Aquifer (Layers 4 to 8).
- To be consistent with Groundwater Management Area 8, the TWDB model grid files dated August 26, 2015 (*trnt_n_grid_poly082615.csv* and *wdbn_grid_poly082615.csv* for the Trinity and Woodbine aquifers, respectively) were used to assign model cells to counties, groundwater management areas, groundwater conservation districts, river basins, and regional water planning areas.
- Drawdown was calculated as the difference in modeled water levels between the baseline date of January 1, 2010 (initial water levels) and the final date of December 31, 2080 (stress period 71) using a composite water level methodology described in Appendix A.
- During the predictive simulation model run, some model cells went dry, meaning the modeled water level fell below the bottom of the cell. The dry cell count at the baseline date of January 1, 2010 (initial water levels) and final date of December 31, 2080 (stress period 71) is presented in Table C1 of Appendix C. Appendix A describes how dry cells were handled in the drawdown calculations using the composite water level methodology. Pumping in dry cells was excluded from the modeled available groundwater calculations.
- The drawdown averages and modeled available groundwater values were calculated using the official TWDB boundaries for the Trinity and Woodbine aquifers.
- Estimates of modeled drawdown and available groundwater from the model simulation were rounded to whole numbers.

Edwards (Balcones Fault Zone) Aquifer

- Version 1.01 of the groundwater availability model for the northern segment of the Edwards (Balcones Fault Zone) Aquifer was the base model for this analysis. See Jones (2003) for the assumptions and limitations of the historical calibrated model. During the previous planning cycle, a predictive model simulation was constructed

to extend the base model and include a simulated repeat of the 1950s drought of record for planning purposes. See the previous GAM Run 08-010 MAG (Anaya, 2008) for the assumptions of this predictive model simulation.

- The model has one layer that represents the Edwards (Balcones Fault Zone) Aquifer.
- The model was run with MODFLOW-96 (Harbaugh and McDonald, 1996).
- The modeled available groundwater values were determined using the monthly stress period within the predictive drought period with the lowest monthly springflow volume, which was assumed to represent the worst-case scenario for Salado Springs during a potential repeat of the 1950s drought of record.
- The modeled available groundwater values were calculated using the official TWDB Edwards (Balcones Fault Zone) Aquifer boundary.
- To be consistent with Groundwater Management Area 8, the TWDB model grid file dated August 26, 2015 (*ebfz_n_grid_poly082615.csv*) was used to assign model cells to counties, groundwater management areas, groundwater conservation districts, river basins, and regional water planning areas.
- Estimates of modeled streamflow and springflow from the model simulation were rounded to whole numbers.

Marble Falls, Ellenburger-San Saba, and Hickory Aquifers

- Version 1.01 of the groundwater availability model for the minor aquifers in the Llano Uplift region was the base model for this analysis. See Shi and others (2016) for the assumptions and limitations of the historical calibrated model. Groundwater Management Area 8 constructed a predictive model simulation to extend the base model to 2080 for planning purposes. See Groundwater Management Area 8 (2021) for the assumptions of this predictive model simulation.
- The model has eight layers: Layer 1 (the Trinity Aquifer, Edwards-Trinity (Plateau) Aquifer, and younger alluvium deposits), Layer 2 (confining units), Layer 3 (the Marble Falls Aquifer and equivalent unit), Layer 4 (confining units), Layer 5 (Ellenburger-San Saba Aquifer and equivalent unit), Layer 6 (confining units), Layer 7 (the Hickory Aquifer and equivalent unit), and Layer 8 (Precambrian units).
- The model was run with MODFLOW-USG beta (development) version (Panday and others, 2013).
- To be consistent with Groundwater Management Area 8, the TWDB model grid file dated January 7, 2016 (*lnup_grid_poly010716.csv*) was used to assign model cells to

counties, groundwater management areas, groundwater conservation districts, river basins, and regional water planning areas.

- Drawdown was calculated as the difference in modeled water level between the baseline date of January 1, 2010 (initial water levels) and the final date of December 31, 2080 (stress period 71), using the methodology described in Appendix B.
- During the predictive model run, some active model cells went dry, meaning the modeled water level fell below the bottom of the cell. The dry cell count at the baseline date of January 1, 2010 (initial water levels) and final date of December 31, 2080 (stress period 71) is presented in Table C2 of Appendix C). Appendix B describes how dry cells were handled in the drawdown calculations. Pumping in dry cells was excluded from the modeled available groundwater.
- To be consistent with the desired future conditions defined by Groundwater Management Area 8, the drawdown averages and modeled available groundwater values were calculated using the active model extent of Layers 3, 5, and 7 (Figures 10 through 12) for the Marble Falls, Ellenburger-San Saba, and Hickory aquifers, respectively, rather than the official TWDB boundaries for these aquifers.
- Estimates of modeled drawdown and available groundwater from the model simulation were rounded to whole numbers.

RESULTS:

The modeled available groundwater for the Trinity, Woodbine, Edwards (Balcones Fault Zone), Marble Falls, Ellenburger-San Saba, and Hickory aquifers are listed below:

- Trinity Aquifer (Paluxy aquifer) – The modeled available groundwater is approximately 24,520 acre-feet per year during the period from 2020 to 2080. Values are summarized by groundwater conservation district and county (Table 5) and by county, regional water planning group, and river basin (Table 17).
- Trinity Aquifer (Glen Rose Formation) – The modeled available groundwater is approximately 12,410 acre-feet per year during the period from 2020 to 2080. Values are summarized by groundwater conservation district and county (Table 6) and by county, regional water planning group, and river basin (Table 18).
- Trinity Aquifer (Twin Mountains Formation) – The modeled available groundwater is approximately 45,510 acre-feet per year during the period from 2020 to 2080. Values are summarized by groundwater conservation district and county (Table 7) and by county, regional water planning group, and river basin (Table 19).

- Trinity Aquifer (Travis Peak Formation) – The modeled available groundwater is approximately 98,230 acre-feet per year during the period from 2020 to 2080. Values are summarized by groundwater conservation district and county (Table 8) and by county, regional water planning group, and river basin (Table 20).
- Trinity Aquifer (Hensell aquifer) – The modeled available groundwater is approximately 27,120 acre-feet per year during the period from 2020 to 2080. Values are summarized by groundwater conservation district and county (Table 9) and by county, regional water planning group, and river basin (Table 21).
- Trinity Aquifer (Hosston aquifer) – The modeled available groundwater is approximately 67,730 acre-feet per year during the period from 2020 to 2080. Values are summarized by groundwater conservation district and county (Table 10) and by county, regional water planning group, and river basin (Table 22).
- Trinity Aquifer (Antlers Formation) – The modeled available groundwater is approximately 78,440 acre-feet per year during the period from 2020 to 2080. Values are summarized by groundwater conservation district and county (Table 11) and by county, regional water planning group, and river basin (Table 23).
- Woodbine Aquifer – The modeled available groundwater is approximately 30,570 acre-feet per year during the period from 2020 to 2080. Values are summarized by groundwater conservation district and county (Table 12) and by county, regional water planning group, and river basin (Table 24).
- Edwards (Balcones Fault Zone) Aquifer – The modeled available groundwater is approximately 15,170 acre-feet per year during the period from 2020 to 2080. Values are summarized by groundwater conservation district and county (Table 13) and by county, regional water planning group, and river basin (Table 25).
- Marble Falls Aquifer – The modeled available groundwater is approximately 5,630 acre-feet per year during the period from 2020 to 2080. Values are summarized by groundwater conservation district and county (Table 14) and by county, regional water planning group, and river basin (Table 26).
- Ellenburger-San Saba Aquifer – The modeled available groundwater is approximately 14,060 acre-feet per year during the period from 2020 to 2080. Values are summarized by groundwater conservation district and county (Table 15) and by county, regional water planning group, and river basin (Table 27).
- Hickory Aquifer – The modeled available groundwater is approximately 3,580 acre-feet per year during the period from 2020 to 2080. Values are summarized by groundwater conservation district and county (Table 16) and by county, regional water planning group, and river basin (Table 28).

Figures 1 through 7 show the extent of the Trinity Aquifer subunits (Paluxy, Glen Rose, Twin Mountains, Travis Peak, Hensell, Hosston, and Antlers formations, respectively). Figures 8 through 12 show the extent of the Woodbine, Edwards (Balcones Fault Zone), Marble Falls, Ellenburger-San Saba, and Hickory aquifers, respectively. Figure 13 shows the county, groundwater conservation district, regional water planning area, and river basin boundaries represented by the divisions in Tables 5 to 28.

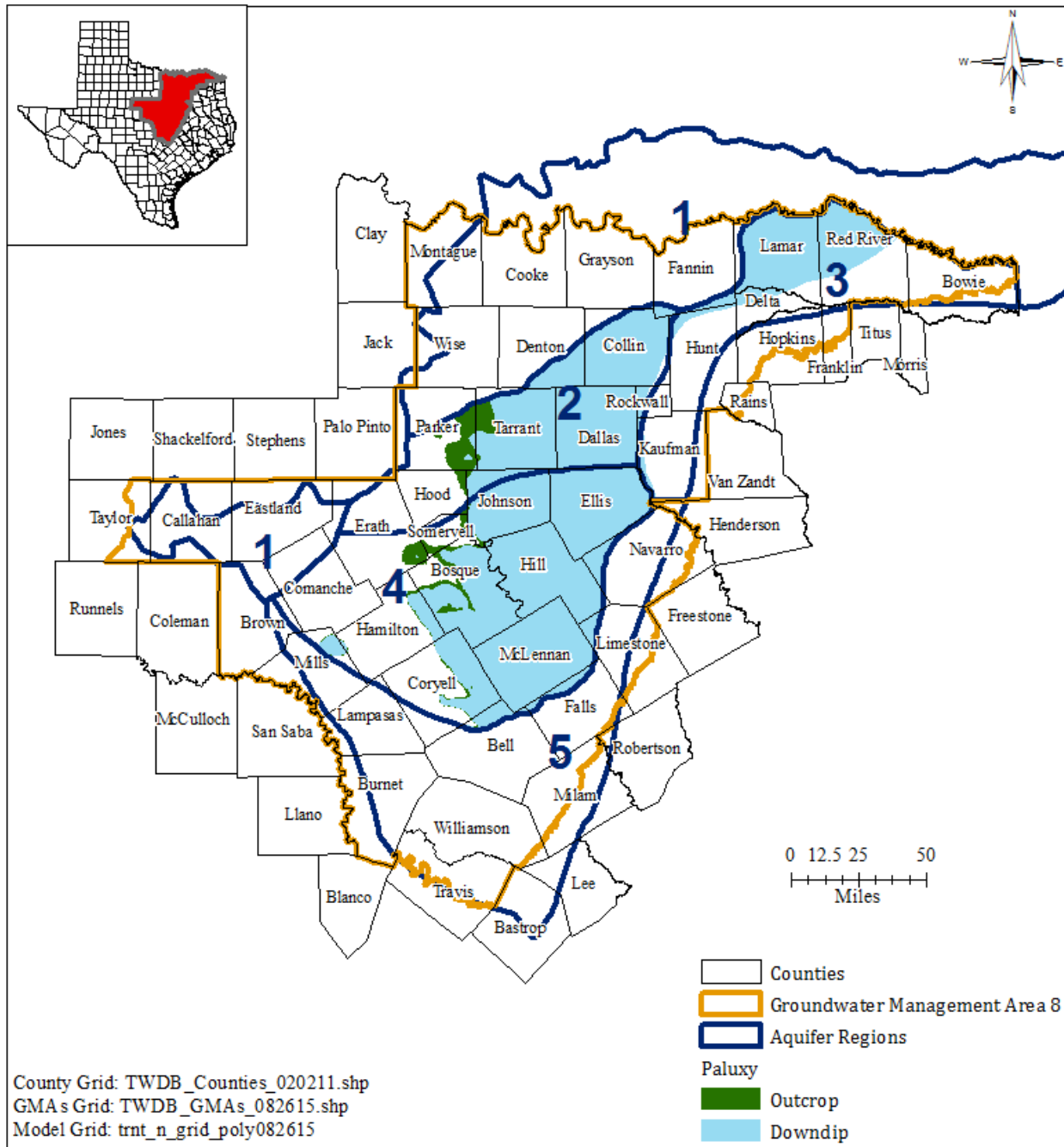


FIGURE 1. MAP SHOWING THE TRINITY AQUIFER (PALUXY) WITHIN GROUNDWATER MANAGEMENT AREA 8 FROM THE GROUNDWATER AVAILABILITY MODEL FOR NORTHERN PORTION OF TRINITY AND WOODBINE AQUIFERS. SEE APPENDIX A FOR AQUIFER REGION DETAILS.

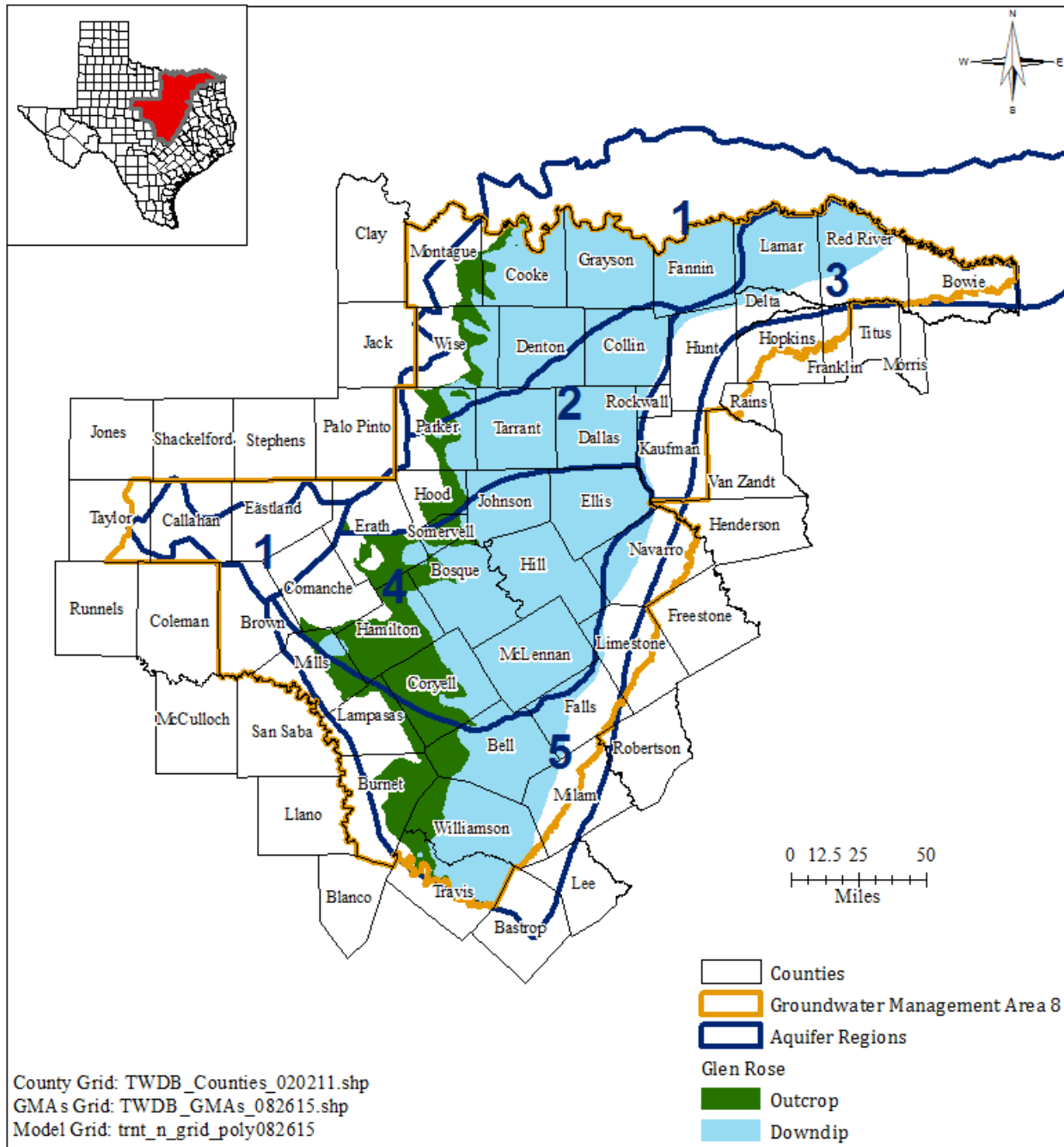


FIGURE 2. MAP SHOWING THE TRINITY AQUIFER (GLEN ROSE) WITHIN GROUNDWATER MANAGEMENT AREA 8 FROM THE GROUNDWATER AVAILABILITY MODEL FOR THE NORTHERN PORTION OF TRINITY AND WOODBINE AQUIFERS. SEE APPENDIX A FOR AQUIFER REGION DETAILS.

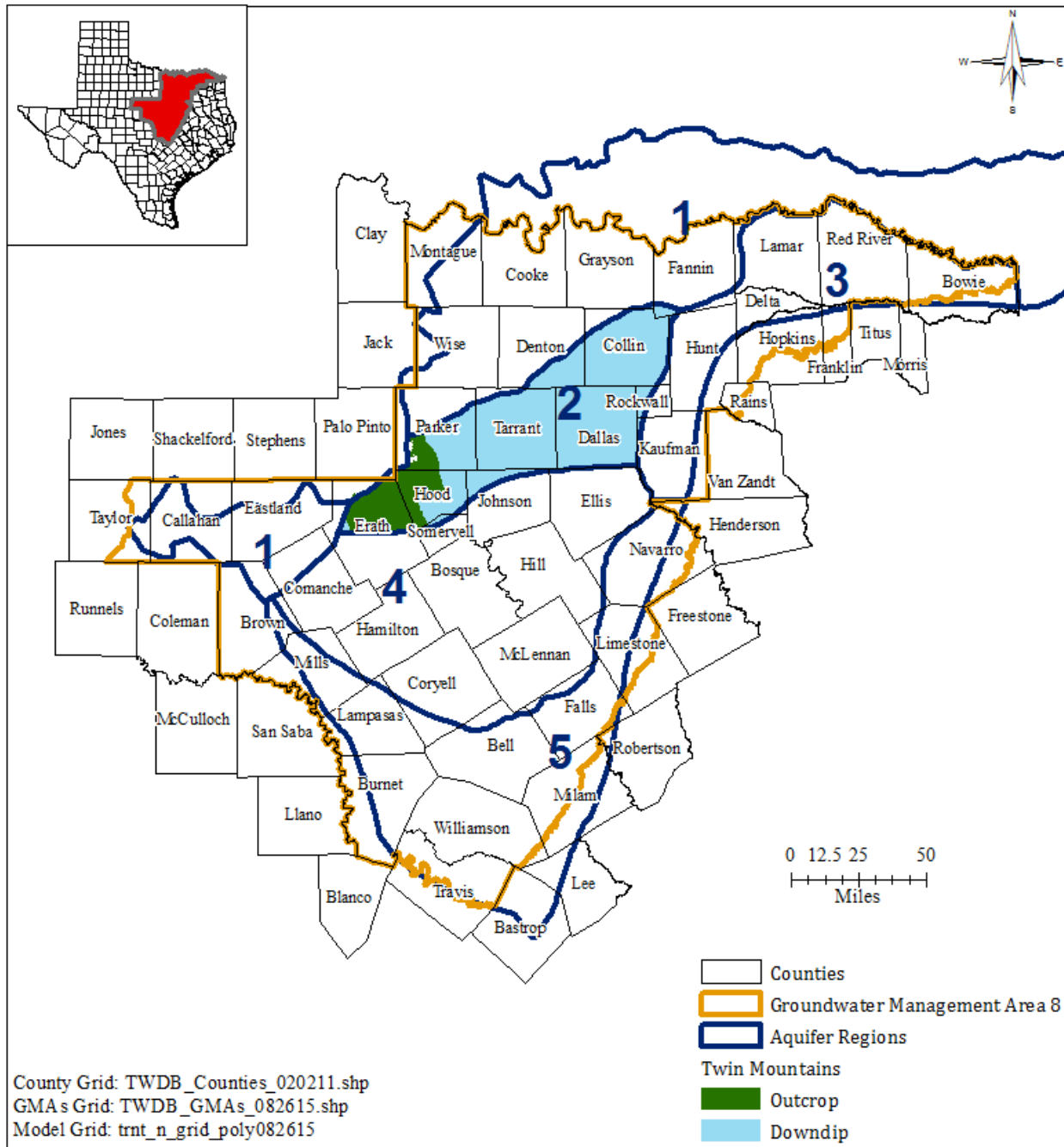


FIGURE 3. MAP SHOWING THE TRINITY AQUIFER (TWIN MOUNTAINS) WITHIN GROUNDWATER MANAGEMENT AREA 8 FROM THE GROUNDWATER AVAILABILITY MODEL FOR THE NORTHERN PORTION OF TRINITY AND WOODBINE AQUIFERS. SEE APPENDIX A FOR AQUIFER REGION DETAILS.

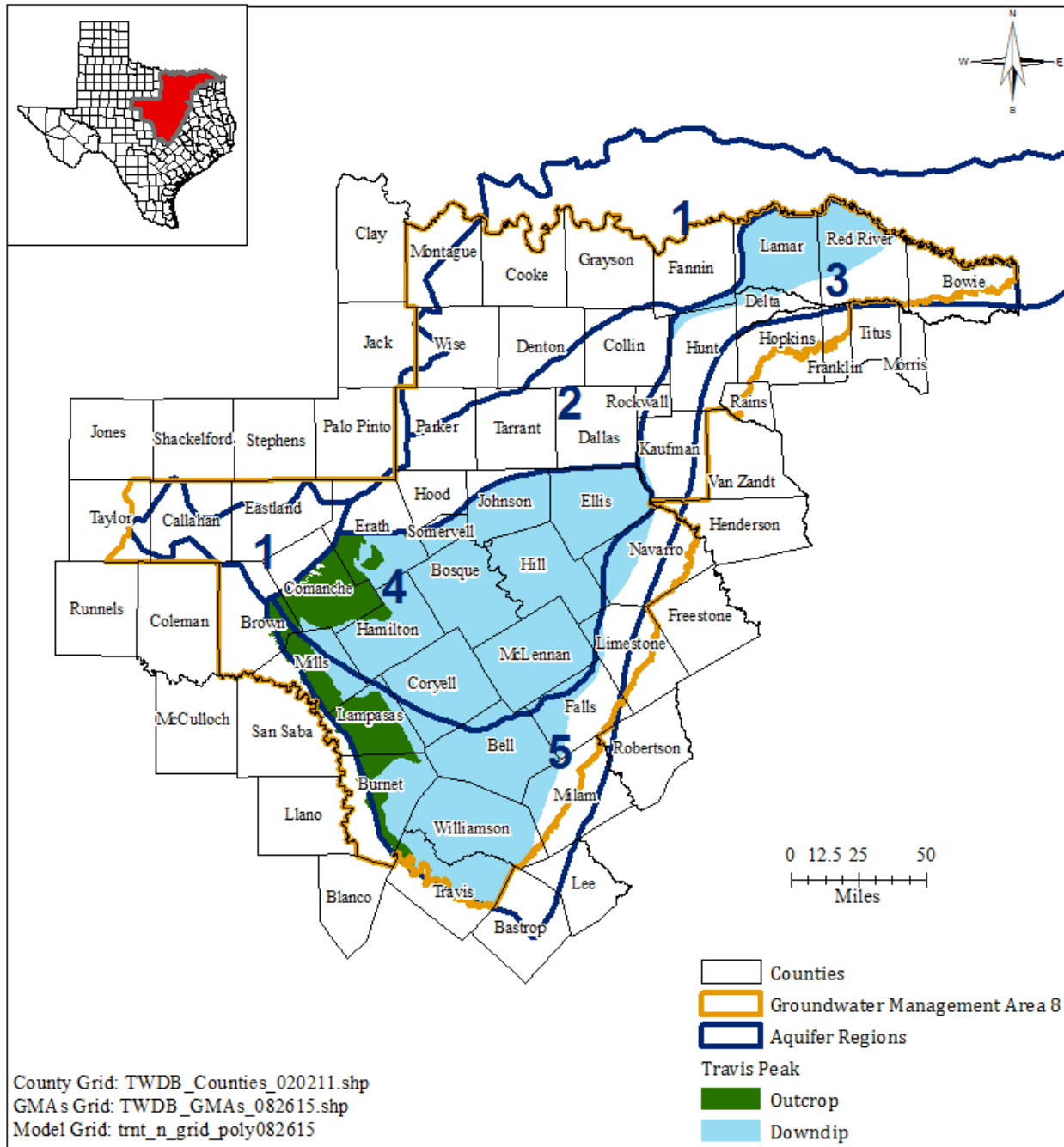


FIGURE 4. MAP SHOWING THE TRINITY AQUIFER (TRAVIS PEAK) WITHIN GROUNDWATER MANAGEMENT AREA 8 FROM THE GROUNDWATER AVAILABILITY MODEL FOR THE NORTHERN PORTION OF TRINITY AND WOODBINE AQUIFERS. SEE APPENDIX A FOR AQUIFER REGION DETAILS.

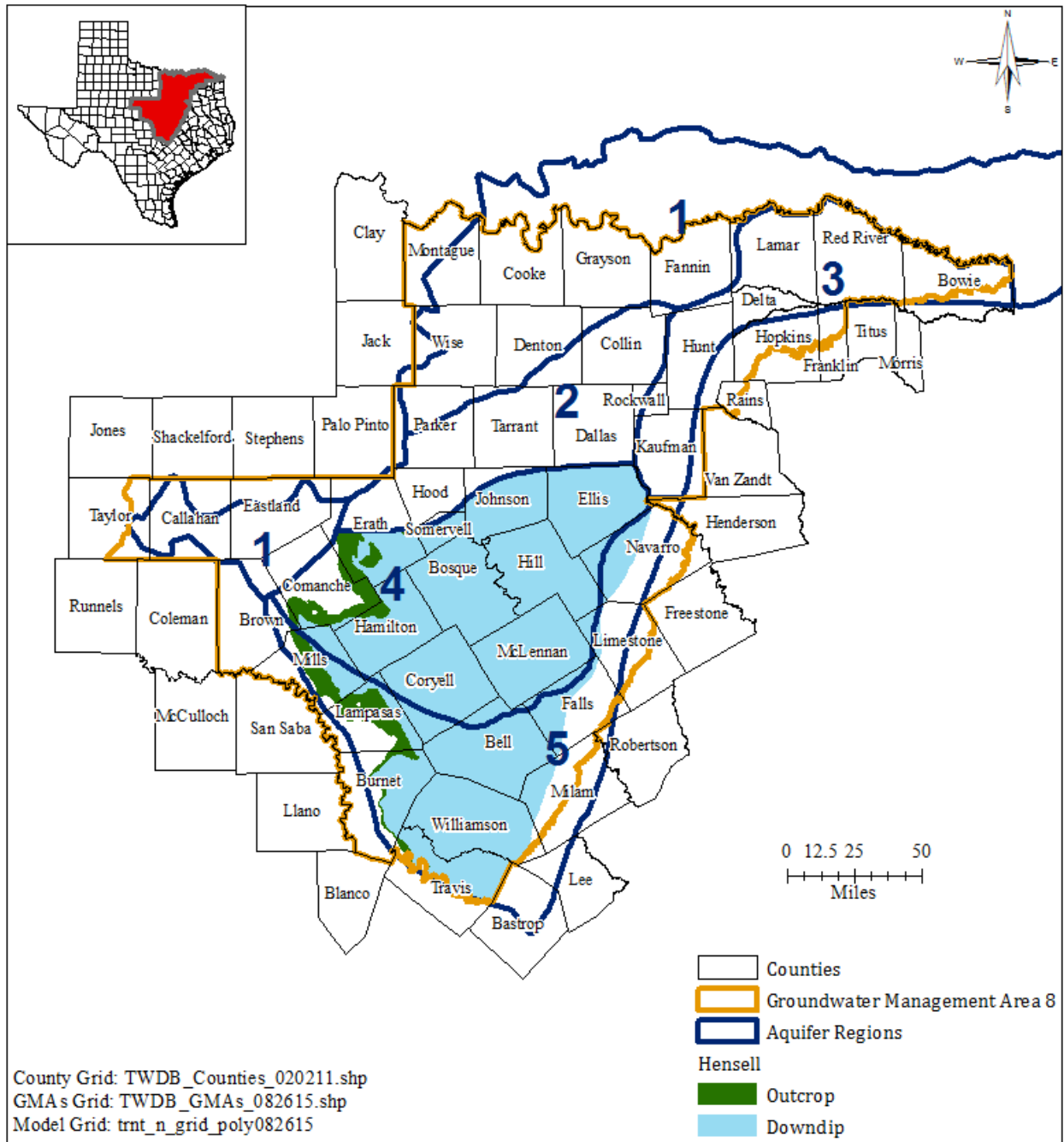


FIGURE 5. MAP SHOWING THE TRINITY AQUIFER (HENSELL) WITHIN GROUNDWATER MANAGEMENT AREA 8 FROM THE GROUNDWATER AVAILABILITY MODEL FOR THE NORTHERN PORTION OF TRINITY AND WOODBINE AQUIFERS. SEE APPENDIX A FOR AQUIFER REGION DETAILS.

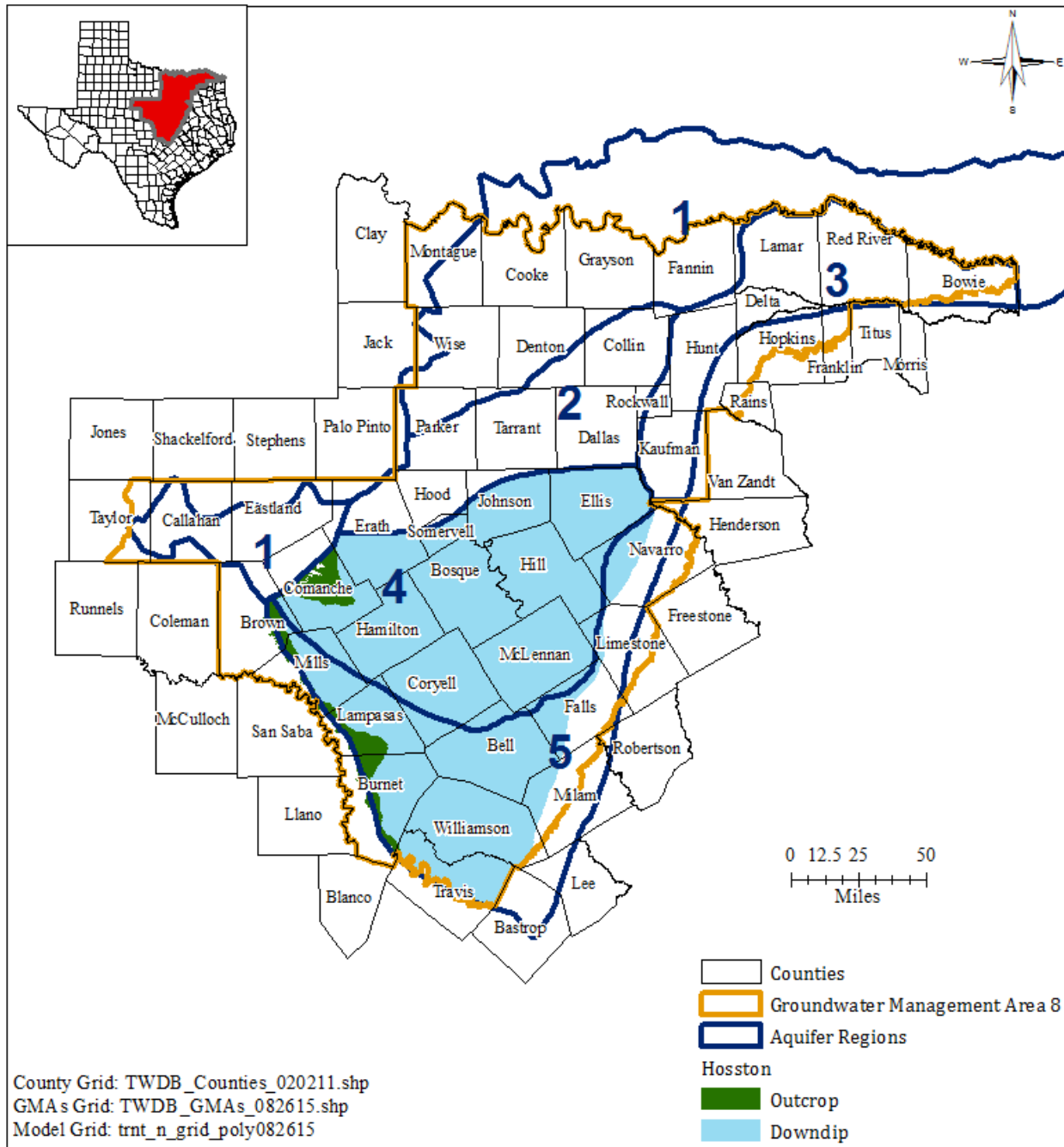


FIGURE 6. MAP SHOWING THE TRINITY AQUIFER (HOSSTON) WITHIN GROUNDWATER MANAGEMENT AREA 8 FROM THE GROUNDWATER AVAILABILITY MODEL FOR NORTHERN PORTION OF THE TRINITY AND WOODBINE AQUIFERS. SEE APPENDIX A FOR AQUIFER REGION DETAILS.

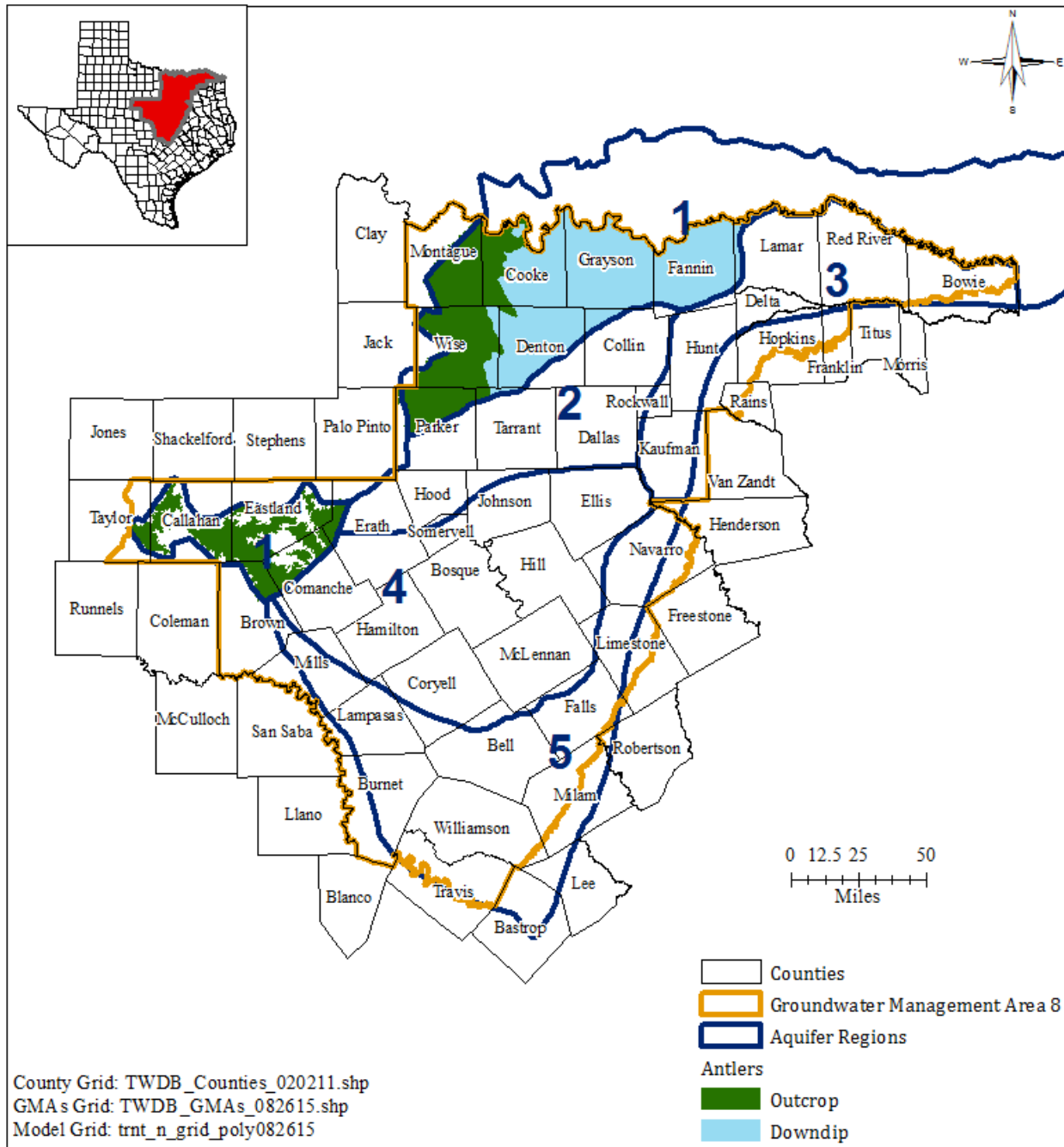


FIGURE 7. MAP SHOWING THE TRINITY AQUIFER (ANTLERS) WITHIN GROUNDWATER MANAGEMENT AREA 8 FROM THE GROUNDWATER AVAILABILITY MODEL FOR THE NORTHERN PORTION OF TRINITY AND WOODBINE AQUIFERS. SEE APPENDIX A FOR AQUIFER REGION DETAILS.

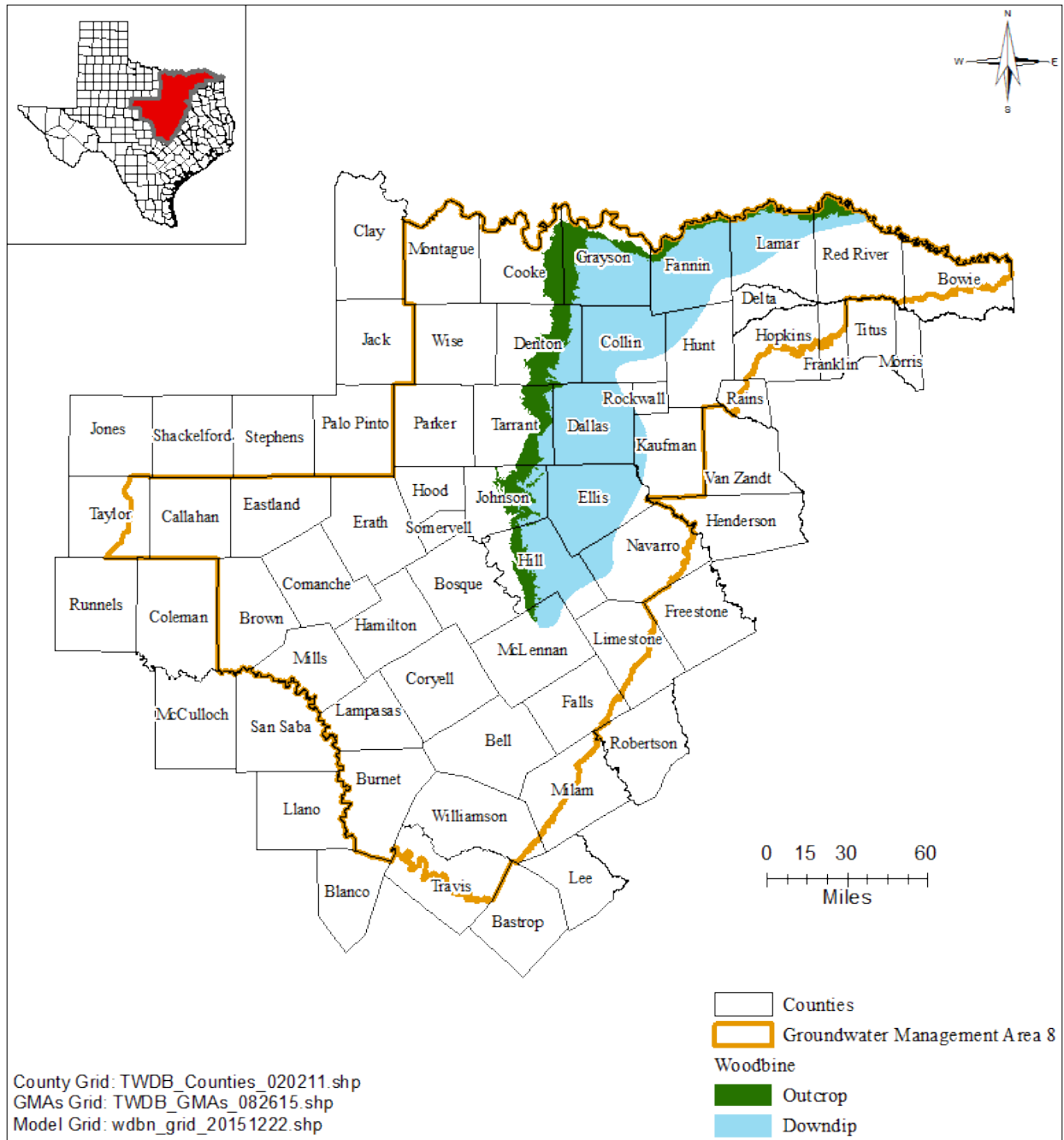


FIGURE 8. MAP SHOWING THE WOODBINE AQUIFER WITHIN GROUNDWATER MANAGEMENT AREA 8 FROM THE GROUNDWATER AVAILABILITY MODEL FOR THE NORTHERN PORTION OF TRINITY AND WOODBINE AQUIFERS.

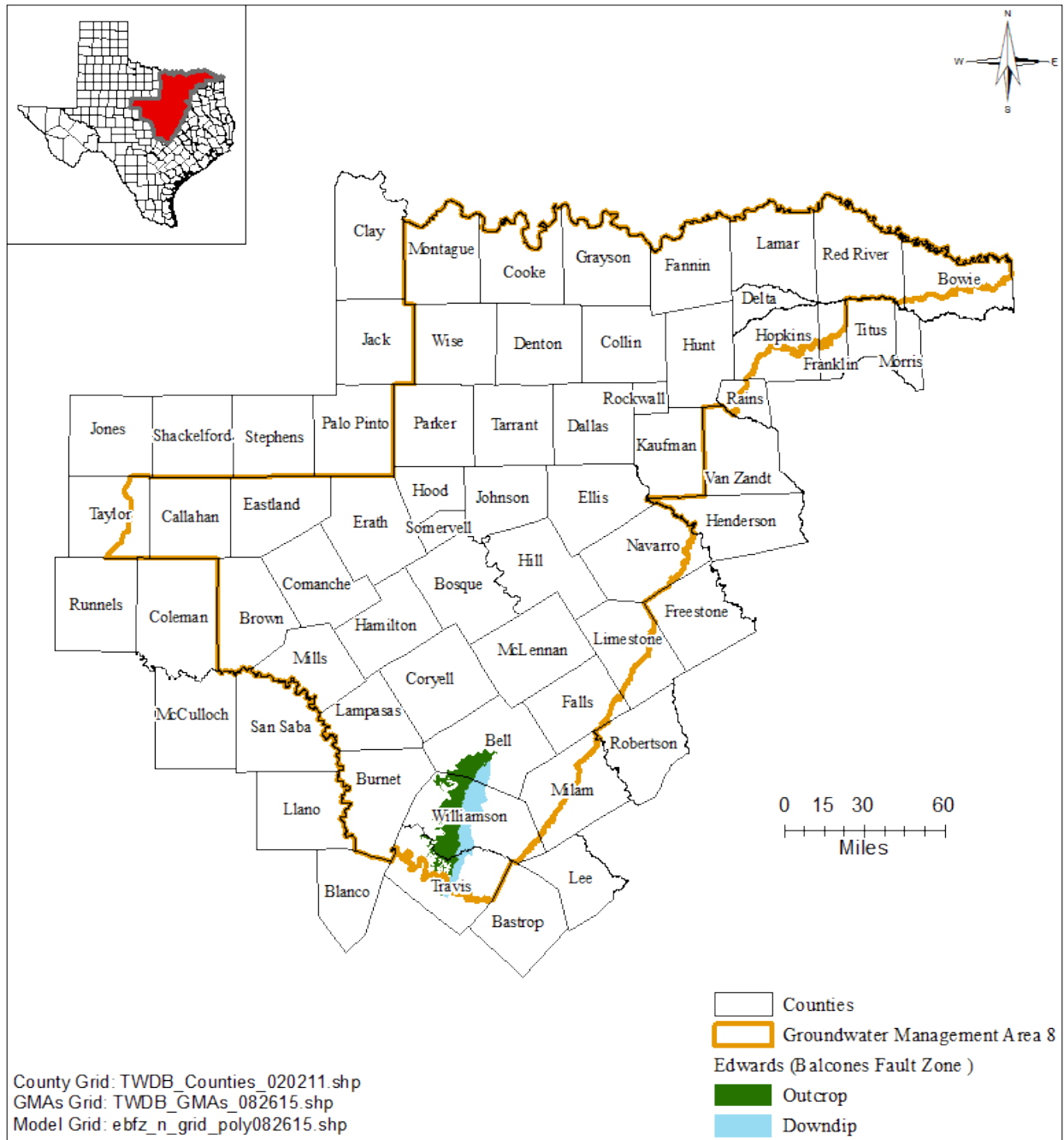


FIGURE 9. MAP SHOWING THE EDWARDS (BALCONES FAULT ZONE) AQUIFER WITHIN GROUNDWATER MANAGEMENT AREA 8 FROM THE GROUNDWATER AVAILABILITY MODEL FOR THE NORTHERN SEGMENT OF EDWARDS (BALCONES FAULT ZONE) AQUIFER.

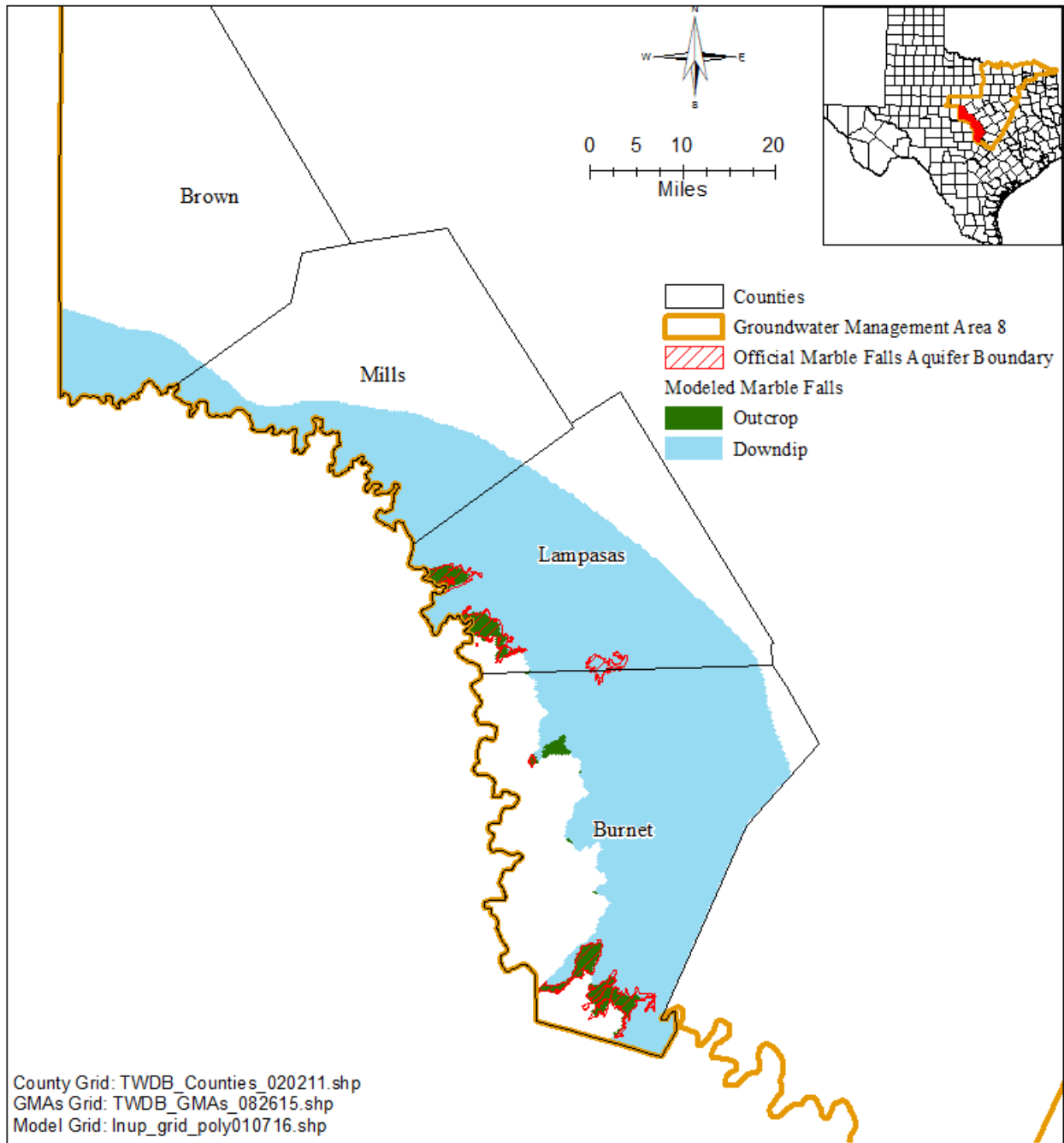


FIGURE 10. MAP SHOWING THE MARBLE FALLS AQUIFER WITHIN GROUNDWATER MANAGEMENT AREA 8 FROM THE GROUNDWATER AVAILABILITY MODEL FOR THE MINOR AQUIFERS IN THE LLANO UPLIFT REGION.

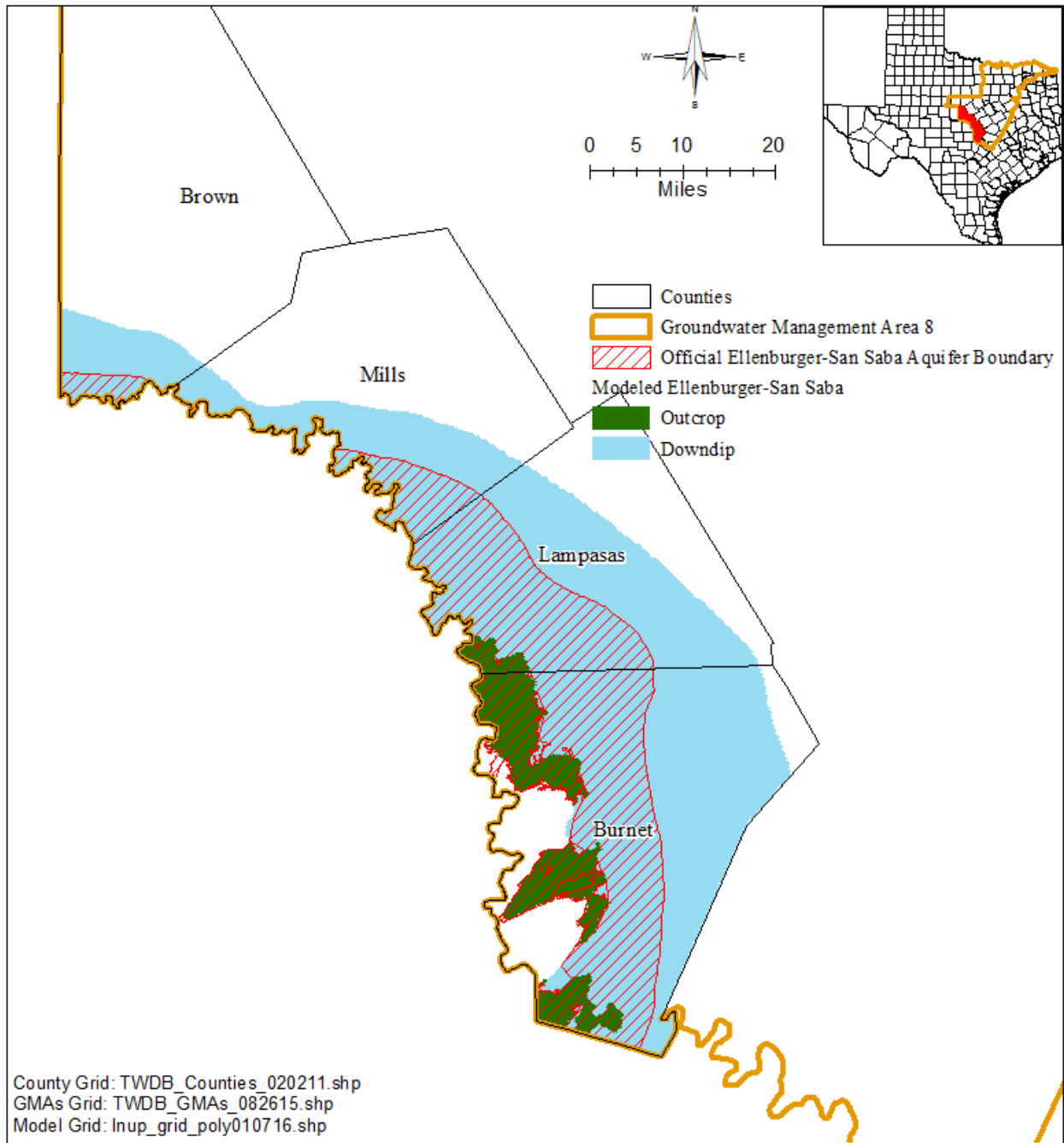


FIGURE 11. MAP SHOWING THE ELLENBURGER-SAN SABA AQUIFER WITHIN GROUNDWATER MANAGEMENT AREA 8 FROM THE GROUNDWATER AVAILABILITY MODEL FOR THE MINOR AQUIFERS IN THE LLANO UPLIFT REGION.

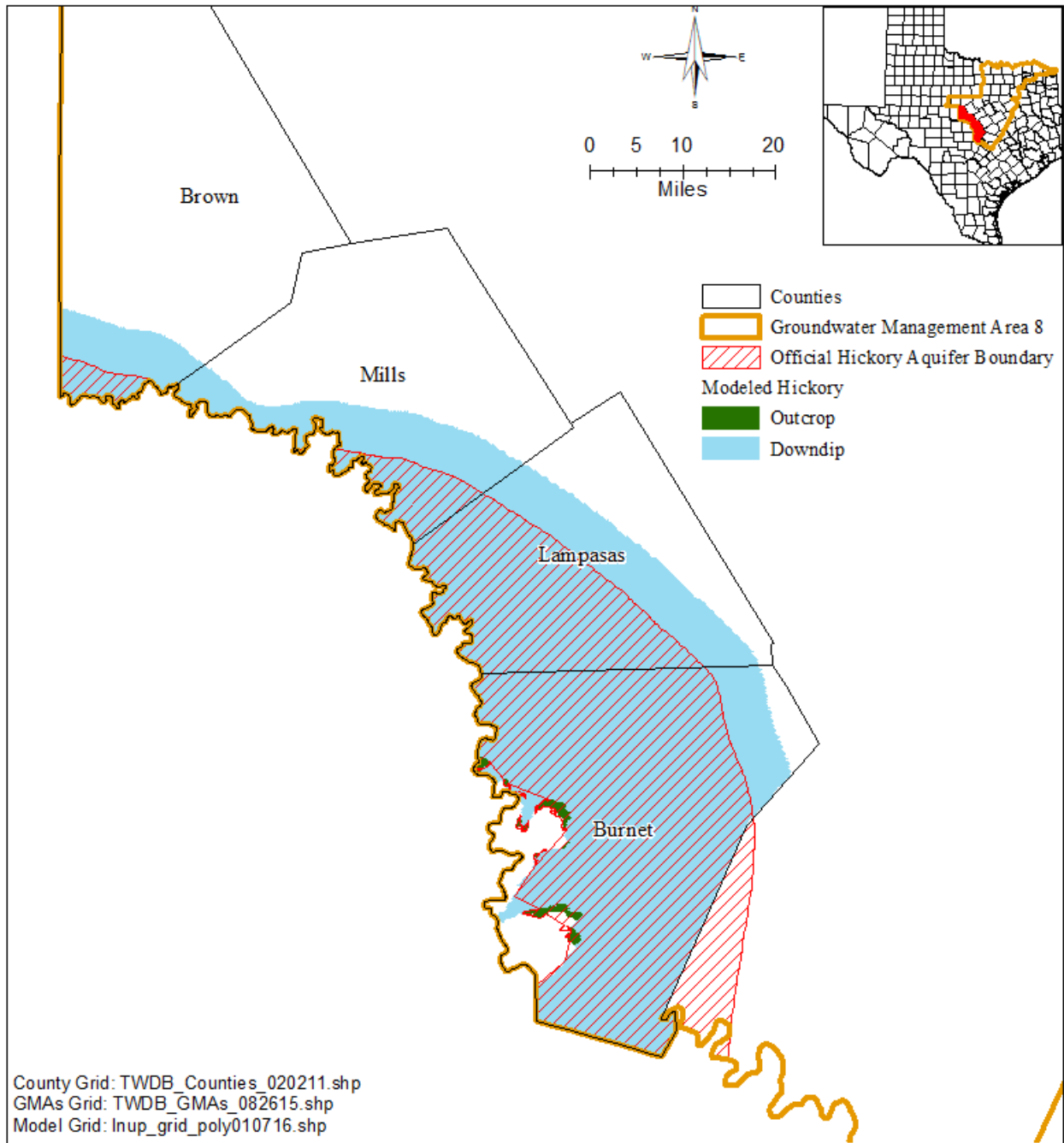


FIGURE 12. MAP SHOWING THE HICKORY AQUIFER WITHIN GROUNDWATER MANAGEMENT AREA 8 FROM THE GROUNDWATER AVAILABILITY MODEL FOR THE MINOR AQUIFERS IN THE LLANO UPLIFT REGION.

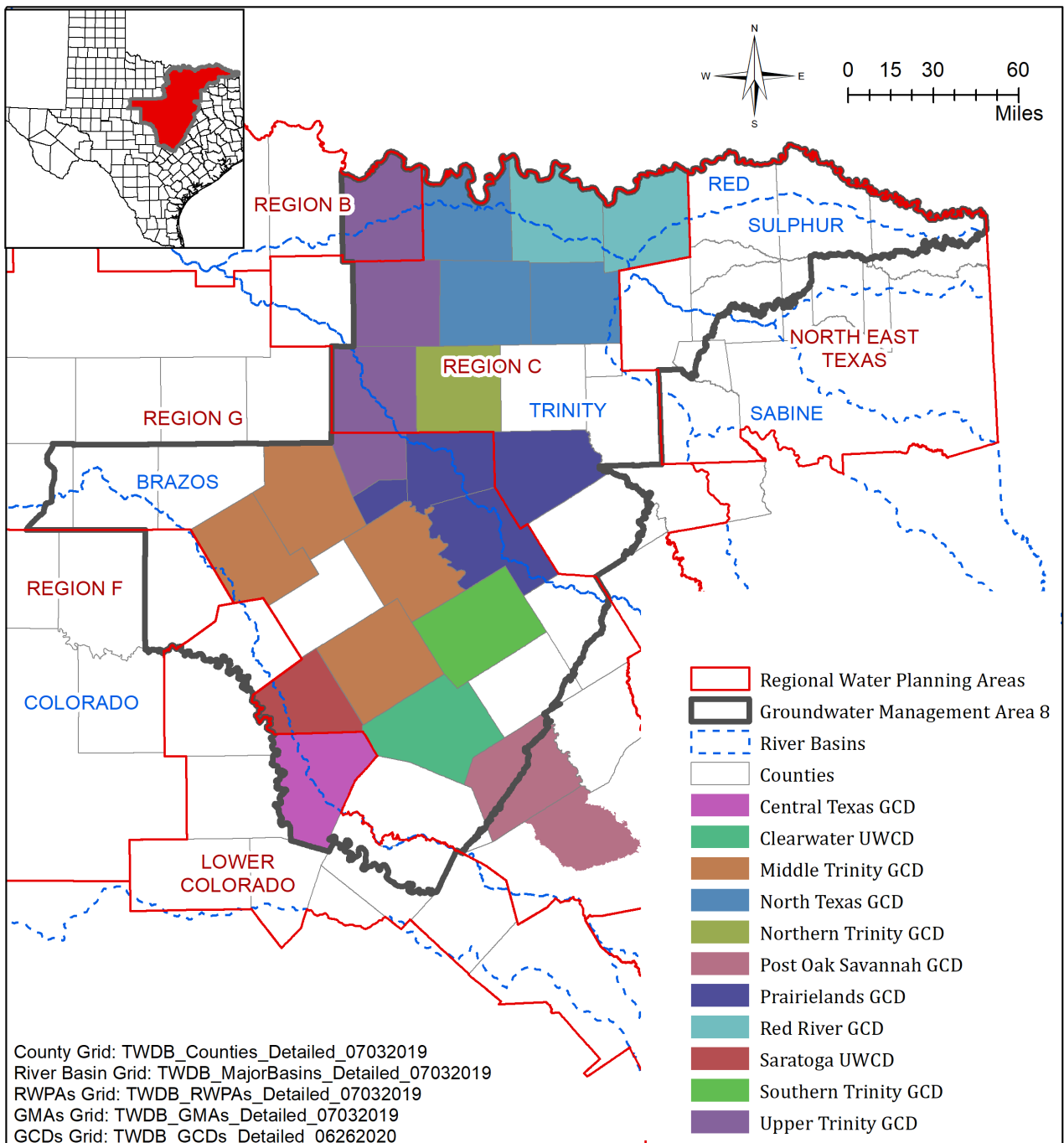


FIGURE 13. MAP SHOWING REGIONAL WATER PLANNING AREAS (RWPAs), GROUNDWATER CONSERVATION DISTRICTS (GCDs), AND RIVER BASINS ASSOCIATED WITH GROUNDWATER MANAGEMENT AREA 8.

TABLE 5 (CONT). MODELED AVAILABLE GROUNDWATER FOR THE TRINITY AQUIFER (PALUXY) IN GROUNDWATER MANAGEMENT AREA (GMA) 8 SUMMARIZED BY GROUNDWATER CONSERVATION DISTRICT (GCD) AND COUNTY FOR EACH DECADE BETWEEN 2020 AND 2080. VALUES ARE IN ACRE-FEET PER YEAR.

GCD	County	Aquifer	2020	2030	2040	2050	2060	2070	2080
Upper Trinity GCD	Hood	Paluxy (outcrop)	159	159	159	159	159	159	159
Upper Trinity GCD	Parker	Paluxy (outcrop)	2,609	2,609	2,609	2,609	2,609	2,609	2,609
Upper Trinity GCD	Parker	Paluxy (downdip)	50	50	50	50	50	50	50
Upper Trinity GCD Total		Paluxy	2,818	2,818	2,818	2,818	2,818	2,818	2,818
No District	Dallas	Paluxy	359	359	359	359	359	359	359
No District	Delta	Paluxy	56	56	56	56	56	56	56
No District	Falls	Paluxy	0	0	0	0	0	0	0
No District	Hamilton	Paluxy	0	0	0	0	0	0	0
No District	Hunt	Paluxy	3	3	3	3	3	3	3
No District	Kaufman	Paluxy	0	0	0	0	0	0	0
No District	Lamar	Paluxy	8	8	8	8	8	8	8
No District	Limestone	Paluxy	0	0	0	0	0	0	0
No District	Mills	Paluxy	6	6	6	6	6	6	6
No District	Navarro	Paluxy	0	0	0	0	0	0	0
No District	Red River	Paluxy	177	177	177	177	177	177	177
No District	Rockwall	Paluxy	0	0	0	0	0	0	0
No District Total		Paluxy	609	609	609	609	609	609	609
GMA 8 Total		Paluxy	24,517	24,517	24,517	24,517	24,517	24,517	24,517

*UWCD: Underground Water Conservation District.

TABLE 6 (CONT). MODELED AVAILABLE GROUNDWATER FOR THE TRINITY AQUIFER (GLEN ROSE) IN GROUNDWATER MANAGEMENT AREA (GMA) 8 SUMMARIZED BY GROUNDWATER CONSERVATION DISTRICT (GCD) AND COUNTY FOR EACH DECADE BETWEEN 2020 AND 2080. VALUES ARE IN ACRE-FEET PER YEAR.

GCD	County	Aquifer	2020	2030	2040	2050	2060	2070	2080
Saratoga UWCD	Lampasas	Glen Rose	68	68	68	68	68	68	68
Saratoga UWCD Total		Glen Rose	68	68	68	68	68	68	68
Southern Trinity GCD	McLennan	Glen Rose	0	0	0	0	0	0	0
Southern Trinity GCD Total		Glen Rose	0	0	0	0	0	0	0
Upper Trinity GCD	Hood	Glen Rose (outcrop)	790	790	790	790	790	790	790
Upper Trinity GCD	Hood	Glen Rose (downdip)	124	124	124	124	124	124	124
Upper Trinity GCD	Parker	Glen Rose (outcrop)	3,685	3,685	3,685	3,685	3,685	3,685	3,685
Upper Trinity GCD	Parker	Glen Rose (downdip)	1,406	1,406	1,406	1,406	1,406	1,406	1,406
Upper Trinity GCD Total			6,005	6,005	6,005	6,005	6,005	6,005	6,005
No District	Brown	Glen Rose	0	0	0	0	0	0	0
No District	Dallas	Glen Rose	131	131	131	131	131	131	131
No District	Delta	Glen Rose	0	0	0	0	0	0	0
No District	Falls	Glen Rose	0	0	0	0	0	0	0
No District	Hamilton	Glen Rose	218	218	218	218	218	218	218
No District	Hunt	Glen Rose	0	0	0	0	0	0	0
No District	Kaufman	Glen Rose	0	0	0	0	0	0	0
No District	Lamar	Glen Rose	0	0	0	0	0	0	0
No District	Limestone	Glen Rose	0	0	0	0	0	0	0
No District	Mills	Glen Rose	189	189	189	189	189	189	189
No District	Navarro	Glen Rose	0	0	0	0	0	0	0
No District	Red River	Glen Rose	0	0	0	0	0	0	0
No District	Rockwall	Glen Rose	0	0	0	0	0	0	0
No District	Travis	Glen Rose	100	100	100	100	100	100	100
No District	Williamson	Glen Rose	149	149	149	149	149	149	149
No District Total		Glen Rose	787	787	787	787	787	787	787
GMA 8 Total		Glen Rose	12,410	12,410	12,410	12,410	12,410	12,410	12,410

*UWCD: Underground Water Conservation District.

TABLE 8 (CONT). MODELED AVAILABLE GROUNDWATER FOR THE TRINITY AQUIFER (TRAVIS PEAK) IN GROUNDWATER MANAGEMENT AREA (GMA) 8 SUMMARIZED BY GROUNDWATER CONSERVATION DISTRICT (GCD) AND COUNTY FOR EACH DECADE BETWEEN 2020 AND 2080. VALUES ARE IN ACRE-FEET PER YEAR.

GCD	County	Aquifer	2020	2030	2040	2050	2060	2070	2080
No District	Brown	Travis Peak	384	384	384	384	384	384	384
No District	Dallas	Travis Peak	0	0	0	0	0	0	0
No District	Delta	Travis Peak	0	0	0	0	0	0	0
No District	Falls	Travis Peak	1,435	1,435	1,435	1,435	1,435	1,435	1,435
No District	Hamilton	Travis Peak	2,209	2,209	2,209	2,209	2,209	2,209	2,209
No District	Hunt	Travis Peak	0	0	0	0	0	0	0
No District	Kaufman	Travis Peak	0	0	0	0	0	0	0
No District	Lamar	Travis Peak	0	0	0	0	0	0	0
No District	Limestone	Travis Peak	0	0	0	0	0	0	0
No District	Mills	Travis Peak	2,264	2,264	2,264	2,264	2,264	2,264	2,264
No District	Navarro	Travis Peak	0	0	0	0	0	0	0
No District	Red River	Travis Peak	0	0	0	0	0	0	0
No District	Travis	Travis Peak	6,644	6,644	6,644	6,644	6,644	6,644	6,644
No District	Williamson	Travis Peak	3,548	3,548	3,548	3,548	3,548	3,548	3,548
No District Total		Travis Peak	16,484	16,484	16,484	16,484	16,484	16,484	16,484
GMA 8 Total		Travis Peak	98,231	98,231	98,231	98,231	98,231	98,231	98,231

¹UWCD: Underground Water Conservation District.

²Splits for Upper Trinity GCD are presented since they are included in the GMA 8-wide desired future conditions.

TABLE 9 (CONT). MODELED AVAILABLE GROUNDWATER FOR THE TRINITY AQUIFER (HENSELL) IN GROUNDWATER MANAGEMENT AREA (GMA) 8 SUMMARIZED BY GROUNDWATER CONSERVATION DISTRICT (GCD) AND COUNTY FOR EACH DECADE BETWEEN 2020 AND 2080. VALUES ARE IN ACRE-FEET PER YEAR.

GCD	County	Aquifer	2020	2030	2040	2050	2060	2070	2080
No District	Brown	Hensell	4	4	4	4	4	4	4
No District	Dallas	Hensell	0	0	0	0	0	0	0
No District	Falls	Hensell	0	0	0	0	0	0	0
No District	Hamilton	Hensell	1,672	1,672	1,672	1,672	1,672	1,672	1,672
No District	Kaufman	Hensell	0	0	0	0	0	0	0
No District	Limestone	Hensell	0	0	0	0	0	0	0
No District	Mills	Hensell	607	607	607	607	607	607	607
No District	Navarro	Hensell	0	0	0	0	0	0	0
No District	Travis	Hensell	2,269	2,269	2,269	2,269	2,269	2,269	2,269
No District	Williamson	Hensell	1,599	1,599	1,599	1,599	1,599	1,599	1,599
No District Total		Hensell	6,151	6,151	6,151	6,151	6,151	6,151	6,151
GMA 8 Total		Hensell	27,117	27,117	27,117	27,117	27,117	27,117	27,117

¹UWCD: Underground Water Conservation District.

²Splits for Upper Trinity GCD are presented since they are included in the GMA 8-wide desired future conditions.

*Note that the Hensell values in this table represent a portion of the total Travis Peak values already provided in Table 8 and do not represent an additional source of water.

TABLE 10 (CONT). MODELED AVAILABLE GROUNDWATER FOR THE TRINITY AQUIFER (HOSSTON) IN GROUNDWATER MANAGEMENT AREA (GMA) 8 SUMMARIZED BY GROUNDWATER CONSERVATION DISTRICT (GCD) AND COUNTY FOR EACH DECADE BETWEEN 2020 AND 2080. VALUES ARE IN ACRE-FEET PER YEAR.

GCD	County	Aquifer	2020	2030	2040	2050	2060	2070	2080
No District	Brown	Hosston	346	346	346	346	346	346	346
No District	Dallas	Hosston	0	0	0	0	0	0	0
No District	Falls	Hosston	1,435	1,435	1,435	1,435	1,435	1,435	1,435
No District	Hamilton	Hosston	385	385	385	385	385	385	385
No District	Kaufman	Hosston	0	0	0	0	0	0	0
No District	Limestone	Hosston	0	0	0	0	0	0	0
No District	Mills	Hosston	1,455	1,455	1,455	1,455	1,455	1,455	1,455
No District	Navarro	Hosston	0	0	0	0	0	0	0
No District	Travis	Hosston	4,185	4,185	4,185	4,185	4,185	4,185	4,185
No District	Williamson	Hosston	1,750	1,750	1,750	1,750	1,750	1,750	1,750
No District Total		Hosston	9,556	9,556	9,556	9,556	9,556	9,556	9,556
GMA 8 Total		Hosston	67,728	67,728	67,728	67,728	67,728	67,728	67,728

¹UWCD: Underground Water Conservation District.

²Splits for Upper Trinity GCD are presented since they are included in the GMA 8-wide desired future conditions.

*Note that the Hosston values in this table represent a portion of the total Travis Peak values already provided in Table 8 and do not represent an additional source of water.

TABLE 13. MODELED AVAILABLE GROUNDWATER FOR THE EDWARDS (BALCONES FAULT ZONE) AQUIFER IN GROUNDWATER MANAGEMENT AREA (GMA) 8 SUMMARIZED BY GROUNDWATER CONSERVATION DISTRICT (GCD) AND COUNTY FOR EACH DECADE BETWEEN 2020 AND 2080. VALUES ARE IN ACRE-FEET PER YEAR.

GCD	County	Aquifer	2020	2030	2040	2050	2060	2070	2080
Clearwater UWCD*	Bell	Edwards (Balcones Fault Zone)	6,469	6,469	6,469	6,469	6,469	6,469	6,469
Clearwater UWCD Total		Edwards (Balcones Fault Zone)	6,469	6,469	6,469	6,469	6,469	6,469	6,469
No District	Travis	Edwards (Balcones Fault Zone)	5,237	5,237	5,237	5,237	5,237	5,237	5,237
No District	Williamson	Edwards (Balcones Fault Zone)	3,462	3,462	3,462	3,462	3,462	3,462	3,462
No District Total		Edwards (Balcones Fault Zone)	8,699	8,699	8,699	8,699	8,699	8,699	8,699
GMA 8 Total		Edwards (Balcones Fault Zone)	15,168	15,168	15,168	15,168	15,168	15,168	15,168

*UWCD: Underground Water Conservation District.

TABLE 14. MODELED AVAILABLE GROUNDWATER FOR THE MARBLE FALLS AQUIFER IN GROUNDWATER MANAGEMENT AREA (GMA) 8 SUMMARIZED BY GROUNDWATER CONSERVATION DISTRICT (GCD) AND COUNTY FOR EACH DECADE BETWEEN 2020 AND 2080. VALUES ARE IN ACRE-FEET PER YEAR.

GCD	County	Aquifer	2020	2030	2040	2050	2060	2070	2080
Central Texas GCD	Burnet	Marble Falls	2,738	2,738	2,738	2,738	2,738	2,738	2,738
Central Texas GCD Total		Marble Falls	2,738	2,738	2,738	2,738	2,738	2,738	2,738
Saratoga UWCD*	Lampasas	Marble Falls	2,839	2,839	2,839	2,839	2,839	2,839	2,839
Saratoga UWCD Total		Marble Falls	2,839	2,839	2,839	2,839	2,839	2,839	2,839
No District	Brown	Marble Falls	25	25	25	25	25	25	25
No District	Mills	Marble Falls	25	25	25	25	25	25	25
No District Total		Marble Falls	50	50	50	50	50	50	50
GMA 8 Total		Marble Falls	5,627	5,627	5,627	5,627	5,627	5,627	5,627

*UWCD: Underground Water Conservation District.

TABLE 15. MODELED AVAILABLE GROUNDWATER FOR ELLENBURGER-SAN SABA AQUIFER IN GROUNDWATER MANAGEMENT AREA (GMA) 8 SUMMARIZED BY GROUNDWATER CONSERVATION DISTRICT (GCD) AND COUNTY FOR EACH DECADE BETWEEN 2020 AND 2080. VALUES ARE IN ACRE-FEET PER YEAR.

GCD	County	Aquifer	2020	2030	2040	2050	2060	2070	2080
Central Texas GCD	Burnet	Ellenburger-San Saba	10,835	10,835	10,835	10,835	10,835	10,835	10,835
Central Texas GCD Total		Ellenburger-San Saba	10,835	10,835	10,835	10,835	10,835	10,835	10,835
Saratoga UWCD*	Lampasas	Ellenburger-San Saba	2,595	2,595	2,595	2,595	2,595	2,595	2,595
Saratoga UWCD Total		Ellenburger-San Saba	2,595	2,595	2,595	2,595	2,595	2,595	2,595
No District	Brown	Ellenburger-San Saba	131	131	131	131	131	131	131
No District	Mills	Ellenburger-San Saba	499	499	499	499	499	499	499
No District Total		Ellenburger-San Saba	630	630	630	630	630	630	630
GMA 8 Total		Ellenburger-San Saba	14,060	14,060	14,060	14,060	14,060	14,060	14,060

*UWCD: Underground Water Conservation District.

TABLE 16. MODELED AVAILABLE GROUNDWATER FOR THE HICKORY AQUIFER IN GROUNDWATER MANAGEMENT AREA (GMA) 8 SUMMARIZED BY GROUNDWATER CONSERVATION DISTRICT (GCD) AND COUNTY FOR EACH DECADE BETWEEN 2020 AND 2080. VALUES ARE IN ACRE-FEET PER YEAR.

GCD	County	Aquifer	2020	2030	2040	2050	2060	2070	2080
Central Texas GCD	Burnet	Hickory	3,415	3,415	3,415	3,415	3,415	3,415	3,415
Central Texas GCD Total		Hickory	3,415	3,415	3,415	3,415	3,415	3,415	3,415
Saratoga UWCD*	Lampasas	Hickory	113	113	113	113	113	113	113
Saratoga UWCD Total		Hickory	113	113	113	113	113	113	113
No District	Brown	Hickory	12	12	12	12	12	12	12
No District	Mills	Hickory	36	36	36	36	36	36	36
No District Total		Hickory	48	48	48	48	48	48	48
GMA 8 Total		Hickory	3,576	3,576	3,576	3,576	3,576	3,576	3,576

*UWCD: Underground Water Conservation District.

TABLE 18. MODELED AVAILABLE GROUNDWATER BY DECADE FOR THE TRINITY AQUIFER (GLEN ROSE) IN GROUNDWATER MANAGEMENT AREA (GMA) 8. RESULTS ARE IN ACRE-FEET PER YEAR AND ARE SUMMARIZED BY COUNTY, REGIONAL WATER PLANNING AREA (RWPA), AND RIVER BASIN.

County	RWPA	River Basin	Aquifer	2030	2040	2050	2060	2070	2080
Counties Not in Upper Trinity GCD									
Bell	G	Brazos	Glen Rose	275	275	275	275	275	275
Bosque	G	Brazos	Glen Rose	729	729	729	729	729	729
Brown	F	Colorado	Glen Rose	0	0	0	0	0	0
Burnet	K	Brazos	Glen Rose	66	66	66	66	66	66
Burnet	K	Colorado	Glen Rose	82	82	82	82	82	82
Collin	C	Sabine	Glen Rose	0	0	0	0	0	0
Collin	C	Trinity	Glen Rose	83	83	83	83	83	83
Comanche	G	Brazos	Glen Rose	22	22	22	22	22	22
Comanche	G	Colorado	Glen Rose	18	18	18	18	18	18
Coryell	G	Brazos	Glen Rose	120	120	120	120	120	120
Dallas	C	Trinity	Glen Rose	131	131	131	131	131	131
Delta	D	Sulphur	Glen Rose	0	0	0	0	0	0
Denton	C	Trinity	Glen Rose	339	339	339	339	339	339
Ellis	C	Trinity	Glen Rose	50	50	50	50	50	50
Erath	G	Brazos	Glen Rose	1,078	1,078	1,078	1,078	1,078	1,078
Falls	G	Brazos	Glen Rose	0	0	0	0	0	0
Fannin	C	Sulphur	Glen Rose	0	0	0	0	0	0
Fannin	C	Trinity	Glen Rose	0	0	0	0	0	0
Grayson	C	Trinity	Glen Rose	0	0	0	0	0	0
Hamilton	G	Brazos	Glen Rose	218	218	218	218	218	218
Hill	G	Brazos	Glen Rose	114	114	114	114	114	114
Hill	G	Trinity	Glen Rose	1	1	1	1	1	1
Hunt	D	Sabine	Glen Rose	0	0	0	0	0	0
Hunt	D	Sulphur	Glen Rose	0	0	0	0	0	0
Hunt	D	Trinity	Glen Rose	0	0	0	0	0	0
Johnson	G	Brazos	Glen Rose	951	951	951	951	951	951
Johnson	G	Trinity	Glen Rose	682	682	682	682	682	682
Kaufman	C	Trinity	Glen Rose	0	0	0	0	0	0
Lamar	D	Red	Glen Rose	0	0	0	0	0	0
Lamar	D	Sulphur	Glen Rose	0	0	0	0	0	0
Lampasas	G	Brazos	Glen Rose	68	68	68	68	68	68
Limestone	G	Brazos	Glen Rose	0	0	0	0	0	0
Limestone	G	Trinity	Glen Rose	0	0	0	0	0	0
McLennan	G	Brazos	Glen Rose	0	0	0	0	0	0
Milam	G	Brazos	Glen Rose	0	0	0	0	0	0
Mills	K	Brazos	Glen Rose	96	96	96	96	96	96
Mills	K	Colorado	Glen Rose	93	93	93	93	93	93
Navarro	C	Trinity	Glen Rose	0	0	0	0	0	0
Red River	D	Red	Glen Rose	0	0	0	0	0	0

TABLE 20. MODELED AVAILABLE GROUNDWATER BY DECADE FOR THE TRINITY AQUIFER (TRAVIS PEAK) IN GROUNDWATER MANAGEMENT AREA (GMA) 8. RESULTS ARE IN ACRE-FEET PER YEAR AND ARE SUMMARIZED BY COUNTY, REGIONAL WATER PLANNING AREA (RWPA), AND RIVER BASIN.

County	RWPA	River Basin	Aquifer	2030	2040	2050	2060	2070	2080
Counties Not in Upper Trinity GCD									
Bell	G	Brazos	Travis Peak	9,000	9,000	9,000	9,000	9,000	9,000
Bosque	G	Brazos	Travis Peak	7,683	7,683	7,683	7,683	7,683	7,683
Brown	F	Brazos	Travis Peak	3	3	3	3	3	3
Brown	F	Colorado	Travis Peak	381	381	381	381	381	381
Burnet	K	Brazos	Travis Peak	3,297	3,297	3,297	3,297	3,297	3,297
Burnet	K	Colorado	Travis Peak	445	445	445	445	445	445
Comanche	G	Brazos	Travis Peak	6,115	6,115	6,115	6,115	6,115	6,115
Comanche	G	Colorado	Travis Peak	49	49	49	49	49	49
Coryell	G	Brazos	Travis Peak	4,374	4,374	4,374	4,374	4,374	4,374
Dallas	C	Trinity	Travis Peak	0	0	0	0	0	0
Delta	D	Sulphur	Travis Peak	0	0	0	0	0	0
Ellis	C	Trinity	Travis Peak	5,676	5,676	5,676	5,676	5,676	5,676
Erath	G	Brazos	Travis Peak	11,824	11,824	11,824	11,824	11,824	11,824
Falls	G	Brazos	Travis Peak	1,435	1,435	1,435	1,435	1,435	1,435
Fannin	C	Sulphur	Travis Peak	0	0	0	0	0	0
Fannin	C	Trinity	Travis Peak	0	0	0	0	0	0
Hamilton	G	Brazos	Travis Peak	2,209	2,209	2,209	2,209	2,209	2,209
Hill	G	Brazos	Travis Peak	4,404	4,404	4,404	4,404	4,404	4,404
Hill	G	Trinity	Travis Peak	281	281	281	281	281	281
Hunt	D	Sabine	Travis Peak	0	0	0	0	0	0
Hunt	D	Sulphur	Travis Peak	0	0	0	0	0	0
Hunt	D	Trinity	Travis Peak	0	0	0	0	0	0

TABLE 20 (CONT). MODELED AVAILABLE GROUNDWATER BY DECADE FOR THE TRINITY AQUIFER (TRAVIS PEAK) IN GROUNDWATER MANAGEMENT AREA (GMA) 8. RESULTS ARE IN ACRE-FEET PER YEAR AND ARE SUMMARIZED BY COUNTY, REGIONAL WATER PLANNING AREA (RWPA), AND RIVER BASIN.

County	RWPA	River Basin	Aquifer	2030	2040	2050	2060	2070	2080
Johnson	G	Brazos	Travis Peak	1,581	1,581	1,581	1,581	1,581	1,581
Johnson	G	Trinity	Travis Peak	2,891	2,891	2,891	2,891	2,891	2,891
Kaufman	C	Trinity	Travis Peak	0	0	0	0	0	0
Lamar	D	Red	Travis Peak	0	0	0	0	0	0
Lamar	D	Sulphur	Travis Peak	0	0	0	0	0	0
Lampasas	G	Brazos	Travis Peak	1,525	1,525	1,525	1,525	1,525	1,525
Lampasas	G	Colorado	Travis Peak	68	68	68	68	68	68
Limestone	G	Brazos	Travis Peak	0	0	0	0	0	0
Limestone	G	Trinity	Travis Peak	0	0	0	0	0	0
McLennan	G	Brazos	Travis Peak	20,649	20,649	20,649	20,649	20,649	20,649
Milam	G	Brazos	Travis Peak	0	0	0	0	0	0
Mills	K	Brazos	Travis Peak	704	704	704	704	704	704
Mills	K	Colorado	Travis Peak	1,560	1,560	1,560	1,560	1,560	1,560
Navarro	C	Trinity	Travis Peak	0	0	0	0	0	0
Red River	D	Red	Travis Peak	0	0	0	0	0	0
Red River	D	Sulphur	Travis Peak	0	0	0	0	0	0
Somervell	G	Brazos	Travis Peak	1,763	1,763	1,763	1,763	1,763	1,763
Travis	K	Brazos	Travis Peak	1	1	1	1	1	1
Travis	K	Colorado	Travis Peak	6,642	6,642	6,642	6,642	6,642	6,642
Williamson	G	Brazos	Travis Peak	3,543	3,543	3,543	3,543	3,543	3,543
Williamson	G	Colorado	Travis Peak	5	5	5	5	5	5
Williamson	K	Brazos	Travis Peak	0	0	0	0	0	0

TABLE 20 (CONT). MODELED AVAILABLE GROUNDWATER BY DECADE FOR THE TRINITY AQUIFER (TRAVIS PEAK) IN GROUNDWATER MANAGEMENT AREA (GMA) 8. RESULTS ARE IN ACRE-FEET PER YEAR AND ARE SUMMARIZED BY COUNTY, REGIONAL WATER PLANNING AREA (RWPA), AND RIVER BASIN.

County	RWPA	River Basin	Aquifer	2030	2040	2050	2060	2070	2080
Williamson	K	Colorado	Travis Peak	0	0	0	0	0	0
Subtotal			Travis Peak	98,108	98,108	98,108	98,108	98,108	98,108
Counties in Upper Trinity GCD¹									
Hood	G	Brazos	Travis Peak	122	122	122	122	122	122
Subtotal			Travis Peak	122	122	122	122	122	122
GMA 8 Total			Travis Peak	98,230	98,230	98,230	98,230	98,230	98,230

¹Splits for Upper Trinity GCD are presented since they are included in the GMA 8-wide desired future conditions.

TABLE 22 (CONT). MODELED AVAILABLE GROUNDWATER BY DECADE FOR THE TRINITY AQUIFER (HOSSTON) IN GROUNDWATER MANAGEMENT AREA (GMA) 8. RESULTS ARE IN ACRE-FEET PER YEAR AND ARE SUMMARIZED BY COUNTY, REGIONAL WATER PLANNING AREA (RWPA), AND RIVER BASIN.

County	RWPA	River Basin	Aquifer	2030	2040	2050	2060	2070	2080
Navarro	C	Trinity	Hosston	0	0	0	0	0	0
Somervell	G	Brazos	Hosston	930	930	930	930	930	930
Travis	K	Brazos	Hosston	0	0	0	0	0	0
Travis	K	Colorado	Hosston	4,185	4,185	4,185	4,185	4,185	4,185
Williamson	G	Brazos	Hosston	1,746	1,746	1,746	1,746	1,746	1,746
Williamson	G	Colorado	Hosston	5	5	5	5	5	5
Williamson	K	Brazos	Hosston	0	0	0	0	0	0
Williamson	K	Colorado	Hosston	0	0	0	0	0	0
Subtotal			Hosston	67,659	67,659	67,659	67,659	67,659	67,659
Counties in Upper Trinity GCD¹									
Hood	G	Brazos	Hosston	72	72	72	72	72	72
Subtotal			Hosston	72	72	72	72	72	72
GMA 8 Total			Hosston	67,731	67,731	67,731	67,731	67,731	67,731

¹Splits for Upper Trinity GCD are presented since they are included in the GMA 8-wide desired future conditions.

*Note that the Hosston values in this table represent a portion of the total Travis Peak values already provided in Table 20 and do not represent an additional source of water.

LIMITATIONS:

The groundwater model used in completing this analysis is the best available scientific tool that can be used to meet the stated objectives. To the extent that this analysis will be used for planning purposes and/or regulatory purposes related to pumping in the past and into the future, it is important to recognize the assumptions and limitations associated with the use of the results. In reviewing the use of models in environmental regulatory decision making, the National Research Council (2007) noted:

“Models will always be constrained by computational limitations, assumptions, and knowledge gaps. They can best be viewed as tools to help inform decisions rather than as machines to generate truth or make decisions. Scientific advances will never make it possible to build a perfect model that accounts for every aspect of reality or to prove that a given model is correct in all respects for a particular regulatory application. These characteristics make evaluation of a regulatory model more complex than solely a comparison of measurement data with model results.”

A key aspect of using the groundwater model to evaluate historic groundwater flow conditions includes the assumptions about the location in the aquifer where historic pumping was placed. Understanding the amount and location of historic pumping is as important as evaluating the volume of groundwater flow into and out of the district, between aquifers within the district (as applicable), interactions with surface water (as applicable), recharge to the aquifer system (as applicable), and other metrics that describe the impacts of that pumping. In addition, assumptions regarding precipitation, recharge, and streamflow are specific to a particular historic time period.

Because the application of the groundwater model was designed to address regional scale questions, the results are most effective on a regional scale. The TWDB makes no warranties or representations relating to the actual conditions of any aquifer at a particular location or at a particular time.

It is important for groundwater conservation districts to monitor groundwater pumping and groundwater levels in the aquifer. Because of the limitations of the groundwater model and the assumptions in this analysis, it is important that the groundwater conservation districts work with the TWDB to refine this analysis in the future given the reality of how the aquifer responds to the actual amount and location of pumping now and in the future. Historic precipitation patterns also need to be placed in context as future climatic conditions, such as dry and wet year precipitation patterns, may differ and affect groundwater flow conditions.

REFERENCES:

- Anaya, R., 2008, Gam Run 08-010mag: Managed available groundwater for the Edwards (Balcones Fault Zone) Aquifer in Bell, Travis, and Williamson counties, 7 p., http://www.twdb.texas.gov/groundwater/docs/GAMruns/GR08-10mag_final.pdf?d=16598.495
- Groundwater Management Area 8, 2021, Groundwater Management Area 8 Desired Future Conditions Explanatory Report (with technical Assistance from: WSP USA, Advanced Groundwater Solutions, LLC, and Blanton & Associates, Inc.) (August 2021), 85 p.
- Harbaugh, A. W., and McDonald, M. G., 1996, User's documentation for MODFLOW-96, an update to the U.S. Geological Survey modular finite-difference ground-water flow model: U.S. Geological Survey Open-File Report 96-485, 56 p.
- Jones, I., 2003, Groundwater Availability Modeling: Northern Segment of the Edwards Aquifer, Texas (December 2003), 75 p., http://www.twdb.texas.gov/publications/reports/numbered_reports/doc/R358/Rreport%20358%20Northern%20Edwards.pdf?d=1503601352574.
- Kelley, V.A., Ewing, J., Jones, T.L., Young, S.C., Deeds, N., and Hamlin, S., 2014, Updated Groundwater Availability Model of the Northern Trinity and Woodbine Aquifers – Draft Final Model Report (August 2014), 990 p., http://www.twdb.texas.gov/groundwater/models/gam/trnt_n/Final_NTGAM_Vol%20I%20Aug%202014_Report.pdf?d=1503601407956.
- National Research Council, 2007, Models in Environmental Regulatory Decision Making Committee on Models in the Regulatory Decision Process, National Academies Press, Washington D.C., 287 p., http://www.nap.edu/catalog.php?record_id=11972.
- Niswonger, R.G., Panday, S., and Ibaraki, M., 2011, MODFLOW-NWT, a Newton formulation for MODFLOW-2005: United States Geological Survey, Techniques and Methods 6-A37, 44 p.
- Panday, S., Langevin, C.D., Niswonger, R.G., Ibaraki, M., and Hughes, J.D., 2013, MODFLOW-USG version 1: An unstructured grid version of MODFLOW for simulating groundwater flow and tightly coupled processes using a control volume finite-difference formulation: U.S. Geological Survey Techniques and Methods, book 6, chap. A45, 66 p.
- Shi, J., Boghici, R., Kohlrenken, W., and Hutchison, W.R., 2016, Numerical Model Report: Minor Aquifers of the Llano Uplift Region of Texas (Marble Falls, Ellenburger-San Saba, and Hickory). Texas Water Development Board, November 2016, 435p. http://www.twdb.texas.gov/groundwater/models/gam/llano/Llano_Uplift_Numerical_Model_Report_Final.pdf?d=1503601525245.

Texas Water Code, 2011, <http://www.statutes.legis.state.tx.us/docs/WA/pdf/WA.36.pdf>.

Appendix A

Comparison between Desired Future Conditions and Simulated Drawdowns for the Trinity and Woodbine Aquifers

Drawdown values for the Trinity and Woodbine aquifers between 2009 and 2080 were based on the simulated water level values at individual model cells extracted from predictive simulation water level file submitted by Groundwater Management Area 8.

The Paluxy, Glen Rose, Twin Mountains, Travis Peak, Hensell, Hosston, and Antlers are subunits of the Trinity Aquifer. These subunits and Woodbine Aquifer exist in both outcrop and downdip areas (Figures 1 through 8). Kelley and others (2014) further divided these aquifers into five (5) regions, each with unique aquifer combinations and properties (table below and Figures 1 through 8).

Model Layer	Region 1	Region 2	Region 3	Region 4	Region 5	
2	Woodbine			Woodbine (no sand)		
3	Washita/Fredericksburg					
4	Antlers	Paluxy			Paluxy (no sand)	
5		Glen Rose				
6		Twin Mountains	Travis Peak	Hensell	Travis Peak	Hensell
7				Pearsall/Sligo		Pearsall/Sligo
8				Hosston		Hosston

Vertically, the Trinity and Woodbine aquifers could contain multiple model layers and some of the model cells are pass-through cells with a thickness of one foot. To account for variable model cells from multiple model layers for the same aquifer, Groundwater Management Area 8 (2021) adopted a method presented by Van Kelley of INTERA, Inc., which calculated a single composite water level from multiple model cells with each adjusted by transmissivity. This composite water level took both the water level and hydraulic transmissivity at each cell into calculation, as shown in the following equation:

$$H_c = \frac{\sum_{i=UL}^{LL} T_i H_i}{\sum_{i=UL}^{LL} T_i}$$

Where:

H_c = Composite Water Level (feet above mean sea level)

T_i = Transmissivity of model layer i (square feet per day)

H_i = Water Level of model layer i (feet above mean sea level)

LL = Lowest model layer representing the regional aquifer

UL = Uppermost model layer representing the regional aquifer.

Note that multiple model layers can represent a single aquifer or subunit, so the aquifer or subunit designation should be determined by the IBOUND value of a model cell rather than the model layer. When a model cell goes dry, the water level was set to the cell bottom. However, if an aquifer completely goes dry, TWDB assigns the bottom elevation from the lowest model cell of the aquifer to the composite water level.

The average water level for the same aquifer in a county (*Hc_County*) was then calculated using the following equation:

$$Hc_County = \frac{\sum_{i=1}^n Hc_i}{n}$$

Where:

Hc_County = Average composite water level for a county (feet above mean sea level)

Hc_i = Composite Water Level at a lateral location as defined in last step (feet above mean sea level)

n = Total lateral (row, column) locations of an aquifer in a county.

Drawdown of the aquifer in a county (*DD_County*) was calculated using the following equation:

$$DD_County = Hc_County_{2009} - Hc_County_{2080}$$

Where:

Hc_County₂₀₀₉ = Average water level of an aquifer in a county in 2009 as defined above (feet above mean sea level)

Hc_County₂₀₈₀ = Average water level of an aquifer in a county in 2080 as defined above (feet above mean sea level).

If an aquifer went dry in 2009, that lateral location was excluded from the calculation.

In comparison with a simple average calculation based on total model cell count, use of composite water level gives less weight to cells with lower transmissivity values (such as pass-through cells, cells with low saturation in outcrop area, or cells with lower hydraulic conductivity) in water level and drawdown calculation.

Per Groundwater Management Area 8, a desired future condition was met if the simulated drawdown was within five percent or five feet of the desired future condition. Using the water level output file submitted by Groundwater Management Area 8 and the method described above, the TWDB calculated the drawdowns and then compared with the correlated desired future conditions. The comparisons are presented in Tables A1, A2, A3, and A4. The comparison indicates that the predictive simulation meets the desired future conditions of the Trinity and Woodbine aquifers in Groundwater Management Area 8.

TABLE A1. COMPARISON BETWEEN DRAWDOWN AND DESIRED FUTURE CONDITIONS BY GROUNDWATER CONSERVATION DISTRICT (GCD), EXCLUDING UPPER TRINITY GROUNDWATER CONSERVATION DISTRICT.

GCD	Aquifer	Desired Future Condition (feet of drawdown between January 1, 2010 and December 31, 2080)	Simulated Drawdown between Initial Water Levels and Stress Period 71 (feet)	Is Desired Future Condition Violated (Exceeded by 5 feet and 5%)?
Central Texas GCD	Woodbine	—	—	—
	Paluxy	—	—	—
	Glen Rose	2	2	No
	Twin Mountains	—	—	—
	Travis Peak	19	11	No
	Hensell	7	9	No
	Hosston	21	21	No
Clearwater UWCD	Antlers	—	—	—
	Woodbine	—	—	—
	Paluxy	17	18	No
	Glen Rose	83	83	No
	Twin Mountains	—	—	—
	Travis Peak	333	333	No
	Hensell	145	145	No
	Hosston	375	375	No
Middle Trinity GCD	Antlers	—	—	—
	Woodbine	—	—	—
	Paluxy	5	7	No
	Glen Rose	29	29	No
	Twin Mountains	8	6	No
	Travis Peak	98	98	No
	Hensell	77	77	No
	Hosston	124	124	No
North Texas GCD	Antlers	12	12	No
	Woodbine	263	263	No
	Paluxy	690	690	No
	Glen Rose	366	366	No
	Twin Mountains	601	601	No
	Travis Peak	—	—	—
	Hensell	—	—	—
	Hosston	—	—	—
Antlers	305	296	No	

TABLE A1 (CONT). COMPARISON BETWEEN DRAWDOWN AND DESIRED FUTURE CONDITIONS BY GROUNDWATER CONSERVATION DISTRICT (GCD), EXCLUDING UPPER TRINITY GROUNDWATER CONSERVATION DISTRICT.

GCD	Aquifer	Desired Future Condition (feet of drawdown between January 1, 2010 and December 31, 2080)	Simulated Drawdown between Initial Water Levels and Stress Period 71 (feet)	Is Desired Future Condition Violated (Exceeded by 5 feet and 5%)?
Northern Trinity GCD	Woodbine	6	6	No
	Paluxy	105	105	No
	Glen Rose	163	163	No
	Twin Mountains	348	232	No
	Travis Peak	—	—	—
	Hensell	—	—	—
	Hosston	—	—	—
	Antlers	177	83	No
Post Oak Savannah GCD	Woodbine	—	—	—
	Paluxy	—	—	—
	Glen Rose	241	241	No
	Twin Mountains	—	—	—
	Travis Peak	412	412	No
	Hensell	261	261	No
	Hosston	412	412	No
	Antlers	—	—	—
Prairielands GCD	Woodbine	44	44	No
	Paluxy	44	46	No
	Glen Rose	142	142	No
	Twin Mountains	170	46	No
	Travis Peak	323	311	No
	Hensell	201	207	No
	Hosston	364	369	No
	Antlers	—	—	—
Red River GCD	Woodbine	209	211	No
	Paluxy	830	720	No
	Glen Rose	335	308	No
	Twin Mountains	405	405	No
	Travis Peak	291	291	No
	Hensell	—	—	—
	Hosston	—	—	—
	Antlers	321	321	No
Saratoga UWCD	Woodbine	—	—	—
	Paluxy	—	—	—
	Glen Rose	1	1	No
	Twin Mountains	—	—	—
	Travis Peak	6	6	No
	Hensell	1	2	No
	Hosston	11	12	No
	Antlers	—	—	—

TABLE A1 (CONT). COMPARISON BETWEEN DRAWDOWN AND DESIRED FUTURE CONDITIONS BY GROUNDWATER CONSERVATION DISTRICT (GCD), EXCLUDING UPPER TRINITY GROUNDWATER CONSERVATION DISTRICT.

GCD	Aquifer	Desired Future Condition (feet of drawdown between January 1, 2010 and December 31, 2080)	Simulated Drawdown between Initial Water Levels and Stress Period 71 (feet)	Is Desired Future Condition Violated (Exceeded by 5 feet and 5%)?
Southern Trinity GCD	Woodbine	6	6	No
	Paluxy	41	41	No
	Glen Rose	148	148	No
	Twin Mountains	—	—	—
	Travis Peak	504	499	No
	Hensell	242	242	No
	Hosston	582	582	No
	Antlers	—	—	—

TABLE A2. COMPARISON BETWEEN DRAWDOWN AND DESIRED FUTURE CONDITIONS FOR UPPER TRINITY GROUNDWATER CONSERVATION DISTRICT.

GCD	Portion	Aquifer	Desired Future Condition (feet of drawdown between January 1, 2010 and December 31, 2080)	Simulated Drawdown between Initial Water Levels and Stress Period 71 (feet)	Is Desired Future Condition Violated (Exceeded by 5 feet and 5%)?
Upper Trinity GCD	outcrop	Woodbine	—	—	—
		Paluxy	6	6	No
		Glen Rose	15	14	No
		Twin Mountains	10	6	No
		Travis Peak	—	—	—
		Hensell	—	—	—
		Hosston	—	—	—
		Antlers	47	16	No
Upper Trinity GCD	subcrop	Woodbine	—	—	—
		Paluxy	2	2	No
		Glen Rose	45	49	No
		Twin Mountains	70	46	No
		Travis Peak	—	—	—
		Hensell	—	—	—
		Hosston	—	—	—
		Antlers	154	92	No

TABLE A3. COMPARISON BETWEEN DRAWDOWN AND DESIRED FUTURE CONDITIONS BY COUNTY, EXCLUDING COUNTIES IN UPPER TRINITY GROUNDWATER CONSERVATION DISTRICT.

County	Aquifer	Desired Future Condition (feet of drawdown between January 1, 2010 and December 31, 2080)	Simulated Drawdown between Initial Water Levels and Stress Period 71 (feet)	Is Desired Future Condition Violated (Exceeded by 5 feet and 5%)?
Bell	Woodbine	—	—	—
	Paluxy	17	18.46	No
	Glen Rose	83	82.74	No
	Twin Mountains	—	—	—
	Travis Peak	333	332.79	No
	Hensell	145	144.73	No
	Hosston	375	374.76	No
Bosque	Antlers	—	—	—
	Woodbine	—	—	—
	Paluxy	6	6.78	No
	Glen Rose	53	53.38	No
	Twin Mountains	—	—	—
	Travis Peak	189	188.88	No
	Hensell	139	139.01	No
Brown	Hosston	232	232.23	No
	Antlers	—	—	—
	Woodbine	—	—	—
	Paluxy	—	—	—
	Glen Rose	1	1.9	No
	Twin Mountains	—	—	—
	Travis Peak	2	1.23	No
Burnet	Hensell	1	1.14	No
	Hosston	1	1.3	No
	Antlers	2	2.56	No
	Woodbine	—	—	—
	Paluxy	—	—	—
	Glen Rose	2	2.39	No
	Twin Mountains	—	—	—
Callahan	Travis Peak	19	10.76	No
	Hensell	7	8.89	No
	Hosston	21	21.2	No
	Antlers	—	—	—
	Woodbine	—	—	—
	Paluxy	—	—	—
	Glen Rose	—	—	—
Callahan	Twin Mountains	—	—	—
	Travis Peak	—	—	—
	Hensell	—	—	—
	Hosston	—	—	—
	Antlers	1	1.38	No

TABLE A3 (CONT). COMPARISON BETWEEN DRAWDOWN AND DESIRED FUTURE CONDITIONS BY COUNTY, EXCLUDING COUNTIES IN UPPER TRINITY GROUNDWATER CONSERVATION DISTRICT.

County	Aquifer	Desired Future Condition (feet of drawdown between January 1, 2010 and December 31, 2080)	Simulated Drawdown between Initial Water Levels and Stress Period 71 (feet)	Is Desired Future Condition Violated (Exceeded by 5 feet and 5%)?
Collin	Woodbine	482	481.88	No
	Paluxy	729	728.64	No
	Glen Rose	366	365.79	No
	Twin Mountains	560	559.87	No
	Travis Peak	—	—	—
	Hensell	—	—	—
	Hosston	—	—	—
	Antlers	596	583.45	No
Comanche	Woodbine	—	—	—
	Paluxy	—	—	—
	Glen Rose	2	1.44	No
	Twin Mountains	—	—	—
	Travis Peak	4	2.4	No
	Hensell	2	1.76	No
	Hosston	3	2.86	No
	Antlers	12	12.08	No
Cooke	Woodbine	2	2.41	No
	Paluxy	—	—	—
	Glen Rose	—	—	—
	Twin Mountains	—	—	—
	Travis Peak	—	—	—
	Hensell	—	—	—
	Hosston	—	—	—
	Antlers	191	178.36	No
Coryell	Woodbine	—	—	—
	Paluxy	5	7.5	No
	Glen Rose	15	15.37	No
	Twin Mountains	—	—	—
	Travis Peak	107	107.32	No
	Hensell	70	70.02	No
	Hosston	141	140.6	No
	Antlers	—	—	—
Dallas	Woodbine	137	137.41	No
	Paluxy	346	345.58	No
	Glen Rose	288	288.24	No
	Twin Mountains	515	515.09	No
	Travis Peak	415	414.61	No
	Hensell	362	361.55	No
	Hosston	419	418.84	No
	Antlers	—	—	—

TABLE A3 (CONT). COMPARISON BETWEEN DRAWDOWN AND DESIRED FUTURE CONDITIONS BY COUNTY, EXCLUDING COUNTIES IN UPPER TRINITY GROUNDWATER CONSERVATION DISTRICT.

County	Aquifer	Desired Future Condition (feet of drawdown between January 1, 2010 and December 31, 2080)	Simulated Drawdown between Initial Water Levels and Stress Period 71 (feet)	Is Desired Future Condition Violated (Exceeded by 5 feet and 5%)?
Delta	Woodbine	—	—	—
	Paluxy	279	278.97	No
	Glen Rose	198	197.8	No
	Twin Mountains	—	—	—
	Travis Peak	202	202.1	No
	Hensell	—	—	—
	Hosston	—	—	—
	Antlers	—	—	—
Denton	Woodbine	22	20.37	No
	Paluxy	558	557.89	No
	Glen Rose	367	367.03	No
	Twin Mountains	752	742.97	No
	Travis Peak	—	—	—
	Hensell	—	—	—
	Hosston	—	—	—
	Antlers	416	404.5	No
Eastland	Woodbine	—	—	—
	Paluxy	—	—	—
	Glen Rose	—	—	—
	Twin Mountains	—	—	—
	Travis Peak	—	—	—
	Hensell	—	—	—
	Hosston	—	—	—
	Antlers	4	4.11	No
Ellis	Woodbine	76	76.07	No
	Paluxy	128	127.51	No
	Glen Rose	220	220.03	No
	Twin Mountains	413	413.29	No
	Travis Peak	380	380.25	No
	Hensell	290	290.49	No
	Hosston	390	390.34	No
	Antlers	—	—	—
Erath	Woodbine	—	—	—
	Paluxy	6	1.01	No
	Glen Rose	6	5.07	No
	Twin Mountains	8	6.4	No
	Travis Peak	25	20.18	No
	Hensell	12	11.45	No
	Hosston	35	35	No
	Antlers	14	13.56	No

TABLE A3 (CONT). COMPARISON BETWEEN DRAWDOWN AND DESIRED FUTURE CONDITIONS BY COUNTY, EXCLUDING COUNTIES IN UPPER TRINITY GROUNDWATER CONSERVATION DISTRICT.

County	Aquifer	Desired Future Condition (feet of drawdown between January 1, 2010 and December 31, 2080)	Simulated Drawdown between Initial Water Levels and Stress Period 71 (feet)	Is Desired Future Condition Violated (Exceeded by 5 feet and 5%)?
Falls	Woodbine	—	—	—
	Paluxy	159	159.35	No
	Glen Rose	238	238.09	No
	Twin Mountains	—	—	—
	Travis Peak	505	504.77	No
	Hensell	296	296.31	No
	Hosston	511	511.14	No
	Antlers	—	—	—
Fannin	Woodbine	259	259.23	No
	Paluxy	709	708.85	No
	Glen Rose	305	305.1	No
	Twin Mountains	400	400.17	No
	Travis Peak	291	291.45	No
	Hensell	—	—	—
	Hosston	—	—	—
	Antlers	269	268.98	No
Grayson	Woodbine	163	162.86	No
	Paluxy	943	942.74	No
	Glen Rose	364	363.85	No
	Twin Mountains	445	445.2	No
	Travis Peak	—	—	—
	Hensell	—	—	—
	Hosston	—	—	—
	Antlers	364	363	No
Hamilton	Woodbine	—	—	—
	Paluxy	2	2.77	No
	Glen Rose	4	4.25	No
	Twin Mountains	—	—	—
	Travis Peak	26	25.93	No
	Hensell	14	13.99	No
	Hosston	38	38.2	No
	Antlers	—	—	—
Hill	Woodbine	20	19.71	No
	Paluxy	45	44.9	No
	Glen Rose	149	148.93	No
	Twin Mountains	—	—	—
	Travis Peak	365	364.39	No
	Hensell	211	211.07	No
	Hosston	413	412.6	No
	Antlers	—	—	—

TABLE A3 (CONT). COMPARISON BETWEEN DRAWDOWN AND DESIRED FUTURE CONDITIONS BY COUNTY, EXCLUDING COUNTIES IN UPPER TRINITY GROUNDWATER CONSERVATION DISTRICT.

County	Aquifer	Desired Future Condition (feet of drawdown between January 1, 2010 and December 31, 2080)	Simulated Drawdown between Initial Water Levels and Stress Period 71 (feet)	Is Desired Future Condition Violated (Exceeded by 5 feet and 5%)?
Hunt	Woodbine	631	630.96	No
	Paluxy	610	610.15	No
	Glen Rose	326	326.15	No
	Twin Mountains	399	398.85	No
	Travis Peak	350	349.84	No
	Hensell	—	—	—
	Hosston	—	—	—
	Antlers	—	—	—
Johnson	Woodbine	4	3.55	No
	Paluxy	-57	-57.56	No
	Glen Rose	66	65.87	No
	Twin Mountains	184	33.24	No
	Travis Peak	235	178.04	No
	Hensell	120	120.41	No
	Hosston	329	329.41	No
	Antlers	—	—	—
Kaufman	Woodbine	242	241.7	No
	Paluxy	311	311.43	No
	Glen Rose	305	304.98	No
	Twin Mountains	427	427	No
	Travis Peak	372	371.84	No
	Hensell	349	348.53	No
	Hosston	345	344.74	No
	Antlers	—	—	—
Lamar	Woodbine	42	42.07	No
	Paluxy	100	100.09	No
	Glen Rose	107	106.9	No
	Twin Mountains	—	—	—
	Travis Peak	125	124.5	No
	Hensell	—	—	—
	Hosston	—	—	—
	Antlers	132	132.31	No
Lampasas	Woodbine	—	—	—
	Paluxy	—	—	—
	Glen Rose	1	1.22	No
	Twin Mountains	—	—	—
	Travis Peak	6	6.31	No
	Hensell	1	1.56	No
	Hosston	11	11.64	No
	Antlers	—	—	—

TABLE A3 (CONT). COMPARISON BETWEEN DRAWDOWN AND DESIRED FUTURE CONDITIONS BY COUNTY, EXCLUDING COUNTIES IN UPPER TRINITY GROUNDWATER CONSERVATION DISTRICT.

County	Aquifer	Desired Future Condition (feet of drawdown between January 1, 2010 and December 31, 2080)	Simulated Drawdown between Initial Water Levels and Stress Period 71 (feet)	Is Desired Future Condition Violated (Exceeded by 5 feet and 5%)?
Limestone	Woodbine	—	—	—
	Paluxy	199	198.7	No
	Glen Rose	301	300.8	No
	Twin Mountains	—	—	—
	Travis Peak	433	433.11	No
	Hensell	214	214.2	No
	Hosston	445	444.63	No
	Antlers	—	—	—
McLennan	Woodbine	6	6.49	No
	Paluxy	41	41.02	No
	Glen Rose	148	147.65	No
	Twin Mountains	—	—	—
	Travis Peak	504	498.88	No
	Hensell	242	242.36	No
	Hosston	582	581.81	No
	Antlers	—	—	—
Milam	Woodbine	—	—	—
	Paluxy	—	—	—
	Glen Rose	241	240.72	No
	Twin Mountains	—	—	—
	Travis Peak	412	411.52	No
	Hensell	261	260.7	No
	Hosston	412	412.3	No
	Antlers	—	—	—
Mills	Woodbine	—	—	—
	Paluxy	1	0.64	No
	Glen Rose	1	1.2	No
	Twin Mountains	—	—	—
	Travis Peak	9	7.36	No
	Hensell	2	2.16	No
	Hosston	13	13.67	No
	Antlers	—	—	—
Navarro	Woodbine	110	110.34	No
	Paluxy	139	139.22	No
	Glen Rose	266	265.96	No
	Twin Mountains	—	—	—
	Travis Peak	343	343.14	No
	Hensell	295	295.18	No
	Hosston	343	343.41	No
	Antlers	—	—	—

TABLE A3 (CONT). COMPARISON BETWEEN DRAWDOWN AND DESIRED FUTURE CONDITIONS BY COUNTY, EXCLUDING COUNTIES IN UPPER TRINITY GROUNDWATER CONSERVATION DISTRICT.

County	Aquifer	Desired Future Condition (feet of drawdown between January 1, 2010 and December 31, 2080)	Simulated Drawdown between Initial Water Levels and Stress Period 71 (feet)	Is Desired Future Condition Violated (Exceeded by 5 feet and 5%)?
Red River	Woodbine	2	2.28	No
	Paluxy	24	23.74	No
	Glen Rose	40	39.58	No
	Twin Mountains	—	—	—
	Travis Peak	57	56.88	No
	Hensell	—	—	—
	Hosston	—	—	—
	Antlers	15	14.51	No
Rockwall	Woodbine	275	274.86	No
	Paluxy	433	432.69	No
	Glen Rose	343	342.57	No
	Twin Mountains	466	466.49	No
	Travis Peak	—	—	—
	Hensell	—	—	—
	Hosston	—	—	—
	Antlers	—	—	—
Somervell	Woodbine	—	—	—
	Paluxy	4	1.62	No
	Glen Rose	4	4.45	No
	Twin Mountains	50	50.27	No
	Travis Peak	64	64.26	No
	Hensell	17	16.57	No
	Hosston	120	120.22	No
	Antlers	—	—	—
Tarrant	Woodbine	6	6.41	No
	Paluxy	105	105.14	No
	Glen Rose	163	163.16	No
	Twin Mountains	348	231.93	No
	Travis Peak	—	—	—
	Hensell	—	—	—
	Hosston	—	—	—
	Antlers	177	83.43	No
Taylor	Woodbine	—	—	—
	Paluxy	—	—	—
	Glen Rose	—	—	—
	Twin Mountains	—	—	—
	Travis Peak	—	—	—
	Hensell	—	—	—
	Hosston	—	—	—
	Antlers	0	0.26	No

TABLE A3 (CONT). COMPARISON BETWEEN DRAWDOWN AND DESIRED FUTURE CONDITIONS BY COUNTY, EXCLUDING COUNTIES IN UPPER TRINITY GROUNDWATER CONSERVATION DISTRICT.

County	Aquifer	Desired Future Condition (feet of drawdown between January 1, 2010 and December 31, 2080)	Simulated Drawdown between Initial Water Levels and Stress Period 71 (feet)	Is Desired Future Condition Violated (Exceeded by 5 feet and 5%)?
Travis	Woodbine	—	—	—
	Paluxy	—	—	—
	Glen Rose	90	89.73	No
	Twin Mountains	—	—	—
	Travis Peak	219	215.69	No
	Hensell	68	69.19	No
	Hosston	226	224.15	No
	Antlers	—	—	—
Williamson	Woodbine	—	—	—
	Paluxy	—	—	—
	Glen Rose	78	79.23	No
	Twin Mountains	—	—	—
	Travis Peak	220	220.43	No
	Hensell	89	90.6	No
	Hosston	225	225.78	No
	Antlers	—	—	—

TABLE A4. COMPARISON BETWEEN DRAWDOWN AND DESIRED FUTURE CONDITIONS BY COUNTY IN UPPER TRINITY GROUNDWATER CONSERVATION DISTRICT.

County	Portion	Aquifer	Desired Future Condition (feet of drawdown between January 1, 2010 and December 31, 2080)	Simulated Drawdown between Initial Water Levels and Stress Period 71 (feet)	Is Desired Future Condition Violated (Exceeded by 5 feet and 5%)?
Hood	outcrop	Antlers	—	—	—
		Paluxy	6	5.68	No
		Glen Rose	9	9.41	No
		Twin Mountains	13	8.14	No
	subcrop	Antlers	—	—	—
		Paluxy	—	—	—
		Glen Rose	39	39.41	No
		Twin Mountains	72	20.57	No
Montague	outcrop	Antlers	40	20.37	No
		Paluxy	—	—	—
		Glen Rose	—	—	—
		Twin Mountains	—	—	—
	subcrop	Antlers	—	—	—
		Paluxy	—	—	—
		Glen Rose	—	—	—
		Twin Mountains	—	—	—
Parker	outcrop	Antlers	42	8.76	No
		Paluxy	6	5.69	No
		Glen Rose	20	20.06	No
		Twin Mountains	7	2.42	No
	subcrop	Antlers	—	—	—
		Paluxy	2	1.81	No
		Glen Rose	50	50.41	No
		Twin Mountains	68	61.87	No
Wise	outcrop	Antlers	60	16.44	No
		Paluxy	—	—	—
		Glen Rose	—	—	—
		Twin Mountains	—	—	—
	subcrop	Antlers	154	92.38	No
		Paluxy	—	—	—
		Glen Rose	—	—	—
		Twin Mountains	—	—	—

Appendix B

Comparison between Desired Future Conditions and Drawdowns for the Marble Falls, Ellenburger-San Saba, and Hickory Aquifers in Brown, Burnet, Lampasas, and Mills Counties

The water level file from the predictive model output was used to calculate the drawdown (D) within the modeled extent for each aquifer between 2009 and 2080 using the following equation:

$$D = \frac{\sum_{i=1}^n (h_{2009_i} - h_{2080_i})}{n}$$

Where:

n = Total model cells in a county

h_{2009_i} = Water level of 2009 at model cell i (feet)

h_{2080_i} = Water level of 2080 at model cell i (feet)

Model cells with water level values below the cell bottom in 2009 were excluded from the calculation. Also, water level was set at the cell bottom if it fell below the cell bottom in 2080.

The comparison between the simulated drawdowns and the desired future conditions is presented in Table B1. The comparison indicates that the predictive simulation meets the desired future conditions of the Marble Falls, Ellenburger-San Saba, and Hickory aquifers in Brown, Burnet, Lampasas, and Mills counties.

TABLE B1. COMPARISON BETWEEN SIMULATED REMAINING AQUIFER SATURATED THICKNESS AND DESIRED FUTURE CONDITIONS OF MARBLE FALLS, ELLENBURGER-SAN SABA, AND HICKORY AQUIFERS IN BROWN, BURNET, LAMPASAS, AND MILLS COUNTIES.

County	Aquifer	Desired Future Condition (feet of drawdown between 2009 and 2080)	Simulated Drawdown between 2009 and 2080 (feet)	Is Desired Future Condition Violated?
Brown	Marble Falls	3	3	no
	Ellenburger-San Saba	3	3	no
	Hickory	3	3	no
Burnet	Marble Falls	11	11	no
	Ellenburger-San Saba	12	9	no
	Hickory	11	11	no
Lampasas	Marble Falls	16	16	no
	Ellenburger-San Saba	16	16	no
	Hickory	16	16	no
Mills	Marble Falls	9	9	no
	Ellenburger-San Saba	9	9	no
	Hickory	9	9	no

Appendix C

Summary of Dry Model Cell Count for the Trinity, Woodbine, Marble Falls, Ellenburger-San Saba, and Hickory Aquifers

TABLE C1. SUMMARY OF DRY MODEL CELLS FOR TRINITY AND WOODBINE AQUIFERS FROM PREDICTIVE SIMULATION.

County	Aquifer	Year	Total Aquifer Cells	Dry Cells
Bell	Paluxy	2009	1,767	0
		2080	1,767	0
	Glen Rose	2009	23,737	0
		2080	23,737	8
	Hensell	2009	17,390	0
		2080	17,390	0
	Hosston	2009	17,390	0
		2080	17,390	0
Travis Peak	2009	52,170	0	
	2080	52,170	0	
Bosque	Paluxy	2009	13,818	0
		2080	13,818	0
	Glen Rose	2009	22,360	0
		2080	22,360	0
	Hensell	2009	16,034	0
		2080	16,034	0
	Hosston	2009	16,034	0
		2080	16,034	0
Travis Peak	2009	48,102	0	
	2080	48,102	0	
Brown	Glen Rose	2009	36	0
		2080	36	0
	Hensell	2009	1,608	0
		2080	1,608	0
	Hosston	2009	10,258	0
		2080	10,258	0
	Travis Peak	2009	15,847	0
		2080	15,847	0
Antlers	2009	12,354	0	
	2080	12,354	0	

TABLE C1 (CONT). SUMMARY OF DRY MODEL CELLS FOR TRINITY AND WOODBINE AQUIFERS FROM PREDICTIVE SIMULATION.

County	Aquifer	Year	Total Aquifer Cells	Dry Cells
Burnet	Glen Rose	2009	22,534	0
		2080	22,534	0
	Hensell	2009	12,332	0
		2080	12,332	0
	Hosston	2009	22,320	217
		2080	22,320	765
	Travis Peak	2009	44,433	217
		2080	44,433	828
Callahan	Antlers	2009	34,576	0
		2080	34,576	0
Collin	Woodbine	2009	11,762	0
		2080	11,762	2
	Paluxy	2009	12,062	0
		2080	12,062	319
	Glen Rose	2009	12,062	0
		2080	12,062	0
	Twin Mountains	2009	36,186	0
		2080	36,186	0
	Antlers	2009	7,055	0
		2080	7,055	172
Comanche	Glen Rose	2009	1,440	0
		2080	1,440	0
	Hensell	2009	22,362	0
		2080	22,362	0
	Hosston	2009	41,062	0
		2080	41,062	353
	Travis Peak	2009	78,137	0
		2080	78,137	353
	Antlers	2009	23,711	123
		2080	23,711	3,149
Cooke	Woodbine	2009	5,700	0
		2080	5,700	26
	Antlers	2009	77,047	0
		2080	77,047	839

TABLE C1 (CONT). SUMMARY OF DRY MODEL CELLS FOR TRINITY AND WOODBINE AQUIFERS FROM PREDICTIVE SIMULATION.

County	Aquifer	Year	Total Aquifer Cells	Dry Cells
Coryell	Paluxy	2009	6,512	0
		2080	6,512	0
	Glen Rose	2009	41,647	11
		2080	41,647	25
	Hensell	2009	16,914	0
		2080	16,914	0
	Hosston	2009	16,914	0
		2080	16,914	0
Travis Peak	2009	50,742	0	
	2080	50,742	0	
Dallas	Woodbine	2009	14,152	0
		2080	14,152	0
	Paluxy	2009	14,532	0
		2080	14,532	10
	Glen Rose	2009	14,532	0
		2080	14,532	0
	Hensell	2009	80	0
		2080	80	0
	Hosston	2009	80	0
		2080	80	0
	Twin Mountains	2009	43,353	0
		2080	43,353	0
Travis Peak	2009	243	0	
	2080	243	0	
Delta	Paluxy	2009	1,217	0
		2080	1,217	0
	Glen Rose	2009	1,217	0
		2080	1,217	0
	Travis Peak	2009	3,651	0
		2080	3,651	0

TABLE C1 (CONT). SUMMARY OF DRY MODEL CELLS FOR TRINITY AND WOODBINE AQUIFERS FROM PREDICTIVE SIMULATION.

County	Aquifer	Year	Total Aquifer Cells	Dry Cells
Denton	Woodbine	2009	11,991	3
		2080	11,991	10
	Paluxy	2009	3,520	0
		2080	3,520	2,115
	Glen Rose	2009	3,520	0
		2080	3,520	0
	Twin Mountains	2009	10,560	0
		2080	10,560	84
	Antlers	2009	59,107	0
		2080	59,107	5,738
Eastland	Antlers	2009	44,009	74
		2080	44,009	1,116
Ellis	Woodbine	2009	14,207	0
		2080	14,207	0
	Paluxy	2009	15,173	0
		2080	15,173	0
	Glen Rose	2009	15,209	0
		2080	15,209	0
	Hensell	2009	15,120	0
		2080	15,120	0
	Hosston	2009	15,120	0
		2080	15,120	0
	Twin Mountains	2009	225	0
		2080	225	0
	Travis Peak	2009	45,402	0
		2080	45,402	0

TABLE C1 (CONT). SUMMARY OF DRY MODEL CELLS FOR TRINITY AND WOODBINE AQUIFERS FROM PREDICTIVE SIMULATION.

County	Aquifer	Year	Total Aquifer Cells	Dry Cells
Erath	Paluxy	2009	1,443	0
		2080	1,443	0
	Glen Rose	2009	20,905	0
		2080	20,905	32
	Hensell	2009	21,880	0
		2080	21,880	83
	Hosston	2009	8,464	0
		2080	8,464	372
	Twin Mountains	2009	46,114	20
		2080	46,114	286
	Travis Peak	2009	39,220	0
		2080	39,220	1,006
	Antlers	2009	8,983	0
		2080	8,983	962
Falls	Paluxy	2009	1,439	0
		2080	1,439	0
	Glen Rose	2009	5,840	0
		2080	5,840	0
	Hensell	2009	5,840	0
		2080	5,840	0
	Hosston	2009	5,840	0
		2080	5,840	0
	Travis Peak	2009	17,520	0
		2080	17,520	0
Fannin	Woodbine	2009	15,443	3
		2080	15,443	60
	Paluxy	2009	1,582	0
		2080	1,582	0
	Glen Rose	2009	1,582	0
		2080	1,582	0
	Twin Mountains	2009	1,758	0
		2080	1,758	0
	Travis Peak	2009	2,988	0
		2080	2,988	0
	Antlers	2009	63,730	0
		2080	63,730	0

TABLE C1 (CONT). SUMMARY OF DRY MODEL CELLS FOR TRINITY AND WOODBINE AQUIFERS FROM PREDICTIVE SIMULATION.

County	Aquifer	Year	Total Aquifer Cells	Dry Cells
Grayson	Woodbine	2009	17,911	2
		2080	17,911	58
	Paluxy	2009	77	0
		2080	77	0
	Glen Rose	2009	77	0
		2080	77	0
	Twin Mountains	2009	231	0
		2080	231	0
Antlers	2009	77,954	0	
	2080	77,954	327	
Hamilton	Paluxy	2009	1,897	0
		2080	1,897	0
	Glen Rose	2009	36,944	0
		2080	36,944	13
	Hensell	2009	16,890	0
		2080	16,890	0
	Hosston	2009	13,373	0
		2080	13,373	0
Travis Peak	2009	43,636	0	
	2080	43,636	0	
Hill	Woodbine	2009	12,602	0
		2080	12,602	0
	Paluxy	2009	15,648	0
		2080	15,648	0
	Glen Rose	2009	15,766	0
		2080	15,766	0
	Hensell	2009	15,766	0
		2080	15,766	0
	Hosston	2009	15,766	0
		2080	15,766	0
	Travis Peak	2009	47,298	0
		2080	47,298	157

TABLE C1 (CONT). SUMMARY OF DRY MODEL CELLS FOR TRINITY AND WOODBINE AQUIFERS FROM PREDICTIVE SIMULATION.

County	Aquifer	Year	Total Aquifer Cells	Dry Cells
Hood	Paluxy	2009	434	0
		2080	434	0
	Glen Rose	2009	14,461	0
		2080	14,461	74
	Hensell	2009	117	0
		2080	117	0
	Hosston	2009	117	0
		2080	117	5
	Twin Mountains	2009	37,444	0
		2080	37,444	1,710
Travis Peak	2009	351	0	
	2080	351	5	
Hunt	Woodbine	2009	2,193	0
		2080	2,193	0
	Paluxy	2009	1,362	0
		2080	1,362	0
	Glen Rose	2009	1,362	0
		2080	1,362	0
	Twin Mountains	2009	492	0
		2080	492	0
Travis Peak	2009	3,594	0	
	2080	3,594	0	
Johnson	Woodbine	2009	8,407	14
		2080	8,407	68
	Paluxy	2009	11,627	17
		2080	11,627	0
	Glen Rose	2009	12,342	15
		2080	12,342	37
	Hensell	2009	9,462	0
		2080	9,462	0
	Hosston	2009	9,462	0
		2080	9,462	1,278
Twin Mountains	2009	6,816	0	
	2080	6,816	1,836	
Travis Peak	2009	28,386	0	
	2080	28,386	1,278	

TABLE C1 (CONT). SUMMARY OF DRY MODEL CELLS FOR TRINITY AND WOODBINE AQUIFERS FROM PREDICTIVE SIMULATION.

County	Aquifer	Year	Total Aquifer Cells	Dry Cells
Kaufman	Woodbine	2009	1,616	0
		2080	1,616	0
	Paluxy	2009	1,321	0
		2080	1,321	0
	Glen Rose	2009	1,331	0
		2080	1,331	0
	Hensell	2009	82	0
		2080	82	0
	Hosston	2009	82	0
		2080	82	0
	Twin Mountains	2009	960	0
		2080	960	0
Travis Peak	2009	3,033	0	
	2080	3,033	0	
Lamar	Woodbine	2009	9,839	0
		2080	9,839	0
	Paluxy	2009	12,260	0
		2080	12,260	0
	Glen Rose	2009	12,260	0
		2080	12,260	0
	Travis Peak	2009	36,780	0
		2080	36,780	0
Antlers	2009	7,995	0	
	2080	7,995	0	
Lampasas	Glen Rose	2009	8,692	0
		2080	8,692	0
	Hensell	2009	25,364	1
		2080	25,364	1
	Hosston	2009	23,100	0
		2080	23,100	0
	Travis Peak	2009	62,529	1
		2080	62,529	1

TABLE C1 (CONT). SUMMARY OF DRY MODEL CELLS FOR TRINITY AND WOODBINE AQUIFERS FROM PREDICTIVE SIMULATION.

County	Aquifer	Year	Total Aquifer Cells	Dry Cells
Limestone	Paluxy	2009	962	0
		2080	962	0
	Glen Rose	2009	1,760	0
		2080	1,760	0
	Hensell	2009	1,760	0
		2080	1,760	0
	Hosston	2009	1,760	0
		2080	1,760	0
Travis Peak	2009	5,280	0	
	2080	5,280	0	
McLennan	Woodbine	2009	1,909	0
		2080	1,909	0
	Paluxy	2009	16,952	0
		2080	16,952	0
	Glen Rose	2009	16,991	0
		2080	16,991	0
	Hensell	2009	16,991	0
		2080	16,991	0
Hosston	2009	16,991	0	
	2080	16,991	16	
Travis Peak	2009	50,973	0	
	2080	50,973	16	
Milam	Glen Rose	2009	2,579	0
		2080	2,579	0
	Hensell	2009	2,579	0
		2080	2,579	0
	Hosston	2009	2,579	0
		2080	2,579	0
	Travis Peak	2009	7,737	0
		2080	7,737	0

TABLE C1 (CONT). SUMMARY OF DRY MODEL CELLS FOR TRINITY AND WOODBINE AQUIFERS FROM PREDICTIVE SIMULATION.

County	Aquifer	Year	Total Aquifer Cells	Dry Cells
Mills	Paluxy	2009	936	0
		2080	936	0
	Glen Rose	2009	10,615	0
		2080	10,615	2
	Hensell	2009	18,539	0
		2080	18,539	0
	Hosston	2009	14,226	0
		2080	14,226	0
Travis Peak	2009	42,934	0	
	2080	42,934	0	
Montague	Antlers	2009	52,693	0
		2080	52,693	417
Navarro	Woodbine	2009	1,578	0
		2080	1,578	0
	Paluxy	2009	1,755	0
		2080	1,755	0
	Glen Rose	2009	6,326	0
		2080	6,326	0
	Hensell	2009	6,326	0
		2080	6,326	0
	Hosston	2009	6,326	0
		2080	6,326	0
Travis Peak	2009	18,978	0	
	2080	18,978	0	
Parker	Paluxy	2009	5,637	0
		2080	5,637	0
	Glen Rose	2009	11,389	8
		2080	11,389	753
	Twin Mountains	2009	30,326	0
		2080	30,326	223
	Antlers	2009	40,600	0
		2080	40,600	435

TABLE C1 (CONT). SUMMARY OF DRY MODEL CELLS FOR TRINITY AND WOODBINE AQUIFERS FROM PREDICTIVE SIMULATION.

County	Aquifer	Year	Total Aquifer Cells	Dry Cells
Red River	Woodbine	2009	4,222	0
		2080	4,222	0
	Paluxy	2009	8,494	0
		2080	8,494	0
	Glen Rose	2009	8,494	0
		2080	8,494	0
	Travis Peak	2009	25,482	0
		2080	25,482	0
Antlers	2009	1,065	0	
	2080	1,065	0	
Rockwall	Woodbine	2009	33	0
		2080	33	0
	Paluxy	2009	711	0
		2080	711	0
	Glen Rose	2009	711	0
		2080	711	0
	Twin Mountains	2009	2,133	0
		2080	2,133	0
Somervell	Paluxy	2009	851	0
		2080	851	0
	Glen Rose	2009	11,274	0
		2080	11,274	0
	Hensell	2009	3,045	0
		2080	3,045	0
	Hosston	2009	2,640	0
		2080	2,640	0
	Twin Mountains	2009	1,660	0
		2080	1,660	0
Travis Peak	2009	8,325	0	
	2080	8,325	0	

TABLE C1 (CONT). SUMMARY OF DRY MODEL CELLS FOR TRINITY AND WOODBINE AQUIFERS FROM PREDICTIVE SIMULATION.

County	Aquifer	Year	Total Aquifer Cells	Dry Cells
Tarrant	Woodbine	2009	8,901	2
		2080	8,901	3
	Paluxy	2009	15,389	3
		2080	15,389	1,926
	Glen Rose	2009	13,571	0
		2080	13,571	0
	Twin Mountains	2009	40,713	0
		2080	40,713	6,065
Antlers	2009	5,009	0	
	2080	5,009	1,033	
Taylor	Antlers	2009	6,176	0
		2080	6,176	0
Travis	Glen Rose	2009	14,314	25
		2080	14,314	0
	Hensell	2009	11,310	0
		2080	11,310	0
	Hosston	2009	9,400	57
		2080	9,400	123
Travis Peak	2009	30,124	57	
	2080	30,124	124	
Williamson	Glen Rose	2009	24,271	0
		2080	24,271	0
	Hensell	2009	17,454	0
		2080	17,454	0
	Hosston	2009	17,454	0
		2080	17,454	0
Travis Peak	2009	52,362	0	
	2080	52,362	0	
Wise	Antlers	2009	90,469	0
		2080	90,469	3,563

TABLE C2. SUMMARY OF DRY MODEL CELLS FOR MARBLE FALLS, ELLENBURGER-SAN SABA, AND HICKORY AQUIFERS IN BROWN, BURNET, LAMPASAS, AND MILLS COUNTIES FROM PREDICTIVE SIMULATION.

County	Aquifer	Active Cells	Dry Cells (2009)	Dry Cells (2080)
Brown	Marble Falls	1,635	0	0
	Ellenburger-San Saba	1,635	0	0
	Hickory	1,635	0	0
Burnet	Marble Falls	10,810	2,298	2,450
	Ellenburger-San Saba	13,618	709	851
	Hickory	14,334	111	131
Lampasas	Marble Falls	7,614	611	683
	Ellenburger-San Saba	7,895	0	0
	Hickory	7,895	0	0
Mills	Marble Falls	3,540	0	0
	Ellenburger-San Saba	3,540	0	0
	Hickory	3,540	0	0