
GAM RUN 19-021: MIDDLE PECOS GROUNDWATER CONSERVATION DISTRICT MANAGEMENT PLAN

By Grayson Dowlearn
Texas Water Development Board
Groundwater Division
Groundwater Availability Modeling Department
(512) 475-1552
February 18, 2020



Cynthia K. Ridgeway

Cynthia K. Ridgeway is the manager of the Groundwater Availability Modeling Department and is responsible for the oversight of work performed by Grayson Dowlearn under her direct supervision. The seal appearing on this document was authorized by Cynthia K. Ridgeway, P.G. 471 on February 18, 2020.

This page is intentionally blank

GAM RUN 19-021: MIDDLE PECOS GROUNDWATER CONSERVATION DISTRICT MANAGEMENT PLAN

By Grayson Dowlearn
Texas Water Development Board
Groundwater Division
Groundwater Availability Modeling Department
(512) 475-1552
February 13, 2020

EXECUTIVE SUMMARY:

Texas State Water Code, Section 36.1071, Subsection (h) (Texas Water Code, 2011), states that, in developing its groundwater management plan, a groundwater conservation district shall use groundwater availability modeling information provided by the Executive Administrator of the Texas Water Development Board (TWDB) in conjunction with any available site-specific information provided by the district for review and comment to the Executive Administrator.

The TWDB provides data and information to the Middle Pecos Groundwater Conservation District in two parts. Part 1 is the Estimated Historical Water Use/State Water Plan dataset report, which will be provided to you separately by the TWDB Groundwater Technical Assistance Department. Please direct questions about the water data report to Mr. Stephen Allen at 512-463-7317 or stephen.allen@twdb.texas.gov. Part 2 is the required groundwater availability modeling information and this information includes:

1. the annual amount of recharge from precipitation, if any, to the groundwater resources within the district;
2. for each aquifer within the district, the annual volume of water that discharges from the aquifer to springs and any surface-water bodies, including lakes, streams, and rivers; and
3. the annual volume of flow into and out of the district within each aquifer and between aquifers in the district.

The groundwater management plan for the Middle Pecos Groundwater Conservation District should be adopted by the district on or before June 17, 2020 and submitted to the executive administrator of the TWDB on or before July 17, 2020. The current management plan for the Middle Pecos Groundwater Conservation District expires on September 15, 2020.

We used four groundwater availability models to estimate the management plan information for the aquifers within the Middle Pecos Groundwater Conservation District. Information for the Pecos Valley and Edwards-Trinity (Plateau) aquifers is from version 1.01 of the groundwater availability model for the Edwards-Trinity (Plateau) and Pecos Valley aquifers (Anaya and Jones, 2009). Information for the Dockum Aquifer is from version 1.01 of the groundwater availability model for the High Plains aquifer system (Deeds and Jigmond, 2015 and Deeds and Hamlin, 2015). Information for the Rustler Aquifer is from version 1.01 of the groundwater availability model for the Rustler Aquifer (Ewing and others, 2012). Information for the Capitan Reef Complex Aquifer is from version 1.01 of the groundwater availability model for the Capitan Reef Complex Aquifer (Jones, 2016). While a small portion of the Igneous Aquifer underlies the district at the western tip of Pecos County, the model for the Igneous Aquifer does not extend into Pecos County. For more information concerning this aquifer, please contact Mr. Stephen Allen at 512-463-7317 or stephen.allen@twdb.texas.gov.

This report replaces the results of GAM Run 14-010 (Jones, 2014), as the approach used for analyzing model results has been since refined to more accurately delineate flows between hydraulically connected units and official aquifer boundaries. In addition, this analysis includes results from the groundwater availability model for the Capitan Reef Complex Aquifer and the groundwater availability model for the High Plains Aquifer System, both of which were released since the publication of GAM Run 14-010. Tables 1, 2, 3, 4, and 5 summarize the groundwater availability model data required by statute and Figures 1, 2, 3, 4, and 5 show the area of the models from which the values in the tables were extracted. If, after review of the figures, the Middle Pecos Groundwater Conservation District determines that the district boundaries used in the assessment do not reflect current conditions, please notify the TWDB at your earliest convenience.

METHODS:

In accordance with the provisions of the Texas State Water Code, Section 36.1071, Subsection (h), the groundwater availability models mentioned above were used to estimate information for the Middle Pecos Groundwater Conservation District management plan. Water budgets were extracted for the Edwards-Trinity (Plateau) and Pecos Valley aquifers (1981-2000), Dockum Aquifer (1980-2012), Rustler Aquifer (1980-2008), and

Capitan Reef Complex Aquifer (1980-2005). We used ZONEBUDGET Version 3.01 (Harbaugh, 2009) to extract water budgets from the model results. The average annual water budget values for recharge, surface-water outflow, inflow to the district, outflow from the district, and the flow between aquifers within the district are summarized in this report.

PARAMETERS AND ASSUMPTIONS:

Capitan Reef Complex Aquifer

- We used version 1.01 of the groundwater availability model for the Capitan Reef Complex Aquifer. See Jones (2016) for assumptions and limitations of the groundwater availability model.
- The model has five active layers representing the Edwards-Trinity (Plateau) and Pecos Valley aquifers (Layer 1); Dockum Aquifer and Dewey Lake Formation (Layer 2); Rustler Aquifer (Layer 3); Artesia Group, Salado Formation, and Castile Formation (Layer 4); and Capitan Reef Complex Aquifer, Delaware Basin, and San Andres Formation (Layer 5).
- While the model for the Capitan Reef Complex Aquifer includes the Pecos Valley, Edwards-Trinity (Plateau), Dockum, and Rustler aquifers, the focus of the model run was to extract information for the Capitan Reef Complex Aquifer. Thus, model Layer 5 was used for the management plan analysis.
- Water budget terms were averaged for the period 1980 through 2005 (stress periods 50 through 75).
- The model was run with MODFLOW-2005 (Harbaugh, 2005).

Rustler Aquifer

- We used version 1.01 of the groundwater availability model for the Rustler Aquifer. See Ewing and others (2012) for assumptions and limitations of the groundwater availability model.
- The model has two active layers representing the Dewey Lake Formation and Dockum Aquifer (Layer 1) and the Rustler Aquifer (Layer 2). While the model for the Rustler Aquifer includes the Dockum Aquifer, the focus of the model run was to extract information for the Rustler Aquifer. Therefore, model Layer 2 was used for the management plan analysis.

- Water budget terms were averaged for the period 1980 through 2008 (stress periods 63 through 91).
- The model was run with MODFLOW-2000 (Harbaugh and Others, 2000).

Dockum Aquifer

- We used version 1.01 of the groundwater availability model for the High Plains Aquifer System. See Deeds and Jigmond (2015) for assumptions and limitations of the model for the High Plains Aquifer System.
- The groundwater availability model for the High Plains Aquifer System contains four layers representing the Ogallala Aquifer and the Pecos Valley Aquifer (Layer 1); the Rita Blanca Aquifer, the Edwards-Trinity (High Plains) Aquifer, and the Edwards-Trinity (Plateau) Aquifer (Layer 2); the upper Dockum Group (Layer 3); and the lower Dockum Group (Layer 4). Layers 3 and 4, representing the Dockum Aquifer, were analyzed together. While the Pecos Valley and Edwards-Trinity (Plateau) aquifers are included in this model, they were not the focus of the model. Therefore, we used version 1.01 of the groundwater availability model for the Edwards-Trinity (Plateau) and Pecos Valley aquifers for analyzing these aquifers,
- Water budget terms were averaged for the period 1980 through 2012 (stress periods 52 through 84).
- The model was run with MODFLOW-NWT (Niswonger and others, 2011).

Edwards-Trinity (Plateau) and Pecos Valley Aquifers

- We used version 1.01 of the groundwater availability model for the Edwards-Trinity (Plateau) and Pecos Valley aquifers. See Anaya and Jones (2009) for assumptions and limitations of the groundwater availability model for the Edwards-Trinity (Plateau) and Pecos Valley aquifers.
- The model for the Edwards-Trinity (Plateau) and Pecos Valley aquifers includes two active layers representing the Pecos Valley Aquifer and the Edwards Group and equivalent limestone hydrostratigraphic units (Layer 1) and the undifferentiated Trinity Group hydrostratigraphic units (Layer 2) in the district.
- A portion of the area underlying the district represents both the Pecos Valley and Edwards-Trinity (Plateau) aquifers within Layer 1 of the model. We assumed certain model cells are assigned to the Pecos Valley Aquifer and the remaining cells are assigned to the Edwards-Trinity (Plateau) Aquifer where this condition exists.

- Water budget terms were averaged for the period 1981 through 2000 (stress periods 2 through 21).
- The model was run with MODFLOW-96 (Harbaugh and McDonald, 1996).

RESULTS:

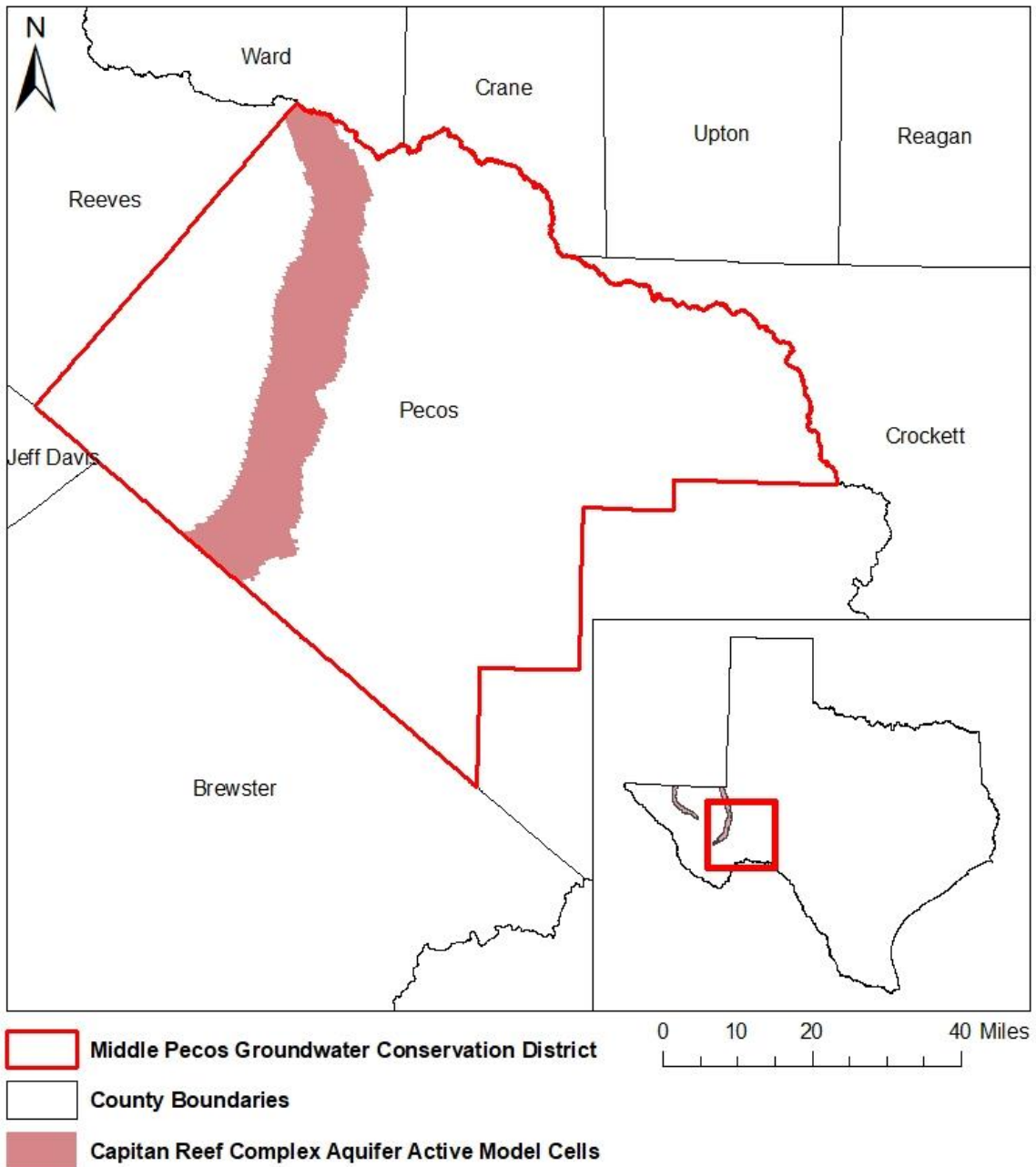
A groundwater budget summarizes the amount of water entering and leaving the aquifer according to the groundwater availability model. Selected groundwater budget components listed below were extracted from the model results for the aquifers located within the district and averaged over the historical calibration periods, as shown in Tables 1, 2, 3, 4 and 5.

1. Precipitation recharge—the areally distributed recharge sourced from precipitation falling on the outcrop areas of the aquifers (where the aquifer is exposed at land surface) within the district.
2. Surface-water outflow—the total water discharging from the aquifer (outflow) to surface-water features such as streams, reservoirs, and springs.
3. Flow into and out of district—the lateral flow within the aquifer between the district and adjacent counties.
4. Flow between aquifers—the net vertical flow between the aquifer and adjacent aquifers or confining units. This flow is controlled by the relative water levels in each aquifer and aquifer properties of each aquifer or confining unit that define the amount of leakage that occurs.

The information needed for the district’s management plan is summarized in Tables 1, 2, 3, 4 and 5. It is important to note that sub-regional water budgets are not exact. This is due to the size of the model cells and the approach used to extract data from the model. To avoid double accounting, a model cell that straddles a political boundary, such as a district or county boundary, is assigned to one side of the boundary based on the location of the centroid of the model cell. For example, if a cell contains two counties, the cell is assigned to the county where the centroid of the cell is located.

TABLE 1: SUMMARIZED INFORMATION FOR THE CAPITAN REEF COMPLEX AQUIFER THAT IS NEEDED FOR THE MIDDLE PECOS GROUNDWATER CONSERVATION DISTRICT'S GROUNDWATER MANAGEMENT PLAN. ALL VALUES ARE REPORTED IN ACRE-FEET PER YEAR AND ROUNDED TO THE NEAREST 1 ACRE-FOOT.

Management Plan requirement	Aquifer or confining unit	Results
Estimated annual amount of recharge from precipitation to the district	Capitan Reef Complex Aquifer	4,860
Estimated annual volume of water that discharges from the aquifer to springs and any surface water body including lakes, streams, and rivers.	Capitan Reef Complex Aquifer	0
Estimated annual volume of flow into the district within each aquifer in the district	Capitan Reef Complex Aquifer	29,953
Estimated annual volume of flow out of the district within each aquifer in the district	Capitan Reef Complex Aquifer	2,823
Estimated net annual volume of flow between each aquifer in the district	From Capitan Reef Complex Aquifer to Artesia Group/Salado Formation/Castile Formation	23,463
	From Capitan Reef Complex Aquifer to Capitan Reef Complex and other units	9,085



gcd boundary date = 07.03.19, county boundary date = 07.03.19, hpas model grid date = 01.06.20

FIGURE 1: AREA OF THE GROUNDWATER AVAILABILITY MODEL FOR THE CAPITAN REEF COMPLEX AQUIFER FROM WHICH THE INFORMATION IN TABLE 1 WAS EXTRACTED (THE CAPITAN REEF COMPLEX AQUIFER EXTENT WITHIN THE DISTRICT BOUNDARY).

TABLE 2: SUMMARIZED INFORMATION FOR THE RUSTLER AQUIFER THAT IS NEEDED FOR THE MIDDLE PECOS GROUNDWATER CONSERVATION DISTRICT'S GROUNDWATER MANAGEMENT PLAN. ALL VALUES ARE REPORTED IN ACRE-FEET PER YEAR AND ROUNDED TO THE NEAREST 1 ACRE-FOOT.

Management Plan requirement	Aquifer or confining unit	Results
Estimated annual amount of recharge from precipitation to the district	Rustler Aquifer	0
Estimated annual volume of water that discharges from the aquifer to springs and any surface water body including lakes, streams, and rivers.	Rustler Aquifer	0
Estimated annual volume of flow into the district within each aquifer in the district	Rustler Aquifer	539
Estimated annual volume of flow out of the district within each aquifer in the district	Rustler Aquifer	418
Estimated net annual volume of flow between each aquifer in the district	From the Rustler Aquifer to the Dockum Aquifer	856
	To the Rustler Aquifer from other overlying units	342
	To the Rustler Aquifer from Rustler Formation	532

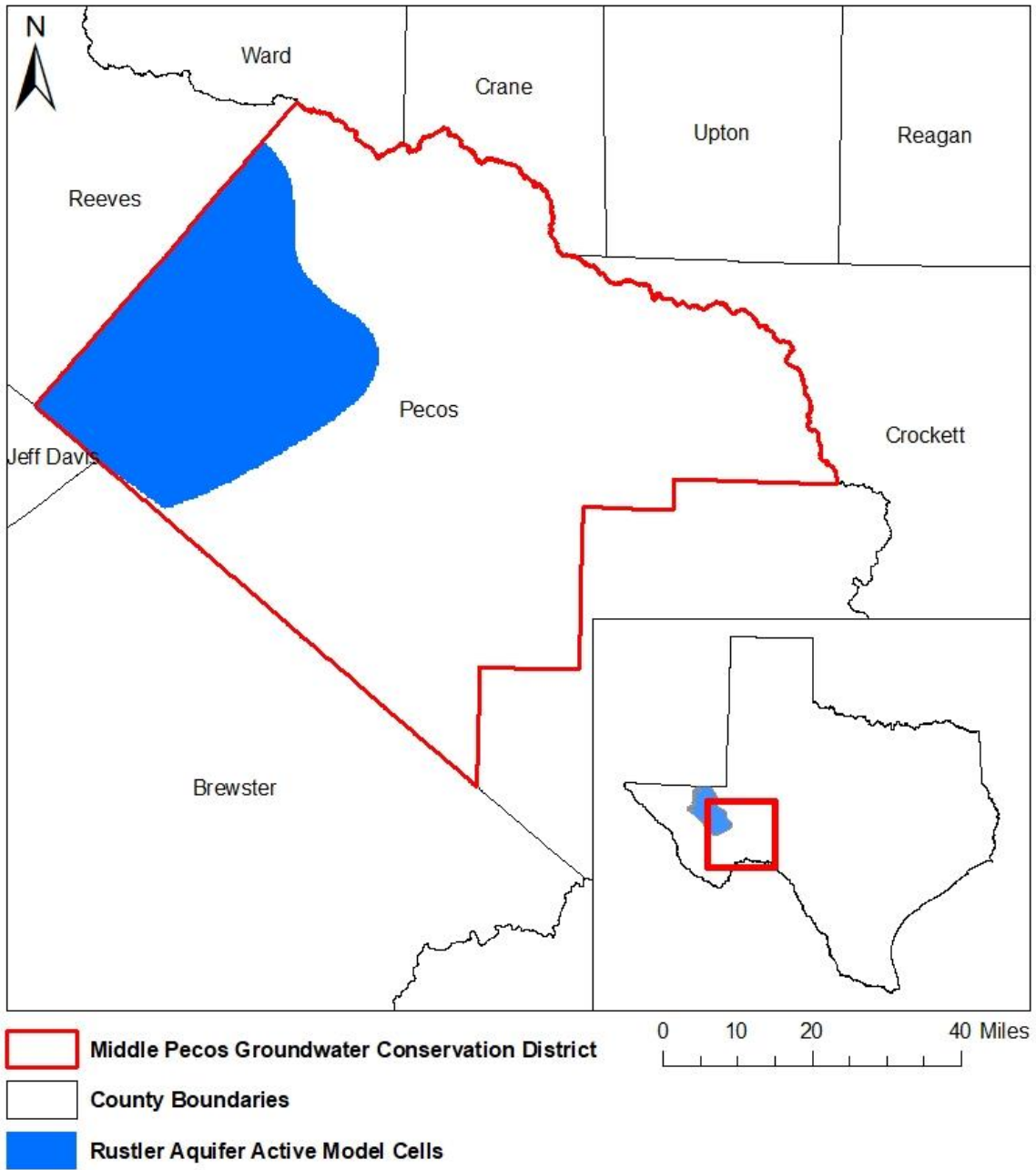
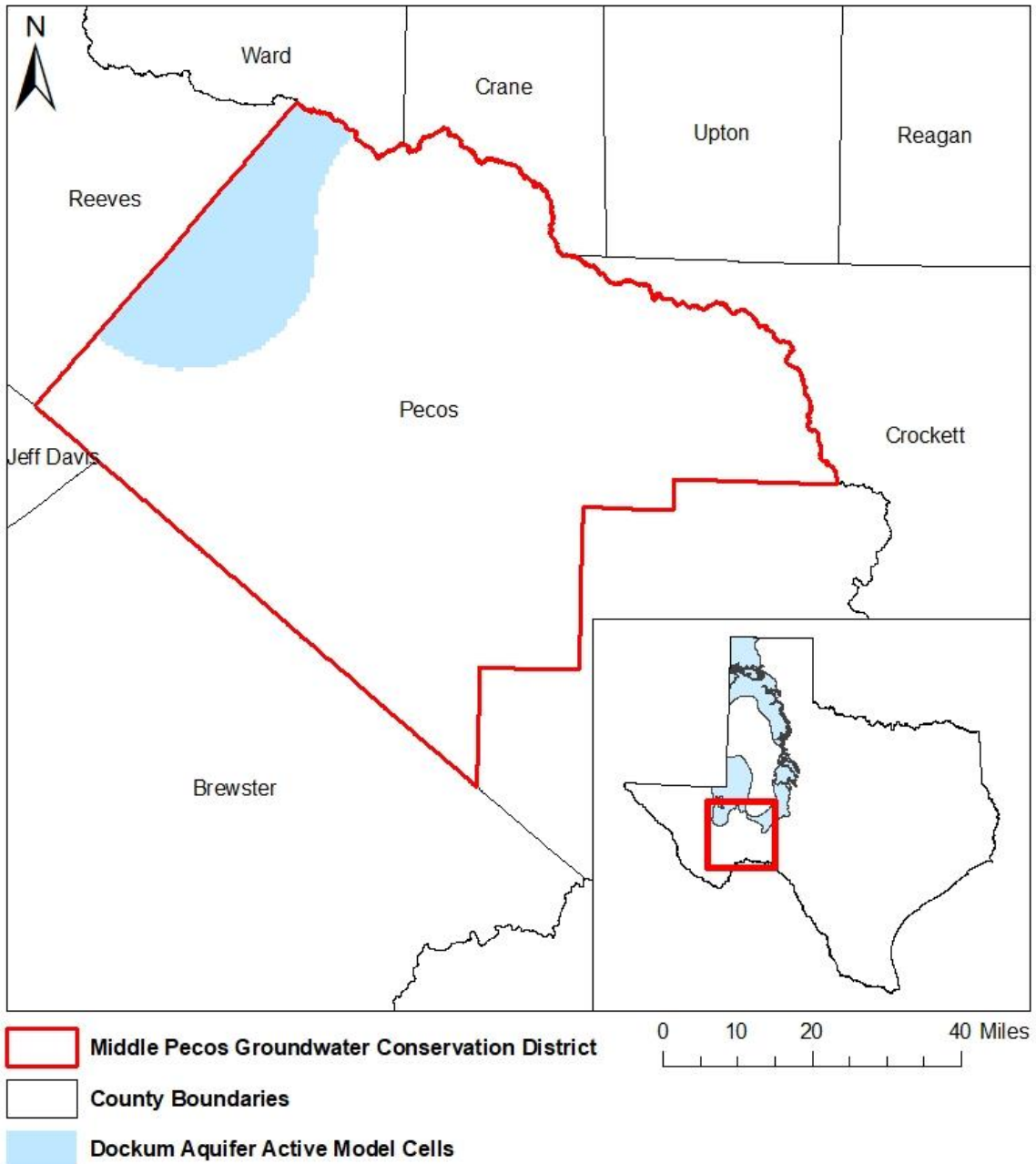


FIGURE 2: AREA OF THE GROUNDWATER AVAILABILITY MODEL FOR THE RUSTLER AQUIFER FROM WHICH THE INFORMATION IN TABLE 2 WAS EXTRACTED (THE RUSTLER AQUIFER EXTENT WITHIN THE DISTRICT BOUNDARY).

TABLE 3: SUMMARIZED INFORMATION FOR THE DOCKUM AQUIFER THAT IS NEEDED FOR THE MIDDLE PECOS GROUNDWATER CONSERVATION DISTRICT'S GROUNDWATER MANAGEMENT PLAN. ALL VALUES ARE REPORTED IN ACRE-FEET PER YEAR AND ROUNDED TO THE NEAREST 1 ACRE-FOOT.

Management Plan requirement	Aquifer or confining unit	Results
Estimated annual amount of recharge from precipitation to the district	Dockum Aquifer	0
Estimated annual volume of water that discharges from the aquifer to springs and any surface water body including lakes, streams, and rivers.	Dockum Aquifer	0
Estimated annual volume of flow into the district within each aquifer in the district	Dockum Aquifer	511
Estimated annual volume of flow out of the district within each aquifer in the district	Dockum Aquifer	320
Estimated net annual volume of flow between each aquifer in the district	From the Dockum Aquifer to the Pecos Valley Aquifer	118
	To the Dockum Aquifer from the Edwards-Trinity (Plateau) Aquifer	160
	To Dockum Aquifer from Rustler Aquifer	856*
	From Dockum Aquifer to Dockum Formation	87

* Indicates value calculated from the groundwater availability model for the Rustler Aquifer, all other values are from the groundwater availability model for the High Plains Aquifer System.



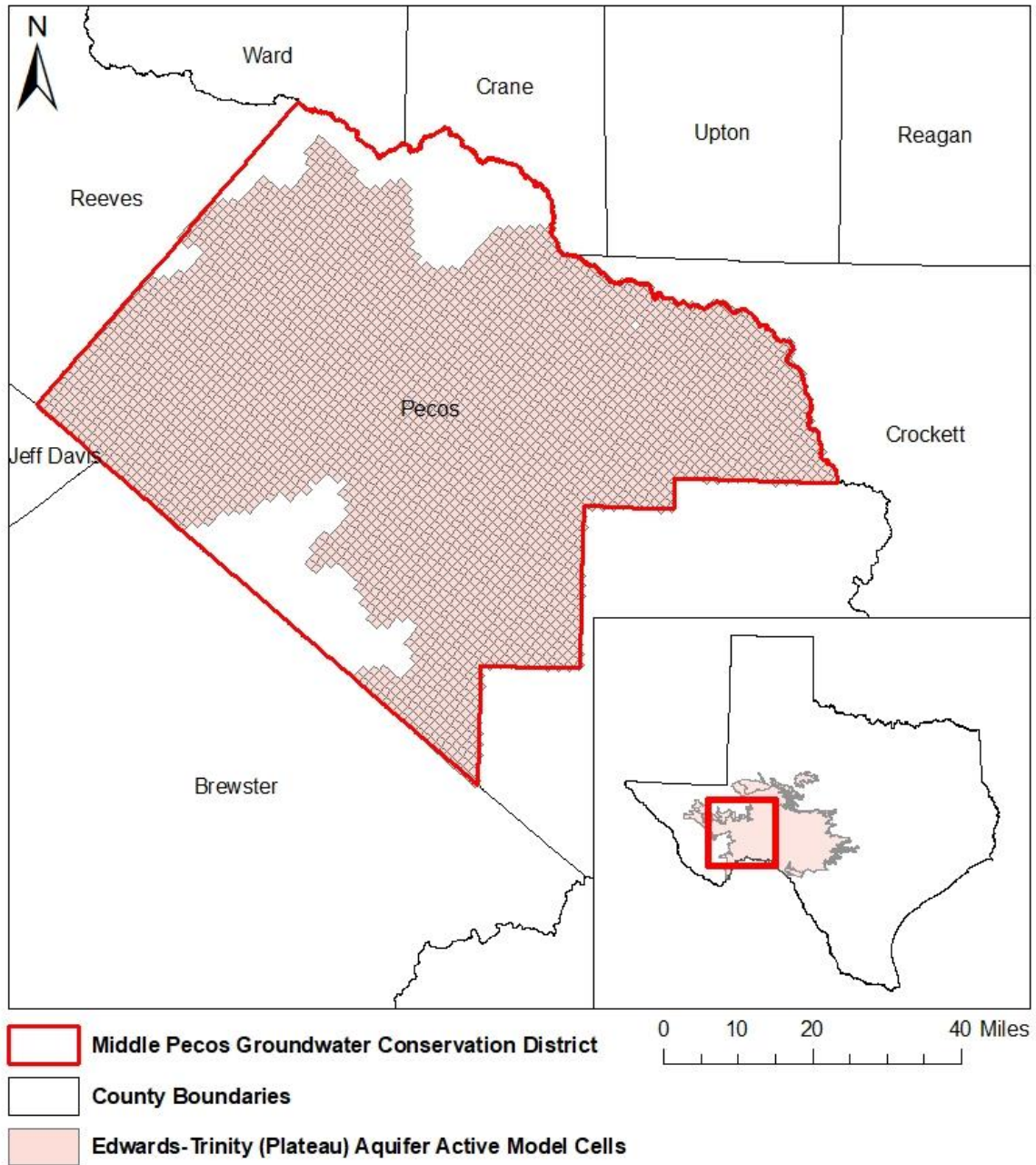
gcd boundary date = 07.03.19, county boundary date = 07.03.19, hpas model grid date = 01.06.20

FIGURE 3: AREA OF THE GROUNDWATER AVAILABILITY MODEL FOR THE HIGH PLAINS AQUIFER SYSTEM FROM WHICH THE INFORMATION IN TABLE 3 WAS EXTRACTED (THE DOCKUM AQUIFER EXTENT WITHIN THE DISTRICT BOUNDARY).

TABLE 4: SUMMARIZED INFORMATION FOR THE EDWARDS-TRINITY (PLATEAU) AQUIFER THAT IS NEEDED FOR THE MIDDLE PECOS GROUNDWATER CONSERVATION DISTRICT'S GROUNDWATER MANAGEMENT PLAN. ALL VALUES ARE REPORTED IN ACRE-FEET PER YEAR AND ROUNDED TO THE NEAREST 1 ACRE-FOOT.

Management Plan requirement	Aquifer or confining unit	Results
Estimated annual amount of recharge from precipitation to the district	Edwards-Trinity (Plateau) Aquifer	141,982
Estimated annual volume of water that discharges from the aquifer to springs and any surface water body including lakes, streams, and rivers.	Edwards-Trinity (Plateau) Aquifer	24,024
Estimated annual volume of flow into the district within each aquifer in the district	Edwards-Trinity (Plateau) Aquifer	32,418
Estimated annual volume of flow out of the district within each aquifer in the district	Edwards-Trinity (Plateau) Aquifer	77,569
Estimated net annual volume of flow between each aquifer in the district	From the Edwards-Trinity (Plateau) Aquifer to the Pecos Valley Aquifer	41,370
	From the Edwards-Trinity (Plateau) Aquifer to the Dockum Aquifer	160*

* Indicates values calculated from the groundwater availability model for the High Plains Aquifer System, all other values are calculated from the groundwater availability model for the Edwards-Trinity (Plateau) and Pecos Valley aquifers.



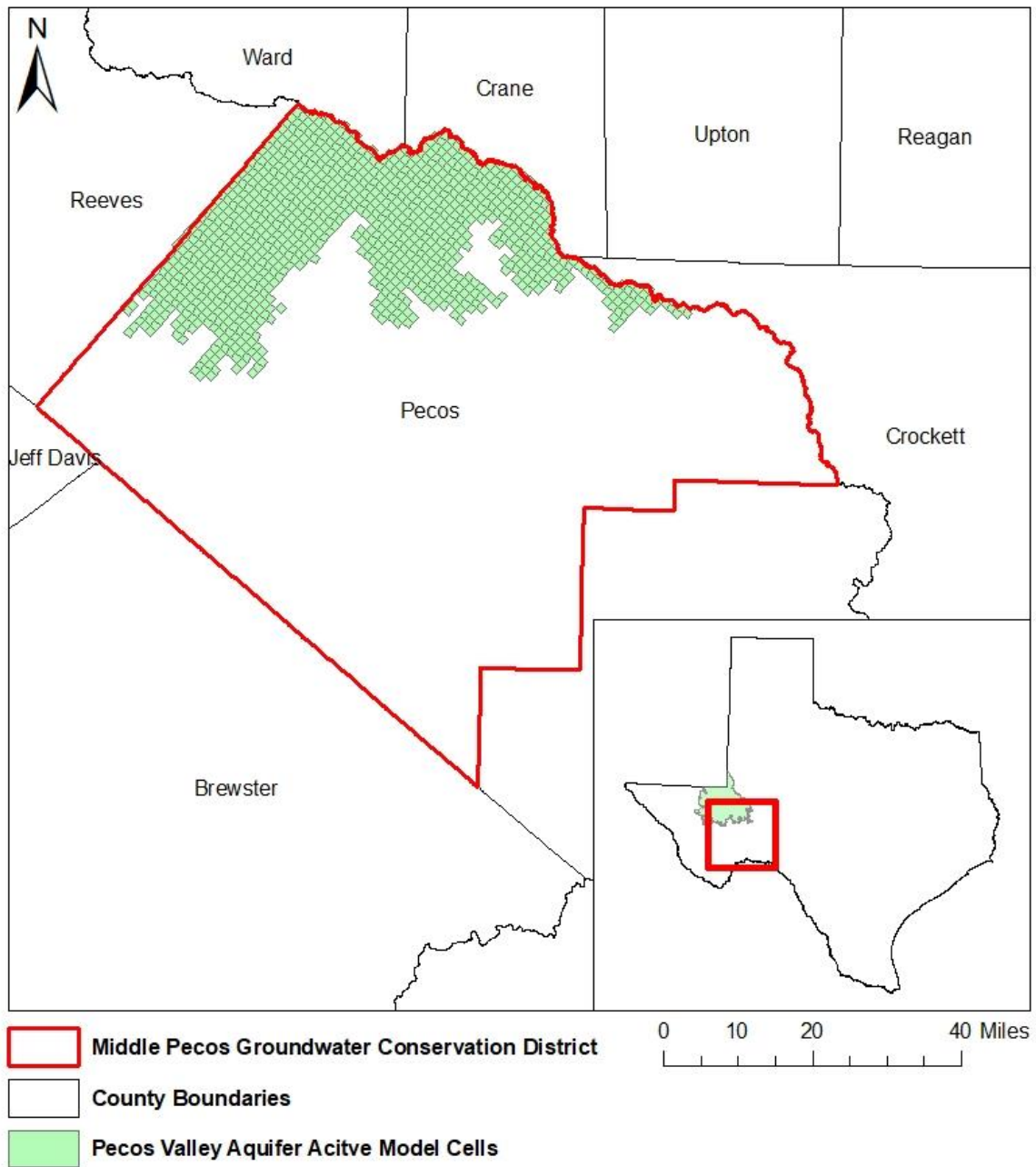
gcd boundary date = 07.03.19, county boundary date = 07.03.19, hpas model grid date = 01.06.20

FIGURE 4: AREA OF THE GROUNDWATER AVAILABILITY MODEL FOR THE EDWARDS-TRINITY (PLATEAU) AND PECOS VALLEY AQUIFERS FROM WHICH THE INFORMATION IN TABLE 4 WAS EXTRACTED (THE EDWARDS-TRINITY (PLATEAU) AQUIFER EXTENT WITHIN THE DISTRICT BOUNDARY).

TABLE 5: SUMMARIZED INFORMATION FOR THE PECOS VALLEY AQUIFER THAT IS NEEDED FOR THE MIDDLE PECOS GROUNDWATER CONSERVATION DISTRICT'S GROUNDWATER MANAGEMENT PLAN. ALL VALUES ARE REPORTED IN ACRE-FEET PER YEAR AND ROUNDED TO THE NEAREST 1 ACRE-FOOT.

Management Plan requirement	Aquifer or confining unit	Results
Estimated annual amount of recharge from precipitation to the district	Pecos Valley	35,919
Estimated annual volume of water that discharges from the aquifer to springs and any surface water body including lakes, streams, and rivers.	Pecos Valley	23,989
Estimated annual volume of flow into the district within each aquifer in the district	Pecos Valley	3,225
Estimated annual volume of flow out of the district within each aquifer in the district	Pecos Valley	15,118
Estimated net annual volume of flow between each aquifer in the district	To the Pecos Valley Aquifer from the Edwards-Trinity (Plateau) Aquifer	41,370
	To the Pecos Valley Aquifer from the Dockum Aquifer	118*

* Indicates values calculated from the groundwater availability model for the High Plains Aquifer System, all other values are calculated from the groundwater availability model for the Edwards-Trinity (Plateau) and Pecos Valley aquifers.



gcd boundary date = 07.03.19, county boundary date = 07.03.19, hpas model grid date = 01.06.20

FIGURE 5: AREA OF THE GROUNDWATER AVAILABILITY MODEL FOR THE EDWARDS-TRINITY (PLATEAU) AND PECOS VALLEY AQUIFERS FROM WHICH THE INFORMATION IN TABLE 5 WAS EXTRACTED (THE PECOS VALLEY AQUIFER EXTENT WITHIN THE DISTRICT BOUNDARY).

LIMITATIONS:

The groundwater models used in completing this analysis is the best available scientific tool that can be used to meet the stated objectives. To the extent that this analysis will be used for planning purposes and/or regulatory purposes related to pumping in the past and into the future, it is important to recognize the assumptions and limitations associated with the use of the results. In reviewing the use of models in environmental regulatory decision making, the National Research Council (2007) noted:

“Models will always be constrained by computational limitations, assumptions, and knowledge gaps. They can best be viewed as tools to help inform decisions rather than as machines to generate truth or make decisions. Scientific advances will never make it possible to build a perfect model that accounts for every aspect of reality or to prove that a given model is correct in all respects for a particular regulatory application. These characteristics make evaluation of a regulatory model more complex than solely a comparison of measurement data with model results.”

A key aspect of using the groundwater model to evaluate historic groundwater flow conditions includes the assumptions about the location in the aquifer where historic pumping was placed. Understanding the amount and location of historic pumping is as important as evaluating the volume of groundwater flow into and out of the district, between aquifers within the district (as applicable), interactions with surface water (as applicable), recharge to the aquifer system (as applicable), and other metrics that describe the impacts of that pumping. In addition, assumptions regarding precipitation, recharge, and interaction with streams are specific to particular historic time periods.

Because the application of the groundwater models was designed to address regional scale questions, the results are most effective on a regional scale. The TWDB makes no warranties or representations related to the actual conditions of any aquifer at a particular location or at a particular time.

It is important for groundwater conservation districts to monitor groundwater pumping and overall conditions of the aquifer. Because of the limitations of the groundwater model and the assumptions in this analysis, it is important that the groundwater conservation districts work with the TWDB to refine this analysis in the future given the reality of how the aquifer responds to the actual amount and location of pumping now and in the future. Historic precipitation patterns also need to be placed in context as future climatic conditions, such as dry and wet year precipitation patterns, may differ and affect groundwater flow conditions.

REFERENCES:

- Anaya, R., and Jones, I. C., 2009, Groundwater availability model for the Edwards-Trinity (Plateau) and Pecos Valley aquifers of Texas: Texas Water Development Board Report 373, 103 p.
http://www.twdb.texas.gov/groundwater/models/gam/eddt_p/ET-Plateau_Full.pdf
- Deeds, N. E. and Jigmond, M., 2015, Numerical Model Report for the High Plains Aquifer System Groundwater Availability Model, Prepared for the Texas Water Development Board by Intera Inc., 640 p.
http://www.twdb.texas.gov/groundwater/models/gam/hpas/HPAS_GAM_Numerical_Report.pdf
- Deeds, Neil E., and Hamlin, Scott, 2015, Final Conceptual Model Report for the High Plains Aquifer System Groundwater Availability Model, Prepared for the Texas Water Development Board by Intera Inc., 590 p.,
http://www.twdb.texas.gov/groundwater/models/gam/hpas/HPAS_GAM_Conceptual_Report.pdf
- Ewing, J. E., Kelley, V. A., Jones, T. L., Yan, T., Singh, A., Powers, D. W., Holt, R. M., and Sharp, J. M., 2012, Groundwater availability model report for the Rustler Aquifer: Prepared for the Texas Water Development Board by Intera Inc., 460 p.
http://www.twdb.texas.gov/groundwater/models/gam/rslr/RSLR_GAM_Report.pdf
- Harbaugh, A. W., 2009, Zonebudget Version 3.01, A computer program for computing subregional water budgets for MODFLOW ground-water flow models, U.S. Geological Survey Groundwater Software.
- Harbaugh, A.W., 2005, MODFLOW-2005, the U.S. Geological Survey modular ground-water model -- the Ground-Water Flow Process: U.S. Geological Survey Techniques and Methods 6-A16.
- Harbaugh, A. W., and McDonald, M. G., 1996, User's documentation for MODFLOW-96, an update to the U.S. Geological Survey modular finite-difference groundwater-water flow model: U.S. Geological Survey Open-File Report 96-485, 56 p.
- Harbaugh, A.W., Banta, E.R., Hill, M.C., and McDonald, M.G., 2000, MODFLOW-2000, The U.S. Geological Survey modular ground-water model-User guide to modularization concepts and the ground-water flow process: U.S. Geological Survey, Open-File Report 00-92.
- Jones, I., 2014, GAM Run 14-010: Texas Water Development Board, GAM Run 14-010 Report, 17 p., <http://www.twdb.texas.gov/groundwater/docs/GAMruns/GR10-010.pdf>.

Jones, I., 2016, Groundwater Availability Model: Eastern Arm of the Capitan Reef Complex Aquifer of Texas: Texas Water Development Board, unpublished report, 494 p.
<http://www.twdb.texas.gov/groundwater/models/gam/crcx/CapitanModelReportFinal.pdf>

National Research Council, 2007, Models in Environmental Regulatory Decision Making Committee on Models in the Regulatory Decision Process, National Academies Press, Washington D.C., 287 p., http://www.nap.edu/catalog.php?record_id=11972.

Niswonger, R. G., Panday, S., and Ibaraki, M., 2011, MODFLOW-NWT, A Newtonian formulation for MODFLOW-2005: U.S. Geological Survey Survey Techniques and Methods 6-A37, 44 p.

Texas Water Code, 2011, <http://www.statutes.legis.state.tx.us/docs/WA/pdf/WA.36.pdf>