

TEXAS BOARD OF WATER ENGINEERS

R. M. Dixon, Chairman
H. A. Beckwith, Member
O. F. Dent, Member

Larry S. Campbell
Parks and Wildlife Dept.
4002 North Chadbourne St.
San Angelo, Texas

BULLETIN 56.11

RECORDS OF WATER-LEVEL MEASUREMENTS IN KINNEY, UVALDE AND
VAL VERDE COUNTIES, TEXAS

1929 TO MARCH 1956

Compiled by

C. R. Follett, Engineer
Texas Board of Water Engineers

From records of the Texas Board of Water Engineers,
and the
Geological Survey, United States Department of the Interior

May 1956

THE UNIVERSITY OF CHICAGO
LIBRARY
540 EAST 57TH STREET
CHICAGO, ILL. 60637

C O N T E N T S

	Page
Introduction	1
List of publications	2
Water-level measurements in Kinney County	6
Water-level measurements in Uvalde County	29
Water-level measurements in Val Verde County	66

ILLUSTRATIONS

Map showing location of observation wells in Kinney County	5
Hydrographs of water levels in wells in Kinney County, Texas	25
Hydrographs of water levels in wells, Kinney County, and annual precipitation at Brackettville, Texas	26
Map showing location of observation wells in Uvalde County, Texas	28
Hydrographs of water levels in wells in Uvalde County and annual precipitation at Uvalde, Texas	62
Hydrographs of water levels in wells in Uvalde County, Texas	63
Map showing location of observation wells in Val Verde County, Texas	65
Hydrographs of water levels in wells, Val Verde County, and annual precipitation at Del Rio, Texas	70



RECORDS OF WATER-LEVEL MEASUREMENTS IN KINNEY, UVALDE AND
VAL VERDE COUNTIES, TEXAS

1929 TO MARCH 1956

Compiled by
C. R. Follett, Engineer
Texas Board of Water Engineers
May 1956

INTRODUCTION

The Texas Board of Water Engineers is charged with making independently, or in cooperation with other state and federal agencies, scientific investigations of the source, amount and quality of ground-water supplies. To evaluate effects of ground-water development in relation to available supply, periodic measurements of water levels are made in the principal reservoirs of the state through an observation well program financed cooperatively by the Texas Board of Water Engineers, and the United States Geological Survey.

Water levels in some observation wells are published annually in Water-Supply Papers of the Geological Survey. County water-level reports are published periodically by the Texas Board of Water Engineers, and include recorded water levels in selected observation wells. This bulletin contains measurements of the depth to water in feet below land-surface datum in 55 wells in Kinney County, 121 wells in Uvalde County, and 12 wells in Val Verde County. These records cover the period from 1929 to March 1956 in Uvalde County and from 1937 to March 1956 in Kinney and Val Verde Counties.

During 1930-32, an investigation was made of the water resources of Medina and Uvalde Counties by the Texas Board of Water Engineers and the Geological Survey. The results of the investigation was published in 1936 in Geological Survey Water-Supply Paper 678. During parts of 1937-39, an inventory of wells in Kinney and Val Verde Counties was made, and the results published by the Texas Board of Water Engineers in 1940. The results of later studies in Kinney and Uvalde Counties are now in the open file and will soon be published as Bulletin 5608. Water-level measurements in selected observation wells made during the time of the investigations, as well as interim measurements, are included in this bulletin.

The water-level measurements are reported in feet below land-surface datum. The accompanying maps show the locations of the observation wells. The well numbers on the map correspond to those outside the parentheses in the table of measurements. Where there is a number inside the parentheses, it is a number assigned to this well in some publications prior to 1956. Hydrographs showing the fluctuation of water levels in some wells and the annual precipitation will be found as follows: Kinney County on pages 26 and 25; Uvalde County on pages 62 and 63; and Val Verde County on page 70. Records of water wells, geologic data and discussions of ground-water conditions may be found in the included list of publications.

LIST OF PUBLICATIONS

BENNETT, R. B., 1940, Records of wells and springs in Kinney County: Texas Board of Water Engineers.*

BROADHURST, W. L., SUNDSTROM, R. W., and ROWLEY, J. H., 1946, Public water supplies in southern Texas: Texas Board of Water Engineers.*

_____, 1951, Public water supplies in southern Texas:
U. S. Geol. Survey Water-Supply Paper 1070.

BROADHURST, W. L., SUNDSTROM, R. W., and WEAVER, D. E., 1949, Public water supplies in western Texas: Texas Board of Water Engineers.

_____, 1951, Public water supplies in western Texas:
U. S. Geol. Survey Water-Supply Paper 1106.

FRAZIER, J. M., 1940, Records of wells and springs in Val Verde County: Texas Board of Water Engineers.

LANG, JOE W., 1954, Ground-water resources of the San Antonio area, Texas: Texas Board of Water Engineers, Bulletin 5412.

LIVINGSTON, PENN P., 1947, Relationship of ground water to the discharge of the Leona River in Uvalde and Zavala Counties, Texas: Texas Board of Water Engineers.

PETITT, BEN M., and GEORGE, W. O., Ground-water resources of the San Antonio area, Texas: Texas Board of Water Engineers, Bulletin 5608, vol. I and II. (Now in open file)

MEINZER, O. E., and WENZEL, L. K., 1940, Water levels and artesian pressure in observation wells in the United States in 1939: U. S. Geol. Survey Water-Supply Paper 886.*

_____, 1941, Water levels and artesian pressure in observation wells in the United States in 1940: U. S. Geol. Survey Water-Supply Paper 909.*

_____, 1943, Water levels and artesian pressure in observation wells in the United States in 1941: U. S. Geol. Survey Water-Supply Paper 939.*

_____, 1944, Water levels and artesian pressure in observation wells in the United States in 1942: U. S. Geol. Survey Water-Supply Paper 947.*

_____, 1946, Water levels and artesian pressure in observation wells in the United States in 1943: Part 4, U. S. Geol. Survey Water-Supply Paper 989.*

LIST OF PUBLICATIONS

- SAYNE, A. N., and OTHERS, 1947, Water levels and artesian pressure in observation wells in the United States in 1944: Part 4, U. S. Geol. Survey Water-Supply Paper 1019.
- _____, 1948, Water levels and artesian pressure in observation wells in the United States in 1945: Part 4, U. S. Geol. Survey Water-Supply Paper 1026.*
- _____, 1949, Water levels and artesian pressure in observation wells in the United States in 1946: Part 4, U. S. Geol. Survey Water-Supply Paper 1074.*
- _____, 1950, Water levels and artesian pressure in observation wells in the United States in 1947: Part 4, U. S. Geol. Survey Water-Supply Paper 1099.*
- _____, 1951, Water levels and artesian pressure in observation wells in the United States in 1948: Part 4, U. S. Geol. Survey Water-Supply Paper 1129.*
- _____, 1952, Water levels and artesian pressure in observation wells in the United States in 1949: Part 4, U. S. Geol. Survey Water-Supply Paper 1159.*
- _____, 1953, Water levels and artesian pressure in observation wells in the United States in 1950: Part 4, U. S. Geol. Survey Water-Supply Paper 1168.*
- _____, 1954, Water levels and artesian pressure in observation wells in the United States in 1951: Part 4, U. S. Geol. Survey Water-Supply Paper 1194.*
- _____, 1954, Water levels and artesian pressure in observation wells in the United States in 1952: Part 4, U. S. Geol. Survey Water-Supply Paper 1224.*

* Out of print. Copies available for reference in some public libraries and at the Austin offices of the Texas Board of Water Engineers and the U. S. Geological Survey.

THE UNIVERSITY OF CHICAGO

PHYSICS DEPARTMENT

CHICAGO, ILLINOIS

Dear Mr. [Name]:

I have received your letter of [Date] regarding [Subject].

The information you provided is being reviewed.

We will contact you again once a decision has been reached.

Thank you for your interest in our program.

Sincerely,
[Name]

[Title]

[Address]

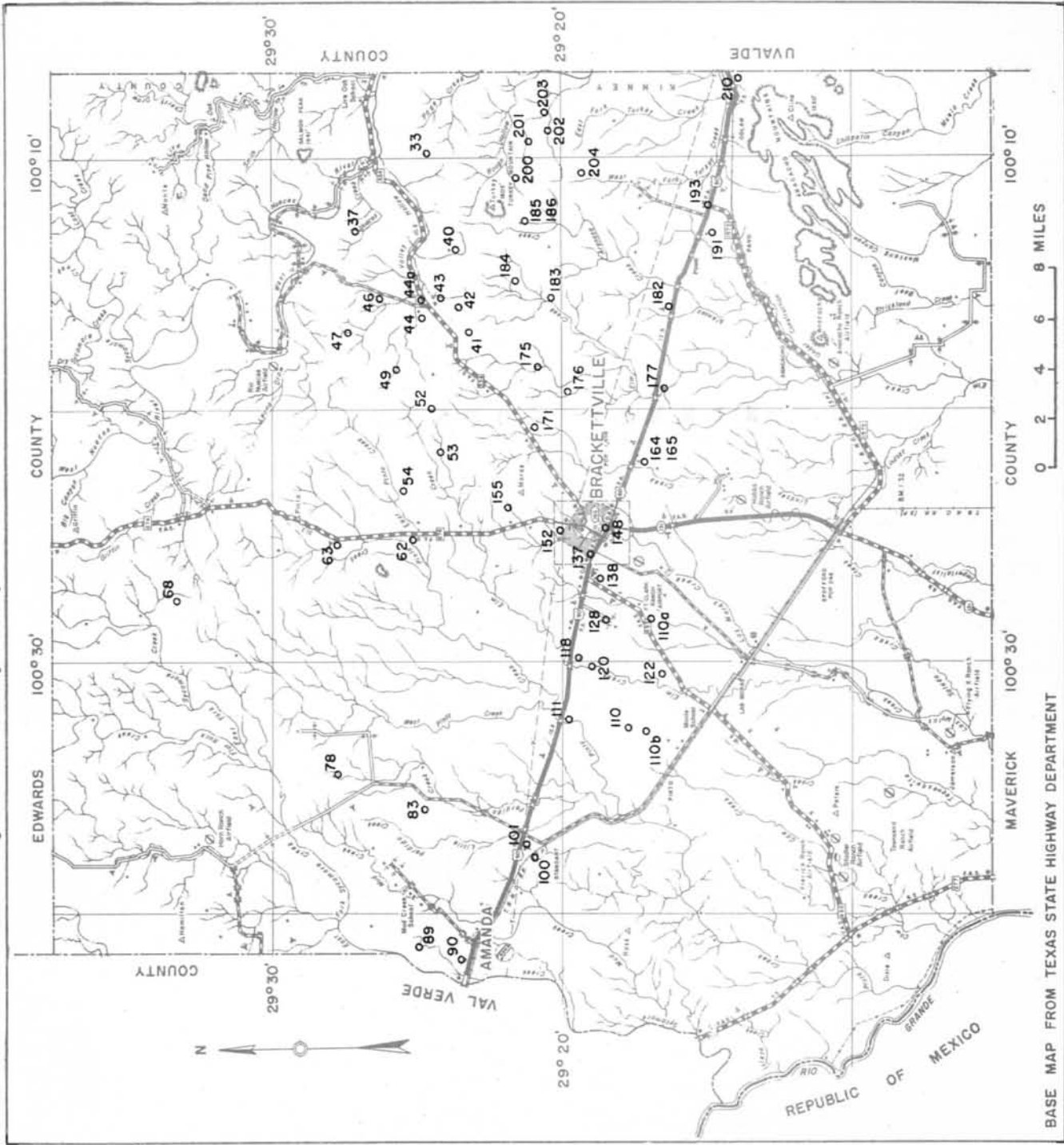
[Phone Number]

[Fax Number]

KINNEY COUNTY

Copyrighted material

Copyrighted material



BKW

OBSERVATION WELLS IN KINNEY COUNTY, TEXAS
 MARCH 1956

BASE MAP FROM TEXAS STATE HIGHWAY DEPARTMENT

WATER LEVEL MEASUREMENTS IN KINNEY COUNTY, TEXAS

33. R. Lackey. Lat. $29^{\circ}24'$, long. $100^{\circ}09'$. Depth 275 feet, diameter 5 inches. Land-surface datum is 1,383.2 feet above msl.

Date	Water level	Date	Water level	Date	Water level
Jan. 9, 1951	223.19	Sept. 13, 1952	224.85	Aug. 24, 1954	219.60
Mar. 16, 1952	226.23				

37. Nolan & Postell. Lat. $29^{\circ}27'$, long. $100^{\circ}10'$. Depth 455 feet, diameter 6 inches. Land-surface datum is 1,408.6 feet above msl.

Date	Water level	Date	Water level	Date	Water level
June 14, 1938	205.20	Jan. 10, 1951	201.14	Sept. 13, 1952	193.76

40. N. P. Petersen. Lat. $29^{\circ}23'$, long. $100^{\circ}13'$. Diameter 6 inches. Land-surface datum is 1,392.6 feet above msl.

Date	Water level	Date	Water level	Date	Water level
June 16, 1938	230.0	Mar. 16, 1952	239.9	Aug. 23, 1954	219.31
Jan. 19, 1951	236.06	Sept. 13	236.19		

41. (XK-180). N. P. Petersen. Lat. $29^{\circ}23'$, long. $100^{\circ}16'$. Depth 475 feet, diameter 6 inches. Land-surface datum is 1,319.6 feet above msl.

Date	Water level	Date	Water level	Date	Water level
June 15, 1938	177.73	Aug. 13, 1941	176.62	Sept. 13, 1952	176.46
Apr. 11, 1939	177.80	Nov. 13	176.18	Dec. 4	179.64
May 6	179.10	Apr. 7, 1942	176.95	Apr. 7, 1953	177.54
June 13	179.80	Aug. 5	177.90	Aug. 11	180.97
July 8	176.94	Dec. 1	177.71	Nov. 19	179.10
Aug. 12	178.10	Apr. 27, 1943	180.99	Apr. 13, 1954	180.99
Sept. 16	175.79	Apr. 3, 1946	180.45	June 2	177.86
Oct. 24	175.78	Nov. 6, 1947	175.38	July 14	174.90
Dec. 2	178.88	Apr. 22, 1948	176.05	July 22	178.08
Jan. 25, 1940	175.89	Aug. 10	178.16	Aug. 23	176.88
Feb. 23	175.82	Aug. 28, 1949	173.55	Jan. 12, 1955	176.07
Mar. 20	176.10	Apr. 5, 1950	175.24	Mar. 10	176.04
Apr. 25	176.23	Aug. 9	175.65	May 11	176.24
May 22	175.71	Dec. 7	179.11	July 12	174.64
June 19	175.77	Jan. 9, 1951	179.54	Sept. 13	176.34
Aug. 21	176.04	May 15	178.00	Nov. 9	175.22
Sept. 19	177.96	Aug. 15	176.24	Jan. 11, 1956	175.95
Oct. 22	176.08	Dec. 19	178.27	Mar. 14	176.23
Jan. 22, 1941	176.78	Mar. 15, 1952	176.36		
May 27	176.72	Aug. 7	178.93		

KINNEY COUNTY

42. N. P. Petersen. Lat. 29°23', long. 100°15'. Depth 350 feet, diameter 5 inches. Land-surface datum is 1,367.3 feet above msl.

Date	Water level	Date	Water level	Date	Water level
June 16, 1938	175.73	Mar. 15, 1952	202.94	Aug. 23, 1954	198.19
Jan. 9, 1951	202.24	Sept. 13	203.69		

43. N. P. Petersen. Lat. 29°24', long. 100°15'. Depth 380 feet, diameter 6 inches. Land-surface datum is 1,365.8 feet above msl.

Date	Water level	Date	Water level	Date	Water level
June 13, 1938	174.87	Mar. 15, 1952	183.44	Aug. 24, 1954	174.47
Jan. 9, 1951	181.40	Sept. 12	182.91		

44. (XK-172). Nolan & Postell. Lat. 29°25', long. 100°16'. Depth 360 feet, diameter 6 inches. Land-surface datum is 1,352.4 feet above msl.

Date	Water level	Date	Water level	Date	Water level
June 14, 1938	166.99	June 13, 1939	170.70	July 15, 1939	170.20
Apr. 11, 1939	170.29	July 8	171.47	Apr. 27, 1943	180.66

44a. Brown & Root. Lat. 29°24', long. 100°15'.

Date	Water level	Date	Water level	Date	Water level
Dec. 4, 1952	161.33	July 22, 1954	156.89	July 12, 1955	158.61
Apr. 7, 1953	161.01	Aug. 24	154.45	Sept. 13	158.57
Nov. 19	159.98	Nov. 10	158.84	Nov. 9	155.63
Apr. 13, 1954	160.90	Jan. 12, 1955	160.02	Jan. 11, 1956	159.62
June 2	158.20	Mar. 10	160.29	Mar. 14	160.21
July 14	154.72	May 11	160.46		

46. (XK-170). Nolan & Postell. Lat. 29°25', long. 100°15'. Depth 342 feet. Land-surface datum is 1,407.3 feet above msl.

Date	Water level	Date	Water level	Date	Water level
Jan. 27, 1940	190.65	May 27, 1941	189.16	Dec. 20, 1949	189.22
Feb. 22	190.36	Nov. 13	190.73	Apr. 5, 1950	195.01
Feb. 23	190.36	Dec. 1, 1942	188.56	Aug. 9	200.49
Mar. 20	191.55	Apr. 3, 1946	194.55	Dec. 7	191.47
Apr. 25	191.55	June 24, 1947	105.02	May 15, 1951	221.74
May 22	190.03	Nov. 6	189.73	Aug. 15	214.95
July 24	189.13	Apr. 22, 1948	190.12	Dec. 19	222.09
Aug. 21	190.66	Aug. 10	197.10	Mar. 15, 1952	222.95
Oct. 22	192.76	Jan. 9, 1949	196.00	Sept. 12	217.20
Dec. 3	192.06	Apr. 14	187.00		
Jan. 21, 1941	191.22	Aug. 28	182.25		

KINNEY COUNTY

47. Brown & Root. Lat. 29°27', long. 100°17'. Depth 365 feet, diameter 6 inches. Land-surface datum is 1,483.5 feet above msl.

Date	Water level	Date	Water level	Date	Water level
June 13, 1938	194.18	Mar. 16, 1952	201.50	Aug. 24, 1954	193.44
Jan. 10, 1951	178.19	Sept. 13	199.09		

49. Nolan & Postell. Lat. 29°24', long. 100°18'. Depth 395 feet, diameter 6 inches. Land-surface datum is 1,467.8 feet above msl.

Date	Water level	Date	Water level	Date	Water level
Jan. 10, 1951	230.19	Mar. 16, 1952	236.05	Sept. 13, 1952	243.80

52. N. P. Petersen. Lat. 29°24', long. 100°19'. Depth 480 feet, diameter 5 inches. Land-surface datum is 1,415.8 feet above msl.

Date	Water level	Date	Water level	Date	Water level
June 15, 1938	224.81	Mar. 16, 1952	237.1	Aug. 23, 1954	221.40
Jan. 12, 1951	230.0	Sept. 13	228.82		

53. (XK-269). E. Webb. Lat. 29°24', long. 100°21'. Diameter 6 inches. Land-surface datum is 1,342.0 feet above msl.

Date	Water level	Date	Water level	Date	Water level
Jan. 10, 1940	146.77	July 24, 1940	133.35	Aug. 29, 1941	156.28
Feb. 23	156.78	Sept. 18	135.15	Jan. 12, 1951	175.44
Mar. 20	161.49	Oct. 23	141.89	Mar. 14, 1952	185.40
Apr. 25	160.76	Dec. 3	143.39	Aug. 23, 1954	145.02
May 22	160.50	Jan. 22, 1941	163.87		
June 19	148.81	May 28	134.86		

54. (XK-112). E. Webb. Lat. 29°24', long. 100°22'. Diameter 6 inches. Land-surface datum is 1,401.3 feet above msl.

Date	Water level	Date	Water level	Date	Water level
Apr. 13, 1938	187.08	Jan. 10, 1940	188.4	Sept. 19, 1940	195.38
Jan. 23, 1939	190.70	Feb. 22	194.88	Oct. 23	197.74
May 1	205.80	Feb. 23	194.93	Dec. 3	199.82
June 13	208.10	Mar. 19	196.83	Jan. 22, 1941	200.80
July 8	201.50	Apr. 25	196.14	May 28	187.52
July 15	194.72	May 22	189.74	Nov. 13	192.25
Aug. 12	180.98	June 18	190.29	Aug. 29, 1943	202.14
Sept. 15	183.93	June 19	190.58	June 5, 1945	202.22
Oct. 24	183.68	July 24	184.04	Apr. 3, 1946	204.05
Dec. 2	181.55	Aug. 21	190.15	July 1, 1947	174.21
		(Continued on next page)			

KINNEY COUNTY

54. (XK-112).- Continued

Date	Water level	Date	Water level	Date	Water level
Nov. 6, 1947	190.88	Apr. 13, 1954	213.88	May 11, 1955	199.52
Jan. 12, 1951	202.14	June 2	185.24	July 12	188.86
Mar. 15, 1952	203.15	July 14	170.66	Sept. 13	189.07
Sept. 13	200.70	July 22	169.76	Nov. --	176.66
Dec. 4	205.59	Aug. 23	170.63	Jan. 11, 1956	190.67
Apr. 7, 1953	205.83	Jan. 13, 1955	193.45	Mar. 14	197.62
Nov. 19	195.25	Mar. 10	197.27		

62. (XK-114). E. Webb. Lat. 29°25', long. 100°25'. Diameter 6 inches.
Land-surface datum is 1,255.2 feet above msl.

Apr. 13, 1938	62.91	Aug. 12, 1941	66.08	Aug. 10, 1950	68.26
Apr. 11, 1939	67.02	Nov. 13	65.69	Dec. 7	69.09
May 1	67.46	Apr. 7, 1942	68.86	May 15, 1951	69.90
June 13	68.04	Aug. 5	69.83	Aug. 15	70.57
July 8	68.45	Dec. 1	65.41	Dec. 19	68.81
July 15	67.35	Apr. 27, 1943	67.83	Mar. 14, 1952	70.33
Aug. 11	64.87	Aug. 29	67.54	Aug. 8	66.16
Sept. 14	64.80	Dec. 17	66.82	Apr. 7, 1953	70.68
Oct. 24	64.85	May 2, 1944	65.03	Aug. 11	71.79
Dec. 2	64.33	Aug. 17	66.37	Nov. 19	67.19
Jan. 9, 1940	64.67	Dec. 22	67.22	Apr. 13, 1954	70.10
Jan. 25	65.22	June 5, 1945	68.81	June 2	66.96
Feb. 22	66.10	Apr. 2, 1946	70.64	July 22	62.44
Feb. 23	66.12	June 27, 1947	62.10	Aug. 23	61.36
Mar. 20	66.81	Nov. 6	64.45	Nov. 10	62.13
Apr. 24	66.31	Apr. 21, 1948	68.55	Jan. 13, 1955	65.04
May 22	66.10	Aug. 10	64.96	Mar. 10	66.92
June 19	65.23	Jan. 9, 1949	69.00	May 11	68.45
Sept. 19	66.33	Mar. 8	63.10	July 12	67.14
Oct. 22	67.19	Apr. 14	62.02	Sept. 13	66.48
Dec. 3	68.02	Aug. 28	62.93	Nov. 9	64.01
Jan. 22, 1941	68.63	Dec. 20	62.53	Jan. 11, 1956	64.99
May 27	65.43	Apr. 5, 1950	66.25	Mar. 14	67.05

KINNEY COUNTY

63. (XK-116). J. D. Harwood. Lat. $29^{\circ}27'$, long. $100^{\circ}25'$. Diameter 5 inches. Land-surface datum is 1,358.9 feet above msl.

Date	Water level	Date	Water level	Date	Water level
Apr. 13, 1938	112.55	May 27, 1941	122.23	May 15, 1951	140.00
Feb. 22, 1939	133.75	Aug. 12	115.79	Aug. 15	141.16
Apr. 11	136.30	Nov. 13	120.26	Dec. 19	139.18
May 1	136.70	Apr. 7, 1942	138.41	Mar. 14, 1952	141.55
June 13	137.92	Aug. 5	140.04	Aug. 7	131.92
July 8	138.25	Dec. 1	133.83	Sept. 13	135.15
July 15	138.15	Apr. 27, 1943	138.66	Dec. 4	139.09
Aug. 11	127.41	Aug. 29	135.08	Apr. 7, 1953	141.32
Sept. 14	130.49	Dec. 17	111.27	Aug. 11	142.07
Oct. 24	125.45	May 2, 1944	109.08	Nov. 19	134.53
Nov. 28	132.88	Aug. 17	112.28	Apr. 13, 1954	140.93
Dec. 2	133.14	June 5, 1945	138.96	June 2	124.25
Jan. 9, 1940	134.60	Apr. 2, 1946	141.64	July 14	98.68
Feb. 22	136.49	June 24	114.38	July 22	100.39
Feb. 23	136.49	Nov. 6	132.12	Aug. 23	105.45
Mar. 20	137.55	Apr. 21, 1948	139.14	Nov. 10	111.72
Apr. 25	135.66	Aug. 10	128.26	Jan. --, 1955	131.23
May 21	135.34	Jan. 9, 1949	139.37	Mar. 10	136.31
May 22	135.10	Mar. 8	94.27	May 11	138.30
July 24	120.98	Apr. 15	98.32	July 12	129.23
Aug. 21	131.90	Aug. 28	100.82	Sept. 13	133.15
Sept. 19	135.50	Dec. 20	112.86	Nov. 9	116.01
Oct. 23	137.22	Apr. 5, 1950	135.25	Jan. 11, 1956	133.58
Dec. 3	138.28	Aug. 10	136.90	Mar. 14	137.51
Jan. 22, 1941	139.16	Dec. 7	136.26		

68. S. M. Harwood. Lat. $29^{\circ}33'$, long. $100^{\circ}27'$. Depth 259 feet, diameter 6 inches. Land-surface datum is 1,408.7 feet above msl.

Apr. 14, 1938	169.23	Sept. 13, 1952	177.25	Aug. 23, 1954	167.9
Mar. 14, 1952	180.98				

78. (XK-163). Edward May. Lat. $29^{\circ}27'$, long. $100^{\circ}35'$. Depth 300 feet, diameter 6 inches. Land-surface datum is 1,246.2 feet above msl.

Apr. 23, 1938	68.99	July 15, 1939	73.55	Jan. 11, 1940	71.82
Apr. 13, 1939	71.95	Aug. 12	72.83	Mar. 19	73.01
May 1	72.41	Sept. 14	72.05	Apr. 24	73.28
June 13	73.09	Nov. 8	71.85	May 21	73.25
July 8	73.57	Dec. 4	71.36	June 18	73.08
		(Continued on next page)			

KINNEY COUNTY

78. (XK-163). - Continued

Date	Water level	Date	Water level	Date	Water level
July 23, 1940	72.64	May 26, 1941	73.48	July 12, 1955	73.38
Aug. 21	72.50	Aug. 30, 1943	72.36	Sept. 13	73.37
Sept. 19	72.92	Sept. 12, 1952	76.38	Nov. 9	70.40
Oct. 22	73.74	Dec. 3	80.31	Jan. 10, 1956	71.22
Dec. 3	74.06	Mar. 10, 1955	71.49	Mar. 14	71.97
Jan. 21, 1941	74.69	May 12	73.79		

83. G. H. Forrester. Lat. 29°24', long. 100°35'. Depth 400 feet, diameter 6 inches. Land-surface datum is 1,174.3 feet above msl.

Apr. 2, 1938	63.08	Sept. 12, 1952	173.60	Aug. 23, 1954	153.08
May 13, 1952	168.85				

89. Howard Roberts. Lat. 29°25', long. 100°40'. Depth 350 feet, diameter 6 inches. Land-surface datum is 1,117.6 feet above msl.

Apr. 20, 1938	49.42	Mar. 14, 1952	b 89.92	Aug. 23, 1954	58.80
Jan. 4, 1951	61.83	Sept. 12	69.12		

90. (XK-13). Howard Roberts. Lat. 29°23', long. 100°41'. Depth 430 feet, diameter 5 inches. Land-surface datum is 1,103.7 feet above msl.

Aug. 20, 1937	63.43	Mar. 1, 1939	58.22	Aug. 21, 1940	59.31
Sept. 26	60.09	Apr. 1	59.10	Dec. 3	60.89
Oct. 22	59.98	Apr. 29	61.74	Jan. 21, 1941	61.05
Nov. 17	60.05	June 7	56.55	May 27	62.43
Dec. 18	59.35	July 7	61.54	Aug. 12	62.43
Jan. 18, 1938	59.50	July 15	59.00	Apr. 7, 1942	66.48
Feb. 24	60.12	Aug. 14	57.65	Dec. 1	64.03
Mar. 21	61.50	Sept. 14	58.80	Aug. 30, 1943	60.23
Apr. 23	59.55	Nov. 3	58.82	Dec. 17	58.31
May 26	64.23	Dec. 4	60.01	May 3, 1944	61.70
June 29	64.86	Jan. 4, 1940	58.88	Aug. 18	63.81
July 28	59.33	Feb. 23	58.59	Dec. 23	63.26
Aug. 24	64.81	Mar. 19	57.50	June 5, 1945	b 72.73
Sept. 18	57.74	Apr. 24	62.24	Apr. 2, 1946	68.48
Oct. 28	57.66	May 21	58.41	June 24, 1947	68.02
Dec. 10	58.51	June 18	59.48	Nov. 4	64.88
Jan. 26, 1939	56.41	July 23	58.59	Apr. 20, 1948	64.00
		(Continued on next page)			

12
KINNEY COUNTY

90. (XK-13).- Continued

Date	Water level	Date	Water level	Date	Water level
Aug. 10, 1948	62.52	Dec. 19, 1951	63.10	Aug. 23, 1954	61.82
Jan. 8, 1949	a 68.27	Mar. 14, 1952	64.50	Nov. 10	58.38
Mar. 8	57.42	Aug. 7	62.01	Jan. 13, 1955	58.98
Apr. 14	57.31	Sept. 12	64.38	Mar. 11	58.19
Aug. 27	58.88	Dec. 3	65.07	May 11	60.35
Dec. 20	62.67	Apr. 7, 1953	64.23	July 12	59.64
Apr. 5, 1950	62.77	Aug. 11	67.57	Sept. 13	62.69
Aug. 10	63.19	Nov. 18	62.48	Nov. 9	59.66
Dec. 20	64.41	Apr. 12, 1954	a 71.55	Jan. 11, 1956	57.59
Jan. 4, 1951	63.10	June 2	61.97	Mar. 14	57.73
May 15	63.27	July 13	a 62.31		
Aug. 15	70.66	July 22	59.07		

100. J. F. Beidler. Lat. 29°20', long. 100°37'. Depth 1,600 feet, diameter 6 inches. Land-surface datum is 1,084.6 feet above msl.

Feb. 8, 1939	51.11	Mar. 13, 1952	49.96	Sept. 12, 1952	27.91
Jan. 4, 1951	93.82				

101. (XK-12). J. F. Beidler. Lat. 29°21', long. 100°37'. Depth 618 feet, diameter 8 inches. Land-surface datum is 1,105.2 feet above msl.

Aug. 20, 1937	18.27	July 8, 1939	28.42	Aug. 12, 1941	18.94
Sept. 26	18.90	July 22	28.12	Nov. 13	18.47
Oct. 23	18.44	Aug. 14	26.96	Apr. 7, 1942	22.05
Nov. 17	17.92	Sept. 14	26.65	Aug. 5	24.74
Dec. 18	19.09	Nov. 10	a 24.25	Dec. 1	22.40
Jan. 18, 1938	17.79	Dec. 4	23.04	Apr. 27, 1943	17.90
Feb. 24	18.44	Jan. 5, 1940	23.34	Aug. 30	19.17
Mar. 22	22.21	Feb. 23	24.24	Dec. 17	18.33
Apr. 23	19.92	Mar. 19	26.33	May 3, 1944	15.54
May 26	27.03	Apr. 24	26.22	Aug. 18	15.20
June 29	27.96	May 21	22.98	Dec. 23	15.34
July 28	27.63	June 18	23.21	June 5, 1945	17.92
Aug. 24	21.32	July 23	24.10	Apr. 2, 1946	23.61
Sept. 18	18.74	Aug. 21	23.47	June 24, 1947	5.37
Oct. 28	17.81	Sept. 19	22.65	Nov. 4	7.15
Jan. 26, 1939	16.08	Oct. 22	21.65	Apr. 20, 1948	8.11
Mar. 1	21.81	Dec. 3	21.12	Aug. 10	17.42
Apr. 1	25.41	Jan. 21, 1941	19.85	Mar. 8, 1949	15.75
June 7	27.70	May 27	20.57	Apr. 14	14.11

(Continued on next page)

13
KINNEY COUNTY

101. (XK-12).- Continued

Date	Water level	Date	Water level	Date	Water level
Aug. 27, 1949	13.57	Aug. 7, 1952	36.17	Nov. 10, 1954	29.47
Dec. 20	11.41	Sept. 12	39.17	Jan. 13, 1955	25.47
Apr. 5, 1950	27.55	Apr. 7, 1953	33.38	Mar. 11	29.06
Aug. 10	29.75	Aug. 11	40.31	May 11	42.22
Dec. 7	30.37	Nov. 18	26.28	July 11	35.18
Jan. 4, 1951	25.57	Apr. 12, 1954	37.46	Sept. 12	39.44
May 15	31.45	June 1	28.64	Nov. 10	26.24
Aug. 14	32.61	July 13	33.69	Jan. 11, 1956	28.39
Dec. 19	30.74	July 22	34.77	Mar. 13	34.18
Mar. 13, 1952	35.43	Aug. 23	37.45		

110. J. F. Beidler. Lat. 29°17', long. 100°32'. Depth 100 feet, diameter 8 inches.

Mar. 31, 1937	53.10	Apr. 13, 1954	53.63	May 12, 1955	51.72
Oct. 23, 1952	54.70	July 14	52.38	July 11	51.74
Dec. 3	55.79	July 21	52.19	Sept. 12	51.56
Apr. 7, 1953	55.53	Nov. 10	50.82	Nov. 10	50.02
Aug. 11	56.92	Jan. 12, 1955	50.72	Jan. 10, 1956	49.29
Nov. 19	57.36	Mar. 11	50.60	Mar. 13	49.26

110a. J. F. Beidler. Lat. 29°17', long. 100°28'. Depth 84 feet, diameter 10 inches.

Oct. 23, 1952	42.61	July 14, 1954	42.07	July 11, 1955	40.36
Dec. 3	42.92	July 21	40.27	Sept. 12	39.81
Apr. 7, 1953	42.56	Nov. 10	38.85	Nov. 10	38.71
Aug. 11	44.03	Jan. 12, 1955	38.64	Mar. 13, 1956	37.11
Nov. 19	43.43	Mar. 11	38.60		
Apr. 13, 1954	41.06	May 12	39.17		

110b. J. F. Beidler. Lat. 29°17', long. 100°32'.

Oct. 23, 1952	57.64	Dec. 3, 1952	57.90	Apr. 7, 1953	57.58
---------------	-------	--------------	-------	--------------	-------

KINNEY COUNTY

111. (XK-11). J. F. Beidler. Lat. 29°19', long. 100°32'. Depth 75 feet, diameter 4 inches.

Date	Water level	Date	Water level	Date	Water level
Aug. 19, 1937	29.85	Mar. 19, 1940	26.56	Jan. 8, 1949	27.36
Sept. 25	29.98	Apr. 24	26.68	Mar. 8	26.27
Oct. 23	29.62	May 21	27.14	Apr. 14	26.27
Nov. 20	28.97	June 18	27.18	Aug. 27	26.69
Dec. 18	28.41	July 23	27.02	Dec. 20	26.11
Jan. 18, 1938	27.21	Aug. 21	26.88	Apr. 5, 1950	26.63
Feb. 24	26.76	Sept. 19	27.06	Aug. 10	28.46
Mar. 21	26.65	Oct. 22	27.54	Dec. 7	27.89
Apr. 23	26.61	Dec. 3	27.24	Jan. 4, 1951	27.81
May 26	26.67	Jan. 21, 1941	27.06	May 15	28.67
July 28	26.99	May 27	27.56	Aug. 14	32.46
Aug. 24	27.02	Aug. 12	27.75	Dec. 19	32.22
Sept. 18	26.94	Nov. 13	27.19	Mar. 13, 1952	32.39
Oct. 28	19.58	Apr. 7, 1942	27.09	Aug. 7	31.27
Dec. 10	23.96	Aug. 5	31.29	Sept. 12	32.28
Jan. 26, 1939	26.91	Dec. 1	29.35	Dec. 3	35.39
Mar. 1	27.45	Dec. 17, 1943	26.92	Apr. 7, 1953	31.49
Apr. 1	27.10	May 2, 1944	20.64	Aug. 11	39.06
May 1	27.93	Aug. 17	28.17	Nov. 18	35.47
June 7	28.27	Dec. 13	26.61	Apr. 12, 1954	29.87
July 8	29.12	June 5, 1945	28.27	July 13	28.82
Aug. 14	28.04	Apr. 2, 1946	32.14	July 22	28.88
Sept. 14	28.18	June 24, 1947	27.26	Nov. 10	27.60
Nov. 15	27.31	Nov. 4	26.83	Jan. 13, 1955	26.85
Dec. 5	27.01	Apr. 21, 1948	27.29	Mar. 11	26.90
Feb. 22, 1940	26.62	Aug. 10	27.21	May 11	27.03

118. (XK-10). Jim Bader. Lat. 29°19', long. 100°29'. Depth 135 feet, diameter 5 inches.

Sept. 25, 1937	47.04	Dec. 18, 1937	56.08	Apr. 23, 1938	39.12
Oct. 23	46.45	Jan. 18, 1938	46.38		
Nov. 20	47.28	Mar. 21	40.34		

15
KINNEY COUNTY

120. (XK-198). B. Newman. Lat. 29°19', long. 100°29'. Depth 157 feet, diameter 48 to 6 inches. Land-surface datum is 1,113.7 feet above msl.

Date	Water level	Date	Water level	Date	Water level
Nov. 29, 1938	38.74	Apr. 7, 1942	45.37	Aug. 14, 1951	49.08
Jan. 26, 1939	42.17	Aug. 5	46.38	Dec. 19	45.38
Apr. 1	44.69	Dec. 1	44.89	Mar. 13, 1952	45.54
June 7	45.31	Apr. 27, 1943	44.24	Aug. 7	44.50
July 7	46.32	Dec. 17	43.84	Dec. 3	45.50
Aug. 14	44.62	May 22, 1944	43.32	Apr. 7, 1953	45.65
Sept. 13	42.57	Aug. 17	43.43	Aug. 11	47.89
Nov. 8	41.25	Dec. 22	44.33	Nov. 18	44.60
Dec. 5	40.75	June 5, 1945	45.17	Apr. 12, 1954	45.46
Jan. 15, 1940	39.98	Apr. 2, 1946	45.92	July 13	38.57
Feb. 23	41.48	June 24, 1947	37.12	July 22	38.20
Mar. 19	44.57	Nov. 5	38.89	Nov. 10	37.40
Apr. 24	44.49	Apr. 22, 1948	50.00	Jan. 13, 1955	39.56
May 21	44.48	Jan. 9, 1949	45.15	Mar. 11	44.52
June 18	45.08	Mar. 9	43.41	May 11	45.33
Aug. 21	39.94	Apr. 14	38.15	July 11	42.65
Sept. 19	41.19	Aug. 27	38.83	Sept. 12	39.96
Oct. 22	43.90	Dec. 20	38.06	Nov. 10	37.19
Dec. 3	44.97	Aug. 10, 1950	44.86	Jan. 11, 1956	38.19
Jan. 21, 1941	45.15	Dec. 7	46.55	Mar. 13	42.86
May 27	46.60	Jan. 4, 1951	45.10		
Nov. 13	45.16	May 15	46.75		

122. J. F. Beidler. Lat. 29°26', long. 100°30'. Depth 100 feet, diameter 6 inches.

Mar. 31, 1938	52.25	July 14, 1954	50.01	July 11, 1955	48.86
Dec. 3, 1952	51.60	July 21	49.81	Sept. 12	49.03
Apr. 7, 1953	50.75	Nov. 10	49.10	Nov. 10	47.98
Aug. 11	52.50	Jan. 12, 1955	48.01	Jan. 10, 1956	46.61
Nov. 19	52.13	Mar. 11	47.60	Mar. 13	46.61
Apr. 13, 1954	50.92	May 12	48.08		

16
KINNEY COUNTY

128. (XK-9). C. J. Poehler. Lat. 29°18', long. 100°27'. Depth 157 feet, diameter 6 inches.

Date	Water level	Date	Water level	Date	Water level
Aug. 20, 1937	38.61	Mar. 19, 1940	37.26	Aug. 27, 1949	35.29
Sept. 25	40.58	Apr. 24	38.14	Dec. 20	34.41
Oct. 23	41.27	May 21	38.74	Apr. 5, 1950	35.98
Nov. 16	41.70	June 18	38.42	Aug. 9	39.77
Dec. 18	41.72	July 23	38.09	Dec. 7	40.92
Jan. 18, 1938	41.09	Aug. 21	37.23	May 15, 1951	42.55
Feb. 24	39.24	Sept. 19	36.89	Aug. 14	42.85
Mar. 21	37.79	Oct. 22	37.42	Dec. 19	42.04
Apr. 23	36.38	Dec. 3	38.54	Mar. 13, 1952	42.47
May 26	34.80	Jan. 21, 1941	39.87	Aug. 7	41.37
June 29	35.03	May 27	41.34	Sept. 12	41.20
July 27	35.77	Aug. 12	37.71	Dec. 3	42.00
Aug. 24	34.17	Nov. 13	39.04	Apr. 7, 1953	43.11
Sept. 18	34.26	Apr. 7, 1942	41.66	Aug. 11	44.61
Oct. 28	35.22	Aug. 5	41.43	Nov. 18	42.38
Dec. 10	34.56	Dec. 1	39.22	Apr. 13, 1954	40.14
Jan. 26, 1939	36.49	Apr. 27, 1943	39.25	July 14	40.01
Mar. 1	37.42	Aug. 30	38.78	July 21	39.64
Apr. 1	38.20	Dec. 17	36.45	Nov. 10	34.33
May 1	39.01	May 2, 1944	38.25	Jan. 13, 1955	35.70
June 9	40.06	Aug. 17	37.93	Mar. 11	37.08
July 7	40.84	Dec. 22	37.64	May 11	38.68
Aug. 14	41.36	June 5, 1945	41.28	July 11	37.60
Sept. 13	41.31	Apr. 2, 1946	43.83	Nov. 10	35.74
Nov. 15	38.46	Nov. 5, 1947	35.09	Jan. 10, 1956	35.36
Dec. 5	37.94	Apr. 21, 1948	39.48	Mar. 13	36.34
Jan. 15, 1940	37.07	Aug. 10	39.11		
Feb. 23	36.75	Jan. 9, 1949	40.87		

137. (XK-17). John Lowrance. Lat. 29°19', long. 100°25'. Depth 600 feet, diameter 8 inches. Land-surface datum is 1,149.9 feet above msl.

Nov. 19, 1937	51.84	Aug. 12, 1939	49.87	July 23, 1940	46.92
Oct. 12, 1938	50.39	Sept. 13	50.35	Aug. 21	50.27
Jan. 26, 1939	50.38	Oct. 14	49.99	Sept. 19	50.53
Mar. 1	52.14	Dec. 2	50.12	Oct. 22	50.58
Apr. 1	50.54	Jan. 9, 1940	50.16	Dec. 3	50.55
May 1	50.63	Feb. 23	50.05	Jan. 21, 1941	50.55
June 7	50.64	Mar. 19	50.46	May 27	50.30
July 7	50.69	Apr. 24	50.30	Aug. 12	51.51
July 14	50.40	May 21	49.37	Nov. 13	50.43
July 15	50.36	June 18	49.52	Apr. 7, 1942	50.09

(Continued on next page)

17
KINNEY COUNTY

137. (XK-17).- Continued

Date	Water level	Date	Water level	Date	Water level
Aug. 5, 1942	50.25	Apr. 14, 1949	49.70	Apr. 12, 1954	50.58
Dec. 1	50.15	Aug. 27	49.67	June 1	50.02
Apr. 27, 1943	50.58	Dec. 20	50.01	July 13	51.58
Aug. 30	51.31	Apr. 4, 1950	50.17	July 22	49.81
Dec. 17	50.40	Aug. 9	50.15	Aug. 23	49.78
May 2, 1944	50.50	Dec. 7	50.22	Nov. 10	50.05
Aug. 19	50.58	Jan. 4, 1951	50.30	Jan. 11, 1955	49.91
Dec. 22	50.48	May 15	50.31	Mar. 11	50.50
June 5, 1945	50.36	Aug. 14	50.38	May 11	50.49
Apr. 2, 1946	50.32	Dec. 19	50.26	July 11	49.78
June 24, 1947	50.35	Mar. 13, 1952	50.26	Sept. 12	49.60
Nov. 5	50.24	Aug. 7	50.22	Nov. 9	49.07
Apr. 21, 1948	50.17	Sept. 12	50.42	Jan. 11, 1956	49.81
Aug. 10	49.92	Dec. 3	50.54	Mar. 13	50.81
Jan. 9, 1949	50.44	Apr. 7, 1953	51.69		
Mar. 9	49.97	Nov. 18	50.43		

138. Fritz Mussman. Lat. 29°18', long. 100°26'. Depth 233 feet, diameter 6 inches.

Sept. 25, 1937	81.68	Feb. 24, 1938	68.48	Oct. 27, 1938	62.28
Oct. 23	76.63	Apr. 25	66.87	Jan. 26, 1939	76.56
Nov. 16	88.60	May 26	65.42	Mar. 1	72.70
Dec. 18	77.45	June 29	68.85		
Jan. 18, 1938	74.26	July 27	61.36		

148. L. J. Niemeier. Lat. 29°18', long. 100°24'. Depth 183 feet, diameter 6 inches.

Aug. 19, 1937	15.66	May 26, 1938	13.08	Jan. 26, 1939	13.64
Sept. 26	16.00	June 29	13.77	Mar. 1	13.40
Nov. 16	15.69	July 27	12.92	Apr. 1	13.90
Dec. 18	14.41	Aug. 24	12.97	May 1	13.75
Feb. 24, 1938	12.72	Sept. 21	13.36	June 7	14.32
Mar. 16	12.52	Oct. 28	13.91	Aug. 15	18.72
Apr. 25	12.22	Dec. 10	15.55		

18
KINNEY COUNTY

152. (XK-199). E. Webb. Depth over 500 feet, diameter 8 inches.
Land-surface datum is 1,157.9 feet above msl. *Monthly
highest reading from recorder graph.

Date	Water level	Date	Water level	Date	Water level
Jan. 10, 1939	42.41	Apr. 30, 1941	*41.25	Aug. 9, 1950	41.16
Jan. 26	42.17	May 13	*39.12	Dec. 7	41.40
Feb. 2	*42.36	June 1	*39.40	Jan. 10, 1951	41.55
Mar. 31	*42.62	July 19	*37.47	May 15	39.8
Apr. 15	*42.57	Aug. 1	*38.22	Aug. 15	41.54
May 1	*42.62	Nov. 13	41.01	Dec. 19	41.44
June 1	*42.66	Jan. 14, 1942	41.89	Mar. 14, 1952	42.29
July 31	*40.85	Apr. 7	42.02	Aug. 7	41.30
Aug. 19	*38.80	Aug. 5	41.49	Sept. 13	42.06
Sept. 1	*38.94	Dec. 1	39.65	Apr. 7, 1953	43.48
Oct. 31	*40.10	Apr. 27, 1943	41.88	Aug. 11	42.77
Nov. 4	*40.04	Aug. 29	41.16	Nov. 19	41.49
Dec. 1	*40.15	Dec. 17	40.49	Apr. 13, 1954	42.50
Jan. 2, 1940	*40.88	May 2, 1944	40.29	June 2	41.22
Feb. 1	*41.51	Aug. 17	40.74	July 14	39.17
Mar. 1	*41.81	Dec. 22	40.81	July 22	39.34
Apr. 30	*41.08	June 5, 1945	41.58	Aug. 23	39.68
May 22	*39.13	Apr. 2, 1946	40.82	Nov. 10	40.28
June 18	*38.46	June 24, 1947	39.07	Jan. 13, 1955	41.62
July 11	*36.77	Nov. 6	39.08	Mar. 10	42.09
Aug. 1	*37.91	Apr. 21, 1948	44.80	May 11	42.29
Sept. 1	*39.51	Aug. 10	40.50	July 12	40.10
Oct. 1	*40.68	Jan. 9, 1949	43.05	Sept. 13	40.20
Nov. 1	*41.58	Mar. 8	38.80	Nov. 9	39.43
Dec. 3	*41.98	Apr. 14	38.29	Jan. 11, 1956	41.09
Jan. 1, 1941	*42.31	Aug. 27	38.65	Mar. 14	42.05
Feb. 13	*42.30	Dec. 20	39.25		
Mar. 31	*42.03	Apr. 5, 1950	40.89		

155. J. Clamp. Lat. 29°21', long. 100°23'. Depth 300⁺ feet, diameter 6 inches. Land-surface datum is 1,297.9 feet above msl.

Apr. 11, 1938	107.97	Mar. 14, 1952	123.77	Aug. 23, 1954	103.29
Jan. 12, 1951	126.09	Sept. 12	120.31		

19
KINNEY COUNTY

164. B. F. Orr. Lat. 29°17', long. 100°21'. Depth 98 feet, diameter 4 inches.

Date	Water level	Date	Water level	Date	Water level
Apr. 1, 1938	136.4	Jan. 8, 1949	40.99	Nov. 18, 1953	40.6
July 23, 1940	29.72	Apr. 14	34.87	Apr. 13, 1954	42.31
Aug. 22	30.93	Aug. 28	36.37	July 13	35.24
Sept. 20	31.81	Dec. 20	37.98	July 21	35.43
Oct. 23	32.95	Apr. 5, 1950	39.06	Nov. 11	35.02
Dec. 4	33.70	Aug. 9	40.70	Jan. 12, 1955	36.25
Jan. 21, 1941	34.42	Dec. 7	41.25	Mar. 10	37.05
Aug. 12	33.82	May 14, 1951	41.88	May 11	38.00
Nov. 13	35.56	Aug. 14	40.16	July 11	34.47
Apr. 7, 1942	37.46	Dec. 19	40.02	Sept. 12	33.91
Aug. 5	36.89	Mar. 16, 1952	41.24	Nov. 9	31.35
Dec. 1	35.94	Aug. 7	41.66	Jan. 10, 1956	33.39
Apr. 27, 1943	36.12	Dec. 4	43.38	Mar. 14	34.70
Aug. 29	33.39	Apr. 7, 1953	44.79		
June 25, 1947	39.75	Aug. 11	45.92		

165. (XK-6). B. F. Orr. Lat. 29°17', long. 100°21'. Depth 42 feet, diameter 5 inches.

Aug. 19, 1937	35.81	Jan. 26, 1939	32.85	July 23, 1940	29.61
Sept. 26	36.38	Mar. 1	33.41	Aug. 22	30.80
Oct. 23	36.74	May 1	34.45	Sept. 20	31.67
Nov. 16	36.49	June 7	34.80	Oct. 23	32.80
Dec. 20	36.46	July 7	35.25	Dec. 4	33.55
Jan. 19, 1938	35.35	Aug. 15	31.22	Jan. 21, 1941	34.30
Feb. 24	35.30	Sept. 12	31.78	May 27	33.77
Mar. 21	35.53	Oct. 24	32.80	Aug. 12	33.68
Apr. 25	32.59	Dec. 5	33.66	Nov. 13	35.42
May 26	31.70	Jan. 15, 1940	34.37	Apr. 7, 1942	37.34
June 29	32.45	Feb. 23	34.90	Aug. 5	36.76
July 27	28.35	Mar. 19	35.24	Dec. 1	35.81
Aug. 24	27.42	Apr. 24	35.53	Apr. 27, 1943	36.00
Sept. 19	28.93	May 21	35.47	Aug. 29	33.28
Dec. 10	31.91	June 18	33.05		

20
KINNEY COUNTY

171. (XK-196). John Fritter. Lat. 20°20', long. 100°20'. Depth 500 feet, diameter 6 inches. Land-surface datum is 1,225.7 feet above msl.

Date	Water level	Date	Water level	Date	Water level
Feb. 20, 1939	113.60	Feb. 23, 1940	113.53	Dec. 1, 1942	110.56
Aug. 12	115.85	Aug. 21	116.14	Jan. 12, 1951	128.52
Sept. 15	110.25	Oct. 22	111.40	Mar. 14, 1952	114.74
Dec. 2	108.15	Dec. 3	113.87	Sept. 11	125.60
Jan. 10, 1940	111.46	Jan. 22, 1941	115.37		

175. John Fritter. Lat. 29°20', long. 100°18'. Depth 200 feet, diameter 6 inches. Land-surface datum is 1,238.8 feet above msl.

Feb. 20, 1939	121.44	Mar. 14, 1952	123.63	Sept. 11, 1952	123.20
Jan. 12, 1951	124.05				

176. John Fritter. Lat. 29°19', long. 100°19'. Depth 500 feet, diameter 6 inches. Land-surface datum is 1,201.9 feet above msl.

Feb. 20, 1939	49.30	Mar. 14, 1952	103.51	Sept. 11, 1952	130.90
Jan. 12, 1951	123.80				

177. (XK-5). John Fritter. Lat. 29°16', long. 100°19'. Diameter 6 inches.

Aug. 19, 1937	26.69	June 7, 1939	25.80	Aug. 12, 1941	28.50
Sept. 26	28.61	July 7	27.82	Nov. 13	30.94
Oct. 19	29.62	Aug. 15	19.75	Apr. 7, 1942	34.65
Nov. 17	30.19	Sept. 12	21.08	Aug. 5	31.38
Jan. 10, 1938	26.58	Oct. 24	21.97	Dec. 1	31.13
Feb. 25	28.00	Dec. 6	25.16	Apr. 27, 1943	30.59
Mar. 22	29.00	Jan. 15, 1940	27.49	Aug. 30	29.81
Apr. 25	20.19	Feb. 23	29.07	Dec. 17	28.09
May 26	19.67	Mar. 19	29.90	May 2, 1944	29.68
June 29	22.31	Apr. 25	27.89	Aug. 17	32.78
July 28	17.77	May 21	22.63	Dec. 22	32.70
Aug. 24	17.79	June 19	21.05	June 6, 1945	33.95
Sept. 21	19.02	July 24	20.24	Apr. 2, 1946	37.39
Oct. 28	18.78	Aug. 22	20.59	June 25, 1947	25.48
Dec. 10	21.78	Sept. 25	23.56	Nov. 7	26.96
Jan. 26, 1939	23.31	Oct. 23	25.88	Apr. 11, 1948	33.48
Mar. 1	24.72	Dec. 4	26.34	Jan. 8, 1949	36.13
Apr. 1	26.05	Jan. 21, 1941	28.43	Apr. 14	24.92
May 1	27.51	May 27	23.55	Aug. 28	26.13
		(Continued on next page)			

21
KINNEY COUNTY

177. (XK-5).- Continued

Date	Water level	Date	Water level	Date	Water level
Dec. 20, 1949	28.40	Dec. 4, 1952	38.55	Mar. 10, 1955	32.73
Apr. 4, 1950	30.15	Apr. 7, 1953	40.03	May 11	32.46
Aug. 8	33.72	Aug. 11	43.99	July 11	24.64
Dec. 7	34.62	Nov. 18	33.20	Sept. 12	23.50
May 14, 1951	33.18	Apr. 13, 1954	36.55	Nov. 9	22.14
Aug. 14	32.80	July 14	22.99	Jan. 10, 1956	26.61
Dec. 19	33.70	July 21	23.65	Mar. 13	29.66
Mar. 13, 1952	35.88	Nov. 11	26.10		
Aug. 7	34.90	Jan. 12, 1955	30.37		

182. (XK-187). Mrs. G. A. Harrison. Lat. 29°16', long. 100°16'. Depth 514 feet, diameter 6 inches. Land-surface datum is 1,123.2 feet above msl.

Oct. 13, 1938	70.31	Dec. 4, 1940	73.89	May 14, 1951	80.37
Jan. 9, 1939	70.20	Jan. 21, 1941	74.35	Aug. 14	81.09
Jan. 26	70.64	May 21	75.68	Dec. 19	81.69
Mar. 1	70.45	Aug. 12	75.34	Mar. 13, 1952	82.30
Apr. 1	70.65	Nov. 13	76.99	Aug. 7	83.00
May 1	70.95	Apr. 7, 1942	76.62	Sept. 11	83.21
June 7	71.20	Aug. 5	78.49	Dec. 4	83.80
July 7	71.60	Dec. 1	78.58	Apr. 7, 1953	83.81
July 14	71.90	Apr. 27, 1943	79.41	Aug. 11	84.86
July 15	71.87	Aug. 29	79.60	Nov. 20	84.86
Aug. 12	71.74	May 3, 1944	80.34	Apr. 12, 1954	85.21
Sept. 12	71.90	Aug. 18	80.99	June 1	85.12
Oct. 24	71.85	Dec. 22	80.63	July 13	84.87
Dec. 2	72.17	June 6, 1945	81.91	July 21	84.68
Jan. 9, 1940	72.10	Apr. 2, 1946	82.91	Aug. 24	84.40
Jan. 10	72.08	June 25, 1947	79.47	Nov. 10	83.75
Feb. 23	72.04	Nov. 6	78.38	Jan. 12, 1955	83.28
Mar. 19	72.34	Jan. 8, 1949	81.40	Mar. 10	83.44
Apr. 25	72.58	Mar. 8	80.81	May 11	83.84
May 21	72.69	Apr. 14	80.38	July 11	83.99
June 19	73.12	Aug. 28	78.74	Sept. 12	83.79
July 24	73.16	Apr. 4, 1950	77.45	Nov. 9	83.77
Aug. 22	73.21	Aug. 8	77.48	Jan. 10, 1956	83.06
Sept. 25	73.39	Dec. 7	78.55	Mar. 13	83.01
Oct. 23	73.56	Jan. 4, 1951	78.91		

22
KINNEY COUNTY

183. G. A. Harrison. Lat. 29°20', long. 100°15'. Depth 120⁺ feet, diameter 5 inches. Land-surface datum is 1,202.2 feet above msl.

Date	Water level	Date	Water level	Date	Water level
Apr. 21, 1938	105.08	Jan. 5, 1951	118.32	Mar. 16, 1952	121.08

184. N. P. Petersen. Lat. 29°21', long. 100°14'. Depth 350 feet, diameter 6 inches. Land-surface datum is 1,304.6 feet above msl.

June 16, 1938	182.31	Mar. 15, 1952	183.10	Sept. 13, 1952	183.82
Jan. 9, 1951	181.43				

185. N. P. Petersen. Lat. 29°21', long. 100°12'. Depth 266 feet, diameter 6 inches. Land-surface datum is 1,277.9 feet above msl.

Dec. 16, 1937	202.66	Mar. 15, 1952	219.70	Aug. 24, 1954	208.13
Jan. 9, 1951	212.26	Sept. 11	217.44		

186. B. B. Dunbar. Lat. 29°21', long. 100°12'. Diameter 8 inches. Land-surface datum is 1,290.0 feet above msl.

Jan. 9, 1951	225.97	Sept. 11, 1952	232.29	Aug. 24, 1954	221.35
Mar. 15, 1952	233.28				

191. (XK-3). G. C. Earwood. Lat. 29°14', long. 100°13'. Depth 250 feet, diameter 6 inches.

Aug. 20, 1937	60.11	Feb. 24, 1938	55.99	Aug. 24, 1938	50.92
Sept. 26	61.03	Mar. 16	56.88	Sept. 21	54.38
Oct. 20	60.75	Apr. 25	53.46	Dec. 10	54.05
Nov. 17	62.43	June 29	59.86	Jan. 26, 1939	59.00
Dec. 18	63.33	July 28	44.52	Apr. 1	64.50

193. G. W. Earwood. Lat. 29°14', long. 100°11'. Depth 250 feet, diameter 6 inches.

Aug. 20, 1937	60.11	Mar. 16, 1938	56.88	Dec. 10, 1938	54.05
Sept. 26	61.13	Apr. 25	53.46	Jan. 26, 1939	59.00
Oct. 20	60.55	June 29	59.86	Apr. 1	64.50
Nov. 17	62.43	July 28	44.52	May 1	84.70
Dec. 18	63.33	Aug. 24	50.92	July 7	75.91
Feb. 24, 1938	55.99	Sept. 21	54.38		

KINNEY COUNTY

200. B. B. Dunbar. Lat. 29°21', long. 100°10'. Depth 350 feet, diameter 6 inches. Land-surface datum is 1,258.4 feet above msl.

Date	Water level	Date	Water level	Date	Water level
Dec. 16, 1937	214.56	Mar. 15, 1952	249.30	Aug. 24, 1954	190.30
Jan. 9, 1951	237.49	Sept. 11	245.68		

201. B. B. Dunbar. Lat. 29°21', long. 100°09'. Diameter 8 inches. Land-surface datum is 1,214.1 feet above msl.

Date	Water level	Date	Water level	Date	Water level
Dec. 16, 1937	202.41	Mar. 15, 1952	233.16	Aug. 24, 1954	183.49
Jan. 9, 1951	216.97	Sept. 11	231.53		

202. Dave Rose, Jr. Lat. 29°20', long. 100°09'. Depth 220 feet, diameter 5 inches. Land-surface datum is 1,150.8 feet above msl.

Date	Water level	Date	Water level	Date	Water level
Nov. 24, 1937	186.43	Mar. 15, 1952	173.77	Aug. 24, 1954	149.00
Jan. 9, 1951	158.65	Sept. 11	171.29		

203. B. B. Dunbar. Lat. 29°20', long. 100°08'. Diameter 8 inches. Land-surface datum is 1,130.5 feet above msl.

Date	Water level	Date	Water level	Date	Water level
Jan. 9, 1951	135.92	Sept. 11, 1952	148.32	Aug. 24, 1954	135.07
Mar. 15, 1952	148.20				

204. G. Rose. Lat. 29°19', long. 100°10'. Depth 435 feet, diameter 5 inches. Land-surface datum is 1,284.8 feet above msl.

Date	Water level	Date	Water level	Date	Water level
Jan. 9, 1951	222.35	Sept. 11, 1952	336.76	Aug. 24, 1954	299.36
Mar. 15, 1952	294.20				

210. (XK-1). Ethel Whitaker. Lat. 29°13', long. 100°06'. Depth 104 feet, diameter 4 inches.

Date	Water level	Date	Water level	Date	Water level
Aug. 18, 1937	57.70	Apr. 25, 1938	58.75	Dec. 9, 1938	58.27
Sept. 25	59.47	May 26	58.98	Jan. 26, 1939	59.87
Oct. 23	60.80	June 29	59.78	Mar. 1	61.40
Nov. 16	62.09	July 28	57.02	Apr. 1	62.61
Dec. 18	63.44	Aug. 24	56.00	Apr. 29	64.10
Feb. 25, 1938	60.45	Sept. 19	56.45	June 7	64.73
Mar. 16	60.22	Oct. 27	56.22	July 7	66.39
		(Continued on next page)			

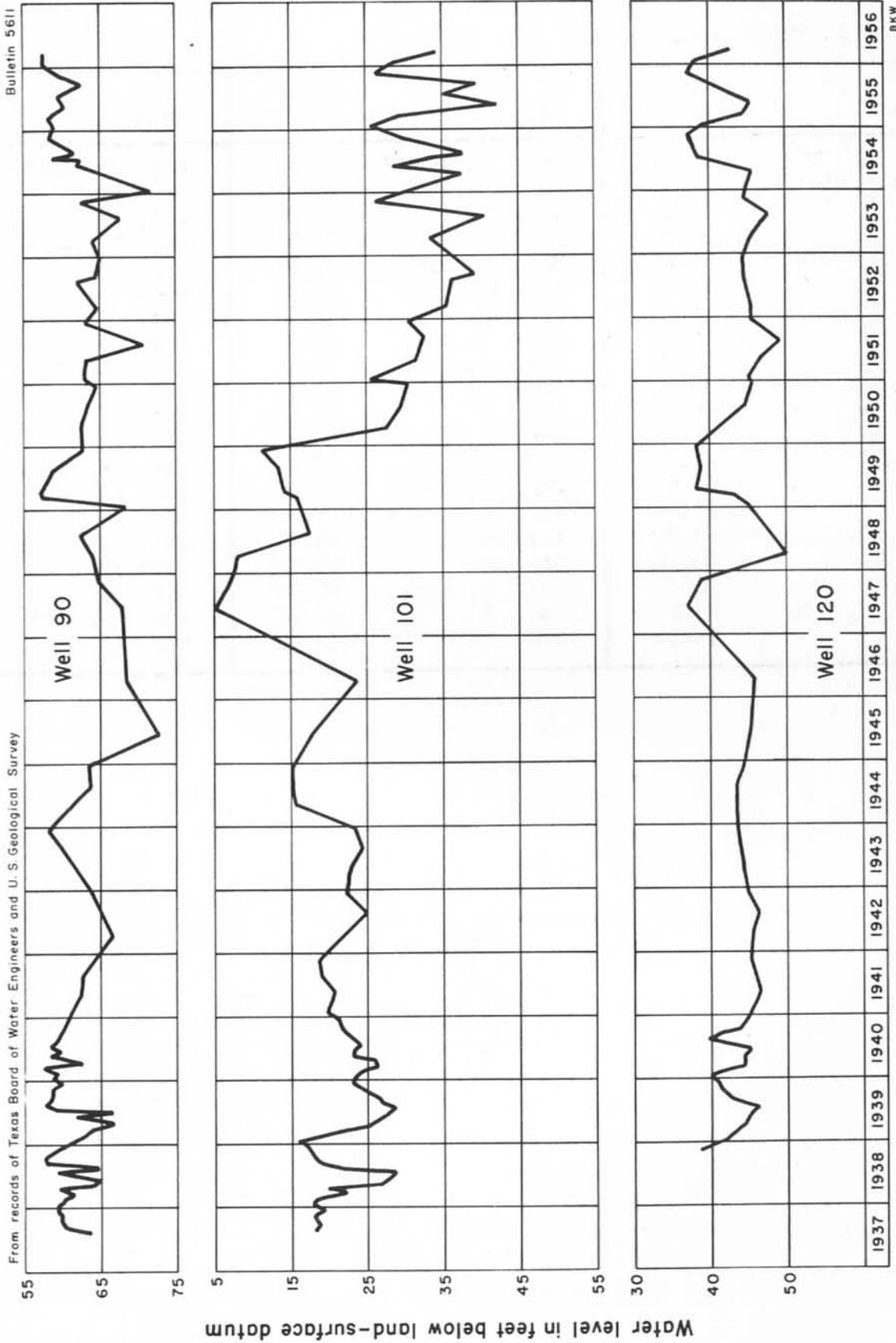
24
KINNEY COUNTY

210. (XK-1).- Continued

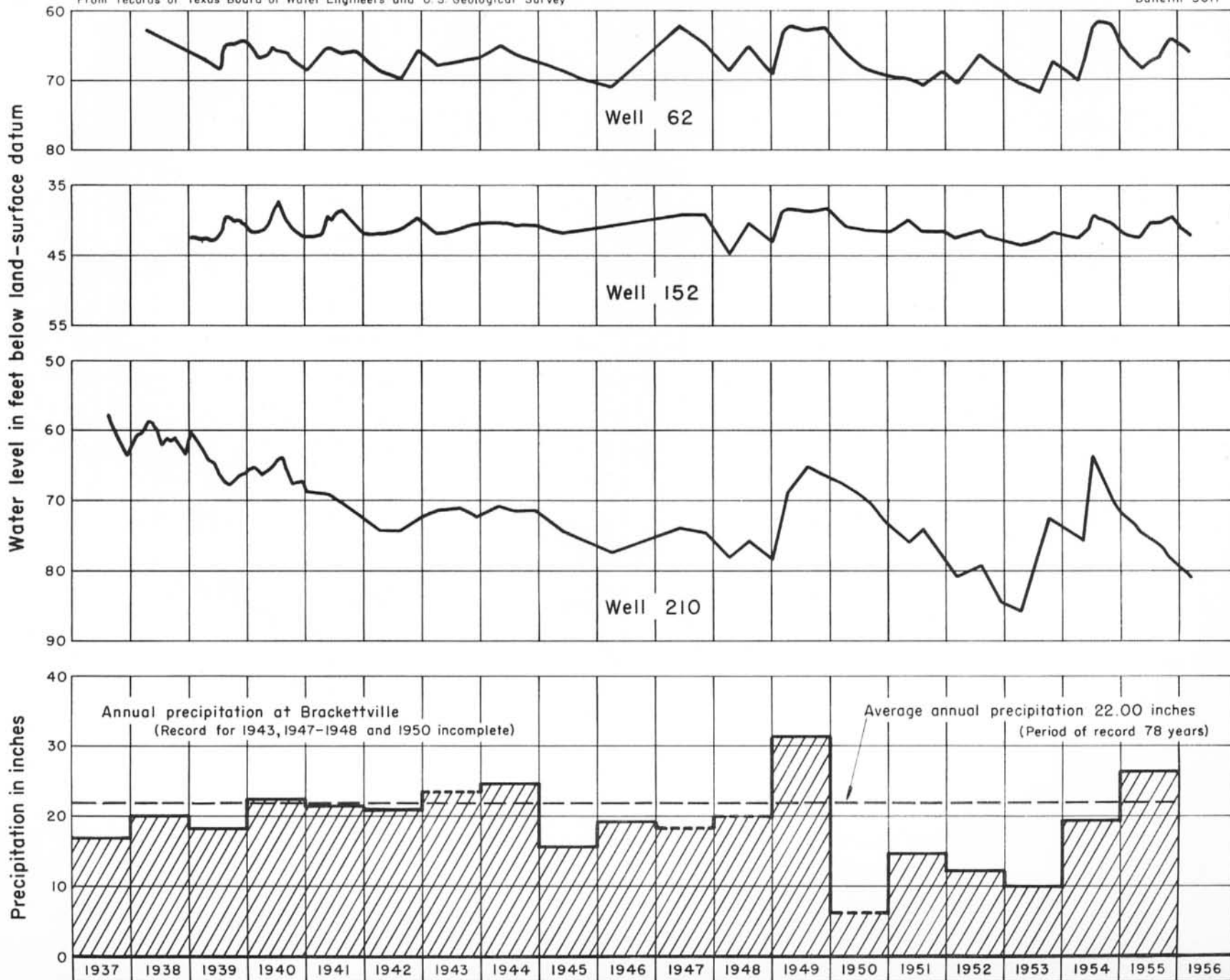
Date	Water level	Date	Water level	Date	Water level
Aug. 15, 1939	67.52	Dec. 2, 1942	72.49	May 14, 1951	75.80
Sept. 12	67.80	Apr. 27, 1943	71.33	Aug. 14	74.03
Nov. 10	66.75	Aug. 29	70.85	Dec. 19	77.83
Dec. 2	66.23	Dec. 17	72.36	Mar. 13, 1952	80.75
Jan. 15, 1940	65.17	May 2, 1944	70.87	Aug. 6	79.25
Feb. 23	65.23	Aug. 18	71.38	Dec. 4	84.51
Mar. 19	65.71	Dec. 22	71.40	Apr. 7, 1953	85.90
Apr. 24	66.04	June 5, 1945	74.27	Nov. 20	72.41
May 21	65.54	Apr. 2, 1946	77.41	Apr. 21, 1954	75.70
June 19	65.01	June 25, 1947	73.91	July 13	63.51
July 24	64.06	Nov. 6	74.16	July 21	64.34
Aug. 22	63.80	Apr. 21, 1948	77.97	Nov. 10	70.14
Sept. 25	65.54	Aug. 10	75.62	Jan. 12, 1955	71.85
Oct. 23	67.43	Jan. 9, 1949	78.28	Mar. 10	73.01
Dec. 4	67.03	Apr. 14	68.94	May 11	74.64
Jan. 21, 1941	68.82	Aug. 29	64.95	July 11	75.26
May 28	69.12	Dec. 20	66.17	Sept. 12	76.71
Aug. 12	70.34	Apr. 4, 1950	67.74	Nov. 9	78.41
Apr. 7, 1942	74.20	Aug. 8	69.82	Jan. 10, 1956	79.68
Aug. 5	74.36	Dec. 7	72.89	Mar. 13	80.97

a Pumping.

b Pumped recently.



Hydrographs of water levels in wells in Kinney County, Tex.



Hydrographs of water levels in wells, Kinney County and annual precipitation at Brackettville, Tex

Vertical axis label, possibly 'Time' or 'Depth', oriented vertically on the left side of the page.



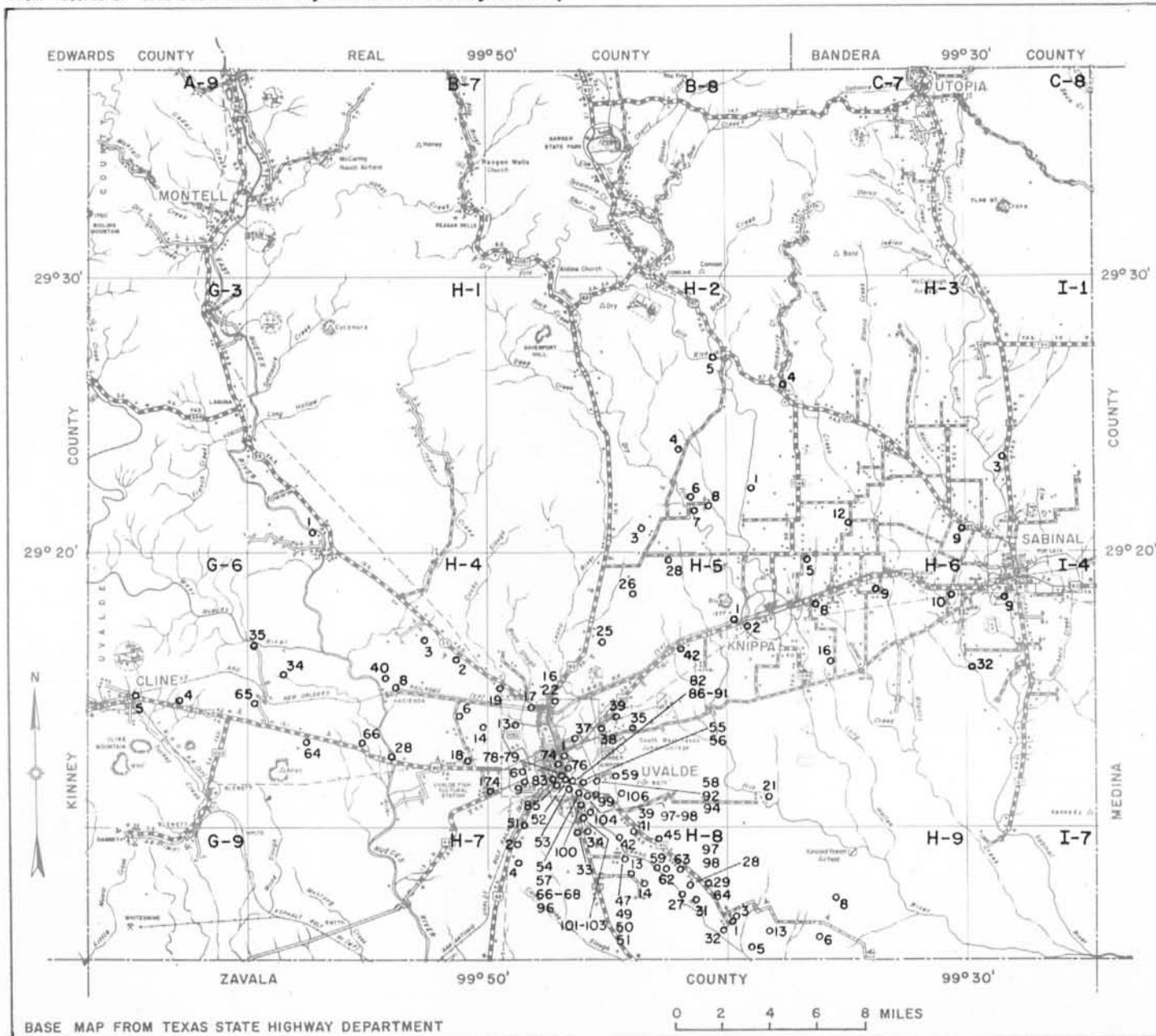
Caption for the first plot, possibly describing the step function.

Caption for the second plot, possibly describing the jagged waveform.

UVALDE COUNTY

UVALDE COUNTY, TEXAS
COUNTY CLERK'S OFFICE

UVALDE COUNTY, TEXAS
COUNTY CLERK'S OFFICE



28

OBSERVATION WELLS IN UVALDE COUNTY, TEXAS
MARCH 1956

BKW

WATER LEVEL MEASUREMENTS IN UVALDE COUNTY, TEXAS

G-6-4. (XU-9). Frank Kirchgraber. Lat. 29°14', long. 100°02'. Depth 120 feet, diameter 6 inches.

Date	Water level	Date	Water level	Date	Water level
Aug. 18, 1937	44.33	Feb. 23, 1940	55.76	Nov. 7, 1947	62.07
Sept. 25	48.00	Mar. 20	55.68	Apr. 21, 1948	65.95
Oct. 23	48.64	Apr. 24	55.41	Jan. 8	65.46
Nov. 17	49.69	May 21	55.04	Apr. 14	56.94
Dec. 16	50.35	June 18	55.07	Aug. 29	57.39
Jan. 19, 1938	51.78	July 23	55.48	Dec. 20	57.92
Feb. 25	48.57	Aug. 22	55.51	Apr. 4, 1950	58.16
Mar. 19	52.06	Sept. 25	56.71	Aug. 8	59.68
Apr. 25	49.97	Oct. 23	56.86	Dec. 7	62.02
May 26	50.17	Dec. 4	56.33	May 14, 1951	64.28
June 29	51.79	Jan. 21, 1941	56.50	Aug. 14	64.68
July 28	48.71	May 28	56.35	Dec. 19	69.57
Aug. 24	49.35	Aug. 12	57.18	Aug. 6, 1952	71.13
Sept. 19	48.68	Nov. 13	58.62	Dec. 5	74.13
Oct. 27	48.54	Apr. 7, 1942	60.53	Apr. 8, 1953	77.78
Dec. 9	48.42	Aug. 5	62.21	Nov. 20	61.76
Jan. 26, 1939	48.70	Dec. 2	60.26	July 13, 1954	54.86
Mar. 1	49.48	Apr. 27, 1943	61.35	July 21	56.63
Apr. 1	50.44	Aug. 30	60.67	Nov. 10	58.42
Apr. 29	51.95	Dec. 16	60.12	Jan. 12, 1955	59.35
June 7	53.10	May 1, 1944	58.95	Mar. 10	60.29
July 7	54.20	Aug. 17	59.72	May 11	61.36
Aug. 15	54.70	Dec. 21	60.26	July 11	62.18
Sept. 12	55.25	June 6, 1945	61.55	Nov. 10	66.26
Oct. 24	54.30	Apr. 2, 1946	66.09	Jan. 10, 1956	67.61
Jan. 15, 1940	55.89	June 25, 1947	52.58		

G-6-5. (XU-10). Southern Pacific Lines. Lat. 29°14', long. 100°04'. Depth 68 feet, diameter, 10 feet, dug well.

Aug. 18, 1937	30.19	July 27, 1938	31.94	Aug. 15, 1939	39.42
Sept. 25	31.77	Aug. 24	29.98	Sept. 12	39.80
Oct. 23	32.96	Sept. 19	29.92	Oct. 24	39.32
Nov. 17	34.33	Oct. 27	29.86	Jan. 15, 1940	37.70
Dec. 16	35.49	Dec. 9	31.40	Feb. 23	37.65
Jan. 19, 1938	35.01	Jan. 26, 1939	32.26	Mar. 19	38.16
Feb. 24	33.29	Mar. 1	33.70	Apr. 24	38.39
Mar. 16	32.97	Apr. 1	34.88	May 21	38.05
Apr. 25	32.03	Apr. 29	36.27	June 19	37.72
May 26	31.78	June 7	36.64	July 23	37.51
June 29	32.50	July 7	38.52	Sept. 25	38.45

(Continued on next page)

30
UVALDE COUNTY

G-6-5. (XU-10). - Continued

Date	Water level	Date	Water level	Date	Water level
Oct. 23, 1940	39.63	June 25, 1947	45.74	Apr. 8, 1953 a	63.98
Dec. 4	39.00	Nov. 6	46.70	Aug. 12	61.74
Jan. 21, 1941	40.30	Apr. 22, 1948	49.45	Nov. 20	44.75
May 28	40.67	Aug. 10	47.44	Apr. 12, 1954	47.30
Aug. 12	41.98	Jan. 8, 1949	49.70	July 13	39.03
Nov. 13	43.41	Apr. 14	42.51	July 21	39.20
Apr. 7	45.29	Aug. 29	38.76	Nov. 10	42.04
Aug. 5	45.53	Dec. 20	38.93	Jan. 12, 1955	43.50
Dec. 2	43.90	Apr. 4, 1950	40.14	Mar. 10	44.48
Aug. 29, 1943	42.86	Aug. 8	41.96	May 9	46.07
Dec. 16	44.37	Dec. 7	45.94	July 11	47.11
May 1, 1944	42.68	May 14, 1951	48.47	Sept. 13	48.23
Aug. 16	43.20	Aug. 14	47.49	Nov. 9	49.85
Dec. 21	44.64	Dec. 19	50.96	Jan. 10, 1956	51.17
June 5, 1945	45.61	Mar. 13, 1952	51.97	Mar. 13	52.46
Apr. 2, 1946	49.88	Aug. 6	53.07		
Apr. 3	48.82	Dec. 5	56.40		

H-1-1. Arlie Crump. Lat. 29°20', long. 99°57'. Depth 232 feet, diameter 10 inches, cased to 84 feet.

Feb. 11, 1954	47.6	Jan. 14, 1955	43.64	Sept. 14, 1955	54.87
Apr. 15	48.37	Mar. 9	43.66	Nov. --	40.63
Aug. 25	41.92	May 12	44.56	Jan. 11, 1956	40.59
Nov. 11	43.41	July 15	b 65.96	Mar. 15	59.03

H-2-3. C. L. Farrish. Lat. 29°20', long. 99°43'. Depth 386 feet, diameter 6 inches.

Mar. 11, 1952	265.0	July 8, 1952	276.77	Aug. 25, 1954	286.05
---------------	-------	--------------	--------	---------------	--------

H-2-4. H. I. Holmes. Lat. 29°23', long. 99°42'. Diameter 6 inches. Land-surface datum is 1,153.6 feet above msl.

Nov. 30, 1929	183.74	June 24, 1930	182.15	May 14, 1931	137.60
Dec. 24	184.60	July 23	178.80	July 11	130.50
Jan. 20, 1930	185.30	Sept. 30	177.9	Oct. 30	126.40
Mar. 13	186.26	Oct. 22	175.9	Jan. 14, 1932	131.30
May 21	187.9	Dec. 19	170.80	Feb. 16	129.90
(Continued on next page)					

H-2-4.- Continued

Date	Water level	Date	Water level	Date	Water level
Apr. 1, 1932	130.70	Jan. 22, 1941	152.25	Dec. 6, 1950	167.56
July 8	126.60	May 28	131.72	Jan. 5, 1951	170.01
Nov. 30	113.01	Aug. 11	125.47	May 8	177.56
Apr. 10, 1933	116.00	Nov. 14	119.82	Aug. 16	178.76
July 19	120.85	Aug. 6, 1942	129.04	Dec. 19	184.46
Oct. 16, 1934	151.71	Dec. 2	124.72	Mar. 11, 1952	188.03
Aug. 12, 1935	136.08	Apr. 28, 1943	131.42	Aug. 6	188.78
Jan. 28, 1936	121.10	Aug. 28	139.53	Sept. 8	189.58
Aug. 21	a 125.3	Dec. 16	148.67	Dec. 5	193.21
July 7, 1937	123.96	Apr. 30, 1944	150.07	Apr. 8, 1953	199.66
Aug. 10	125.81	Aug. 16	145.03	Aug. 12	208.63
Sept. 22, 1938	131.62	Dec. 20	143.17	Nov. 24	207.63
Apr. 8, 1939	145.88	June 6, 1945	132.43	Apr. 15, 1954	209.55
Aug. 1	148.60	Apr. 3, 1946	153.24	June 3	207.19
Oct. 25	146.77	July 1, 1947	143.82	July 15	205.50
Jan. 16, 1940	148.45	Nov. 7	145.33	July 23	205.54
Feb. 24	149.83	Apr. 22, 1948	158.48	Aug. 25	203.28
Mar. 20	150.64	Aug. 9	167.86	Nov. 11	202.42
Apr. 25	151.06	Jan. 7, 1949	178.38	Jan. 14, 1955	205.83
May 22	150.60	Apr. 14	168.75	Mar. 4	208.86
June 19	149.04	Aug. 29	147.12	May 10	210.98
July 24	146.75	Nov. 2	146.90	July 13	211.57
Aug. 22	146.90	Dec. 19	147.56	Sept. 14	212.49
Sept. 26	148.39	Jan. 24, 1950	148.27	Nov. 10	212.48
Oct. 23	149.96	Apr. 4	150.70	Jan. 13, 1956	213.09
Dec. 4	154.81	Aug. 8	153.59	Mar. 15	214.03

H-2-5. Mrs. W. E. Fitzgerald. Lat. 29°27', long. 99°40'. Depth 100 feet, diameter 5 inches. Land-surface datum is 1,174.8 feet above msl.

Nov. 30, 1929	88.37	Oct. 30, 1931	55.75	July 7, 1937	55.75
Jan. 20, 1930	61.44	Jan. 14, 1932	59.45	Sept. 22, 1938	84.00
Mar. 13	83.90	Feb. 16	58.55	Apr. 8, 1939	71.40
May 21	60.90	Apr. 1	57.30	Aug. 1	52.49
June 24	62.50	Nov. 30	53.05	Oct. 25	65.75
July 23	69.85	Apr. 10, 1933	56.30	Jan. 16, 1940	55.81
Aug. 28	79.70	July 19	56.50	Feb. 24	55.40
Sept. 30	b 91.75	Oct. 16, 1934	93.12	Mar. 20	55.28
Oct. 22	52.16	Aug. 12, 1935	45.95	Apr. 25	54.21
Dec. 19	56.25	Jan. 28, 1936	55.85	May 22	53.15
July 11, 1931	53.80	Aug. 21	55.95	June 19	53.60

(Continued on next page)

32
UVALDE COUNTY

H-2-5.- Continued

Date	Water level	Date	Water level	Date	Water level
July 24, 1940	53.86	Apr. 3, 1946	64.27	Mar. 11, 1952	94.18
Aug. 22	56.06	July 1, 1947	46.50	Aug. 6	92.09
Sept. 26	65.11	Nov. 7	87.86	Sept. 8	94.20
Oct. 23	87.94	Apr. 22, 1948	81.80	Dec. 5	95.61
Dec. 4	56.71	Aug. 9	90.60	Apr. 8, 1953	95.73
Jan. 22, 1941	53.88	Jan. 7, 1949	92.94	Aug. 12	97.00
May 28	40.70	Mar. 8	48.98	Nov. 24	93.93
Aug. 11	51.70	Apr. 14	55.95	Apr. 15, 1954	97.69
Nov. 14	47.37	Aug. 29	55.30	June 3	68.20
Apr. 8, 1942	56.07	Nov. 2	55.15	July 15	59.75
Aug. 6	60.40	Dec. 19	57.54	July 22	60.34
Dec. 2	52.41	Jan. 24, 1950	57.16	Mar. 9, 1955	87.51
Apr. 28, 1943	55.38	Apr. 4	57.49	May 10	87.74
Aug. 28	88.68	Aug. 8	87.17	July 13	85.79
Dec. 16	62.22	Dec. 6	92.00	Sept. 14	85.88
Apr. 30, 1944	50.81	Jan. 5, 1951	91.86	Nov. 10	85.61
Aug. 16	83.76	May 8	80.02	Jan. 13, 1956	87.23
Dec. 20	52.68	Aug. 16	91.89	Mar. 15	87.80
June 6, 1945	51.79	Dec. 19	94.27		

H-2-6. L. L. Gilleland. Lat. 29°23', long. 99°41'. Depth 270 feet, diameter 6 inches. Land-surface datum is 1,073.7 feet above msl.

Dec. 3, 1929	210.6	Sept. 10, 1952	215.05	Aug. 25, 1954	243.28
Mar. 11, 1952	211.30				

H-2-7. L. L. Gilleland. Lat. 29°21', long. 99°41'. Depth 250 feet, diameter 6 inches.

Dec. 3, 1929	220.3	Sept. 10, 1952	225.87	Aug. 25, 1954	238.92
Mar. 11, 1952	221.55				

H-2-8. F. C. Brignan. Lat. 29°21', long. 99°40'. Depth 300 feet, diameter 6 inches. Land-surface datum is 1,072.6 feet above msl.

Dec. 3, 1929	235.09	Sept. 21, 1938	158.38	Apr. 25, 1940	195.22
Jan. 20, 1930	236.6	Oct. 25, 1939	165.45	May 22	194.40
Nov. 30, 1932	151.95	Jan. 16, 1940	190.31	June 19	196.7
Aug. 21, 1936	153.3	Feb. 24,	192.43	Dec. 4	199.16
Aug. 11, 1937	151.20	Mar. 20	193.67	Jan. 22, 1941	200.57

33
UVALDE COUNTY

H-3-1. G. C. Sanderlin. Lat. 29°22', long. 99°39'. Depth 440 feet, diameter 6 inches. Land-surface datum is 1,068.8 feet above msl.

Date	Water level	Date	Water level	Date	Water level
Mar. 11, 1952	326.4	Sept. 10, 1952	329.64	Aug. 26, 1954	338.88

H-3-4. -- Rimkus. Lat. 29°25', long. 99°37'. Diameter 6 inches. Land-surface datum is 1,131.3 feet above msl.

Dec. 3, 1929	232.73	Dec. 19, 1930	232.70	Oct. 16, 1934	236.40
Dec. 23	232.74	May 14, 1931	232.60	Aug. 12, 1935	236.20
Jan. 27, 1930	232.86	July 11	224.90	Jan. 28, 1936	235.48
Mar. 13	234.23	Oct. 29	236.80	Aug. 21	242.51
May 21	232.7	Jan. 14, 1932	235.35	July 7, 1937	236.36
June 24	237.20	Feb. 16	236.00	Aug. 10	271.10
July 23	250.40	July 9	236.45	Sept. 22, 1938	252.39
Aug. 28	233.00	Nov. 30	204.20	Jan. 5, 1951	235.73
Sept. 30	232.75	Apr. 10, 1933	235.60		
Oct. 22	236.05	July 19	252.10		

H-3-9. H. M. Waldrip. Lat. 29°20', long. 99°30'. Diameter 8 inches. Land-surface datum is 997.5 feet above msl.

Dec. 10, 1929	174.22	Aug. 21, 1936	135.05	Sept. 22, 1938	159.44
Aug. 12, 1935	125.04	July 7, 1937	110.83		
Jan. 28, 1936	110.70	Aug. 10	195.02		

H-3-12. Lat. 29°21', long. 99°35'. Diameter 6 inches. Land-surface datum is 1,010.7 feet above msl.

Dec. 11, 1929	262.20	July 23, 1930	260.70	Oct. 30, 1931	245.55
Jan. 27, 1930	263.42	Aug. 28	261.65	Jan. 14, 1932	248.60
Mar. 13	263.25	Dec. 19	276.9	Feb. 16	249.60
Apr. 10	263.45	Apr. 15, 1931	259.10	Oct. 23, 1934	274.83
May 21	264.03	May 14	246.40		
June 24	256.20	July 11	247.40		

H-4-2. E. Gray. Lat. 29°16', long. 99°51'. Depth 206 feet, diameter 6 inches. Land-surface datum is 983.8 feet above msl.

Nov. 22, 1929	115.55	Mar. 10, 1952	117.80	Aug. 25, 1954	115.68
---------------	--------	---------------	--------	---------------	--------

UVALDE COUNTY

H-4-3. -- Harper. Lat. 29°16', long. 99°52'. Diameter 6 inches. Land-surface datum is 1,009.5 feet above msl.

Date	Water level	Date	Water level	Date	Water level
Nov. 22, 1929	139.5	Mar. 10, 1952	147.0	Sept. 10, 1952	154.36

H-4-6. Briscoe, Fenley, and Spangler. Lat. 29°14', long. 99°51'. Depth 100+ feet, diameter 8 inches. Land-surface datum is 950.6 feet above msl.

Oct. 7, 1929	81.55	Aug. 1, 1939	a 66.95	Dec. 19, 1949	65.30
Nov. 14	82.65	Jan. 15, 1940	63.85	Jan. 24, 1950	65.56
Dec. 7	83.83	Feb. 24	65.25	Apr. 4	67.25
Jan. 16, 1930	85.73	Mar. 18	65.71	Aug. 8	70.84
Mar. 10	87.12	Apr. 26	66.29	Dec. 6	73.85
May 22	89.0	May 22	66.34	Jan. 4, 1951	77.28
June 23	84.50	June 19	65.53	May 14	82.02
July 22	80.00	Aug. 22	66.30	Aug. 15	86.35
Aug. 29	83.00	Sept. 26	67.60	Dec. 19	92.30
Sept. 29	82.35	Oct. 23	68.62	Mar. 12, 1952	96.90
Oct. 22	79.10	Dec. 2	69.89	Aug. 6	98.58
Nov. 25	75.70	Jan. 23, 1941	70.76	Sept. 10	103.98
Dec. 17	75.10	May 26	65.33	Dec. 5	104.60
Apr. 15, 1931	69.95	Aug. 11	62.74	Apr. 8, 1953	110.69
May 14	67.95	Nov. 12	62.06	Aug. 12	120.82
Oct. 29	65.60	Apr. 8, 1942	63.68	Nov. 23	106.22
Jan. 14, 1932	66.65	Aug. 6	66.15	Apr. 13, 1954	113.15
Feb. 16	67.05	Dec. 2	62.69	June 2	108.26
Apr. 1	67.30	May 1, 1944	70.69	July 15	97.08
Nov. 30	59.70	June 6, 1945	a 68.65	July 22	95.88
Apr. 10, 1933	59.05	Apr. 2, 1946	76.75	Aug. 25	96.94
July 18	60.70	July 1, 1947	67.22	Nov. 11	101.37
Oct. 16	73.61	Nov. 7	68.85	Jan. 14, 1955	104.75
Aug. 12, 1935	63.99	Apr. 21, 1948	73.11	Mar. 9	107.36
Jan. 27, 1936	59.90	Aug. 9	73.05	May 12	111.66
Aug. 20	a 69.0	Jan. 8, 1949	79.80	July 12	112.58
July 7, 1937	59.10	Mar. 9	76.32	Sept. 14	114.36
Aug. 21	60.04	Apr. 14	71.19	Nov. 10	99.24
Sept. 19, 1938	a 61.68	Aug. 29	67.00	Jan. 12, 1956	100.55
Apr. 8, 1939	66.40	Nov. 2	65.52	Mar. 15	104.22

35
UVALDE COUNTY

H-4-8. J. T. Hall. Lat. 29°14', long. 99°53'. Depth 135 feet, diameter 8 inches. Land-surface datum is 938.3 feet above msl.

Date	Water level	Date	Water level	Date	Water level
Oct. 9, 1929	63.60	Aug. 4, 1930	59.65	Apr. 10, 1933	36.40
Nov. 23	65.90	Aug. 27	62.50	July 18	39.60
Dec. 5	66.95	Sept. 29	64.90	Oct. 15, 1934	56.62
Jan. 8, 1930	69.10	Oct. 22	45.58	Aug. 12, 1935	36.83
Feb. 6	70.15	May 13, 1931	39.34	Jan. 27, 1936	36.48
Mar. 10	71.09	July 10	39.84	Aug. 20	36.93
Apr. 5	71.85	Oct. 29	44.68	July 7, 1937	38.22
May 4	72.85	Jan. 13, 1932	47.14	Aug. 21	39.42
June 9	73.74	Feb. 16	47.73	Sept. 19, 1938	39.08
June 23	47.71	Apr. 1	47.90		
July 2	46.69	Dec. 1	35.85		

H-4-14. B. B. Dunbar or H. E. Stoy. Lat. 29°13', long. 99°50'. Depth 400 feet, diameter 8 inches. Land-surface datum is 938.3 feet above msl.

Oct. 7, 1929	81.9	Sept. 10, 1952	104.23	Aug. 25, 1954	101.50
Mar. 10, 1952	100.94				

H-4-18. -- Witts. Lat. 29°12', long. 99°50'. Depth 250 feet, diameter 6 inches. Land-surface datum is 924.9 feet above msl.

Oct. 7, 1929	89.90	Sept. 30, 1930	90.00	July 8, 1932	73.00
Nov. 14	90.20	Oct. 22	90.25	Dec. 1	89.55
Dec. 7	89.86	Nov. 25	89.95	Apr. 10, 1933	72.85
Jan. 17, 1930	89.89	Dec. 17	90.20	July 18	90.40
Feb. 14	89.87	May 14, 1931	82.40	Oct. 15, 1934	80.03
Mar. 10	89.93	July 11	85.35	Aug. 12, 1935	80.90
June 23	90.35	Jan. 13, 1932	141.30	Jan. 27, 1936	78.70
July 22	89.80	Feb. 16	86.10		
Aug. 29	90.10	Apr. 1	90.90		

H-4-28. J. R. Ingraham. Lat. 29°12', long. 99°54'. Diameter 5 inches. Land-surface datum is 897.0 feet above msl.

Oct. 3, 1929	28.50	Feb. 14, 1930	33.72	July 22, 1930	23.25
Nov. 14	29.75	Mar. 10	34.22	Aug. 29	27.90
Dec. 7	31.18	May 22	36.0	Sept. 30	29.40
Jan. 16, 1930	32.70	June 23	18.05	Oct. 22	19.05

(Continued on next page)

36
UVALDE COUNTY

H-4-28.- Continued

Date	Water level	Date	Water level	Date	Water level
Nov. 25, 1930	21.90	July 27, 1938	12.56	Aug. 12, 1941	15.62
Dec. 17	24.90	Aug. 23	14.12	Nov. 13	13.58
May 14, 1931	15.90	Sept. 19	16.00	Apr. 7, 1942	19.40
July 10	17.60	Oct. 27	17.90	Aug. 5	20.90
Oct. 29	21.10	Dec. 9	19.02	Dec. 2	13.82
Jan. 13, 1932	22.80	Jan. 26, 1939	19.83	Apr. 27, 1943	19.93
Feb. 16	23.05	Mar. 1	20.23	Aug. 29	21.09
Mar. 31	23.20	Apr. 1	20.57	Dec. 16	22.91
July 8	13.00	Apr. 29	20.87	May 1, 1944	22.69
Dec. 1	12.53	June 7	21.38	Aug. 17	23.01
Apr. 10, 1933	13.75	July 8	21.87	Dec. 21	21.88
July 18	17.85	Aug. 15	17.00	June 5, 1945	21.94
Aug. 11, 1935	11.22	Sept. 14	17.72	Apr. 2, 1946	25.18
Jan. 27, 1936	13.15	Oct. 24	13.37	June 26, 1947	20.23
Aug. 20	13.50	Jan. 15, 1940	18.18	Nov. 7	21.31
July 7, 1937	16.26	Feb. 23	19.37	Apr. 21, 1948	23.73
Aug. 21	16.92	Mar. 20	19.86	Aug. 9	19.23
Sept. 25	18.26	Apr. 24	20.29	Jan. 7, 1949	26.15
Oct. 19	18.78	May 21	20.54	Apr. 14	13.86
Nov. 16	16.65	June 18	18.14	Aug. 29	12.88
Dec. 16	19.86	July 24	18.69	Dec. 20	16.45
Jan. 19, 1938	18.41	Aug. 22	19.91	Apr. 4, 1950	19.98
Feb. 25	12.78	Sept. 23	20.87	Aug. 8	22.33
Mar. 16	13.91	Oct. 23	21.44	Dec. 7	24.17
Apr. 25	14.39	Dec. 4	22.01	May 14, 1951	27.78
May 26	12.90	Jan. 21, 1941	22.44	Aug. 14	31.15
June 28	15.48	May 28	12.09		

H-4-34. John Rosenow. Lat. 29°15', long. 99°58'. Depth 593 feet, diameter 10 inches. Land-surface datum is 1,082.5 feet above msl.

Mar. 22, 1939	162.20	Jan. 21, 1941	169.00	Dec. 21, 1944	166.32
Jan. 9, 1940	157.00	May 28	161.43	June 5, 1945	170.56
Feb. 24	159.48	Aug. 12	156.77	Apr. 2, 1946	179.51
Mar. 19	160.59	Nov. 13	157.78	July 1, 1947	158.28
Apr. 24	162.09	Aug. 5, 1942	179.32	Nov. 7	164.12
May 21	161.94	Dec. 2	159.81	Apr. 21, 1948	172.58
June 18	158.44	Apr. 27, 1943	167.21	Aug. 10	169.50
July 23	157.88	Aug. 29	168.92	Jan. 7, 1949	174.30
Aug. 22	160.58	Dec. 16	171.94	Mar. 8	164.60
Sept. 25	163.13	May 1, 1944	170.81	Apr. 14	160.96
Oct. 23	165.10	Aug. 17	170.19	Aug. 29	157.44

(Continued on next page)

37
UVALDE COUNTY

H-4-34.- Continued

Date	Water level	Date	Water level	Date	Water level
Nov. 2, 1949	156.01	Aug. 6, 1952	201.0	Nov. 11, 1954	186.00
Dec. 20	156.28	Dec. 5	189.39	Jan. 14, 1955	a 201.48
Jan. 24, 1950	156.21	Apr. 8, 1953	202.3	Mar. 10	190.82
Apr. 4	159.90	Aug. 12	209.32	May 12	194.50
Aug. 8	168.36	Nov. 20	174.02	July 12	207.53
Dec. 7	172.95	Apr. 13, 1954	197.52	Nov. 10	192.16
Jan. 5, 1951	174.10	June 2	174.90	Jan. 10, 1956	188.15
May 14	180.98	July 14	174.91	Mar. 14	204.05
Aug. 14	183.99	July 22	182.33		
Mar. 13, 1952	187.14	Aug. 25	183.45		

H-4-35. John Rosenow. Lat. 29°16', long. 99°59'. Depth 100 feet, diameter 6 inches. Land-surface datum is 1,006.5 feet above msl.

Mar. 22, 1939	62.60	Nov. 13, 1941	58.17	May 14, 1951	85.36
Feb. 24, 1940	58.54	Dec. 2, 1942	62.57	Aug. 14	88.79
Mar. 19	59.62	Aug. 29, 1943	73.94	Mar. 13, 1952	95.44
Apr. 24	60.63	May 1, 1944	74.54	Dec. 5	97.05
May 21	61.36	Aug. 17	74.26	Aug. 12, 1953	102.63
June 18	60.29	June 5, 1945	73.63	Nov. 20	95.64
July 23	59.33	July 1, 1947	56.64	Aug. 25, 1954	87.65
Sept. 25	67.60	Nov. 7	70.08	Jan. 14, 1955	87.39
Oct. 23	66.90	Apr. 21, 1948	72.00	Mar. 10	90.00
Dec. 4	69.69	Nov. 2, 1949	55.92	July 12	90.35
Jan. 21, 1941	72.19	Apr. 4, 1950	60.35	Sept. 13	91.3-
May 28	61.69	Dec. 7, 1951	75.40	Mar. 14, 1956	85.50

H-4-40. Joe Moss. Lat. 29°14', long. 99°54'. Depth 606 feet, diameter 6 to 8 inches.

Feb. 10, 1954	110.93	Jan. 15, 1955	100.66	Nov. 10, 1955	87.13
Apr. 13	111.19	Mar. 9	103.35	Jan. 12, 1956	95.26
June 2	89.61	May 12	107.10	Mar. 15	98.97
July 15	73.52	Sept. 14	110.04		

H-4-64. (XU-7). Frank Turner. Lat. 29°12', long. 99°58'. Depth 832 feet, diameter 6 inches.

Aug. 18, 1937	174.93	Dec. 16, 1937	159.69	Sept. 19, 1938	169.32
Sept. 25	178.08	Apr. 25, 1938	146.95	Oct. 28	169.01
Oct. 19	163.78	June 28	180.40	Jan. 26, 1939	157.29
Nov. 17	158.63	Aug. 23	180.32	Apr. 1	163.37

38
UVALDE COUNTY

H-4-65. (XU-8). Phil Newell. Lat. 29°14', long. 99°59'. Depth 245 feet, diameter 8 inches.

Date	Water level	Date	Water level	Date	Water level
Aug. 18, 1937	153.47	Apr. 25, 1938	126.24	Dec. 9, 1938	135.50
Sept. 25	212.84	May 27	133.05	Jan. 26, 1939	156.60
Oct. 23	162.52	June 29	179.67	Mar. 1	182.76
Nov. 17	127.33	July 28	134.64	Apr. 1	129.93
Dec. 16	128.72	Aug. 23	134.35	Apr. 29	179.62
Feb. 25, 1938	133.43	Sept. 22	123.77	Sept. 14, 1955	67.81
Mar. 22	130.35	Oct. 27	123.95		

H-4-66. (XU-6). R. P. Ingram, Jr. Lat. 29°13', long. 99°55'. Depth 300 feet, diameter 8 inches.

Nov. 17, 1937	199.74	June 28, 1938	147.85	Apr. 29, 1939	140.28
Jan. 18, 1938	123.12	July 28	121.76	July 7	129.25
Feb. 25	111.42	Dec. 9	124.35	Sept. 14	116.40
Mar. 22	117.73	Mar. 1, 1939	126.80		
May 27	114.81	Apr. 1	120.47		

H-5-1. City of Uvalde. Lat. 29°12', long. 99°46'. Depth 350 feet, diameter 12 inches. Land-surface datum is 904.9 feet above msl. Monthly highest reading from recording graph after Oct. 24, 1940.

Nov. 7, 1929	48.73	Jan. 19, 1938	30.22	Oct. 24, 1939	33.13
Dec. 5	49.54	Feb. 5	29.55	Nov. 4	32.96
Jan. 8, 1930	50.61	Mar. 22	29.21	Jan. 12, 1940	32.52
Feb. 6	51.42	Apr. 25	29.06	Feb. 24	32.97
Mar. 10	52.33	May 27	28.93	Apr. 23	33.77
Apr. 5	52.9	June 28	29.60	June 19	33.94
May 18	53.9	July 28	29.43	July 24	33.78
Aug. 29	49.45	Aug. 23	29.78	Aug. 22	34.26
Oct. 22	48.30	Sept. 19	29.58	Oct. 24	35.41
May 14, 1931	37.35	Oct. 27	30.00	Nov. 1	35.75
July 10	34.95	Dec. 9	30.90	Dec. 1	36.28
Oct. 30	33.24	Jan. 28, 1939	31.50	Jan. 23, 1941	37.00
Dec. 1, 1932	27.40	Mar. 3	32.12	Feb. 12	37.03
Oct. 15, 1934	38.24	Apr. 3	33.08	Mar. 31	36.60
Aug. 12, 1935	32.73	May 4	33.50	Apr. 29	35.64
Jan. 28, 1936	28.22	June 10	34.62	May 31	33.02
Aug. 21	28.34	July 8	35.27	June 30	31.64
July 6, 1937	26.74	Aug. 16	33.88	July 31	31.09
Aug. 21	27.77	Sept. 12	33.40	Aug. 24	30.90
		(Continued on next page)			

39
UVALDE COUNTY

H-5-1.- Continued

Date	Water level	Date	Water level	Date	Water level
Sept. 29, 1941	30.60	Apr. 25, 1945	34.86	Nov. 1, 1948	42.49
Oct. 30	30.55	May 13	34.77	Dec. 1	43.36
Nov. 30	29.53	June 1	35.06	Jan. 1, 1949	44.38
Dec. 31	29.15	July 1	35.42	Feb. 1	45.22
Jan. 17, 1942	29.10	Aug. 1	36.27	Mar. 30	41.97
Feb. 5	29.14	Sept. 1	37.10	Apr. 30	39.78
Mar. 1	29.33	Oct. 1	38.09	May 29	38.45
Apr. 1	29.92	Nov. 1	38.78	June 29	37.33
May 1	30.38	Dec. 1	39.34	July 29	36.84
June 17	31.28	Jan. 1, 1946	39.68	Aug. 30	36.33
July 7	31.48	Feb. 1	40.03	Sept. 30	35.36
Aug. 1	32.18	Mar. 1	40.54	Oct. 31	34.37
Sept. 30	32.17	Apr. 1	41.13	Nov. 7	34.19
Oct. 31	31.51	May 1	41.59	Dec. 31	33.70
Nov. 30	30.80	June 1	41.80	Jan. 2, 1950	33.6
Dec. 11	30.65	July 26	40.93	Feb. 1	33.6
Jan. 16, 1943	30.32	Aug. 4	40.95	Mar. 1	33.9
Feb. 2	30.35	Sept. 1	41.10	Apr. 1	34.9
Mar. 1	30.61	Oct. 31	39.85	May 1	35.5
Apr. 1	31.13	Nov. 30	38.43	June 1	36.0
May 1	31.74	Dec. 28	37.79	July 1	36.8
June 1	32.35	Jan. 31, 1947	37.43	Aug. 1	37.6
July 1	32.63	Feb. 28	36.55	Sept. 1	38.3
Aug. 1	33.11	Mar. 31	35.95	Oct. 1	39.1
Sept. 1	34.03	Apr. 30	35.68	Nov. 1	40.4
Oct. 2	34.41	May 20	35.57	Dec. 1	41.7
Nov. 1	35.16	June 29	35.03	Jan. 1, 1951	43.07
Dec. 1	36.09	July 20	34.48	Feb. 2	44.16
Jan. 1, 1944	36.89	Aug. 26	34.12	Mar. 1	45.30
Feb. 1	37.60	Sept. 1	34.21	Apr. 1	46.37
Mar. 28	37.84	Oct. 1	34.75	May 1	47.65
Apr. 30	37.52	Nov. 2	35.25	June 7	47.65
May 31	37.33	Dec. 1	35.68	July 1	49.15
June 21	36.75	Jan. 1, 1948	36.48	Aug. 1	51.45
July 2	36.78	Feb. 1	37.33	Sept. 1	53.25
Aug. 1	37.40	Mar. 1	37.98	Oct. 1	54.55
Sept. 30	35.98	Apr. 1	39.19	Nov. 5	55.10
Oct. 30	35.56	May 1	40.21	Dec. 1	56.27
Nov. 6	35.55	June 1	41.04	Jan. 1, 1952	58.05
Dec. 4	35.62	July 23	41.34	Feb. 22	e 62.1
Jan. 1, 1945	35.91	Aug. 2	41.34	Mar. 24	e 62.1
Feb. 26	35.48	Sept. 1	41.56	Apr. 25	e 62.9
Mar. 31	35.15	Oct. 1	41.85	May 26	t 63.70

(Continued on next page)

e Estimated
t Tape measurement.

40
UVALDE COUNTY

H-5-1.- Continued

Date	Water level	Date	Water level	Date	Water level
June 24, 1952	t 66.65	Oct. 31, 1953	72.85	Feb. 9, 1955	72.26
July 26	t 64.37	Nov. 7	72.27	Mar. 1	73.46
Aug. 22	t 66.45	Dec. 28	72.58	Apr. 1	75.32
Sept. 25	t 67.15	Jan. 2, 1954	72.65	May 24	77.15
Oct. 1	67.32	Feb. 1	73.31	June 13	77.68
Nov. 30	68.80	Mar. 2	75.56	July 25	79.47
Dec. 7	68.71	Apr. 1	78.61	Aug. 1	79.76
Jan. 3, 1953	69.64	May 1	79.54	Sept. 2	81.10
Feb. 2	71.18	June 30	72.70	Oct. 31	73.43
Mar. 1	72.75	July 27	69.23	Nov. 30	71.03
Apr. 3	74.52	Aug. 30	68.66	Dec. 7	70.56
May 1	77.40	Sept. 4	68.38	Jan. 2, 1956	70.84
June 1	79.91	Oct. 14	68.14	Feb. 6	70.65
July 1	82.90	Nov. 1	69.33	Mar. 1	72.65
Aug. 1	85.97	Dec. 7	70.80		
Sept. 28	75.98	Jan. 1, 1955	71.95		

H-5-6. Lanes - Rock Hill Dairy. Lat. 29°12', long. 99°47'. Land-surface datum is 909.2 feet above msl.

Oct. 2, 1929	46.2	Sept. 10, 1952	70.06	Aug. 25, 1954	65.38
Mar. 10, 1952	60.85				

H-5-9. W. J. Malarkey. Lat. 29°11', long. 99°48'. Depth 598 feet, diameter 10 inches.

Oct. 18, 1929	44.7	Sept. 10, 1952	54.52	Aug. 26, 1954	64.43
Mar. 10, 1952	60.5				

H-5-13. John Monigan.. Lat. 29°13', long. 99°49'. Depth 475 feet, diameter 10 inches.

Oct. 21, 1929	66.05	Mar. 9, 1952	81.50	Aug. 26, 1954	86.22
---------------	-------	--------------	-------	---------------	-------

H-5-16. E. H. Barker. Lat. 29°14', long. 99°47'. Depth 110 feet.

Nov. 22, 1929	72.0	Sept. 10, 1952	91.64	Aug. 25, 1954	92.75
Mar. 8, 1952	84.95				

t Tape measurement.

41
UVALDE COUNTY

H-5-17. George Clark. Lat. 29°14', long. 99°48'. Depth 138 feet, diameter 4 inches.

Date	Water level	Date	Water level	Date	Water level
Nov. 21, 1929	65.65	Mar. 10, 1952	78.80		

H-5-18. J. D. Scott. Lat. 29°15', long. 99°49'. Depth 110 feet. Land-surface datum is 935.1 feet above msl.

Nov. 22, 1929	78.25	Sept. 10, 1952	96.69	Aug. 25, 1954	91.16
Mar. 10, 1950	83.57				

H-5-22. Jack Dean. Lat. 29°14', long. 99°47'. Depth 190 feet, diameter 6 inches. Land-surface datum is 933.8 feet above msl.

Nov. 20, 1929	77.85	May 22, 1940	61.58	Dec. 19, 1949	61.19
Dec. 24	79.00	June 19	61.24	Jan. 24, 1950	61.02
Jan. 17, 1930	79.90	July 24	61.03	Apr. 4	62.50
Mar. 13	81.22	Aug. 22	61.62	Aug. 8	65.57
May 21	82.87	Sept. 26	62.56	Dec. 6	70.34
June 24	83.65	Oct. 23	63.32	Jan. 3, 1951	71.70
July 23	78.05	Dec. 2	64.24	May 8	76.54
Aug. 28	77.90	Jan. 23, 1941	64.99	Aug. 15	80.95
Nov. 25	74.40	May 26	60.23	Dec. 19	85.43
Dec. 19	73.50	Aug. 11	57.58	Mar. 10, 1952	89.98
May 14, 1931	64.80	Nov. 12	56.32	Aug. 6	94.00
Oct. 30	60.65	Apr. 8, 1942	56.73	Sept. 8	96.36
Jan. 14, 1932	62.05	Aug. 6	59.24	Dec. 5	97.78
Feb. 16	62.05	Dec. 2	57.49	Apr. 8, 1953	103.93
Apr. 1	61.50	Apr. 28, 1943	58.66	Aug. 12	115.17
July 8	59.80	Aug. 28	61.10	Nov. 24	102.02
Dec. 1	53.42	Dec. 16	64.57	Apr. 15, 1954	108.15
Apr. 10, 1933	52.90	Apr. 30, 1944	65.40	July 15	99.11
July 20	54.30	Aug. 16	61.67	July 23	98.36
Oct. 15, 1934	66.50	Dec. 20	63.60	Aug. 25	97.63
Aug. 12, 1935	59.40	June 6, 1945	62.46	Nov. 11	99.17
Jan. 27, 1936	54.30	Apr. 2, 1946	69.38	Jan. 14, 1955	101.12
Aug. 21	a 62.3	June 30, 1947	63.12	Mar. 9	103.57
July 7, 1937	52.34	Nov. 7	63.82	May 10	108.64
Aug. 21	53.30	Apr. 22, 1948	69.25	July 13	109.53
Sept. 21, 1938	55.98	Aug. 9	69.33	Sept. 14	111.14
Nov. 4, 1939	60.09	Jan. 7, 1949	73.00	Nov. 11	101.45
Jan. 15, 1940	59.84	Mar. 7	72.21	Jan. 11, 1956	100.52
Feb. 24	60.34	Apr. 14	69.02	Mar. 16	103.80
Mar. 21	60.78	Aug. 29	63.78		
Apr. 23	60.21	Nov. 2	61.74		

42
UVALDE COUNTY

H-5-25. George Kennedy. Lat. 29°16', long. 99°45'. Depth 200 feet, diameter 6 inches. Land-surface datum is 982.7 feet above msl.

Date	Water level	Date	Water level	Date	Water level
Nov. 20, 1929	134.0	Sept. 8, 1952	159.70	Aug. 26, 1954	160.25

H-5-26. George Kennedy. Lat. 29°18', long. 99°43'. Depth 200 feet, diameter 7 inches. Land-surface datum is 1,021.4 feet above msl.

Nov. 20, 1929	184.22	Jan. 28, 1936	150.30	Apr. 28, 1943	156.95
Dec. 24	185.27	Aug. 21	150.70	Aug. 28	159.72
Jan. 16, 1930	185.87	July 7, 1937	148.39	Dec. 16	164.88
Mar. 13	187.09	Aug. 21	149.31	Apr. 30, 1944	166.37
May 21	188.2	Jan. 15, 1938	154.20	Aug. 16	165.95
June 24	184.30	Jan. 15, 1940	161.54	Apr. 3, 1946	169.72
July 23	185.45	Feb. 24	162.09	June 30, 1947	161.63
Aug. 28	183.60	Mar. 21	162.71	Nov. 7	164.43
Sept. 30	184.80	Apr. 25	164.19	Apr. 22, 1948	170.70
Oct. 21	180.10	May 22	163.54	Aug. 9	173.26
Dec. 19	178.35	June 19	163.27	Jan. 7, 1949	178.10
May 14, 1931	163.80	July 24	162.72	Mar. 8	173.65
July 11	162.90	Aug. 22	163.62	Apr. 14	173.22
Oct. 30	159.60	Sept. 26	164.75	Aug. 29	166.07
Jan. 14, 1932	161.15	Oct. 23	165.62	Nov. 2	164.21
Feb. 16	161.45	Dec. 4	166.77	Apr. 4, 1950	165.60
Apr. 1	162.05	Jan. 22, 1941	167.04	Aug. 8	169.01
July 8	154.70	May 28	156.03	Dec. 6	174.28
Nov. 30	147.37	Aug. 11	154.99	Jan. 5, 1951	177.1
Apr. 10, 1933	150.00	Nov. 12	152.00	Aug. 16	186.69
July 19	150.90	Apr. 8, 1942	153.61	Aug. 6, 1952	202.45
Oct. 16, 1934	167.65	Aug. 6	157.19	Sept. 8	a 205.8
Aug. 12, 1935	154.12	Dec. 2	155.30	Aug. 26, 1954	a 210.5

H-5-28. George Kennedy. Lat. 29°19', long. 99°42'. Depth 520 feet, diameter 6 inches. Land-surface datum is 1,069.3 feet above msl.

Nov. 21, 1929	249.3	Sept. 10, 1952	242.1	Aug. 25, 1954	252.8
Mar. 10, 1952	239.9				

H-5-35. -- Hooper. Lat. 29°13', long. 99°43'. Diameter 8 inches. Land-surface datum is 961.7 feet above msl.

Nov. 26, 1929	94.47	Sept. 9, 1952	105.6	Aug. 26, 1954	b 117.44
Mar. 9, 1952	94.22				

43
UVALDE COUNTY

H-5-37. John Allison. Lat. 29°13', long. 99°46'. Depth 120+ feet.

Date	Water level	Date	Water level	Date	Water level
Mar. 9, 1952	89.60	Sept. 9, 1952	95.92	Aug. 26, 1954	97.06

H-5-38. Lat. 29°13', long. 99°45'. Diameter 6 inches. Land-surface datum is 909.9 feet above msl.

Dec. 5, 1929	54.13	Oct. 23, 1930	52.95	Feb. 16, 1932	37.90
Jan. 27, 1930	55.78	Dec. 3	50.35	Apr. 1	38.25
Mar. 12	56.98	Dec. 19	49.92	July 9	35.50
May 21	57.27	Apr. 15, 1931	44.55	Aug. 31	34.65
June 24	55.95	May 14	41.45	Dec. 1	30.81
July 23	56.15	July 11	39.30	Apr. 11, 1933	30.35
Aug. 28	53.65	Oct. 30	37.35	July 20	31.70
Sept. 30	54.20	Jan. 14, 1932	37.70		

H-5-39. Wm. Galloway. Lat. 29°13', long. 99°45'. Depth 135 feet, diameter 6 inches. Land-surface datum is 950.8 feet above msl.

Dec. 5, 1929	98.30	Apr. 11, 1933	71.20	June 10, 1939	80.40
Jan. 27, 1930	99.80	July 20	72.40	July 8	81.37
Mar. 12	101.07	Oct. 16, 1934	85.00	Sept. 18	81.20
Apr. 22	102.30	Aug. 13, 1935	78.12	Nov. 4	79.10
May 21	102.92	Jan. 28, 1936	72.30	Jan. 17, 1940	78.79
June 24	101.70	Aug. 21	72.38	Feb. 25	79.32
July 23	98.95	July 9, 1937	70.43	Mar. 18	79.64
Aug. 28	98.05	Aug. 10	71.25	Apr. 26	80.24
Sept. 30	98.50	Sept. 26	72.60	May 20	80.62
Oct. 23	97.45	Oct. 19	73.39	June 19	80.57
Dec. 3	94.90	Dec. 16	75.31	Aug. 22	80.75
Dec. 19	94.10	Jan. 19, 1938	75.21	Sept. 21	81.43
Apr. 15, 1931	88.20	Feb. 25	75.11	Oct. 23	82.25
May 14	85.00	Mar. 18	74.31	Dec. 2	83.17
July 11	81.80	Apr. 25	74.42	Jan. 23, 1941	83.88
Oct. 30	79.35	May 26	73.96	May 26	79.01
Jan. 14, 1932	79.65	June 28	a 74.45	Aug. 13	75.98
Feb. 16	79.90	July 28	74.37	Nov. 12	74.59
Apr. 1	80.30	Aug. 23	a 74.45	Apr. 8, 1942	74.62
July 9	79.90	Sept. 21	a 74.60	Aug. 6	77.38
Aug. 31	76.20	Oct. 27	74.56	Dec. 2	76.08
Dec. 1	71.55	Dec. 9	76.00	Apr. 28, 1943	76.98

(Continued on next page)

44
UVALDE COUNTY

H-5-39.- Continued

Date	Water level	Date	Water level	Date	Water level
Aug. 27, 1943	79.52	Dec. 21, 1944	82.38	Mar. 12, 1952	108.98
Dec. 16	83.04	June 6, 1945	81.13	Sept. 9	115.43
Apr. 30, 1944	84.59	Apr. 3, 1946	88.19		
Aug. 16	84.22	Jan. 4, 1951	94.51		

H-5-42. J. D. Mahaffey. Lat. 29°16', long. 99°42'. Depth over 250 feet, diameter 4 inches. Land-surface datum is 945.3 feet above msl.

Jan. 1, 1930	87.10	Apr. 15, 1931	b 98.70	Apr. 10, 1933	62.25
May 21	90.70	May 14	71.90	July 20	66.55
June 24	83.00	July 11	69.65	Aug. 13, 1935	65.06
July 23	88.20	Oct. 30	69.50	Jan. 28, 1936	65.15
Aug. 28	83.40	Jan. 14, 1932	70.45	July 9, 1937	64.51
Sept. 30	88.30	Apr. 1	80.80	Aug. 10	65.21
Dec. 3	80.40	July 9	71.17	Sept. 21, 1938	69.47
Dec. 19	80.50	Dec. 1	62.19	Jan. 4, 1951	99.08

H-5-51. E. B. Hooper. Lat. 29°09', long. 99°49'. Depth 85 feet, diameter 6 inches. Land-surface datum is 907.5 feet above msl.

Oct. 5, 1929	50.90	Oct. 16, 1934	42.23	Dec. 2, 1940	40.90
Nov. 13	51.15	Aug. 11, 1935	39.38	Jan. 23, 1941	41.24
Dec. 19	51.78	Jan. 27, 1936	35.63	May 26	39.38
Jan. 16, 1930	52.47	Aug. 21	36.20	Aug. 11	37.74
Mar. 10	53.73	July 9, 1937	34.94	Nov. 12	37.21
Apr. 15	54.5	Aug. 10	35.68	Apr. 8, 1942	36.72
June 23	54.14	Sept. 21, 1938	37.21	Aug. 6	38.51
July 22	53.55	Apr. 8, 1939	38.60	Dec. 2	37.51
Aug. 27	52.45	Aug. 1	40.22	Apr. 28, 1943	37.71
Oct. 1	52.50	Sept. 15	39.37	Aug. 28	39.60
Dec. 17	49.30	Oct. 24	39.08	Dec. 16	40.81
May 14, 1931	41.90	Jan. 15, 1940	38.55	May 1, 1944	41.88
July 11	40.60	Feb. 24	38.64	Aug. 16	41.34
Oct. 29	39.30	Mar. 18	38.83	Dec. 21	40.47
Jan. 14, 1932	39.00	Apr. 24	39.14	June 6, 1945	39.06
Mar. 31	39.10	May 22	39.38	Apr. 3, 1946	44.67
July 8	37.59	June 19	39.53	July 1, 1947	36.01
Aug. 31	37.85	July 24	39.45	Nov. 7	36.41
Dec. 1	35.35	Aug. 22	39.79	Apr. 22, 1948	39.35
Apr. 11, 1933	34.70	Sept. 25	40.15	Aug. 9	45.10
July 21	36.20	Oct. 23	40.50	Jan. 7, 1949	47.12

(Continued on next page)

45
UVALDE COUNTY

H-5-51.- Continued

Date	Water level	Date	Water level	Date	Water level
Mar. 9, 1949	47.34	Dec. 19, 1951	58.24	Aug. 25, 1954	69.30
Apr. 14	45.25	Mar. 12, 1952	61.20	Nov. 10	69.12
Aug. 29	41.74	Aug. 6	63.78	Jan. 14, 1955	70.85
Nov. 2	39.87	Sept. 9	66.94	Mar. 9	72.09
Dec. 19	39.50	Dec. 5	68.59	May 10	76.89
Jan. 25, 1950	39.30	Apr. 8, 1953	73.20	July 13	78.53
Apr. 4	40.21	Aug. 12	84.57	Sept. 14	79.83
Aug. 8	42.27	Nov. 24	72.23	Nov. 11	74.64
Dec. 8	45.19	Apr. 15, 1954	77.31	Jan. 12, 1956	70.46
Jan. 3, 1951	45.62	June 1	78.65	Mar. 16	72.36
May 8	50.18	July 13	72.53		
Aug. 15	53.91	July 23	72.93		

H-5-52. D. H. Handcock. Depth 363 feet, diameter 10 inches. Land-surface datum is 900.8 feet above msl. Lat. 29°11', long. 99°46'.

Jan. 12, 1946	36.95	Aug. 7, 1946	37.48	Mar. 3, 1947	33.69
---------------	-------	--------------	-------	--------------	-------

H-5-53. E. E. Capt. Lat. 29°11', long. 99°56'. Depth 650 feet, diameter 12 inches. Land-surface datum is 897.8 feet above msl.

Oct. 24, 1929	41.05	July 8, 1932	28.60	Sept. 21, 1938	27.53
Nov. --, 1930	41.05	Aug. 31	28.30	Jan. 4, 1951	36.52
Apr. 5, 1931	34.20	Dec. 1	26.03	Mar. 12, 1952	52.64
May 13	32.20	Apr. 10, 1933	25.40	Sept. 9	61.43
July 10	30.60	July 21	26.60	Aug. 25, 1954	59.10
Oct. 29	29.50	Oct. 16, 1934	32.75		
Apr. 1, 1932	29.70	Aug. 21, 1936	26.64		

H-5-54. H. Q. Haile. Lat. 29°11', long. 99°46'. Depth 100 feet, diameter 6 inches. Land-surface datum is 892.8 feet above msl.

Oct. 24, 1929	37.2	Aug. 6, 1946	31.11	Mar. 3, 1947	27.87
Feb. 15, 1946	30.12				

H-5-55. H. B. Echols. Lat. 29°11', long. 99°46'. Depth 28 feet, diameter 60 inches, dug well. Land-surface datum is 882.9 feet above msl.

Oct. 24, 1929	27.6	Aug. 6, 1946	21.94	Mar. 3, 1947	19.39
Jan. 12, 1946	20.89				

46
UVALDE COUNTY

H-5-56. H. B. Echols. Lat. 29°11', long. 99°46'. Depth 25 feet, diameter 48 inches, dug well. Land-surface datum is 884.6 feet above msl.

Date	Water level	Date	Water level	Date	Water level
Oct. 24, 1929	30.9	Aug. 6, 1946	24.16	Mar. 3, 1947	21.75
Jan. 11, 1946	23.10				

H-5-57. J. O. Thompson. Lat. 29°11', long. 99°46'. Depth 235 feet, diameter 48 to 8 inches, dug and drilled well. Land-surface datum is 881.1 feet above msl.

Date	Water level	Date	Water level	Date	Water level
Oct. 24, 1929	25.9	Jan. 5, 1946	20.56	Aug. 6, 1946	21.48
Sept. 14, 1945	20.05	Feb. 18	20.75	Mar. 3, 1947	19.35

H-5-58. -- Torres. Lat. 29°11', long. 99°45'. Depth 50+ feet, diameter 60 inches, dug well. Land-surface datum is 904.9 feet above msl.

Date	Water level	Date	Water level	Date	Water level
Oct. 7, 1929	52.2	Aug. 6, 1946	47.61	Mar. 3, 1947	44.29
Jan. 11, 1946	46.0				

H-5-59. W. M. Beavers. Lat. 29°11', long. 99°44'. Depth 100 feet, diameter 6 inches. Land-surface datum is 911.6 feet above msl.

Date	Water level	Date	Water level	Date	Water level
Oct. 7, 1929	60.1	Feb. 27, 1946	53.83	Mar. 3, 1947	51.95
Jan. 11, 1946	53.56	Aug. 6	55.28		

H-5-66. Sam O'Bryant. Lat. 29°11', long. 99°46'. Depth 388 feet, diameter 8 inches. Land-surface datum is 895.4 feet above msl.

Date	Water level	Date	Water level	Date	Water level
Oct. 24, 1929	41.6	Aug. 7, 1946	36.62	Mar. 3, 1947	34.42
Jan. 12, 1946	35.62				

H-5-67. Sam O'Bryant. Lat. 29°11', long. 99°46'. Depth 188 feet, diameter 6 inches. Land-surface datum is 872.5 feet above msl.

Date	Water level	Date	Water level	Date	Water level
Oct. 28, 1929	18.75	Aug. 7, 1946	13.18	Mar. 3, 1947	11.32
Jan. 12, 1946	12.44				

47
UVALDE COUNTY

H-5-68. R. Vosatko. Lat. 29°11', long. 99°46'. Depth 30 feet, diameter 48 inches, dug well. Land-surface datum is 868.5 feet above msl.

Date	Water level	Date	Water level	Date	Water level
Jan. 12, 1946	9.30	Aug. 9, 1946	10.00	Mar. 3, 1947	8.26

H-5-74. -- Wiebush. Lat. 29°12', long. 99°47'. Depth 100 feet, diameter 6 inches. Land-surface datum is 907.1 feet above msl.

Feb. 18, 1946	42.53	Aug. 6, 1946	43.29	Mar. 3, 1947	39.48
---------------	-------	--------------	-------	--------------	-------

H-5-76. John Burns. Lat. 29°12', long. 99°46'. Depth 49 feet, diameter 6 inches. Land-surface datum is 908.8 feet above msl.

Feb. 16, 1946	44.38	Aug. 6, 1946	45.23	Mar. 3, 1947	41.32
---------------	-------	--------------	-------	--------------	-------

H-5-78. Cole Howard. Lat. 29°11', long. 99°46'. Depth 195 feet, diameter 6 inches. Land-surface datum is 902.4 feet above msl.

Feb. 16, 1946	38.89	Aug. 6, 1946	39.87	Mar. 3, 1947	36.08
---------------	-------	--------------	-------	--------------	-------

H-5-79. Jimmie Wakefield. Lat. 29°11', long. 99°46'. Depth 95 feet, diameter 6 inches. Land-surface datum is 903.8 feet above msl.

Feb. 16, 1946	40.17	Aug. 6, 1946	41.10	Mar. 3, 1947	37.29
---------------	-------	--------------	-------	--------------	-------

H-5-82. -- Ross. Lat. 29°11', long. 99°46'. Depth 48 feet, diameter 37 inches, dug well. Land-surface datum is 989.6 feet above msl.

Feb. 16, 1946	35.88	Aug. 6, 1946	37.19	Mar. 3, 1947	33.37
---------------	-------	--------------	-------	--------------	-------

H-5-83. J. T. Martin. Lat. 29°11', long. 99°47'. Depth 60 feet, diameter 6 inches. Land-surface datum is 896.7 feet above msl.

Jan. 15, 1946	33.47	Aug. 7, 1946	34.79	Mar. 3, 1947	31.34
---------------	-------	--------------	-------	--------------	-------

48
UVALDE COUNTY

H-5-85. -- Painter. Lat. 29°11', long. 99°47'. Diameter 8 inches.
Land-surface datum is 896.0 feet above msl.

Date	Water level	Date	Water level	Date	Water level
Jan. 15, 1946	32.62	Aug. 7, 1946	33.00	Mar. 3, 1947	30.70

H-5-86. C. J. Pink. Lat. 29°11', long. 99°46'. Diameter 48 inches, dug well. Land-surface datum is 889.1 feet above msl.

Jan. 12, 1946	37.55	Feb. 27, 1946	37.87	Mar. 3, 1947	36.12
---------------	-------	---------------	-------	--------------	-------

H-5-87. Cecil Bailey. Lat. 29°11', long. 99°46'. Depth 90 feet, diameter 6 inches. Land-surface datum is 898.1 feet above msl.

Feb. 18, 1946	35.04	Aug. 6, 1946	36.00	Mar. 3, 1947	31.80
---------------	-------	--------------	-------	--------------	-------

H-5-88. J. G. Shely. Lat. 29°11', long. 99°46'. Depth 62 feet, diameter 6 inches. Land-surface datum is 895.9 feet above msl.

Feb. 18, 1946	33.05	Aug. 6, 1946	34.04	Mar. 3, 1947	30.87
---------------	-------	--------------	-------	--------------	-------

H-5-89. W. R. Burkholder. Lat. 29°11', long. 99°46'. Depth 55 feet, diameter 8 inches. Land-surface datum is 893.1 feet above msl.

Feb. 18, 1946	30.56	Aug. 6, 1946	31.45	Mar. 3, 1947	28.24
---------------	-------	--------------	-------	--------------	-------

H-5-90. F. H. Southerland. Lat. 29°11', long. 99°46'. Depth 21 feet, diameter 8 inches. Land-surface datum is 882.6 feet above msl.

Feb. 20, 1946	20.35	Aug. 6, 1946	22.49	Mar. 3, 1947	18.74
---------------	-------	--------------	-------	--------------	-------

H-5-91. H. B. Echols. Lat. 29°11', long. 99°46'. Depth 180 feet, diameter 48 to 8 inches, dug and drilled well. Land-surface datum is 889.0 feet above msl.

Jan. 12, 1946	26.29	Aug. 6, 1946	27.43	Mar. 3, 1947	25.32
---------------	-------	--------------	-------	--------------	-------

49
UVALDE COUNTY

H-5-92. S. W. Bailey. Lat. 29°11', long. 99°45'. Depth 65 feet, diameter 8 inches. Land-surface datum is 904.5 feet above msl.

Date	Water level	Date	Water level	Date	Water level
Jan. 11, 1946	43.96	Aug. 6, 1946	45.37	Mar. 6, 1947	42.31

H-5-94. -- Torres. Lat. 29°11', long. 99°45'. Diameter 6 inches. Land-surface datum is 904.1 feet above msl.

Jan. 11, 1946	45.76	Aug. 6, 1946	47.28	Mar. 3, 1947	43.99
---------------	-------	--------------	-------	--------------	-------

H-5-96. H. Q. Haile. Lat. 29°11', long. 99°46'. Diameter 60 inches, dug well. Land-surface datum is 878.9 feet above msl.

Jan. 12, 1946	17.77	Aug. 6, 1946	18.66	Mar. 3, 1947	16.50
---------------	-------	--------------	-------	--------------	-------

H-5-97. Joe Vosatko. Lat. 29°11', long. 99°45'. Diameter 48 inches, dug well. Land-surface datum is 870.5 feet above msl.

Jan. 12, 1946	11.62	Aug. 9, 1946	12.32	Mar. 3, 1947	10.57
---------------	-------	--------------	-------	--------------	-------

H-5-98. George C. Jolly. Lat. 29°11', long. 99°45'. Dug and drilled well. Land-surface datum is 870.6 feet above msl.

Jan. 12, 1946	12.70	Aug. 8, 1946	13.48	Mar. 3, 1947	11.59
---------------	-------	--------------	-------	--------------	-------

H-5-99. Leonard M. Ortiz. Lat. 29°11', long. 99°45'. Depth 57 feet, diameter 48 inches, dug well. Land-surface datum is 895.8 feet above msl.

Sept. 14, 1945	41.20	Aug. 7, 1946	42.43	Mar. 3, 1947	39.39
Feb. 18	40.19				

H-5-100. Joe Vosatko. Lat. 29°10', long. 99°46'. Diameter 8 inches. Land-surface datum is 890.3 feet above msl.

Jan. 12, 1946	29.05	Aug. 9, 1946	30.28	Mar. 4, 1947	27.21
---------------	-------	--------------	-------	--------------	-------

50
UVALDE COUNTY

H-5-101. M. H. Jones. Lat. 29°10', long. 99°46'. Diameter 8 inches.
Land-surface datum is 887.4 feet above msl.

Date	Water level	Date	Water level	Date	Water level
Jan. 15, 1946	28.25	Aug. 8, 1946	29.65	Mar. 6, 1947	26.35

H-5-102. M. L. Flowers. Lat. 29°10', long. 99°46'. Depth 150 feet, diameter 8 inches. Land-surface datum is 890.1 feet above msl.

Jan. 15, 1946	28.86	Aug. 8, 1946	30.26	Mar. 4, 1947	27.01
---------------	-------	--------------	-------	--------------	-------

H-5-103. Charles Wachter. Lat. 29°10', long. 99°46'. Depth 153 feet, diameter 10 inches. Land-surface datum is 883.7 feet above msl.

Jan. 12, 1946	23.52	Aug. 8, 1946	24.88	Mar. 4, 1947	21.76
---------------	-------	--------------	-------	--------------	-------

H-5-104. J. W. Vanham. Lat. 29°10', long. 99°45'. Depth 50 feet, diameter 8 inches. Land-surface datum is 872.6 feet above msl.

Jan. 15, 1946	18.41	Aug. 8, 1946	20.09	Mar. 4, 1947	17.02
---------------	-------	--------------	-------	--------------	-------

H-5-106. Will Hoag, Lat. 29°11', long. 99°44'. Depth 160 feet, diameter 6 inches. Land-surface datum is 887.6 feet above msl.

Jan. 11, 1946	33.14	Aug. 7, 1946	34.65	Mar. 3, 1947	31.94
---------------	-------	--------------	-------	--------------	-------

H-5-174. U. S. Fish and Wildlife Service. Lat. 29°11', long. 99°49'. Depth 1,150 feet, diameter 12 inches. Land-surface datum is 912.1 feet above msl. Monthly highest reading from recorder graph since Nov. 1, 1951.

July 10, 1951	52.03	June 19, 1952	61.91	Apr. 18, 1953	72.13
July 31	51.96	July 1	62.76	May 31	68.98
Oct. 24	56.49	Aug. 4	64.15	June 30	68.05
Nov. 12	55.93	Sept. 3	65.77	July 7	67.45
Dec. 2	56.77	Oct. 1	66.10	Aug. 1	69.93
Jan. 1, 1952	58.27	Nov. 17	66.34	Sept. 29	63.98
Feb. 12	60.14	Dec. 1	66.41	Oct. 31	59.31
Mar. 31	60.60	Jan. 5, 1953	67.62	Nov. 21	58.58
Apr. 3	59.98	Feb. 2	69.41	Dec. 1	59.94
May 1	60.02	Mar. 1	71.70	Jan. 6, 1954	62.27

(Continued on next page)

51
UVALDE COUNTY

H-5-174.- Continued

Date	Water level	Date	Water level	Date	Water level
Feb. 1, 1954	63.11	Nov. 1, 1954	55.36	Aug. 1, 1955	62.80
Mar. 2	65.22	Dec. 1	57.50	Sept. 30	62.08
Apr. 30	65.92	Jan. 1, 1955	58.55	Oct. 31	58.72
May 31	60.19	Feb. 17	58.00	Nov. 30	57.93
June 30	56.06	Mar. 1	58.46	Dec. 1	57.95
July 27	53.90	Apr. 23	59.45	Jan. 1, 1956	58.51
Aug. 1	54.28	May 31	57.52	Feb. 13	57.45
Sept. 28	56.22	June 12	54.97	Mar. 20	58.43
Oct. 16	55.03	July 1	60.23		

H-6-1. Kincaid Estate. Lat. 29°17', long. 99°39', Depth 300 feet, diameter 6 inches. Land-surface datum is 979.3 feet above msl.

Dec. 9, 1929	102.00	Aug. 30, 1932	79.30	May 21, 1940	93.63
Jan. 27, 1930	102.05	Dec. 1	69.08	June 17	93.56
Mar. 12	102.90	Apr. 10, 1933	81.90	Aug. 23	93.62
Apr. 29	103.6	July 19	87.60	Sept. 21	94.09
May 20	103.6	Oct. 24	95.50	Oct. 21	94.18
June 24	102.75	Aug. 13, 1935	64.28	Dec. 2	94.44
July 23	101.90	Jan. 28, 1936	79.53	Jan. 20, 1941	94.96
Aug. 28	100.50	Aug. 21	87.05	May 26	82.14
Sept. 30	101.35	July 8, 1937	84.82	Nov. 12	82.66
Oct. 23	99.50	Aug. 10	86.51	Apr. 8, 1942	87.54
Dec. 3	96.25	Sept. 21, 1938	93.16	Aug. 6	90.86
Dec. 19	96.13	Apr. 8, 1939	95.32	Dec. 3	91.19
Apr. 15, 1931	89.70	Aug. 1	96.72	Apr. 28, 1943	94.24
May 14	90.50	Aug. 17	93.20	Aug. 27	94.74
July 11	84.80	Sept. 18	92.34	Dec. 15	95.13
Oct. 30	86.90	Nov. 4	90.96	May 3, 1944	95.76
Jan. 14, 1932	88.90	Jan. 17, 1940	91.61	Aug. 18	96.77
Feb. 16	90.10	Feb. 20	92.54	Dec. 21	89.27
Apr. 1	91.40	Mar. 21	92.87	June 7, 1945	91.78
July 9	83.35	Apr. 26	93.43	Apr. 1, 1946	95.56

H-6-2. Texas Trap Rock Co. Lat. 29°17', long. 99°39'. Depth 946 feet. Land-surface datum is 977.2 feet above msl.

Sept. 20, 1929	138.2	Apr. 16, 1954	190.06	July 21, 1954	192.62
Mar. 9, 1952	171.45	June 1	175.71	Aug. 26	192.65
Sept. 9	178.15	July 13	192.87	Nov. 11	186.77
		(Continued on next page)			

52
UVALDE COUNTY

H-6-2.- Continued

Date	Water level	Date	Water level	Date	Water level
Jan. 12, 1955	187.00	July 13, 1955	208.02	Jan. 10, 1956	194.09
Mar. 9	189.37	Sept. 14	208.21	Mar. 15	207.83
May 10	213.65	Nov. 11	198.23		

H-6-5. T. J. Niemeyer. Lat. 29°19', long. 99°36'. Depth 488 feet, diameter 6 inches. Land-surface datum is 1,009.2 feet above msl.

Dec. 4, 1929	275.47	Sept. 10, 1952	296.7	Aug. 26, 1954	308.12
Mar. 12, 1952	284.98				

H-6-8. Jones and Son. Lat. 29°18', long. 99°36'. Depth 89 feet, diameter 40 inches, dug well. Land-surface datum is 977.0 feet above msl.

Dec. 9, 1929	76.96	July 7, 1937	75.49	Feb. 25, 1940	71.72
Jan. 27, 1930	76.10	Aug. 11	72.73	Mar. 20	71.66
Mar. 12	76.62	Sept. 26	70.26	Apr. 23	72.02
Apr. 21	78.35	Oct. 19	69.91	May 20	71.67
May 21	76.79	Nov. 20	70.26	June 17	71.54
June 24	76.70	Dec. 19	69.81	July 22	71.77
July 23	78.15	Jan. 19, 1938	70.10	Aug. 22	71.93
Aug. 28	77.70	Feb. 25	70.19	Aug. 23	71.88
Sept. 30	77.00	Mar. 18	70.32	Sept. 21	71.94
Oct. 23	76.55	Apr. 26	70.54	Oct. 21	71.72
Dec. 19	76.60	May 27	77.82	Dec. 2	73.34
Apr. 15, 1931	76.35	June 28	70.87	Jan. 20, 1941	71.60
May 14	76.05	July 28	70.79	May 26	70.15
July 11	75.45	Aug. 23	70.69	Aug. 13	70.11
Oct. 30	76.40	Sept. 22	70.75	Nov. 12	69.26
Jan. 14, 1932	75.40	Oct. 27	70.79	Apr. 8, 1942	69.60
Feb. 16	77.60	Dec. 9	71.18	Dec. 2	70.41
Apr. 1	77.60	Jan. 27, 1939	70.91	Apr. 26, 1943	70.65
July 9	74.80	Mar. 2	71.08	Aug. 27	70.24
Aug. 31	74.85	Apr. 3	71.30	Dec. 15	70.67
Nov. 30, 1933	75.05	May 4	71.20	Apr. 30, 1944	70.76
Apr. 10	72.70	June 9	71.34	Aug. 9	70.91
July 19	72.75	July 6	71.52	Dec. 21	70.48
Oct. 16, 1934	76.54	Aug. 17	71.48	June 4, 1945	70.25
Aug. 12, 1935	70.00	Sept. 16	72.60	Apr. 1, 1946	71.02
Jan. 28, 1936	68.10	Oct. 25	72.75	June 28, 1947	70.07
Aug. 10	71.25	Jan. 17, 1940	72.07	Nov. 7	69.88
Aug. 21	71.25	Feb. 21	71.67	Apr. 22, 1948	76.79

(Continued on next page)

53
UVALDE COUNTY

H-6-8.- Continued

Date	Water level	Date	Water level	Date	Water level
Aug. 9, 1948	70.21	Dec. 19, 1951	70.44	Nov. 11, 1954	71.42
Jan. 6, 1949	70.50	Mar. 12, 1952	70.76	Jan. 12, 1955	71.54
Apr. 12	70.31	Aug. 6	71.04	Mar. 9	71.40
Aug. 26	70.10	Dec. 5	71.40	May --	71.47
Dec. 19	68.60	Apr. 8, 1953	71.29	July 13	71.62
Apr. 4, 1950	68.61	Aug. 12	71.75	Sept. 14	71.76
Aug. 8	69.42	Nov. 24	70.69	Nov. 11	71.93
Dec. 6	69.57	Apr. 15, 1954	70.70	Jan. 10, 1956	72.00
May 8, 1951	70.17	July 13	70.79	Mar. 15	72.15
Aug. 14	72.05	July 21	71.37		

H-6-9. Allbright. Lat. 29°18', long. 99°33'. Depth 160 feet, diameter 6 inches.

Dec. 11, 1929	61.40	May 14, 1931	39.60	Apr. 10, 1933	39.20
Jan. 27, 1930	59.18	July 11	40.70	July 20	41.00
Mar. 13	60.90	Oct. 30	44.65	Aug. 12, 1935	37.67
June 24	44.20	Jan. 14, 1932	44.25	Jan. 28, 1936	38.42
July 23	41.25	Feb. 16	44.30	Aug. 21	40.10
Aug. 28	44.30	Apr. 1	44.10	July 7, 1937	41.52
Sept. 30	48.20	July 9	40.82	Aug. 10	42.13
Dec. 19	45.10	Aug. 31	40.10	Sept. 21, 1938	45.62
Apr. 15, 1931	42.15	Nov. 30	38.30		

H-6-10. Herbert Stevens. Lat. 29°18', long. 99°30'. Depth 77 feet, diameter 48 inches, dug well.

Dec. 12, 1929	68.41	Oct. 30, 1931	67.75	Aug. 10, 1937	66.93
Jan. 27, 1930	68.45	Jan. 4, 1932	67.85	Sept. 26	67.83
Mar. 12	68.64	Feb. 16	68.05	Oct. 19	66.19
May 21	68.85	Apr. 1	68.20	Nov. 20	66.63
June 24	68.30	July 9	66.75	Dec. 19	66.29
July 23	68.20	Aug. 31	66.70	Jan. 19, 1938	66.44
Aug. 28	68.40	Nov. 30	65.30	Feb. 25	66.54
Sept. 30	68.55	Apr. 10, 1933	66.45	Mar. 16	66.56
Oct. 23	68.30	July 19	66.65	Apr. 26	66.64
Dec. 3	68.10	Oct. 23, 1934	57.83	May 26	66.68
Dec. 19	69.00	Aug. 12, 1935	62.49	June 28	66.70
Apr. 15, 1931	67.25	Jan. 28, 1936	66.95	July 26	66.69
May 14	67.30	Aug. 21	68.25	Aug. 23	66.79
July 11	67.30	July 7, 1937	67.67	Sept. 22	66.86

(Continued on next page)

54
UVALDE COUNTY

H-6-10. - Continued

Date	Water level	Date	Water level	Date	Water level
Oct. 26, 1938	66.93	May 26, 1941	67.13	Dec. 6, 1950	67.01
Dec. 9	67.09	Aug. 13	66.27	May 8, 1951	66.66
Jan. 27, 1939	67.19	Nov. 12	65.80	Aug. 14	67.42
Mar. 2	67.59	Apr. 6, 1942	69.92	Dec. 19	68.79
Apr. 3	67.80	Aug. 4	67.25	Mar. 10, 1952	67.44
May 4	67.64	Dec. 2	66.05	Aug. 6	67.10
June 9	67.96	Apr. 26, 1943	65.70	Dec. 5	67.37
July 6	67.90	Aug. 29	65.02	Apr. 8, 1953	67.50
Aug. 17	68.15	Dec. 15	65.33	Aug. 12	67.92
Sept. 16	67.73	Apr. 30, 1944	65.41	Nov. 24	67.74
Oct. 25	67.93	Aug. 9	65.38	Apr. 15, 1954	67.56
Jan. 16, 1940	68.03	Dec. 20	65.54	July 13	67.50
Feb. 25	68.09	Jan. 1, 1946	65.4	July 23	67.54
Mar. 21	68.37	June 28, 1947	66.54	Jan. --, 1955	67.80
Apr. 23	68.38	Nov. 7	67.20	Mar. 9	67.82
May 20	68.44	Apr. 22, 1948	67.58	May 10	68.59
June 17	68.43	Aug. 2	67.08	July 13	67.73
July 22	68.42	Jan. 6, 1949	67.14	Sept. 14	67.80
Aug. 23	68.68	Apr. 12	67.44	Nov. 10	67.81
Sept. 24	68.79	Aug. 25	66.44	Jan. 10, 1956	67.97
Oct. 21	69.12	Dec. 19	66.08	Mar. 15	68.11
Dec. 2	68.37	Apr. 4, 1950	65.71		
Jan. 23, 1941	68.37	Aug. 8	65.77		

H-6-16. Cecil Reagan. Lat. 29°15', long. 99°35'. Depth 1,330 feet, diameter 6 inches. Land-surface datum is 934.3 feet above msl.

Dec. 11, 1929	193.69	Oct. 24, 1934	178.00	Oct. 21, 1940	176.51
Jan. 27, 1930	194.15	Jan. 28, 1936	133.85	Dec. 2	178.04
Mar. 13	210.35	Aug. 21	144.72	Jan. 23, 1941	177.15
Apr. 29	202.3	July 7, 1937	129.62	May 26	163.80
May 21	199.80	Aug. 10	131.33	Aug. 13	153.16
June 24	199.05	Sept. 23, 1938	145.68	Nov. 12	146.14
Sept. 30	198.55	Jan. 17, 1940	170.55	Apr. 8, 1942	146.07
Dec. 19	190.15	Feb. 25	171.82	Aug. 4	a 170.68
Apr. 15, 1931	182.40	Mar. 21	172.43	Aug. 27, 1943	158.88
May 14	177.20	Apr. 23	173.39	Dec. 15	167.43
July 10	167.90	May 20	173.90	Apr. 30, 1944	175.08
Jan. 14, 1932	159.00	June 17	174.20	Aug. 16	174.63
Nov. 30	141.27	July 22	174.19	Dec. 21	172.79
Apr. 11, 1933	140.60	Aug. 22	174.57	Apr. 3, 1946	166.15
July 20	147.20	Sept. 24	175.42	June 28, 1947	169.44

(Continued on next page)

H-6-16--Continued

Date	Water level	Date	Water level	Date	Water level
Nov. 7, 1947	178.14	Jan. 4, 1951	193.06	July 13, 1954	228.13
Apr. 22, 1948	183.62	May 8	209.38	Aug. 26	230.50
Aug. 9	184.20	Aug. 14	202.38	Nov. 11	230.69
Jan. 6, 1949	191.20	Dec. 19	202.28	Jan. 12, 1955	232.98
Apr. 13	186.31	Mar. 12, 1952	209.52	Mar. 9	235.50
Aug. 26	178.72	Aug. 6	215.38	May 10	240.15
Nov. 1	177.74	Sept. 9	218.55	July 13	240.47
Dec. 19	175.59	Dec. 5	216.10	Nov. 10	241.00
Jan. 24, 1950	175.03	Apr. 8, 1953	223.50	Jan. 10, 1956	243.84
Aug. 8	178.82	Aug. 12	227.83	Mar. 15	252.03
Dec. 6	185.26	June 1, 1954	229.80		

H-6-21. Mrs. Conner. Lat. 29°20', long. 99°38'. Depth 33 feet, diameter 60 inches, dug well. Land-surface datum is 832.5 feet above msl.

Nov. 6, 1929	24.55	Mar. 14, 1930	25.60	Aug. 29, 1930	23.05
Dec. 23	25.12	Apr. 10	26.1	Oct. 1	24.25
Jan. 14, 1930	25.28	July 24	21.30	Dec. 20	20.70

H-8-2. Hines and Monigan. Lat. 29°09', long. 99°48'. Diameter 6 inches. Land-surface datum is 949.3 feet above msl.

Nov. 15, 1929	82.9	Sept. 9, 1952	99.97	Aug. 25, 1954	111.63
Mar. 12, 1952	99.75				

H-8-4. -- Roberts. Lat. 29°08', long. 99°48'. Depth 150 feet, diameter 5 inches. Land-surface datum is 948.2 feet above msl.

Oct. 7, 1929	79.10	Mar. 10, 1930	78.38	July 22, 1930	78.90
Nov. 13	79.05	Apr. 14	78.95	Aug. 27	83.80
Dec. 17	78.89	May 20	79.11		
Jan. 16, 1930	77.78	June 28	78.20		

H-8-13. W. E. Lee. Lat. 29°08', long. 99°44'. Depth 41 feet, diameter 36 inches, dug well. Land-surface datum is 869.6 feet above msl.

Oct. 26, 1929	39.04	Apr. 8, 1930	39.58	Aug. 29, 1930	40.20
Nov. 8	39.15	May 22	40.03	Oct. 1	40.40
Dec. 23	39.40	June 23	39.53	Oct. 21	39.81
Jan. 15, 1930	39.37	July 23	39.80	Dec. 19	39.10
		(Continued on next page)			

56
UVALDE COUNTY

H-8-13.- Continued

Date	Water level	Date	Water level	Date	Water level
May 13, 1931	37.10	Apr. 2, 1932	36.46	July 21, 1933	36.93
July 10	37.35	July 8	35.05	Jan. 15, 1946	38.34
Oct. 29	37.34	Dec. 1	36.28	Aug. 9	39.28
Jan. 13, 1932	37.88	Apr. 10, 1933	36.35	Mar. 5, 1947	37.73

H-8-14. W. E. Lee. Lat $29^{\circ}07'$, long. $99^{\circ}43'$. Diameter 6 inches. Land-surface datum is 859.5 feet above msl.

Oct. 26, 1929	32.2	Aug. 9, 1946	32.20	Mar. 6, 1947	31.51
Jan. 18, 1946	31.77				

H-8-19. A. W. West. Lat. $29^{\circ}05'$, long. $99^{\circ}45'$. Depth 400 feet, diameter 6 inches.

Oct. 28, 1929	83.20	June 25, 1930	55.35	Oct. 1, 1930	67.35
Dec. 23	61.79	July 24	60.15	Dec. 20	68.45
Jan. 14, 1930	58.65	Aug. 29	64.45	May 13, 1931	66.15

H-8-27. Lane Taylor. Lat. $29^{\circ}07'$, long. $99^{\circ}42'$. Land-surface datum is 835.5 feet above msl.

Nov. 12, 1929	32.8	Aug. 9, 1946	31.73	Mar. 3, 1947	29.71
Sept. 12, 1945	32.15				

H-8-28. Lane Taylor. Lat. $29^{\circ}07'$, long. $99^{\circ}41'$. Land-surface datum is 835.9 feet above msl.

Nov. 2, 1929	29.82	Jan. 5, 1946	28.94	Mar. 3, 1947	27.99
Sept. 12, 1945	30.05	Aug. 10	30.09		

H-8-29. Lane Taylor. Lat. $29^{\circ}08'$, long. $99^{\circ}40'$. Depth 250 feet, diameter 8 inches. Land-surface datum is 833.0 feet above msl.

Nov. 2, 1929	43.53	Jan. 5, 1946	31.86	Aug. 10, 1946	32.62
Sept. 12, 1945	32.36	Jan. 28	31.80	Mar. 3, 1947	30.78

57
UVALDE COUNTY

H-8-31. Lane Taylor. Lat. 29°07', long. 99°41'. Depth 50 feet, dug well. Land-surface datum is 830.4 feet above msl.

Date	Water level	Date	Water level	Date	Water level
Nov. 2, 1929	30.4	Feb. 20, 1946	28.48	Mar. 3, 1947	27.74
Sept. 12, 1945	29.38				

H-8-32. J. E. Dockery. Lat. 29°06', long. 99°40'. Diameter 72 inches, dug well. Land-surface datum is 815.0 feet above msl.

Nov. 4, 1929	35.15	Aug. 8, 1946	33.41	Mar. 3, 1947	32.09
Jan. 5, 1946	33.84				

H-8-33. P. C. Montgomery. Lat. 29°09', long. 99°46'. Depth 300 feet, diameter 6 inches. Land-surface datum is 888.6 feet above msl.

Jan. 15, 1946	32.09	Aug. 8, 1946	33.66	Mar. 4, 1947	30.93
---------------	-------	--------------	-------	--------------	-------

H-8-34. T. A. McKinney. Lat. 29°09', long. 99°45'. Land-surface datum is 885.9 feet above msl.

Jan. 15, 1946	32.65	Aug. 8, 1946	34.37	Mar. 4, 1947	31.72
---------------	-------	--------------	-------	--------------	-------

H-8-39. Fred Ehlers. Lat. 29°09', long. 99°44'. Diameter 6 inches. Land-surface datum is 873.3 feet above msl.

Sept. 13, 1945	30.85	Aug. 7, 1946	32.44	Mar. 3, 1947	29.30
Jan. 5, 1946	29.96				

H-8-41. Ralph Harris. Lat. 29°09', long. 99°44'. Depth 58 feet, diameter 6 inches. Land-surface datum is 874.6 feet above msl.

Sept. 12, 1945	34.20	Feb. 18, 1946	33.81	Aug. 7, 1946	35.60
Jan. 5, 1946	33.85				

H-8-42. Walter Harris. Lat. 29°09', long. 99°44'. Diameter 48 inches, dug well. Land-surface datum is 870.4 feet above msl.

Sept. 14, 1945	29.17	Aug. 7, 1946	30.73	Mar. 3, 1947	27.62
Feb. 20, 1946	28.55				

58
UVALDE COUNTY

H-8-45. Jimmie Wakefield. Lat. 29°09', long. 99°43'. Diameter 6 inches.
Land-surface datum is 872.9 feet above msl.

Date	Water level	Date	Water level	Date	Water level
Sept. 13, 1945	35.00	Aug. 7, 1946	36.24	Mar. 3, 1947	34.12
Feb. 20, 1946	34.58				

H-8-47. John King. Lat. 29°08', long. 99°44'. Depth 35 feet, diameter 48 inches, dug well. Land-surface datum is 866.9 feet above msl.

Jan. 24, 1946	31.18	Aug. 9, 1946	32.39	Mar. 4, 1947	30.86
---------------	-------	--------------	-------	--------------	-------

H-8-49. -- White. Lat. 29°08', long. 99°44'. Depth 44 feet, diameter 48 inches, dug well. Land-surface datum is 871.3 feet above msl.

Jan. 24, 1946	34.75	Aug. 9, 1946	36.16	Mar. 4, 1947	34.14
---------------	-------	--------------	-------	--------------	-------

H-8-50. -- Hale. Lat. 29°08', long. 99°44'. Diameter 8 inches, depth 38 feet.
Land-surface datum is 871.9 feet above msl.

Jan. 24, 1946	34.94	Aug. 9, 1946	36.31	Mar. 4, 1947	34.30
---------------	-------	--------------	-------	--------------	-------

H-8-51. -- Moore. Lat. 29°08', long. 99°44'. Depth 37 feet, diameter 8 inches. Land-surface datum is 871.8 feet above msl.

Jan. 24, 1946	35.10	Aug. 9, 1946	36.54	Mar. 4, 1947	34.57
---------------	-------	--------------	-------	--------------	-------

H-8-59. French Jordan. Lat. 29°08', long. 99°43'. Depth 42 feet, diameter 60 inches, dug well. Land-surface datum is 848.5 feet above msl.

Sept. 13, 1945	30.75	Aug. 8, 1946	31.19	Mar. 3, 1947	29.90
Feb. 20, 1946	30.11				

H-8-62. A. A. Meacham. Lat. 29°08', long. 99°42'. Depth 34 feet, diameter 60 inches, dug well. Land-surface datum is 848.6 feet above msl.

Sept. 13, 1945	33.13	Aug. 8, 1946	33.39	Mar. 4, 1947	32.04
Feb. 20, 1946	32.30				

59
UVALDE COUNTY

H-8-63. Ditch School. Lat. 29°08', long. 99°42'. Unused drilled school well, depth 65 feet, diameter 6 inches. Land-surface datum is 846.1 feet above msl.

Date	Water level	Date	Water level	Date	Water level
Sept. 12, 1945	33.29	Mar. 9, 1950	31.75	Nov. 21, 1951	37.22
Jan. 5, 1946	32.54	Apr. 6	32.07	Dec. 21	38.11
Aug. 8	33.62	May 2	31.94	Jan. 24, 1952	38.52
Mar. 4, 1947	32.04	June 7	31.98	Feb. 22	38.87
Oct. 12, 1948	33.50	July 10	32.59	Mar. 12	39.61
Nov. 10	33.07	Aug. 3	32.88	Mar. 26	40.19
Dec. 24	34.04	Sept. 5	33.17	Apr. 21	39.32
Jan. 20, 1949	34.31	Oct. 3	32.82	May 26	38.08
Mar. 7	32.08	Nov. 2	35.46	June 24	36.81
Apr. 12	31.87	Dec. 6	34.25	July 24	39.50
May 10	31.75	Jan. 13, 1951	35.60	Sept. 25	41.86
June 15	32.14	Feb. 11	35.70	Oct. 22	42.74
July 17	32.49	May 4	35.78	Dec. 21	45.69
Aug. 10	32.66	June 1	33.40	Jan. 23, 1953	47.24
Sept. 22	32.80	July 10	33.91	Feb. 24	47.96
Oct. 29	32.24	July 31	35.07	Mar. 24	49.16
Nov. 29	32.04	Sept. 13	36.67	Apr. 23	50.80
Jan. 25, 1950	31.61	Oct. 24	36.98		

H-8-64. Lane Taylor. Lat. 29°08', long. 99°40'. Depth 35 feet, diameter 30 inches, dug well. Land-surface datum is 830.8 feet above msl.

Sept. 12, 1945	30.12	Aug. 8, 1946	30.59	Mar. 4, 1947	28.29
Jan. 5, 1946	29.51				

H-9-1. W. N. Beavers. Lat. 29°06', long. 99°39'. Diameter 8 inches. Land-surface datum is 820.7 feet above msl.

Nov. 4, 1929	34.25	Jan. 5, 1946	31.25	Mar. 3, 1947	30.58
Sept. 12, 1945	32.38	Aug. 8	32.07		

H-9-3. W. N. Beavers. Lat. 29°06', long. 99°39'. Diameter 72 inches, dug well. Land-surface datum is 849.6 feet above msl.

Nov. 4, 1929	63.70	Aug. 8, 1946	62.70	Mar. 3, 1947	62.55
Jan. 5, 1946	61.14				

60
UVALDE COUNTY

H-9-5. Kincaid Bros. Lat. 29°05', long. 99°38'. Depth 42 feet, diameter 48 inches, dug well. Land-surface datum is 791.5 feet above msl.

Date	Water level	Date	Water level	Date	Water level
Nov. 4, 1929	32.7	May 22, 1930	35.74	Oct. 1, 1930	35.15
Dec. 23	34.00	June 25	36.30	Nov. 2	35.45
Jan. 15, 1930	34.63	July 24	35.25	Dec. 20	35.70
Apr. 11	35.62	Aug. 29	35.80		

H-9-6. Kincaid Bros. Lat. 29°06', long. 99°36'. Depth 160 feet, diameter 6 inches.

Nov. 9, 1929	100.40	Jan. 14, 1930	94.10	Aug. 29, 1930	95.00
Dec. 21	99.25	July 24	129.00		

H-9-8. Kincaid Estate. Lat. 29°07', long. 99°35'. Depth 150[±] feet, diameter 6 inches.

Nov. 5, 1929	108.30	June 25, 1930	b 116.20	Oct. 1, 1930	b 123.40
Dec. 21	109.50	July 24	b 113.15	Dec. 20	108.00
Jan. 14, 1930	104.34	Aug. 29	105.55		

H-9-13. T. P. Lee. Lat. 29°06', long. 99°38'. Diameter 8 inches, depth over 222 feet.

Jan. 28, 1946	85.15	Aug. 10, 1946	88.06	Mar. 6, 1947	93.35
---------------	-------	---------------	-------	--------------	-------

I-1-3. E. B. Kincaid. Lat. 29°23', long. 99°28'. Depth 1,000 feet. Land-surface datum is 1,010.2 feet above msl.

Feb. 21, 1930	189.52	Aug. 11, 1937	232.61	Aug. 9, 1952	309.0
Oct. 18, 1934	269.20	Sept. 23, 1938	245.05	Aug. 26, 1954	321.0
July 7, 1937	229.11	Jan. 9, 1951	207.0		

I-4-9. M. E. Griffin, Lat. 29°14', long. 99°28'. Used drilled domestic well, diameter 6 inches, depth 970 feet. Land-surface datum is 974.4 feet above msl.

Dec. 11, 1929	256.50	Oct. 18, 1934	234.75		
---------------	--------	---------------	--------	--	--

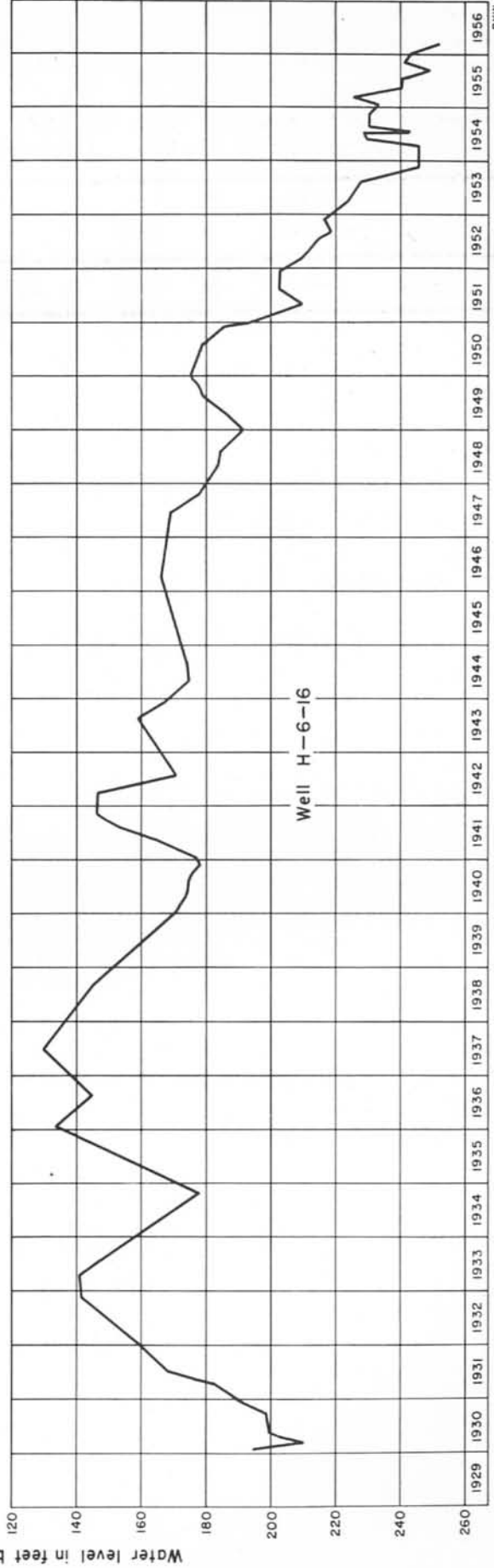
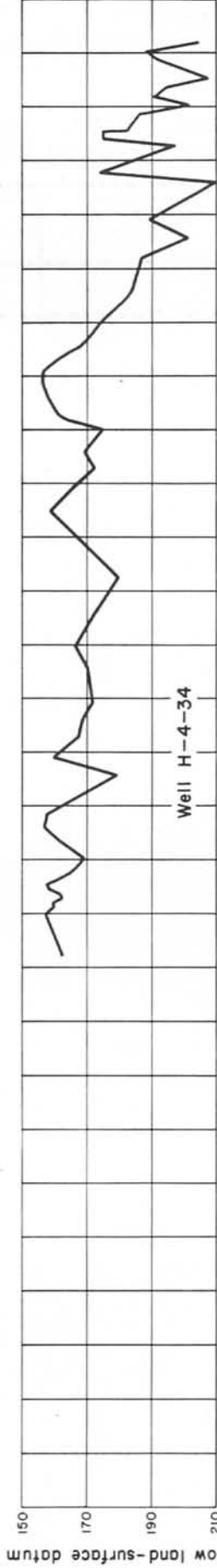
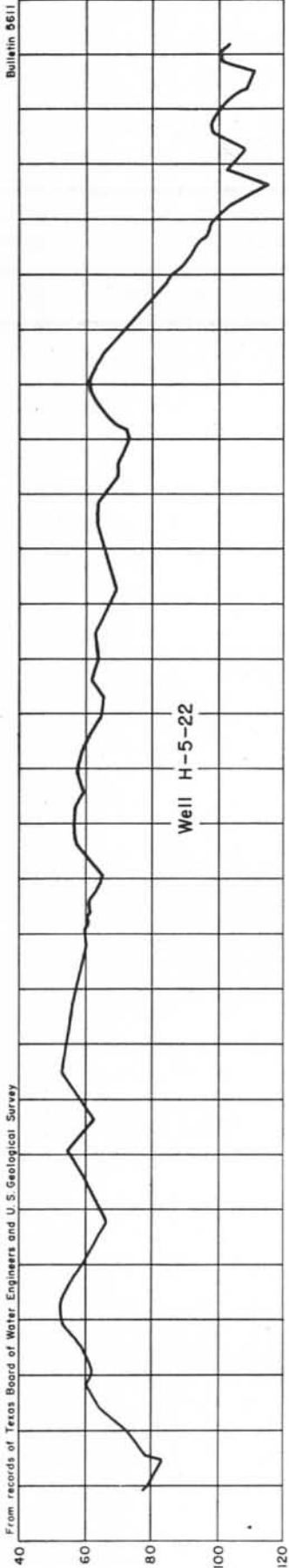
61
UVALDE COUNTY

I-4-32. Quinn Braden. Lat. 29°15', long. 99°29'. Depth 1,165 feet,
diameter 10 inches. Land-surface datum is 866.4 feet above msl.

Date	Water level	Date	Water level	Date	Water level
Mar. 9, 1952	40.00	Sept. 9, 1952	39.79	Aug. 26, 1954	39.66

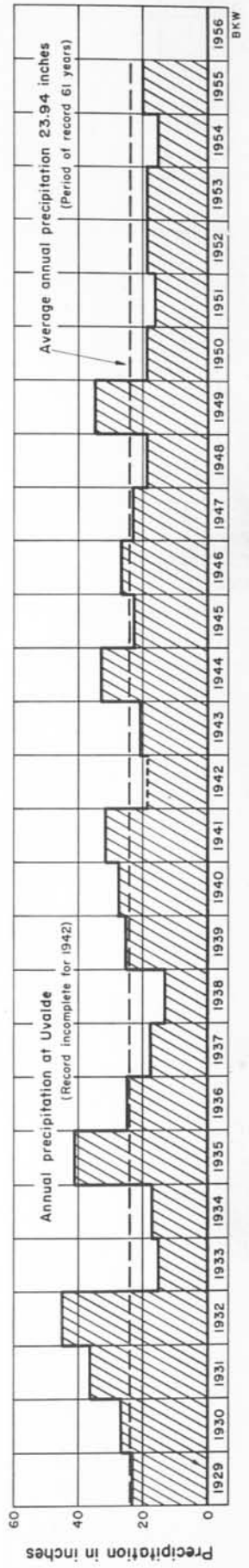
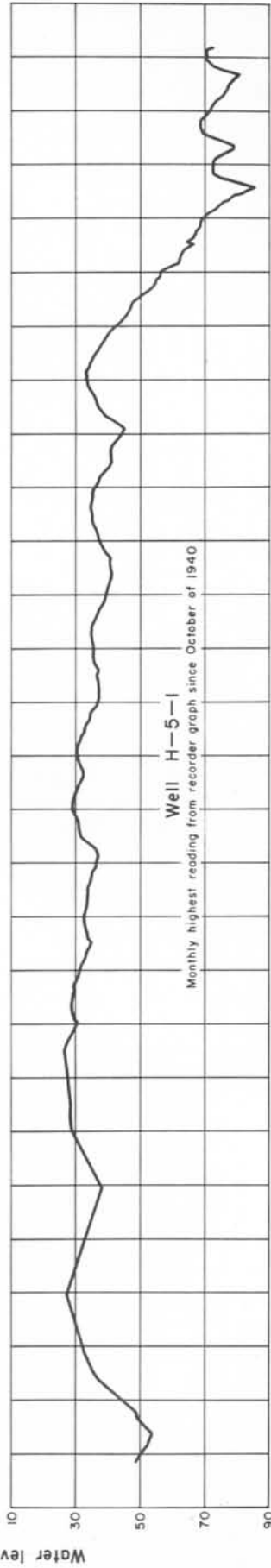
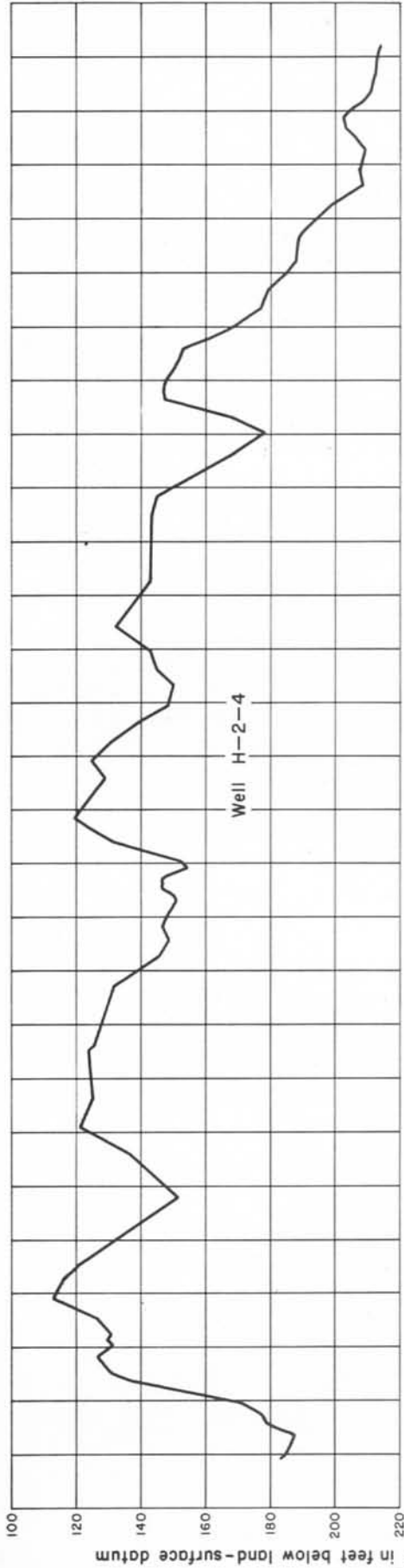
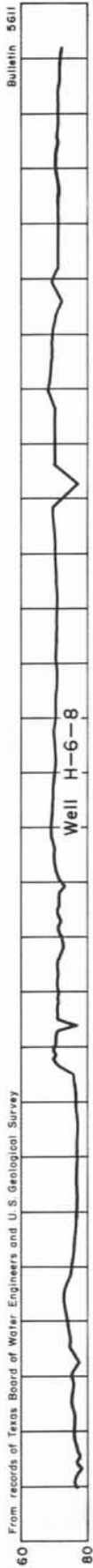
a Pumping.

b Pumped recently.



Hydrographs of water levels in wells in Uvalde County, Tex.

BKW



Hydrographs of water levels in wells, Uvalde County, and annual precipitation at Uvalde, Tex.



VAL VERDE COUNTY

Copyrighted material

Copyrighted material



BASE MAP FROM STATE HIGHWAY DEPARTMENT

BKW

OBSERVATION WELLS IN VAL VERDE COUNTY, TEXAS
MARCH 1956

WATER LEVEL MEASUREMENTS IN VAL VERDE COUNTY, TEXAS

J-2. B. E. Wilson. Lat. $31^{\circ}11'$, long. $101^{\circ}05'$. Depth 150 feet, diameter 16 inches, not cased.

Date	Water level	Date	Water level	Date	Water level
Jan. 27, 1954	94.99	Jan. 27, 1955	88.41	Dec. 9, 1955	90.35

J-3. B. E. Wilson. Lat. $30^{\circ}10'$, long. $101^{\circ}04'$. Diameter 12 inches.

Jan. 27, 1954	43.00	Jan. 27, 1955	39.35	Dec. 9, 1955	40.19
---------------	-------	---------------	-------	--------------	-------

J-4. B. E. Wilson. Lat. $30^{\circ}10'$, long. $101^{\circ}01'$. Depth about 200 feet, diameter 18 inches, not cased.

Jan. 27, 1954	64.68	Jan. 27, 1955	57.81	Dec. 9, 1955	58.37
---------------	-------	---------------	-------	--------------	-------

J-6. B. E. Wilson. Lat. $30^{\circ}10'$, long. $101^{\circ}03'$. Depth 148 feet, diameter 12 inches.

Jan. 27, 1954	45.51	Jan. 27, 1955	43.14	Dec. 9, 1955	42.83
---------------	-------	---------------	-------	--------------	-------

J-7. J. V. Drisdale. Lat. $30^{\circ}13'$, long. $100^{\circ}57'$. Depth 215 feet, diameter 18 inches, not cased.

Jan. 27, 1954	97.18	Jan. 27, 1955	95.51	Dec. 9, 1955	96.18
---------------	-------	---------------	-------	--------------	-------

J-9. J. V. Drisdale. Lat. $30^{\circ}15'$, long. $100^{\circ}57'$. Depth 256 feet.

Jan. 27, 1954	101.61	Jan. 27, 1955	100.29	Dec. 9, 1955	100.02
---------------	--------	---------------	--------	--------------	--------

J-12. B. E. Wilson. Lat. $39^{\circ}10'$, long. $101^{\circ}05'$.

Jan. 27, 1955	34.25	Dec. 9, 1955	37.78		
---------------	-------	--------------	-------	--	--

67
VAL VERDE COUNTY

J-13. B. E. Wilson. Lat. 30°10', long. 101°01'.

Date	Water level	Date	Water level	Date	Water level
Jan. 27, 1955	52.63	Dec. 9, 1955	52.79		

XV-1. B. S. Harrison. Lat 29°22', long. 100°44'. Depth 60 feet, diameter 6 inches.

Aug. 20, 1937	38.58	Oct. 28, 1938	39.01	Apr. 24, 1940	38.21
Sept. 26	38.85	Dec. 10	38.75	May 21	38.54
Oct. 22	39.31	Jan. 26, 1939	38.44	June 18	38.45
Nov. 16	39.09	Mar. 1	38.29	July 23	38.14
Dec. 18	39.29	Apr. 1	38.23	Aug. 22	38.62
Jan. 18, 1938	38.83	Apr. 29	38.50	Sept. 19	38.78
Feb. 24	38.76	June 7	38.69	Oct. 22	39.13
Mar. 22	39.44	July 7	39.02	Dec. 3	38.97
Apr. 23	38.86	Aug. 14	38.74	Jan. 21, 1941	38.97
May 26	39.10	Sept. 13	38.73	May 27	39.33
June 29	39.60	Nov. 10	39.01	Aug. 12	40.42
July 28	38.53	Dec. 5	38.81	Nov. 13	39.86
Aug. 24	38.72	Feb. 23, 1940	38.65	Apr. 7, 1942	39.50
Sept. 18	38.95	Mar. 19	38.55		

XV-1a. U. S. Air Force. Lat. 29°21', long. 100°47'.

Aug. 28, 1954	70.56	May 12, 1955	76.56	Jan. 11, 1956	74.44
Nov. 11	68.06	July 12	77.59	Mar. 14	75.92
Jan. 13, 1955	68.88	Sept. 13	77.21		
Mar. 11	72.30	Nov. 10	72.93		

XV-2. L. A. McNutt. Lat. 29°22', long. 100°51'. Depth 145 feet, diameter 8 inches.

Aug. 20, 1937	68.40	May 26, 1938	73.29	Apr. 29, 1939	75.35
Sept. 25	72.31	July 28	72.62	June 7	74.11
Oct. 20	72.25	Aug. 24	73.74	July 7	75.65
Nov. 17	73.82	Sept. 18	70.39	July 27	79.12
Dec. 18	72.95	Oct. 28	71.48	Aug. 14	72.56
Jan. 8, 1938	70.29	Dec. 10	69.59	Sept. 18	73.34
Feb. 24	69.55	Jan. 26, 1939	69.29	Nov. 3	83.30
Mar. 19	70.73	Mar. 1	70.62	Dec. 5	71.50
Apr. 3	70.17	Apr. 1	78.35	Jan. 15, 1940	73.17
		(Continued on next page)			

VAL VERDE COUNTY

XV-2.- Continued

Date	Water level	Date	Water level	Date	Water level
Feb. 22, 1940	74.00	Apr. 2, 1946	78.84	Apr. 7, 1953	80.40
Feb. 23	72.73	June 24, 1947	77.65	Aug. 11	88.23
Mar. 19	73.69	Nov. 3	76.60	Nov. 19	77.49
Apr. 24	73.10	Apr. 20, 1948	82.45	Apr. 12, 1954	79.31
May 21	73.08	Jan. 8, 1949	79.35	June 1	74.71
June 18	71.24	Mar. 8	72.38	July 14	77.39
Aug. 21	70.55	Apr. 14	70.05	July 22	75.92
Sept. 19	72.03	Aug. 27	71.80	Aug. 23	80.28
Oct. 22	73.72	Dec. 20	67.30	Nov. 11	75.70
Dec. 3	72.95	Apr. 5, 1950	68.09	Jan. 13, 1955	69.17
Aug. 13, 1941	74.21	Aug. 10	81.08	Mar. 11	71.77
Apr. 7, 1942	74.74	Dec. 7	78.44	May 12	75.30
Aug. 5	76.44	Aug. 15, 1951	81.18	July 12	76.40
Dec. 1	69.63	Dec. 19	82.36	Sept. 12	75.26
Dec. 17, 1943	72.57	Mar. 14, 1952	86.16	Nov. 10	71.62
May 2, 1944	76.56	Aug. 2	b 93.87	Jan. 11	b 80.56
Aug. 18	81.44	Sept. 12	b 90.69	Mar. 13	77.69
Dec. 23	74.71	Dec. 3	86.15		

XV-3. Patricio Confreres. Lat. 29°22', long. 100°52'. Depth 56 feet, diameter 4 inches.

Aug. 20, 1937	37.54	Mar. 1, 1939	37.37	July 23, 1940	37.78
Sept. 25	38.84	Apr. 1	37.85	Aug. 21	37.78
Oct. 31	38.85	Apr. 29	38.32	Sept. 19	38.16
Nov. 16	38.87	June 7	37.60	Oct. 22	38.65
Dec. 18	39.22	July 7	38.71	Dec. 3	39.20
Jan. 18, 1938	35.13	July 27	38.56	Jan. 21, 1941	39.26
Feb. 24	37.19	Aug. 14	38.02	May 27	38.65
Mar. 17	37.15	Sept. 13	38.01	Aug. 12	38.62
Apr. 23	37.17	Nov. 3	38.18	Nov. 13	38.50
May 26	37.38	Dec. 5	38.09	Apr. 7, 1942	39.59
June 29	37.78	Jan. 15, 1940	38.46	Aug. 5	41.32
July 28	37.39	Feb. 22	38.75	Dec. 1	37.14
Aug. 24	37.40	Feb. 23	38.75	Apr. 27, 1943	37.99
Sept. 19	37.03	Mar. 19	38.94	Aug. 30	37.89
Oct. 28	37.73	Apr. 25	39.81	Dec. 17	39.07
Dec. 10	37.05	May 21	38.21	May 3, 1944	39.61
Jan. 26, 1939	37.23	June 19	38.08	Aug. 18	40.42

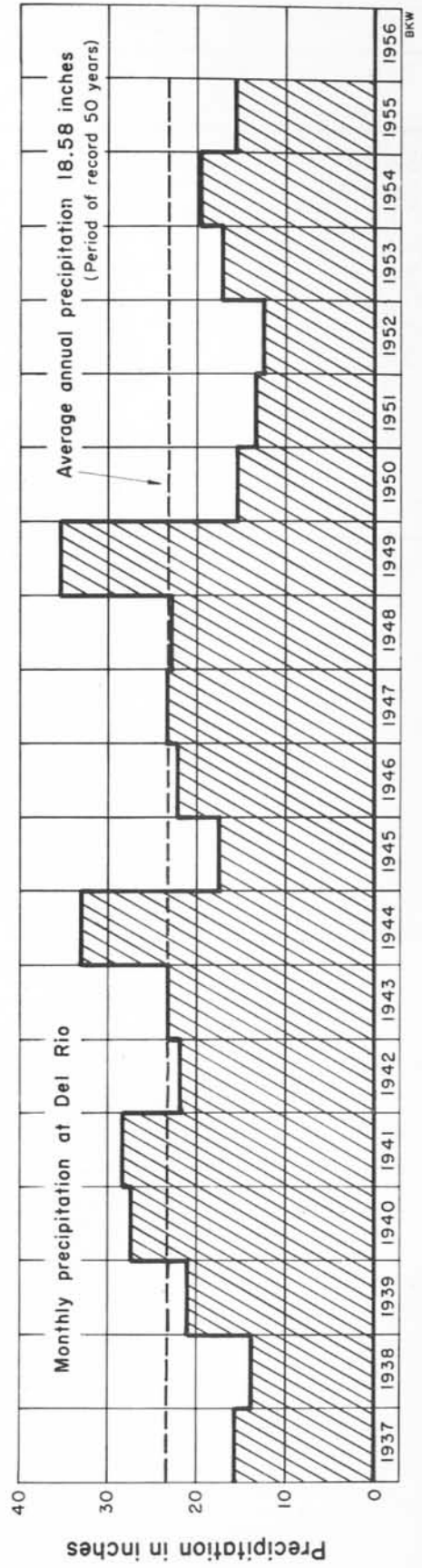
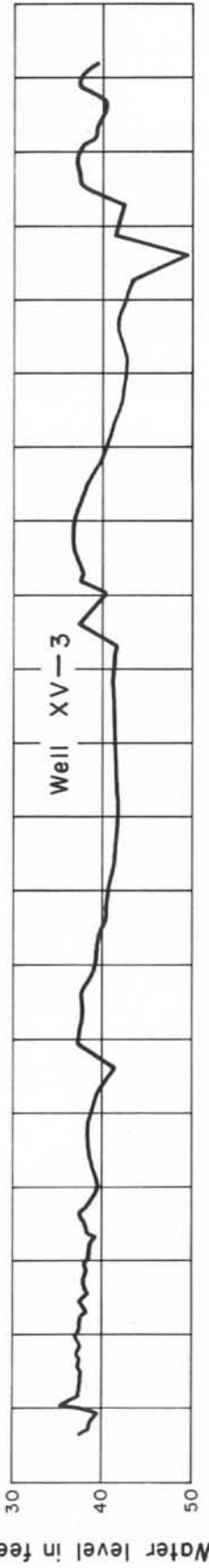
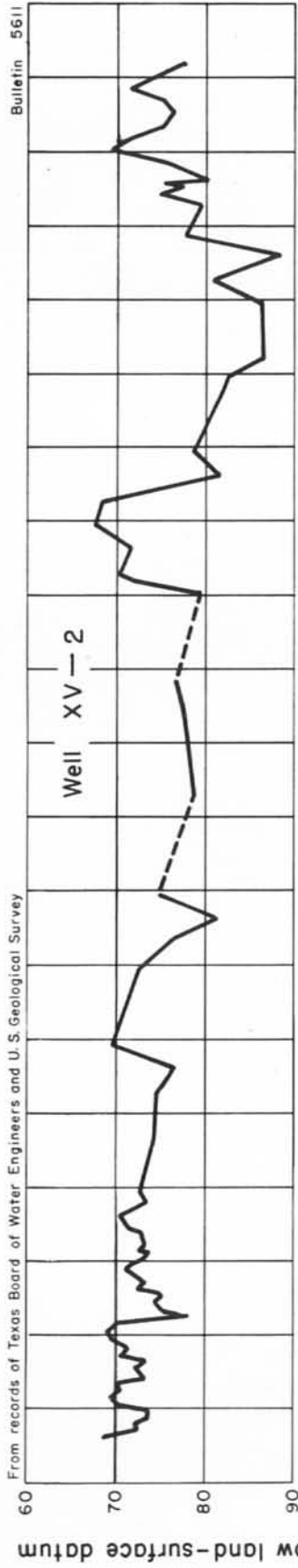
(Continued on next page)

69
VAL VERDE COUNTY

XV-3.- Continued

Date	Water level	Date	Water level	Date	Water level
Dec. 23, 1944	40.38	Aug. 10, 1950	38.19	July 13, 1954	37.86
June 5, 1945	41.60	Dec. 7	40.12	July 21	37.57
Apr. 2, 1946	41.95	Aug. 15, 1951	42.08	Aug. 22	37.69
June 24, 1947	41.48	Dec. 19	42.65	Nov. 10	37.19
Nov. 3	41.07	Mar. 14, 1952	42.75	Jan. 13, 1955	37.63
Apr. 20, 1948	41.95	Aug. 7	41.74	Mar. 11	39.19
Aug. 10	37.10	Sept. 12	41.70	May 12	39.83
Jan. 8, 1949	40.09	Dec. 3	42.10	July 12	40.39
Mar. 8	37.46	Apr. 7, 1953	43.20	Sept. 12	40.64
Apr. 14	37.81	Aug. 10	49.86	Nov. 10	37.74
Aug. 27	36.90	Nov. 18	41.35	Jan. 11, 1956	37.91
Dec. 20	36.86	Apr. 12, 1954	42.65	Mar. 13	39.86
Apr. 5, 1950	37.30	June 1	39.85		

b Pumped recently.



Hydrographs of water levels in wells, Val Verde County, and annual precipitation at Del Rio, Tex.

