

# Collect and Evaluate Baseline Information

## 1. Completed Studies

GIS Database of Historic Data/Studies

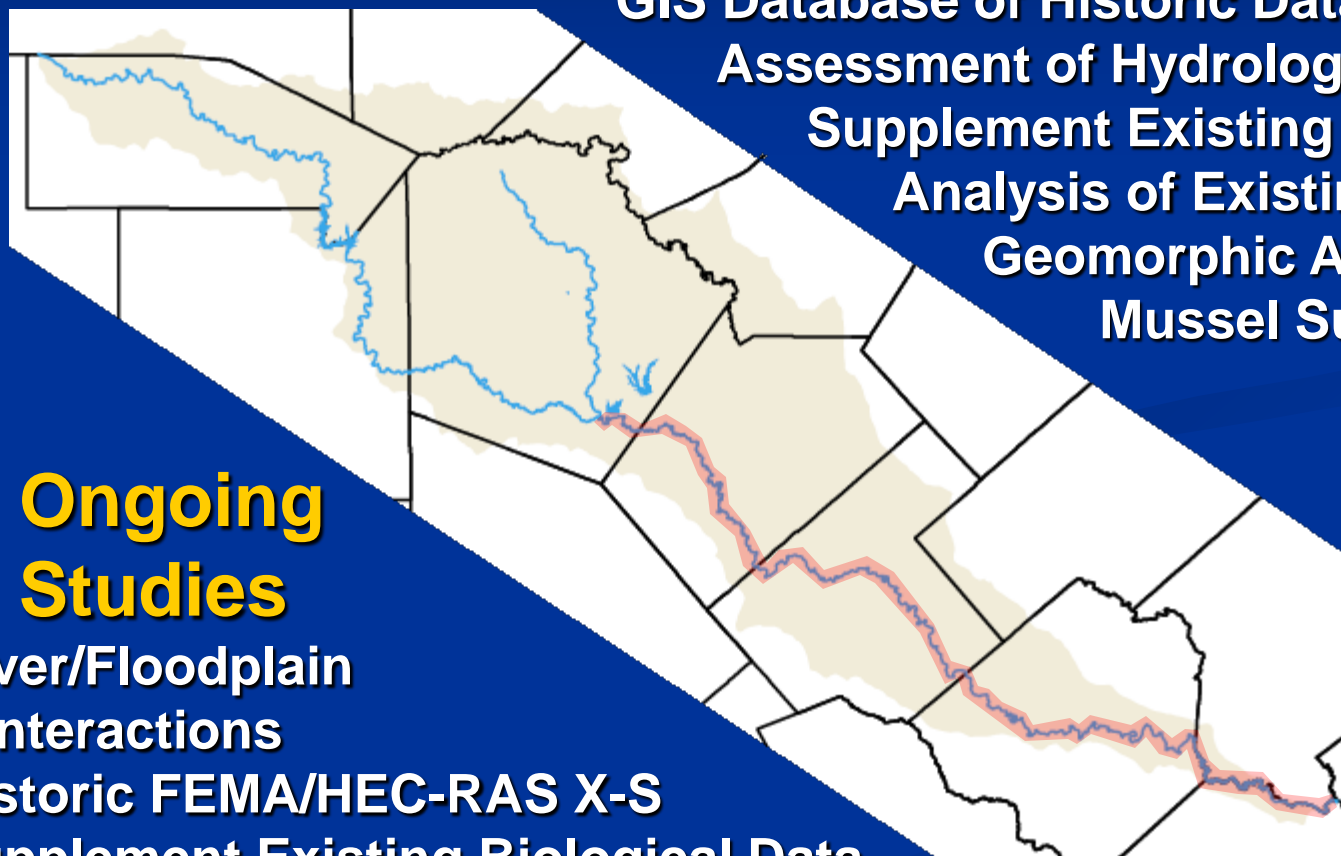
Assessment of Hydrologic Software

Supplement Existing Biological Data

Analysis of Existing Biological Data

Geomorphic Assessment

Mussel Survey



## 2. Ongoing Studies

River/Floodplain  
Interactions

Historic FEMA/HEC-RAS X-S

Supplement Existing Biological Data

<http://www.twdb.state.tx.us/instreamflows>

# GIS Database of Historical Data

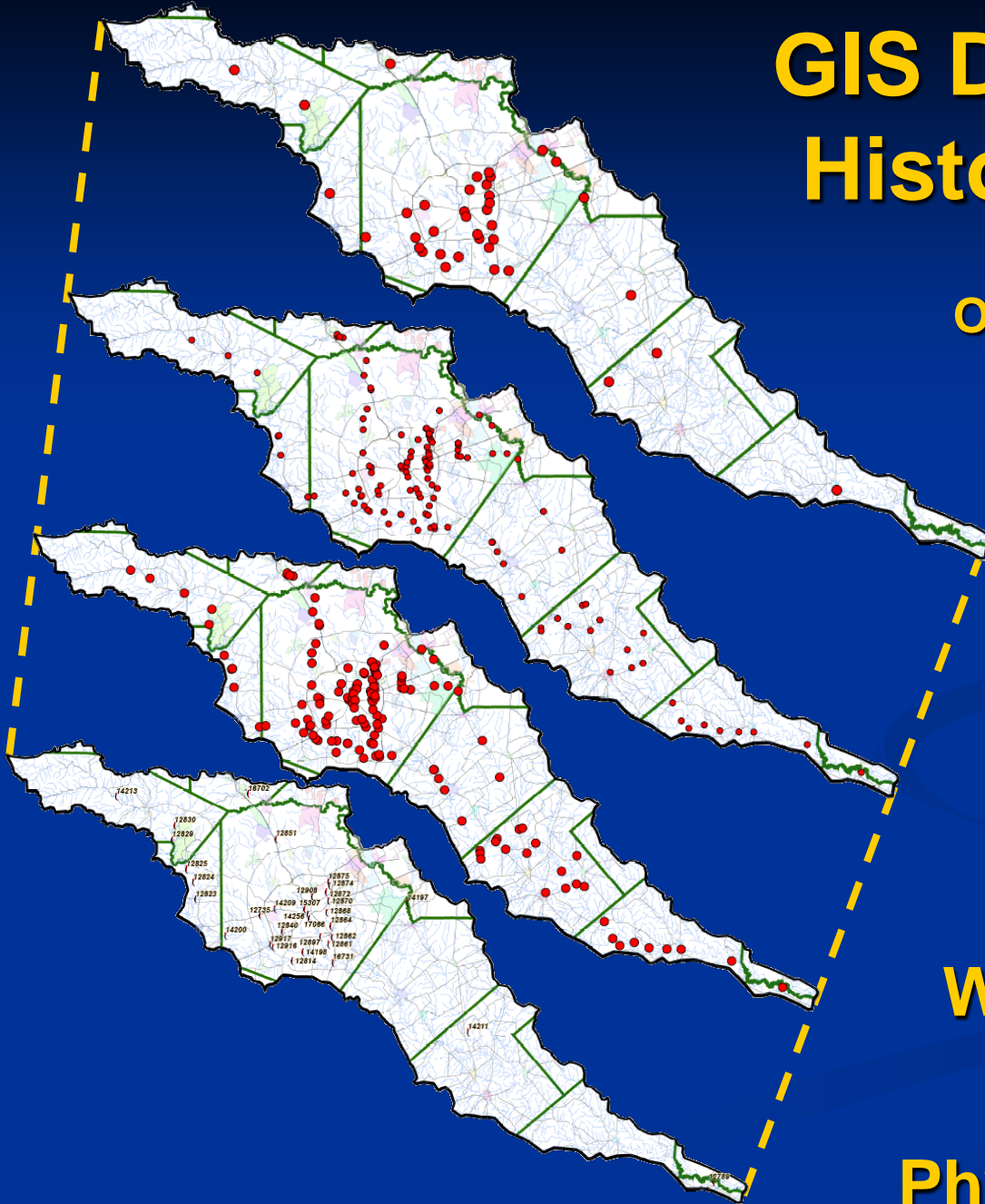
SARA-TX  
October 2005

Biology

Hydrology

Water Quality

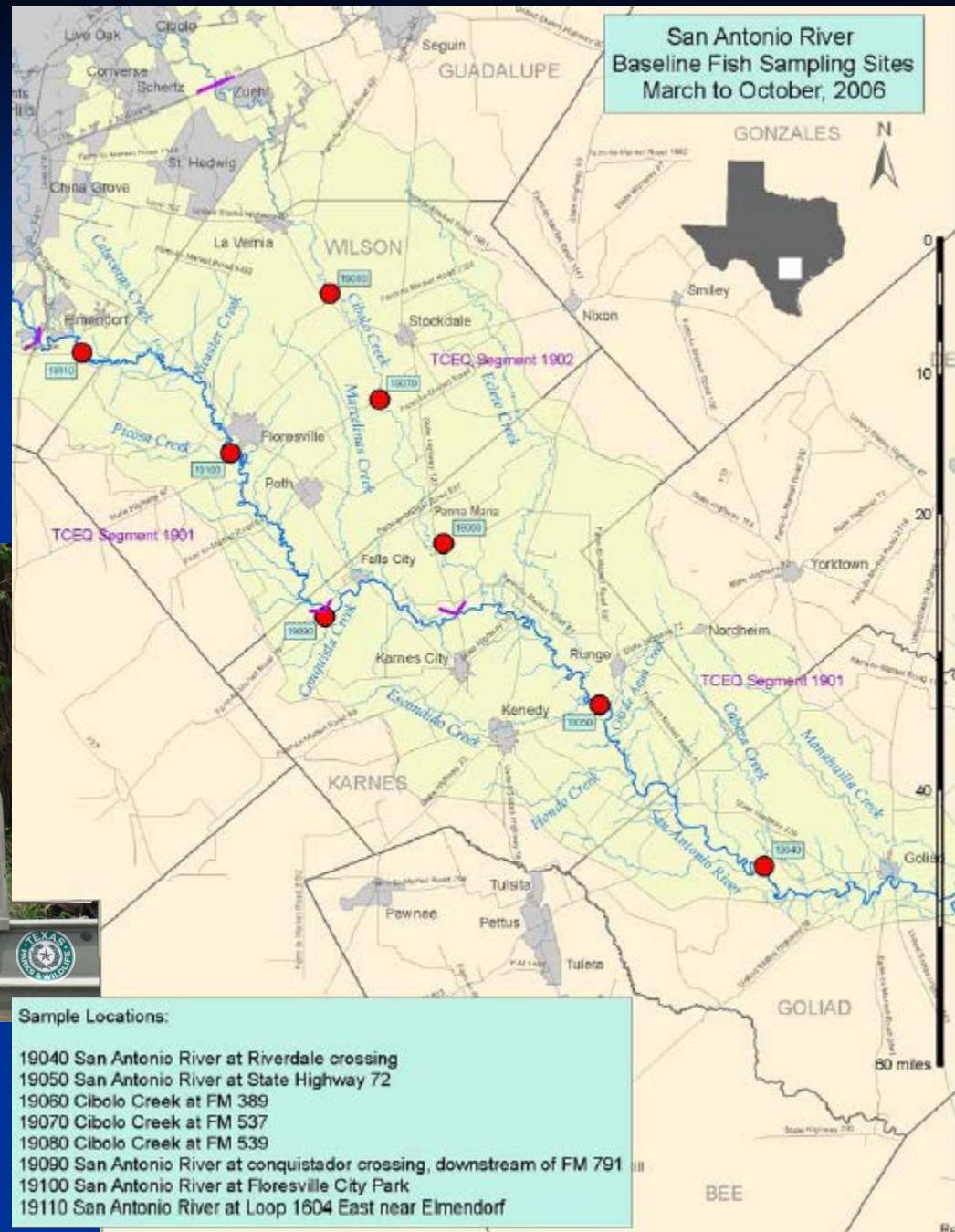
Physical Habitat





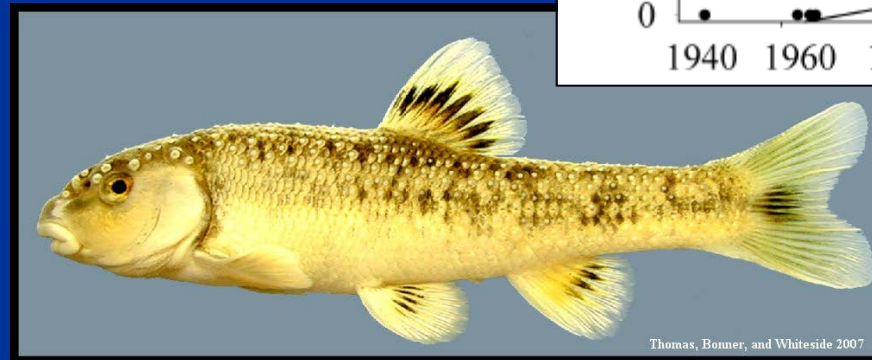
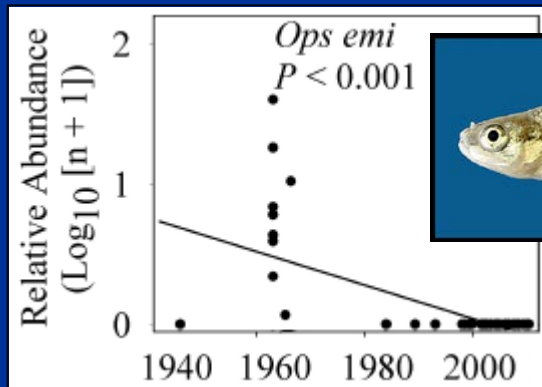
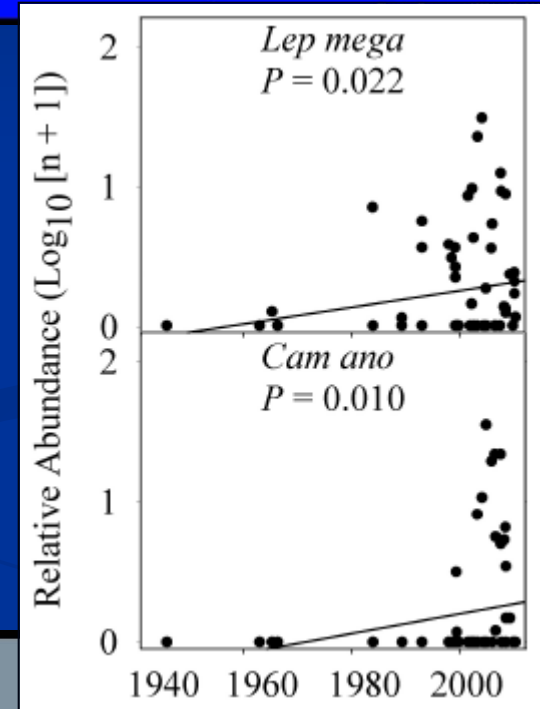
# Supplement Existing Biological Data

SARA & TPWD  
December 2006

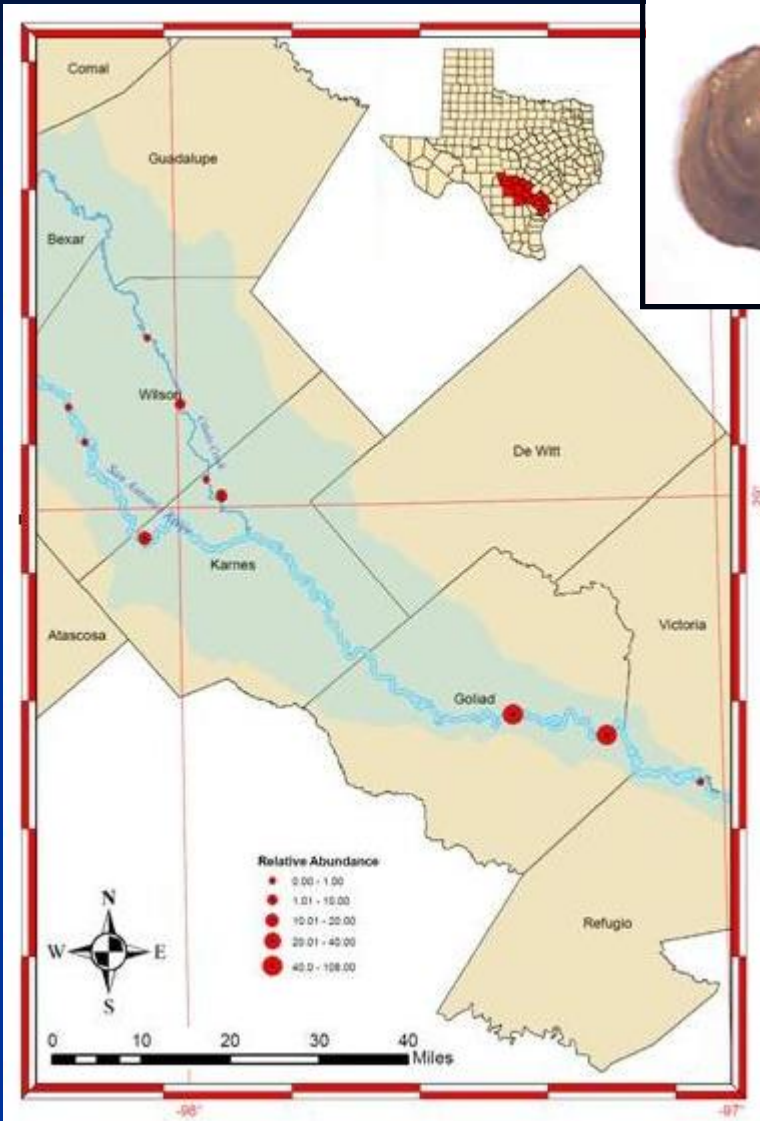


# Analysis of Existing Biological Data

Bonner, TSU  
July 2007







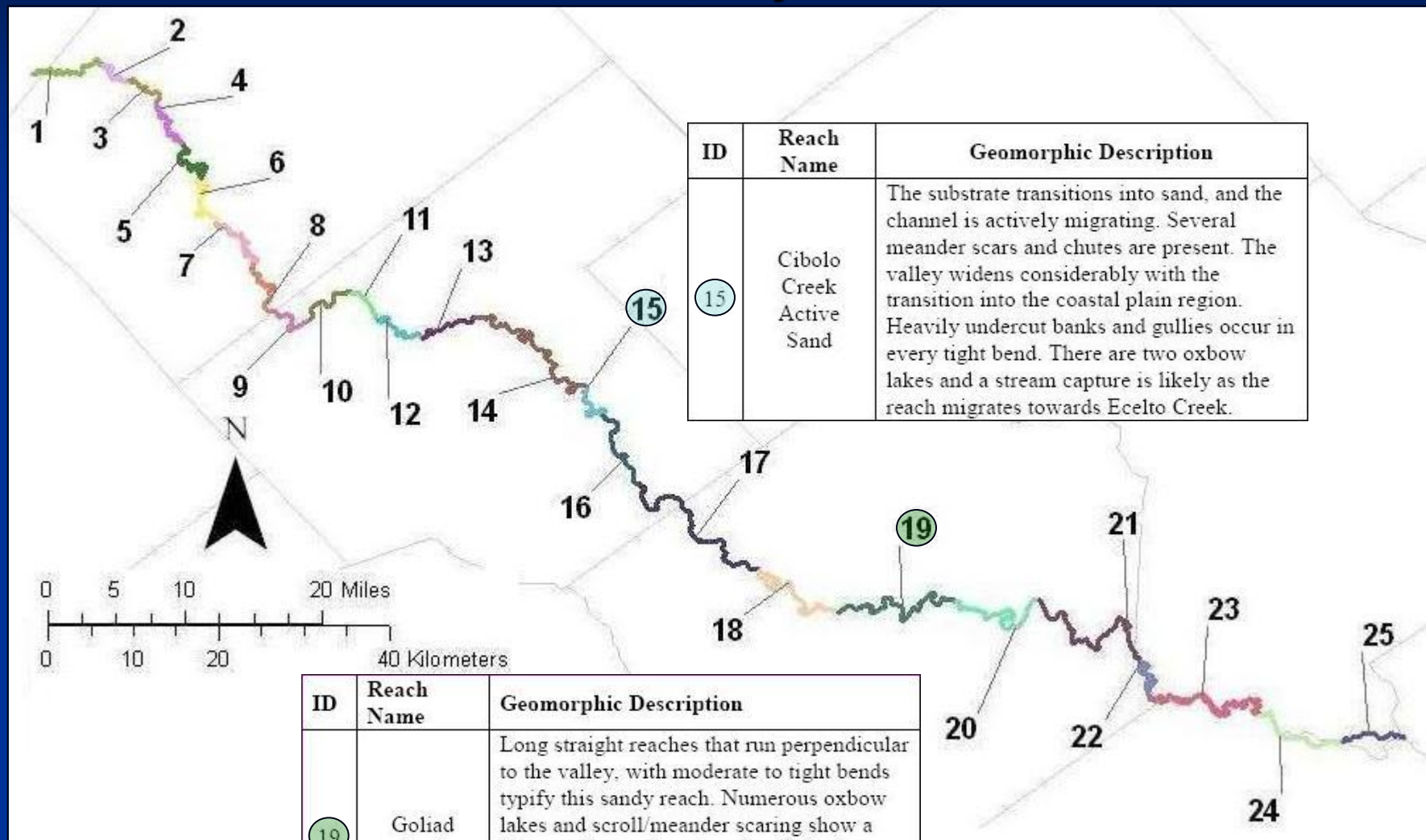
# Mussel Survey

Karatayev & Burlakova, SFASU  
2007



# Geomorphic Classification

Curran, May 2008



# Hydrology & Water Quality Modeling

USGS  
2003



In cooperation with the San Antonio Water System

## Simulation of Streamflow and Estimation of Streamflow Constituent Loads in the San Antonio River Watershed, Bexar County, Texas, 1997–2001

Water-Resources Investigations Report 03–4030



U.S. Department of the Interior  
U.S. Geological Survey

