

Please do not destroy or throw away this publication.  
If you have no further use for it, write to the State  
Board of Water Engineers, Austin, requesting return  
postage.

\* \* \*

TEXAS

\* \* \*

STATE BOARD OF WATER ENGINEERS

C. S. Clark, Chairman  
A. H. Dunlap, Member  
J. W. Pritchett, Member

\* \* \* \*

GILLESPIE COUNTY, TEXAS

Records of wells, drillers' logs,  
and water analyses,  
and maps showing location of wells.

\* \* \* \* \*

WORKS PROGRESS ADMINISTRATION

GROUND-WATER SURVEY

PROJECT 2088

Elgean Shield  
Project Superintendent

\* \* \* \* \*

Analyses made, maps prepared, data  
assembled, and report mimeographed by  
WORKS PROGRESS ADMINISTRATION  
PROJECT 6507-5112

\* \* \* \* \*

Sponsored by the State Board of Water Engineers with  
the Bureau of Industrial Chemistry of The University  
of Texas and the U. S. Geological Survey cooperating.

\* \* \* \* \*

Austin, Texas  
June 10, 1937

GILLESPIE COUNTY, TEXAS

\* \* \*

Introduction

by  
Samuel F. Turner  
Associate Hydraulic Engineer  
U. S. Geological Survey

The purpose of this survey was to obtain information concerning existing wells and springs and the quantity and quality of water they yield.

This project was part of a statewide Works Progress Administration project known as a "Statewide Inventory of Water Wells", sponsored by the State Board of Water Engineers. The Division of Ground Water of the U. S. Geological Survey cooperated in the technical direction of the project and the Bureau of Industrial Chemistry of The University of Texas furnished laboratory space and equipment and supervised the chemical analyses.

The analyses were made by chemists employed on Works Progress Administration Project 6507-5112 at Austin, Texas, sponsored by the State Board of Water Engineers. This release was typed and assembled by typists and draftsmen employed on this project.

The field work in Gillespie County was started on January 28, 1936, and completed on June 9, 1936. This project was Project 2088 of District 14 of the Works Progress Administration, Brownwood, Texas. Elgean Shield, a geologist, was project superintendent. Mr. Shield deserves credit for his work and for the many extra hours he spent on the project. The Brownwood office of the Works Progress Administration made this work possible by their constant help and cooperation.

This release contains the well and spring records obtained by the project superintendent and the chemical analyses of water from privately owned wells and springs. Locations of all wells and springs listed are shown on the folded map in the back of the release.

Records of wells in Gillespie County, Texas

(All wells are drilled or bored unless otherwise noted in "Remarks" column.)

No.	Distance from Harper	Owner	Driller	Date completed	Altitude above sea level <u>a/</u>	Depth of well (ft.)	Diameter of well (in.)	Height of measuring point above ground (ft.) <u>a/</u>
1	14½ miles north	J. M. Diuden	Chas. Boedder	1900	--	110	6	1
2	do.	Walter Itz	--	1910	--	152	6	--
3	14 miles north	Archie Geistweidt	-- Brown	--	--	120	6	0
4	do.	A. F. Faucht	--	--	--	123	6	0
5	do.	Adolph Evers	-- Sellards	--	--	185	6	1.5
6	do.	E. L. Gross	--	1930	--	880	7	--
7	15 miles north	Jake Geistweidt	--	1929	--	70	6	--
8	do.	John Geistweidt	-- Miller	--	--	241	6	--
9	16 miles north	Adolph Sattler	--	--	--	Spring	--	--
10	15 miles north	Arnold Rode	-- Miller	--	--	60	6	--
11	do.	Mrs. Julius Lange	--	--	--	Spring	--	--
<u>e/</u> 12	15½ miles northwest	Ruben Nixon	-- Page	--	--	54	6	--
<u>e/</u> 13	17½ miles northwest	Mrs. Julius Lange	--	--	--	Spring	--	--
14	16½ miles northwest	Chas. Lekmann	-- Davis	1880	--	41	6	1
15	16 miles northwest	Eddie Hahn	-- Schultz	--	1,810	121	6	1
<u>e/</u> 16	16½ miles northwest	Fred Hahn	-- Miller	1900	--	121	6	--
<u>e/</u> 17	15½ miles northwest	Chas. Lehmann	Oscar Miller	--	1,796	165	6	--
18	15 miles northwest	W. M. Rosenbusch	W. M. Rosenbusch	--	1,800	106	6	1
19	do.	do.	--	--	1,788	95	6	1
20	13½ miles northwest	Henry Baethge	Bob Owens	--	1,710	740	6	0.5
21	do.	do.	--	--	1,711	200	6	1
22	do.	Will Baethge	Ernest Schmidt	--	1,725	184	6	0.5
23	do.	Alfred Duerst	-- Sellards	1907	1,755	79	6	0.5
24	13 miles northwest	John Berener	--Foerster	1923	1,755	870	6	--

a/ Altitudes obtained by barometric reading.

b/ Measuring point was usually top of casing, top of pump base, top of well curb, or top of casing clamp.

c/ C, cylinder; B, bucket; W, windmill; H, hand; G, gasoline engine; E, electric motor; number indicates horsepower.

Records obtained by Elgean Shield, Project Superintendent.  
(Chemical analyses of water from these wells are in the table of analyses.)

No.	Water Level		Pump and power <u>c/</u>	Use of water <u>d/</u>	Remarks
	Depth below measuring point (feet)	Date of measurement			
1	66.5	Mar. 5, 1936	C,W	D	Stone block curb. Never fails. Water reported from sand.
2	--	--	C,W	--	Never fails. Water reported from sand.
3	100.5	Mar. 4, 1936	C,W	D,S,I	Do.
4	108	do.	C,W	D,S,I	Good quality water reported from sand.
5	172.8	Mar. 5, 1936	C,W	S	Dry hole 20 feet south, 98 feet deep. Water reported from sand.
6	170	f/	C,W	D,S	Never fails. First water at 90 feet. Estimated capacity 10-15 gallons a minute.
7	16.8	Mar. 4, 1936	C,W	S,I	Never fails.
8	40.5	do.	C,W	D,S	Never fails. 6 inch galvanized iron casing.
9	Flows	do.	None	D,S,I	Never fails. Strong after rains. Water reported from limestone. Temperature 60°F.
10	31.2	do.	C,W	S	Never fails. Water reported from sand.
11	Flows	do.	None	D,S,I	Estimated flow; 300 gallons a minute from 2 openings in limestone conglomerate. Never fails.
12	42.5	do.	--	D,S,I	Never fails. 6 inch galvanized iron casing. Water reported from sand.
13	Flows	Mar. 6, 1936	None	D,S,I	Estimated flow, 300 gallons a minute, from 2 openings in fractured rock. Never fails. Temperature
14	17	Feb. 29, 1936	C,W	D	Concrete block curb. Never fails. Water reported from sand. 65°F.
15	91.7	do.	C,W	D	Concrete block curb; 6 inch galvanized iron casing. Reported red clay at bottom of well. Never fails.
16	--	--	C,W	D,S	Water reported from sand. 6 inch galvanized casing. Never fails.
17	148	Feb. 29, 1936	C,W	S	Do.
18	99.5	do.	C,W	D	Gravel from 100 feet to 106 feet. Seep of water from red clay at 50 feet. Never fails.
19	90	do.	C,C, 5	Ind	Concrete block curb; 6 inch galvanized iron casing. Water reported from sand.
20	27	do.	C,W	S	Concrete block curb; 6 inch galvanized casing. Weak supply.
21	44.5	do.	C,W	--	Concrete block curb. Rock at 40 feet. Never fails. Water reported from sand.
22	56.5	do.	C,W	--	Concrete block curb; 6 inch galvanized iron casing. Never fails. Water reported from sand.
23	59	Mar. 10, 1936	C,W	D	Water from sand at bottom. Well caved at 36 feet. 6 inch casing to 68.5 feet.
24	36.2	Mar. 11, 1936	C,W	D	Reported formerly flowed, 50 gallons a minute from a depth of 90 feet when drilled in 1923.

d/ I, irrigation; Ind, industrial; P, public; D, domestic; S, stock; N, not used  
e/ No water sample collected for analysis.  
f/ Water level reported.

## Records of wells in Gillespie County--Continued.

No.	Distance from Harper	Owner	Driller	Date completed	Altitude above sea level (ft.)	Depth of well (ft.)	Diameter of well (in.)	Height of measuring point above ground (ft.)
25	8 miles north	Louis Seiter	--	Old	1,901	198	6	1
26	8½ miles north	do.	Milton Vater	1936	1,908	202	6	1
27	do.	Hahn Brothers	-- Leyendecker	--	1,884	114	6	--
28	7½ miles north	Carl Kroll	Walter Foerster	1923	--	200	6	0.5
29	12½ miles northwest	Oscar Weinheimer	Wm. Schuch	Old	--	271	6	0.5
30	12½ miles west	Gus Weinheimer	-- Leyendecker	1910	--	128	6	1
31	Lot 17 In Harper	L. M. Wilson	--	Old	--	82	6	0
32	Near Blk. A In Harper	Sam McCaleb	--	--	--	81	6	0.2
33	Lot 30 In Harper	E. Markwordt	--	Old	--	69	6	--
34	Lot 8 In Harper	Arthur S. Baumann	--	--	--	62	6	--
e/35	Lot 7 In Harper	Chas. Keller	--	Old	--	72	--	0.5
36	Lot 5 In Harper	Willie Kaiser	--	Old	--	54	6	0.5
37	Lot 2 In Harper	Mrs. E. Hickson	--	--	--	64	6	0.5
e/38	Lot 1 In Harper	O. W. Sageser	--	1900	--	77	6	0.5
39	½ mile west	Walter Bierschwale	--	--	--	81	6	0
40	1 mile west	Oscar Fiedler	--	Old	--	120	6	0.5
41	4 miles west	John Heinemann	--	--	--	246	6	1
42	3¼ miles southwest	Bette Markwordt	--	--	--	211	8	0.5
43	5 miles southwest	A. H. Kaiser	--	1906	--	251	8	1.5
44	3½ miles southwest	Henry Moellendorf	--	1908	--	200	6	1
45	½ mile south	Fred Gammenthaler	--	Old	--	114	6	1
46	do.	Mrs. Tom McDougal	--	Old	--	122	8	0.5
46a	do.	Fred Gammenthaler	--	Old	--	Spring	--	--
e/47	2 miles southwest	Louis Feller	--	--	--	do.	--	--
48	2¼ miles southeast	August Ernest	--	--	--	do.	--	--
49	2½ miles southeast	Louis Feller	--	Old	1,950	89	6	--
50	3¾ miles southeast	August Ernest	-- Leyendecker & Walter Foerster	1920	1,929	283	6	1

## Elgean Shield, Project Superintendent.

No.	Water Level		Pump and power c/ d/	Use of water d/	Remarks
	Depth below measur- ing point (feet)	Date of measure- ment			
25	180.6	Mar. 10, 1936	C,W	D,S	Stone curb. Never fails. Water level measured while pumping. Water reported from sand.
26	185.7	do.	None	D	Concrete block curb; 6 inch galvanized casing. Water reported from sand. <u>New well, not tested.</u>
27	71.7	do.	C,W	D,S	Concrete block curb; 6 inch galvanized iron casing. Never fails. Water reported from sand.
28	187.2	do.	C,W	D,S,I	Stone curb; 6 inch galvanized iron casing. Never fails. Water reported from sand.
29	194.8	Mar. 12, 1936	C,W	D,S	Concrete block curb; 6 inch galvanized iron casing. Never fails. Water reported from sand.
30	90.8	do.	C,W	D,S	Wood curb; 6 inch galvanized iron casing. Never fails. Water reported from sand.
31	60.8	Feb. 19, 1936	C,W	D	Never fails. 6 inch galvanized casing. Reported water from flint bed.
32	71.4	do.	C,W	D	Concrete block curb; 6 inch galvanized iron casing. Never fails. Water reported from flint bed.
33	60	f/	C,W	D	Crooked hole. Never fails. Casing broken. Water reported from flint bed.
34	50.5	Feb. 19, 1936	C,W	D	Rock curb. Never fails. Water reported from flint bed.
35	52.1	do.	C,W	D	Concrete block curb. Never fails. <b>Water reported from flint bed.</b>
36	51.1	do.	C,W	D	Never fails. Good quality water reported from flint bed.
37	46	do.	C,W	D	Concrete block curb. Never fails. <b>Water reported from flint bed. Blue slate from 60 feet to bottom.</b>
38	18.7	do.	C,W	D	Water from blue slate at 58 to 62 feet. Reported pumps dry at 10 gallons a minute. Weak supply.
39	60.1	Mar. 17, 1936	C,W	D,S	Wood block curb. Water from limestone reported.
40	85.7	do.	C,W	D,S	Stone block curb; 3 feet, 6 inch galvanized iron casing at top. Water level measured while pumping.
41	166	do.	C,W	D	Reported pumps dry in 8 hours at 3 gallons a minute. Reported nearly fails in drought. Never fails.
42	191.2	do.	C,W	D	Stone block curb. Never fails. Water reported from limestone.
43	220.5	do.	C,W	D,S,I	Concrete block curb; 8 inch galvanized iron casing. Never fails. Supplies 350 goats. Irrigates 2 acres.
44	198	do.	C,W	D,S,I	Stone block curb. Never fails. Reported pumps dry in 3 hours.
45	56.8	do.	C,W	D,S	Concrete block curb. Never fails. Water reported from limestone.
46	36.7	do.	C,W	D,S	Stone block curb; 8 inch galvanized iron casing. Never fails. Chalk reported in bottom.
46a	Flows	Feb. 19, 1936	None	D	Estimated flow; 3 gallons a minute from limestone. Fails in summer. Temperature 60°F.
47	Flows	Feb. 13, 1936	None	D	Estimated flow, 1,000 gallons a minute from limestone. Never fails. Temperature 60°F.
48	Flows	Feb. 19, 1936	None	N	Intermittent spring from base of limestone at contact with shale.
49	34.8	Mar. 13, 1936	C,W	D	Rock curb; 65 feet, 6 inch galvanized casing at top. Never fails.
50	231.5	do.	C,W	D	Cut stone curb; 6 inch galvanized casing, top to bottom. Never fails. Water reported from sand.

## Records of wells in Gillespie County--Continued

No.	Distance from Harper	Owner	Driller	Date completed	Altitude above sea level a/	Depth of well (ft.)	Diameter of well (in.)	Height of measuring point above ground (ft.) b/
51	6 miles southeast	August Richner	Edgar Moslel	1917	1,970	190	6	1
e/ 52	9 $\frac{1}{2}$ miles southeast	Adam Stehling	--	--	--	119	6	0.5
53	10 miles southeast	Jake Roeder	--	Old	--	170	6	0.5
54	10 $\frac{1}{2}$ miles southeast	Chas. H. Roeder	--	--	1,819	87	6	0.5
55	do.	Chas. Roeder	--	--	1,849	151	6	0.5
56	do.	Emil Fritz	--	1900	1,850	190	6	0
57	12 miles southeast	Herman Juenk	-- Leyendecker	Old	1,829	136	6	0.5
58	do.	Klein Est.	Adolph Usener	1925	--	99	6	0.5
e/ 59	12 $\frac{1}{2}$ miles southeast	Willie Zenner	do.	Old	--	89	6	0
60	do.	W. T. Zenner	John Griffin	1905	--	100	6	0
61	do.	Morris Land Co.	--	--	--	68	6	3
62	12 miles southeast	do.	--	--	--	117	--	0.5
63	do.	Andrew Brandon	Chas. Leyendecker	--	--	186	6	0.5
64	do.	August Lott	Rouse & Hermann	1900	--	152	6	--
65	11 $\frac{1}{2}$ miles southeast	Mrs. Laura Weigand	--	Old	--	228	6	0.5
66	10 $\frac{1}{2}$ miles southeast	Edwin Pfiester	--	Old	--	134	6	0.5
67	do.	W. M. Roeder	-- Schultz	1935	--	236	--	0.5
68	10 miles south	Mrs. W. A. Peril	Walter Middleton	1854	--	133	6	1
69	9 $\frac{1}{2}$ miles south	-- Dittmar	--	--	--	137	6	1
70	7 miles south	Mrs. C. A. Spencer	--	--	--	39	8	0.5
71	6 $\frac{1}{2}$ miles south	Mr. C. A. Spencer	Max Scarborough	1934	--	62	6	0.5
72	do.	Lewis Stevens	--	--	--	75	6	1
73	6 miles south	do.	--	1900	--	48	6	0.5
74	5 $\frac{1}{2}$ miles south	do.	--	1933	--	66	6	0.5
e/ 75	4 $\frac{1}{2}$ miles south	W. H. Stevens	--	--	--	Spring	--	--
75a	do.	do.	--	--	--	96	--	--

## Elgean Shield , Project Superintendent.

No.	Water Level		Pump and power <u>c/</u>	Use of water <u>d/</u>	Remarks
	Depth Below measuring point (feet)	Date of measurement			
51	177.4	Mar. 13, 1936	C,W	D	Round concrete block curb; 6 inch galvanized casing, top to bottom.
52	60	Mar. 20, 1936	C,W	S	Never fails. Stone block curb; 6 inch galvanized casing. Water reported from limestone.
53	156	Mar. 13, 1936	C,W	D	Cut stone curb; 6 inch galvanized casing. Measured while pumping. Never fails. Water reported from
54	65.2	do.	C,W	D	Cut stone curb; 6 inch galvanized casing. <u>sand.</u> Water reported from <u>sand.</u>
55	127.1	do.	C,W	D	Do.
56	142.6	do.	C,W	D	Wood curb; 6 inch galvanized casing. Filled 5,000 gallon tank in 1/2 day. Red sand reported at bottom.
57	90.2	do.	C,W	D	Stone block curb; 6 inch galvanized casing. Water reported from sand. Never fails.
58	70.2	Mar. 20, 1936	C,W	D,S	Concrete block curb; 6 inch galvanized casing, top to bottom. Never fails. Clay reported at surface.
59	43	do.	C,W	S	Never fails. Water reported from sand. <u>Water reported from sand.</u> 6 inch galvanized casing, top to
60	83.6	do.	C,W	D	Do. <u>bottom.</u>
61	43.3	do.	C,W	S	Reported bitter taste. 6 inch steel casing. Weak supply. Water reported from sand.
62	72.5	do.	C,W	S	Concrete block curb; Clay at surface. Never fails.
63	136.5	do.	C,W	D,S	Stone block curb; 6 inch galvanized casing. Water reported from sand.
64	40	f/	C,W	D	Never fails. 6 inch galvanized casing. Clay at surface. Water reported from sand.
65	206.5	do.	C,W	D	Stone block curb; 6 inch galvanized casing. Never fails. Well finished in red sand.
66	72.7	do.	C,W	D,S	Concrete block curb; 6 inch galvanized casing. Never fails. Water reported from sand.
67	194	Mar. 19, 1936	C,W	D,S	Stone block curb, Never fails. Water reported from sand.
68	124.5	do.	C,W	D,S	Wood block curb; 120 feet, 6 inch iron casing at top. Reported white sand in bottom. Well drilled
69	--	do.	C,W	D,S	Wood curb; 6 <u>horsepower</u> <u>g.g.</u> Never fails. 6 inch galvanized casing. Dug well, 36 feet deep, with drilled well in bottom. Water reported from lime-
70	8.2	do.	C,W	D,S	Wood block curb; 8 inch galvanized casing. <u>stone.</u> On bank of Stevens Creek. Water reported from lime-
71	13.5	do.	C,W	S	Stone block curb; 6 inch galvanized casing. <u>stone.</u> First water at 20 feet but main supply at 60 feet.
72	36.1	do.	C,W	S	Concrete curb; 6 inch galvanized iron casing. Water reported from limestone. Never fails.
73	13.2	do.	C,W	D	Wood block curb; 6 inch steel casing. <u>from limestone.</u> Caving sand and water at 14 feet reported.
74	55.5	do.	C,W	D	Concrete curb; 6 inch galvanized iron casing. Water reported from limestone. Never fails. Water level
75	Flows	Mar. 17, 1936	None	D,S	On Indian Creek, $\frac{1}{2}$ mile <u>measured while pumping.</u> west of Harper-Kerrville road. Never fails. Flow varies with seasons. Estimated flow, 50 gallons a
75a	--	--	None	N	Abandoned oil test. <u>minute from limestone.</u>



## Records of wells in Gillespie County--Continued

No.	Distance from Harper	Owner	Driller	Date completed	Altitude above sea level a/	Depth of well (ft.)	Diameter of well (in.)	Height of measuring point above ground (ft.) b/
76	2 miles south	Fred Rahe	--	--	--	190	8	1.5
No.	Distance from Fredericksburg	Owner	Driller	Date completed	Altitude above sea level a/	Depth of well (ft.)	Diameter of well (in.)	Height of measuring point above ground (ft.) b/
100	19 $\frac{1}{2}$ miles northwest	Adolph Marshall	--	1900	1,778	45	6	--
101	do.	Henry Keyser	--	1870	1,789	38	6	--
102	do.	F. W. Lange, Est.	--	--	1,782	56	6	1
103	do.	Willie Mund	-- Owens	--	--	162	6	0.5
104	18 $\frac{1}{2}$ miles northwest	Archie Mund	--	--	1,753	33	6	--
105	18 miles northwest	Willie Mund	--	--	1,753	78	6	1
106	do.	Otto Hahn	--	--	1,833	129	6	1
107	15 miles northwest	Anton Weinheimer	Willie Schuch	--	--	200	6	--
108	13 miles northwest	Joe Stehling, Sr.	Chas. Leyendecker	1925	--	205	6	--
109	11 $\frac{1}{2}$ miles northwest	W. M. Fiedler	Ernest Petsch	1931	--	212	6	1
110	14 $\frac{1}{2}$ miles northwest	Alfred J. Dittmar	--	1880	--	198	6	1
111	12 $\frac{1}{2}$ miles north	Emil Welgehausen	--	Old	1,832	150	6	--
112	12 miles north	do.	--	--	1,786	59	6	1
113	12 $\frac{1}{2}$ miles north	Henry Bruns	--	Old	1,810	43	6	--
114	10 miles north	Akolph Ochler	--	Old	2,050	134	6	1
115	9 $\frac{1}{2}$ miles north	--	--	--	--	137	6	0.1
116	8 $\frac{1}{2}$ miles northeast	Beno Kramer	--	--	--	84	6	--
117	do.	do.	--	Old	--	65	6	0.5
118	7 $\frac{1}{2}$ miles northeast	Henry King	Eddie Kramer	Old	--	156	6	1
119	6 $\frac{1}{2}$ miles northeast	Mrs. --Jones	--	Old	--	49	6	0.5
120	8 miles north	Emil Dickie	--	Old	--	94	6	1
121	6 miles north	Ruben Durst	--	Old	--	140	6	--
122	6 miles northwest	Adolph Stehling	Robert Rosenbusch	--	1,918	155	6	0.5

a/ Altitudes obtained by barometric reading.

b/ Measuring point was usually top of casing, top of pump base, top of well curb or top of casing clamp.

c/ C, cylinder; B, bucket; W, windmill; H, hand; G, gasoline engine; E, electric

Elgean Shield , Project Superintendent

No.	Water Level		Pump and power <u>c/</u>	Use of water <u>d/</u>	Remarks
	Depth below measuring point (feet)	Date of measurement			
76	100.6	Mar. 17, 1936	C,W	--	Stone block curb; 8 inch galvanized iron casing at top. Weak supply. Blue mud at bottom of well.
No.	Water Level		Pump and power <u>c/</u>	Use of water <u>d/</u>	Remarks
	Depth below measuring point (feet)	Date of measurement			
100	--	--	C,H	D	Never fails. Hole full of roots.
101	29.5	Feb. 29, 1936	C,W	D	Never fails. 6 inch galvanized iron casing.
102	35	do.	C,W	D	Concrete curb; 6 inch galvanized iron casing. Never fails.
103	84	do.	C,W	D,S	Stone block curb; 6 inch galvanized iron casing. Never fails. Water reported from sand.
104	18.8	do.	C,W	D,S	Never fails. 6 inch galvanized iron casing. Water reported from sand.
105	21.6	do.	C,W	D,S	Concrete block curb; 6 inch galvanized iron casing. Never fails. Water reported from sand.
106	114.5	do.	C,W	D	Concrete block curb; 6 inch galvanized iron casing. Surface formation is clay. Never fails.
107	160	Mar. 5, 1936	C,W	D,S,I	Never fails. 6 inch galvanized iron casing. Water reported from sand.
108	165	do.	C,W	--	Water reported from blue and white clay. Never fails. 6 inch galvanized iron casing.
109	116	Feb. 28, 1936	C,W	D	Reported capacity, 10 gallons a minute. Hard rock reported at 5 feet. Reported water level formerly at
110	86	Feb. 29, 1936	C,W	--	Wood block curb; Buff colored clay reported at surface. Never fails. Hard water reported <u>65 feet.</u>
111	78	Apr. 16, 1936	C,W	S	Stone block curb; 6 inch galvanized iron casing. Well drilled near creek. Never fails.
112	53.5	do.	C,W	--	Concrete block curb; 6 inch galvanized iron casing. Reported pumps dry in $\frac{1}{2}$ day. Water reported from
113	40	do.	C,W	--	Concrete block curb. Water reported from <u>sand.</u>
114	114.5	do.	C,W	--	Concrete block curb; 6 inch galvanized iron casing. Weak supply.
115	100	Apr. 16, 1936	C,H	S	Stone block curb; 6 inch galvanized iron casing. Ranch well on top of hill. Flint bed at surface.
116	73.8	Apr. 11, 1936	C,H	D,S	Rock block curb; 6 inch galvanized iron casing. Buff clay at surface. Water reported from sand.
117	56.9	Apr. 17, 1936	C,H	D	Concrete block curb; 6 inch galvanized iron casing. Never fails. Water reported from sand.
118	115.6	Apr. 11, 1936	C,W	D	Reported $5\frac{1}{2}$ joints drop pipe. Can be pumped to bottom of drop pipe in 30 minutes. Water reported from
119	38.3	do.	C,W	D	Wood block curb; 6 inch galvanized iron casing. Never fails. Water reported from <u>sand.</u>
120	92	Apr. 16, 1936	C,W	D	Wood block curb; 6 inch galvanized iron casing. Clay at surface. Can be pumped dry. Water reported from
121	46.7	do.	C,W	D	Stone block curb; 6 inch galvanized iron casing. Never fails. <u>sand.</u>
122	87.5	Feb. 28, 1936	C,W	D	Cut stone block curb; 6 inch galvanized iron casing. Never fails. Water reported from sand.

I/ Irrigation; Ind, industrial; P, public; D, domestic; S, stock; N, not used.

e/ No water sample collected for analysis.

f/ Water level reported.

## Records of wells in Gillespie County--Continued.

No.	Distance from Fredericksburg	Owner	Driller	Date completed	Altitude above sea level a/	Depth of well (ft.)	Diameter of well (in.)	Height of measuring point above ground (ft.) b/
123	8 miles northwest	Margaret Famblin	Willie Schuch	1930	2,037	80	6	0.5
124	11 miles northwest	Henry Bernhardt	Otto Usener	Old	--	213	6	1
125	13 miles northwest	Edwin Reeh	--	--	--	114	6	1
126	7 miles west	Honey Creek, School	--	--	--	79	6	--
127	6½ miles west	Gilbert Loudon	--	--	--	37	72	1
128	4½ miles west	Mrs. Fred Baethge	Chas. Leyendecker	--	--	127	6	0.6
129	4 miles west	Alfred Klaemer	--	Old	--	66	6	--
130	3½ miles west	John Schlandt	--	Old	--	--	36	--
131	3 miles west	John Phillips	Otto Usener	--	--	101	6	1
132	2½ miles west	Edd Schandt	--	Old	--	121	6	1
e/132a	do.	--	Layne-Texas Co.	--	--	48	--	--
133	1 mile northwest	W. E. Smith	--	--	1,771	54	--	1
134	2 miles northwest	William Knopp	-- Krauss	1898	1,793	65	6	0.5
135	do.	do.	Chas. Leyendecker	1912	1,789	66	6	1
136	4 miles northwest	Richard Stehling	-- Stehling	--	1,864	49	36	--
137	4 miles north	Henry Arhelger	--	1910	--	160	6	0
138	do.	Arthur Itz	--	Old	--	36	36	4
139	3½ miles north	Itz Chrome Tannery	Chas. Itz	--	--	49	60	1
140	4 miles north	Palo Alto School	--	Old	--	53	6	0.5
141	3 miles northeast	Henry Franz	--	Old	1,665	51	6	0.2
142	2½ miles east	Alfred Kordziek	--	Old	--	137	6	1
143	2 miles northeast	Alfred Henke	Adolph Usener	1911	1,793	146	6	0.5
144	do.	Herman Schmidt	--	--	1,713	23	72	0
145	1½ miles northeast	Ed Leifeste	-- Leyendecker	--	1,726	59	6	1
146	2 miles northeast	Fritz Langhan	--	Old	--	196	8	0.5
147	do.	Mrs. Alfred Lehue	-- Leyendecker	1920	--	236	6	1
148	1½ miles north	Chas. Klaerner	--	Old	--	24	36	3
149	do.	Louis Rehn	--	1926	--	174	6	1

## Elgean Shield , Project Superintendent

No.	Water Level		Pump and power <u>c/</u>	Use of water <u>d/</u>	Remarks
	Depth below measuring point (feet)	Date of measurement			
123	43.5	do.	C,W	D	Concrete block curb; 6 inch galvanized iron casing. Never fails. Water reported from sand.
124	140	Mar. 12, 1936	C,W	D,S	Stone block curb; 6 inch galvanized iron casing. Never fails. Limestone at surface. Water reported
125	86.5	do.	C,W	D,S	Concrete block curb. Can not be pumped from sand. dry with 3 horsepower engine. Water reported from
126	31.5	Feb. 19, 1936	C,W	D	Located on creek bank. 6 inch galvanized iron casing. Surface formation is clay.
127	33.8	do.	C,H	D	Dug well. Rock curb and casing. Weak supply. Surface formation is clay. Water reported from red sand.
128	38.7	do.	C,W	D	Concrete block curb; 6 inch galvanized iron casing. Never fails.
129	--	--	C,W	D	Well drilled near creek. Water reported from sand. Never fails.
130	87.8	Mar. 12, 1936	C,W	D	Dug well. Wood curb; rock casing. Surface formation in clay. Never fails. Water reported from sand.
131	89.3	do.	C,H	D	Wood block curb; 6 inch galvanized iron casing. Water reported from red sand. Never fails.
132	105	do.	C,W	D	Stone block curb; 6 inch galvanized iron casing. Never fails. Clay at surface. Water reported from
32a	21	--	None	N	Test well No. 7. Coarse sand from 16 to 24 feet. Reported altitude, 1,700 feet. See log.
133	52.5	Feb. 28, 1936	C,W	D	Dug well. Wood curb. Never fails. Good quality, clear water reported.
134	39.9	do.	C,W	D	Stone block curb. Never fails. Water reported from sand.
135	36.5	do.	C,W	D	Stone block curb; 6 inch galvanized iron casing. Never fails. Water reported from sand.
136	38.5	do.	C,W	D	Dug well. Concrete block curb; rock casing. Never fails. Water reported from sand.
137	49.2	Apr. 16, 1936	C,W	D	Never fails. 6 inch galvanized iron casing. Water reported from sand.
138	31	Apr. 11, 1936	C,W	D	Dug well. Wood curb; rock casing. Drawdown reported 18 inches in 24 hours. Water reported from sand.
139	43	do.	C,W, 1 1/2	D	Dug well. Wood curb; rock casing. Reported capacity, 10 gallons a minute.
140	28.3	do.	C,H	S	Concrete block curb. Located 50 feet from creek bank.
141	19.1	Apr. 10, 1936	C,W	D,S	Stone curb; 6 inch galvanized casing. Strong supply. Water reported from sand.
142	108.7	Apr. 8, 1936	C,-	D	Stone curb; 6 inch galvanized casing. Water reported from sand.
143	121.7	Apr. 10, 1936	C,W	Ind	Concrete block curb; 6 inch galvanized casing. Supplies mill. Water reported from clay.
144	14.5	do.	None	S	Dug well. Rock casing. Never fails. Strong supply. Water reported from clay.
145	38.3	do.	C,H	D	Concrete block curb; galvanized 6 inch casing. Never fails. Water reported from sand.
146	81.3	Apr. 12, 1936	C,W	S	Concrete block curb; 8 inch steel casing. Water reported from sand.
147	109	Apr. 11, 1936	C,W	D,I	Concrete block curb; galvanized 6 inch casing. Never fails. Water reported from sand.
148	12.5	do.	C,W	D	Dug well. Stone curb; rock casing. Never fails. Supplies mill. Water reported from sand.
149	83	Apr. 16, 1936	C,W	D,S,I	Concrete block curb; galvanized 6 inch casing. Never fails. Reported water from red sand.

## Records of wells in Gillespie County--Continued

No.	Distance from Fredericksburg	Owner	Driller	Date completed	Altitude above sea level e/	Depth of well (ft.)	Diameter of well (in.)	Height of measuring point above ground (ft.)
150	1 $\frac{3}{4}$ mile north	Gustav Hoff	--	Old	--	92	6	1
151	1 $\frac{1}{4}$ mile north	Jim Evers	-- Leyendecker	Old	--	108	6	1
152	In Fredericksburg	Catholic Cemetery	--	--	--	160	6	0.5
153	do.	W. M. Hitzfeld	-- Leyendecker	--	1,699	137	6	0.3
154	do.	Walter Henke	--	1918	--	101	6	0.2
155	do.	Mrs. Albert Seelig	--	--	--	60	6	0.2
156	do.	August Doell	-- Leyendecker	--	--	92	6	0.5
157	do.	Emil Schoenewalt	--	--	1,714	75	6	0.3
158	do.	Eugene Schmidt	--	1926	1,778	72	6	0.5
159	do.	Hugo Wahl	Chas. Leyendecker	--	1,713	81	6	0.5
160	do.	Mrs. Lewis Bruns	--	--	--	119	6	0.3
161	do.	Louis Koff	-- Leyendecker	--	1,718	418	6	0.5
162	do.	Hugo Kallenberg	Bruno Foerster	--	1,714	125	6	0.1
163	do.	Stein Ice Factory	-- Krese	1906	1,696	80	6	--
164	do.	do.	Chas. Leyendecker	1919	1,697	211	8	1
165	do.	Mrs. Jacob Kraus	Herman Leyendecker	--	--	143	6	1
166	do.	Ben Hagel	--	--	1,689	104	6	0.5
167	do.	Albert Moellendorf	--	--	1,692	29	72	--
168	do.	Ernest Wilke, Sr.	Chas. Leyendecker	--	1,688	48	6	1
169	do.	Turnverein Club	--	--	1,699	34	6	0.3
170	do.	Mrs. Cora Habenicht	Chas. Leyendecker	--	1,698	99	6	0.5

Elgean Shield , Project Superintendent.

No.	Water Level		Pump and power <u>c/</u>	Use of water <u>d/</u>	Remarks
	Depth below measuring point (feet)	Date of measurement			
150	53.9	do.	C,W	D,I	Stone block curb; galvanized 6 inch casing. Strong supply. Reported water from sand.
151	51	do.	C,-	D,I	Concrete block curb; galvanized 6 inch casing. Never fails. Water reported from red sand.
152	49.1 47.8	Apr. 2, May 25, 1936	C,W	I	Stone block curb; galvanized 6 inch casing. Never fails. Water reported from sand.
153	40.5 41.5	Feb. 13, Apr. 2, 1936	C,W	D	Concrete curb; 130 feet galvanized 6 inch casing. Perforated at bottom. Never fails.
154	24.5	Feb. 14, 1936	C,W	D,I	Concrete block curb; 6 inch galvanized iron casing. Never fails. Water reported from sand.
155	23.3	do.	C,H	D,I	Concrete block curb; 6 inch galvanized iron casing. Never fails. Water reported from red sand.
156	18.4 21.1	do. Apr. 2, 1936	C,W	D,I	Do.
157	51.5 38.8	Feb. 14, May 25, 1936	C,W	D	Concrete block curb; 6 inch galvanized iron casing. Never fails.
158	47 49.2	do. May 25, 1936	C,W	D	Rock curb; 6 inch galvanized casing. Never fails. Water reported from sand.
159	41.9 45	Feb. 14, May 25, 1936	C,H	D	Mineral taste reported. 6 inch galvanized pipe curb and casing.
160	19.3	Feb. 14, 1936	C,W	I	Concrete block curb; 6 inch galvanized iron casing. Never fails.
161	33.3	do.	C,W	D	Concrete block curb; 6 inch galvanized iron casing. Never fails. Temperature 70°F.
162	32.5 37.5	Feb. 14, Apr. 2, 1936	C,W	D,I	Concrete block curb; 6 inch galvanized iron casing. Never fails. Water reported from sand.
163	45	<u>f/</u>	C,E	Ind	Water treated with lime and alum to make ice. Never fails. Estimated capacity, 12 gallons a minute from
164	25.2	Feb. 13, 1936	C,E, 2	Ind	Never fails. 8 inch galvanized iron casing. sand. Perforated 100 feet from bottom.
165	35.3	Feb. 14, 1936	C,E, 3/4	Ind	Concrete block curb; 6 inch galvanized iron casing from 97, to 143 feet. Never fails. Reported water
166	22.8	Feb. 8, 1936	C,W	D	Concrete block curb; 6 inch galvanized iron casing. sand from 90 to 140 feet. Never fails. Water re-
167	23.7 25.6 26.7	Feb. 7, Apr. 2, May 25, 1936	None	N	Dug well. Rock casing. Water re-ported from sand.
168	19.3	Feb. 7, 1936	C,W	D	Concrete block curb; 6 inch galvanized iron casing. Nearly fails in drought.
169	23.8 23.8	Feb. 13, Apr. 2, 1936	C,W	I	Rock curb; 6 inch galvanized iron casing. Never fails. Water reported from sand.
170	43.5 39.7	Feb. 13, Apr. 2, 1936	C,W	D,I	Concrete block curb; 6 inch galvanized iron casing. Never fails. Water reported from sand.

Records of wells in Gillespie County--Continued

No.	Distance from Fredericksburg	Owner	Driller	Date completed	Altitude above sea level e/	Depth of well (ft.)	Diameter of well (in.)	Height of measuring point above ground (ft.) <sup>W</sup>
171	In Fredericksburg	Walter Kolmeier	-- Leyendecker	1915	1,701	101	6	0.3
172	do.	Mrs. Henry Schleuter	--	--	1,701	101	6	0.7
173	do.	R. S. Klett	--	1910	1,692	108	6	0.2
174	do.	Dina Priess Est.	--	--	1,695	91	6	0.5
175	do.	Mrs. Joe Segner	--	--	1,686	82	6	1
176	do.	E. C. Ottens	Chas. Leyendecker	--	1,686	84	6	1
177	do.	Cemetery	do.	--	1,660	59	6	1
e/178	do.	do.	--	--	1,659	113	6	0.5
179	do.	Alferd Klaerner	--	--	1,670	62	6	0.5
180	do.	Mrs. F. H. Hitzfeld	--	1900	1,672	36	72	0.5
181	do.	Jim Ruff	--	1870	1,677	95	48	3
182	do.	Henry Ruff	--	1880	1,673	28	48	3
e/183	do.	Hotel Nimitz	--	1870	--	35	72	--
184	do.	do.	--	1870	1,677	26	72	1
185	do.	Gillespie County Well No. 2	--	--	--	37	60	0.5
186	do.	Gillespie County Well No. 1	--	--	--	107	--	--
187	do.	Blum Estate	--	1905	1,715	86	6	0.2
188	do.	Henry C. Maier	Johnnie Moore	1909	--	82	6	0
189	do.	August Borchers	--	Old	1,720	170	6	1
190	do.	Fair Grounds	--	1900	1,700	122	6	1

c/ C, cylinder; B, bucket; W, windmill; H, hand; G, gasoline engine; E, electric motor; number indicates horsepower.

## Elgean Shield ; Project Superintendent.

No.	Water Level		Pump and power c/ d/	Use of water d/	Remarks
	Depth below measur- ing point (feet)	Date of measur- ment			
171	31	Feb. 13, 1936	C,W	D,I	Concrete block curb; 6 inch galvanized iron casing. Never fails. Water reported from sand.
172	29.2 33.4	do. Apr. 2, 1936	C,W	--	Rock curb; 6 inch galvanized iron casing. Never fails. Reported unfit for drinking.
173	29.6	Feb. 13, 1936	C,W	I	Concrete block curb; 6 inch galvanized iron casing. Never fails. Unpleasant mineral taste reported.
174	31.9	do.	C,W	D	Concrete curb; 6 inch galvanized iron casing. Never fails. Water reported from sand.
175	27.5 30.1	do. Apr. 2, 1936	C,W	D	Concrete block curb; 6 inch galvanized iron casing. Never fails.
176	26.5 29.1	Feb. 13, Apr. 2, 1936	C,E, $\frac{1}{2}$	D D	Concrete block curb; 6 inch galvanized iron casing. Never fails. Turbid water reported mineralized.
177	22.8 35.7 41.6	Feb. 12, Apr. 2, May 25, 1936	C,W	I	Never fails. 6 inch galvanized iron curb and casing. Water reported from sand.
178	17.5 27.6 19.7	Feb. 12, Apr. 2, May 25, 1936	C,W	I	Concrete block curb; 6 inch galvanized iron casing. Water reported from sand.
179	17.6	Feb. 13, 1936	C,W	D	Do.
180	21.5 23.2 21.4	do. Apr. 2, May 25 1936	C,W	D	Dug well. Wood curb; rock casing, top to bottom. Never fails. Water reported from sand.
181	26.8 24.5	Feb. 12, May 25, 1936	C,W	D,I	Dug well 45 feet. Concrete curb; rock casing. Drilled well from 45 to 95 feet. Never fails.
182	23.8 24.5 22	Feb. 11 Apr. 2, May 25, 1936	C,H	D,I	Dug well. Rock casing, top to bottom. Never fails. Water reported from sand.
183	29	f/	C,W & E,-	D	Dug well. Rock casing, top to bottom. 2 pumps. Reported strong supply.
184	24.5	Feb. 12, 1936	C,W,& $\frac{1}{2}$	D	Dug well. Wood curb; rock casing, top to bottom. 2 pumps. Never fails. Operates continuously.
185	30.6	Feb. 11, 1936	None	N	Dug well. Concrete block curb. Water reported from sand.
186	22.4	do.	--	--	--
187	34	Feb. 25, 1936	C,H	--	Concrete block curb. Strong supply. Water reported from sand.
188	49.8	do.	C,W	D	Reported good quality water from sand. Never fails.
189	50.9	do.	C,E, $\frac{3}{4}$	Ind	Concrete block curb; galvanized iron casing. Good quality water reported from sand. Never fails.
190	31.7	do.	C,W	D	Do.

d/ I, irrigation; Ind, industrial; P, public; D, domestic; S, stock; N, not used.

e/ No water sample collected for analysis.

f/ Water level reported.



## Records of wells in Gillespie County--Continued

No.	Distance from Fredericksburg	Owner	Driller	Date completed	Altitude above sea level - a/	Depth of well (ft.)	Diameter of well (in.)	Height of measuring point above ground (ft.) a/
191	In Fredericksburg	Eddie Stein	--	1900	1,713	146	6	1
192	do.	Ernest Peterman	--	Old	--	113	6	0.5
193	do.	Gus Siggel	--	1910	1,701	91	6	1
194	do.	Alfred Sauer	--	1916	1,702	103	6	0.5
195	do.	Edward Peterman	Oscar Miller	--	1,716	72	8	1
196	do.	Albert Klein	Alolph Usener	--	1,665	84	6	0.5
197	do.	Eugene Kramer	Chas. Leyendecker	1914	1,662	116	6	0.2
198	do.	Lindig Estate	--	1928	--	82	6	0.4
199	do.	Mrs. J. G. Kaiser	Chas. Leyendecker	1926	1,669	140	6	1
200	do.	Mrs. Joe Segner	do.	1926	1,663	109	6½	0.5
201	do.	Mrs. Marie Metzger Estate	--	1916	--	85	6	--
201a	do.	-- Gellerman	--	--	1,667	92	8	0.5
201b	do.	Harry Kordzik	Chas. Leyendecker	1921	1,667	95	6	0.7
201c	do.	Henry Franz	--	--	1,666	90	6	0.7
202	1½ miles east	Charley Kiehne	--	--	1,684	93	6	0.5
203	1 mile southeast	B. L. Enderly	--	Old	--	97	6	0.5
204	2 miles southeast	Martin Schultz	-- Schultz	--	--	26	4	3
205	2¼ miles southeast	H. W. Breautigam	--	--	--	119	6	3
206	do.	Harry Breautigam	--	--	--	87	6	0.5
207	1½ miles south	Rudolph Habenicht	--	--	--	126	4	0
208	1¼ miles south	Max Breautigam	--	Old	--	71	6	0.5
209	do.	Emil Breautigam	--	--	1,635	68	8	--
210	2 miles south	Earnest Kallenberg	--	1916	--	90	6	0
211	½ mile south	Otto Stoffers	Earnest Schmidt	--	--	63	6	0.5
e/212	3½ miles southwest	Alfred Kunz	--	--	1,703	--	6	1.5
e/213	do.	do.	--	--	1,703	56	6	1
214	4¼ miles southwest	D. M. Miller	--	Old	1,706	44	48	0.5

Elgean Shield , Project Superintendent.

No.	Water Level		Pump and power <u>c/</u>	Use of water <u>d/</u>	Remarks
	Depth below measuring point (feet)	Date of measurement			
191	45.9	Feb. 25, 1936	C,W	D	Concrete block curb; galvanized iron casing. Good quality water reported from sand. Never fails.
192	45.3	do.	C,W	D	Do.
193	39.2	do.	C,W	D,I	Do.
194	39	do.	C,W	D	Do.
195	31.8	do.	C,W	D,I	Do.
196	31	Feb. 6, 1936	C,W	D	Concrete block curb; galvanized iron casing. Reported good quality water. Nearly fails in summer.
197	18.6	Feb. 7, 1936	C,W	D	Concrete block curb; galvanized iron casing. Good quality water from sand reported.
198	19.2	Feb. 6, 1936	C,W	D	Concrete block curb; galvanized iron casing. Good quality water reported from sand. Never fails.
199	23.6	Feb. 4, 1936	C,E, -	D	Concrete block curb; galvanized iron casing. Good quality water reported from sand.
200	22.8	do.	C,W	D	Concrete block curb; galvanized iron casing. Good water reported from sand.
201	30	Feb. 5, 1936	C,-	D	Galvanized iron casing. Good quality water reported from sand.
201a	31.5	Feb. 6, 1936	C,W	D	Concrete block curb; galvanized iron casing. Good quality water reported from sand. Never fails.
201b	32.9	do.	C,W	D	Lo.
201c	28	do.	C,H	D	Casing end broken. Weak supply. Good quality water reported from sand.
202	32.7	Apr. 8, 1936	C,W	D,I	Concrete block curb. Good quality water reported from sand.
203	27.5	Apr. 1, 1936	C,W	D,I	Do.
204	4.5	do.	C,H	D	Never fails. Good quality water reported from sand.
205	26	do.	C,W	D,I	Dug well, to 31 feet. Drilled well 31 to 119 feet. Never dry. Good quality water reported from sand.
206	18	do.	C,W	S	Concrete block curb; galvanized iron casing. Good quality water reported <u>Located on bank of creek.</u>
207	29.4	Mar. 18, 1936	C,W	D,S,I	Good quality water reported <u>from sand. Never fails.</u> from sand. Never fails. Depth reported, 126 feet.
208	46.7	Mar. 28, 1936	C,W	D	Concrete block curb; galvanized iron casing. Good quality clear water reported from sand.
209	20.9	Feb. 27, 1936	C,W	D	Concrete block curb; galvanized iron casing. Water reported from sand. Never fails.
210	23.5	Mar. 28, 1936	C,W	D	Concrete block curb; galvanized iron casing. Good quality water reported from sand. Never fails.
211	12.1	do.	C,W	S	Concrete block curb; galvanized iron casing. Bad taste and sulphur odor reported.
212	45.5	Mar. 13, 1936	C,W	D,S	Dug well to 55.5 feet. Wood block curb; rock casing. Drilled well, 55.5 to 110 feet. Good quality water
213	4.5	do.	None	N	Concrete block curb <u>reported from sand. Never fails.</u> galvanized iron casing. Good quality water reported.
214	41	Feb. 13, 1936	C,W	D	Dug well. Concrete curb; galvanized iron casing. Good quality water reported from sand.

## Records of wells in Gillespie County--Continued

No.	Distance from Fredericksburg	Owner	Driller	Date completed	Altitude above sea level a/	Depth of well (ft.)	Diameter of well (in.)	Height of measuring point above ground (ft.) b/
215	5 miles southwest	Alfred Kunz	--	--	1,748	100	6	1
e/216	6 miles southwest	Bruno Foerster	--	--	--	58	6	--
217	6½ miles southwest	Otto Marschall	--	Old	1,715	49	72	1
e/217a	8 miles west	Hayden Estate	--	--	1,850	1,505	--	0
218	12½ miles west	Morris Land Co.	--	--	1,862	283	6	0.5
219	do.	do.	--	--	1,854	144	6	0.2
220	13 miles west	Alphons Feller	Chas. Leyendecker	Old	--	73	6	0.5
221	8 miles southwest	G. G. Sifford	--	Old	--	57	6	0.5
222	7 miles southwest	Adelbert Weber	Adolph Usener	1925	--	84	6	0.5
223	do.	Mrs. Caroline Weber	John McDaugall	1910	--	91	6	1
224	do.	Mrs. -- Weber	--	--	--	34	36	0
225	do.	Emil Freitag	-- Leyendecker	1930	--	58	10	0.5
226	7¼ miles southwest	Mrs. Emil Eckert	do.	1880	--	64	6	0.5
227	5½ miles southwest	Carl Hilker	--	--	--	130	6	1
228	3 miles southwest	Edmund Grenwelge	-- Leyendecker	1900	--	110	6	1
229	3 miles south	Mrs. Annie Washington	-- Foerster	1916	--	75	6	0
230	3¾ miles southeast	Emil Breutigam	-- Brazil	1896	--	39	48	3
231	do.	Emil Esensee	Emil Esensee	--	--	31	36	3
232	4½ miles southeast	Rufus Kneese	--	Old	--	47	36	0.5
233	4¾ miles southeast	Emil Hartman	--	Old	--	46	36	4
234	5 miles southeast	Henry Mogford	-- Foerster	1917	--	201	6	0.3
235	4¾ miles southeast	R. W. Kneese	--	1909	--	82	6	0.5
236	4½ miles southeast	City of Fredericksburg, Well No. 2	Layne-Texas Co.	--	1,589	45	--	--
237	do.	City of Fredericksburg, Well No. 1	do.	--	1,587	80	--	--
238	4 miles south	Otto Breutigam	Chas. Leyendecker	1902	1,596	122	6	0.5
e/238a	5 miles south	--	Layne-Texas Co.	--	1,600	58	--	--
239	5 miles south	--	--	Old	--	37	6	0.5
e/239a	5 miles south	--	Layne-Texas Co.	--	1,600	59	--	--

## Elgean Shield, Project Superintendent.

No.	Water Level		Pump and power c/	Use of water d/	Remarks
	Depth below measur- ing point (feet)	Date of measure- ment			
215	78.5	Mar. 13, 1936	C,W	D	Concrete block curb; 6 inch galvanized iron casing. Never fails. Water reported from sand.
216	41.8	do.	C,W	D	Stone block curb; 6 inch galvanized iron casing. Never fails. Good quality water reported from sand.
217	39.5	do.	C,W	D	Dug well. Wood curb; rock casing, top to bottom. Good quality water reported from sand.
217a	50	f/	--	--	Oil test. Drilled by Thousand Island Oil Company. See log.
218	131.7	Mar. 12, 1936	C,W	D	Never fails. 6 inch steel casing. Black mud in bot- tom; surface is soft blue stone.
219	108.3	Mar. 13, 1936	C,W	D	Sandstone curb; 6 inch galvanized iron casing. Good quality water reported from sand. Never fails.
220	48	Mar. 20, 1936	C,W	S	Concrete block curb; galvanized iron casing. Good quality water reported from sand. Never fails.
221	37.2	Mar. 27, 1936	C,W	D,S	Concrete block curb; galvanized iron casing. Never dry.
222	49	do.	C,W	D	Do.
223	46.8	do.	C,W	D	Do.
224	29.5	do.	None	D	Dug well. Stone curb; rock casing. Windmill pumps dry.
225	26.7	do.	C,W	D	Concrete block curb; steel casing; Never fails. Water reported from sand.
226	57.5	Mar. 31, 1936	C,W	D	Cut stone curb; galvanized iron casing. Never fails. Buff clay at surface. Water reported from sand.
227	36	Mar. 27, 1936	C,W	D	Concrete block curb; galvanized iron casing. Good quality water reported from sand. Never fails.
228	27.3	Mar. 13, 1936	C,W	D	Concrete block curb; galvanized iron casing. Never fails. Water reported from sand.
229	45	Mar. 28, 1936	C,W	D	Sandstone curb; galvanized iron casing. Good quality water reported from sand. Never fails.
230	35.2	Apr. 1, 1936	C,W	D,I	Dug well. Stone curb; rock casing. Water reported from sand. Flat rock at bottom. Never fails.
231	24.9	May 9, 1936	None	D	Dug well. Wood curb; no casing. Reported bails dry in two hours. Water reported from sand.
232	44.8	Apr. 1, 1936	C,W	D,S	Dug well. Concrete curb; rock casing. Operates continuously.
233	41.2	do.	C,W	D	Do.
234	76	do.	C,W	D	Concrete block curb. Water reported from sand. Well can be pumped dry.
235	41.5	Apr. 1, 1936	C,W	D	Stone block curb; 6 inch galvanized iron casing. Never fails. Water reported from sand.
236	--	f/	C,E, 20	P	Located in valley flat. Partially supplies city of Fredericksburg.
237	--	f/	C,E, 7½	P	Estimated capacity 2 pumps, 325 gallons a minute. Never fails. Partially supplies city of Fredericks-
238	52.5	Feb. 27, 1936	C,W	D	Located 300 feet from city well. Never fails. burg. Water reported from sand.
238a	34	f/	None	N	Test well. Water reported from gravel. See log.
239	35.1	Mar. 28, 1936	C,W	S	Located on bank of Pedernales River. Water report- ed from sand.
239a	18	f/	None	N	Test well. Water reported from gravel. See log.

Records of wells in Gillespie County--Continued

No.	Distance from Fredericksburg	Owner	Driller	Date completed	Altitude above sea level a/	Depth of well (ft.)	Diameter of well (in.)	Height of measuring point above ground (ft.) b/
240	10½ miles southwest	Hilma Henke	--	1916	--	101	6	0.5
241	11 miles southwest	do.	Leyendecker and Schultz	1935	--	151	6½	0.3
242	12 miles southwest	Chester Baum	--	--	--	Spring	--	--
243	12½ miles southwest	Emil Roeder	Adolph Usener	Old	--	110	6	0.5
244	14 miles southwest	August Kott	Fred Cox	1912	--	197	6	0.5
245	15 miles southwest	Mrs. Earnest Kott	-- Page	Old	--	243	6	0.5
246	12 miles southwest	Walter Kott	-- Leyendecker	1935	--	244	6	0.5
247	11 miles southwest	R. C. Baum	-- Ledbetter	Old	--	224	7	0.5
248	10½ miles southwest	Edmund Kott	--	1900	--	128	6	0.5
249	10 miles southwest	-- Weirich	--	Old	--	231	6	1
250	9½ miles southwest	William Eckert	-- Leyendecker	1900	--	78	6	2
251	8½ miles southwest	Richard Hubort	--	Old	--	220	6	1
252	10 miles southwest	Adolph Steiler	--	--	--	221	6	0
253	do.	do.	--	--	--	157	6	1
254	7½ miles south	Richard Schmidt	-- Leyendecker	--	--	240	6	0.5
255	5½ miles southeast	Josephine Hahn	Chas. D. Rode	1922	1,536	127	6	1
256	6½ miles southeast	Mrs. Richard Hahn	--	--	1,537	40	--	3
257	do.	H. C. Keese	--	--	1,624	45	36	1
258	7 miles southeast	Martin Keller	Ernest Page	1929	1,721	151	6	0.5

No.	Distance from Willow City	Owner	Driller	Date completed	Altitude above sea level a/	Depth of well (ft.)	Diameter of well (in.)	Height of measuring point above ground (ft.) c/
300	7 miles northwest	Mrs. Mary Knopf	Paul --	Old	--	133	6	--
301	do.	F. B. Riley	--	1960	--	44	--	5

a/ Altitudes obtained by barometric reading.

b/ Measuring point was usually top of casing, top of pump base, top of well curb or top of casing clamp.

c/ C, cylinder; B, bucket; W, windmill; H, hand; G, gasoline engine; E, electric motor; number indicates horsepower.

Elgean Shield Project Superintendent.

No.	Water Level		Pump and power <u>e/</u>	Use of water <u>d/</u>	Remarks
	Depth below measuring point (feet)	Date of measurement			
240	71	Mar. 27, 1936	C,W	D	Concrete block curb. Water reported in sand. Never fails.
241	90.6	do.	C,W	D,S	Stone curb; 6 $\frac{1}{2}$ inch galvanized iron casing. Never fails. Water reported in sand at 135 feet.
242	Flows	do.	None	N	Estimated flow; 3 gallons a minute from 1 opening in clay on hillside. Never fails.
243	86.6	do.	C,W	D	Stone block curb; 6 inch galvanized iron casing. Buff clay at surface. Water reported in sand.
244	162.7	do.	C,W	D	Concrete block curb; 6 inch galvanized iron casing at top. Never fails. Water reported in sand.
245	205	do.	C,W	D,S,I	Stone curb; 6 inch galvanized iron casing. Buff surface clay. Never fails. Water reported in sand.
246	163.5	Mar. 31, 1936	C,W	D,S	Reported log: gravel 0-25feet, blue clay 25-243 feet. Never fails. Water reported in sand.
247	142.8	do.	C,W	D,S	Wood block curb; 7 inch galvanized iron casing. Water level not accurately measured due to leaky
248	99.4	do.	C,W	D	Wood block curb; 6 inch galvanized iron casing. Reported pumps dry in high wind. Water reported in sand.
249	170.8	do.	C,W	S	Wood block curb; 6 inch galvanized iron casing. Water reported in sand.
250	57.3	do.	C,W	D	Stone curb; 6 inch galvanized iron casing. Located near Bear Creek. Water reported in blue mud.
251	133.9	do.	C,W	D,S	6 inch galvanized iron casing. Weak supply, reported in sand.
252	164.7	Mar. 28, 1936	C,W	D,S	Stone curb. Never fails. Water reported in sand.
253	102.4	do.	None	N	Concrete block curb; 6 inch galvanized iron casing. Reported only used during rainy seasons. Strong
254	76	do.	C,W	D,S	Concrete curb; 6 inch galvanized iron casing. Good quality water reported in sand.
255	36	Feb. 25, 1936	C,W	D	Concrete block curb; 6 inch galvanized iron casing. Reported red sand in bottom. Never fails.
256	37.1	do.	C,W, H	D	Dug well. Never fails.
257	39.5	do.	C,W	D	Dug well. Rock curb. Reported buff limey clay at surface. Never fails.
258	122	Feb. 27, 1936	C,W	D	Concrete block curb; 6 inch galvanized iron casing. Water reported in sand.

No.	Water Level		Pump and power <u>e/</u>	Use of water <u>d/</u>	Remarks
	Depth below measuring point (feet)	Date of measurement			
300	89.5	Apr. 11, 1936	B,H	D	6 inch galvanized iron casing. Weak supply. Water reported in granite.
301	31	do.	B,H	D	Dug well; concrete curb. Water reported in granite. Weak supply.

d/ I, irrigation; Ind, industrial; P, public; D, domestic; S, stock; N, not used.  
e/ No water sample collected for analysis.  
f/ Water level reported.

## Records of wells in Gillespie County--Continued.

No.	Distance from Willow City	Owner	Driller	Date completed	Altitude above sea level a/	Depth of well (ft.)	Diameter of well (in.)	Height of measuring point above ground (ft.) b/
302	7 miles northwest	Felix Kuhlman	--	1935	--	45	6	0
303	do.	do.	--	Old	--	29	60	--
304	do.	Frank Harvey	--	Old	--	73	6	0.5
305	do.	Arthur Peterson	--	Old	--	79	--	1
306	8 miles west	--	--	Old	--	160	6	1
307	4 miles southwest	Dabney Estate	--	Old	1,852	74	6	0.2
308	3 miles west	Albert Kolmeir	--	Old	1,791	76	6	0.5
309	2 miles west	William Kolmeir	--	1900	1,768	169	6	0.5
310	2½ miles west	Dave Mochle	Tom Benson	Old	1,745	89	6	0.5
311	3 miles northwest	I. W. Lee	do.	1896	--	52	6	0.3
312	do.	do.	Benskin and Alexander	1894	--	119	6	1
313	do.	Ben F. Thomas	Tom Benson	Old	--	81	--	0.5
314	4 miles northwest	T. H. Lawrence	Earnest Smith	Old	1,819	32	--	1
315	do.	J. W. Thomas	George Reiger	--	1,840	134	6	--
316	3¾ miles northwest	do.	--	1936	--	32	48	2.1
317	4½ miles northwest	-- Hohman	--	Old	1,800	64	--	0.5
318	In Willow City	H. J. Robinson	--	--	--	55	6	0
319	do.	do.	--	--	--	56	--	3
320	do.	J. H. Burrier	--	--	--	36	--	3
321	do.	C. E. Willowford	--	--	--	44	72	3
322	do.	Henry Horlen	--	1900	--	46	6	0
e/323	do.	N. H. Greathouse	--	1936	--	90	60	--
324	2½ miles northeast	Mrs. Henry Horlen	--	--	--	160	6	1
325	5½ miles east	-- Suedeymer	--	Old	1,673	123	6	1
326	4½ miles east	Albert Immel	Immel and Page	1935	1,702	176	6	1
e/327	3¾ miles east	--	--	--	1,644	153	6	--
328	4 miles east	Rudolph Pressler	Adolph Pressler	1890	1,654	92	6	1

## Elgean Shield , Project Superintendent

No.	Water Level		Pump and power c/ d/	Use of water d/ f/	Remarks
	Depth below measur- ing point (feet)	Date of measure- ment			
302	27.6	Apr. 11, 1936	None	N	6 inch steel casing. Water reported from granite.
303	22.9	do.	C,W	D	Dug well with rock casing. Weak supply. Water reported from granite.
304	27.7	do.	C,W	D,S	Concrete block curb. Water reported from sand. Never fails.
305	35.5	do.	C,W	D,S	Stone curb; no casing. Yellow clay at surface. Water reported from sand.
306	94.5	do.	C,W	S	Stone block curb; 6 inch galvanized iron casing. Good quality water reported from sand.
307	52.5	Apr. 10, 1936	C,W	S	6 inch galvanized casing. Water reported from sand.
308	12.6	do.	C,W	D	Wood block curb; 6 inch galvanized iron casing. Water reported from sand. Never fails.
309	31.3	do.	C,W	D,I	Stone block curb. Reported soft red sand in bottom. Never fails.
310	34.1	do.	C,W	D	Stone block curb. Never fails. Good quality water reported from sand.
311	9.2	do.	C,H	D	Concrete block curb; 6 inch galvanized iron casing. Never fails. Water reported from sand.
312	25.8	do.	C,W	D	Concrete block curb; 6 inch galvanized iron casing. Reported main water at 110 feet in granite.
313	9.2	do.	C,W	D	Wood block curb. Never fails. Water reported from sand.
314	11.7	do.	C,W	D,S	Dug well with wood curb. Never dry. Water reported from sand.
315	80	do.	C,W	D	Concrete block curb; 6 inch galvanized iron casing. Weak supply. Reported pumped dry in 5 minutes.
316	5.2	do.	C,W	S	Dug well. Concrete block curb. Located in stream bed. Water reported from granite.
317	53.5	do.	C,W H	D	Round stone curb. Water reported from granite.
318	44.9	Feb. 21, 1936	C,W	D	Reported red sand, surface to 50 feet. Never fails.
319	50	Feb. 20, 1936	B,E	D	Dug well. Rock curb. Reported granite at bottom. Reported pumps dry.
320	34	do.	C,H	D	Dug well. Rock curb. Reported pumps dry at 8 gallons a minute. Reported granite at bottom.
321	36	do.	C,H	D	Dug well. Rock curb and casing. Reported granite at bottom.
322	36.5	do.	C,W	D,Ind	Concrete block curb; 6 inch galvanized iron casing. Reported never dry in 34 years. Hard water reported.
323	--	--	C,W	S	Dug well. Rock casing. Never fails. Bad taste reported.
324	83	Apr. 23, 1936	C,W	D,S	Concrete block curb; 6 inch galvanized iron casing. Reported good quality water. Never fails.
325	104.2	Apr. 9, 1936	C,W	S	Stone curb. Weak supply.
326	42.2	do.	C,W	D	Clay at surface. Reported granite at 160 feet. Reported pumps dry.
327	48	f/	C,W	S	Concrete block curb; 6 inch galvanized iron casing.
328	88	Apr. 9, 1936	C,W	D	Stone block curb; 6 inch galvanized iron casing. Reported pumps dry in 24 hours.



## Records of wells in Gillespie County--Continued

No.	Distance from Willow City	Owner	Driller	Date completed	Altitude above sea level ft./ m.	Depth of well (ft.)	Diameter of well (in.)	Height of measuring point above ground (ft.) m.
329	3 miles southeast	Louis Eckhardt	--	1900	1,631	191	6	1
330	2 miles south	Edgar Ottmers	--	1880	1,682	249	6	1
331	3 $\frac{1}{4}$ miles south	R. W. Danz	Charles Kunz	1930	1,709	464	8	1
332	4 miles south	Llano Bank	-- Loyendecker	Old	1,663	224	6	0.5
333	3 miles south	Charles Mohr	--	Old	1,777	270	6	1
334	3 $\frac{3}{4}$ miles south	Marvin Mohr	--	Old	1,775	181	6	0.5
e/335	4 miles south	Theodore Koenecke	--	1900	1,739	236	--	1
336	5 miles south	Alfred Ottmers	--	Old	1,739	75	6	0.5
337	4 $\frac{1}{2}$ miles south	--	--	Old	1,757	83	5	0
338	6 $\frac{1}{2}$ miles southwest	Max Kunz	Willie Schultz	1920	1,961	121	--	0.5
339	7 $\frac{1}{2}$ miles southwest	State Highway Dept.	--	--	1,892	Spring	--	--
340	8 $\frac{1}{2}$ miles southwest	Otto Grobe	Otto Grobe	1908	1,712	50	36	4
341	9 miles southwest	Albert Segner	-- Segner	1870	--	50	60	4
342	10 miles southwest	Ed. Fries	--	--	1,665	78	6	--
343	10 $\frac{1}{2}$ miles southwest	Chas. Beyer	--	Old	1,626	149	6	0
344	10 miles southwest	Edwin Oehler	--	1900	--	43	6	--
e/345	9 miles southwest	W. R. Hansen	--	Old	1,620	100	6	0.5
346	9 $\frac{1}{2}$ miles southwest	Rhinehold Oehler	-- Oehler	1900	1,612	57	36	--
347	8 $\frac{1}{2}$ miles southwest	Chas. H. Wagner	--	Old	--	54	36	--
348	do.	do.	--	1920	--	199	6	1
349	8 miles south	do.	--	Old	--	17	60	1
350	do.	William Ebert	--	Old	1,712	32	36	--
351	7 miles south	Mrs. Jimmie Wienecke	--	Old	1,712	207	6	1
352	6 $\frac{1}{2}$ miles south	Lutheran Church	--	Old	--	322	6	1
353	8 miles south	Felix Ottmer	--	1900	--	167	6	1
354	8 $\frac{1}{2}$ miles south	William Schleuter	--	--	--	77	6	3
355	do.	do.	Fritz Volmer	1900	--	72	6	1
e/356	do.	Edwin Schleuter	F. Leyendecker	Old	--	148	6	0.5

## Elrean Shields, Project Superintendent

No.	Water Level		Pump and power c/	Use of water d/	Remarks
	Depth below measuring point (feet)	Date of measurement			
329	34.8	Apr. 9, 1936	C,W	D,I	Wood block curb; 6 inch galvanized iron casing. Never fails.
330	107.6	do.	C,W	D,I	Stone block curb; 6 inch galvanized casing. Strong supply.
331	190.6	do.	C,W	D,I	Concrete curb; 8 inch galvanized iron casing. Reported pumps dry in one day.
332	143.5	do.	C,W	D,I	Steel block curb; 6 inch galvanized iron casing. Clay at surface. Never fails. Water reported from
333	130	do.	C,W	D	Wood block curb. Clay at surface. Will not supply mill. sand.
334	164	do.	C,W	D	Stone block curb. Will not supply mill. Water reported from sand.
335	54	do.	C,W	D	Stone block curb. Water reported from sand. Never fails.
336	30.5	do.	C,W	D	Wood block curb; 6 inch galvanized iron casing. Never fails.
337	50.5	do.	C,W	S	Stone block curb. Buff clay at surface. Water reported from sand.
338	71.5	Apr. 10, 1936	C,W	D,S	Concrete block curb. Reported re-drilled in 1935 to increase supply. Reported pumps dry in 30 minutes.
339	Flows	Feb. 20, 1936	None	S	Measured flow; 4 gallons a minute from 1 opening in base of gray limestone on hillside. Temperature 60°F.
340	37.9	Apr. 10, 1936	C,W	D,I	Dug well. Concrete curb; 6 inch galvanized iron casing. Never fails. Sand at surface.
341	40.1	do.	C,W	D,I	Dug well. Concrete curb; rock casing. Clay at surface. Reported pumps dry in 5 or 6 hours.
342	44.9	f/	C,W	S	Stone block curb; galvanized iron casing. Strong supply.
343	24	Apr. 8, 1936	C,W	D,I	Stone block curb; 6 inch galvanized iron casing. Water reported from sand. Never fails.
344	--	--	C,W	D	Concrete block curb; 6 inch galvanized iron casing. Fails in dry years. Red sand at surface.
345	60	f/	C,W	D	Stone block curb; 6 inch galvanized iron casing. Never dry.
346	35.7	f/	C,W	D	Dug well. Concrete block curb; rock casing. Never fails.
347	26.7	f/	C,W	I	Dug well. Bad quality water reported. Supply supplemented by rain water from roof of house.
348	153.1	Apr, 17, 1936	C,W	I	Stone block curb; galvanized iron casing. Good quality water reported. Never fails.
349	13.2	do.	B,H	D	Dug well. Wood curb; rock casing. Weak supply.
350	26.2	f/	C,W	D,I	Dug well. Rock curb and casing. Fails in drought.
351	174.9	Apr. 9, 1936	C,W	D,S	Wood block curb; 6 inch galvanized iron casing. Weak supply.
352	258.9	do.	C,W	D	Stone block curb; 6 inch galvanized iron casing. Located on mountain side.
353	80.3	Apr. 11, 1936	C,W	D,S	Stone block curb; 6 inch galvanized iron casing. Clay at surface. Never fails. Water reported from
354	64	Apr. 17, 1936	C,W	S	Stone block curb; 6 inch galvanized iron casing. Never fails. Water reported from sand. sand.
355	70	do.	C,W	D	Rock curb; 6 inch galvanized iron casing. Reported pumps dry in 2 hours
356	118.3	do.	C,W	D	Stone block curb; 6 inch galvanized iron casing. Clay at surface. Never fails.

Records of wells in Gillespie County--Continued.

No.	Distance from Willow City	Owner	Driller	Date completed	Altitude above sea level E/	Depth of well (ft.)	Diameter of well (in.)	Height of measuring point above ground (ft.) <sup>b</sup>
357	8 miles south	Alfred Woegel	---	Old	--	77	6	0.5
358	do.	Harry Hopf	Chas. Leyendecker	1925	--	256	6	0.5
359	do.	Harry Duesher	Tom Benson	Old	--	262	6	1
360	9½ miles southeast	Vance Tyson	--	--	--	60	36	--
361	10 miles south	Willie Pehl	--	1900	--	130	6	1
362	11 miles south	Adam F. Pehl	Walter Foerster	1931	--	119	6	0.5
363	11½ miles south	Paul Pehl	--	--	--	66	60	--
364	12 miles southwest	Ludwig Vorauer	--	Old	1,642	48	6	1
365	15½ miles southwest	Henry Mogford	--	Old	--	82	6	0.5
366	do.	Edmund Kraus	--	1900	--	84	6	0.5
367	16½ miles southwest	--	--	--	--	184	6	0.5
368	16 miles southwest	Bennie Baag	--	--	--	133	6	0.5
369	do.	--	--	Old	--	52	60	0.5
370	15½ miles southwest	Arthur Esensee	--	Old	--	103	6	0
371	15 miles southwest	Rocky Hill School	--	Old	--	69	36	0.5
372	do.	Frank Baag	--	1916	--	158	6	0.5
373	14½ miles southwest	Albert Moellering	--	Old	--	62	48	3
374	do.	Christian Machisen	--	1918	--	98	6	2
375	do.	Hilmer Weinheimer	--	Old	--	86	6	1
376	do.	Joseph Jenschke	--	Old	--	89	6	1
377	do.	Joseph Schmidtzensky	Fritz Irsch	Old	--	135	6	1
378	13½ miles southwest	Hohenberger Bros.	Tom Benson	Old	--	325	6	1
379	13½ miles south	Lower Grape Creek School	--	--	--	47	48	5
380	13 miles south	Oswald Behrends	Tom Benson	--	--	99	6	1
381	do.	do.	--	Old	--	93	6	--

a/ Altitudes obtained by barometric reading.

b/ Measuring point was usually top of casing, top of pump base, top of well curb or top of casing clamp.

c/ C, cylinder; B, bucket; W, windmill; H, hand; G, galoline engine; E, electric motor; number indicates horsepower.

Elgean Shield , Project Superintendent.

No.	Water Level		Pump and power <u>c/</u>	Use of water <u>d/</u>	Remarks
	Depth below measuring point (feet)	Date of measurement			
357	40.7	Apr. 17, 1936	C,W	D	Stone block curb; 6 inch galvanized iron casing. Fails in drought.
358	102.6	Apr. 1, 1936	C,W	D	Stone block curb; 6 inch galvanized iron casing. Never fails. Reported lower 125 feet in rock.
359	150	Apr. 17, 1936	C,W	D,S	Concrete block curb; 6 inch galvanized iron casing. Limestone at surface. Fails in drought.
360	16.8	do.	C,W	D	Dug well to 28.4 feet; drilled to 60 feet. Wood curb. Clay at surface. Water reported from sand.
361	28.1	do.	C,W	D	Dug well to 58 feet; drilled to 130 feet. 6 inch steel casing. Water reported from limestone. Fails
362	60	do.	C,W	D,I	Wood block curb; 6 inch galvanized iron casing. Sand at surface. Never fails.
363	43	<u>f/</u>	C,W	D	Dug well. Rock casing. Good quality water reported. Never fails.
364	19.7	Apr. 8, 1936	C,W	D,I	Sandstone curb; galvanized iron casing. Never fails. Estimated capacity 10,000 gallons a day.
365	34.6	Apr. 1, 1936	C,W	S	Concrete block curb; 6 inch galvanized iron casing. Reported good quality water from sand.
366	60	do.	C,W	D	Stone block curb; 6 inch galvanized iron casing. Never fails. Good quality water reported from sand.
367	128.2	do.	C,W	S	Do.
368	89.3	do.	C,W	S	Stone block curb; 6 inch galvanized iron casing. Clay at surface. Never fails. Water reported from
369	41	do.	C,W	D	Dug well. Wood curb; 8 inch galvanized iron casing. Never fails. Water reported from sand.
370	35	do.	C,W	D	Wood block curb; 6 inch galvanized iron casing. Red sand reported at bottom. Never fails.
371	34.5	Apr. 7, 1936	C,H	--	Dug well. Concrete curb; rock casing. Reported good quality water from sand.
372	36.2	do.	C,W	D,I	Stone block curb; 6 inch galvanized iron casing. Reported good quality water from sand.
373	55.5	do.	C,W	D,I	Dug well. Concrete curb; Rock casing. Reported flint rock in bottom. Fails in drought.
374	50	<u>f/</u>	--	--	Concrete block curb; 50 feet, 6 inch galvanized iron casing at top. Estimated capacity, 1,000 gallons an
375	52.1	Apr. 7, 1936	C,W	S	Stone block curb; 6 inch galvanized iron casing. Located near river. Good quality water reported.
376	56	do.	C,W	D	Concrete block curb; 6 inch galvanized iron casing.
377	115.3	do.	C,W	D,S	Stone block curb; 6 inch galvanized iron casing. Reported water from limestone. Never fails.
378	24.9	do.	C,G, 5	D	Located on creek bank. Concrete block curb; 10 feet, 6 inch galvanized iron casing at top. Water reported
379	35	do.	B,H	D	Dug well. Concrete curb; No casing. Located on bank of Grape Creek. Supplies school.
380	27.6	do.	C,W	S	Concrete block curb; 6 inch galvanized iron casing. Reported strong supply of good quality water.
381	29.1	do.	C,W	D	Do.

d/ I, irrigation; Ind, industrial; P, public; D, domestic; S, stock; N, not used.

e/ No water sample collected for analysis.

f/ Water level reported.

## Records of wells in Gillespie County--Continued.

No.	Distance from Willow City	Owner	Driller	Date completed	Altitude above sea level a/	Depth of well (ft.)	Diameter of well (in.)	Height of measuring point above ground (ft.) b/
382	13 miles south	Max Schuman	--	Old	--	38	36	4
383	do.	William Herber	--	Old	--	74	8	0.5
384	do.	Mrs. H. J. Burg	--	--	--	53	60	3.5
385	do.	do.	--	Old	--	77	6	0.5
386	14 miles southeast	Richard Danz	--	Old	--	48	36	3
387	do.	Lutheran Church	--	--	--	36	6	0.5
388	13½ miles southeast	Emil Neffendorf	--	--	--	55	6	1
e/388a	14 miles southeast	Andrew Lindig	Nixon-Dare Power Company	1933	1,441	1,198	8½	--
389	do.	D. C. Hodges	--	1905	--	35	6	1.5
e/390	do.	Hiram Hodges	T. E. Owen	1935	--	35	6	1
391	15 miles southeast	Andrew Lindig	Albert Oil Co.	--	1,472	900	8	2
392	do.	do.	do.	--	1,468	1,200	--	--
393	17 miles southeast	Alfred Novian	--	--	--	63	6	1
e/394	17½ miles southeast	Arthur Klein	--	--	--	286	6	1
395	20 miles south	Albert Wilke	-- Page	1913	--	230	4	0.5
e/396	do.	Chas. Moldenhauer	--	--	--	320	6	--
397	17 miles southwest	Engel Estate	--	Old	--	41	36	3
398	do.	do.	--	--	--	30	36	3
399	do.	Miss Meth Kreiger	--	Old	--	82	48	1.5
400	do.	Christian Behrens	Chas. Behrens	Old	--	71	6	0.3
401	do.	Oswald Behrends	--	Old	--	143	36	2.5
402	17½ miles southwest	do.	--	--	--	121	6	0.5
403	17 miles southwest	Meyer Ranch	--	--	--	132	6	0.3
404	17½ miles southwest	Walter Behrends	--	1890	--	142	6	0.3
405	17 miles southwest	J. W. Adams	--	Old	--	240	6	--
e/406	do.	Edgar Tatsch	--	1927	--	224	7	1
407	17½ miles southwest	A. A. Feidler	-- Leyendecker	1920	--	286	6	0
408	do.	August Young	--	--	--	3,024	6	0.5

Elgean Shield, Project Superintendent.

No.	Water Level		Pump and power <u>d/</u>	Use of water <u>d/</u>	Remarks
	Depth below measurement point (feet)	Date of measurement			
382	26.8	Apr. 7, 1936	B,H	S	Dug well. Wood curb; rock casing. Reported water from limestone. Salty taste reported.
383	37.5	do.	C,W	N	Wood block curb; 8 inch galvanized iron casing. Reported unfit to drink. Never fails.
384	41.8	do.	None	N	Dug well. Located in valley flat near river. Concrete curb; no casing.
385	41.6	do.	C,W	D,I	Concrete block curb; 6 inch galvanized iron casing. Strong supply.
386	37	do.	C,W	D	Dug well. Stone wall curb; rock casing. Reported strong supply.
387	22.4	do.	C,H, W	D	Concrete block curb; located on river bank. Good quality water reported. Strong supply.
388	13.8	do.	C,W	D,I	Stone block curb; 40 feet, 6 inch galvanized iron casing at top. Located on river bank. Never fails.
388a	--	--	--	N	Oil test. See Log.
389	25	Apr. 7, 1936	C,H	D	Located near Pedernales River. Reported good quality water. Never fails.
390	30.3	do.	C,H	D,I	30 feet, 6 inch galvanized iron casing at top. Good quality water reported from limestone. Never dry.
391	48.2	Mar. 18, 1936	None	N	705 feet steel casing at top. Oil test. Reported limestone from 800 feet to 850 feet.
392	--	--	None	N	No casing. Oil test. Water at 138 feet, 161 feet, 500 feet and 550 feet.
393	38	Mar. 18, 1936	C,W	D,S	6 inch galvanized iron casing. Mineralized taste reported. Never fails.
394	199.5	do.	C,W	D,S	Concrete block curb; 6 inch galvanized iron casing. Red sand reported in bottom. Never fails.
395	177.9	do.	C,W	D,S	Stone block curb. Never fails. Reported water in red sand.
396	--	--	C,W	D,S	Well caved in. Depth reported. Reported never failed. Water from sand.
397	30.5	Apr. 1, 1936	C,W	D	Dug well. Wood curb; rock casing. Never fails. Located on creek bank.
398	23.3	do.	B,H	D	Dug well. Concrete curb; rock casing. Located near creek bed. Never fails.
399	39.2	do.	C,W	D	Dug well to 42 feet. Drilled well from 48 to 82 feet. Wood block curb and surface. Fails in drought.
400	42.9	do.	C,W	D,S	Stone block curb; 6 inch galvanized iron casing. Clay at surface. Water reported from sand. Never fails.
401	90	do.	C,W	D	Dug well to 92.5 feet. Wood curb; 8 inch galvanized iron casing to bottom. Never fails. Sup-
402	89	do.	C,W	D	Stone block curb; plies mill. Water reported from 6 inch galvanized iron casing. Clay at surface. sand.
403	100.2	do.	C,W	S	6 inch gal- Water reported from sand. Never fails. vanized iron casing. Clay at surface. Water reported
404	118.2	do.	C,W	D,S,I	Stone block curb; 6 inch galvanized iron from sand. casing. Never fails. Clay at surface. Water reported
405	--	--	C,G, 2	D	6 inch galvanized iron casing. Unable to from sand. measure depth. Clay at surface. Water reported from
406	160.6	Feb. 20, 1936	C,W	D	Concrete block curb; 7 inch galvanized iron sand. casing. Water reported from sand. Never fails.
407	161.5	do.	C,W	D,I	Concrete block curb; 6 inch galvanized iron casing. Reported capacity, 30 gallons a minute.
408	259	do.	C,G, 3½	D,I	Concrete block curb; 6 inch galvanized iron casing. Hard water reported from sand. Never fails.

## Records of wells in Gillespie County--Continued.

No.	Distance from Willow City	Owner	Driller	Date completed	Altitude above sea level e/	Depth of well (ft.)	Diameter of well (in.)	Height of measuring point above ground (ft.) a/
409	19½ miles southwest	Henry Klinkseik	Otto Tatsch	1908	1,706	209	6	0.5
e/410	21 miles southwest	Beno Hohenburger	William Neugebauer	1913	1,765	360	8	0.3

a/ Altitudes obtained by barometric reading.

b/ Measuring point was usually top of casing, top of pump base, top of well curb or top of casing clamp.

c/ C, cylinder; B, bucket; W, windmill; H, hand; G, gasoline engine; E, electric motor; number indicates horsepower.

Elgean Shield , Project Superintendent.

No.	Water Level		Pump and power c/	Use of water d/	Remarks
	Depth below measuring point (feet)	Date of measurement			
409	115	Feb. 27, 1936	C,W	D,I	Concrete block curb; 6 inch galvanized iron casing, Clay at surface.
410	284	do.	C,W	D,I	Concrete block curb; 6 inch galvanized iron casing top to bottom. Good quality water reported from sand.

d/ I, irrigation; Ind, industrial; P, public; D, domestic; S, stock; N, not used.

e/ No water sample collected for analysis.

f/ Water level reported.



Table of Drillers' Logs, Gillespie County, Texas.

Driller's log of well 132a  
Layne-Texas Co., City of Fredericksburg.  
2 1/2 miles west of Fredericksburg.

	Thickness (feet)	Depth (feet)
Top soil - - - - -	2	2
Clay and gravel - - - - -	6	8
Sandy clay - - - - -	9	17
Coarse sand - - - - -	7	24
Clay and gravel - - - - -	4	28
Rock - - - - -	1	29
Sandy clay - - - - -	7	36
White sand - - - - -	1	37
Red clay - - - - -	11	48
TOTAL DEPTH - - - - -		48

Driller's log of well 217a  
Thousand Island Oil Co., Hayden Estate #1.  
8 miles west of Fredericksburg.

Clean quartz sand - - - - -	31	31
White and pink limestone, water - - - - -	123	154
Pink sand - - - - -	5	159
Fine, light brown sand - - -	1	160
Medium, light brown sand - -	3	163
Coarse sand - - - - -	3	166
Pink sand - - - - -	9	175
Dark gray, glauconitic lime- stone - - - - -	5	180
Fine, brown, quartz sand - -	4	184
Light gray, glauconitic limestone - - - - -	8	192
Brown and light gray, glau- conitic limestone - - - - -	6	198
Light pink and gray, glau- conitic limestone - - - - -	6	204
Light gray, glauconitic lime- stone - - - - -	25	229
White and light gray, glau- conitic limestone - - - - -	20	249
Medium grains of quartz and limestone - - - - -	4	253
Pink and light gray, glau- conitic limestone - - - - -	24	277
Light pink and colorless quartz sand - - - - -	23	300
Dark gray, glauconitic sand- stone - - - - -	5	305
White and light gray, glau- conitic limestone - - - - -	5	310
Light gray, glauconitic lime- stone - - - - -	25	435
Light gray, crystalline and glauconitic limestone - -	85	520
Fine quartz sand and crys- talline calcite - - - - -	25	545
Fine quartz sand cemented with calcareous material -	35	580

Driller's log of well 217a--Continued  
Thickness Depth  
(feet) (feet)

White limestone and quartz -	35	615
Fine quartz sand cemented with calcareous material -	165	780
Medium quartz and glauconi- tic sand - - - - -	120	900
Dark brown, slightly calcar- eous sand - - - - -	25	925
Light brown, calcareous sand	5	930
Non-calcareous quartz sand -	80	1010
Light pink quartz sand - - -	120	1130
Non-calcareous quartz sand -	35	1165
Pink, calcareous sand - - -	15	1180
Sand - - - - -	2	1182
TOTAL DEPTH - - - - -		1505

Driller's log of well 238a  
Layne-Texas Co., City of Fredericksburg.  
5 miles south of Fredericksburg.

Top soil - - - - -	4	4
White sand - - - - -	20	24
Gravel - - - - -	14	38
Red clay - - - - -	20	58
TOTAL DEPTH - - - - -		58

Driller's log of well 588a  
Nixon-Dore Power Co., Andrew Lindig farm.  
14 miles southeast of Willow City.

Soil - - - - -	4	4
Lime - - - - -	8	12
Yellow clay - - - - -	6	18
Lime - - - - -	6	24
Blue shale - - - - -	26	50
Gray shale - - - - -	50	100
Sandy lime - - - - -	10	110
Red bed - - - - -	25	135
Sand, water - - - - -	3	138
Sandy lime - - - - -	5	143
Hard lime - - - - -	42	185
Sandy lime, water - - - - -	10	195
White lime - - - - -	50	235
Brown lime - - - - -	5	240
Gray lime - - - - -	5	245
Sand, water - - - - -	2	247
Brown lime - - - - -	13	260
Gray lime - - - - -	75	345
Lime, gray, white, blue specks - - - - -	60	405
Hard, gray lime - - - - -	50	455
Hard, brown lime - - - - -	15	470
Brown and gray lime - - - -	17	487
Water at around 500 feet.		
White lime - - - - -	198	685
Light gray lime - - - - -	25	710
Hard, light gray lime - - -	40	760

(Continued on next page)

Table of Drillers' Logs, Gillespie County--Continued.

Driller's log of well 338a--Continued			Driller's log of well 338a--Continued		
	Thickness (feet)	Depth (feet)		Thickness (feet)	Depth (feet)
Light gray lime	16	776	White lime	8	923
Blue shale	2	778	Gumbo	2	925
Light colored lime	10	788	Lime and gumbo	6	931
Blue shale	1	789	White lime	2	933
Lime	9	798	Sandy, white lime	2	935
Blue shale	2	800	White lime	2	937
Lime	14	814	Pink mud	2	939
Blue gumbo	2	816	Hard, white lime	4	943
Light colored lime	12	828	Red mud	1	944
Blue shale	3	831	White lime	2	946
White lime	4	835	Red mud	1	947
Blue shale	5	840	Lime, white, brown and blue specks	2	949
Lime	2	842	Red mud	1	950
Blue, sticky shale	10	852	Lime	2	952
Lime	4	856	Red mud	2	954
Blue shale	6	862	Sandy lime	1	955
Sticky, blue shale	4	866	Red mud	5	960
White lime with brown specks	6	872	White lime	5	965
Yellow gumbo	2	874	Pink mud	3	968
Brown lime	2	876	White lime	12	980
Blue shale	2	878	Blue shale	4	984
Lime	2	880	Light colored lime	15	999
Pink mud	3	883	Iron gravel and light gray lime	150	1129
White lime	2	885	Dark gray lime and very hard (gray granite)	2	1131
Gray shale	5	890	Dark gray lime	4	1135
White lime	3	893	Hard, gray, dark lime, evi- dently granite	15	1150
Gray shale	3	896	Hard lime	40	1198
White lime	2	898	Lost tools.		
Gray shale	4	902			
White lime	2	904			
Pink mud	3	907			
White lime	7	914			
Gumbo	1	915			

Driller's log of well 239a

Layne-Texas Co., City of Fredericksburg.  
5 miles south of Fredericksburg.

Top soil	5	5	Packed sand	12	55
Gravel	20	25	Red clay	4	59
Red clay	18	43	TOTAL DEPTH		59

Partial analyses of water from wells in Gillespie County, Texas

(Analyzed at The State University under the direction of Dr. E. P. Schoch, Director of the Bureau of Industrial Chemistry, by J. E. Stullken, C. R. Stewart, D. F. Riddell, and Alfred J. Kelly, Chemists, and J. A. Harmaza, Martin Wieland and Jack Ramsey, Assistant Chemists. Results are in parts per million. Well numbers correspond to numbers in table of well records.)

Well No.	Owner	Depth of well (feet)	Date of collection	Total dissolved solids (calculated)	Calcium (Ca)	Magnesium (Mg)	Sodium and Potassium (Na + K) (calculated)	Bicarbonate (HCO <sub>3</sub> )	Sulphate (SO <sub>4</sub> )	Chloride (Cl)	Total hardness as CaCO <sub>3</sub> (calculated)
1	J.M. Diuden	110	Mar. 5, 1936	309	7	58	33	262	a/	80	257
2	Walter Itz	152	-	403	-	-	-	232	12	124	-
3	Archie Geistweidt	120	Mar. 4, 1936	365	-	-	-	244	a/	104	-
4	A.F. Faucht	123	do.	501	26	32	125	146	a/	245	194
5	Adolph Evers	185	Mar. 5, 1936	305	50	46	1	220	a/	98	316
6	E.L. Gross	880	Mar. 4, 1936	465	-	48	110	244	53	132	201
7	Jake Geistweidt	70	do.	226	-	-	-	183	a/	48	-
8	John Geistweidt	241	do.	924	88	71	155	98	76	485	509
9	Adolph Sattler	Spring	do.	206	31	14	32	207	a/	26	136
10	Arnold Rode	60	do.	273	-	-	-	220	a/	58	-
11	Mrs. Julius Lange	Spring	do.	303	-	-	-	270	a/	50	-
14	Chas. Lekkman	41	Feb. 29, 1936	456	-	-	-	305	10	122	-
15	Eddie Hahn	121	do.	723	-	-	-	262	48	280	-
18	W.M. Rosenbusch	106	do.	350	-	-	-	293	8	62	-
19	do.	95	do.	339	18	53	41	299	10	68	262
20	Henry Baethge	740	do.	387	25	7	230	189	a/	31	91
21	do.	200	do.	567	-	-	-	214	21	230	-
22	Will Baethge	184	do.	500	35	75	59	195	50	184	344
23	Alfred Duerst	79	Mar. 10, 1936	431	-	-	-	305	8	108	-
24	John Berener	870	Mar. 11, 1936	393	94	6	53	360	8	52	261
25	Louis Seiter	198	Mar. 10, 1936	188	2	34	18	207	a/	31	174
26	do.	202	do.	221	15	22	41	171	14	44	128
27	Hahn Brothers	114	do.	174	8	24	28	171	a/	29	121
28	Carl Kroll	200	do.	256	2	36	50	232	a/	52	155
29	Oscar Weinheimer	271	Mar. 12, 1936	212	-	30	44	220	a/	28	124
30	Gus Weinheimer	128	do.	154	5	46	6	183	a/	46	201
31	L.M. Wilson	82	Feb. 19, 1936	183	-	-	-	134	a/	46	-
32	Sam McCaleb	81	do.	183	-	-	-	134	a/	46	-
33	B. Markwordt	69	do.	145	-	-	-	98	a/	41	-
34	Arther S. Baumann	62	do.	190	13	27	23	122	a/	66	143

a/ Sulphate less than 10 parts per million.

Partial analyses of water from wells in Gillespie County--Continued  
Results are in parts per million.

Well No.	Owner	Depth of well (feet)	Date of collection	Total dissolved solids (calculated)	Calcium (Ca)	Magnesium (Mg)	Sodium and Potassium (Na / K) (calculated)	Bicarbonate (HCO <sub>3</sub> )	Sulphate (SO <sub>4</sub> )	Chloride (Cl)	Total hardness as CaCO <sub>3</sub> (calculated)
36	Willie A. Kaiser	54	Feb.19,1936	213	23	22	29	134	a/	72	148
37	Mrs. E. Hickson	64	do.	428	99	26	31	342	33	68	352
39	Walter Bierschwale	81	Mar.17,1936	271	29	19	48	122	12	102	152
40	Oscar Fiedler	120	do.	214	-	27	48	159	a/	60	110
41	John Heinemann	246	do.	281	61	22	15	159	a/	104	243
42	Bette Markwordt	211	do.	208	-	-	-	171	a/	43	-
43	A. H. Kaiser	251	do.	234	-	-	-	195	a/	47	-
44	Henry Moellendorf	200	do.	290	-	-	-	256	a/	50	-
45	Fred Gammenthaler	114	do.	231	-	-	-	183	a/	51	-
46	Mrs. Tom McDougal	122	do.	340	-	-	-	356	a/	50	-
46a	Fred Gammenthaler	Spring	Feb.19,1936	214	21	19	37	159	a/	58	132
48	August Ernest	do.	do.	344	13	71	35	366	a/	42	283
49	Louis Feller	89	Mar.13,1936	245	-	-	-	183	a/	60	-
50	August Earnest	283	do.	344	14	48	44	232	82	40	236
51	August Richner	190	do.	354	-	70	28	244	106	28	288
53	Jake Roeder	170	do.	339	-	-	-	220	12	90	-
54	Chas. H. Roeder	87	do.	321	6	59	76	220	10	60	258
55	Chas. Roeder	151	do.	282	-	-	-	128	10	104	-
56	Emil Fritz	190	do.	305	-	-	-	220	8	72	-
57	Herman Juenk	130	do.	327	-	-	-	268	8	60	-
58	Klein Estate	99	Mar.20,1936	451	-	-	-	268	55	84	-
60	W.T. Zenner	100	do.	457	60	45	48	214	39	158	335
61	Morris Land Co.	68	do.	225	-	-	-	208	a/	34	-
62	do.	117	do.	516	-	-	-	378	20	112	-
63	Andrew Brandon	186	do.	497	-	-	-	427	33	62	-
64	August Lott	152	do.	387	7	64	47	244	71	76	278
65	Mrs. Laura Weigand	228	do.	362	13	57	38	220	86	58	267
66	Edwin Pfiester	134	do.	236	-	-	-	232	a/	28	-
67	W.M. Roeder	236	Mar.19,1936	353	21	50	45	317	47	32	256
68	Mrs. W. A. Peril	133	do.	350	36	29	56	159	a/	150	219
69	- Dittmar	137	do.	801	227	85	-	98	a/	440	933
70	Mrs. C.A. Spencer	39	do.	187	-	-	-	183	a/	23	-
71	Mr. C. A. Spencer	62	do.	199	18	34	13	220	a/	24	185
72	Lewis Stevens	75	do.	142	-	-	-	134	a/	20	-

a/ Sulphate less than 10 parts per million.

Partial analyses of water from wells in Gillespie County--Continued

Results are in parts per million.

Well No.	Owner	Depth of well (feet)	Date of collection	Total dissolved solids (calculated)	Calcium (Ca)	Magnesium (Mg)	Sodium and Potassium (Na / K) (calculated)	Bicarbonate (HCO <sub>3</sub> )	Sulphate (SO <sub>4</sub> )	Chloride (Cl)	Total hardness as CaCO <sub>3</sub> (calculated)
73	Lewis Stevens	46	Mar. 19, 1936	175	-	-	-	171	a/	32	-
74	do.	66	do.	143	24	5	26	110	a/	33	81
75a	W.H. Stevens	96	-	198	-	-	-	183	a/	30	-
76	Fred Rahe	190	Mar. 17, 1936	278	6	38	52	232	a/	66	170
100	Adolph Marshall	45	-	304	-	-	-	268	a/	52	-
101	Henry Keyser	38	Feb. 29, 1936	283	-	-	-	171	13	80	-
102	F.W. Lang Estate	56	Feb. 29, 1936	265	8	53	22	256	a/	54	239
103	Willie Mund	162	do.	398	12	73	41	293	a/	126	329
104	Archie Mund	33	do.	310	-	-	-	268	a/	56	-
105	Willie Mund	78	do.	274	-	-	-	244	a/	46	-
106	Otto Hahn	129	do.	535	5	85	76	171	46	238	359
107	Anton Weinheimer	200	Mar. 5, 1936	357	42	29	55	183	8	132	224
108	Joe Stehling Sr.	205	do.	209	-	-	-	195	a/	31	-
109	W.M. Fiedler	212	Feb. 28, 1936	228	18	24	40	220	a/	36	-
110	Alfred J. Dittmar	198	Feb. 29, 1936	414	-	-	-	342	a/	84	-
111	Emil Welgehausen	150	Apr. 16, 1936	269	31	39	22	305	a/	25	237
112	do.	59	do.	355	46	51	21	311	a/	82	324
113	Henry Bruns	43	do.	365	-	-	-	305	a/	72	-
114	Adolph Ochler	134	do.	362	85	22	28	378	a/	38	303
115	-	137	do.	350	-	-	-	390	a/	17	-
116	Beno Kramer	84	Apr. 11, 1936	449	82	46	31	500	10	30	396
117	do.	65	Apr. 12, 1936	350	-	-	-	366	a/	30	-
118	Henry King	156	do.	529	95	68	14	512	16	80	518
119	Mrs. - Jones	49	do.	379	-	-	-	390	a/	36	-
120	Emil Dickie	94	Apr. 16, 1936	370	58	48	21	427	a/	30	346
121	Ruben Durst	140	do.	357	42	29	60	305	a/	74	224
122	Adolph Stehling	155	Feb. 28, 1936	206	11	36	20	195	a/	42	175
123	Margaret Pamblin	80	do.	185	10	27	28	201	a/	20	133
124	Henry Bernhardt	213	Mar. 12, 1936	188	2	26	38	189	a/	28	113
125	Edwin Reeh	114	do.	219	-	-	-	171	a/	50	-
126	Honey Creek School	79	Feb. 19, 1936	336	52	52	4	366	26	19	346
127	Gilbert Loudon	37	do.	365	14	77	21	403	24	28	349
128	Mrs. Fred Baethge	127	do.	311	82	16	15	268	13	51	272
129	Alfred Klaemer	66	-	320	-	-	-	256	10	60	-

a/ Sulphate less than 10 parts per million.

Partial analyses of water from wells in Gillespie County--Continued

Results are in parts per million.

Well No.	Owner	Depth of well (feet)	Date of collection	Total dissolved solids (calculated)	Calcium (Ca)	Magnesium (Mg)	Sodium and Potassium (Na / K) (calculated)	Bicarbonate (HCO <sub>3</sub> )	Sulphate (SO <sub>4</sub> )	Chloride (Cl)	Total hardness as CaCO <sub>3</sub> (calculated)
130	John Schlandt	-	Mar.12,1936	271	-	-	-	220	10	48	-
131	John Phillips	101	Mar.12,1936	285	-	63	36	244	8	56	258
132	Edd. Schändt	121	-	284	-	52	40	290	8	44	213
133	W.E. Smith	54	Feb.28,1936	468	-	-	-	305	a/	138	-
134	William Knopp	63	do.	304	39	53	6	317	a/	48	-
135	do.	66	do.	110	-	-	-	98	a/	12	-
136	Richard Stehling	49	do.	445	-	-	-	281	a/	136	-
137	Henry Arhelger	160	Apr.16,1936	530	-	-	-	500	a/	74	-
138	Arthur Itz	36	Apr.11,1936	432	-	-	-	433	74	35	-
139	Itz Chrome Tannery	49	do.	473	82	44	40	390	20	92	384
140	Palo Alto School	53	do.	539	-	-	-	537	20	43	-
141	Henry Franz	51	Apr.10,1936	400	-	-	-	305	14	82	-
142	Alfred Kordziek	137	Apr. 8,1936	395	62	44	21	445	a/	46	385
143	Alfred Henke	146	Apr.10,1936	396	65	44	31	452	a/	30	345
144	Herman Schmidt	23	do.	625	74	69	71	512	43	112	468
145	Ed Leifeste	59	do.	1,018	-	-	-	597	94	250	-
146	Fritz Langham	196	Apr.12,1936	484	67	59	40	433	12	90	407
147	Mrs. Alfred Lehue	236	Apr.11,1936	496	83	56	33	513	16	52	438
148	Chas. Klaerner	24	do.	691	-	-	-	620	21	94	-
149	Louis Rehn	174	Apr.16,1936	438	-	-	-	488	a/	22	-
150	Gustav Hoff	92	do.	486	-	-	-	500	a/	46	-
151	Jim Evers	108	do.	471	-	-	-	402	a/	88	-
152	Catholic Cemetery	160	Feb.13,1936	365	-	-	-	335	a/	56	-
153	W.M. Hitzfeld	137	do.	1,780	245	60	342	488	149	740	857
154	Walter Henke	101	Feb.14,1936	486	3	58	110	354	a/	138	247
155	Mrs. Albert Seelig	60	do.	993	-	-	-	195	108	435	-
156	August Doell	92	Apr. 2,1936	800	5	121	120	171	83	386	510
157	Emil Schoenewalt	75	Feb.14,1936	686	-	-	-	159	a/	355	-
158	Eugene Schmidt	72	do.	732	-	92	148	171	42	365	377
159	Hugo Wahl	81	May 25,1936	3,334	98	239	836	67	278	1,850	1,229
160	Mrs. Lewis Bruns	119	Feb. 14,1936	2,008	-	153	560	183	224	980	630
161	Louis Koff	418	do.	378	8	65	47	232	a/	142	288
162	Hugo Kallenberg	125	do.	1,240	-	-	-	256	125	545	-
163	Stein Ice Factory	80	Feb.13,1936	660	-	85	133	189	23	325	347

a/ Sulphate less than 10 parts per million.

Partial analyses of water from wells in Gillespie County--Continued

Results are in parts per million.

Well No.	Owner	Depth of well (feet)	Date of collection	Total dissolved solids (calculated)	Calcium (Ca)	Magnesium (Mg)	Sodium and Potassium (Na / K) (calculated)	Bicarbonate (HCO <sub>3</sub> )	Sulphate (SO <sub>4</sub> )	Chloride (Cl)	Total hardness as CaCO <sub>3</sub> (calculated)
164	Stein Ice Factory	211	Feb.13,1936	467	12	72	65	256	16	174	329
165	Mrs. Jacob Kraus	143	Feb.14,1936	470	-	-	-	256	37	132	-
166	Ben Hagel	104	Feb. 8,1936	533	-	-	-	403	a/	128	-
167	Albert Moellendorf	29	Feb. 7,1936	224	-	-	-	208	a/	33	-
168	Ernest Wilke Sr.	48	do.	834	115	105	52	403	21	340	718
169	Turnverein Club	34	Feb.13,1936	663	-	-	-	171	54	285	-
170	Mrs. Cora Habenicht	99	do.	618	89	64	57	421	36	162	488
171	Walter Kolmeier	101	do.	1,343	159	57	267	452	141	493	632
172	Mrs. Henry Schleuter	101	do.	1,413	158	109	216	543	159	500	843
173	R.S. Klett	108	do.	1,643	195	334	334	482	149	655	748
174	Dina Priess Estate	91	do.	1,835	218	11	342	390	179	890	1,014
175	Mrs. Joe Segner	82	do.	1,256	88	52	326	512	74	460	436
176	E.C. Ottens	84	do.	1,154	120	43	251	305	153	435	475
177	Cemetery	59	Feb.12,1936	390	-	-	-	244	a/	120	-
179	Alfred Klaerner	62	Feb.13,1936	904	182	43	100	451	44	310	630
180	Mrs. F.H. Hitzfeld	36	do.	1,081	138	82	154	427	84	410	680
181	Jim Ruff	95	Feb.12,1936	1,104	186	155	-	86	50	670	1,099
182	Henry Ruff	28	Feb.11,1936	632	-	-	-	195	12	290	-
184	Hotel Nimitz	26	Feb.12,1936	767	-	-	-	342	10	300	-
185	Gillespie Co.Well #2	37	Feb.11,1936	1,325	94	155	178	342	127	600	870
186	Gillespie Co.Well #1	107	-	418	6	99	16	342	a/	126	422
187	Blum Estate	86	Feb.25,1936	303	7	43	52	262	12	58	195
188	Henry C. Maier	82	do.	315	-	-	-	281	10	44	-
189	August Borchers	170	do.	331	-	48	65	293	8	64	197
190	Fair Grounds	122	do.	491	-	-	-	413	10	86	-
191	Eddie Stein	146	do.	819	107	51	139	512	42	224	476
192	Earnest Peterman	113	do.	641	12	65	144	171	a/	335	298
193	Gus Siggel	91	do.	717	-	-	-	146	12	370	-
194	Alfred Sauer	103	do.	443	24	58	69	256	10	154	297
195	Edward Peterman	72	do.	250	47	29	7	159	10	78	235
196	Albert Klein	84	Feb. 6,1936	420	37	80	28	354	a/	98	240
197	Eugene Kramer	116	Feb. 7,1936	446	44	58	49	390	16	84	347
198	Lindig Estate	82	Feb. 6,1936	412	112	33	3	198	a/	66	416
199	Mrs. J.G. Kaiser	140	Feb. 4,1936	458	96	52	7	184	25	94	453

a/ Sulphate less than 10 parts per million.

Partial analyses of water from wells in Gillespie County--Continued  
Results are in parts per million.

Well No.	Owner	Depth of well (feet)	Date of collection	Total dissolved solids (calculated)	Calcium (Ca)	Magnesium (Mg)	Sodium and Potassium (Na / K) (calculated)	Bicarbonate (HCO <sub>3</sub> )	Sulphate (SO <sub>4</sub> )	Chloride (Cl)	Total hardness as CaCO <sub>3</sub> (calculated)
200	Mrs. Joe Segner	109	Feb. 4, 1936	452	87	46	27	210	a/	82	407
201	Mrs. Marie Metzger Est. 85	85	Feb. 5, 1936	423	112	35	5	196	a/	75	425
201a	- Gellerman	92	Feb. 6, 1936	435	65	55	27	403	19	68	387
201b	Harry Korzik	95	do.	426	64	52	29	415	15	59	376
201c	Henry Franz	90	do.	279	79	16	8	268	a/	42	262
202	Charley Kiehne	93	Apr. 8, 1936	307	14	41	50	256	a/	74	205
203	B. L. Enderley	97	Apr. 1, 1936	1,592	-	-	-	220	157	760	-
204	Martin Schultz	26	do.	381	37	47	45	305	18	82	286
205	H.W. Breautigam	119	do.	770	-	-	-	220	84	300	-
206	Harry Breautigam	87	do.	749	-	-	-	281	45	290	-
207	Rudolph Habenicht	126	Mar. 18, 1936	1,175	141	47	240	488	113	390	546
208	Max Breautigam	71	Mar. 28, 1936	647	65	66	90	439	59	148	435
209	Emil Breautigam	68	Feb. 27, 1936	1,499	21	65	338	146	12	990	-
210	Earnest Kallenberg	90	Mar. 28, 1936	810	105	35	160	525	74	174	404
211	Otto Stoffers	63	do.	7,052	432	441	1,590	305	387	4,050	2,893
214	D.M. Miller	44	Feb. 13, 1936	898	64	138	50	98	92	505	727
215	Alfred Kunz	106	Mar. 13, 1936	730	-	-	-	213	38	320	-
217	Otto Marshall	49	do.	1,599	46	94	417	85	180	820	501
218	Morris Land Co.	283	Mar. 12, 1936	230	11	34	27	232	a/	38	185
219	do.	144	Mar. 13, 1936	293	-	-	-	268	a/	45	-
220	Alphons Feller	73	Mar. 20, 1936	366	9	52	58	268	47	66	237
221	G.G. Sifford	57	Mar. 27, 1936	459	-	-	-	256	97	70	-
222	Adelbert Weber	84	do.	305	10	44	48	262	16	56	205
223	Mrs. Caroline Weber	91	do.	313	-	-	-	274	10	46	-
224	Mrs. Weber	34	do.	1,183	-	-	-	110	55	655	-
225	Emil Freitag	58	do.	308	-	-	-	268	12	44	-
226	Mrs. Emil Eckert	64	Mar. 31, 1936	544	34	71	74	427	74	78	376
227	Carl Hilker	130	Mar. 27, 1936	277	11	41	42	268	a/	49	198
228	Edmund Grenwelge	110	Mar. 13, 1936	892	12	75	224	195	39	445	340
229	Mrs. Annie Washington	75	Mar. 28, 1936	1,697	28	147	239	415	86	990	1,304
230	Emil Breautigam	39	Apr. 1, 1936	333	-	-	-	220	16	82	-
231	Emil Esensee	31	May 9, 1936	364	-	-	-	147	37	122	-
232	Rufus Kneese	47	Apr. 1, 1936	502	-	-	-	86	23	255	-
233	Emil Hartman	46	do.	545	80	45	66	378	39	126	385

a/ Sulphate less than 10 parts per million.



Partial analyses of water from wells in Gillespie County--Continued  
Results are in parts per million.

Well No.	Owner	Depth of well (feet)	Date of collection	Total dissolved solids (calculated)	Calcium (Ca)	Magnesium (Mg)	Sodium and Potassium (Na / K) (calculated)	Bicarbonate (HCO <sub>3</sub> )	Sulphate (SO <sub>4</sub> )	Chloride (Cl)	Total hardness as CaCO <sub>3</sub> (calculated)
234	Henry Mogford	201	Apr. 1, 1936	640	24	78	108	232	49	265	380
235	R.W. Kneese	82	do.	344	24	37	57	244	20	84	215
236	City of Fredericksburg. Well #2.	45	-	458	51	48	57	268	10	158	328
237	City of Fredericksburg. Well #1.	80	Mar. 27, 1936	850	-	-	-	195	210	250	-
238	Otto Breautigam	122	Feb. 27, 1936	291	-	-	-	201	a/	80	-
239	-	37	Mar. 28, 1936	394	44	47	41	281	35	87	301
240	Hilma Henke	101	Mar. 27, 1936	647	-	-	-	244	153	146	-
241	do.	151	do.	556	4	80	78	207	193	98	340
242	Chester Baum	Spring	do.	332	-	-	-	250	51	34	-
243	Emil Roeder	110	<del>Mar. 27, 1936</del>	527	14	72	71	268	166	70	334
244	August Kott	197	do.	617	47	66	72	220	240	82	388
245	Mrs. Earnest Kott	234	<del>Mar. 27, 1936</del>	335	14	44	52	244	47	56	215
246	Walter Kott	244	Mar. 31, 1936	671	74	66	85	378	215	42	458
247	R.C. Baum	224	do.	494	74	52	36	391	101	36	397
248	Edmund Kott	128	do.	584	58	61	64	317	181	62	398
249	- Weirich	231	do.	708	74	76	68	427	235	42	496
250	William Eckert	78	do.	708	66	86	64	354	211	104	516
251	Richard Hubort	220	do.	718	84	74	81	476	121	120	511
252	Adolph Steiler	221	Mar. 28, 1936	438	44	47	46	305	86	43	301
253	do.	157	do.	546	102	49	37	390	39	124	456
254	Richard Schmidt	240	do.	653	82	74	55	415	129	106	506
255	Josephine Hahn	127	Feb. 25, 1936	582	-	-	-	220	12	245	-
256	Mrs. Richard Hahn	40	do.	483	-	-	-	287	20	140	-
257	H.C. Keese	45	do.	344	-	-	-	293	8	58	-
258	Martin Keller	151	Mar. 27, 1936	292	-	60	31	305	10	39	248
300	Mrs. Mary Knopf	133	Apr. 11, 1936	646	76	78	78	518	47	118	469
301	F.B. Riley	44	do.	731	-	-	-	470	45	178	-
302	Felix Kuhlman	45	do.	514	-	-	-	415	23	88	-
303	do.	29	do.	688	94	124	14	536	a/	188	675
304	Frank Harvey	73	do.	342	49	39	33	390	a/	26	285
305	Arthur Peterson	79	do.	1,215	-	-	-	378	129	460	-
306	-	160	do.	262	-	-	-	256	a/	31	-

a/ Sulphate less than 10 parts per million.

Partial analyses of water from wells in Gillespie County--Continued

Results are in parts per million.

Well No.	Owner	Depth of well (feet)	Date of collection	Total dissolved solids (calculated)	Calcium (Ca)	Magnesium (Mg)	Sodium and Potassium (Na / K) (calculated)	Bicarbonate (HCO <sub>3</sub> )	Sulphate (SO <sub>4</sub> )	Chloride (Cl)	Total hardness as CaCO <sub>3</sub> (calculated)
307	Dabney Estate	74	Apr.10,1936	662	149	120	-	366	12	198	865
308	Albert Kolmeir	76	do.	230	68	10	8	229	a/	28	211
309	William Kolmeir	169	do.	1,153	172	17	250	438	30	465	501
310	Dave Mochle	89	do.	939	-	-	-	122	62	480	-
311	I.W. Lee	52	do.	744	40	10	240	488	90	120	141
312	do.	119	do.	790	-	-	-	354	136	194	-
313	Ben F. Thomas	81	do.	942	161	15	181	281	a/	445	462
314	T.H. Lawrence	32	do.	587	95	24	92	207	43	230	338
315	J.W. Thomas	134	do.	466	-	-	-	342	12	106	-
316	do.	32	do.	3,691	334	209	760	698	250	1,790	1,696
317	- Hohman	64	do.	330	-	-	-	305	12	39	-
318	H.J. Robinson	55	Feb.21,1936	265	-	-	-	214	a/	54	-
319	do.	56	Feb.20,1936	213	8	29	23	195	a/	56	189
320	J.H. Burrier	36	do.	273	-	-	-	195	a/	72	-
321	C.E. Willowford	44	do.	241	-	43	35	226	a/	50	178
322	Henry Horlen	46	do.	208	5	38	20	122	10	74	171
324	Mrs. Henry Horlen	160	Apr.23,1936	442	85	34	43	464	a/	48	353
325	- Suedeymer	123	Apr. 9,1936	1,302	-	-	-	220	51	670	-
326	Albert Immel	176	do.	390	-	48	88	293	a/	108	202
328	Rudolph Pressler	92	do.	667	-	-	-	488	a/	168	-
329	Louis Eckhardt	191	do.	410	4	70	46	281	a/	150	341
330	Edgar Ottmers	249	do.	655	-	-	-	263	33	250	-
331	R.W. Danz	464	do.	517	8	80	79	305	18	180	350
332	Llano Bank	224	do.	658	-	-	-	281	133	152	-
333	Charles Mohr	270	do.	506	-	97	54	366	70	102	400
334	Marvin Mohr	181	do.	544	74	68	44	536	16	74	465
336	Alfred Ottmers	75	do.	446	28	70	46	390	39	68	359
337	Unknown	83	do.	308	-	-	-	244	a/	68	-
338	Max Kunz	121	Apr.10,1936	398	62	52	51	414	a/	26	366
339	State Highway Dept.	Spring	Feb.20,1936	219	-	-	-	207	a/	30	-
340	Otto Grobe	50	do.	703	112	120	-	500	43	178	775
341	Albert Segner	50	do.	1,864	5	122	480	403	186	770	515
342	Ed. Fries	78	do.	752	118	61	80	427	58	222	548
343	Chas. Beyer	149	Apr. 8,1936	2,576	328	95	495	512	302	1,100	1,210

a/ Sulphate less than 10 parts per million.

Partial analyses of water from wells in Gillespie County--Continued

Results are in parts per million.

Well No.	Owner	Depth of well (feet)	Date of collection	Total dissolved solids (calculated)	Calcium (Ca)	Magnesium (Mg)	Sodium and Potassium (Na / K) (calculated)	Bicarbonate (HCO <sub>3</sub> )	Sulphate (SO <sub>3</sub> )	Chloride (Cl)	Total hardness as CaCO <sub>3</sub> (calculated)
344	Edwin Oehler	43	Apr. 8, 1936	230	37	22	18	140	15	68	183
346	Rhinehold Oehler	57	do.	427	-	-	-	415	a/	54	-
347	Chas. H. Wagner	54	Apr. 17, 1936	768	44	92	117	475	110	168	487
348	do.	199	<del>Apr. 17, 1936</del>	728	-	-	-	507	63	140	-
349	do.	17	do.	419	36	91	-	464	27	33	463
350	William Ebert	32	Mar. 9, 1936	509	86	129	-	220	59	120	746
351	Mrs. Jinnie Wienecke	207	Apr. 9, 1936	387	-	-	-	354	a/	60	-
352	Lutheran Church	322	do.	361	-	-	-	323	20	46	-
353	Felix Ottmer	167	Apr. 11, 1936	629	92	65	52	500	42	128	498
354	William Schleuter	77	Apr. 17, 1936	593	108	97	-	560	a/	108	667
355	do.	72	do.	645	-	-	-	452	50	128	-
357	Alfred Woegel	77	do.	684	-	-	-	580	23	108	-
358	Harry Hopf	256	Apr. 1, 1936	391	47	89	-	403	a/	54	485
359	Harry Duesher	262	Apr. 17, 1936	527	67	68	43	488	25	80	445
360	Vance Tyson	60	do.	360	-	-	-	342	a/	49	-
361	Willie Pehl	130	do.	1,193	96	73	267	658	53	375	541
362	Adam F. Pehl	119	do.	756	84	71	114	524	a/	225	499
363	Paul Pehl	66	<del>Apr. 17, 1936</del>	594	93	56	64	543	a/	110	462
364	Ludwig Vorauer	48	Apr. 8, 1936	1,363	213	102	147	525	84	555	953
365	Henry Mogford	82	Apr. 1, 1936	387	-	-	-	232	39	88	-
366	Edmund Kraus	84	do.	1,271	92	90	259	305	108	570	601
367	-	184	do.	523	38	67	61	330	108	84	368
368	Bennie Baag	133	do.	398	11	54	68	317	43	64	247
369	do.	52	do.	645	108	66	42	476	67	124	543
370	Arthur Esensee	103	do.	1,831	-	-	-	195	20	1,050	-
371	Rocky Hill School	69	Apr. 7, 1936	1,074	-	-	-	549	112	295	-
372	Frank Baag	158	do.	528	14	69	85	281	104	116	318
373	Albert Moellering	62	do.	1,079	-	-	-	232	74	500	-
374	Christian Machisen	98	<del>Apr. 17, 1936</del>	881	102	32	184	244	96	345	384
375	Hilmer Weinheimer	86	<del>Apr. 17, 1936</del>	478	-	-	-	305	30	116	-
376	Joseph Jenschke	89	do.	502	14	46	122	244	12	186	208
377	Joseph Schmidtzensky	135	do.	403	-	-	-	256	31	94	-
378	Hohenberger Bros.	325	do.	366	82	51	-	244	31	80	416
379	Lower Grape Creek School	47	do.	595	88	5	140	305	a/	210	241

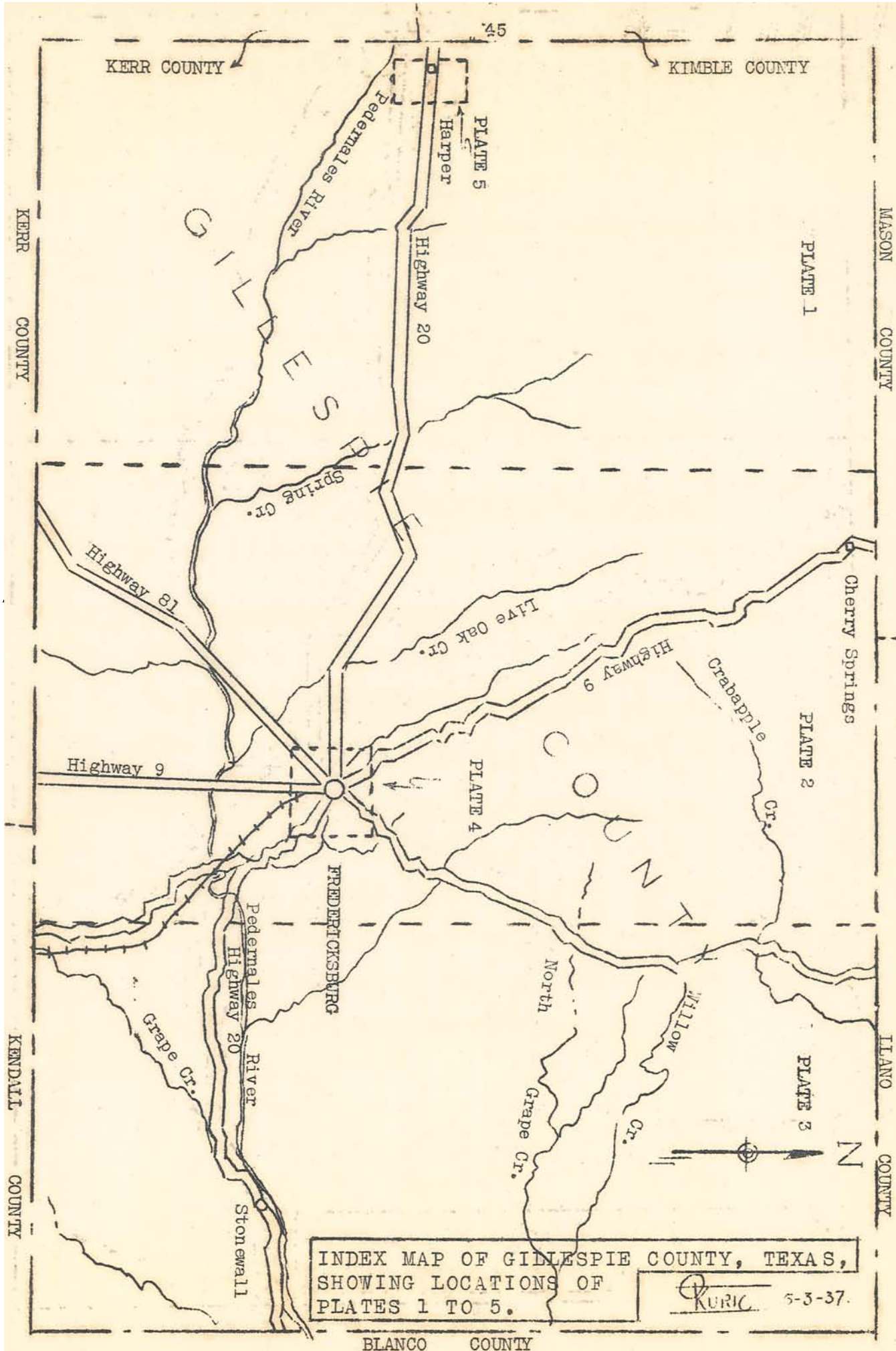
a/ Sulphate less than 10 parts per million.

Partial analyses of water from wells in Gillespie County--Continued

Results are in parts per million.

Well No.	Owner	Depth of well (feet)	Date of collection	Total dissolved solids (calculated)	Calcium (Ca)	Magnesium (Mg)	Sodium and Potassium (Na + K) (calculated)	Bicarbonate (HCO <sub>3</sub> )	Sulphate (SO <sub>3</sub> )	Chloride (Cl)	Total hardness as CaCO <sub>3</sub> (calculated)
380	Oswald Behrends	99	Apr. 7, 1936	796	-	-	-	463	21	245	-
381	do.	93	do.	1,130	-	-	-	305	168	410	-
382	Max Schuman	38	Apr. 7, 1936	2,203	-	-	-	134	274	1,090	-
383	William Herber	74	do.	2,343	205	134	464	201	340	1,100	1,062
384	Mrs. H.J. Burg	53	do.	2,518	101	255	473	457	281	1,180	1,302
385	do.	77	do.	1,002	-	-	-	440	86	330	-
386	Richard Danz	48	do.	1,262	-	-	-	464	223	360	-
387	Lutheran Church	36	do.	413	39	54	38	171	51	146	317
388	Emil Neffendorf	55	do.	336	-	-	-	250	25	60	-
389	D.C. Hodges	35	do.	615	-	-	-	268	68	190	-
391	Andrew Lindig	900	Mar. 18, 1936	1,495	304	40	103	61	914	104	925
392	do.	1,200	do.	2,062	225	2	354	31	668	104	570
393	Alfred Novian	63	Mar. 18, 1936	2,900	257	370	202	73	1,945	90	1,753
395	Albert Wilke	230	do.	895	27	104	123	256	455	58	498
397	Engel Estate	41	Apr. 1, 1936	1,176	123	86	323	464	266	146	661
398	do.	30	do.	552	-	-	-	342	84	96	-
399	Miss Meth Kreiger	82	do.	414	58	48	25	269	79	70	346
400	Christian Behrens	71	do.	372	-	-	-	269	25	76	-
401	Oswald Behrends	143	do.	349	74	34	15	329	a/	62	324
402	do.	121	do.	333	-	-	-	281	17	49	-
403	Meyer Ranch	132	do.	359	-	-	-	305	12	45	-
404	Walter Behrends	142	do.	666	-	114	59	195	328	68	470
405	J.W. Adams	240	-	585	46	61	79	330	168	66	368
407	A.A. Feidler	286	Feb. 20, 1936	837	126	78	63	464	252	86	637
408	August Young	302	do.	488	12	64	77	281	129	66	293
409	Henry Klinkenk	3,024	Feb. 27, 1936	836	45	85	145	207	380	78	359

a/ Sulphate less than 10 parts per million.



INDEX MAP OF GILLESPIE COUNTY, TEXAS,  
 SHOWING LOCATIONS OF  
 PLATES 1 TO 5.

KURIC 5-3-37.

EXPLANATION OF PLATES

Index map of Gillespie County, Texas, showing locations of plates 1, 2, 3, 4 and 5.

Plate 1, Showing location of wells in the western part of Gillespie County, Texas.

Plate 2, Showing location of wells in the central part of Gillespie County, Texas.

Plate 3, Showing location of wells in the eastern part of Gillespie County, Texas.

Plate 4, Showing location of wells in the City of Fredericksburg, Gillespie County, Texas.

Plate 5, Showing location of wells in the City of Harper, Gillespie County, Texas.

Base maps compiled from county highway map and field notes.

Field work by Elgean Shields.

Works Progress Administration Project 2088.

Texas Board of Water Engineers assisted by the U. S. Geological Survey.

-----  
SYMBOLS USED

○ Well with hand pump.

⊖ Well with windmill or small power pump.

⊙ Well with pumping plant--5 horsepower or larger.

⊖ Well drilled to test for oil or gas.

⊘ Unused well.

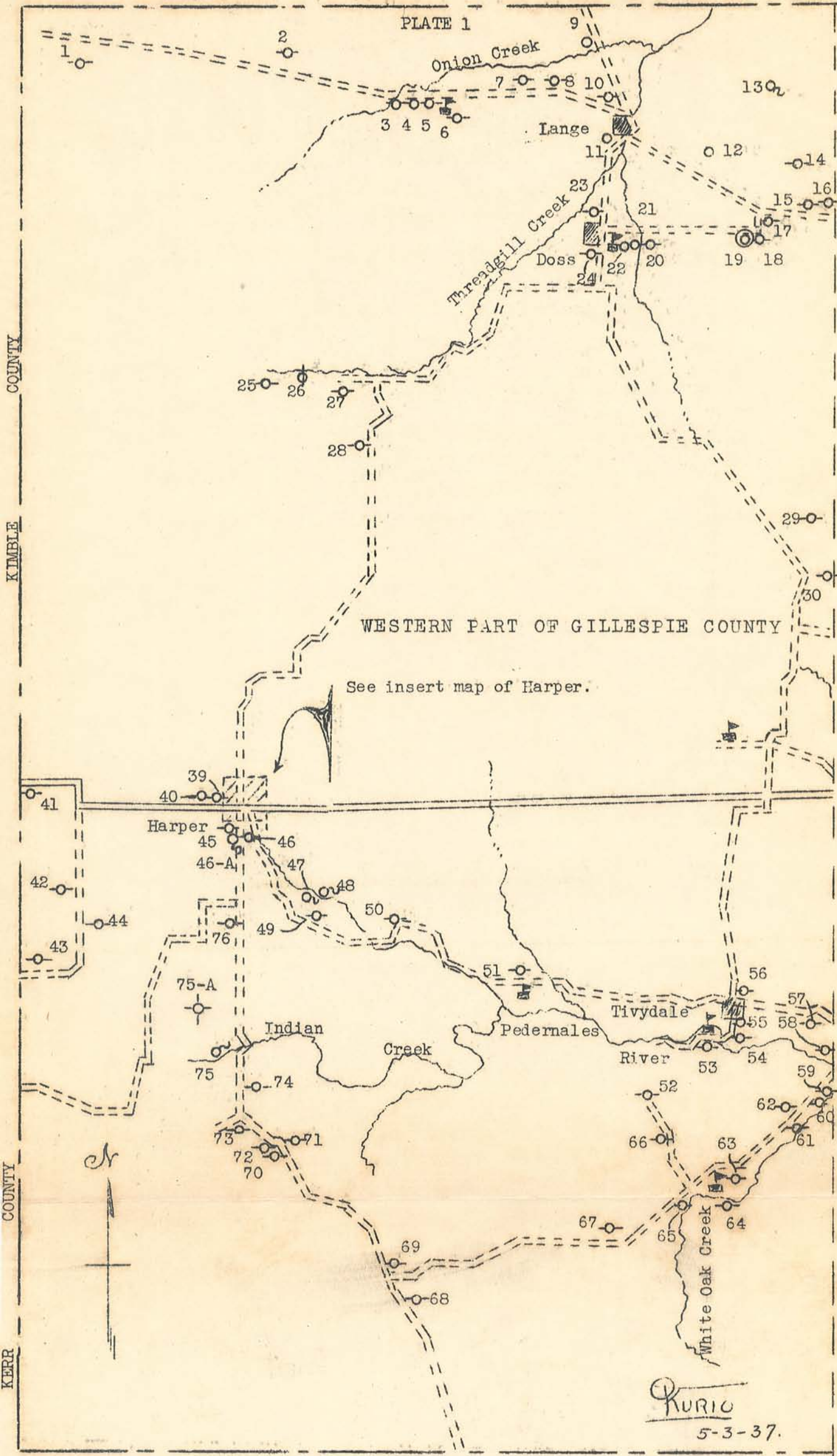
⊙ Spring.



MASON

COUNTY

PLATE 1



WESTERN PART OF GILLESPIE COUNTY

See insert map of Harper.

cr

RURIO

5-3-37.

Scale



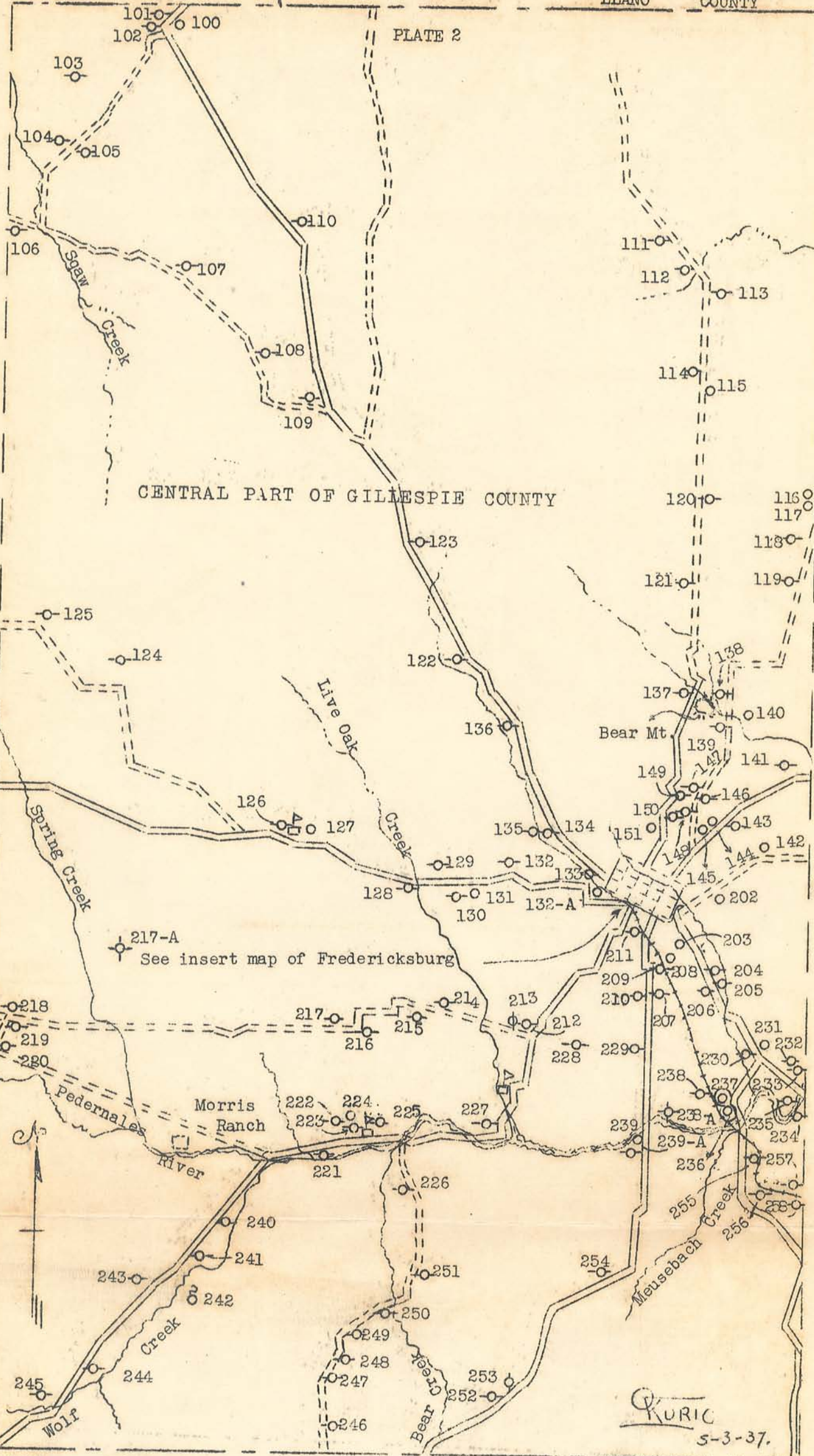


MASON COUNTY

LLANO COUNTY

PLATE 2

CENTRAL PART OF GILLESPIE COUNTY

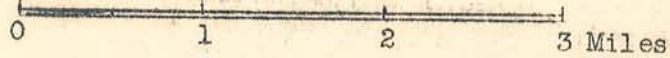


217-A  
See insert map of Fredericksburg

KURIC  
5-3-37.

KERR COUNTY

Scale

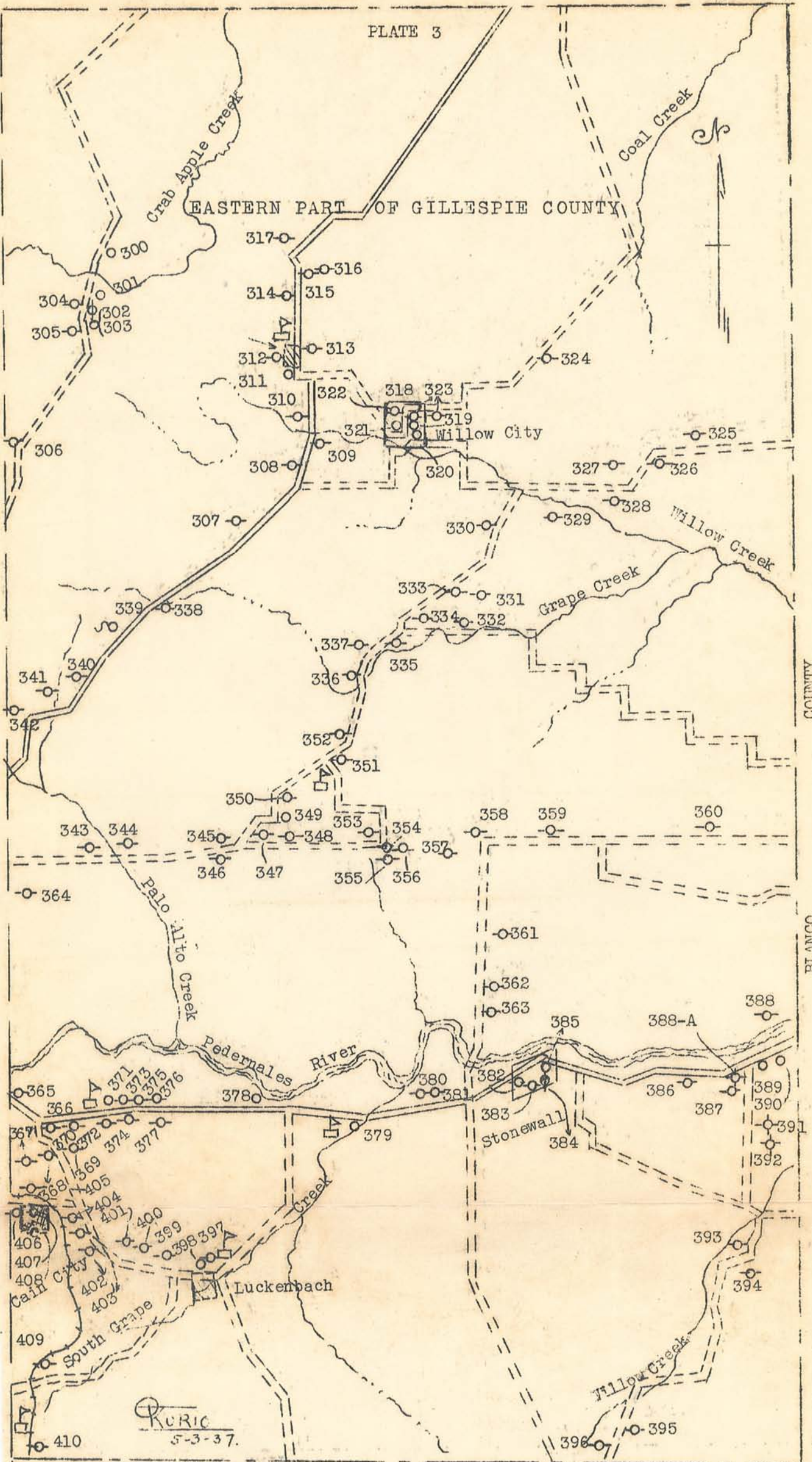




LLANO COUNTY

PLATE 3

EASTERN PART OF GILLESPIE COUNTY



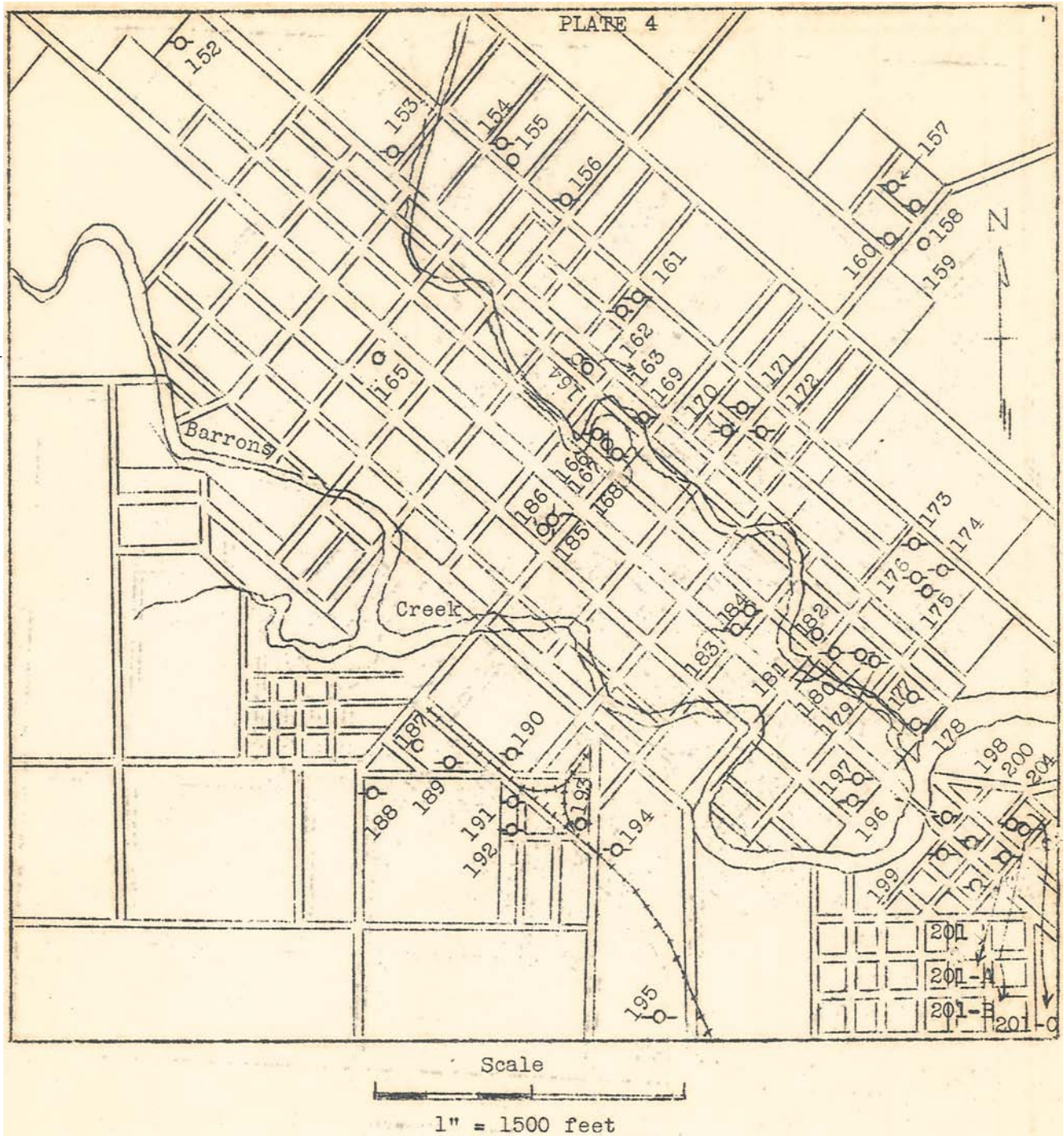
KENDALL

Scale

COUNTY

0 1 2 3 Miles

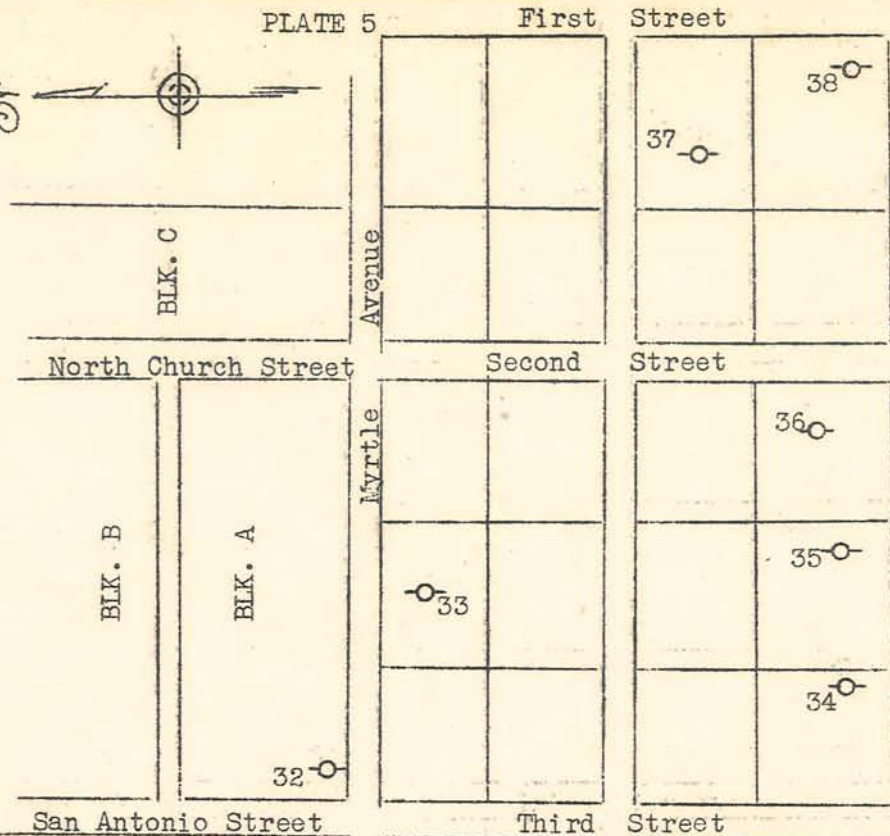




MAP OF CITY OF FREDERICKSBURG

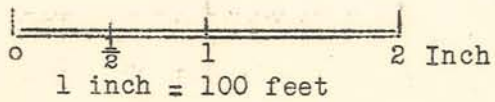
KURIC  
5-1-37.

PLATE 5



CITY OF HARPER

Scale



Q RUIO 5-3-37.

Sixth Street